

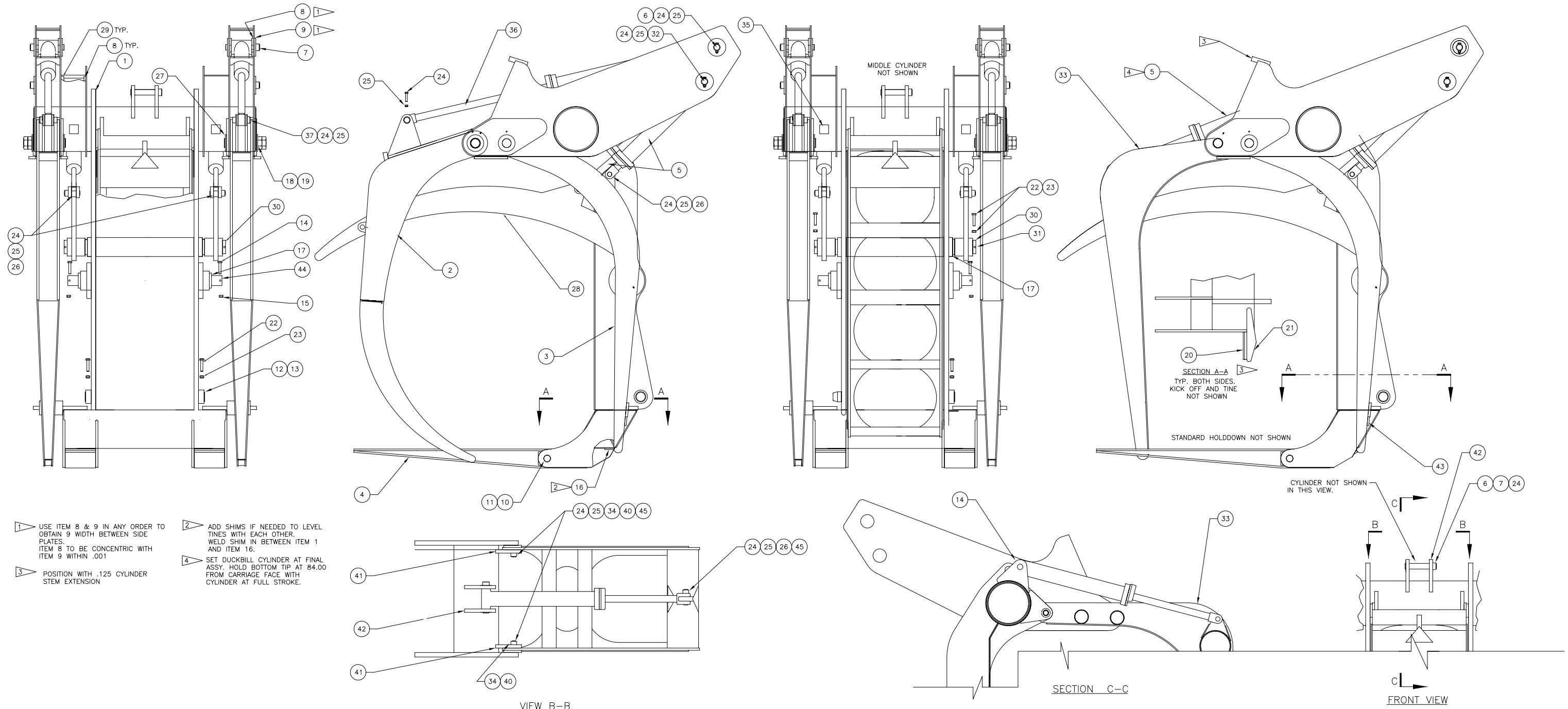
---

Carriage Assembly

## Carriage Assembly

Item	Part No.	Qty	Description	Item	Part No.	Qty	Description
<b>579444 Carriage Assembly</b>							
1	579445	1	. Carriage	24	231625	7	. Capscrew
2	579450	2	. Holddown Assembly	25	224202	7	. Esna Nut
3	579475	2	. Kickoff Assembly	26	541616	5	. Pin
4	526133	2	. Tine	27	562555	4	. Spacer Plate
5	* 526164	5	. Cylinder Assembly	28	579446	1	. Holddown Assembly, Aux LH
6	500418	3	. Pin	29	577544	2	. Boss
7	508552	5	. Lock Collar	30	527760	2	. Lock Collar
8	573718	10	. Boss	31	577514	1	. Pin
9	573813	8	. Boss	32	577515	2	. Pin
10	526294	2	. Pin Assembly	33	577546	1	. Holddown, Aux
11	220275	2	. Cotter Pin	34	515546	2	. Lock Collar
12	577543	1	. Pin	35	577717	2	. Plate, Stop
13	523108	1	. Lock Collar	36	* 574867	2	. Cylinder Assembly
14	09429820	2	. Capscrew	37	505841	2	. Pin
15	220918	2	. Esna Nut	38	579464	1	. Holddown Assembly, Aux RH
16	519440	2	. Plate	40	574032	2	. Pin
17	519324	4	. Bushing	41	573808	2	. Plate, Pivot
18	573783	4	. Pin Assembly	42	573806	2	. Plate, Pivot
19	219928	8	. Jam Nut	43	563503	2	. Plate, Stop
20	579617	2	. Plate, Stop	44	537642	1	. Pin
21	573728	2	. Plate, Stop	45	501571	1	. Bushing
22	219886	5	. Capscrew				
23	230897	5	. Esna Nut				

\* See Separate Coverage



- 1 USE ITEM 8 & 9 IN ANY ORDER TO OBTAIN 9 WIDTH BETWEEN SIDE PLATES. ITEM 8 TO BE CONCENTRIC WITH ITEM 9 WITHIN .001
- 2 ADD SHIMS IF NEEDED TO LEVEL TINES WITH EACH OTHER. WELD SHIM IN BETWEEN ITEM 1 AND ITEM 16.
- 3 POSITION WITH .125 CYLINDER STEM EXTENSION
- 4 SET DUCKBILL CYLINDER AT FINAL ASSY. HOLD BOTTOM TIP AT 84.00 FROM CARRIAGE FACE WITH CYLINDER AT FULL STROKE.

VIEW B-B

SECTION C-C

FRONT VIEW