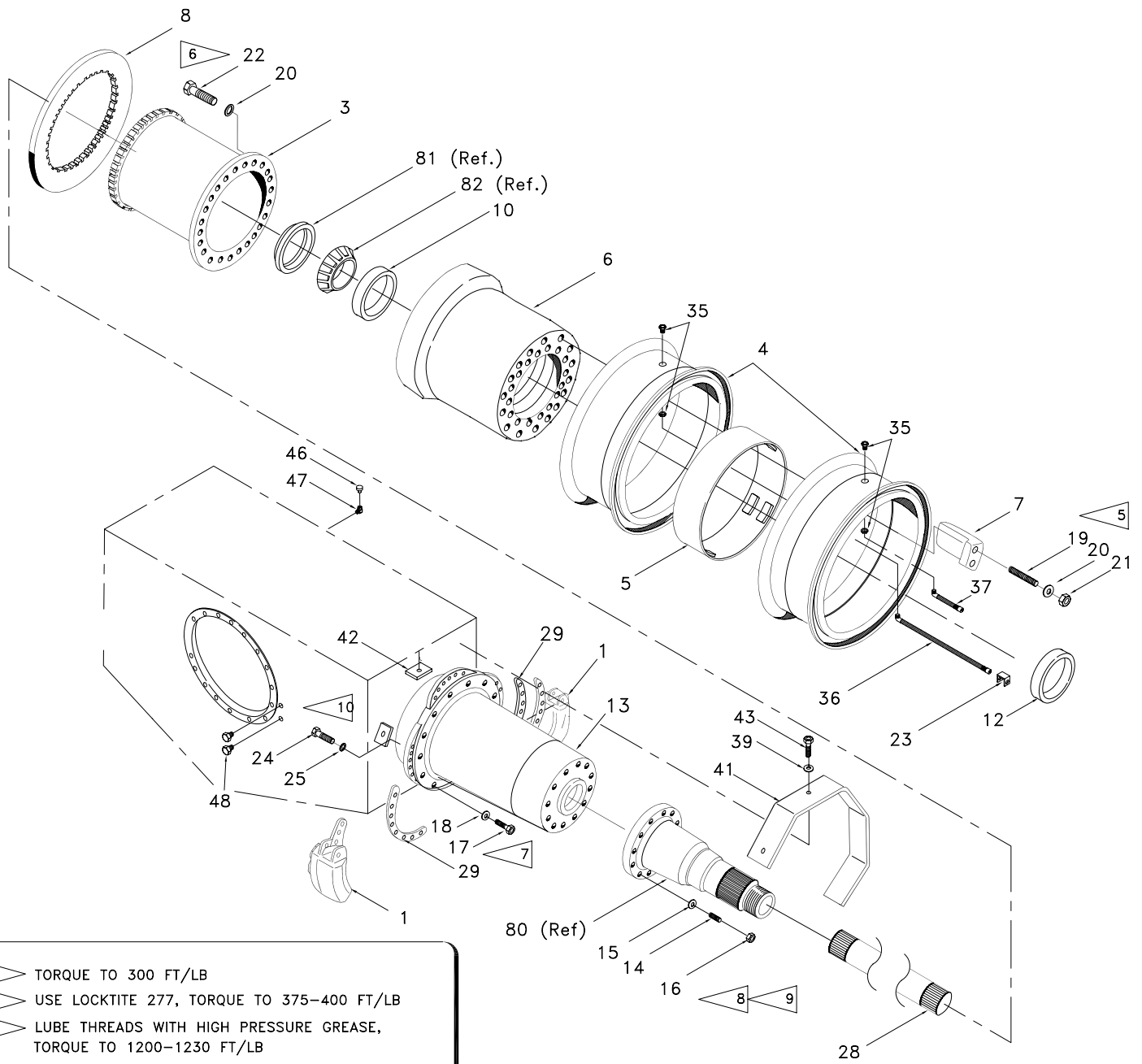

Drive Axle



- | | |
|----|---|
| 5 | TORQUE TO 300 FT/LB |
| 6 | USE LOCKTITE 277, TORQUE TO 375-400 FT/LB |
| 7 | LUBE THREADS WITH HIGH PRESSURE GREASE, TORQUE TO 1200-1230 FT/LB |
| 8 | USE LOCKTITE 277, TORQUE STUD TO 200-230 FT/LB |
| 9 | TORQUE NUT TO 682-750 FT/LB |
| 10 | USE LOCKTITE 272, TORQUE TO 475-500 FT/LB |

Drive Axle

| Item | Part No. | Qty | Description | Item | Part No. | Qty | Description |
|------|---------------|-----|----------------------|------|----------|-----|------------------------------------|
| | 579181 | | Drive Axle | 24 | 00271656 | 32 | . Capscrew |
| 1 | * 570733 | 4 | . Brake Caliper | 25 | 00103347 | 32 | . Washer, Flat |
| 3 | 563899 | 2 | . Disc Brake Driver | 28 | 547338 | 2 | . Axle Shaft |
| 4 | * 229546 | 4 | . Rim Assembly, Comp | 29 | 545267 | 4 | . Shim |
| 5 | 566386 | 2 | . Wheel Spacer | 35 | 219142 | 4 | . Spud |
| 6 | 566338 | 2 | . Hub | 36 | 233938 | 2 | . Stem, Valve |
| 7 | 563937 | 18 | . Clamp, Dual Wheel | 37 | 219144 | 2 | . Stem, Valve |
| 8 | 563921 | 2 | . Plate | 39 | 224202 | 6 | . Nut, Esna |
| 10 | REF | 2 | . Bearing Cup | 41 | 564223 | 2 | . Plate, Guard |
| 12 | REF | 2 | . Bearing Cup | 42 | 563511 | 6 | . Bracket |
| 13 | 569905 | 2 | . Axle Housing | 43 | 201635 | 6 | . Capscrew |
| 14 | 219246 | 24 | . Stud | 45 | 236308 | 1 | . Silicone |
| 15 | 208830 | 24 | . Washer | 46 | 200268 | 1 | . Cap, Breather |
| 16 | 223433 | 24 | . Nut, Esna | 47 | 227807 | 1 | . Fitting, El |
| 17 | 00223911 | 32 | . Capscrew | 48 | 209916 | 2 | . Fitting, Mc |
| 18 | 225851 | 32 | . Washer, Hard | 60 | * 242641 | 1 | . Wheel End & Differential Carrier |
| 19 | 225466 | 36 | . Stud | 80 | REF | 2 | . Spindle |
| 20 | 225176 | 84 | . Washer, Hard | 81 | REF | 2 | . Oil Seal |
| 21 | 225468 | 36 | . Nut | 82 | REF | 2 | . Bearing Cone |
| 22 | 00186729 | 48 | . Capscrew | 83 | REF | 2 | . Bearing Cone |
| 23 | 570913 | 2 | . Tab | | | | |

* See Separate Coverage