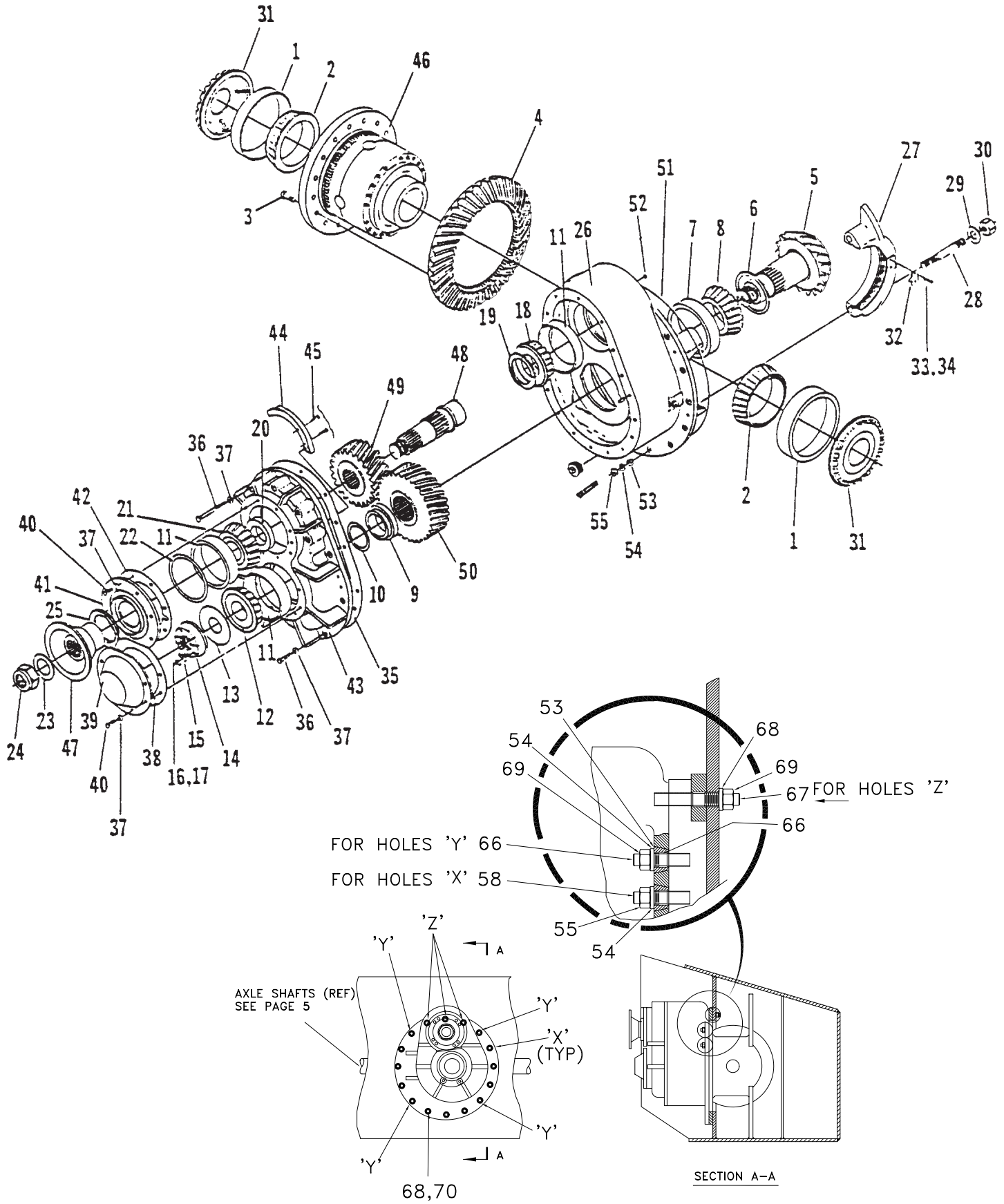


Drive Axle, Front

---

# Differential / Carrier Assembly

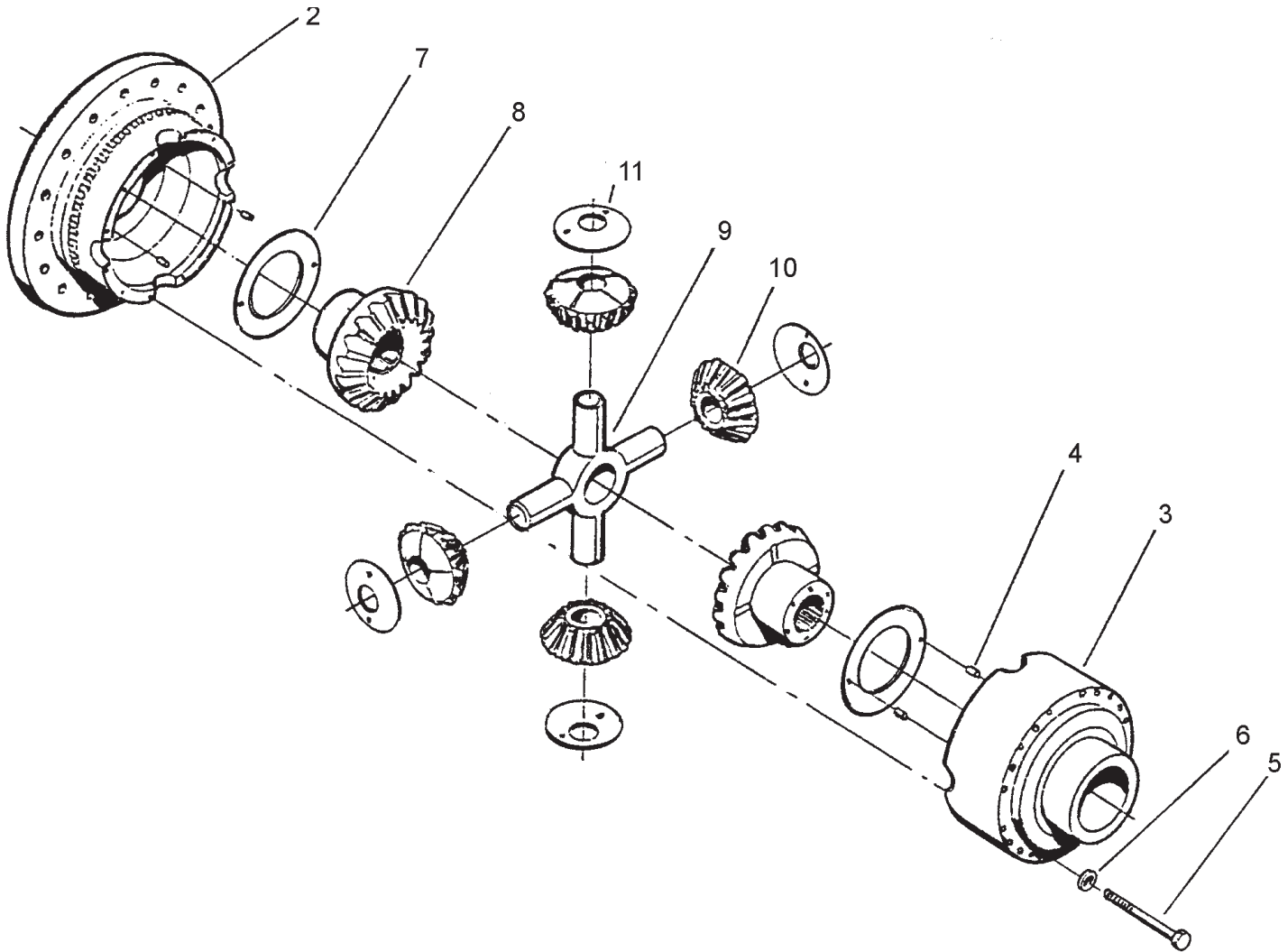


Item	Part No.	Qty	Description	Item	Part No.	Qty	Description
	<b>225033</b>	<b>1</b>	<b>Differential / Carrier Assembly</b>				
1	*b 225380	2	. Cup, Bearing	36	239147	6	.. Capscrew
2	*b 225381	2	. Cone, Bearing	37	00103325	30	.. Lockwasher
3	237061	16	. Capscrew	38	*c 225397	1	.. Gasket, Pinion
	*b 225383	1	. Spiral Bevel Gear Set	39	225398	1	.. Cover, Pinion
4	-----	NSS	.. Ring Gear	40	239148	24	.. Capscrew
5	-----	NSS	.. Pinion Gear	41	225406	1	.. Cover, Input
6	*b 225384	1	.. Pinion Adjustment Spacer	42	*c 225405	1	.. Gasket, Input
7	*b 225385	1	. Cup, Bearing	43	-----	NSS	.. Housing Cover
8	*b 225386	1	. Cone, Bearing	44	239149	1	.. Oil Collector
9	*c 225389	1	. Spacer	45	225377	2	.. Capscrew
10	*c 225390	1	. Shim Set	46	225382	1	. Differential Subassembly (See Page 4)
11	*c 225391	3	. Cup, Bearing	47	225408	1	. Flange, Input
12	*c 225392	1	. Cone, Bearing	47A	*a 247617	1	. Spacer
13	*c 225393	1	. Washer, Pinion	48	*c 225399	1	. Shaft, Input-Short 10T
	-----	1	. Nut Assembly, Pinion	49	*c 225387	1	. Gear, Drive
14	225394	1	.. Nut, Pinion	50	*c 225388	1	. Gear, Driven
15	225395	1	.. Nut, Lock	51	*b 239150	1	O-Ring
16	234871	1	.. Capscrew	52	*b 225411	3	O-Ring
17	225396	1	.. Lock, Bolt	53	225412	4	Cone, Dowel
18	*c 225400	1	. Cone, Bearing	54	225467	13	Washer
19	*c 225401	1	. Spacer	55	00220081	13	Nut
20	*c 225402	1	. Spacer	66	225182	4	Stud
21	*c 225403	1	. Cone, Bearing	67	225183	3	Stud
22	*c 225404	1	. Shim Set	68	225176	12	Washer
23	225409	1	. Washer, Input	69	223188	7	Nut
24	225410	1	. Nut, Input	70	223451	9	Washer
25	*c 225407	2	. Seal				
	225372	1	. Carrier Housing Assembly				
26	-----	NSS	.. Housing	56	-----	1	. Data Plate
27	-----	NSS	.. Bearing Cap	57	-----	4	. Drive Screw
28	225373	4	.. Stud	58	239151	13	. Stud
29	225374	4	.. Washer	59	234712	1	. Plug
30	225375	4	.. Nut	60	00444695	2	. Plug
31	225378	2	.. Nut, Differential Adjusting	61	221747	2	. Plug
32	225379	2	.. Lock, Adjusting Nut	62	238022	4	. Plug
33	222467	4	.. Washer	63	221758	2	. Plug
34	239146	4	.. Capscrew	64	239152	2	. Capscrew
35	*c 225376	1	.. Gasket		NSS		Not Sold Separately

**The Following Items Are Not Illustrated**

- \*a Fits behind yoke (not illustrated)
- \*b Included in Differential Kit: 588589
- \*c Included in Differential - Input Kit: 588686

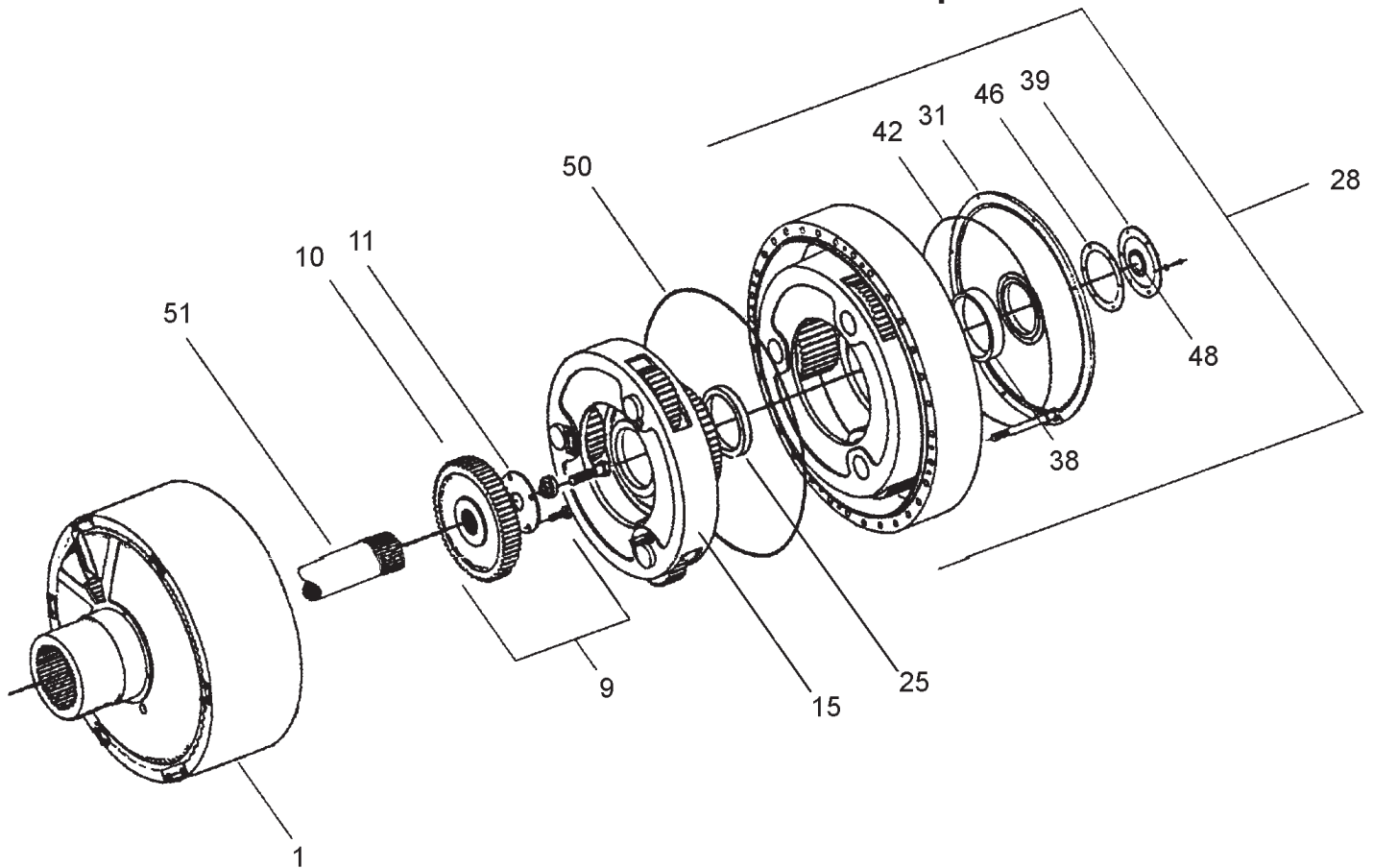
# Differential Subassembly



Item	Part No.	Qty	Description	Item	Part No.	Qty	Description
	<b>225382</b>		<b>Axle Housing Group</b>				
1	225413	1	. Case Assembly	8	*a 225417	8	. Side Gear
2	NSS	1	.. Case Half, Flange	9	*a 225418	1	. Spider, Differential
3	NSS	1	.. Case Half, Plain	9A	NSS	4	.. Bushing
4	225414	4	.. Dowel	10	*a 225419	1	. Pinion Gear (Set of 4)
5	225415	20	.. Bolt	11	*a 225421	4	. Thrust Washer
6	230960	20	.. Washer, Hardened		NSS		Not Sold Separately
7	*a 225416	2	. Thrust Washer				

\*a Included in Differential Kit: 588589

## Internal Gear and Planet Group



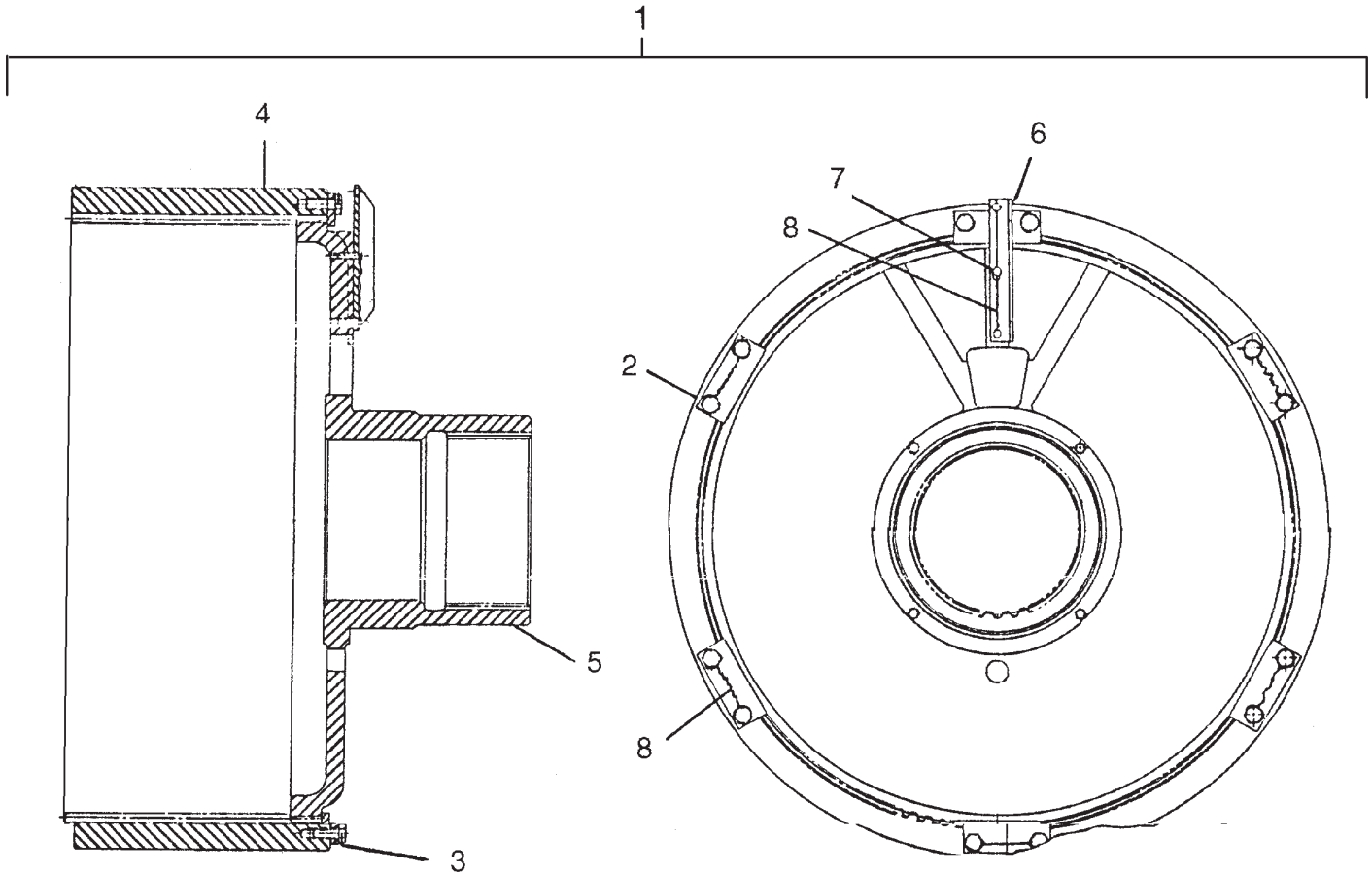
Note: See Pages 6 & 7 For Section View

Item	Part No.	Qty	Description	Item	Part No.	Qty	Description
<b>Internal Gear and Planet Group</b>							
1	225034	1	.. Internal Gear Assembly (See Page 6)	28	225036	1	.. Planet Asm, 2nd Stage (See Page 7)
2	225425	12	.. Capscrew	29	225441	1	.. Carrier, Planet
3	225424	6	.. Lock Plate, Internal Gear	30	*a 225442	3	.. Gear, Planet
4	225423	1	.. Ring Gear	31	225448	1	.. Cover, Planet Carrier
5	225422	1	.. Hub, Ring Gear Mounting	32	*a 225446	3	.. Pin, Planet
6	239153	1	.. Deflector, Oil	33	225437	3	.. Lock Plate, Planet Pin
7	238028	2	.. Capscrew	34	225430	6	.. Capscrew
8	239154	1	.. Lockwire	35	*a*b 239215	6	.. Bearing
9	225426	1	.. Sun Gear Assembly (See Page 6)	36	*a 225443	6	.. Retainer Ring
10	225427	1	.. Gear, Sun	37	239155	1	.. Lockwire
11	225428	1	.. Retainer	38	239156	1	.. Spacer
12	00271656	1	.. Capscrew	39	225451	1	.. Cover Plate, Sun Gear
12A	245269	1	.. Spacer	40	00129845	8	.. Capscrew
13	225430	4	.. Capscrew	41	201567	14	.. Lockwasher
14	239155	1	.. Lockwire	42	*a 225450	1	.. O-Ring
15	225035	1	.. Planet Asm, First Stage (See Pg 7)	43	225454	2	.. Data Plate, "FILL"
16	225431	1	.. Housing, Planet	44	225455	2	.. Data Plate, "OIL LEVEL"
17	*a 225432	3	.. Gear, Planet Idler	45	00114672	6	.. Capscrew
18	*a 225433	6	.. Bearing, Roller	46	*a 225452	1	.. Gasket
19	*a 225434	3	.. Snap Ring	47	238022	2	.. Plug
20	*a 225436	3	.. Pin, Planet	48	225453	1	.. Magnet
21	225425	12	.. Capscrew	49	*a*b 225435	6	.. Spacer, Bearing
22	239154	1	.. Lockwire	50	*a 225440	1	.. O-Ring
23	225437	3	.. Lock Plate, Planet Pin	51	225037	1	Axle Shaft
24	*a 225438	1	.. Gear, Sun	<b>The Following Items Are Not Illustrated</b>			
25	225439	2	.. Bearing, Thrust	52	238020	32	.. Capscrew, Planet to Adapter
26	225424	3	.. Lock Plate, Sun Gear	53	225467	32	.. Washer, Planet to Adapter
27	*a 225435	6	.. Spacer, Gear				

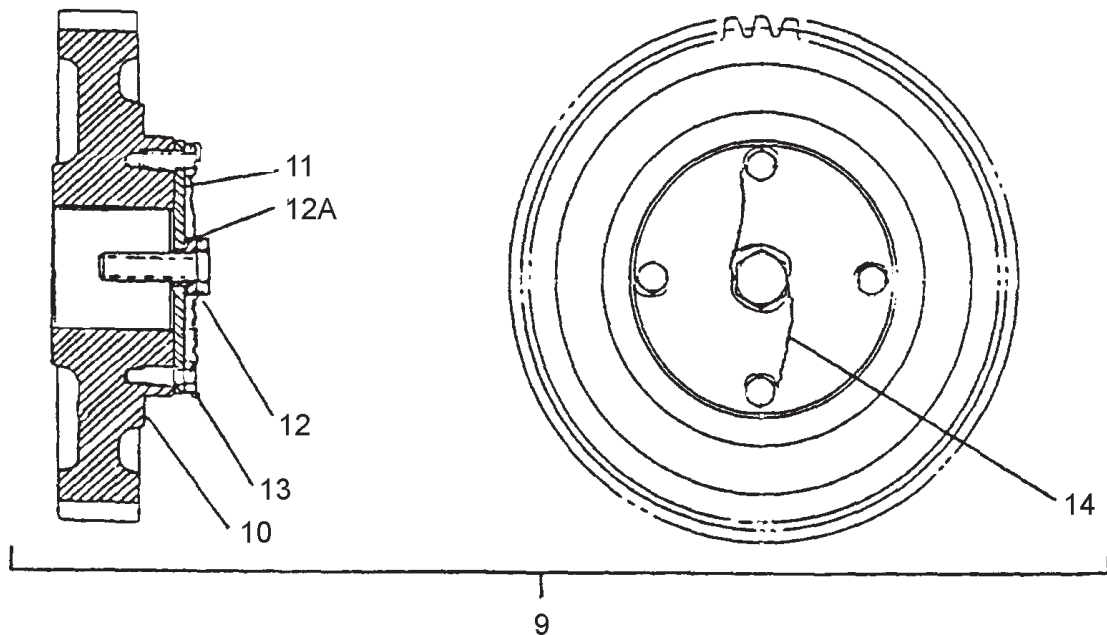
\*a Included In 588571 1st & 2nd Planetary Kit

\*b Included In 575226 Bearing & Spacer Kit

## Internal Gear Assembly

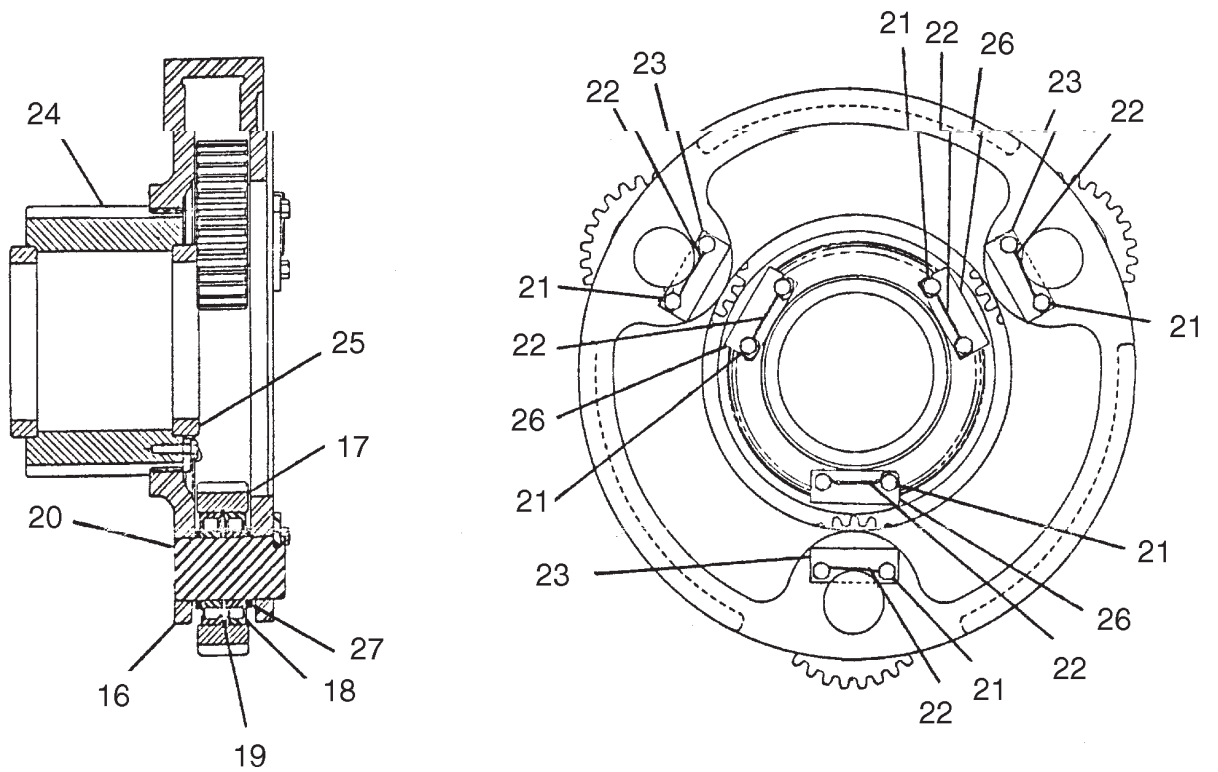


## Sun Gear Assembly



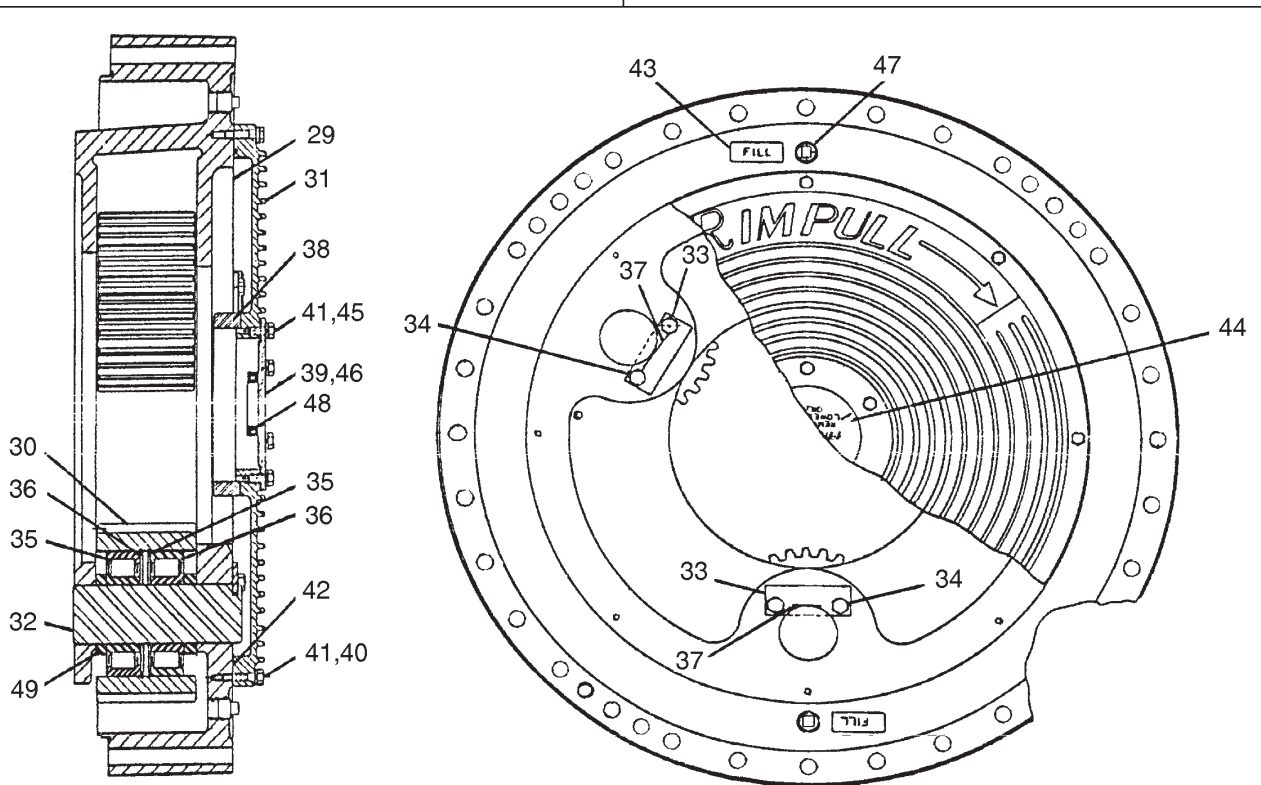
# Planet Assembly, First Stage

15

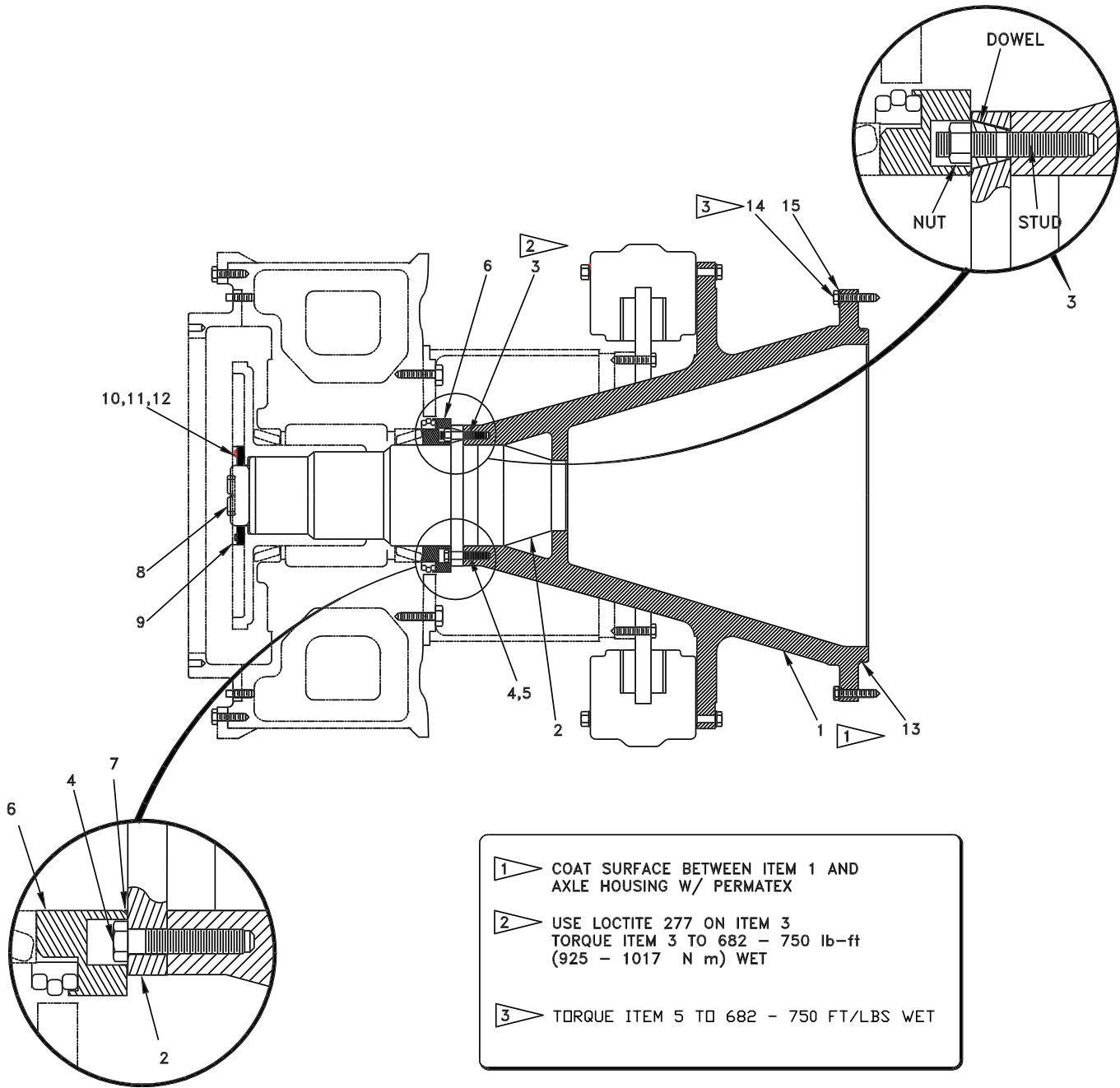


# Planet Assembly, Second Stage

28



# Axle Housing Group

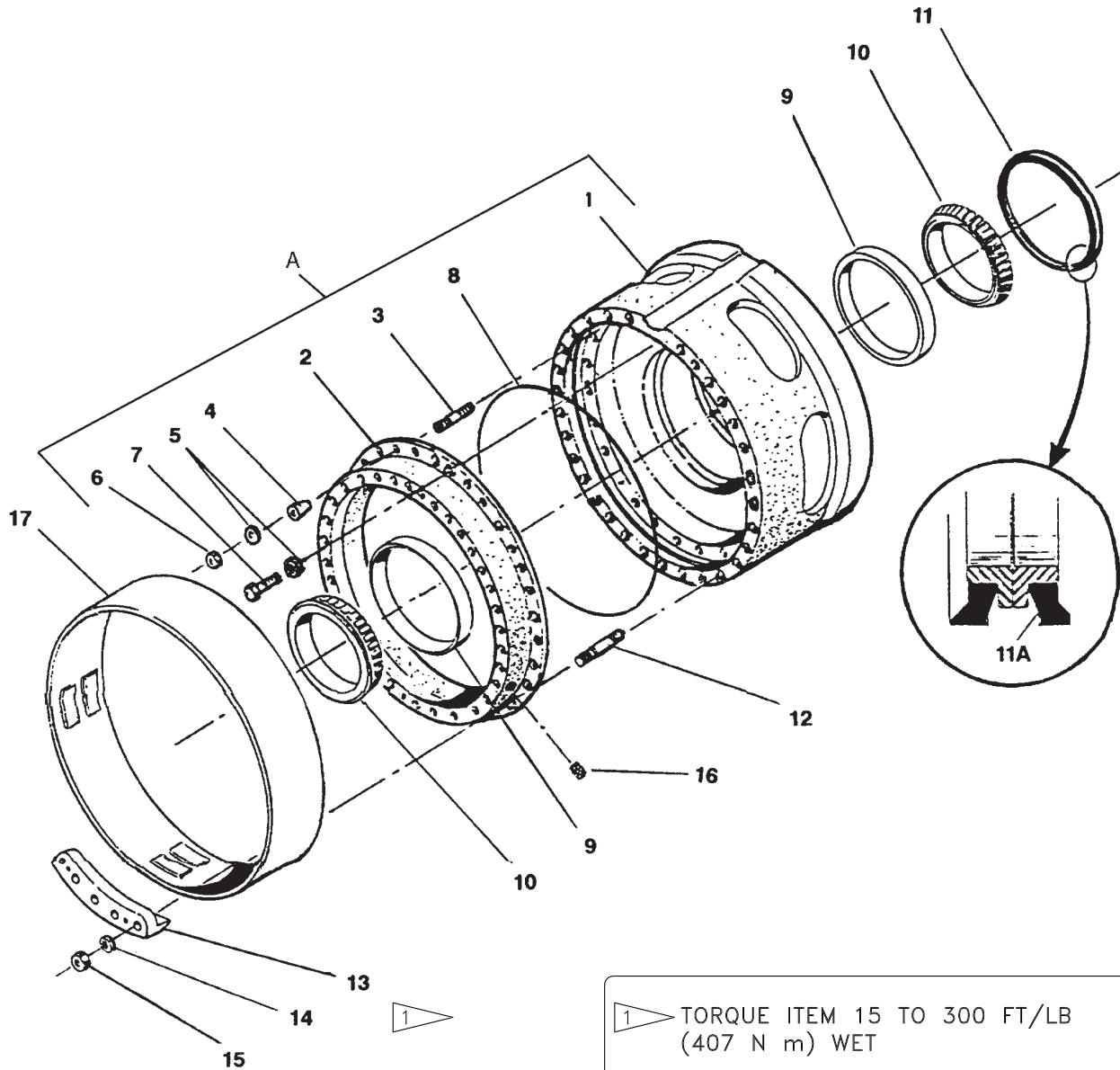


Item	Part No.	Qty	Description	Item	Part No.	Qty	Description
	-----	<b>2</b>	<b>Axle Housing Group</b>				
1	572490	1	. Housing, Axle Extension	8	225480	1	. Bearing
2	225475	1	. Stub End, Axle	9	225479	1	. Nut
3	* 571706	1	. Kit, Tapered Stud Sets	10	225395	1	. Lock Bar, Slotted Nut
	237883	4	. . Stud	11	238028	1	. Bolt
	237884	4	. . Nut	12	225396	1	. Capscrew
	237885	4	. . Dowel	13	225481	1	. O-Ring
4	238026	14	. Bolt	14	224157	29	Capscrew
6	225477	1	. Adapter, Seal	15	225178	29	Washer
5	238025	14	. Washer, Special				
7	225478	1	. O-Ring				

\* Do Not Intermix Tapered Studs With Earlier Tapered Bolts.



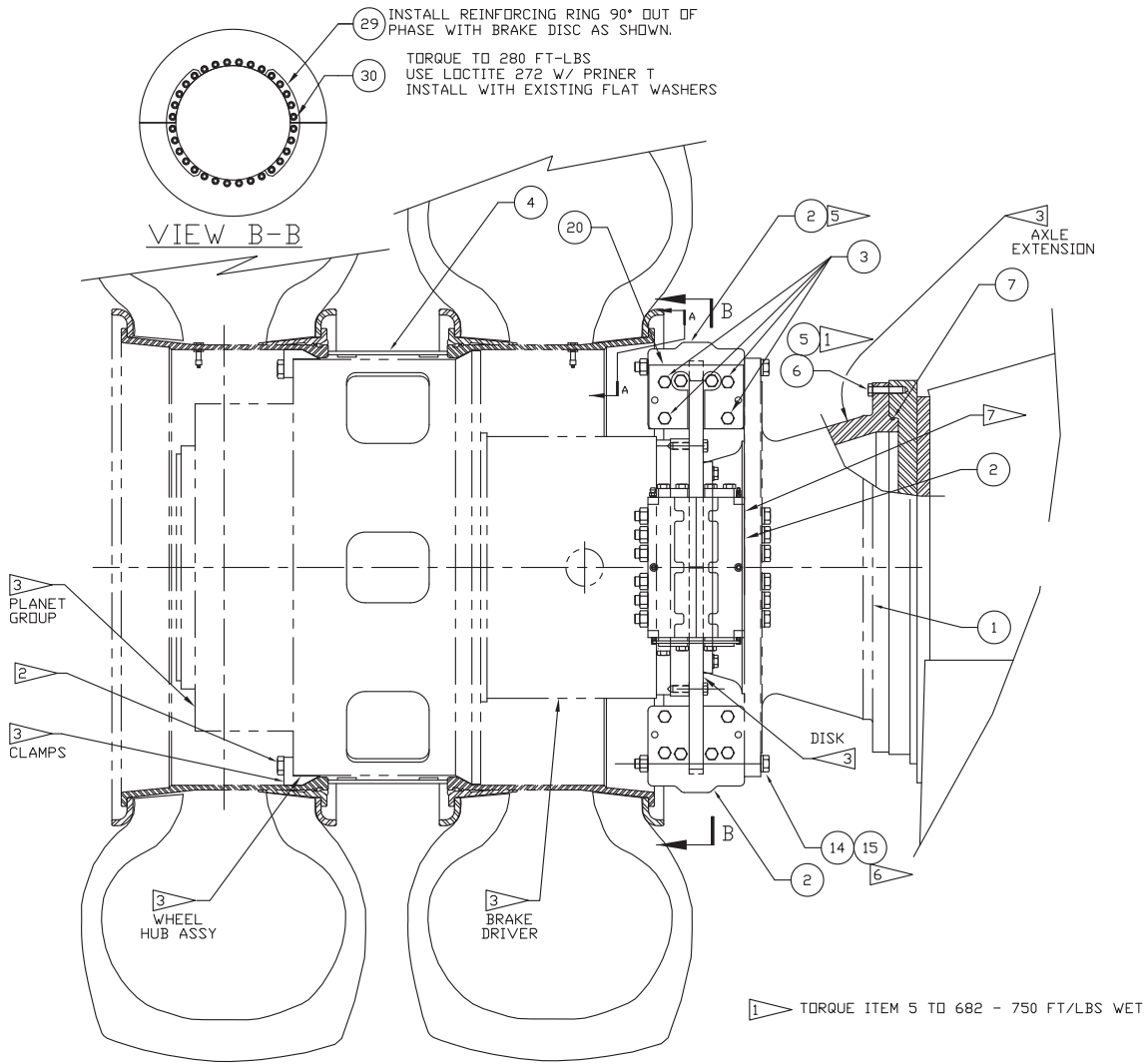
# Internal Gear and Planet Group



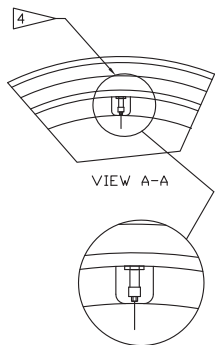
Item	Part No.	Qty	Description	Item	Part No.	Qty	Description
		<b>2</b>	<b>Wheel Hub Group</b>				
	*a -----	1	. Wheel Hub Assembly (Narrow)	12	225466	45	. Stud
A	239167	1	. Wheel Hub Assembly (Wide)	13	*c 252261	9	. Clamp, Rim
1	239145	1	.. Wheel Hub (Wide)	13	*d 225469	15	. Clamp, Rim
2	238031	1	.. Planet Adapter	14	225467	45	. Washer
3	238027	8	.. Stud	15	225468	45	. Nut
4	225412	8	.. Cone, Dowel	16	238022	1	. Plug
5	225467	32	.. Washer	17	*c 565862	2	. Spacer Band
6	238019	8	.. Nut	17	*d 225470	1	. Spacer Band
7	238029	24	.. Capscrew				
8	*b 238024	1	.. O-Ring				
9	*b 225463	2	. Bearing Cup				
10	*b 225464	2	. Bearing Cone				
11	*b 225465	1	. Seal Assembly, Wheel				

\*a No Longer Available. See Parts Marketing Bulletin No. PMB 9401  
 \*b Included In Wheel Hub Bearing & Seal Kit: 588578  
 \*c Used With Wide Spaced Dual Radial Tires  
 \*d Used With Narrow Spaced Dual Bias Tires

# Brake Group



PERFORM ABOVE PROCEDURE TO OPPOSITE SIDE OF AXLE HOUSING TO COMPLETE ASSY.



1 TORQUE ITEM 5 TO 682 - 750 FT/LBS WET

2 TORQUE TO 300 FT/LBS WET

3 THESE PARTS AND RELATED HARDWARE ARE INCLUDED IN THE WHEEL END AXLE KIT ITEM #1

4 ALIGN VALVE STEM WITH CUT OUT IN HUB FLANGE ON BOTH INSIDE AND OUTSIDE RIMS. VALVE STEM CAP MAY HAVE TO BE REMOVED FOR ADEQUATE CLEARANCE WHILE INSTALLING RIMS.

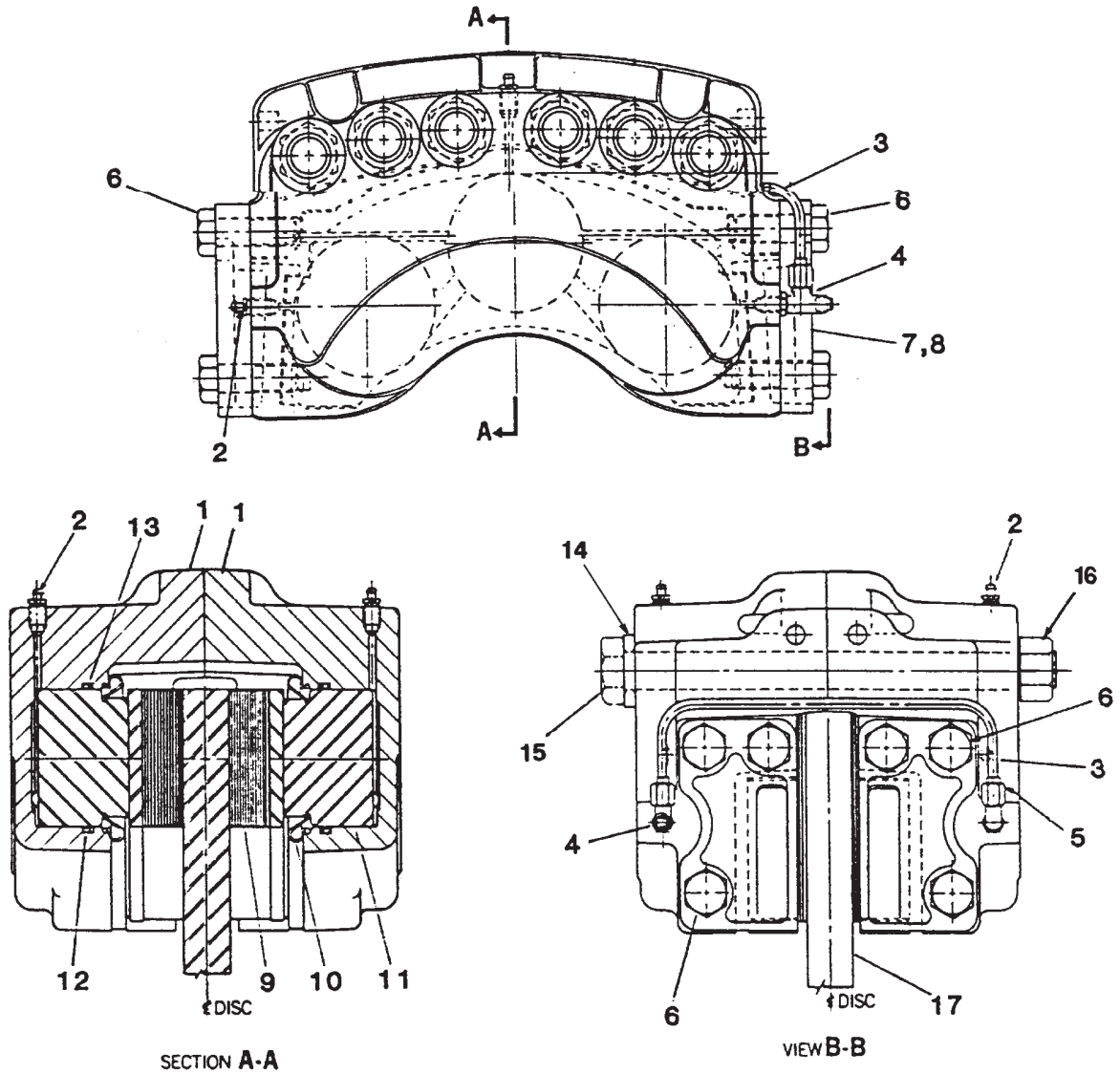
5 BRAKE IS ROTATED 180° TO VIEW BOTTOM BOLT CALL OUT

6 TO FASTEN BRAKE CALIPER ASSY. TO WHEEL END KIT USE ITEMS 14 & 15 WITH WASHER SUPPLIED WITH BRAKE. UNDER THE HEAD OF THE CAPSCREWS ONLY. TORQUE TO 770 FT/LBS WET USING LOCKTITE 272.

7 SHIM AS NEEDED, USE SHIMS PROVIDED WITH CALIPERS.

Item	Part No.	Qty	Description	Item	Part No.	Qty	Description
	-----	<b>2</b>	<b>Brake Group</b>				
1	238816	1	. Kit, Drive Axle	14	226635	36	. Capscrew
2	569956	6	. Caliper, Brake - See Page 11	15	221720W	36	. Nut, Esna
3	R13806363	30	. Capscrew	20	558989	6	. Brakeline Weldment, Lower
4	565862	2	. Wheel Spacer Assembly	29	577985	4	. Plate, Dblr
5	Y17C-1664	58	. Capscrew	30	R13811153	40	. Capscrew
6	225178	58	. Hard Washer				
7	225481	2	. O-Ring				

# Brake Caliper

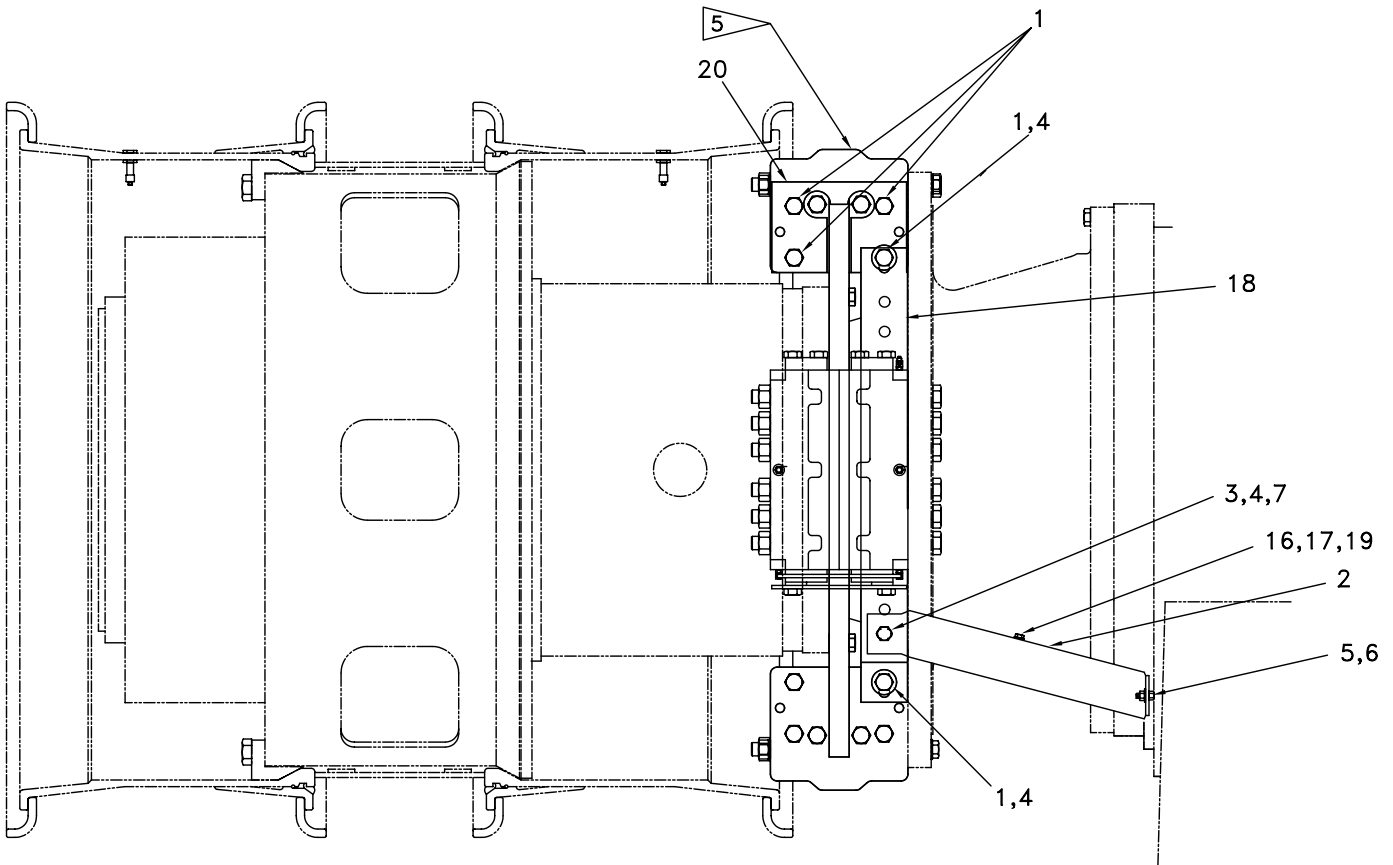


Item	Part No.	Qty	Description	Item	Part No.	Qty	Description
	<b>569956</b>		<b>Brake Caliper</b>				
1	225498	2	. Brake Housing	10	* 225503	6	. Dust Shield
2	219613	4	. Bleeder	11	225504	6	. Piston
3	225499	1	. Tubing	12	* 203464	6	. O-Ring
4	212717	1	. Fitting	13	* 225505	6	. Back-up Ring
5	209486	1	. Fitting	14	239217	6	. Washer, Special
6	239216	12	. Capscrew	15	-----	Ref	Bolt - See Page 10
7	225500	2	. Retainer Plate, LH	16	-----	Ref	Nut - See Page 10
8	225501	2	. Retainer Plate, RH	17	-----	Ref	Brake Disc - See Page 10
9	250200	2	. Brake Lining				

\* Included in 575352 Service Kit

# Brake Guard Group

Used on S/N L4130-209 thru L4130-212

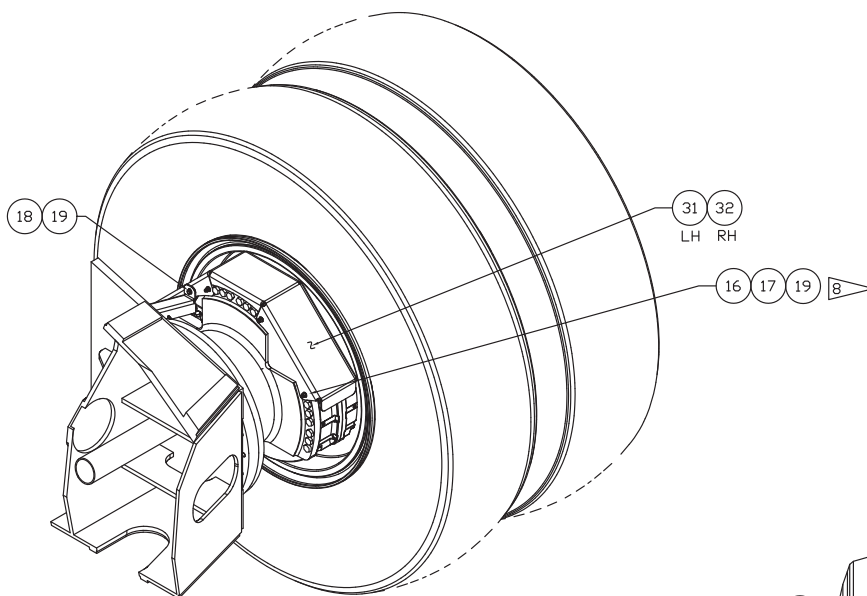


BRAKE HEAD IS ROTATED 180° TO VIEW  
 BOTTOM BOLT CALL OUT

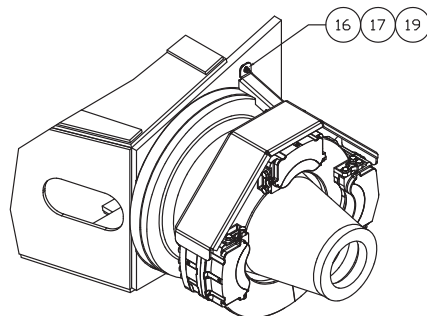
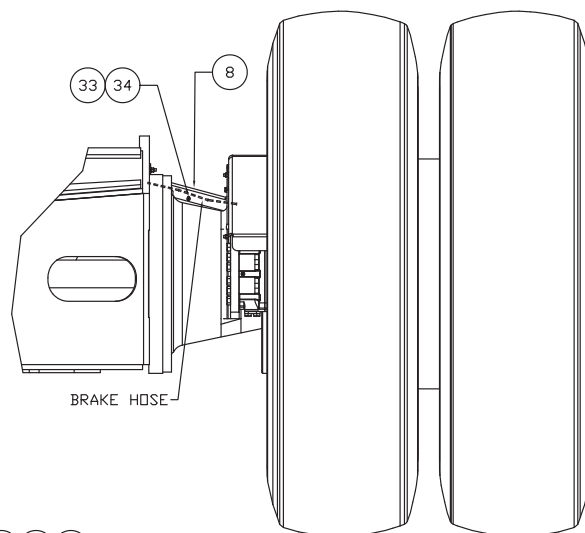
Item	Part No.	Qty	Description	Item	Part No.	Qty	Description
	-----	1	<b>Brake Guard Group</b>				
1	237119	30	. Capscrew	16	231625	2	. Capscrew
2	573367	2	. Bracket	17	223587	2	. Nut
3	00103325	2	. Washer	18	573270	4	. Brake Guard
4	00106267	18	. Washer	19	00103343	6	. Washer
5	00271560	2	. Capscrew	20	558989	2	. Brakeline, Lower
6	00274821	2	. Nut				
7	00271556	2	. Capscrew				

# Brake Guard Group

First used on S/N L4130-213

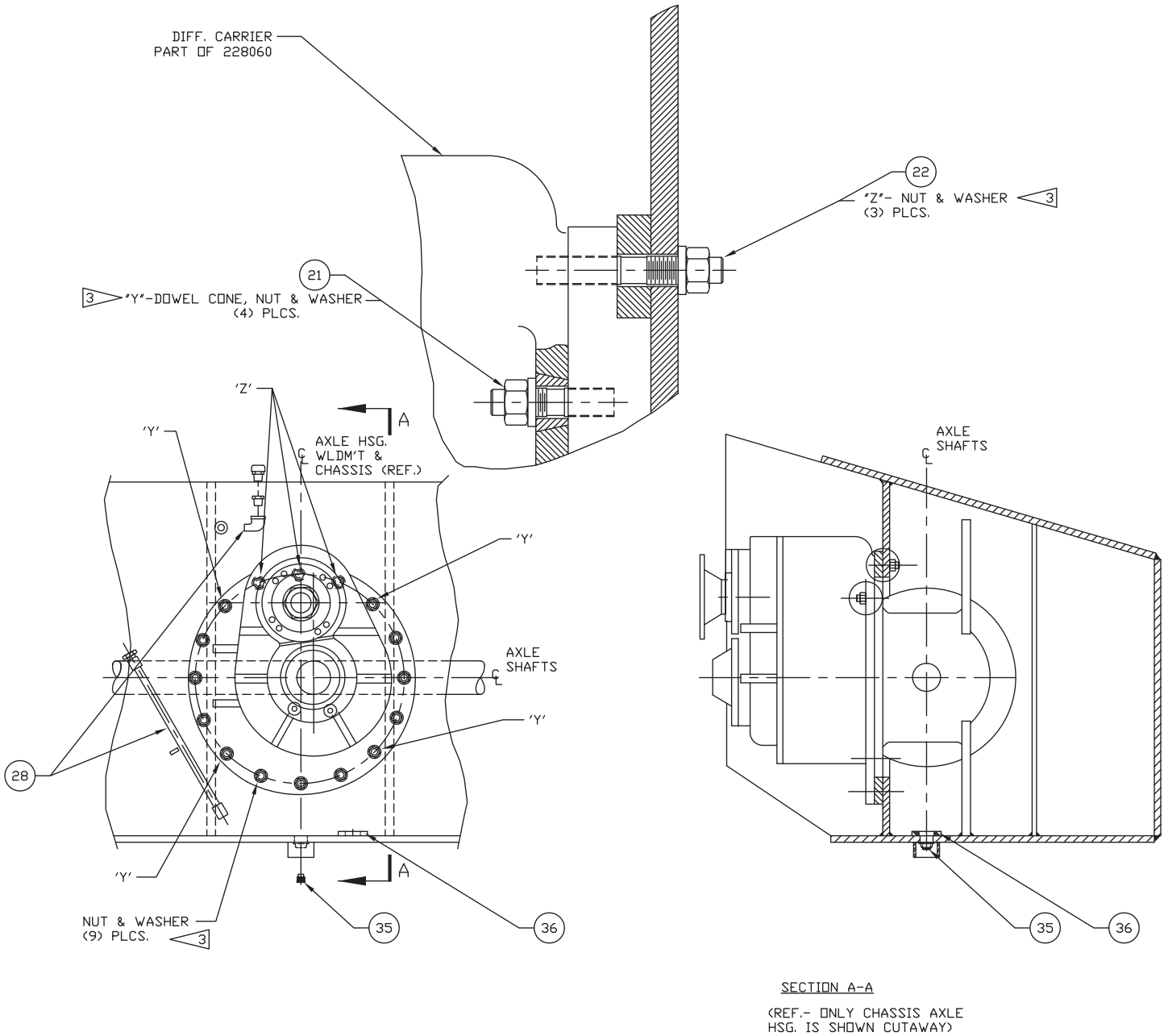


8 LOCATE BRAKE COVERS  
(ITEMS 30 & 31) AND  
SHOOT STUDS ONTO AXLE  
EXTENSION P/N 572490



Item	Part No.	Qty	Description	Item	Part No.	Qty	Description
	-----	1	<b>Brake Guard Group</b>				
8	581708	2	. Plate,Hose Guard	31	581705	1	. Plate,LH
16	R1318146	10	. Stud, Weld	32	581706	1	. Plate,RH
17	223587	10	. Nut, Esna	33	R13811047	2	. Capscrew
18	200454W	2	. Capscrew	34	R13811191	2	. Locknut
19	00103343	12	. Flat Washer				

# Housing Components



Item	Part No.	Qty	Description	Item	Part No.	Qty	Description
	-----	1	<b>Housing Components</b>				
21	225182	4	. Stud	35	201319	1	. Plate, Magnetic
22	225183	3	. Stud	36	R525293	1	. Magnet, Ceramic
28	* 558702	1	. Oil Level Tube/Breather				

\* See Separate Coverage