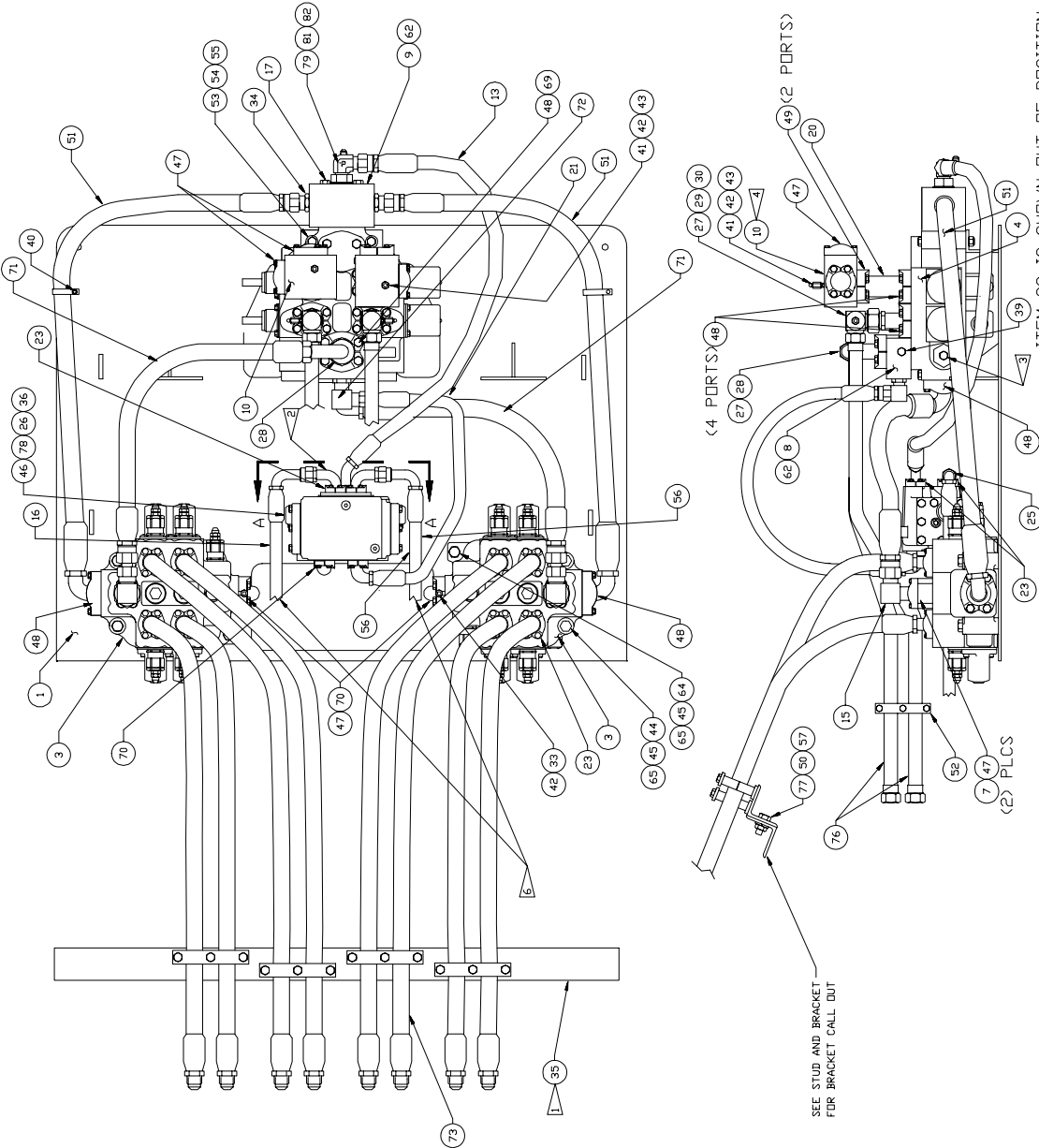
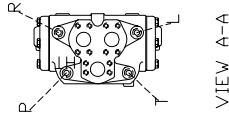

Valve Module



- 1 ROUTE HOSE BEFORE ASSEMBLING ITEM 35 TO AVOID BINDING.
- 2 THIS PORT IS PLUMBED TO THE STEM PORT OF THE R.H. CYL. & BASE PORT OF THE L.H. CYL.
- 3 REFER TO FORM 130-8 FOR RELIEF VALVE PRESSURE SPECIFICATIONS.
- 4 REFER TO THE HYD SYSTEM HOIST & TILT ON THE UNIT MASTER SHEET FOR CONTINUATION OF PLUMBING.
- 5 REFER TO THE HYD. SYSTEM CHASSIS ON THE UNIT MASTER SHEET FOR CONTINUATION OF RETURN PLUMBING.
- 6 REFER TO HYD. SYSTEM, STEERING FOR CONTINUATION OF PLUMBING.



VIEW A-A

Vavle Module

Item	Part No.	Qty	Description	Item	Part No.	Qty	Description
	577743		Valve Module				
1	577969	1	. Valve Plate	46	* 234082	1	. Steering Flow Amplifier
3	* 566303	2	. Holddown/Kickoff Valve	47	11740	8	. Kit, Split Flange
4	* 229439	1	. Hoist & Tilt Valve		201568	4	. . Lockwasher
7	234660	2	. Valve, Check		201615	4	. . Capscrew
8	527371	1	. Manifold		203446	1	. . O-Ring
9	563190	1	. Manifold		209536	2	. . Clamp Half
10	522589	2	. Manifold	48	11767	8	. Kit, Split Flange
12	209481	1	. Fitting		200604	4	. . Lockwasher
13	234226	1	. Hose Assembly		209537	2	. . Clamp Half
15	224780	2	. Fitting		222379	4	. . Capscrew
16	234657	1	. Hose Assembly	49	12721	4	. Kit, Split Flange
17	223085	4	. Capscrew		200604	4	. . Lockwasher
20	522604	2	. Fitting		209538	2	. . Clamp Half
21	226567	1	. Hose Assembly		222379	4	. . Capscrew
23	11759	11	. Kit, Split Flange	50	224202	2	. Nut, Esna
	201567	4	. . Lockwasher	51	230757	2	. Hose Assembly
	202201	4	. . Capscrew	52	225310	2	. Clamp
	203443	1	. . O-Ring	56	231155	1	. Hose Assembly
	209535	2	. . Clamp Half	57	223690	2	. Flat Washer
25	225128	2	. Fitting	62	203519	1	. O-Ring
26	222677	3	. Flat Washer	64	223915	2	. Capscrew
27	14248	3	. Fitting	65	230021	6	. Flat Washer
28	210084	1	. Fitting	69	00179896	4	. Capscrew
29	556099	1	. Fitting	70	224780	3	. Fitting
30	520145	1	. Fitting	71	231136	2	. Hose Assembly
33	225107	2	. Fitting	72	221140	1	. Fitting
34	209619	1	. Fitting	73	227251	8	. Hose Assembly
35	570052	1	. Clamp Mounting	76	522453	2	. Tube Assembly
36	223595	3	. Lockwasher	77	201635	2	. Capscrew
39	209423	1	. Fitting	78	234881	3	. Capscrew
40	209702	2	. Clamp	79	212705	1	. Fitting
41	209752	4	. Fitting	81	566627	1	. Fitting
42	228040	6	. Coupler, Male	82	232862	1	. Fitting
43	209743	4	. O-Ring				
44	230336	4	. Capscrew				* See Separate Coverage
45	230897	6	. Nut, Esna				