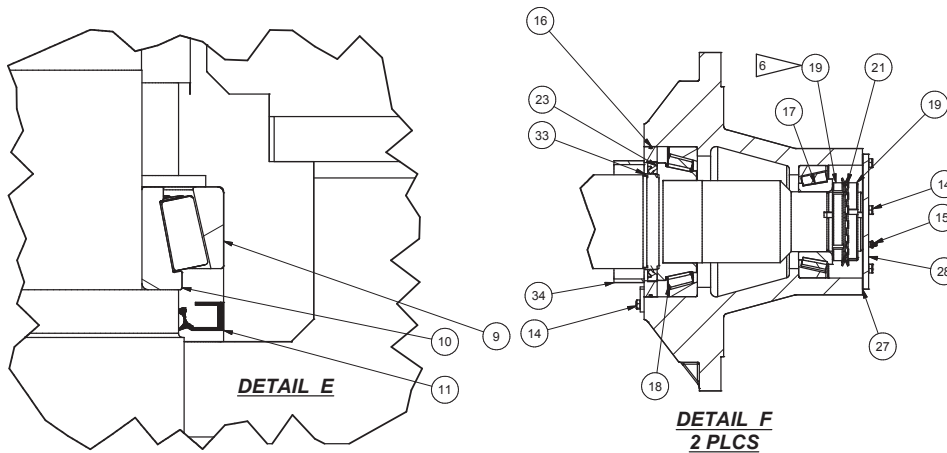
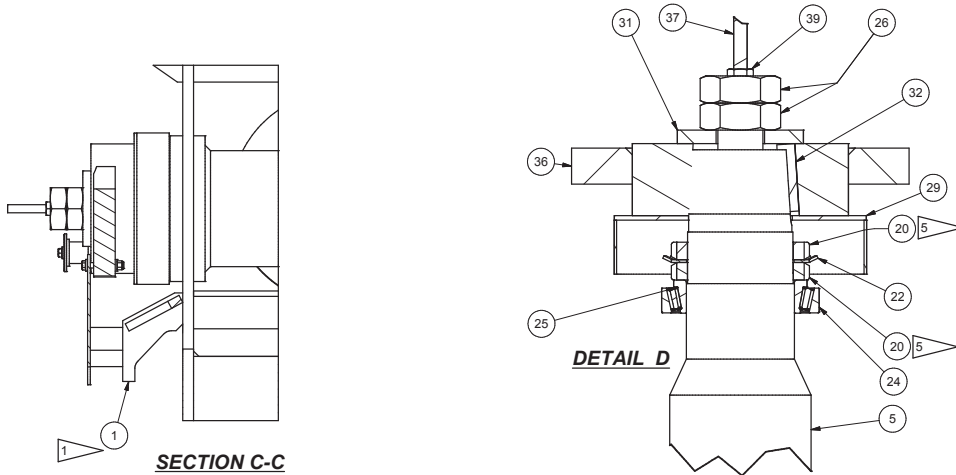
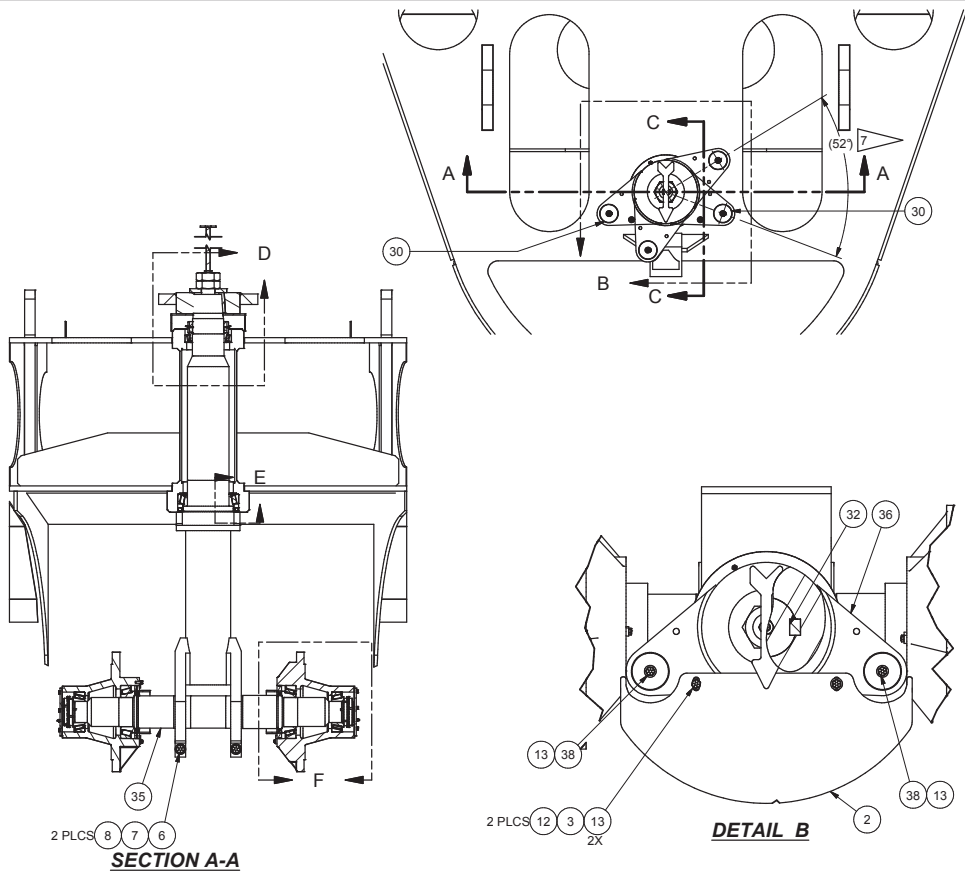

Tailfork Installation



Tailfork Installation

Item	Part No.	Qty	Description	Item	Part No.	Qty	Description
577696 Tailfork Installation w/Stop							
1	568843	1	. Stop, Steering	22	207510	1	. Lockwasher
2	568848	1	. Plate	23	208870	2	. Seal
3	224202	2	. Nut, Esna	24	212198	1	. Bearing Cup
5	564179	1	. Stem, Tailfork	25	212199	1	. Bearing Cone
6	225776	2	. Capscrew	26	220221	2	. Jam Nut
7	225178	2	. Washer	27	510444	2	. Gasket
8	234989	2	. Locknut	28	501241	2	. Cap, Dust
9	214471	1	. Bearing Cup	29	501248	1	. Cap Assembly, Dust
10	214472	1	. Bearing Cone	30	501254	2	. Plate, Cap
11	214464	1	. Seal	31	530618	1	. Washer
12	R13811083	2	. Capscrew	32	505370	1	. Key
13	223690	6	. Flat Washer	33	508834	2	. Seal, Race
14	Y17C-0616	16	. Capscrew	34	508842	2	. Seal Retainer Assembly
15	00191758	2	. Fitting, Lube	35	521865	1	. Axle, Tailfork
16	203564	2	. O-Ring	36	544649	1	. Arm Weldment, Steering
17	204540	2	. Bearing Cone	37	533813	1	. Tailwheel Indicator Assembly
18	204603	2	. Bearing Cone	38	Y18C-0820	2	. Capscrew
19	207501	4	. Locknut	39	247008	1	. Jam Nut
20	207504	2	. Locknut				
21	207507	4	. Lockwasher				

- NOTES:**
- 1 LOCATE THE STEERING STOP SO THAT EACH STEERING CYLINDER HAS APPROXIMATELY 1/4" OF UNUSED CYLINDER STROKE WHEN RETRACTED. EACH EAR OF THE TILLER ARM SHOULD MAKE EQUAL CONTACT WITH THE STOP.
 - 2 AFTER THE AXLE HAS BEEN INSERTED INTO THE TAILPOST SO THAT IT STOPS AGAINST IT'S LARGEST DIAMETER INSTALL HARDWARE, WASHER MUST BE INSTALLED UNDER NUT, TORQUE CAPSCREW TO 750-800 FT-LBS.
 - 3 TORQUE 1500-1800 FT-LBS; FOLLOW PROCEDURE 80-119 FOR ROLLING TORQUE.
 - 4 TORQUE TO 800-1000 FT-LBS
 - 5 TORQUE TO 2400 FT-LBS
 - 6 SEE PROCEDURE 80-119 FOR TAILPOST INSTALLATION
 - 7 RETRACT CYLINDERS 1/4" TO 3/8" PRIOR TO HITTING THE STOP