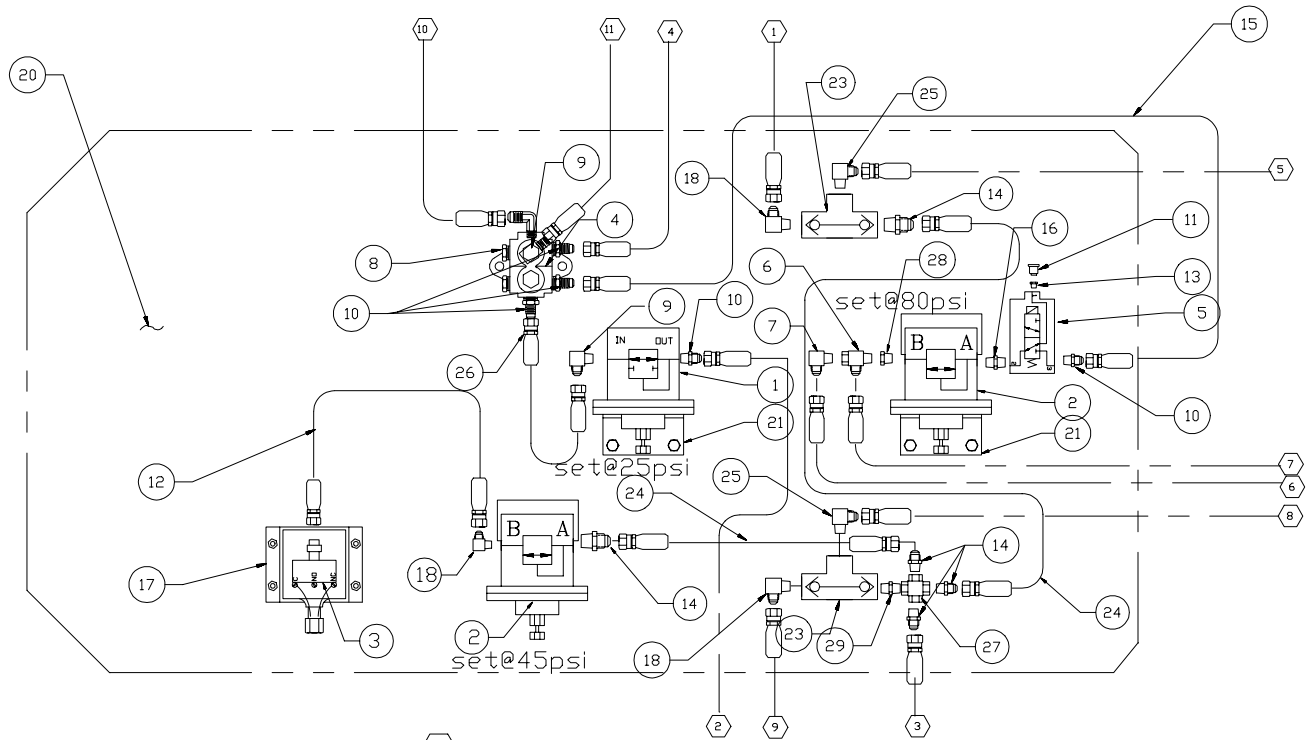


Air Valve Module



- 1 TO LEFT BRAKE BUTTON
- 2 TO BRAKE BUTTONS(SUPPLY)
- 3 FROM TREADLE VALVE
- 4 TO PARK BRAKE SWITCH ON PANEL
- 5 TO LEFT RELAY
- 6 CONNECT TO SEAT
- 7 CONNECT TO PILOT CONTROLS

- 8 TO RIGHT RELAY
- 9 TO RIGHT BRAKE BUTTON
- 10 TO SUPPLY PRESSURE/AIR TANK
- 11 TO TREADLE VALVE

FOR THOSE UNITS WITH OPTIONAL JAKE BRAKE, DELETE ITEM 7 AND INSTALL P/N 214001 INSTEAD.

Item	Part No.	Qty	Description	Item	Part No.	Qty	Description
	<b>577533</b>		<b>Air Valve Module</b>				
1	* 201358	1	. Regulator Valve	16	222321	1	. Fitting
2	* 201352	2	. Holdback Valve	17	541732	1	. Bracket
3	219150	1	. Switch, Pressure	18	209920	3	. Fitting
4	207902	1	. Manifold	20	577578	1	. Plate, Air Valve
5	* 239444	1	. Valve, Solenoid 24V	21	545588	2	. Bracket
6	209952	1	. Fitting	23	207921	2	. Shuttle Valve
7	209317	1	. Fitting	24	219398	1	. Hose Assembly
8	209512	5	. Fitting	25	209397	2	. Fitting
9	209394	2	. Fitting	26	216471	1	. Hose Assembly
10	209921	4	. Fitting	27	209497	1	. Fitting
11	210299	1	. Air Cleaner	28	229944	1	. Fitting
12	216477	2	. Hose Assembly	29	217494	1	. Fitting
13	209500	1	. Fitting				
14	209392	4	. Fitting				

\* See Separate Coverage