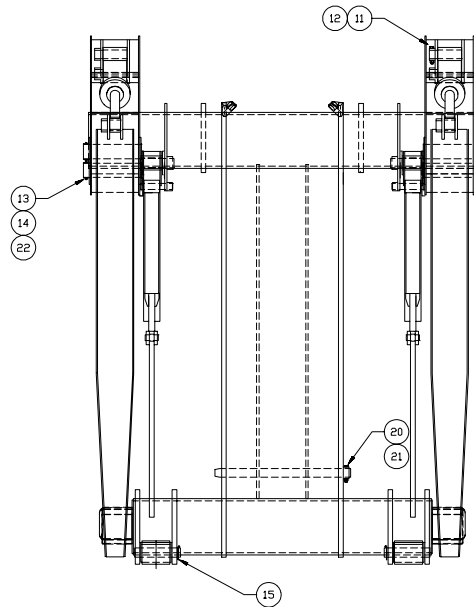
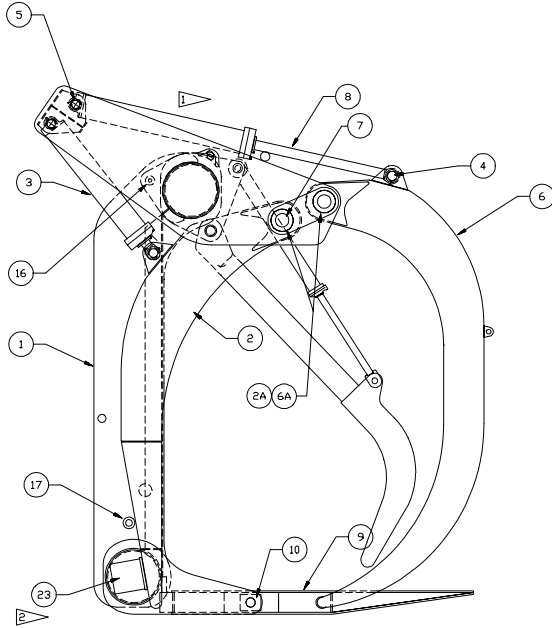
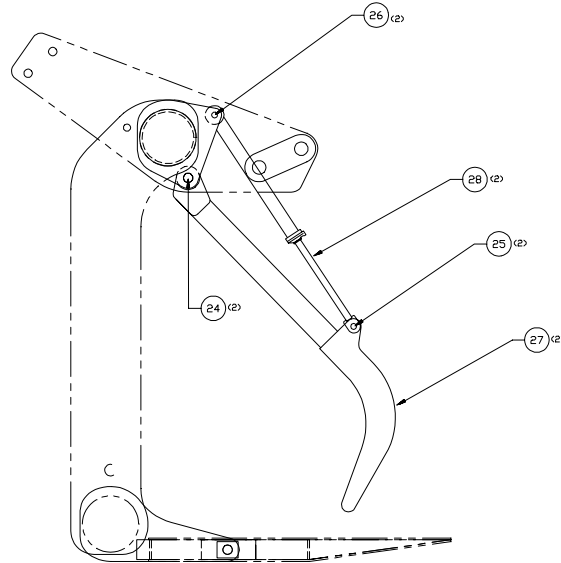


Carriage Assembly



▶ WHILE LOCATING HOLDDOWN CYLINDER FULLY RETRACTED, DO NOT ALLOW THE STEM PIN TO DROP BELOW THE TOP OF THE MOUNTING BRACKET PLATE AS SHOWN.

▶ SET STOP TO ASSURE KICK OFF CYLINDER DOES NOT BOTTOM OUT BY A .25 INCH MIN. CLEARANCE. RELOCATE IF NEEDED.



Item	Part No.	Qty	Description	Item	Part No.	Qty	Description
	577403		Carriage Assembly				
1	577404	1	. Carriage Weldment	14	223374	8	. Capscrew
2	561461	2	. Kickoff Weldment	15	225070	2	. Pin, Cotter
2A	558159	2	. . Bushing	16	204503	2	. Bearing
3	* 572699	2	. Cylinder Assembly	17	561517	1	. Pin
4	558362	4	. Pin	20	226554	1	. Capscrew
5	558363	4	. Pin	21	219927	1	. Nut, Esna
6	561462	2	. Holddown Weldment	22	223654	8	. Nut, Esna
6A	558159	2	. . Bushing	23	558197	2	. Kickoff Stop Weldment
7	558364	4	. Pin Weldment	24	558324	2	. Pin
8	* 572698	2	. Cylinder Assembly	25	558325	2	. Pin
9	577432	2	. Tine Weldment	26	558326	2	. Pin
10	558366	2	. Pin	27	570207	2	. Holddown Arm, Auxiliary
11	237925	8	. Capscrew	28	* 558313	2	. Cylinder Assembly, Auxiliary HD
12	00273852	8	. Nut, Esna				
13	558914	4	. Keeper				

* See Separate Coverage