

Hydraulic System - Steering

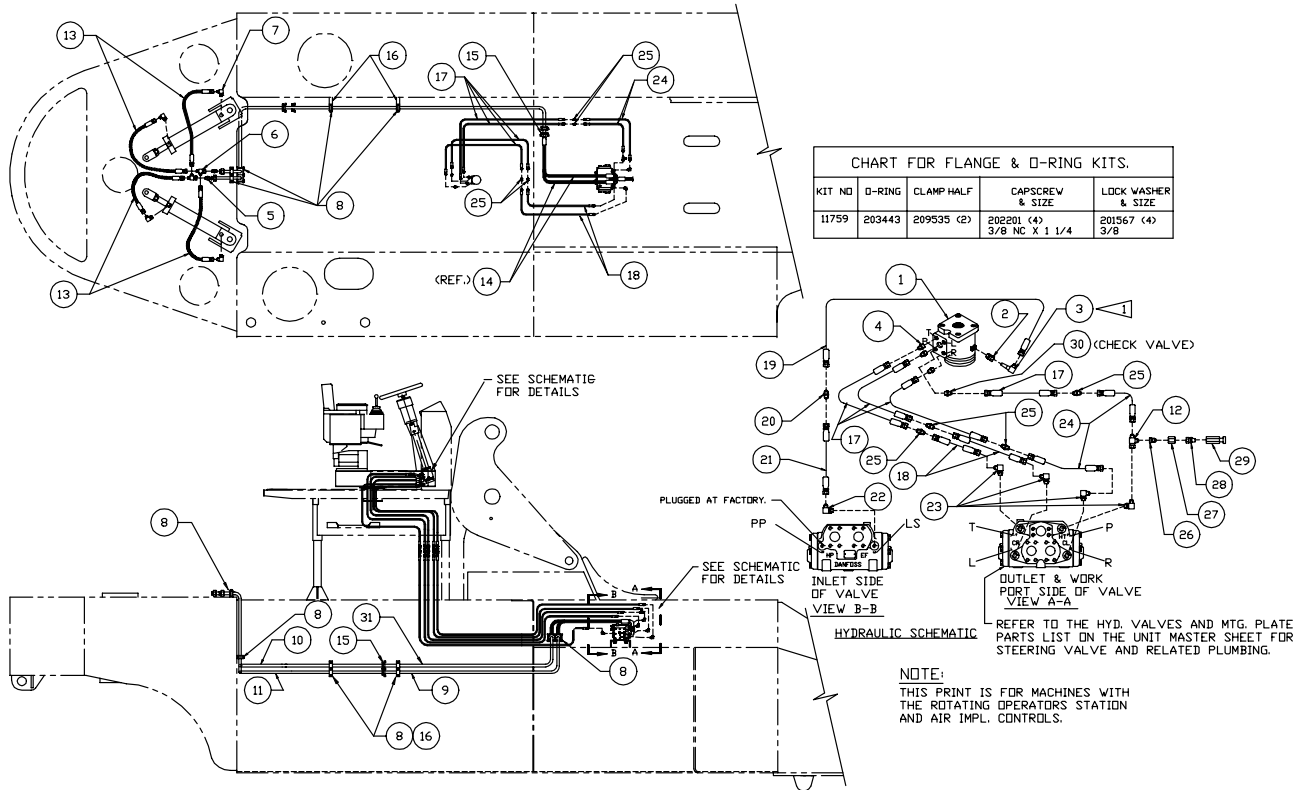


CHART FOR FLANGE & O-RING KITS.				
KIT NO	O-RING	CLAMP HALF	CAPSCREW & SIZE	LOCK WASHER & SIZE
11759	203443	209535 (2)	202201 (4) 3/8 NC X 1 1/4	201567 (4) 3/8

NOTE:
THIS PRINT IS FOR MACHINES WITH THE ROTATING OPERATORS STATION AND AIR IMPL. CONTROLS.

Item	Part No.	Qty	Description	Item	Part No.	Qty	Description
Hydraulic System - Steering							
1	* 234081	1	. Steering Unit	16	563897	2	. Tube
2	223545	1	. Fitting	17	234511	4	. Hose Assembly
3	212300	1	. Fitting	18	231338	2	. Hose Assembly
4	23577	3	. Fitting	19	237687	1	. Hose Assembly
5	209810	2	. Fitting	20	209436	1	. Fitting
6	209087	2	. Fitting	21	229556	1	. Hose Assembly
7	209490	4	. Fitting	22	209486	1	. Fitting
8	225310	5	. Clamp	23	23945	4	. Fitting
9	578142	2	. Tube Assembly	24	240210	2	. Hose Assembly
10	577378	1	. Tube	25	209438	4	. Fitting
11	577379	1	. Tube	26	215075	1	. Fitting
12	211562	1	. Fitting	27	212763	1	. Fitting
13	209602	4	. Hose Assembly	28	12786	1	. Fitting
15	11759	4	. Kit, Split Flange	29	228040	1	. Coupler, Male
	203443	1	. O-Ring	30	234209	1	. Check Valve
	209535	2	. Clamp Half	31	578141	1	. Tube Assembly
	202201	4	. Capscrew				
	201567	4	. Lockwasher				

* See Separate Coverage