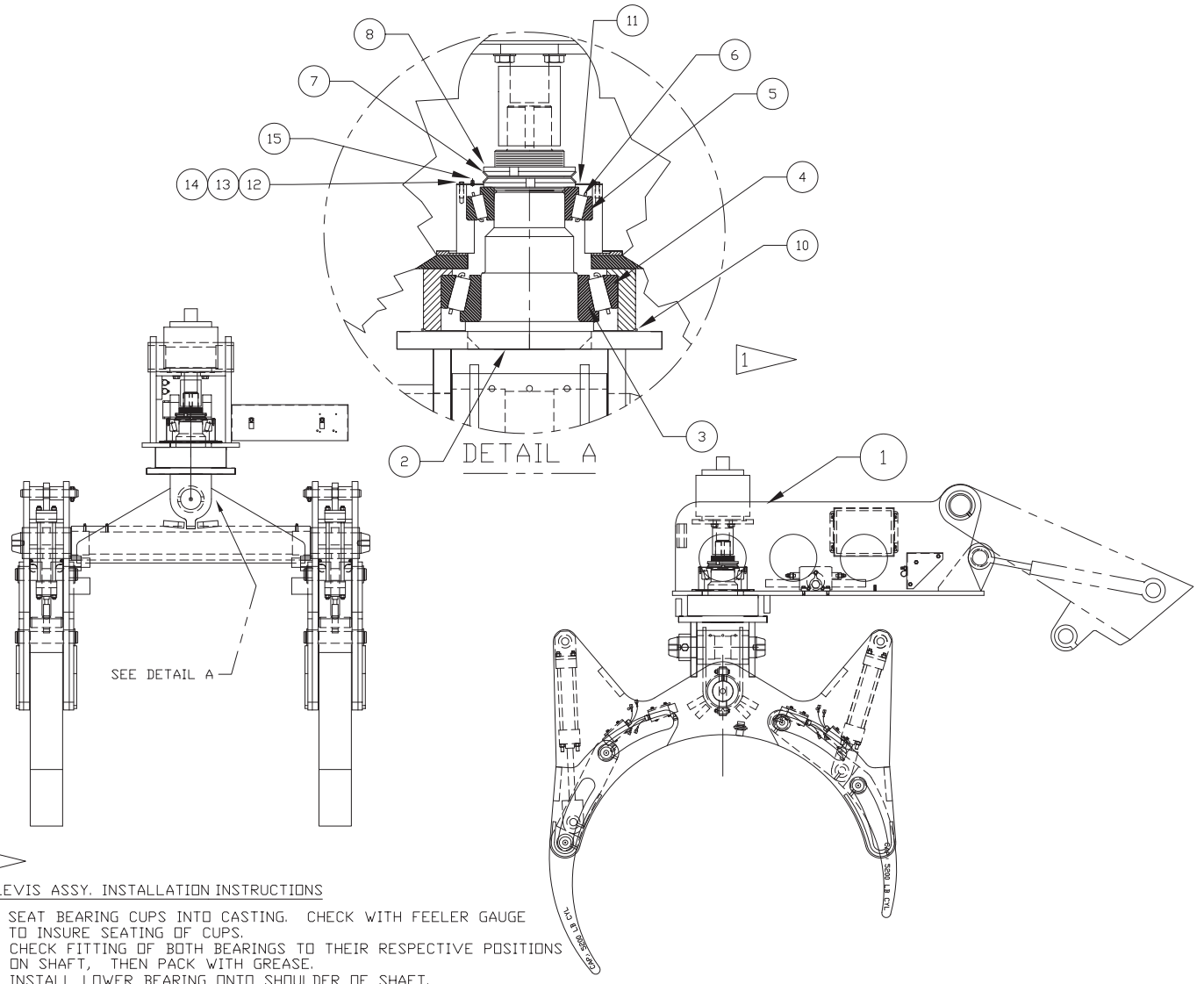


Kit, Grapple Assy, NCH20



CLEVIS ASSY. INSTALLATION INSTRUCTIONS

- 1) SEAT BEARING CUPS INTO CASTING. CHECK WITH FEELER GAUGE TO INSURE SEATING OF CUPS.
- 2) CHECK FITTING OF BOTH BEARINGS TO THEIR RESPECTIVE POSITIONS ON SHAFT, THEN PACK WITH GREASE.
- 3) INSTALL LOWER BEARING ONTO SHOULDER OF SHAFT. A. COVER THE SHAFT ABOVE THE BEARING WITH GREASE
- 4) LIFT CLEVIS SHAFT INTO HOUSING TO SEAT LOWER BEARING.
- 5) INSTALL TOP BEARING OVER CLEVIS SHAFT TO SEAT IN HOUSING.
- 6) INSTALL FIRST NUT BEVEL SIDE UP AND TORQUE TO 600 FT-LB.
- 7) INSTALL LOCK WASHER SPIDER.
- 8) INSTALL SECOND NUT BEVEL SIDE DOWN AND TORQUE TO 600 FT-LB.
- 9) BEND LOCK WASHER TABS TO SECURE LOCK NUTS.
- 10) PACK GRASE ON TOP OF BEARING AND INSTALL DUST COVER.

Item	Part No.	Qty	Description	Item	Part No.	Qty	Description
	<b>576093</b>		<b>Kit,Grapple Assembly</b>				
1	576152	1	. Head Weldment	8	207501	2	. Locknut
2	576154	1	. Clevis Weldment	10	232315	1	. O-Ring
3	204639	1	. Bearing Cup	11	576155	1	. Cover Weldment
4	204602	1	. Bearing Cup	12	R13810989	4	. Capscrew
5	204603	1	. Bearing Cone	13	R13802619	4	. Flat Washer
6	204540	1	. Bearing Cone	14	R13812512	4	. Washer
7	207507	1	. Lockwasher	15	00191758	1	. Fitting, Lube