

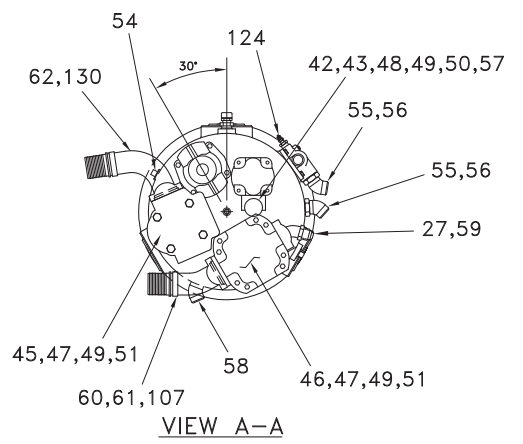
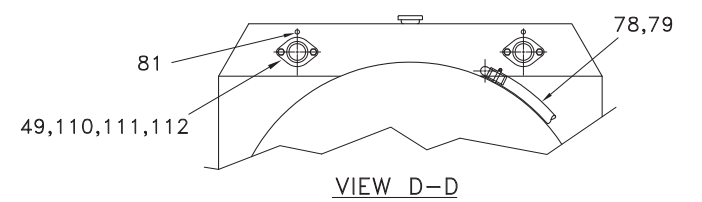
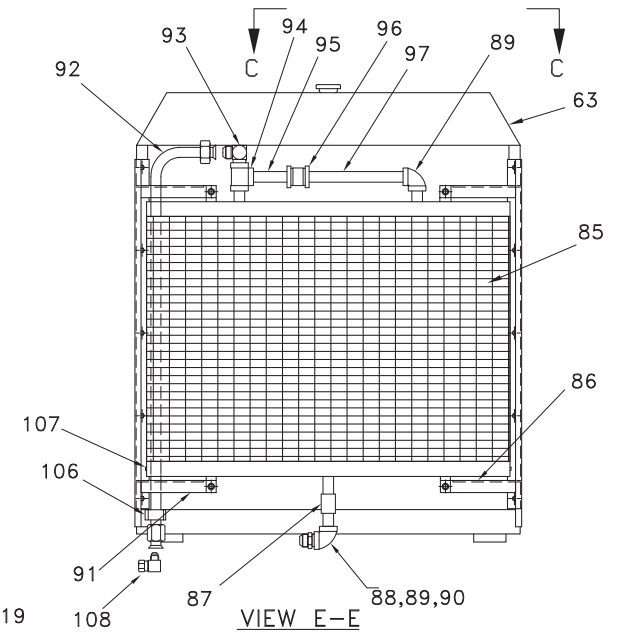
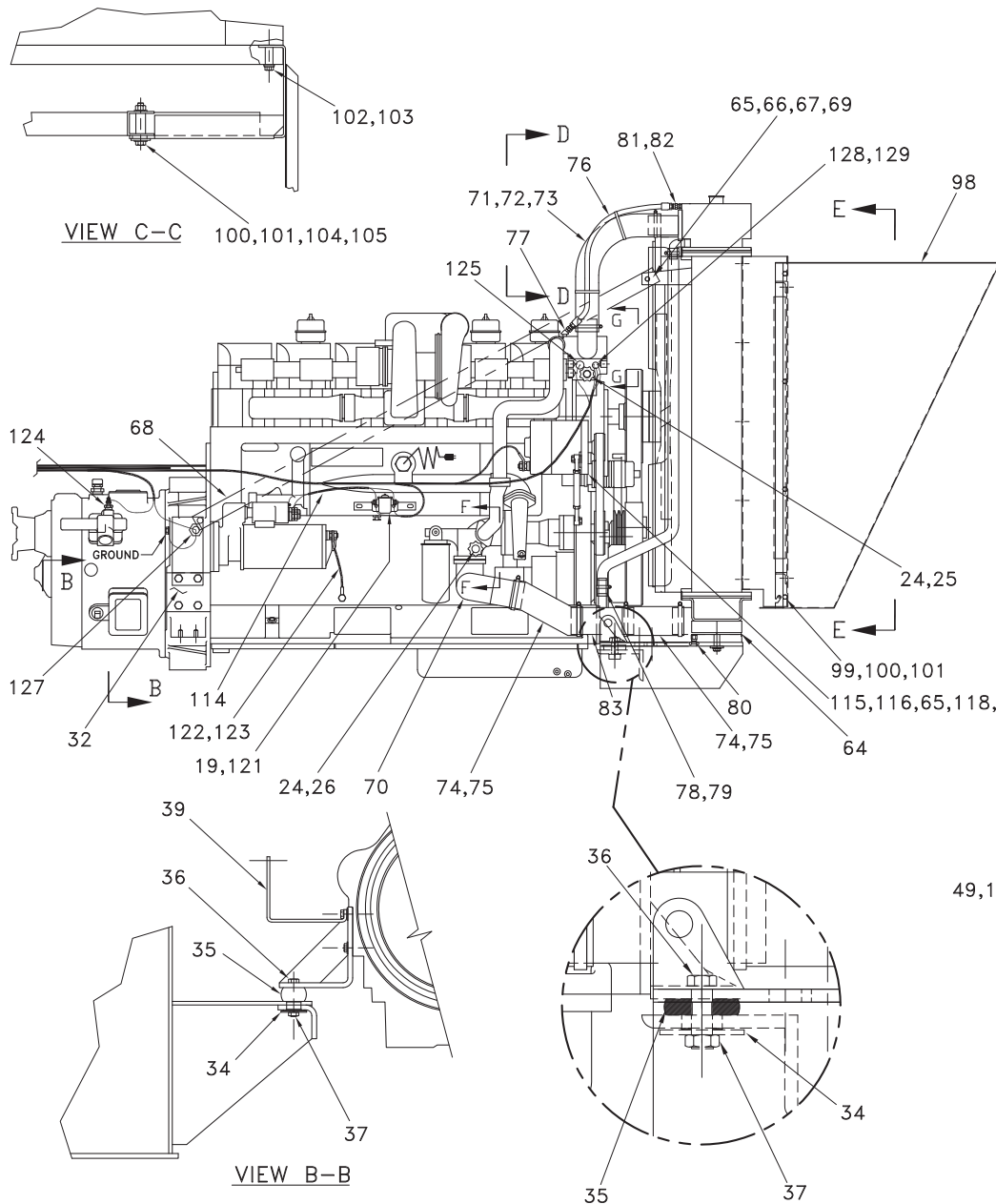
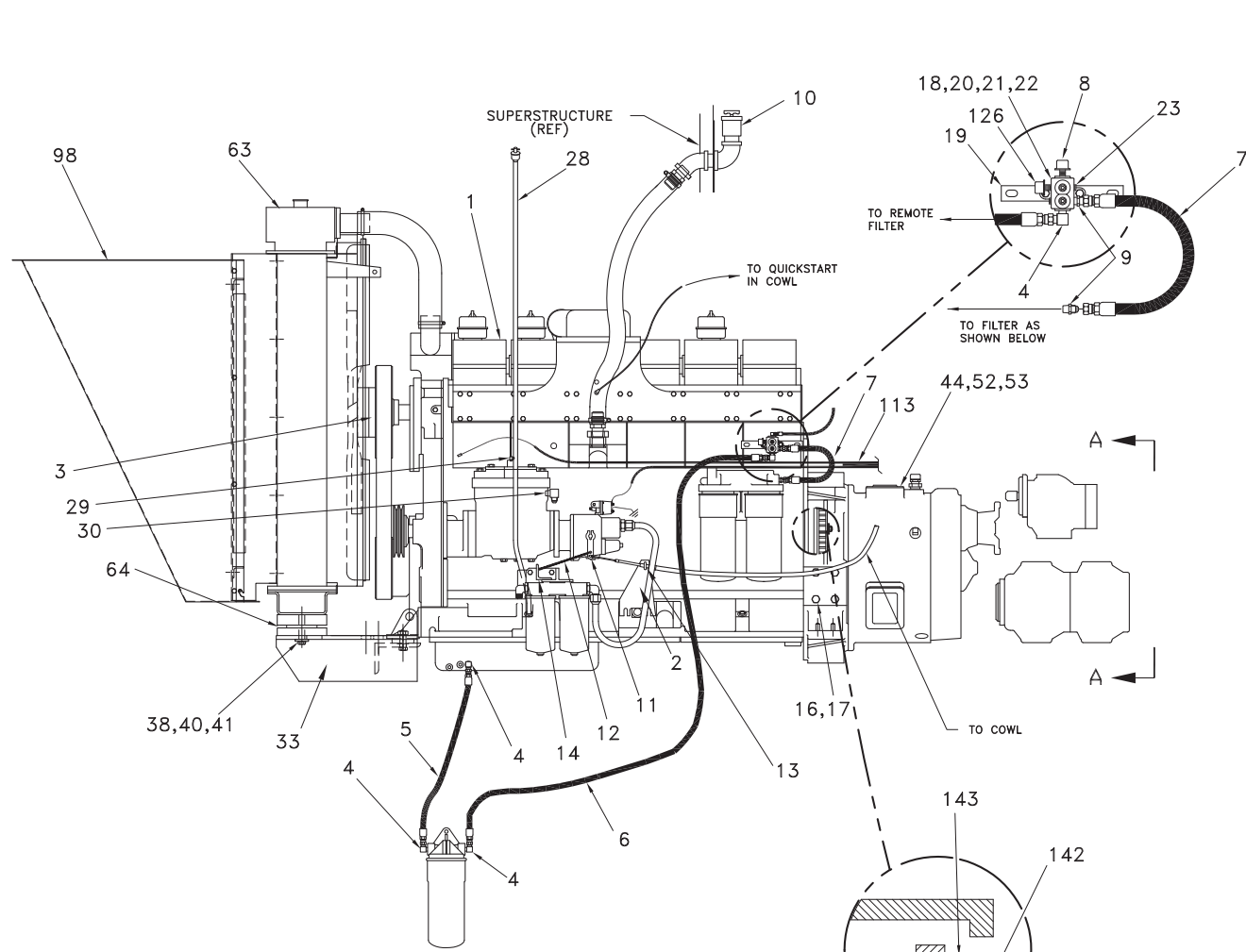
Power Unit

Power Unit

Item	Part No.	Qty	Description	Item	Part No.	Qty	Description
	574122		Power Unit				
1	* 239443	1	. Engine	35	224222	4	. Vibration Dampener
2	558980	1	. Bracket	36	177192W	4	. Capscrew
3	557037	1	. Spacer, Fan	37	223188	4	. Locknut
4	209413	4	. Fitting	38	Y17C-1032	2	. Capscrew
5	210792	1	. Hose Assembly	39	565194	2	. Bracket
6	214637	1	. Hose Assembly	40	566739	2	. Washer
7	218196	1	. Hose Assembly	41	00103325	2	. Lockwasher
8	236412	1	. Oil Pressure Sender	42	223794	1	. Fitting
9	209756	2	. Fitting	43	221186	1	. Fitting
10	* 568167	1	. Engine Oil Fill	44	* 235291	1	. Converter
11	224253	1	. Cable, Pivot	45	* 574131	1	. Pump
12	224653	1	. Spring	46	* 237947	1	. Pump
13	224349	1	. U-Bolt	47	505499	2	. Gasket
14	558769	1	. Bracket	48	203519	1	. O-Ring
15	217494	1	. Fitting	49	200454W	9	. Capscrew
16	Y17C-1028	8	. Capscrew	50	223909	4	. Lockwasher
17	223694	8	. Lockwasher	51	539968	2	. Sleeve, Pump
18	207902	1	. Manifold	52	134328W	12	. Capscrew
19	557695	2	. Bracket	53	201568	12	. Lockwasher
20	224120W	2	. Capscrew	54	222151	1	. Fitting
21	223696	2	. Lockwasher	55	16229	2	. Fitting
22	224209	2	. Nut, Esna	56	217657	2	. Fitting
23	00272979	4	. Plate, Pipe	57	R13811082	2	. Capscrew
24	203274	2	. Shutoff Valve	58	209420	1	. Fitting
25	209504	1	. Fitting	59	11740	2	. Kit, Split Flange
26	209505	1	. Fitting		201568	4	. Lockwasher
27	11741	2	. Fitting		203446	1	. O-Ring
28	563865	1	. Dipstick & Housing Assembly		209536	2	. Clamp Half
29	209405	1	. Fitting	60	560221	1	. Fitting Weldment,
30	209417	1	. Fitting	61	225661	1	. Kit, Split Flange
31	228926	1	. Fitting		203528	1	. O-Ring
32	556860	2	. Engine Mount		229082	4	. Capscrew
33	566517	1	. Engine Mount, Rear		230769	2	. Clamp Half
34	557376	4	. Flat Washer	62	569164	1	. Fitting

63	*	568851	1	. Radiator	99	Y17C-0616	8	. Capscrew
64		564550	2	. Pad	100	201570	12	. Spring Washer
65		222615	6	. Flat Washer	101	223654	12	. Locknut
66		223587	4	. Nut, Esna	102	221474W	10	. Capscrew
67		563596	4	. Plate	103	223657	10	. Lockwasher
68		556990	4	. Bar, Brace	104	180959W	4	. Capscrew
69		222476	4	. Capscrew	105	540058	4	. Tube, Spacer
70		562362	1	. Elbow	106	224347	1	. Clamp
71		211791	5'	. Hose, Radiator	107	00103878	3	. Plate, Pipe
72		215462	4	. Hose Clamp	108	210084	1	. Fitting
73		223872	4	. Tie Strap	110	200604	4	. Lockwasher
74		211807	3'	. Hose, Radiator	111	506669	2	. Gasket
75		203232	4	. Hose Clamp	112	523605	1	. Connector Assembly, Rad Top
76		207848	1	. Hose Assembly	113	559917	1	. Wiring Harness, 12V/24V Eng
77		212194	1	. Fitting	114	553582	1	. Wiring Harness, Starter Relay
78		225829	6'	. Hose, Radiator	115	* 234183	1	. Alternator
79		201431	2	. Hose Clamp	116	219884	1	. Capscrew
80		211398	1	. Draincock	118	219920	2	. Nut, Esna
81		209512	2	. Fitting	119	185813W	1	. Capscrew
82		209921	1	. Fitting	121	221801	1	. Relay
83		557055	1	. Tube, Coolant Fill	122	529449	1	. Wire Assembly, Ground
85		558464	1	. Oil Cooler	123	221560W	1	. Capscrew
86		562191	1	. Rail Weldment	124	236410	1	. Sender, Oil Temp
87		222155	2	. Fitting	125	236411	1	. Sender, Water Temp
88		00190570	1	. Nipple, Pipe	126	202889	1	. Switch, Oil Pressure
89		209186	2	. Fitting	127	225170	1	. Sensor, Magnetic Speed
90		225025	1	. Fitting	128	216102	1	. Alarmstat
91		562192	1	. Rail	129	00144046	1	. Bushing, Reducer
92		558913	1	. Tube Assembly	138	570775	1	Ring Gear Assembly
93		214220	1	. Fitting	139	570735	1	. Ring Gear
94		209177	1	. Fitting	140	570776	24	. Stud
95		540172	1	. Nipple	141	237315	96	. Belleville Washer
96		219155	1	. Coupling	142	237316	24	. Nut
97		558834	1	. Pipe, Cooler	143	-----	1	. Backing Plate - See Converter 3-2
98		563283	1	. Air Scoop				

* See Separate Coverage



- ▶ RING GEAR INSTALLATION PROCEDURE**
- A. REMOVE ALL BURRS FROM FLYWHEEL MOUNTING FACE AND PILOT BORE, AND CLEAN WITH SOLVENT. CHECK ENGINE CRANKSHAFT "END PLAY". INDICATOR READING MUST BE THE SAME BEFORE AND AFTER THE TORQUE CONVERTER IS MOUNTED TO THE ENGINE.
 - B. INSTALL (3) STUDS (ITEM 140) EQUALLY SPACED. TORQUE TO 33-36 LB-FT [4.6 - 5.0 KG-M].
 - C. INSTALL RING GEAR (ITEM 139) BY TAPPING LIGHTLY INTO PLACE.
 - D. INSTALL REMAINING STUDS, TORQUE TO 33-36 LB-FT [4.6 - 5.0 KG-M].
 - E. LUBRICATE STUD THREADS, BELLEVILLE WASHERS AND NUTS WITH SAE #10 OIL.
 - F. INSTALL BACKING RING (ITEM 143), BELLEVILLE WASHERS (ITEM 141), AND ELASTIC STOP NUTS AS SHOWN. TORQUE NUTS 45 LB-FT [6.2 KG-M]

