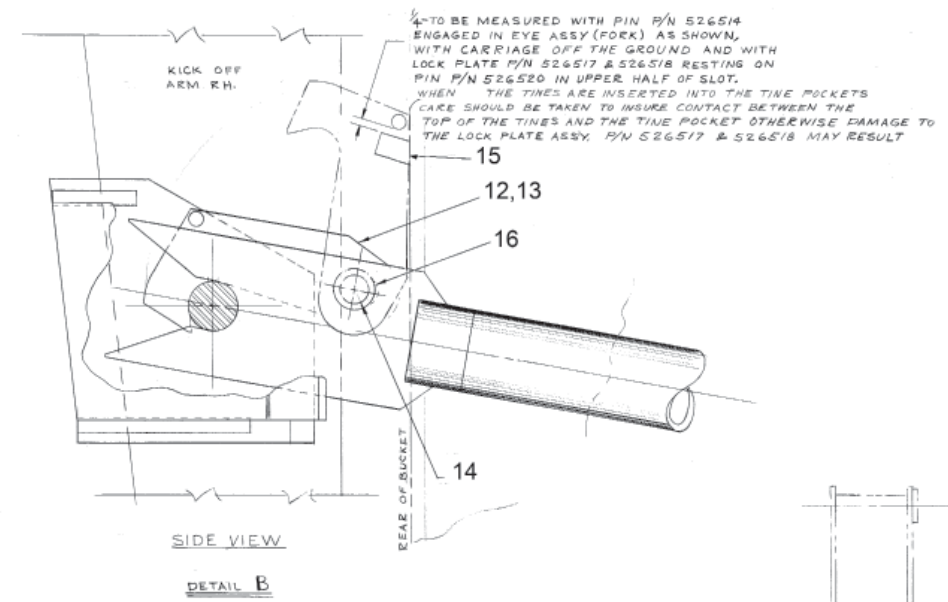
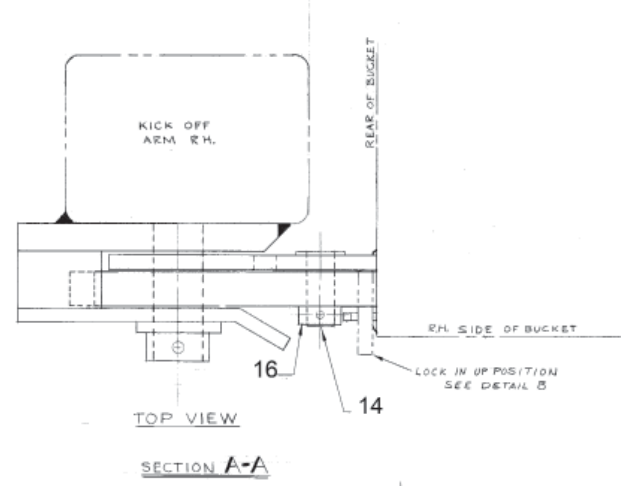

Bucket and Carriage Installation

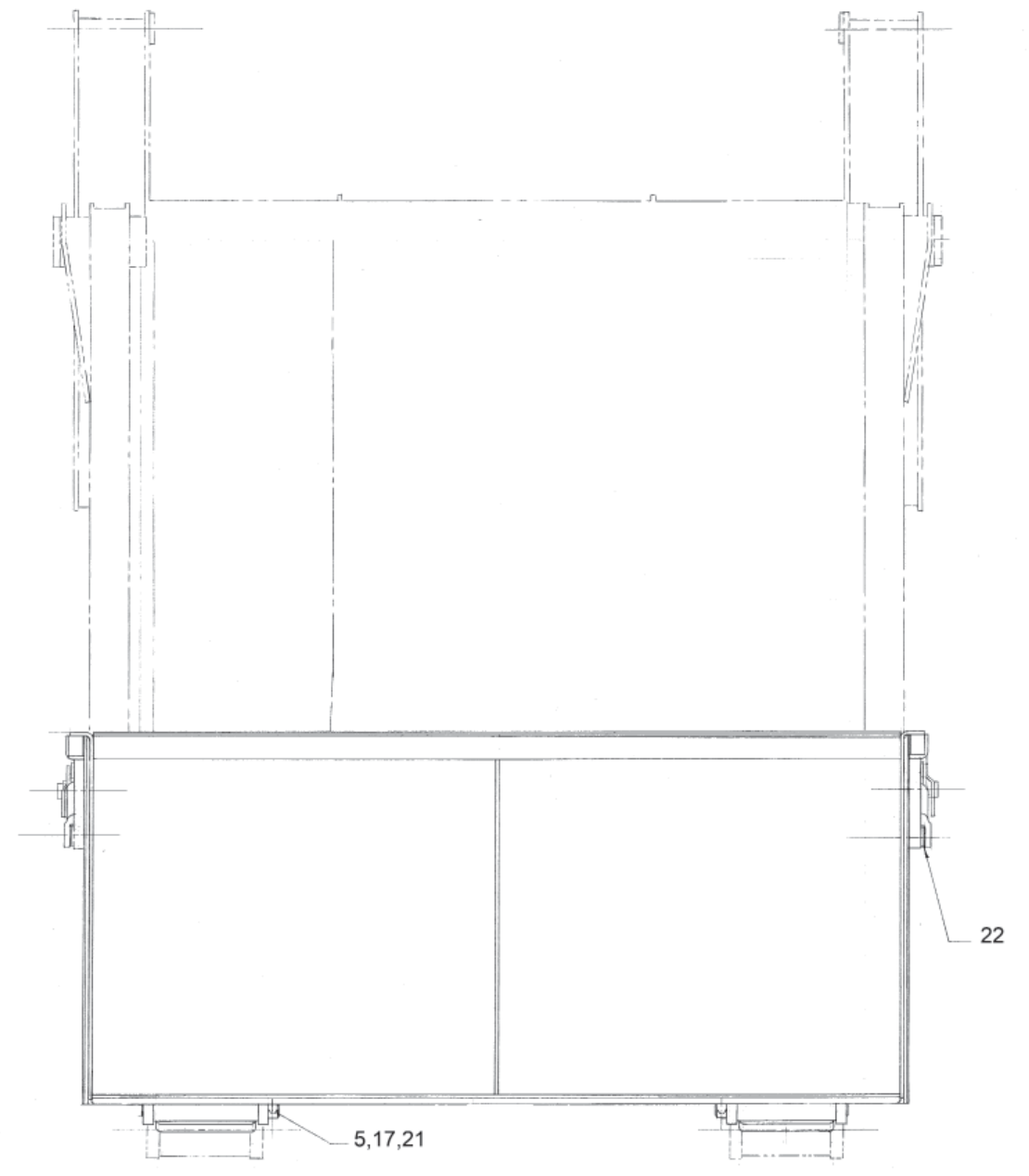
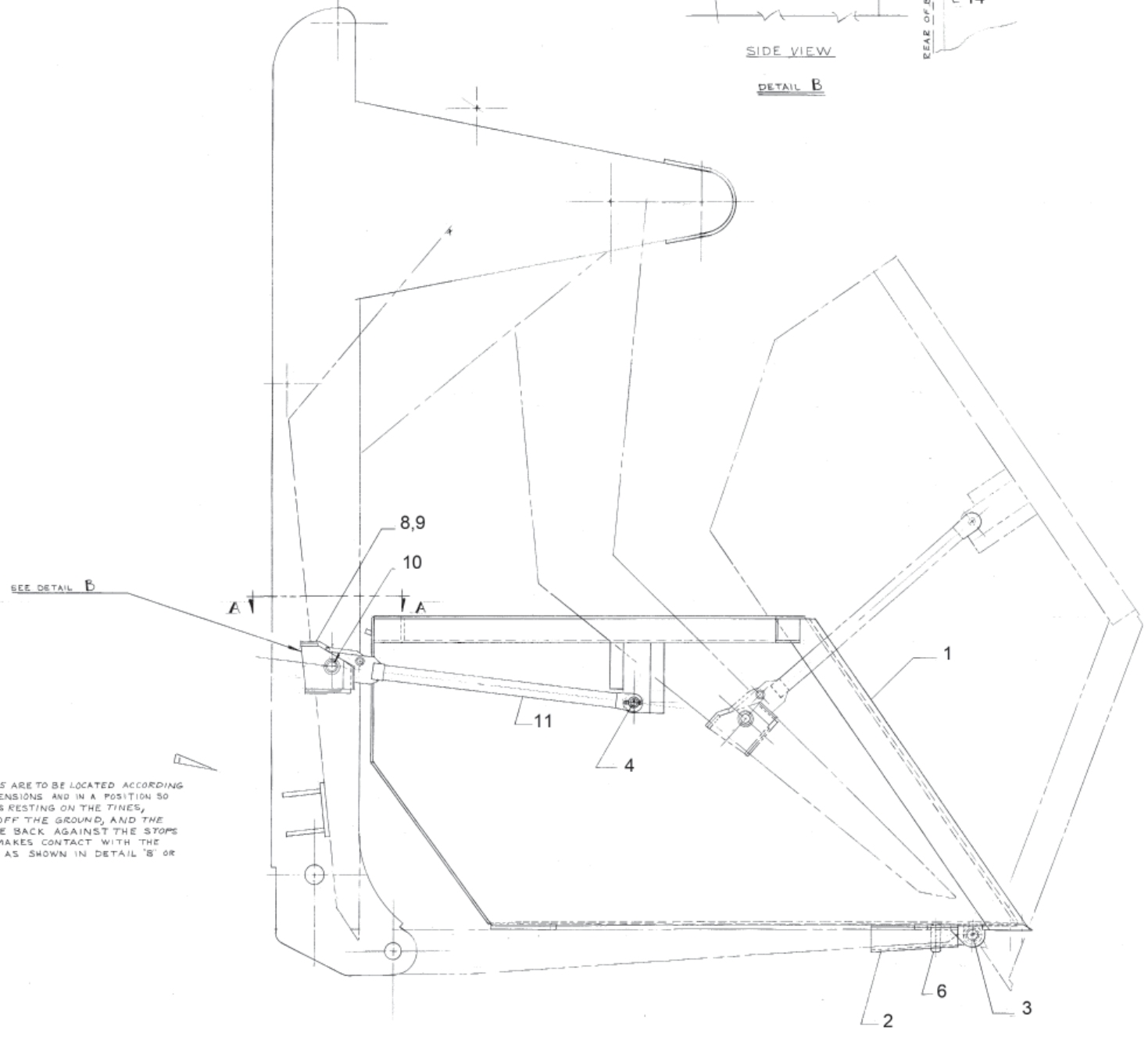
Bucket & Carriage Installation

Item	Part No.	Qty	Description	Item	Part No.	Qty	Description
	526053		Bucket/Carriage Installation	12	526517	1	. Lockplate Assembly,LH
1	525698	1	. Bucket Assembly	13	526518	1	. Lockplate Assembly,RH
2	526058	2	. Tine Pocket Assembly	14	526520	2	. Pin Assembly
3	526069	2	. Pin	15	526522	2	. Bracket
4	526072	2	. Pin	16	YEE-2	2	. Set Collar
5	526073	2	. Lock Collar	17	R13811042	6	. Capscrew
6	526074	2	. Pin Assembly	18	* 223654	6	. Locknut
8	526505	1	. Bracket Assembly, LH Mounting	19	* R13811082	2	. Capscrew
9	526506	1	. Bracket Assembly, RH Mounting	20	* 00271291	4	. Fitting
10	526514	2	. Pin	21	224202	2	. Nut
11	526070	2	. Link Assembly, Bucket Dump	22	220872	4	. Mach Bushing

* Not Illustrated



4- TO BE MEASURED WITH PIN P/N 526514 ENGAGED IN EYE ASSY (FORK) AS SHOWN, WITH CARRIAGE OFF THE GROUND AND WITH LOCK PLATE P/N 526517 & 526518 RESTING ON PIN P/N 526520 IN UPPER HALF OF SLOT. WHEN THE TINES ARE INSERTED INTO THE TINE POCKETS CARE SHOULD BE TAKEN TO INSURE CONTACT BETWEEN THE TOP OF THE TINES AND THE TINE POCKET OTHERWISE DAMAGE TO THE LOCK PLATE ASSY. P/N 526517 & 526518 MAY RESULT



P/N 526506 & 526505 ARE TO BE LOCATED ACCORDING TO THE 45° & 90° DIMENSIONS AND IN A POSITION SO WHEN THE BUCKET IS RESTING ON THE TINES, THE CARRIAGE IS OFF THE GROUND, AND THE KICKOFF ARMS ARE BACK AGAINST THE STOPS. PIN P/N 526514 MAKES CONTACT WITH THE FORKED EYE ASSY. AS SHOWN IN DETAIL 'B' OR THIS DRAWING.