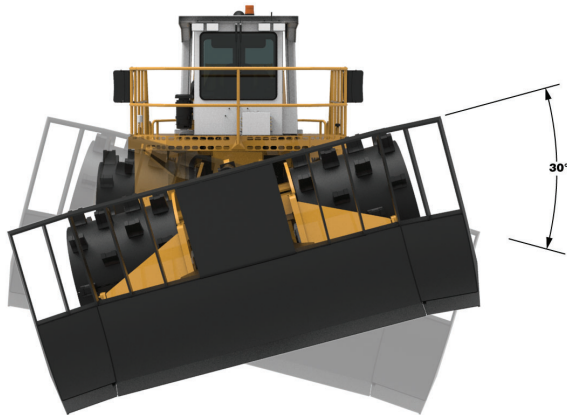


The Wagner Advantage: Landfill Compactors



Superior Stability

30° Front frame oscillation allows all four wheels to stay in constant contact with the ground while supplying maximum compaction. This eliminates costs associated with an oscillating rear axle and avoids creating a fire hazard common in other compactors by not allowing trash to enter the engine compartment.

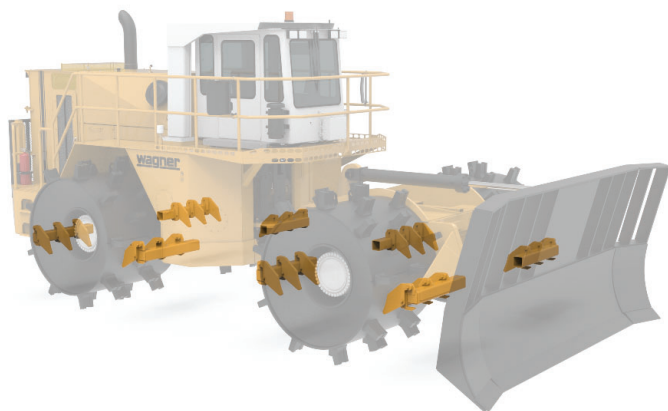
Secure Engine Compartment

The transmission, engine, and cooling system compartment is completely sealed underneath to prevent foreign material from entering. The cooling system is designed with easy swing doors for simple routine maintenance and a reverse airflow setting to blow out potentially trapped debris.



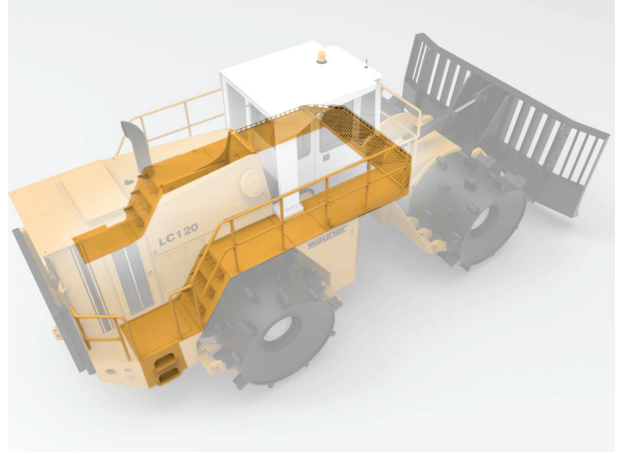
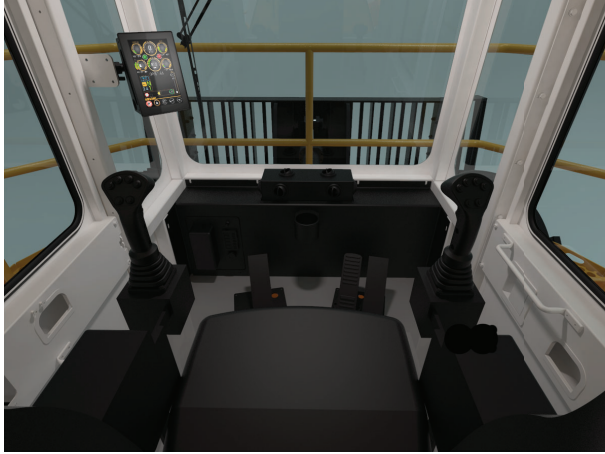
Variety of Wheel Feature Options

Wagner Compactors offer a variety of wheel features, including deep penetrating cleats, striker bars on the front and back of each wheel, and optional cleaner teeth that maximize cleaning and prevent debris from being thrown at the operator's cab. The inner wheel guard structure is also designed to minimize trash build up behind the wheels, which is a common problem in compactors.



Spacious Cab and Easy Machine Access

A spacious 2-door cab and stairway access on both sides of the machine allow the operator to enter or exit safely from either side. A catwalk in front of the operator's cab also allows easy access to both sides of the machine without having to dismount.



Extreme Durability

While competitors suggest a rebuild after 10,000 hours of use, Wagner doesn't suggest a rebuild until nearly 20,000 hours.

24/7 Support

Wagner has over 50 years of service and parts support experience on heavy equipment and offer 24-hour, 7 days-a-week support to provide exceptional quality that you can trust.



Allied Systems
COMPANY

Quality People - Quality Products

Proudly built in America, the LC120 and LC90 Landfill Compactors are made by Wagner, a division of Allied Systems Company. Wagner has been manufacturing heavy duty dozing equipment for more than 50 years, designed to operate 24 hours, 7 days a week, with equipment still in operation after more than 30 years of use.