

Landfill Compactors



wagner
A Division of Allied Systems Company

 MADE IN USA

The Wagner Landfill Compactor

The Wagner Landfill Compactor was developed to maximize refuse compaction while providing a safe and ergonomic environment for the operator. Wagner's knowledge of heavy equipment applications date back to the 1930's when the Wagner company was founded, and their legacy of success in quality has continued ever since.

Rugged durability, front frame oscillation, conventional drivetrain, and a spacious operator's cab are just some of the perks featured on the Wagner Landfill Compactor, and with the Wagner name on the side, quality is guaranteed.

The legacy continues...

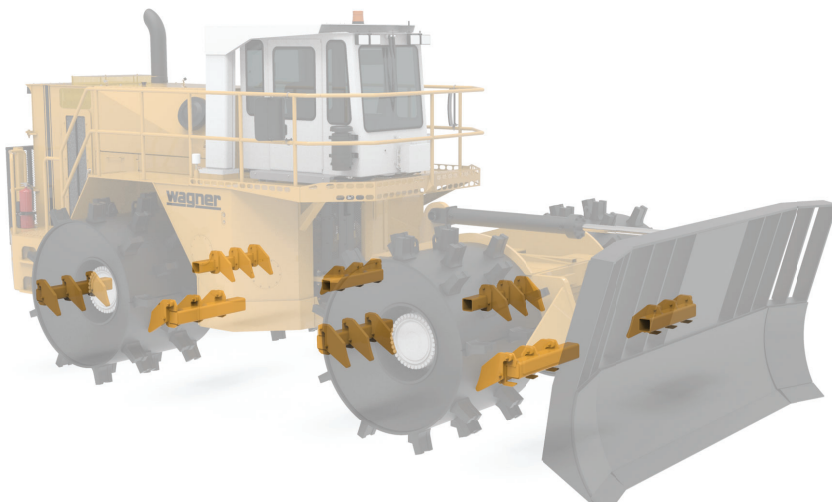




Spacious and Ergonomic Cab Design with heavy duty seat suspension and optional trainer seat offer increased operator comfort and safety.

Wagner Smart Screen provides easy access to System Parameters, including:

- System Parameters
- DEF Level
- Manual/Automatic Shifting
- Implement Disable System
- Parking Brake
- Extensive troubleshooting and diagnostics



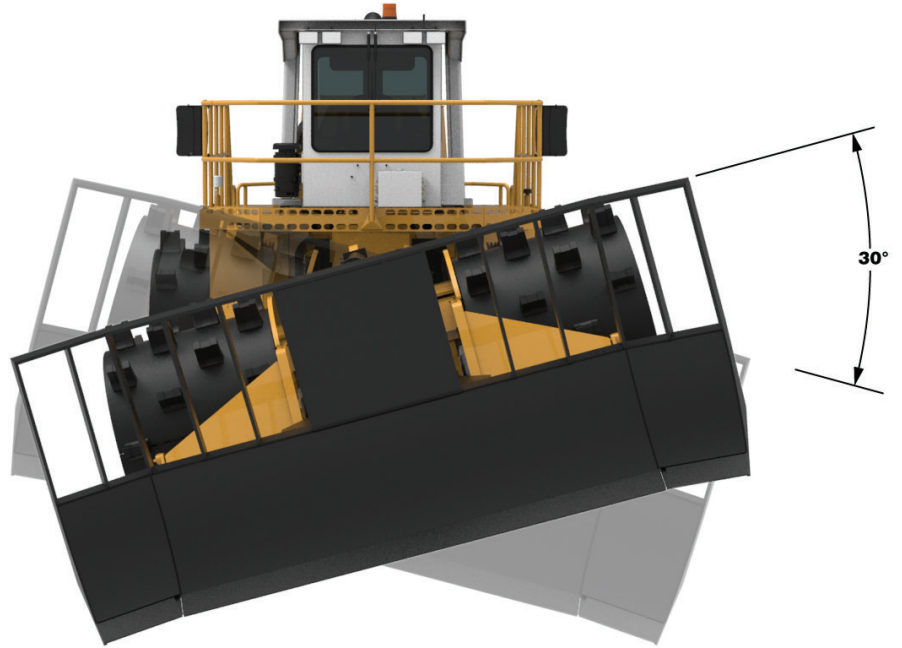
Striker Bars and Optional Wheel Cleaners in front of and behind each wheel stay in line during oscillation, minimize potential of debris wrapping around the wheels, and prevent debris from being thrown at the operator.

The Wagner Landfill Compactor...A Better Solution

Front Frame

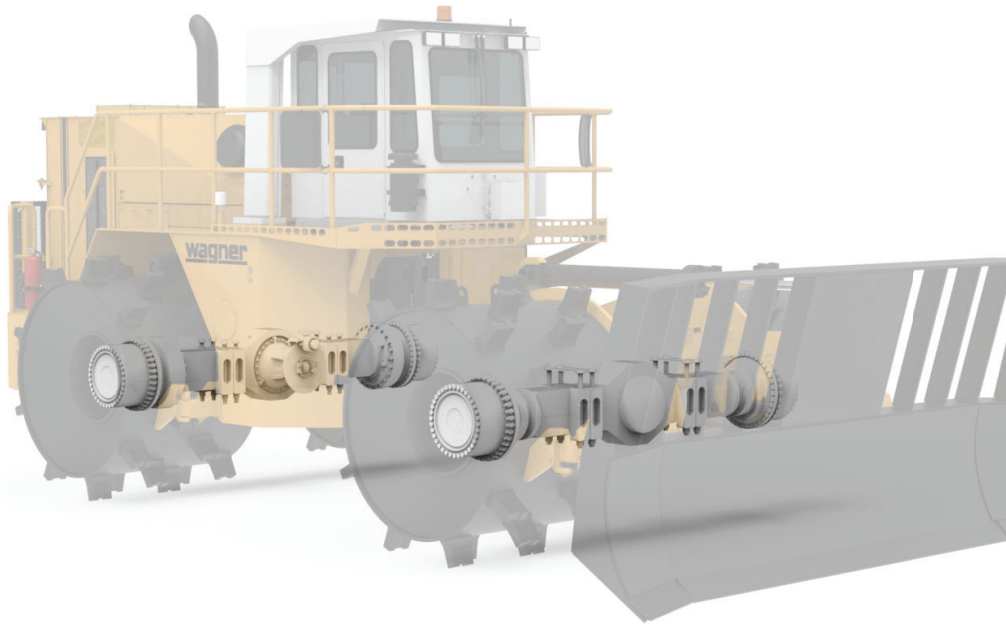
Oscillation

30 degree front frame oscillation keeps all four wheels on the pile, maximizing compaction, operator comfort, and safety.



Mechanical Drivetrain

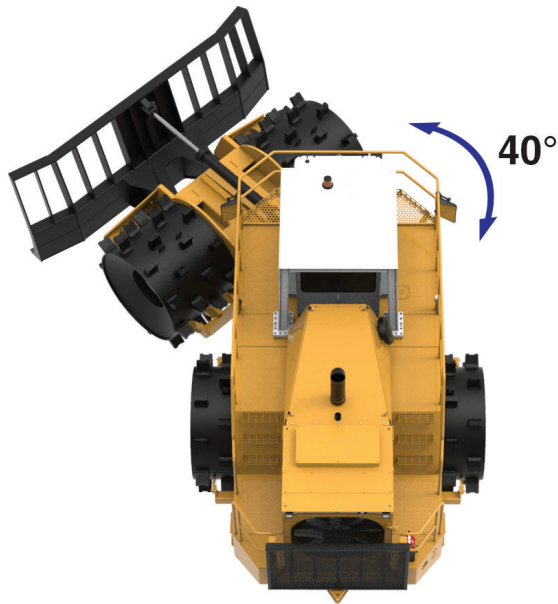
Heavy duty double planetary reduction axles reduce bending and contact stresses on gear teeth to significantly improve service life.



Wagner offers the only Landfill Compactor with both front frame oscillation and a mechanical drivetrain.

Extreme Durability

Wagner mobile equipment is always purpose built with components sized correctly for the application and features that help the machine last longer and cost less to own and operate.



40° Articulation

A robust chassis and swivel box design allow for the four wheel drive machine to articulate 40° in either direction, giving it a tight turn radius perfect for maneuvering around a landfill.

Ease of Maintenance

Routinely serviced items are easy to access, reducing maintenance time. Guard doors open easily for access to filters. Lubrication points are centralized at ground level. Cooler cores swing out for easy access on both sides.



Comfort, Safety, and Ease of Maintenance

Easy-swing doors provide access on both sides of the single-layer stacked coolers.

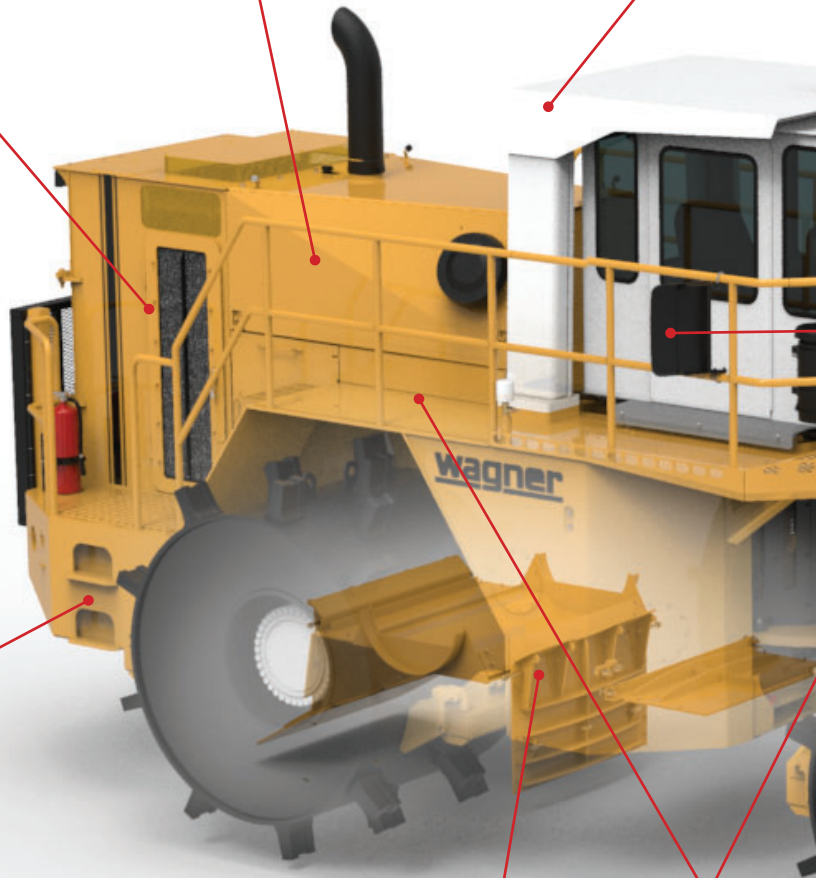


New cooling package allows airflow to keep engine from overheating and provides reverse airflow to blow out any debris that may be trapped.

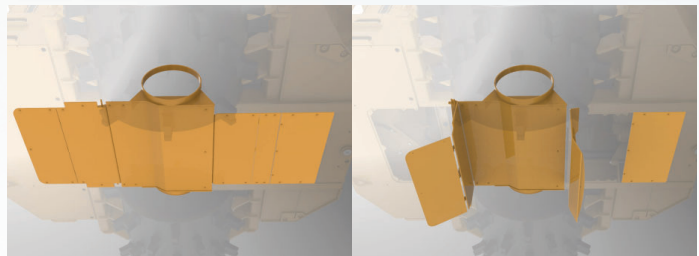
Optional Manual or Automatic Fire Suppression System is built into the machine to prevent damage and eliminate a potential walkway hazard.



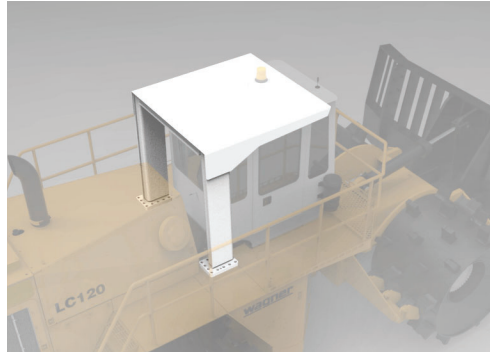
Engine compartment provides plenty of space around the engine for easy access, does not trap debris, and is protected by a hinged door.



Hydraulically-Actuated Belly Pans allow easy access for chassis cleaning and offer protection for the hydraulic cylinders.



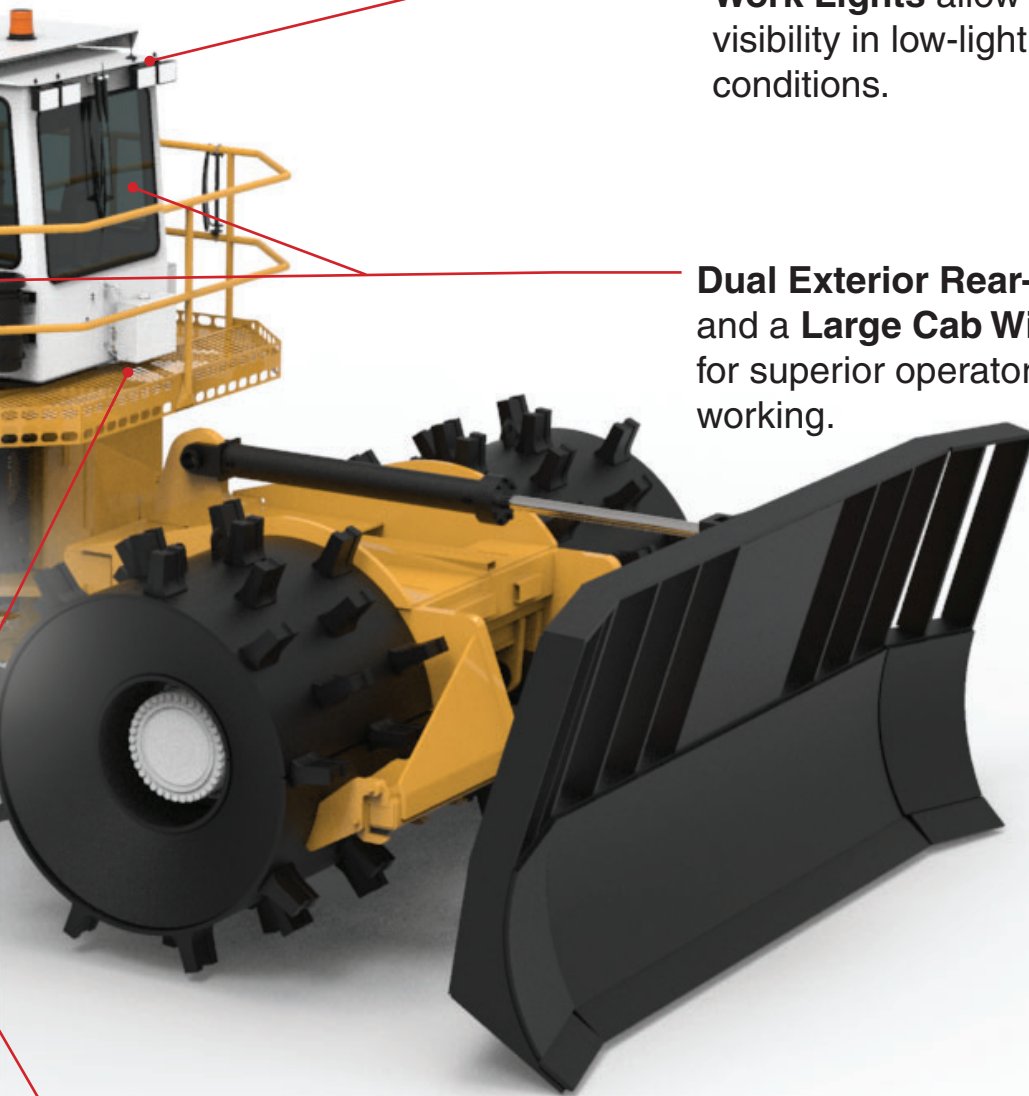
Independent Roll Over Protective Structure (ROPS) is proven to protect the operator in the case of an accident.



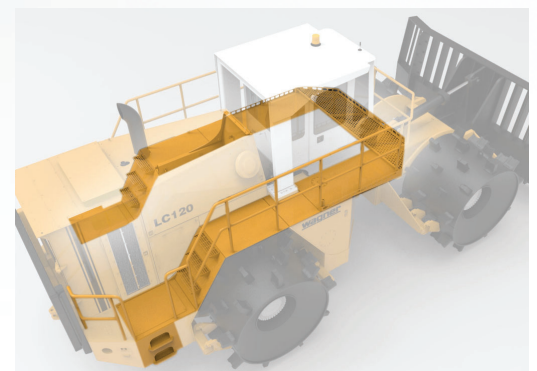
LED Front and Rear Work Lights allow for visibility in low-light conditions.



Dual Exterior Rear-View Mirrors and a **Large Cab Window** allow for superior operator visibility while working.



Stairway Access on both sides of the machine, a **Walk-Around Platform** in front of the cab, and doors on either side of the cab allow for safe ingress and egress on either side of the compactor.



Service and Support

Training

Receive training from Allied Wagner factory personnel, at the location of your choosing:

1. **Your Landfill** - Learn operator and maintenance best practices to make sure you are getting the best return on your investment.
2. **Your Dealer** - Allied Wagner trainers work with you and your dealer, at their facility, to make recommendations for service parts stocking and logistics, and provide up-to-date advanced systems training to ensure proper troubleshooting and maintenance practices.
3. **Allied Wagner Factory** - Receive detailed and hands-on systems training and troubleshooting instructions in the classroom and on the factory floor.



Parts Support

- The Allied Wagner Factory and our dealers stock critical components and common wear items to minimize downtime.
- Rebuild and component exchange programs are also available to further reduce lead times and cost.

Technical Support - There When You Need Us

- The Allied Wagner field service team stands ready to support you when assistance is required.
- With solutions engineered to minimize cost and return your machine to work in the shortest time possible, Allied Wagner is there when you need us, 24 hours/day, 365 days/year.



Standard Features and Options

Engine	Standard	Option
Cummins tier IV final diesel engine	X	
Caterpillar tier IV final diesel engine		X
Cold weather starting aid		X
Three stage air cleaner (pre-cleaner, primary and secondary filter)	X	
Indicator glass for coolant level	X	
Reversing cooling fan	X	
Engine block heater		X
Delayed shutdown		X
Remote Start Connector		X
High temp/low oil engine shutdown		X
Idle shutdown		X

Instruments	Standard	Option
Wagner Smart Screen, includes: Engine Coolant Temperature Engine Load Engine Oil Pressure Gauge Engine Push Start and Stop Button Fuel Efficiency Fuel Level Gauge Hydraulic Oil Temperature Gauge Implement Lock Low Brake Pressure Indicator Low Lube Indicator Manual/Automatic Shifting Parking Brake Button Regen Initiate / Postpone Speedometer Tachometer Throttle Transmission Direction and Gear Transmission Oil temperature and Pressure Gauge Voltmeter	X	
Start interlock when gear is engaged	X	
Remote Monitoring		X
Hour Meter	X	

Electrical System	Standard	Option
24V	X	
Alternator 24V / 100A	X	
Alternator 24V / 150A		X
Battery disconnect switch	X	
Electric horn	X	
LED Lights (4 Forward Mounted, 2 Rear Mounted)	X	
Warning beacon, strobe, amber		X
Reverse alarm	X	
High capacity batteries	X	

External Equipment	Standard	Option
Rubber isolated engine and transmission mounts	X	
Lifting eyes	X	
Tie-down eyes	X	

Protective Equipment	Standard	Option
Liquid-type fire suppression system (manual activation)		X
Liquid-type fire suppression system (auto-activation)		X

Service and Maintenance	Standard	Option
Centralized lubrication points, ground accessible	X	
Automatic lubrication system		X
Spindle nut wrench kit		X

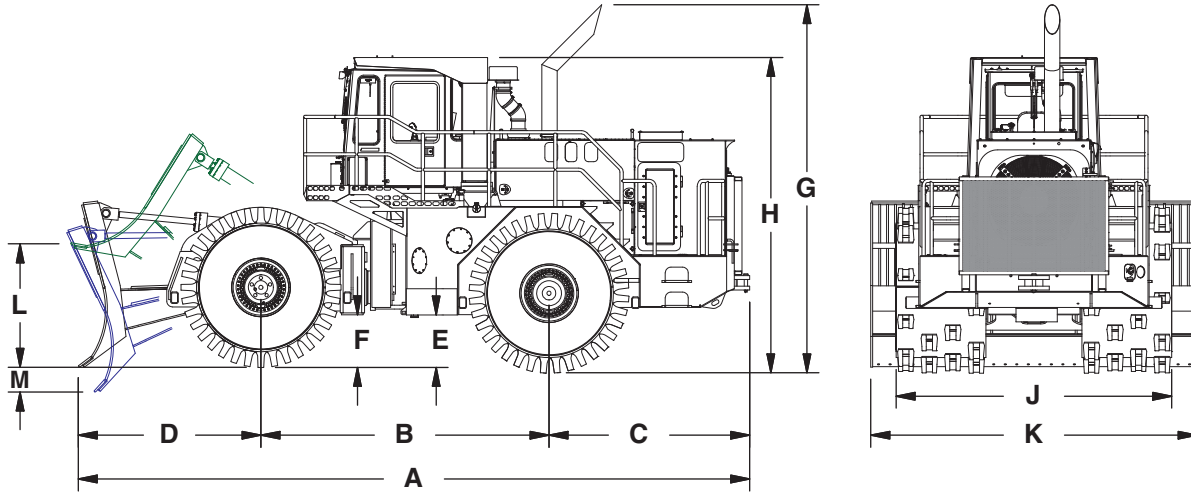
Drivetrain	Standard	Option
Decelerator pedal	X	
Force cooled wet-disc brakes on rear axle	X	
Four wheel drive	X	
Modulated selectable automatic power shift transmission, two gears, forward and reverse	X	
Parking brake, spring applied, hydraulically released	X	
Secondary emergency steering		X
Speed limiter		X
Transmission declutch	X	

Hydraulic System	Standard	Option
Implement Valve - Electric Joystick controlled	X	
Hydraulic pumps: Fan Drive/Hydraulic Oil Cooler Gear Pump Tandem Converter Charge/Brake Cooling Gear Pump Implement Piston Pump	X	
Double-acting hydraulic cylinders	X	
Hydraulic oil cooler	X	
Hydraulic tank heater		X
Hi-Pressure Filter		X
Blade Float		X
Low level hydraulic fluid warning	X	

Cab	Standard	Option
12V power outlet	X	
360 degree visibility	X	
Acoustic inner lining	X	
Cab AC/heating with fresh air inlet and defroster	X	
CB Radio		X
Coat Hanger	X	
Cupholder	X	
Dual exterior rear-view mirrors	X	
Elastomeric isolator cab mounts	X	
Ergonomic heavy-duty operator's seat with adjustable position and air suspension	X	
Filtered, pressurized fresh air inlet	X	
Floor mat	X	
ROPS	X	
Front-view camera, color		X
Interior lights	X	
Intermittent function for front and rear wipers	X	
Lockable doors	X	
Radio with MP3 player	X	
Rear-view camera including monitor, color		X
Retractable lap-type seatbelt (SAE J386)	X	
Seat-mounted adjustable operator control consoles	X	
Service platforms with slip protected surfaces	X	
Sliding windows		X
Steering wheel, adjustable		X
Steering, joystick	X	
Document pocket	X	
Sun blind, front window	X	
Sun blind, side/rear windows		X
Tinted safety glass	X	
Training seat w/retractable seat belt		X
Windshield washer front and rear	X	
Windshield wipers front and rear	X	

Wheel and Blade Options	Standard	Option
Wheel Cleaners		X
Steel Wheels		X
Semi-U Blade		X
Straight Blade		X

LC90



Dimensions

A. Length with Blade on Ground (straight blade).....	29' 2"
B. Wheelbase	12' 6"
C. Center Line of Rear Axle to Rear	8' 9"
D. Center Line of Front Axle to Front of Blade.....	7' 11"
E. Ground Clearance.....	2' 3"
F. Ground Clearance under Bogie	2' 3"
G. Height to Top of Exhaust Pipe.....	16' 0"
H. Height to ROPS/Canopy	13' 8"
J. Width over Wheels	12' 0"
K. Blade Width	14' 2"
L. Maximum Blade Height above Grade	5' 4"
M. Minimum Blade Height below Grade	13"

Wheels:

Drum Width.....	3' 11"
Drum Diameter	5' 7"
Diameter with Teeth	6' 11"
Cleats Per Wheel.....	36
Articulation Angle	40 Degrees Each Way
Oscillation	15 Degrees Each way

Specifications

Engine

Model.....	Cummins QSL9
Horsepower	430 HP @ 2,100 rpm
Max Torque	1,361 ft-lbs @ 1,500 rpm
Bore and Stroke.....	4.5" x 5.7"
No. of Cylinders	6
Displacement.....	543 Cu/In (8.9 liters)
Maximum Operating Slope	3:1

2 Speed Forward and Reverse Modulated

Automatic Transmission

1st	3.3 mph
2nd.....	6.0 mph

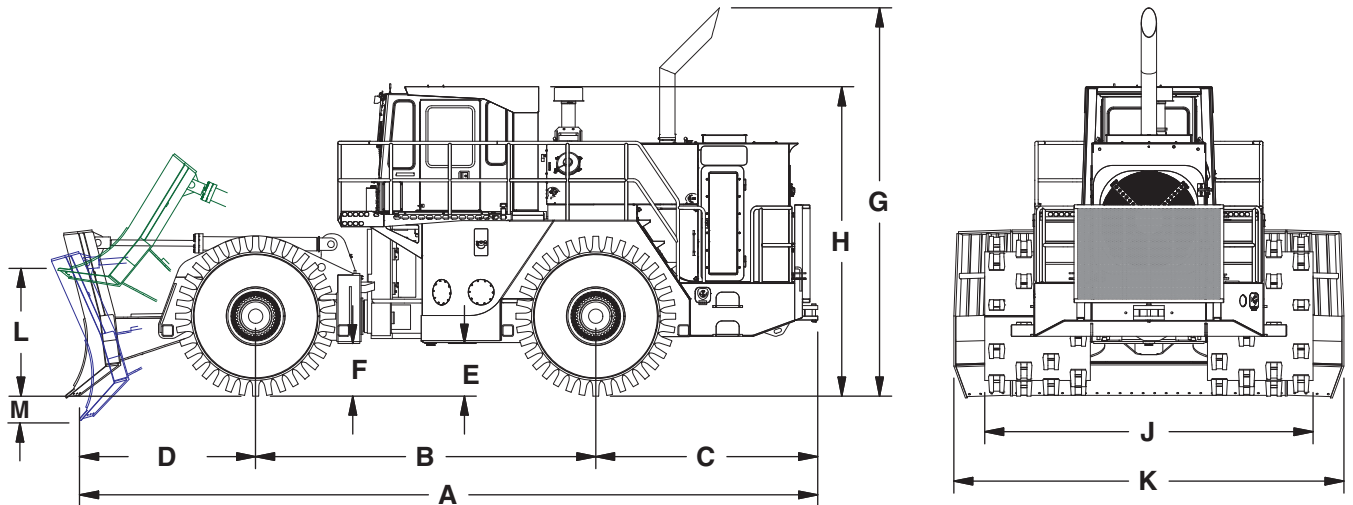
Capacities

Fuel Tank	190 gals
DEF Tank	25 gals
Hydraulic Oil	110 gals
Crankcases.....	12 gals
Cooling Systems.....	20 gals

Weight

Operating Weight.....	90,000 lb
-----------------------	-----------

LC120



Note: Shown with Semi-U Blade

Dimensions

A. Length with Blade on Ground (semi-U blade).....	32' 0"
Length with Blade on Ground (straight blade)	31' 3"
B. Wheelbase.....	14' 9"
C. Center Line of Rear Axle to Rear	9' 8"
D. Center Line of Front Axle to Front of Blade.....	7' 8"
E. Ground Clearance.....	2' 4"
F. Ground Clearance under Bogie	2' 3"
G. Height to Top of Exhaust Pipe.....	16' 10"
H. Height to ROPS/Canopy	13' 5"
J. Width over Wheels	14' 3"
K. Blade Width	16' 11"
L. Maximum Blade Height above Grade	5' 7"
M. Minimum Blade Height below Grade	13"

Wheels:

Drum Width.....	4' 7"
Drum Diameter	5' 7"
Diameter with Teeth	6' 11"
Cleats Per Wheel.....	36
Articulation Angle	40 Degrees Each Way
Oscillation	15 Degrees Each way

Specifications

Engine

Make and Model.....	Cummins QSX-15
Max Horsepower	535 @ 2,100 RPM
Max Torque	1,950 Ft/Lbs @ 1,400 RPM
Bore and Stroke.....	5.4" x 6.7"
No. of Cylinders	6
Displacement.....	915 Cu/In (15 liters)
Maximum Operating Slope	3:1

2 Speed Forward and Reverse Modulated

Automatic Transmission

1st	3.3 mph
2nd.....	6.0 mph

Capacities

Fuel Tank	200 gals
DEF Tank.....	15 gals
Hydraulic Oil	105 gals
Crankcase	12 gals
Cooling Systems.....	18 gals

Weight

Standard Operating Weight	120,000 lb
Optional Maximum Operating Weight.....	130,000 lb

For over 50 years, Wagner has been known for extremely durable material handling equipment, with many machines more than 30 years old still operating as front-line equipment. This durability comes from a history of “purpose built” equipment, allowing Wagner machines to perform the tasks they were designed to do at the highest level for longer periods of time without breaking down. The Wagner “purpose built” legacy is fully designed, manufactured, and tested in Sherwood Oregon, USA. The Wagner Landfill Compactor proudly joins a long line of industry leading mobile equipment including the Logstackers, Chip and Biomass Dozers, Heavy-Lift Steel Transporters, Steelworkers, and Coil Handlers.



wagner

A Division of Allied Systems Company

21433 S.W. Oregon St
Sherwood, OR 97140-9799
(503) 625-2560
(800) 285-7000
wagner@alliedsystems.com
www.alliedsystems.com/wagner

© Copyright Allied Systems Company, 2023
Printed in U.S.A.

Where general information, pictures and descriptions are provided, some illustrations and specifications may require options not shown in the picture or included in the description. Specifications are subject to change without notice or obligation. Please consult your dealer for details.

85-791 Rev: 04/2023