

Wagner

L460



Purpose-Built Log Handlers

 **MADE IN USA**

L460

Capacity

Tipping Capacity	@ 48" Load Center...70,000 lbs (31,750 kg)
Rated Capacity	@ 48" Load Center...60,000 lbs (27,216 kg)
Tipping Capacity	@ 60" Load Center...64,000 lbs (29,029 kg)
Rated Capacity	@ 60" Load Center...55,000 lbs (24,947 kg)

Engine (Tier 4 Final)

Make and Model	Cummins QSG12
Max Horsepower	400 HP
<u>Optional:</u>	
Make and Model	Caterpillar C13
Max Horsepower	440 HP

Service Refill Capacities

Fuel Tank	180 Gal (681 liters)*
Hydraulic Oil	240 Gal (908 liters)*
Engine w/Filter	10 Gal (38 liters)*
Cooling System	13 Gal (49 liters)*

* Approximate

Drivetrain

Front Axle	Double Planetary Reduction
Rear Axle	Double Planetary Reduction
Integral Transmission/Converter w/Automatic Shifting	4 Speeds Fwd/Rev

Tires

Single Drive Tires	Standard	Dual Drive Tires	Option
Front	(2) 35/65 x 33	Front	(4) 18.00 x 33
Rear	(2) 23.5 x 25	Rear	(2) 23.5 x 25
Biased Ply Tire Construction	Standard		
Radial Tire Construction	Optional		

Cab

Best in class working environment includes the following:

Noise (dBa) Inside Cab (ISO 6396:2008)	72 dB
Visibility	360°
Convex Front Windshield	Standard
Falling Objects Protection (F.O.P.) Certification	Standard
Dual Heat/AC	Standard
Air Seat Suspension for Operator Comfort	Standard
Cab Isolation from Chassis (Noise/Vibration Reduction)	Standard
Rotating Platform, 90°	Optional
Sliding Windows	Optional
Load Dampening	Optional
Joystick Steering	Optional

Features & Options

Wet Disc Brakes	Standard
Remote Engine Oil Drain	Standard
Dual Lighted Stairway Access	Standard
Central Lube	Standard
Sight Gauges	Standard
Ground Level Service Bay	Standard
LED Lights (Two Forward Cab Mounted, Two Forward Carriage Mounted, 2 Rear Cab Mounted)	Standard
ANSUL Fire Suppression (Liquid)	Optional
Tilt Cab	Optional
Front and Rear Cameras	Optional
Warning Beacon	Optional
Converter Lockup	Optional

Cycle Times†:

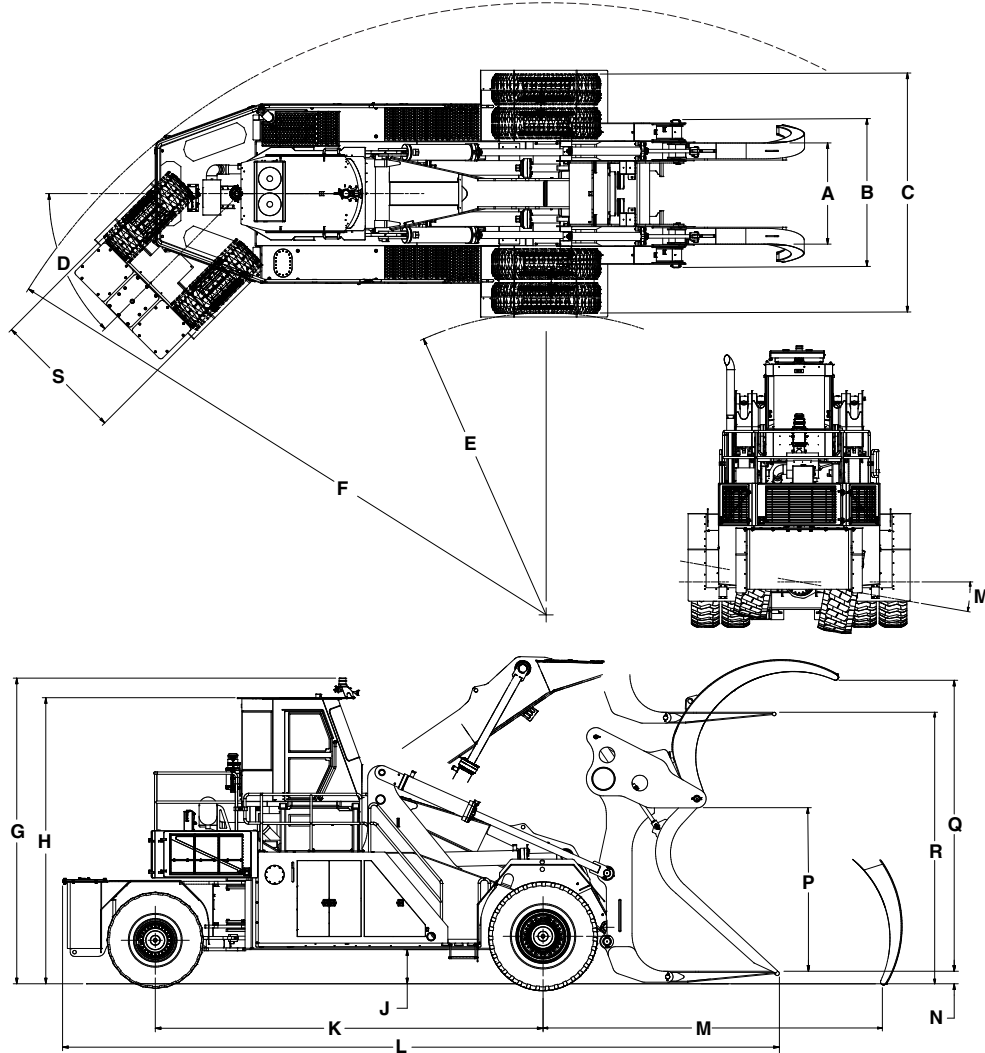
Raise	11.0 Seconds
Kickoff	3.0 Seconds
Lower, Empty	9.0 Seconds
Total Cycle Time	23.0 Seconds

Speed (Unladen)

1	3.5 mph (5.6 km/h)
2	7.3 mph (11.7 km/h)
3	12.2 mph (19.6 km/h)
4	22 mph (35.4 km/h)

† Calculated at 50% of static tipping load

L460



Dimensions*

A. Width Outside of Tines.....	7' 7" (2,311 mm)
B. Carriage Width.....	8' 8" (2,642 mm)
C. Width.....	12' 5" (3,785 mm)
D. Width (Dual Tires).....	14' 0" (4,267 mm)
E. Bogie Steering Angle.....	45°
F. Inside Turning Radius.....	17' 0" (5,182 mm)
G. Inside Turning Radius (Dual Tires).....	17' 8" (5,385 mm)
H. Swing Radius.....	35' 10" (10,922 mm)
I. Cab Height (highest point).....	17' 11" (5,461 mm)
J. Cab Height.....	16' 10" (5,131 mm)
K. Ground Clearance.....	2' 0" (610 mm)
L. Wheelbase.....	22' 8" (6,909 mm)
M. Length.....	41' 11" (12,776 mm)
N. Distance from Axle to Holddown Tip.....	23' 3" (7,087 mm)
O. Ground to Front Tip of Tine.....	9" (229 mm)
P. Carriage Open Height.....	9' 7" (2,921 mm)
Q. Hold Down Open Height.....	17' 1" (5,207 mm)
R. Lift Height.....	15' 11" (4,851 mm)
S. Lift Height (High Lift).....	20' 2" (6,147 mm)
T. Width Outside of Bogie Tires.....	7' 9" (2,362 mm)
U. Oscillation Angle.....	10°

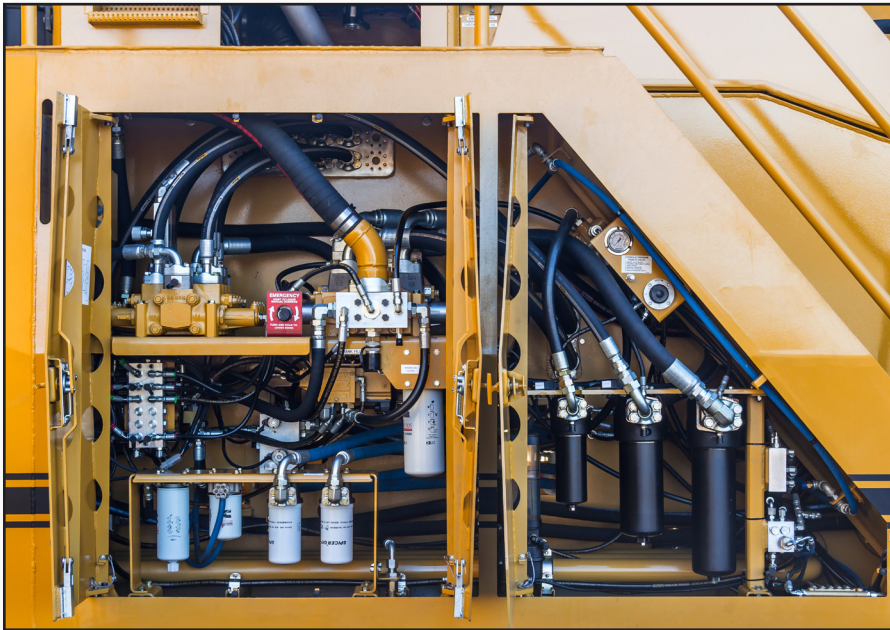
Weights*

Unit Weight (Empty).....	132,000 lbs (59,874 kg)
Unit Weight (Loaded).....	202,000 lbs (91,626 kg)

Carriage Tilt Angles:

Forward Tilt @ Ground Level.....	54°
Forward Tilt @ Max Height.....	18°
Backward Tilt @ Ground Level.....	10°
Backward Tilt @ Max Height.....	61°

* Approximate



wagner

A Division of Allied Systems Company

21433 S.W. Oregon Street
Sherwood, Oregon 97140 USA
Telephone: 503.625.2560 • Fax: 503.625.7980
E-mail: wagner@alliedsystems.com
www.alliedsystems.com