



A Division of Allied Systems Company

HLT-280 Heavy Lift Transporter



Engine

Make and Model Cummins QSX-15 Tier 4 Final
 Max Horsepower 450 @ 2100 RPM
 Max Torque 1550 Ft/Lbs @ 1400 RPM
 No. of Cylinders 6
 Displacement 915 Cu/In (15 liters)
 Optional Scania 13 Liter 450 HP Tier 4 w/o DPF

Air Cleaner

Two-stage Dry Type

Transmission

Four Speed Power Shift, Modulated, Selectable Automatic w/Torque Converter

Forward/Reverse

Range	Ratio	Speed (Unloaded)
1.....	4.07:1	3.0 mph (4.8 km/h)
2.....	2.26:1	6.0 mph (9.7 km/h)
3.....	1.29:1	11.0 mph (17.7 km/h)
4.....	0.71:1	18.0 mph (29.0 km/h)

Range	Ratio	Speed (Loaded)
1.....	4.07:1	3.0 mph (4.8 km/h)
2.....	2.26:1	5.0 mph (8.0 km/h)
3.....	1.29:1	9.0 mph (14.5 km/h)
4.....	0.71:1	10.0 mph (16.1 km/h)

Axles, Drive Tandem

Make Kessler
 Type Planetary
 Brakes Wet Disc

Axle, Steer (6 Axle Lines)

Make and Model Fabricated Allied
 Brakes (2 Axle Lines) Wet Disc

Tires

(32) Trelleborg T900 12.00 x 24

Electrical System

Type 24 Volt Start/Run
 Alternator 105 AMP
 Batteries (2) 12 Volt-8D @ 205 AMP Hr. each

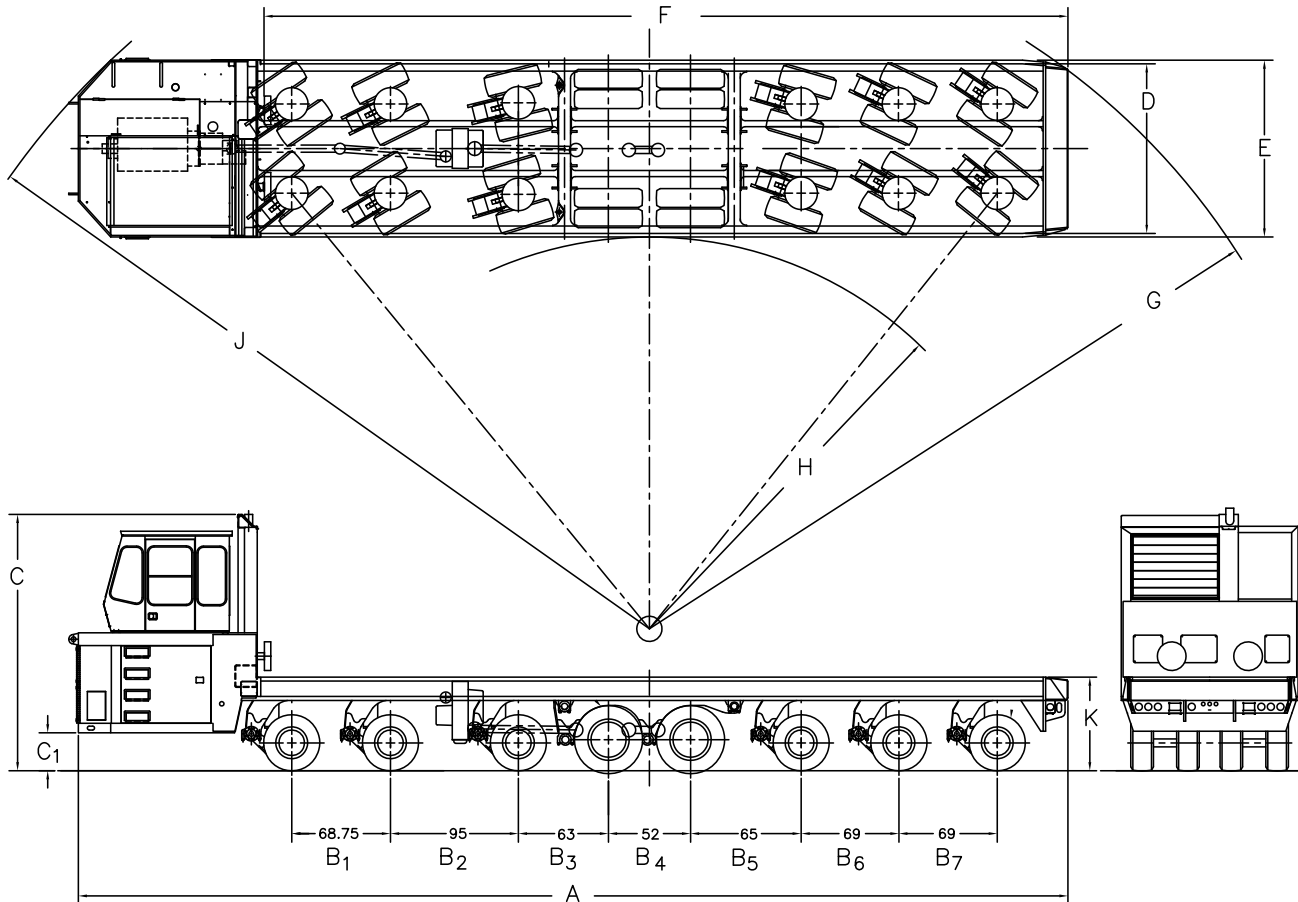
Service Refill Capacities

Fuel Tank 100 Gals (302 liters)
 Hydraulic Oil 106 Gals (401 liters)
 Crankcase (Refill) 11 Gals (42 liters)
 Cooling System 14.5 Gals (55 liters)

Cylinders

Lift: 7.5" Diameter x 11.75" Stroke Qty. 16
 Steer: 4.0" Diameter x 10.00" Stroke Qty. 4

HLT-280



Dimensions (approximate)

A. Overall Length	52'-2" (15,900mm)	F. Length of Bed	46'-10" (14,275mm)
B. Wheelbase	See Above (B ₁ thru B ₇)	G. Tuning Radius - Tail Swing	34'-9" (10,592mm)
C. Overall Height - Max.....	13'-6" (4,115mm)	H. Turning Radius - Inside	15'-6" (4,724mm)
Overall Height - Lowered.....	11'-10" (3,607mm)	J. Turning Radius - Cab	41' (12,497mm)
C ₁ . Cab - Min Under.....	10" (254mm)	K. Height to Bed - Max.....	7'-6" (2,286mm)
D. Outside Width - Top Flange.....	9'-8" (2,946mm)	Height to Bed - Lowered.....	5'-10" (1,778mm)
E. Outside Width - Bottom Flange	11' (3,353mm)	Height to Bed - Travel.....	6'-8" (2,032mm)

Weights and Functions (approximate)

Gross Vehicle Weight	690,000 lbs (312,979 kg)	Payload Capacity Including Pallet	560,000 lbs (254,012 kg)
Tare Weight	130,000 lbs (58,967 kg)	Axle Line Loaded.....	86,250 lbs (39,122 kg)
Pallet.....	60,000 lbs (27,216 kg)	Tire Loading / Tire.....	21,562 lbs (9,780 kg)

Optional Equipment: Standard and special options are available. Contact Allied Systems Company for details.

wagner

A Division of Allied Systems Company

21433 S.W. Oregon Street
 Sherwood, Oregon 97140 USA
 Telephone: 503.625.2560 • Fax: 503.625.7980
 E-mail: wagner@alliedsystems.com

www.alliedsystems.com