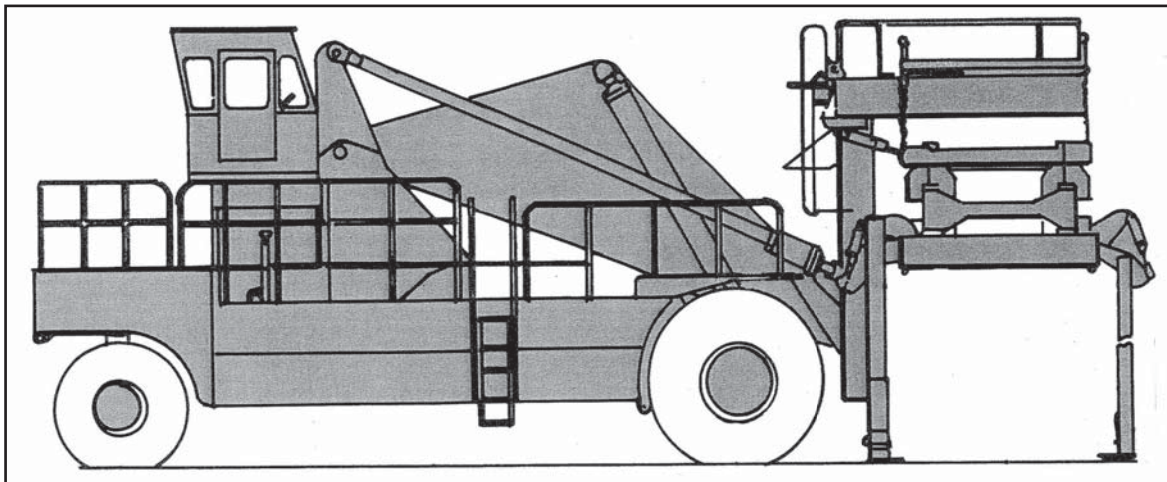


# Wagner

A Division of Allied Systems Company

# WCH-90 Container Handler



## Engine

Make and Model ..... Cummins L T10-C250  
 Max Horsepower ..... 250 @ 2100 RPM  
 Max Torque ..... 750 Ft/Lbs @ 1300 RPM  
 Bore and Stroke ..... 4.92" x 5.35" (125 mm x 136 mm)  
 No. of Cylinders ..... 6  
 Displacement ..... 611 Cu/In (10.0125 liters)  
 Optional Engine ..... CAT C12

## Air Cleaner

Donaldson Two Stage Dry Type

## Electrical System

Type ..... 24 Volt Neg. Ground  
 Alternator ..... 105 AMP  
 Circuit Breakers (lights) ..... 35 AMP  
 Circuit Breakers (accessory) ..... 35 AMP  
 Batteries (2) ..... 12 Volt-8D @ 205 AMP Hr. each

## Torque Converter

Clark 8000 Series

## Transmission

Clark Power Shift, Spur Gear: 4 speeds forward and reverse.

Range (Forward)	Speed
1.....	3.5 mph ..... 5.6 km/h
2.....	6.3 mph ..... 10.1 km/h
3.....	13.8 mph ..... 22.2 km/h
4.....	14.0 mph ..... 22.4 km/h

## Axles

Make ..... Clark  
 Model ..... FD-85001  
 Type ..... Planetary  
 Carrier Ratio ..... 6.333:1  
 Brakes ..... Hydraulic Disc  
 Brake Size ..... 1" x 32" Dia ..... (25mm x 812mm)

## Tires

Size (Driver) ..... 33.5 x 33-44PR  
 Size (Tail) ..... 23.5 x 25-Radial

## Hydraulic System

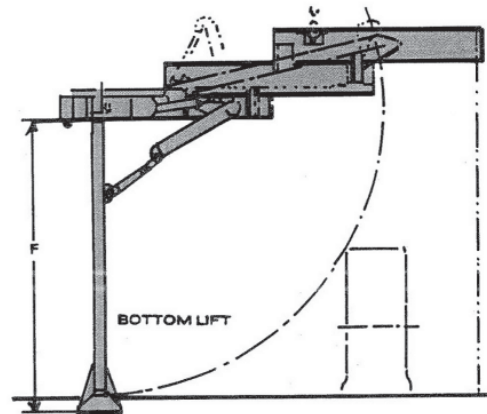
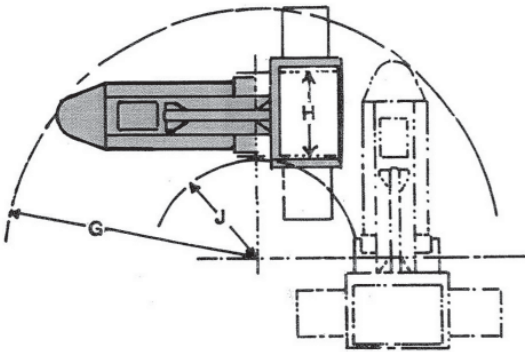
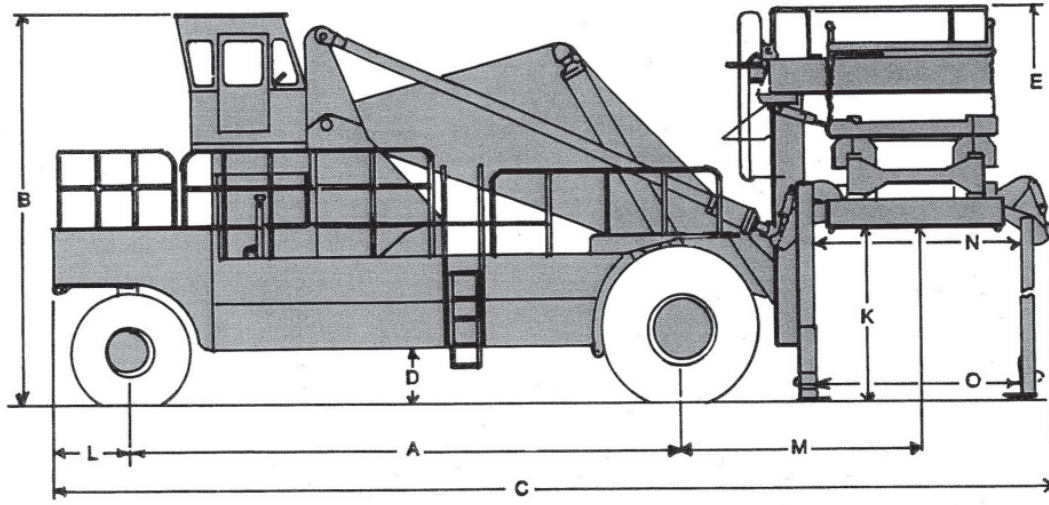
Power beyond type giving total capacity of all pumps in the system for multiple use simultaneously. Function controls are by effortless electric over hydraulic.

Steering Cylinder (2).....	4" x 20" ..... (102mm x 508mm)
Hoist Cylinder (2).....	10" x 123" ..... (254mm x 3130mm)
Tilt Cylinder (2).....	10" x 8" ..... (254mm x 203mm)
Side Shift.....	5" x 24" ..... (127mm x 609mm)
Extension Cylinder (1).....	4" x 12" ..... (101mm x 304mm)
Pile Slope.....	5" x 7" ..... (127mm x 181mm)
Spreader Extension (2).....	3" x 62" ..... (89mm x 1581mm)
Clamp Front (2).....	3" x 4" ..... (89mm x 101 mm)
Clamp Rear (2).....	3" x 5" ..... (89mm x 130mm)
Shoe Lift Rear (2).....	3" x 68" ..... (89mm x 1740mm)
Arm Rotate.....	4" x 15" ..... (101mm x 381mm)
Arm Rotate.....	4" x 14" ..... (101mm x 368mm)

## Service Refill Capacities

Fuel Tank.....	450 Gals ..... (1703 Liters)
Hydraulic Oil.....	280 Gals ..... (1060 Liters)
Crankcase w/Filter.....	11 Gals ..... (41 Liters)
Cooling System.....	18 Gals ..... (68 Liters)

# WCH-90



## Dimensions (approximate)

A. Wheelbase .....	25' 0" (7620mm)
B. Height with Cab .....	17' 6" (5,334mm)
C. Overall length .....	45' 10" (13970mm)
D. Ground Clearance .....	2' 6" (762mm)
E. Min. Carriage Height .....	17' 0" (5,182mm)
Max. Carriage Height .....	39' 0" (11,887mm)
F. Min. Ground to Top of Container .....	7' 8" (2,337mm)
Max. Ground to Top of Container .....	29' 2" (8,990mm)
G. Turning Radius Tail Swing .....	32' 11" (10,050mm)
H. Width outside Drive Tires .....	15' 4" (4,674mm)
J. Inside Turning Radius .....	6' 11" (2,130mm)
K. lift Shoe to bottom of Spreader .....	13' 0" (3,962mm)
L. Tail Overhang .....	13' 0" (3,962mm)
M. Axle Centerline to load Center:	
Boom Up .....	9' 0" (2,743mm)
Boom Level .....	12' 10" (3,912mm)
Boom Down .....	10' 10" (3,302mm)
N. Minimum Opening - Top .....	9' 7" (2,921mm)
O. Minimum Opening - Bottom .....	7' 10" (2,388mm)

## Weights and Functions (approximate)

Unit Weight .....	176,500 lbs (80,060kg)
Drive Axle .....	120,000 lbs (54,431kg)
Tail Axle .....	56,000 lbs (25,401kg)
Rated Capacity .....	90,000 lbs (40,825kg)
Forward tilt .....	5°
Backward tilt .....	5°
Side Shift .....	24" (610mm)
Extension .....	12" (305mm)
Minimum Arm Spacing .....	16' 4" (4,998 mm)
Maximum Arm Spacing .....	36' 4" (1,074mm)
Lift Shoe Size for bottom pick .....	6" x 30" (152 x 645mm)
Max. Height from ground to Lift Shoes .....	16' 8" (5,080mm)

# wagner

A Division of Allied Systems Company

21433 S.W. Oregon Street  
 Sherwood, Oregon 97140 USA  
 Telephone: 503.625.2560 • Fax: 503.625.7980  
 E-mail: [wagner@alliedsystems.com](mailto:wagner@alliedsystems.com)

[www.alliedsystems.com](http://www.alliedsystems.com)