

wagner

A Division of Allied Systems Company

SW100 STEELWORKER



Engine

Make and Model Cummins Electronic QSX15
 Max Horsepower 360 @ 2100 RPM
 Max Torque 1215 Ft/Lbs @ 1400 RPM
 Bore and Stroke 5.5" x 6"
 No. of Cylinders 6
 Displacement 915 Cu/In (15.0 liters)

Air Cleaner

Donaldson Two Stage Dry Type

Electrical System

Type 24 Volt Neg. Ground/24 Volt Start
 Alternator 100 AMP
 Circuit Breakers (lights) 30 AMP
 Circuit Breakers (accessory) 20 AMP
 Batteries (2) 12 Volt-8D @ 205 AMP Hr. each

Torque Converter

Clark 8000 Series Single Stage, 3 Elements

Transmission

Clark 6000 Series Power Shift - Spur Gear; 4 Speeds Fwd & Rev.

Range	Ratio	Speed (Unladen)
1.....	4.09:1	4.9 mph (7.8 km/h)
2.....	2.27:1	8.5 mph (13.6 km/h)
3.....	1.29:1	14.2 mph (22.8 km/h)
4.....	0.72:1	Blocked

Axles

Fabricated Housing Allied Wagner
 Make Clark
 Model FD-85501 Series
 Type Planetary
 Brakes Air over Hydraulic Disc
 Brake Size 32" Diameter (813mm)

Tires

Size (Driver) 37.5 x 33-42PR
 Size (Tail) 26.5 x 25-20PR

Hydraulic System

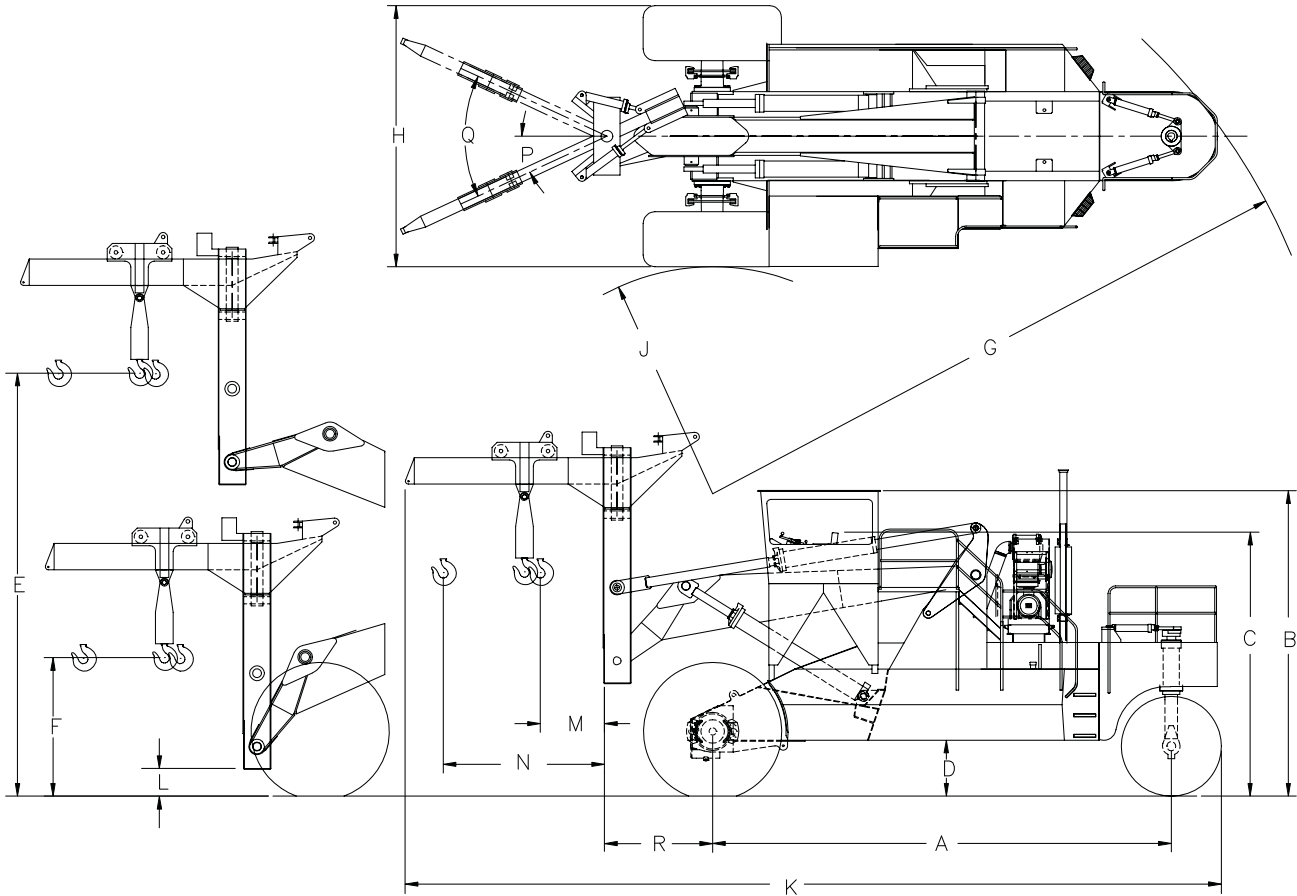
"Power Beyond" hydraulics with total capacity of all pumps in the system for multiple use simultaneously. Function controls are air over hydraulic or optional hydraulic over hydraulic.

Steering Cylinder (2) 4" x 20" (102mm x 508mm)
 Hoist Cylinder (2) 10" x 86.6" (254mm x 2200mm)
 Tilt Cylinder (2) 10" x 44" (254mm x 1118mm)
 Extension Cylinder (1) 6" x 66" (152mm x 1676mm)
 Swing Cylinder (2) 6" x 16" (152mm x 406mm)

Service Refill Capacities

Fuel Tank 450 Gals (1703 liters)
 Hydraulic Oil 334 Gals (1264 liters)
 Crankcase w/Filter 11 Gals (42 liters)
 Cooling System 22.5 Gals (85 liters)

SW100



Dimensions (approximate)

A. Wheelbase	26' 0" (7925mm)
B. Height to Top of Cab.....	17' 4" (5283mm)
C. Height without Cab	15' 2" (4623mm)
D. Ground Clearance Chassis	2' 10" (800mm)
E. Max Height under Hook.....	24' 0" (7315mm)
F. Min Height Under Hook	7' 10" (2388mm)
G. Turning Radius Tail Swing	35' 6" (10,820mm)
H. Width Outside Chassis Tires	14' 10" (4419mm)
J. Inside Turning Radius.....	13' 9" (4191mm)
K. Overall Length (Incl. Magnet Boom).....	45' 0" (13,716mm)
L. Min Height Under Carriage.....	0' 7" (178mm)
M. Carriage Face to CL of Magnet Min	3' 8" (1118mm)
N. Carriage Face to CL of Magnet Max	9' 2" (2794mm)

P. Boom Swing Each Way	25°
Q. Boom Swing Total	50°
R. Drive Axle CL to Carriage Face (down)	4' 4" (1321mm)
Drive Axle CL to Carriage Face (level)	6' 9" (2057mm)
Drive Axle CL to Carriage Face (up).....	5' 9" (1753mm)

Weights and Functions (approximate)

Unit Weight (with magnet)	160,950 lbs (73,007 kg)
Drive End.....	101,450 lbs (46,018 kg)
Tail End.....	59,500 lbs (26,990 kg)
Rated Lift Capacity 54"LC	100,000 lbs (45,360 kg)

Magnet (Optional Customer Supply)

Diameter - up to	72"
Capacity - up to	100,000 lbs (45,360 kg)
Temperature Range.....	500° to 1000°
Includes:	Magnet Controller
Generator:	33 KW, 240 Volts D.C. with 70 HP Diesel Engine



A Division of Allied Systems Company

21433 S.W. Oregon Street

Sherwood, Oregon 97140 USA

Telephone: 503.625.2560 • Fax: 503.625.7980

E-mail: wagner@alliedsystems.com

www.alliedsystems.com