

Service Instructions

MICO 466 Series Single Power Brake Valve

Disassembly

NOTE: HOUSING (5) AND THE SPOOL (4) ARE MANUFACTURED AS A MATCHED SET. THIS SET (HOUSING & SPOOL) SHOULD NOT BE INTERMIXED WITH OTHER PARTS.

1. Remove boot (14) from piston (13) and housing (5). Not all models use boot (14).
2. Remove piston (13), springs (12, 11 & 10), shim(s) (9) and retainer assembly (8) from housing (5). Not all models use spring (10). **NOTE: Be aware of the number of shim(s) being removed from housing.**
3. Carefully remove cup (7) and seal (6) from housing (5) bore. **NOTE: Care must be taken so as not to scratch or mar housing bore.**
4. Remove end plug (1), retainer (15), and spring (3) from housing (5). Remove O-Ring (2) from end plug (1).
5. Carefully remove spool (4) from end plug (1) end of housing (5). **NOTE: Care must be taken so as not to damage spool or housing bore.**

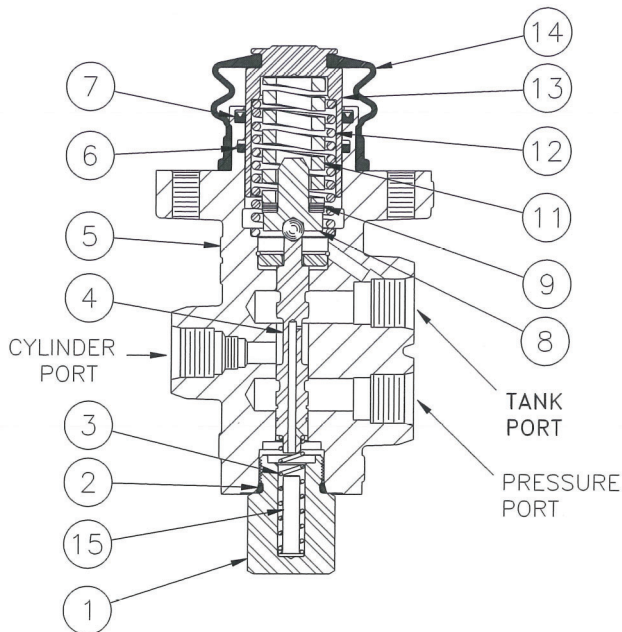


Figure 1

Assembly

NOTE: LUBRICATE ALL RUBBER COMPONENTS FROM REPAIR KIT WITH CLEAN TYPE FLUID USED IN THE SYSTEM.

1. Clean all parts thoroughly before assembling.
2. Lubricate spool (4) with clean system fluid and carefully slide into plug (1) end of housing (5) bore. Note direction of spool (4). **NOTE: Spool must slide freely into bore. If either part is damaged, a new spool/housing assembly may be required.**
3. Install new O-Ring (2) on end plug (1).
4. Install spring (3), retainer (15), and end plug (1) into housing (5). Torque 47.5-54.2 N-m (35-40 lb-ft).

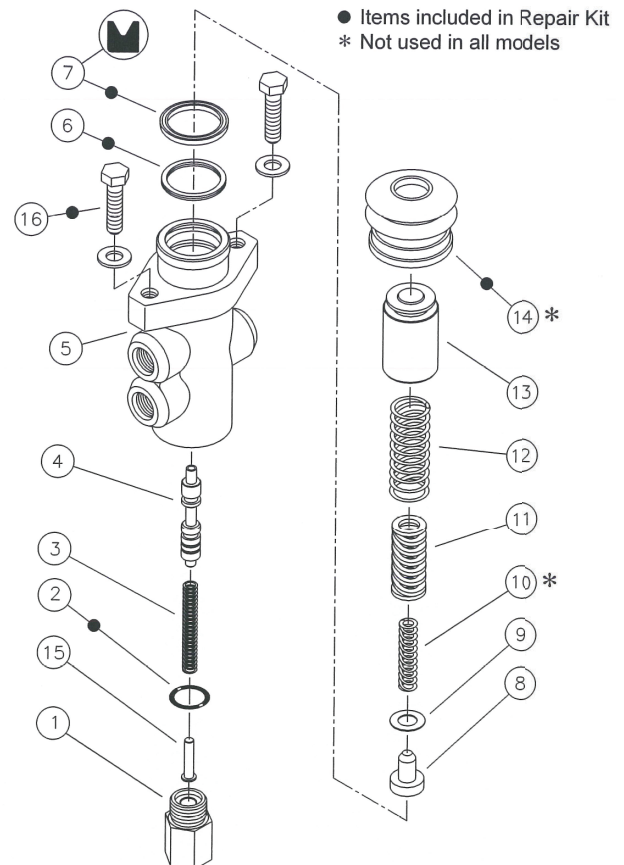


Figure 2

-
5. Carefully install new cup (7) and new seal (6) into housing (5) bore. Note direction and order of cup and seal. **NOTE: Care must be taken so as not to scratch or mar housing bore.**
 6. Install springs (10, 11 & 12), shim(s) (9) and retainer assembly (8) in piston (13). Not all models use spring (10). Be sure to install the same number of shim(s) as were removed.
 7. Carefully install piston (13) assembly into housing (5) bore.
 8. Install new boot (14) on housing (5) and piston (13).

9. When reinstalling pedal actuated valve, use new hex capscrews (16), 5/16-18 grade 8. Torque capscrews 24.4-29.8 N-m (18-22 lb-ft). **NOTE: Not all repair kits include capscrews (16).**

NOTE: AFTER SERVICE, THE VALVE MUST DEVELOP THE PRESSURE SHOWN IN TABLE 1. SHIM(S) (9) ARE USED TO OBTAIN THE CORRECT PRESSURE SETTING.

Brake Valve Assembly	Pressure
242680	2300 ± 75
600476	1700 ± 50
601625	2000 ± 50
604960	2000 ± 75
605411	2000 ± 100

Table 1