



21433 SW Oregon Street
Sherwood, Oregon 97140 U S A
Tel (503) 625-2560 • Fax (503) 625-5132

PARTS MARKETING BULLETIN

DATE: November 29, 2005

BULLETIN NO. _____ PMB0502

PAGE: 1 of 1

MODEL(S): _____ All Cranes

ATTENTION: ENGINEERING OFFICERS

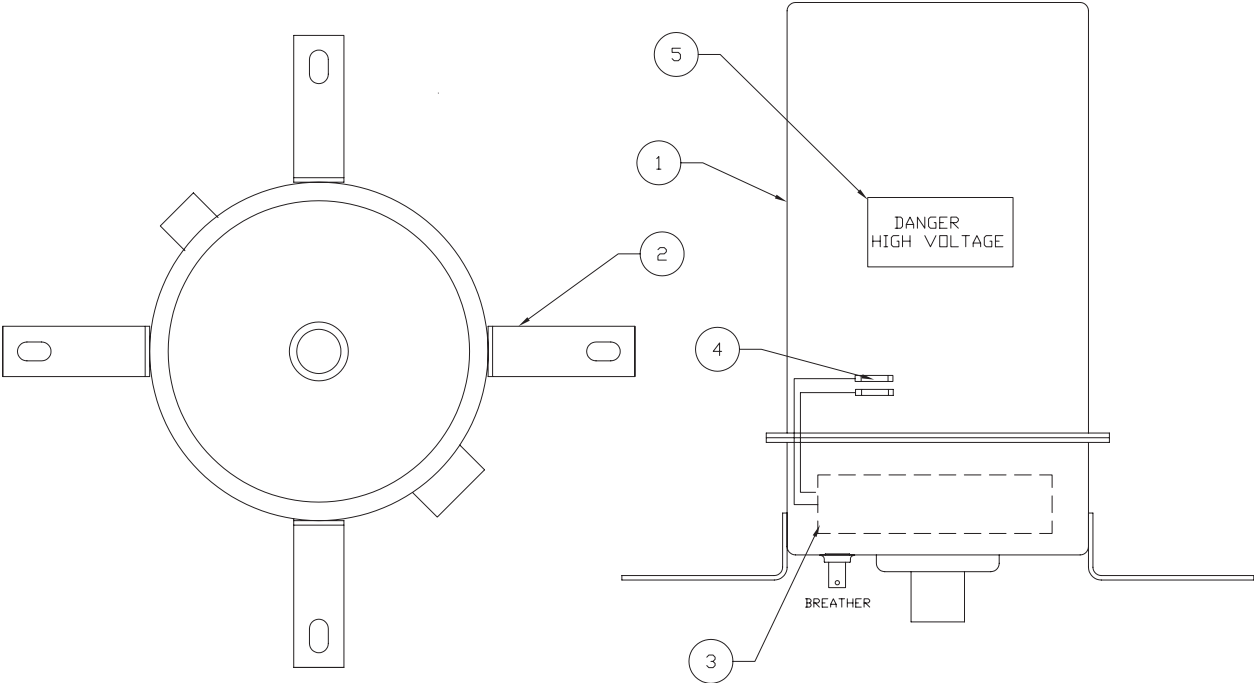
SUBJECT: REPLACEMENT ELECTRIC SWIVEL

The original Electric Swivel (P/N 48880) is no longer available and has been replaced by P/N 56510. The replacement swivel is interchangeable **as an assembly ONLY**.

Because of internal differences between the two part numbers, you **MUST** replace your existing parts coverage to assure there will not be a delay in receiving correct internal swivel components in the future.

Please replace the existing parts coverage with the attached coverage of 56510 upon receipt of this bulletin.

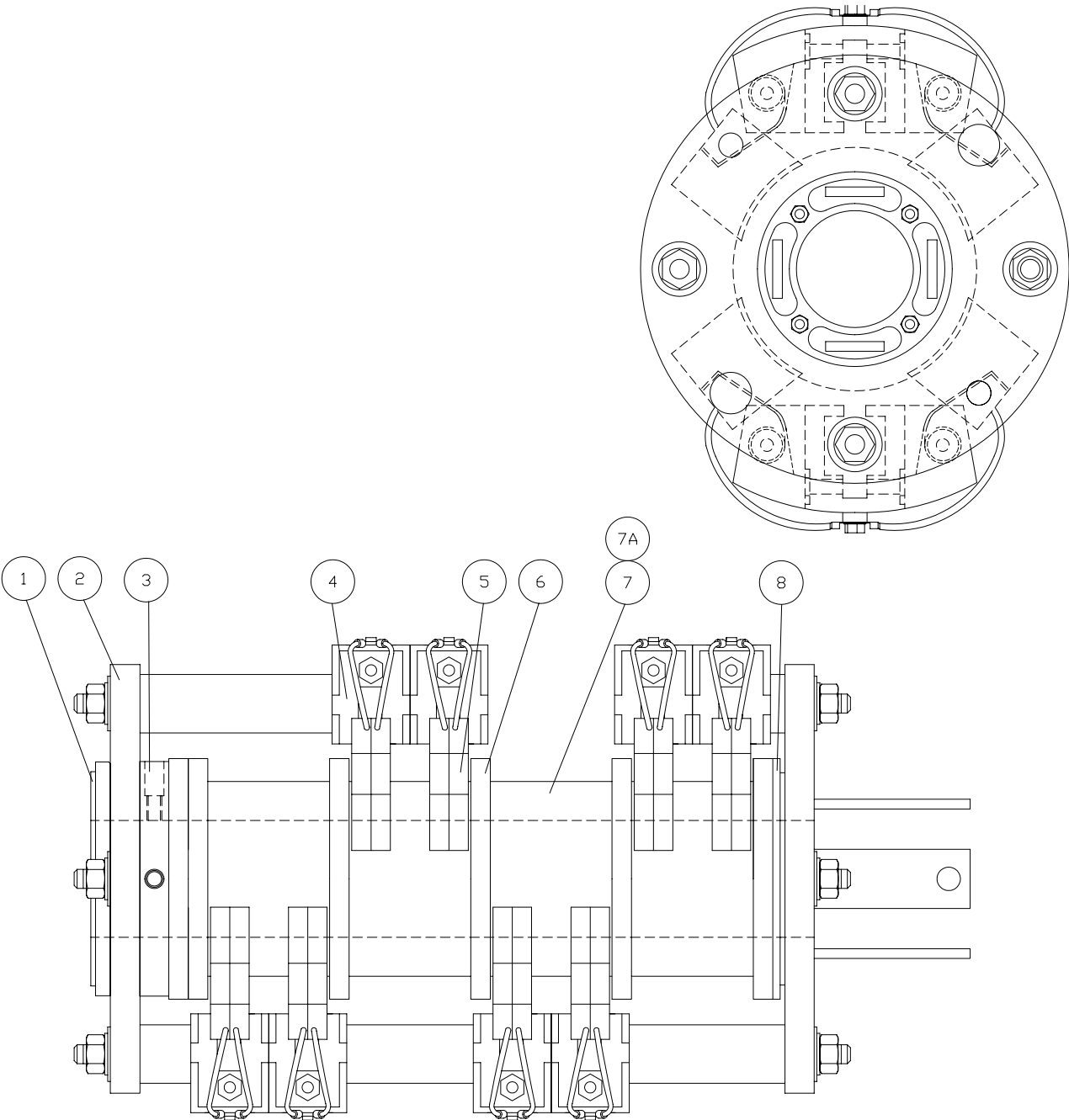
Electric Swivel Assembly



Item	Part No.	Qty	Description	Item	Part No.	Qty	Description
	56510		Electric Swivel Assembly				
1	* 252901	1	. Swivel, Electric	4	237294	2	. Splice, Butt
2	56518	4	. Bracket	5	20155	1	. Decal
3	234844	1	. Heater Strip, 25W				

* See Separate Coverage

Electric Swivel



Item	Part No.	Qty	Description	Item	Part No.	Qty	Description
	252901		Electric Swivel				
1	252909	1	. Retainer Lower Bearing	6	-----	4	. Insulator
2	252908	2	. Outboard Bearing	7	-----	4	. Ring
3	-----	1	. Drive Collar	7A	-----	4	. Insulator
4	252907	4	. Double Brush Holder Kit	8	-----	1	. Bearing Ring w/ Insulator
5	252906	4	. Brush Kit				