



2300 Oregon Street
Sherwood, Oregon 97140-9799 U S A
Tel (503) 625-2560 • Fax (503) 625-5132

PARTS MARKETING BULLETIN

DATE: August 9, 2004

PAGE: 1 of 2

BULLETIN NO. _____ PMB04002

MODEL(S): All 8000 series CLARK
transmissions with roller bearings (1st &
2nd Clutch Groups only)

SECTION: _____ 3-2 (Drivetrain)

ATTENTION: PARTS AND SERVICE MANAGERS

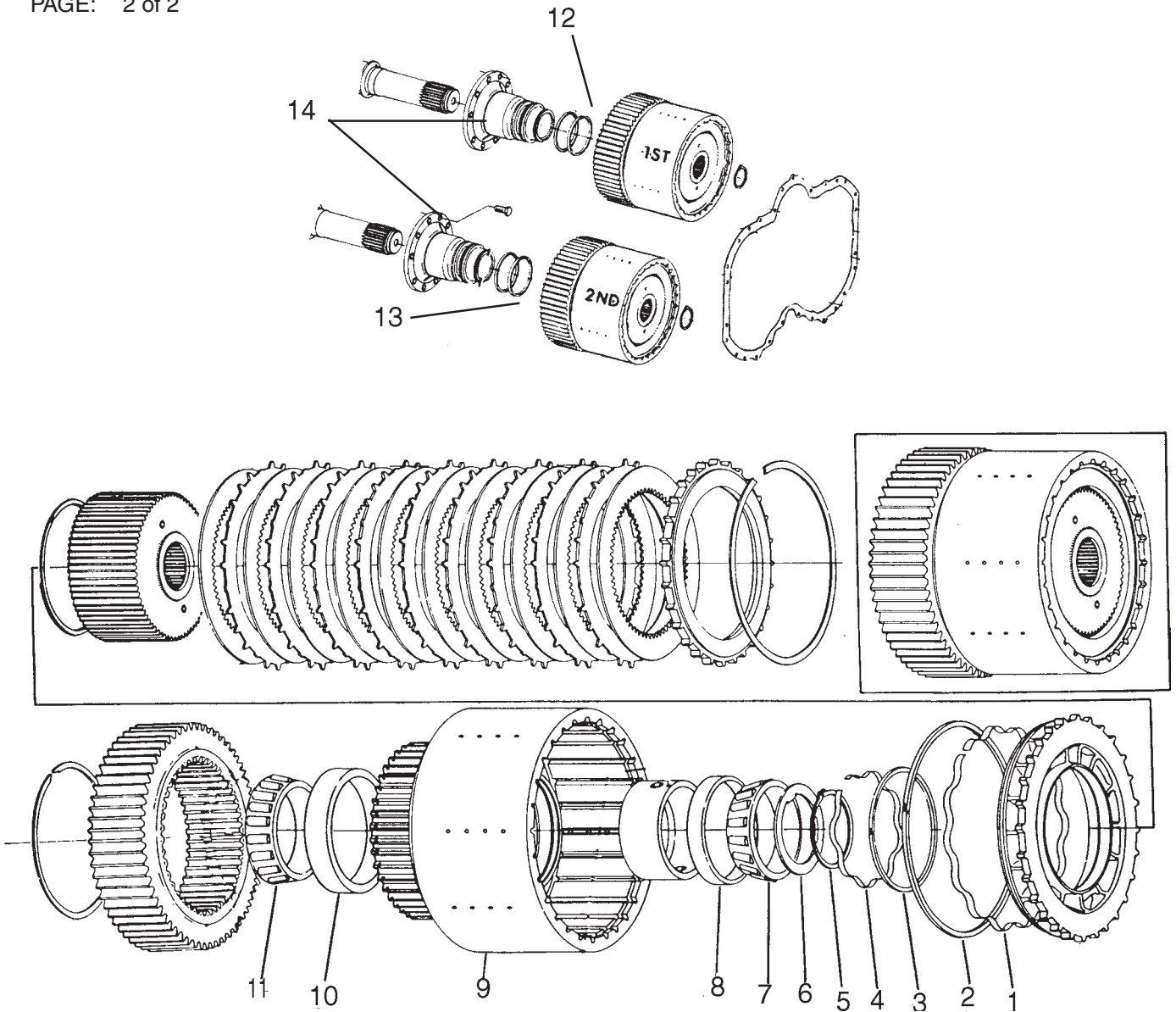
SUBJECT: CLARK 8000 Series transmission

Clutch drum part number 212375 has been discontinued by the vendor. This clutch drum was used for many years in the 1st & 2nd clutch groups on CLARK 8000 series transmissions using the roller bearing design. A conversion kit to a new drum and tapered roller bearings is now available as a replacement (Part Number 581494).

The 581494 kit contains parts to convert one clutch group only. Clutch groups may be upgraded one at a time, meaning that it is acceptable to have different clutch drums and bearing types within the two clutch groups.

IMPORTANT: The installation of the 581494 kit will replace several key components in your transmission. Therefore, it is extremely important to revise your Parts Manual with this Parts Marketing Bulletin to avoid ordering incorrect parts in the future.

For questions or to request price and availability, please contact the Allied Systems Company Service Parts Department.



1st & 2nd Clutch Group

Item	Part No.	Qty	Description	Item	Part No.	Qty	Description
	581494		Conversion Kit	7	219769	1	Bearing Cone
1	230001	1	Spring, Expander	8	202852	1	Bearing Cup
2	230002	1	Spring, Piston	9	219771	1	Drum, Clutch
3	230000	1	Ring, Expander	10	219772	1	Bearing Cup
4	229999	1	Spring, Expander	11	219773	1	Bearing Cone
5	219767	AR	Snap Ring (.119/.125)	12	219676	2	Ring
5a	219768	AR	Snap Ring (.111/.117)	13	219677	2	Ring
5b	247059	AR	Snap Ring (.102/.108)	14	219678	2	Clutch Support
6	223227	1	Washer	AR	As Required		

NOTE: Parts with no item number reference were not affected by the conversion. Refer to service manual for part numbers.