

## Long Reach CPR Paper Roll Clamp



**Engineered specifically for coated paper, the Long Reach CPR paper roll clamp provides strength and durability along with design options for your application.**

- Zero-degree mounting allows the roll end to stay parallel to the floor, preventing crushed edges during roll placement.
- Contact pad options offer secure handling without marking the roll.
- Exclusive, replaceable pad protectors shield outer contact pad surfaces from abrasion, while maintaining a thin, smooth surface to protect adjacent rolls in breakout situations.
- Strong large-diameter pivot pins have heavy-duty, lubricated steel bushings, to provide longer service life for pin and bushing.
- Fixed short-arm models for handling uniform roll diameters are standard on smaller models.
- Positionable short-arm models maintain a thin arm profile for a wide range of roll diameters.
- Heavy-duty 360° continuous rotation is standard.
- Up-front hydraulics reduce the clamp's effective thickness and allow easy access to the components while the clamp is still on the truck.

## CPR Series Coated Paper Roll Clamps

### 42" Diameter Coated Paper Rolls, 2 Functions

Model Number	Capacity (lb @ Roll Dia.)	Roll Range (in)	Short Arm	Truck Size (lb) <sup>1</sup>	Weight (lb)	Lost Load AET (in)	HCG (in)	VCG (in)	Rotation Speed	Mount Class
CPR-30RN-F1242	3,000	12–42	Fixed	4,000	995	4.6	6.3	15.6	6.5 <sup>2</sup>	II

### 45" Diameter Coated Paper Rolls, 2 Functions

CPR-30RN-F1645	3,000	16–45	Fixed	4,000	1,015	4.6	6.6	16.3	6.5 <sup>2</sup>	II
CPR-45RN-F2045	4,500	20–45	Fixed	6,000	1,340	7.5	9.1	15.2	6.5 <sup>2</sup>	II or III
CPR-45RN-P1045		10–45	Pos. <sup>4</sup>		1,370					

### 51" Diameter Coated Paper Rolls, 2 Functions

CPR-24RN-F1651	2,400	16–51	Fixed	4,000	1,050	4.6	7.1	10.0	6.5 <sup>2</sup>	II
CPR-45RN-F2051	4,500	20–51	Fixed	6,000	1,335	7.5	9.7	13.5	6.5 <sup>2</sup>	II or III
CPR-45RN-P1051		10–51	Pos. <sup>4</sup>		1,410					
CPR-66RN-F2451	6,600	24–51	Fixed	8,000	1,860	7.6	9.5	18.3	5.0 <sup>2</sup>	III or IV
CPR-66RN-P1051		10–51	Pos. <sup>4</sup>		1,905					
CPR-72RN-F1551	7,200	15–51	Fixed	10,000	2,815	8.0	9.1	15.5	4.0 <sup>2</sup>	III or IV
CPR-72RN-P1051		10–51	Pos. <sup>4</sup>		2,845					
CPR-80RN-F1751	8,000	17–51	Fixed	11,000	2,825	8.0	9.3	15.5	4.0 <sup>2</sup>	III or IV
CPR-80RN-P1551		15–51	Pos. <sup>4</sup>		2,860					
CPR-90RN-F1751	9,000	17–51	Fixed	12,000	2,825	8.0	9.3	15.5	4.0 <sup>3</sup>	IV
CPR-90RN-P1551		15–51	Pos. <sup>4</sup>		2,860					
CPR-10RN-F3451	10,500	34–51	Fixed	13,500					4.0 <sup>3</sup>	IV
CPR-10RN-P2451		24–51	Pos. <sup>4</sup>							
CPR-13RN-F3451	13,000	34–51	Fixed	15,500					4.0 <sup>3</sup>	IV
CPR-13RN-P2451		24–51	Pos. <sup>4</sup>							

### 60" Diameter Coated Paper Rolls, 2 Functions

CPR-40RN-F2460	4,000	24–60	Fixed	6,000	1,440	7.5	10.5	15.7	6.5 <sup>2</sup>	II or III
CPR-40RN-P1060		10–60	Pos. <sup>4</sup>		1,465			15.4		
CPR-60RN-F2660	6,000	26–60	Fixed	8,000	1,940	7.6	10.2	16.5	5.0 <sup>2</sup>	III or IV
CPR-60RN-P1060		10–60	Pos. <sup>4</sup>		1,985			16.1		
CPR-72RN-F2460	7,200	24–60	Fixed	10,000	2,810	8.0	10.8	17.6	4.0 <sup>2</sup>	III or IV
CPR-72RN-P1060		10–60	Pos. <sup>4</sup>		2,845			17.3		
CPR-85RN-F2460	8,500	24–60	Fixed	12,000	2,855	8.0	10.8	17.9	4.0 <sup>2</sup>	IV
CPR-85RN-P1060		10–60	Pos. <sup>4</sup>		2,920			17.4		
CPR-90RN-F2460	9,000	24–60	Fixed	13,500	3,025	8.0	10.5	18.8	4.0 <sup>3</sup>	IV
CPR-90RN-P1060		10–60	Pos. <sup>4</sup>		3,090			18.2		
CPR-10RN-F2460	10,000	24–60	Fixed	15,500	3,275	8.3	11.1	19.8	4.0 <sup>3</sup>	IV
CPR-10RN-P1060		10–60	Pos. <sup>4</sup>		3,315			18.9		

## 72" Diameter Coated Paper Rolls, 2 Functions

Model Number	Capacity (lb @ Roll Dia.)	Roll Range (in)	Short Arm	Truck Size (lb) <sup>1</sup>	Weight (lb)	Lost Load AET (in)	HCG (in)	VCG (in)	Rotation Speed	Mount Class
CPR-50RN-F3072	5,000	30-72	Fixed	9,000	2,095	7.6	12.1	16.8	5.0 <sup>2</sup>	III or IV
CPR-50RN-P1272		12-72	Pos. <sup>4</sup>		2,140			16.3		
CPR-60RN-F3272	6,000	32-72	Fixed	11,000	2,990	8.0	11.4	10.3	4.0 <sup>2</sup>	III or IV
CPR-60RN-P1672		16-72	Pos. <sup>4</sup>		3,025			17.1		
CPR-75RN-F3272	7,500	32-72	Fixed	13,000	3,200	8.0	11.1	18.5	4.0 <sup>3</sup>	IV
CPR-75RN-P1672		16-72	Pos. <sup>4</sup>		3,270			18.0		
CPR-10RN-F3272	10,000	32-72	Fixed	15,500	3,825	8.4	13.6	21.1	4.0 <sup>3</sup>	IV
CPR-10RN-P1672		16-72	Pos. <sup>4</sup>		3,865			20.2		

## 84" Diameter Coated Paper Rolls, 2 Functions

CPR-80RN-F5084	8,000	50-84	Fixed	15,500	3,795	8.4	14.0	18.4	4.0 <sup>3</sup>	IV
CPR-80RN-P2884		28-84	Pos. <sup>4</sup>		3,835					

<sup>1</sup> Estimated truck size to achieve clamp's rated capacity. Consult the lift truck manufacturer for actual net working capacity.

<sup>2</sup> Rotation speed rpm @ 12 gpm

<sup>3</sup> Rotation speed rpm @ 24 gpm

<sup>4</sup> Positionable

### Capacity

Mounting Class	Truck Rating (lb)
II	2,000-5,500
III	6,000-10,000
IV	10,000-15,500

Match attachment capacity to truck rating for most productive operation. Attachment capacity is a structural rating only that includes the general type of paper for which each model of each series is designated. Net truck capacity, with the attachment, must be obtained from the lift truck manufacturer.

### Minimum Truck Carriage Width

Model Number	Minimum Truck Carriage Width (in)
CPR-24/30	26
CPR-40/45	33
CPR-50/60/66	34
CPR-72/75/80/85/90/10/13	37
CPR-60 (72" dia. models)	37

### Recommended Hydraulic Supply

Model Number	Flow (gpm)	Max psi
CPR-24/30/40/45	12	2,250
CPR-50/60/66/72	12	2,250
CPR-75/80/90/10/13	24	2,250
CPR-85	12	2,500

Hydraulic flow less than minimum may reduce operating speed and/or cause irregular arm movement. Higher flow may result in heat build-up, erratic operation and shortened hydraulic system life.

### Optional Features

Split roll arms: Recommended for handling two rolls up to 1.5" max. difference in diameter. For diameter differences greater than 1.5", consult factory.

CPR-24/30

CPR-40/45/50

CPR-60/66/72/75/80/85/90

CPR-80 (84" dia. models)

Restricted rotation: 90° or 180°

Special contact pad surfaces

Non-lubricated bushings

Clamp force gauge

Pivot frame

Sequenced arm movement

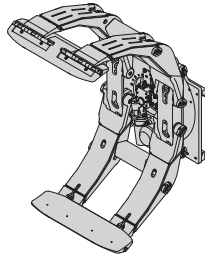
Double diameter tissue pads, with or without flared ends

Swivel cover kit

## Paper Handling Options from Long Reach

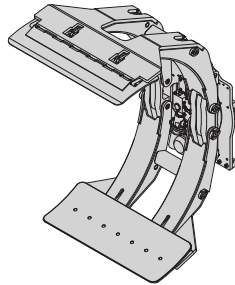
### KPR Series Kraft Paper Roll Clamps

- Fixed short-arm models easily handle uniform roll diameters
- Positionable short-arm models for a wide range of roll diameters
- 0° mounting; heavy-duty 360° continuous rotation
- Position-controlled short arm movement
- Inverted waffle pattern standard contact pad surface on all units



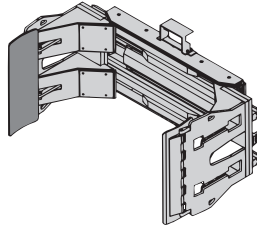
### CPR Series Coated Paper Roll Clamps

- The strength and durability needed to handle coated paper
- Fixed short-arm models easily handle uniform roll diameters
- Positionable short-arm models for a wide range of roll diameters
- 0° mounting; heavy-duty 360° continuous rotation
- Position-controlled short arm movement



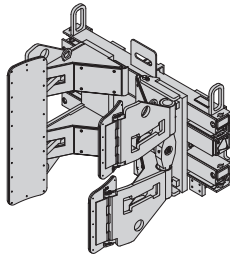
### KTR Series Tissue Paper Roll Clamps

- Flared arms and All-Grip pads avoid “bruising” soft tissue rolls
- Fixed short-arm models easily handle uniform roll diameters
- Positionable short-arm models for a wide range of roll diameters
- Up to 84" roll diameters; larger diameters available
- Position-controlled short arm movement



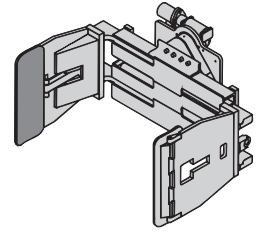
### SQ Sliding Arm Paper Roll Clamps

- For break-out in warehouses, trucks, and railcars
- Thin-arm profile over a wide range of roll diameters
- Ideal for use in confined areas, for tunneling and “T” loading
- Rotating and non-rotating models available



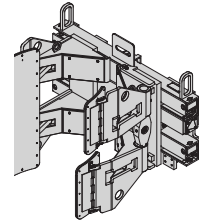
### Twin Pack™ Paper Roll Clamps

- Handles 1 or 2 rolls side-by-side
- Clean, grease-free handling — no lube arm slides
- Features ARPAD™ (Automatic Roll Positioning Arm Design)
- Internal sideshift improves maneuverability



### Quad Pack™ Paper Roll Clamps

- Handle 1, 2 or 4 rolls at a time with equal length split arms
- Clean, grease-free handling — no-lube arm slides
- Features ARPAD™ (Automatic Roll Positioning Arm Design)
- Internal sideshift improves maneuverability

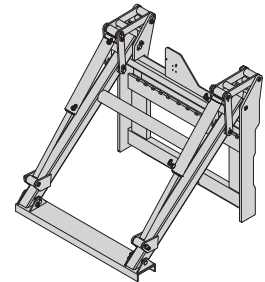


### All-In-One Pulp/Paper Clamps

- Interchangeable, slip-on arms for versatility
- Quad and Twin Pack configurations
- Handles pulp bales with pulp bale arms
- Clean, grease-free handling — no-lube arm slides

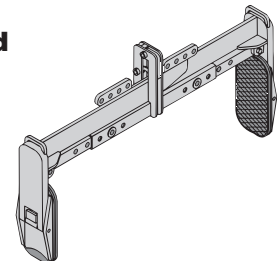
### Broke Paper Clamps

- Firmly grips and holds broke paper on forks while traveling
- Allows excellent operator visibility
- Arms extend fully out of the way to allow normal use of forks
- Quick-change lower hooks included



### RHC-65 Series Roll Head Clamps (Grappler)

- Positive lever arm clamping force applied to roll
- Adjustable roll ranges and clamping force
- Automatic latch and unlatch
- Flattened, expanded metal pad surface for sure grip



Choose Long Reach for serviceability, value, and custom design

Multi-Pallet Handlers  
Fork Positioners  
Integral Carriages  
Paper Roll Clamps  
Lateral Clamps

Carton Clamps  
Push-Pulls  
Rotators  
Custom Design

21433 SW Oregon Street  
Sherwood, Oregon 97140-9799 USA  
Toll free: (800) 285-7000  
Phone: (503) 625-2560  
Fax: (503) 625-7269  
Email: [marketing@alliedsystems.com](mailto:marketing@alliedsystems.com)  
[www.alliedsystems.com/Longreach](http://www.alliedsystems.com/Longreach)

**LONG REACH**<sup>®</sup>  
A Division of Allied Systems Company