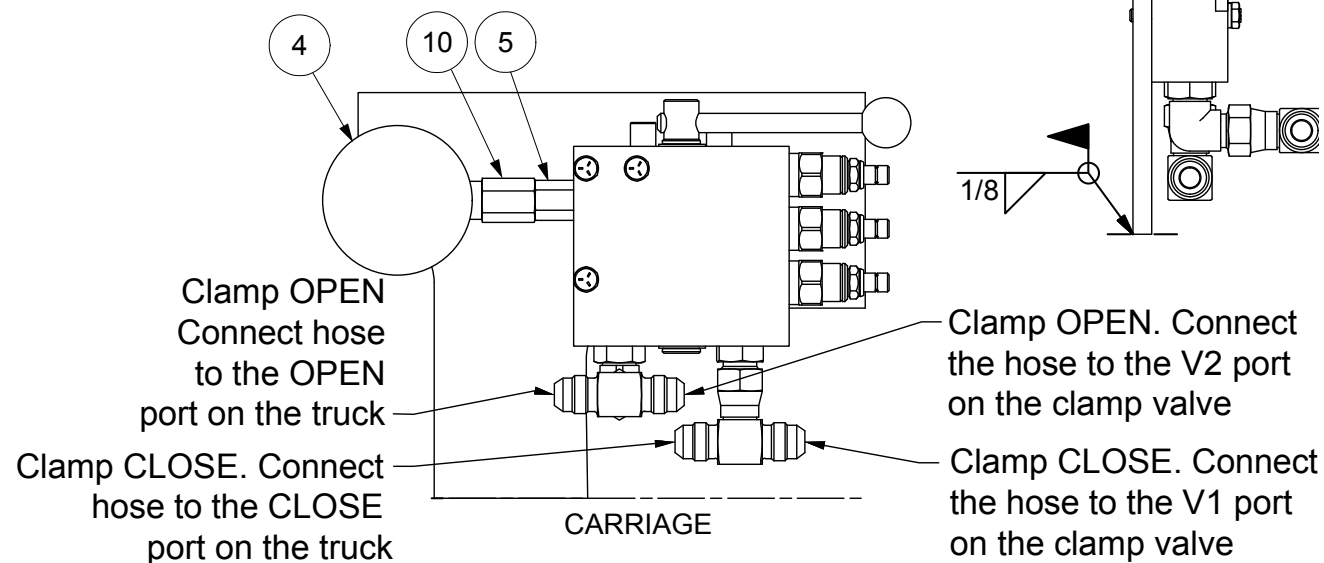
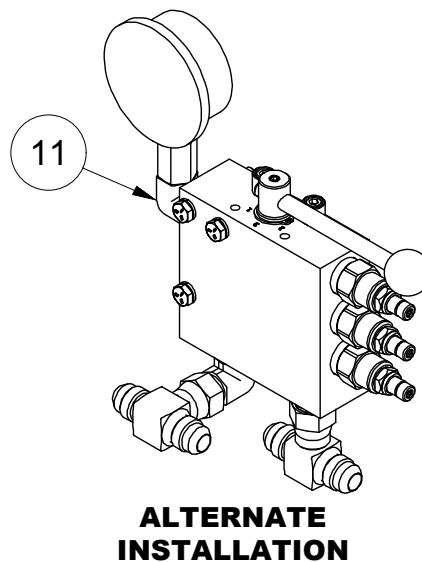
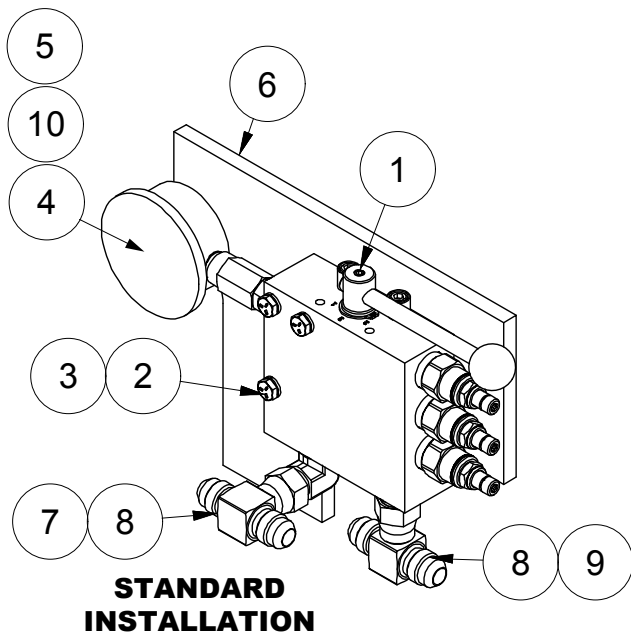


3 Position Valve Installation Instructions



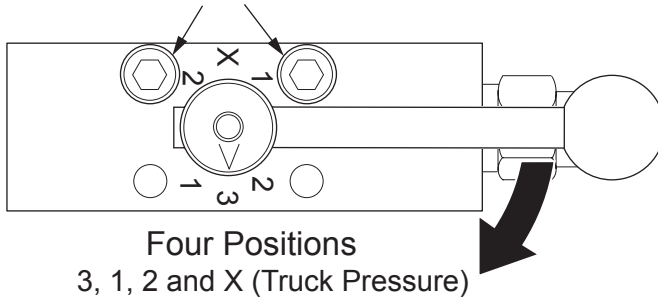
Item	Part No.	Qty	Description	Item	Part No.	Qty	Description
	2500194		Valve Group				
1	YL-354	1	. Selector Valve	6	Y20314-23	1	. Valve Plate
2	Y01C-0432	3	. Screw	7	209488	1	. Fitting, EI
3	R13812512	3	. Washer	8	211367	2	. Fitting, Tee
4	2516425	1	. Gauge	9	209805	1	. Fitting, Str
5	217577	1	. Fitting, Str	10	2516426	1	. Fitting
				11	231316	1	. Fitting, EI

Top View

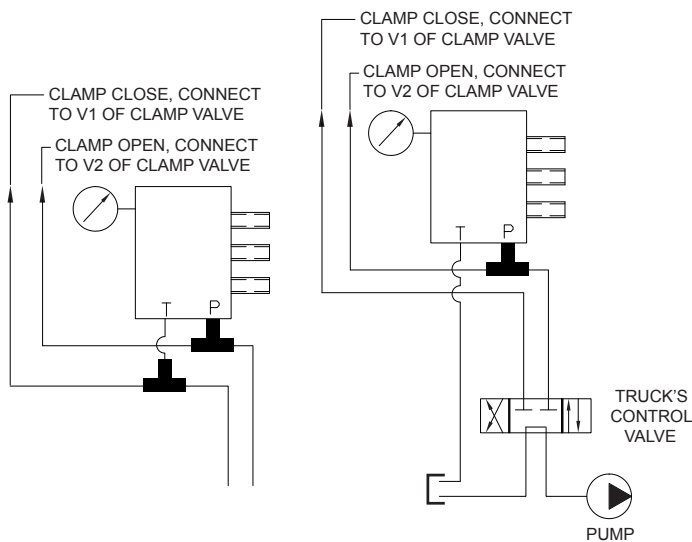
Handle stop posts. Move as necessary to suit your installation.

Positional for 2, 3 or 4 positions.

Position "X" is for truck system pressure.



Schematics of two optional installations



Notes

1. "X" position is truck pressure.
2. Tee fitting must be used in the "P" (Pressure) port. Use only short hoses if necessary between the tee fitting and the valve's port(s).
3. Setting of the relief valve sections must be made to fit the load's requirements.
4. The gauge may show pressure loss after the control handle is released. This is truck pressure. Clamping pressure readout is only accurate when the handle is in the clamp position.
5. Each cartridge is adjustable to +/- 200 of its rated PSI when the selector is set on that position.

Mounting hole dimensions

