

MOUNTING GROUP WITH HOSE REEL

1. FEATURES
2. INSTALLATION
3. CHECK FOR CORRECT OPERATION
4. CHANGING THE REELING DIRECTION
5. CHANGING THE SPRING BOX DIRECTION
6. ADVICES

1. FEATURES

The reel is normally delivered with right hand mounting with the spring box placed internally toward the center of the upright. It can be transformed into left hand version and with the spring box in internal or external position.

The junction block can also be mounted RH or LH. However it is advised to set the fixed base toward the center of the truck in order to connect the hoses from the attachment in this position.

2. INSTALLATION

Usually the hose reel is mounted on the upper part of the external upright (see drawing I) taking care that: it does not jut out over the upright (A); that sufficient space is available for the junction block to rotate with its hoses during the liftings (B) and that it allows complete backward tilting without interfering with the overhead guard (C). The junction block must be mounted on the back side of the carriage, high enough not to interfere with the wheel in lowest position tilted backward (D). Also check that it does not interfere with the tilt cylinder articulation (E). In case of a very narrow carriage the junction block must not be mounted much toward the center and that is when it can be necessary to set the reel with the spring box externally.

To get a good reeling, the middle point of the rotating part of the junction block must be in line (parallel to the upright) with the center flange of the reel.

Connect the hose of the reel to the junction block after having prestressed the spring (2-3 turns for hoses 6 or 8 mm and 4 turns for hoses of 10 mm). Mount the bracket F checking in the meantime that complete tilting can be done without pulling on the hoses or squeezing them between the upright and the dashboard of the truck.

3. CHECK FOR CORRECT OPERATION

Lift up a few time with full pressure, observe the reeling of the hoses and at the end inspect all the connections for leaking.

If the hoses reeling is not regular, it means that the hoses are under torsion or that the junction block is not in line with the reel.

If, when the junction block come to closest point from the reel (maximum reeling point) the hose is loose and has tendency to jump out of the reel, it is necessary to increase the preload of the spring, keeping in mind that it is indispensable that at the end of the lifting operation (minimum reeling point) the spring may not be at the end of its stroke.

LONG REACH[®]

4. CHANGING THE REELING DIRECTION

To render LH or RH hose reel with the spring in internal position, operate as follows:

- 1° Take out the snap ring H (drawing II)
- 2° Take out the flange assy O from pin Q loosening the screws I
- 3° Take off the spring box P by rotating it to the left in order to release the spring from its anchor
- 4° Take off the spring R from its box by loosening the nut L and remount it immediately counterwise. The spring remains packed in a plate cage: however it is advised to execute this operation with care to avoid any escape of its end
- 5° Put the anchor screw on the pin in the next hose in the same radial position
- 6° Assemble the box P on the pin
- 7° Slide on the flange assy O and fix it by screws I
- 8° Clip in its groove the snap ring.

5. CHANGING THE SPRING BOX POSITION

In order to do this operation proceed as per points 1, 2, 3, 4 and 5 if the reel must be in LH version. Moreover:

- a) displace the anchor screw M to the opposite position on the pin (drawing III),
- b) displace the plug N to the opposite groove at the end of the pin,
- c) mount the flange assy and the snap ring,
- d) assemble the spring box to the flange by means of the adequate screws.

ADVICES

Avoid marks on the pin or in the hub. Reassembling requests the maximum cleanliness.

In case that the hoses are not supplied by Allied, its is advised SAE 100/R5 grade.

The various nipple and connections must be with as large as possible interna section and if curved, with large radius in order to avoid oil disturbances. Note: threading lenght, of internal connections to the hub, must not be over 10,5 mm.

The hose reel does not require maintenance neither does the junction block: it is recommended to inspect periodically the hoses and connections

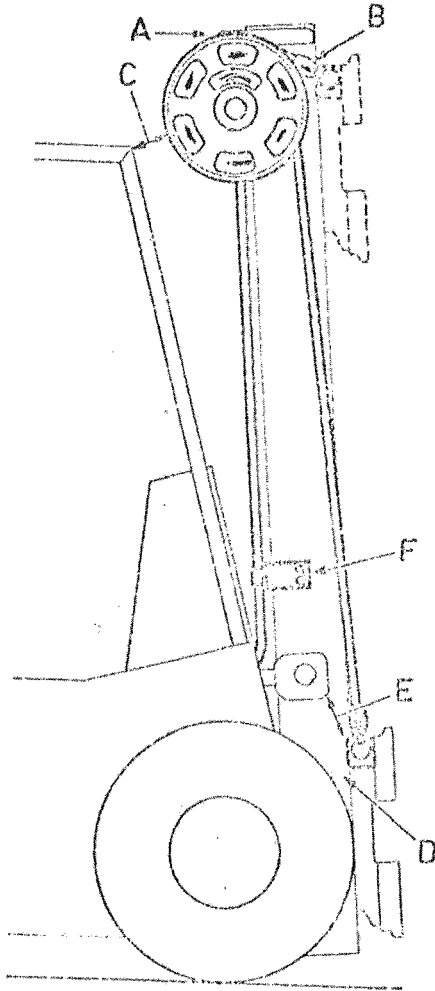


FIG. I

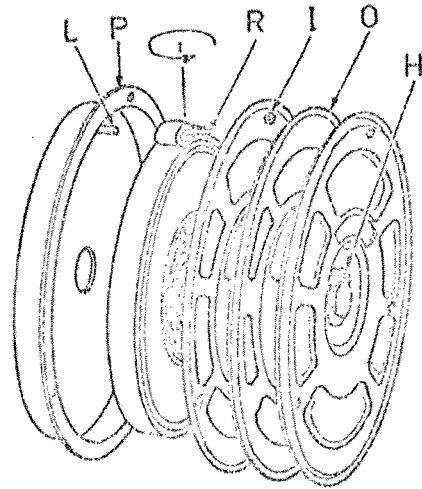


FIG. II

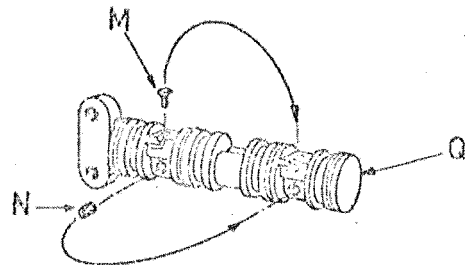
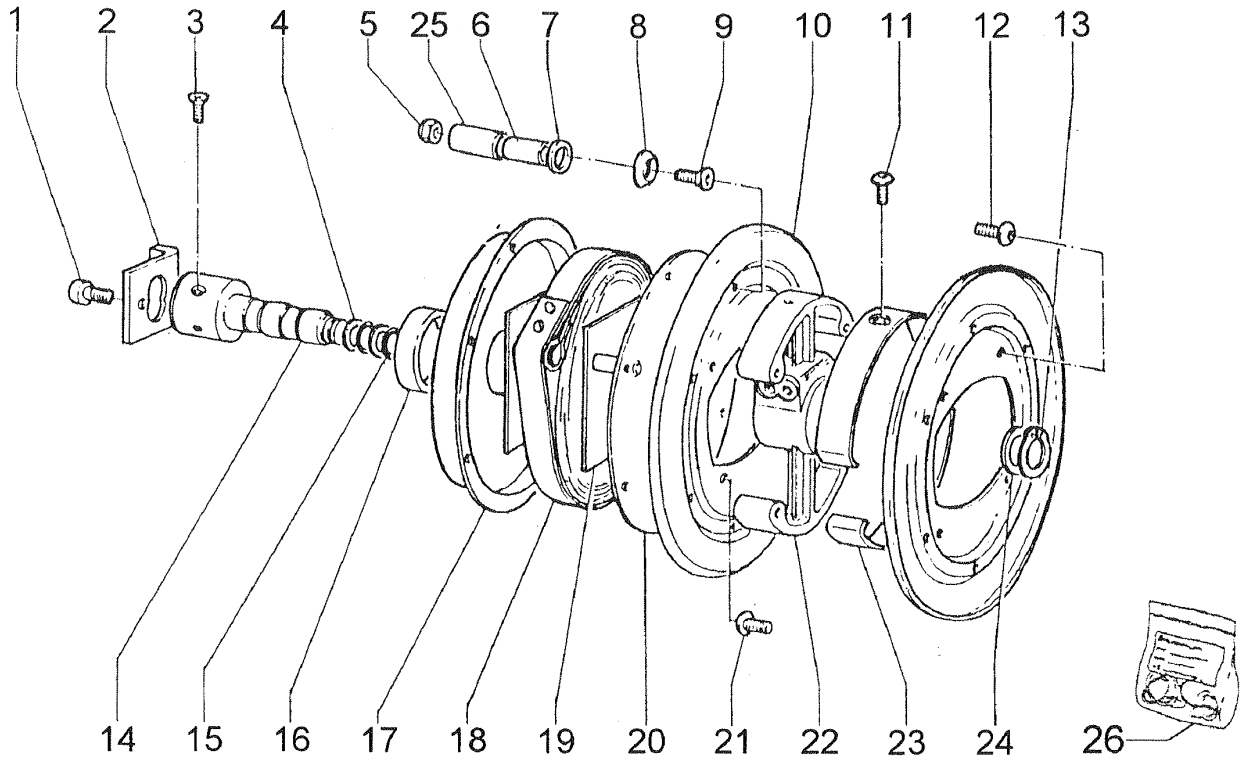


FIG. III

LONG REACH®

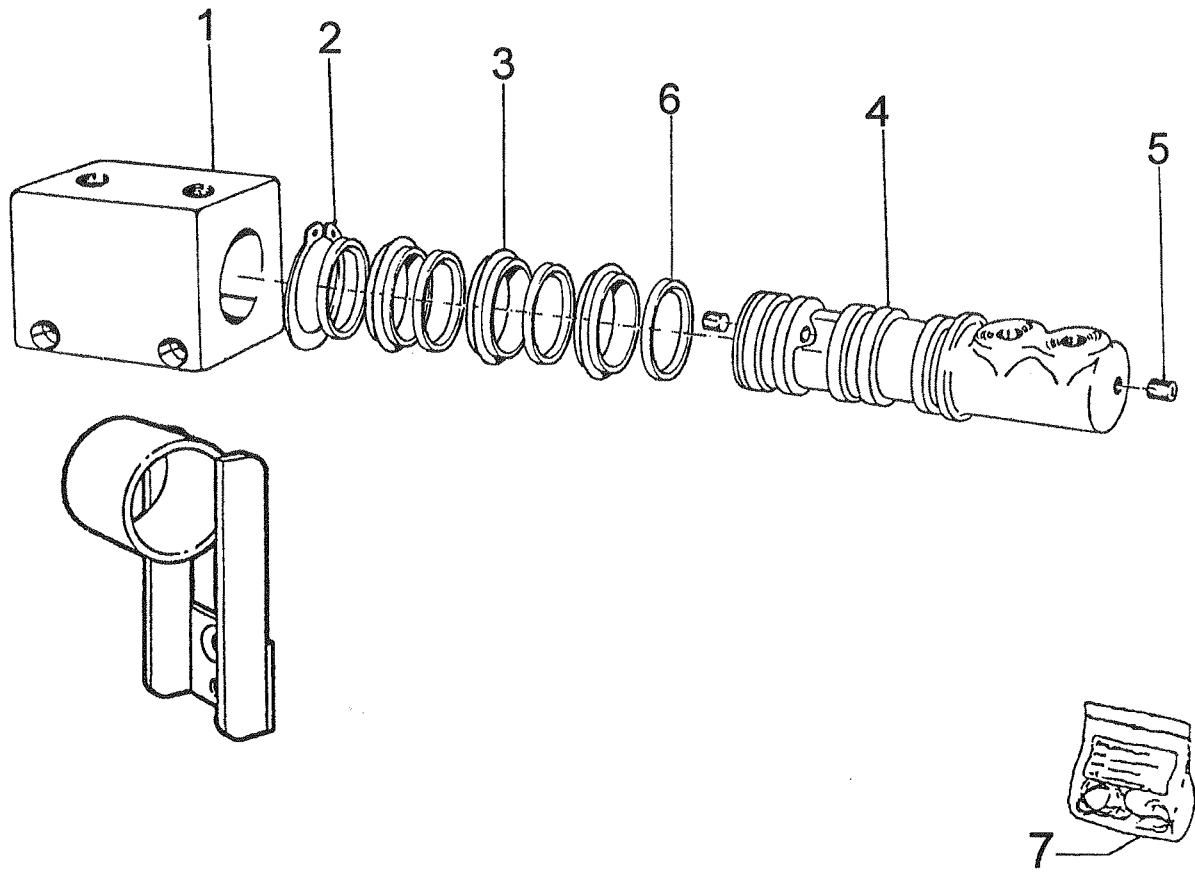


POS	-DESCRIPTION
1	-SCREW
2	-FIXING BRACKET
3	-SCREW
4	-FIXING RING
5	-NUT
6	-SPACER
7	-SPACER
8	-WASHER
9	-SCREW
10	-DISK
11	-SCREW
12	-SCREW
13	-RING
14	-PIN
15	-SEAL
16	-SPACER
17	-SPRING BOX
18	-SPRING
19	-SILENCER
20	-GRIPPING DISK
21	-SCREW
22	-SLEEVE
23	-REAL
24	-WASHER
25	-SILENCER

§ 26 KIT GUARNIZIONI.

§ RECOMMENDED SPARE PARTS INVENTORY

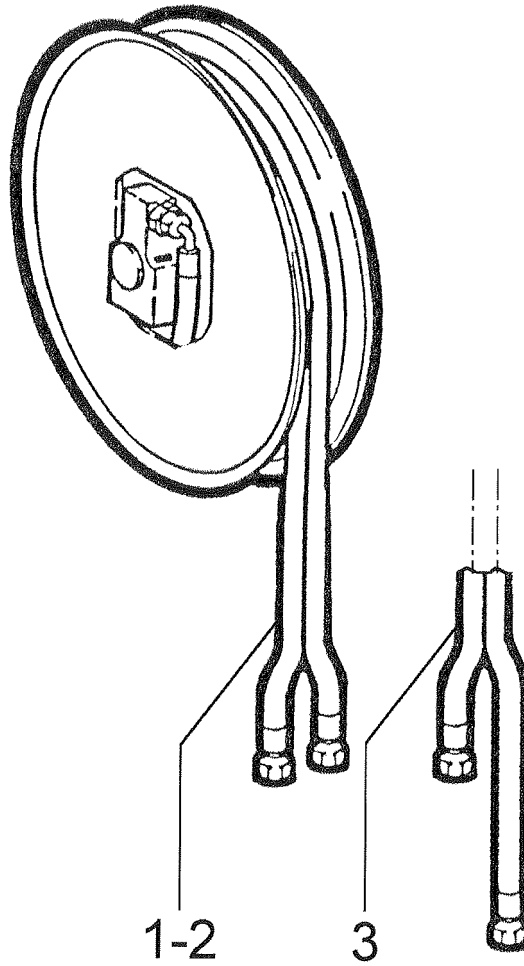
LONG REACH®



POS	-DESCRIPTION
1	-BODY
2	-RING
3	-RING
4	-PIN
5	-PLUG
6	-SEAL
§ 7	-KIT POS. n° 3

§ RECOMMENDED SPARE PARTS INVENTORY

LONG REACH[®]



POS	-DESCRIPTION
1	-HOSE 1/4"
2	-HOSE 3/8"
3	-HOSE 1/4"