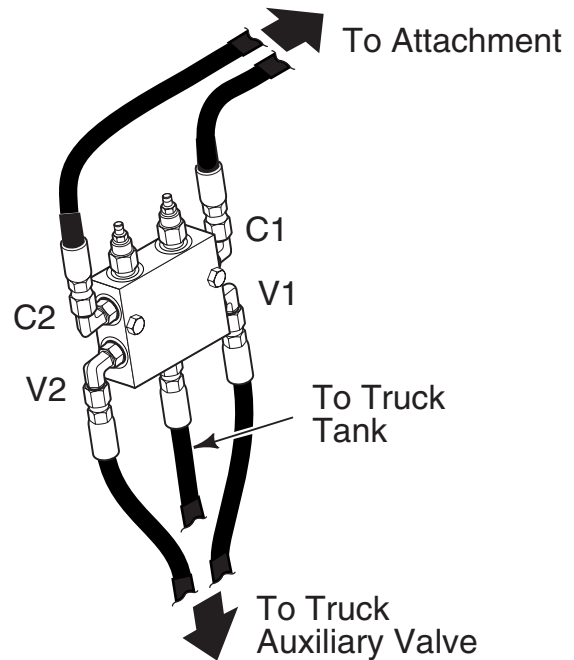
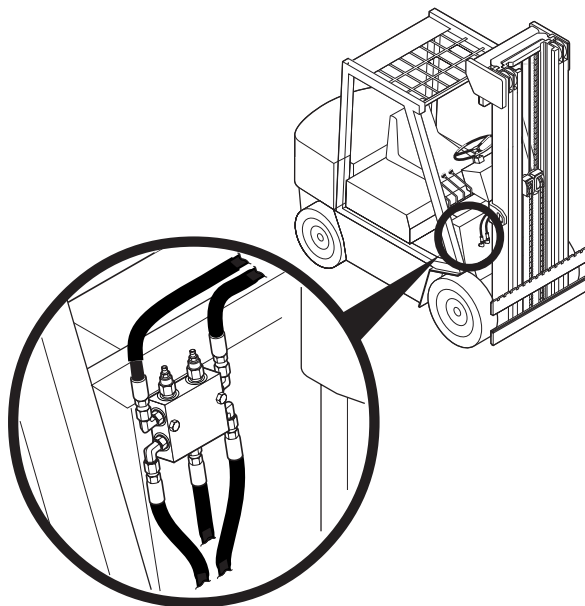


Installation Instructions Flow Control Valves with Return to Tank

This document includes installation instructions and a replacement parts list for flow control valves with return to tank. The valve reduces the flow rate to the attachment and returns excess flow to the truck tank. The valves are available in the flow rates listed below.

Max Input Flow (GPM)	Output Flow (GPM)	Flow Control Valve (part no.)	Flow Control Cartridge (part no.)
30	3.5	2501634	2501638
30	5	2501635	2501639
30	7	2501636	2501640
30	10	2501469	2501641
30	12	2501637	2501642

- 1 Install five No. 8, 37° JIC/O-ring fittings in the valve body ports. The truck auxiliary valve to flow control valve hoses, tank hose and fittings must be No. 8.
- 2 Determine a valve mounting location on the truck cowl. The valve must clear the mast when fully tilted back. Use the shortest hose route possible from the truck auxiliary valve fittings to the flow control valve fittings.
- 3 Mount the valve on the truck cowl using 3/8 in. diameter capscrews (user supplied).



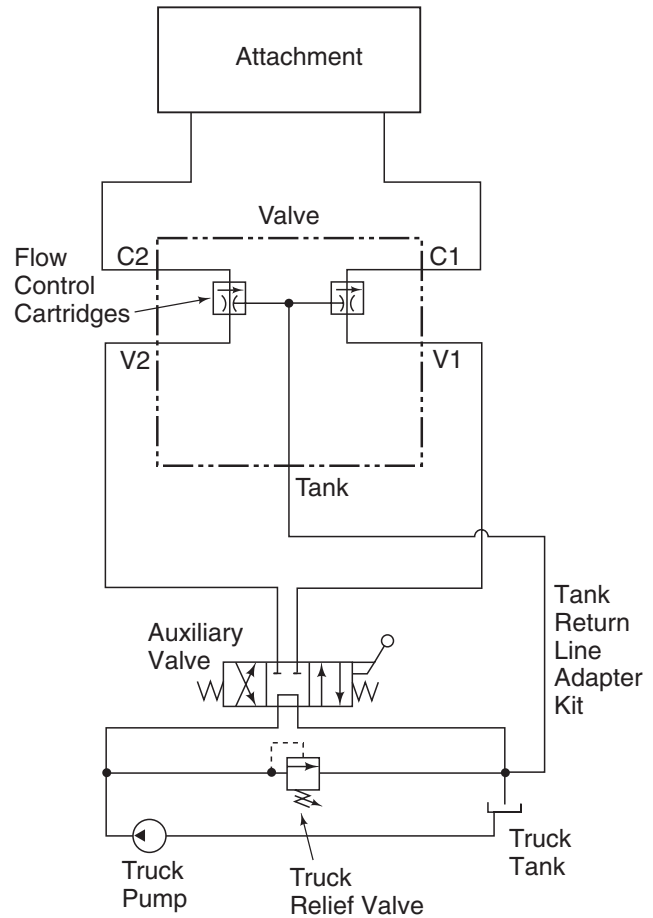
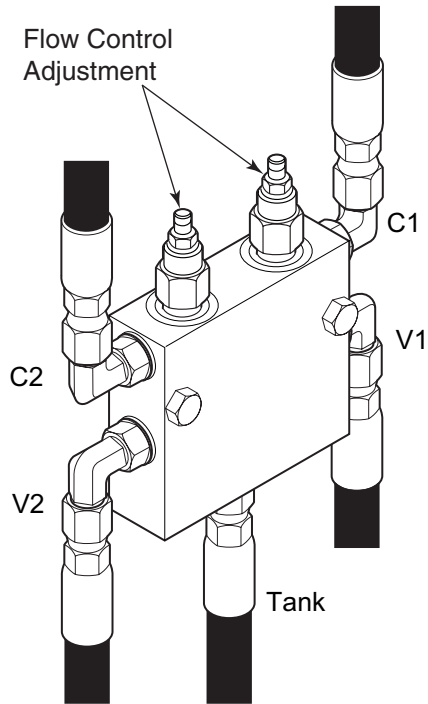
- 4 Make two No. 8 hose assemblies to run from the valve fittings (V1 and V2) to the truck auxiliary valve fittings. Install the hoses.

Note: Port V1 is the input port for C1 output.

- 5 Connect the attachment supply group hoses to the valve output fittings (C1 and C2).
- 6 Install a low pressure return line adapter kit to run from the valve tank fitting (tank) to connect to the truck tank main return hose. Return line adapter kits are listed below for different ID tank hoses.

Tank Hose ID	Single Line Adapter Kit
.75 in. (19 mm)	2501369
1.00 in. (25 mm)	2501370
1.25 in. (31 mm)	2501371

- 7** The flow control cartridges are adjustable $\pm 10\%$. Adjust each flow control separately to provide a satisfactory speed for the corresponding attachment function or to achieve a specific flow volume. Loosen the locking nut and turn the adjusting screw clockwise to decrease or counterclockwise to increase the volume.



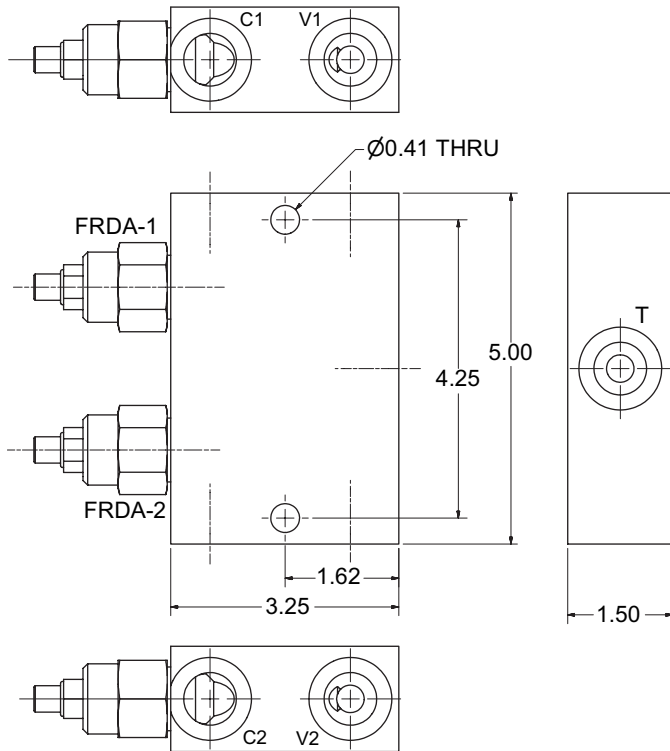
- 8** The flow volume can be checked by installing an in-line flow meter between the attachment and flow control valve.

Before returning the truck/attachment to service operation, test all functions to assure they perform correctly, and inspect for leaks.

**For service and parts information
call 1-800-285-7000**

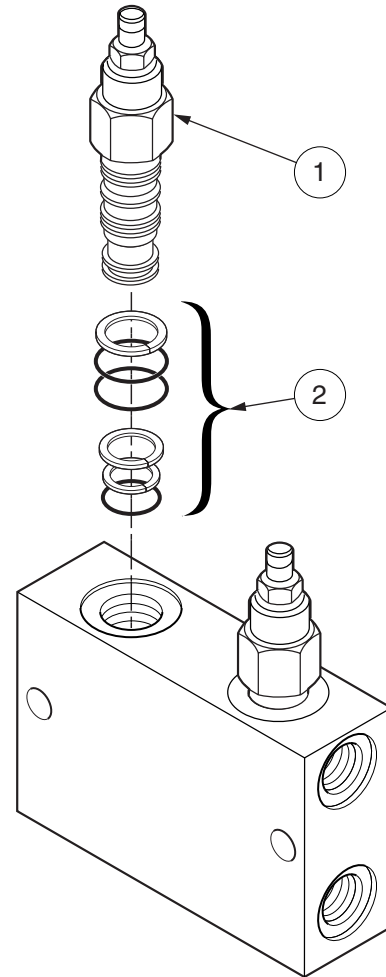
LONG REACH®

A Division of Allied Systems Company



NOTE:

- 1) ALL DIMS. REF.
- 2) FOR CARTRIDGE SERVICE, TORQUE TO 45-50 LB-FT
- 3) ALL PORTS #8 SAE



Item	Part No.	Qty	Description
	2501645		Flow Control Valve
1	*a -----	2	. Flow Control Cartridge
2	2501643	1	. Flow Control Valve Seal Kit
3	*b 2501644	1	. Flow Control Valve Spec. Sheet

*a See Chart

*b Part Not Shown

VALVE PART NUMBER	OUTPUT FLOW GPM	ITEM 1 - CARTRIDGE
2501634	3.5	2501638
2501635	5	2501639
2501636	7	2501640
2501469	10	2501641
2501637	12	2501642