

INSTALLATION MANUAL HYDRAULIC HOSE REEL

TABLE OF CONTENTS

SECTION	PAGE	SECTION	PAGE
1	HOW TO ORDER PARTS	3	MAINTENANCE SCHEDULE..... 11
1.1	HOW TO ORDER PARTS..... 2		
1.2	MODEL IDENTIFICATION..... 3		
2	INSTALLATION PROCEDURE		
2.1	RH TO LH REVERSAL 5		
2.2	INSTALLATION..... 7		

SECTION 1

HOW TO ORDER PARTS

1.1 How to Order Parts

For quick, professional, and courteous service when you need parts for your equipment, here is what you should do:

1. Locate the model identification tag on the equipment.
2. Make a note of the model number and serial number.
3. Refer to the appropriate pages in the parts manual for the correct part number and quantities.
4. Call your local Long Reach dealer from whom you purchased the clamp.
5. If you are unable to identify the selling dealer, contact Allied Systems Long Reach with the serial number. Allied Systems Long Reach will identify the dealer for you.

For handy reference, write the name of your Long Reach dealer here:

DEALER NAME _____

ADDRESS _____

PHONE _____

CONTACT _____

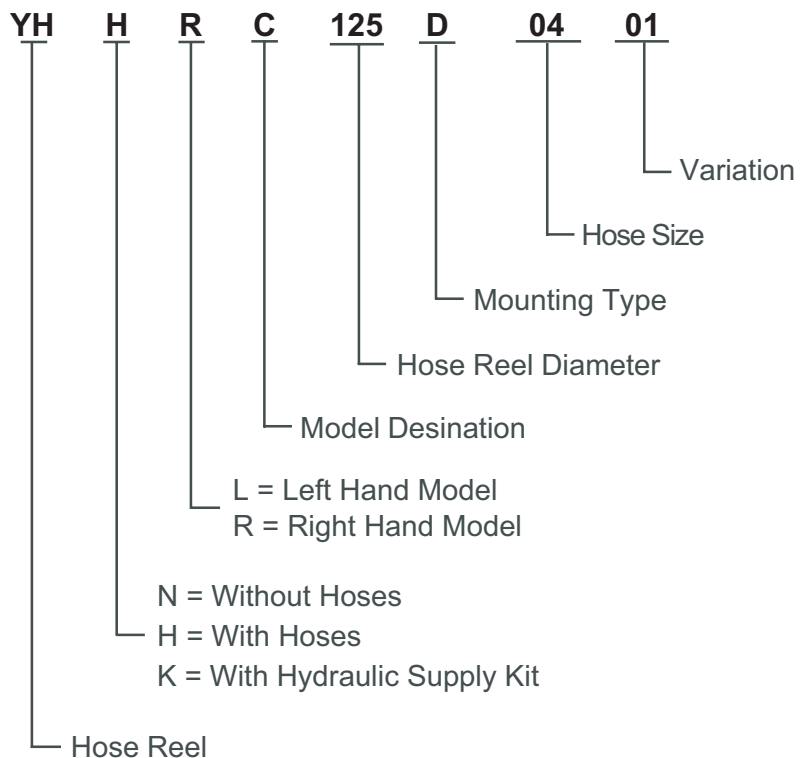
1.2 Model Identification

Each reel is identified by a model number and a serial number located on the name plate attached to the unit prior to shipment.

Before ordering replacement parts for any unit, be sure to use the correct parts list for your model number. Always include model and serial number when ordering parts or requesting service information.

NOTE: When you receive your attachment, locate the Long Reach nameplate and record the information to the blank nameplate tag with the date received in the space provided on the bottom of this page. If the name plate is missing, look for the serial number stamped directly into the metal at the original location and consult factory.

Long Reach • A Division of Allied Systems Company			
MODEL NO.:			
SERIAL NO.:			
MAXIMUM HYD. PRESS.:		PSI	WEIGHT: LBS
CAPACITY:		LBS @	Inch LC
SEE TRUCK NAMEPLATE FOR COMBINED TRUCK & ATTACHMENT NET CAPACITY			
HOR. CG:	inches	VERT. CG:	inches
		LOST LOAD /AET:	inches
CG AND AET SPECIFICATIONS ARE APPROXIMATE			
Manufactured By Allied Systems Company • 21433 Oregon Street, Sherwood, OR 97140 USA www.alliedsystems.com 2500005 RC			



Date Received:

		-			-		
--	--	---	--	--	---	--	--

SECTION 2 INSTALLATION PROCEDURES

2.1 Reel RH/LH Reversal Instructions

The "Competitor" is the first truly reversible hose reel on the market. You can reverse this reel without disturbing the seals in the reel. It can be quickly reversed with a minimum of tools and skill. The few parts required are included with this instruction book.

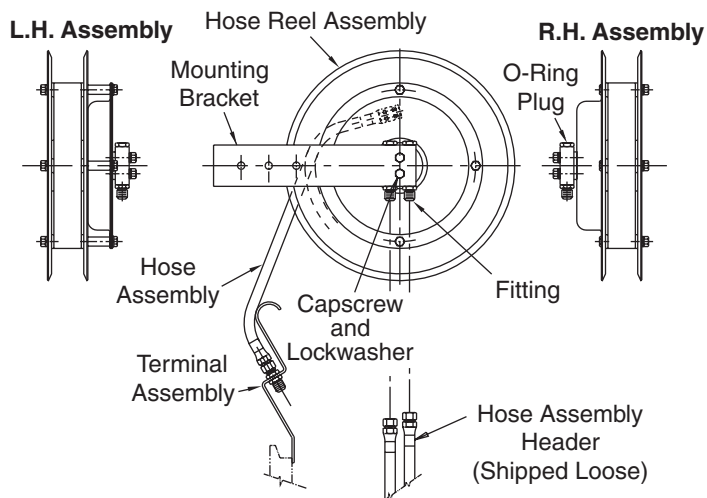


Figure 2-1

The required conversion parts are:

Converting from RH to LH

(4) 16782W Capscrew
(4) Y160156 Spacer

Converting from LH to RH

(4) 16836W Capscrew
(4) Y061862 Shim

You will need a screwdriver, a 1/2", 9/16", and 7/8" wrench.

1. REMOVE MOUNTING BRACKET: Place the hose reel on a flat surface with the mounting bracket up. Using a 9/16" wrench, remove the 2 bolts holding the mounting bracket to the shaft. BE SURE to remove and save the two small o-rings found between the mounting bracket & shaft.

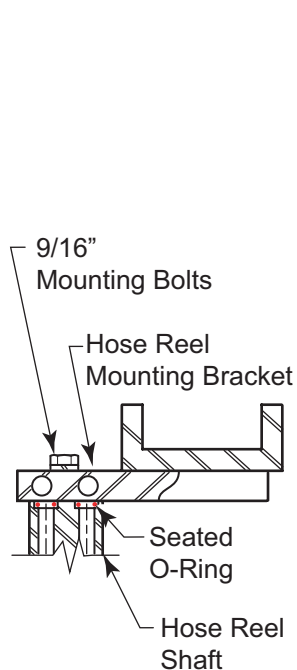


Figure 2-2

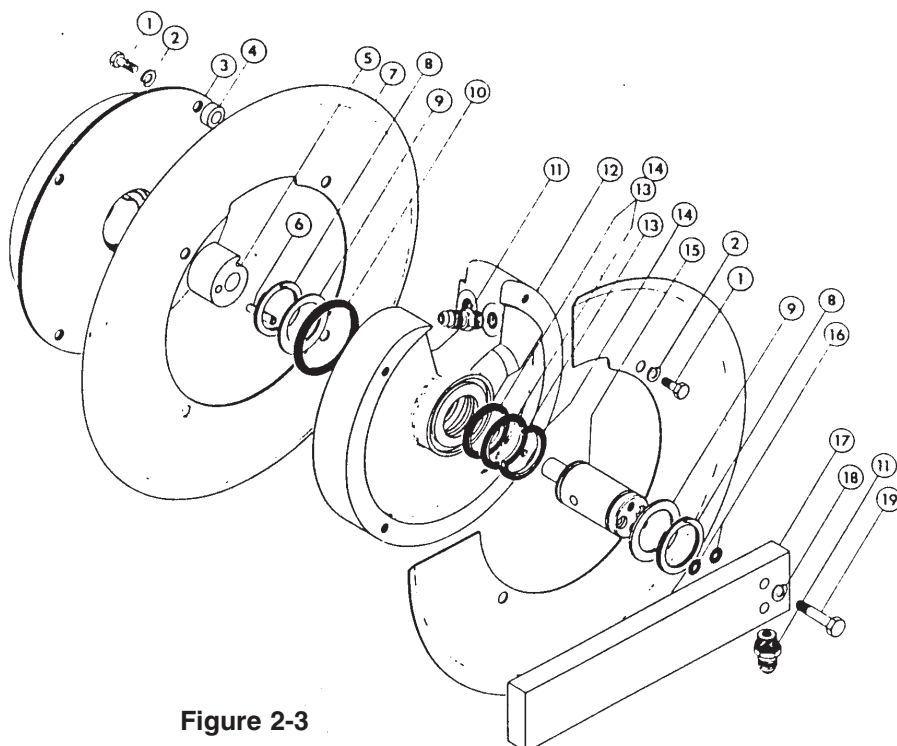


Figure 2-3

2. **REVERSE MOUNTING BRACKET:** Using a 7/8" wrench, remove the 2 plugs from the mounting bracket and save. Remove the 2 adapter fittings from the mounting bracket and re-install them into the ports vacated by the plugs. Re-install the 2 plugs into the ports that held the adapter fittings. Set the reversed mounting bracket aside.
3. **REMOVE SPRING CAN:** Using a 1/2" wrench, remove the four bolts holding the spring can. Lift the spring can free of the shaft and set aside. Discard the 4 bolts and the 4 shims or spacers found between the spring can and hose reel flange. Save the 4 lock washers for re-use.
4. **REVERSE SPRING PAWL:** On the shaft you will see the spring pawl held in place with a wire retainer. Lift the retainer off the spring pawl. Turn the spring pawl so it faces the opposite direction and replace the wire retainer onto the spring pawl.
5. **REVERSE SPRING:** Turn the spring over from its' original position and lower onto the shaft. Check that the spring pawl is correctly orientated by rotating the spring. If you are converting to a LH reel (spring can flange off the hose reel flange) you will feel the spring catch as you rotate the spring clockwise. If you are converting to a RH reel (spring can flange on the hose reel flange) you will feel the spring catch as you rotate the spring counter-clockwise. If it does not catch remove the spring can and orient the spring pawl catch per paragraph 4 above.

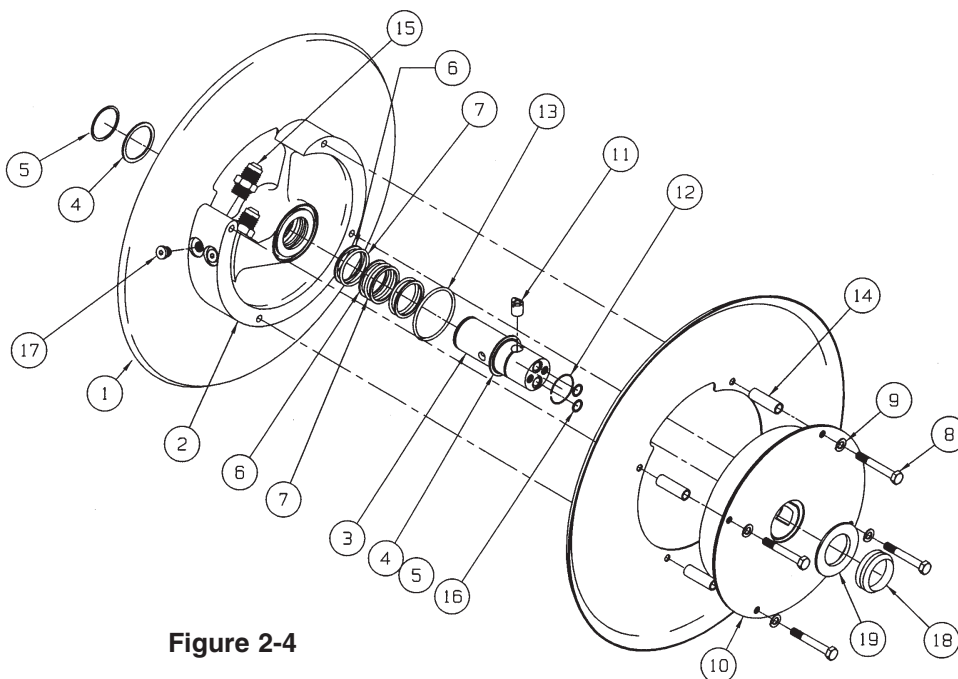


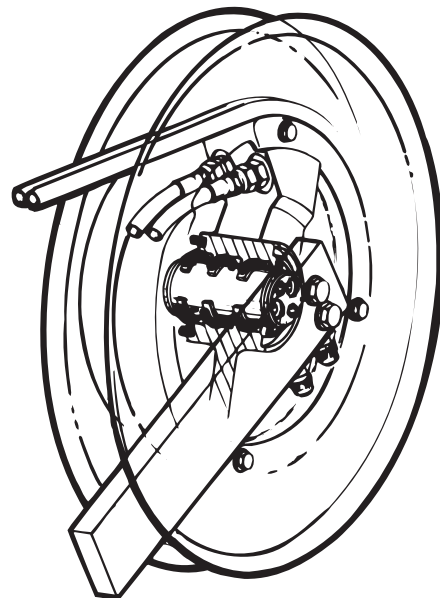
Figure 2-4

6. **INSTALL SPRING:** Using the parts from the conversion kit, place the spacers (if converting to a LH reel) or shims (if converting to a RH reel) between the hose reel flange and the spring can flange. Install the provided capscrews using the saved lock washers. Tighten with a 1/2" wrench. **CAUTION:** Do not over tighten or the aluminum will be damaged.
7. **INSTALL MOUNTING BRACKET:** Place the saved o-rings into the insets around the ports on the end of the shaft. **CAUTION:** These o-rings do not go around the threaded holes. Position the mounting bracket on the end of the shaft and install the capscrews using the 9/16" wrench.

You have completed reversing your hose reel.

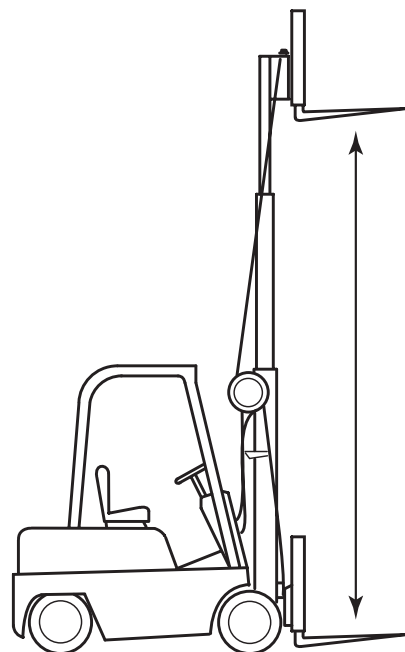
2.2 Installation

First be sure to have the correct reel for your application. The model number of the reel should begin as noted in the chart below. If you are unsure call 1-800-285-7000 for assistance. Select the hose length you will be using the reel with.



	#4 Hose	#5 Hose	#6 Hose	#8 Hose
Two Stage Masts				
81-100"	YH*RC125 YH*RC145	YH*LC125 YH*LC145	YH*RC145 YH*RC165	YH*LC145 YH*LC165
101-140"	YH*RC145 YH*RC145	YH*LC145 YH*LC145	YH*RC145 YH*RC165	YH*LC145 YH*LC165
Three Stage Masts				
73- 81"	YH*RC145 YH*RC145	YH*LC145 YH*LC145	YH*RC145 YH*RC165	YH*LC145 YH*LC165
82- 90"	YH*RC145 YH*RC165	YH*LC145 YH*LC165	YH*RC165 YH*RC165	YH*LC165 YH*LC165
91-110"	YH*RC145 YH*RC165	YH*LC145 YH*LC165	YH*RC165 YH*RC165	YH*LC165 YH*LC165

* The third digit may be either a H, K, or N depending on the kit purchased.



1. Locate the hose reel mounting bracket as high on the mast as practical. The distance from the back of the carriage fork bar to the front edge of the reel flange must be a minimum distance of 4.50 inches. Care should be taken to insure the reel will clear the overhead guard when the mast is tilted back.

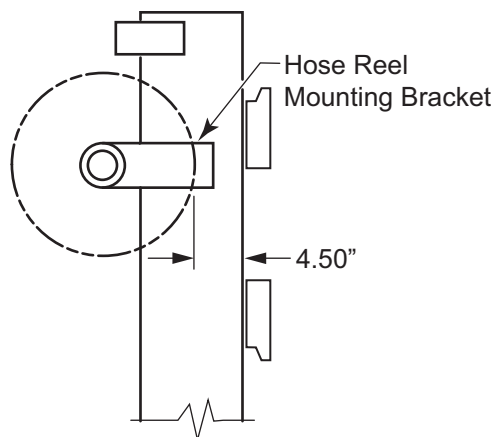


Figure 2-5

2. Tack weld the reel mounting bracket in place. Measure the distance from the side of the mast to the centerline of the hose reel.

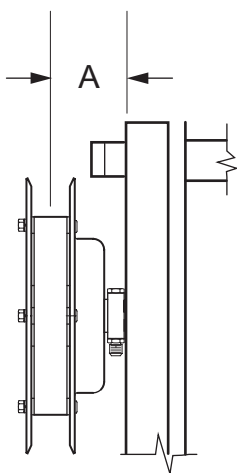


Figure 2-6

3. Locate the terminal bracket on the truck carriage by lowering the truck carriage to the ground and tilting it all the way back. Locate the terminal bracket on the back of the top fork bar without hitting the front tire. Tack weld in place with the centerline of the bracket the same as measured in paragraph 2 above.

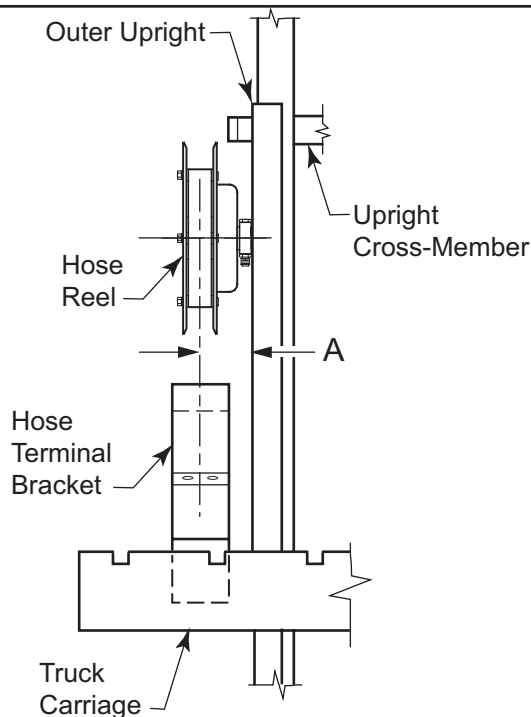


Figure 2-7

4. Check for clearance. Tilt the mast all the way forward. SLOWLY raise the carriage until the top of the terminal bracket is in front of the hose reel. Check the clearance between the reel and bracket. It must NOT be less than 1.00 inch. SLOWLY tilt the mast back watching for interference with the overhead guard, Cab, or any other obstruction. The reel should pass no closer than 1.00 inch of any obstruction to avoid creating a pinch or shear safety concern. If necessary reposition the reel and terminal bracket.

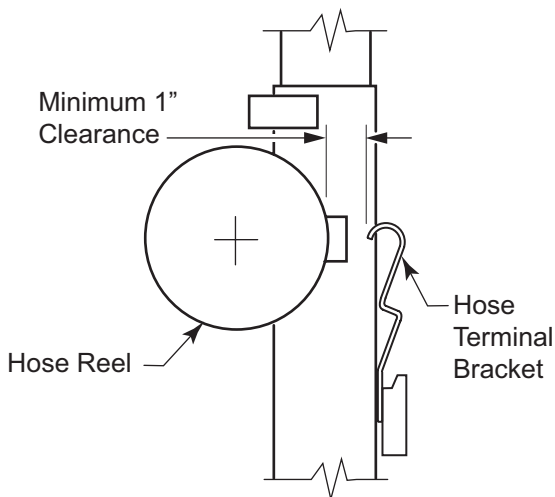


Figure 2-8

- Remove the hose reel from the mounting bracket using a 9/16" wrench. There are two small o-rings between the end of the reel shaft and mounting bracket. Save the o-rings for re-use. Protect the end of the reel shaft with tape.

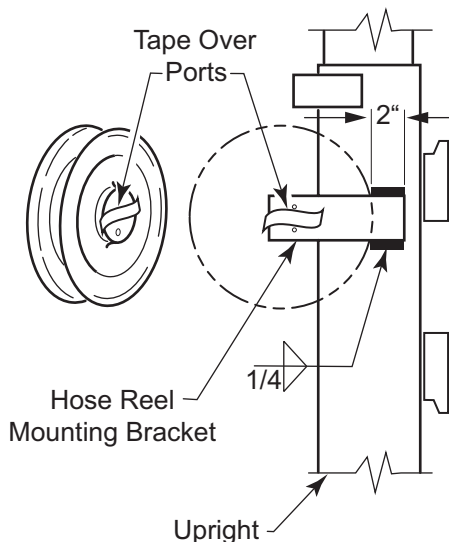


Figure 2-9

- Protect the exposed (unpainted) surface on the mounting bracket with tape. Insure the fittings are in place and their caps are on tight. Finish weld the mounting bracket onto the mast. Finish weld the bracket to the truck carriage. Paint as required.
- Re-install the reel by first removing the protective tape from the reel mounting bracket and end of the reel shaft. Inspect to insure the ports are clean and free of debris. Seat the o-rings in the end of the shaft. (Hint: A little oil will help hold the o-ring in place while assembling.) Re-install the reel to the mounting bracket. Be sure the lock washers are in place and torque to 25-30 foot pounds.

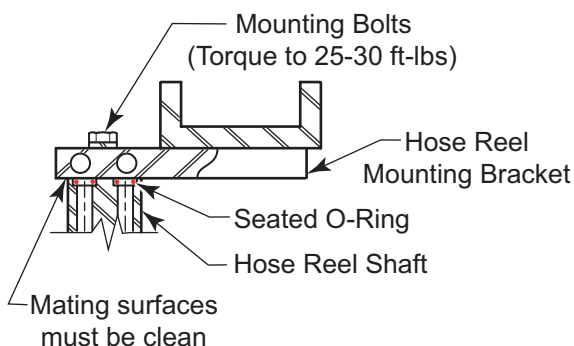


Figure 2-10

- Install bulkhead fittings to the terminal bracket. Both fittings should be installed with the locknuts on the underside.

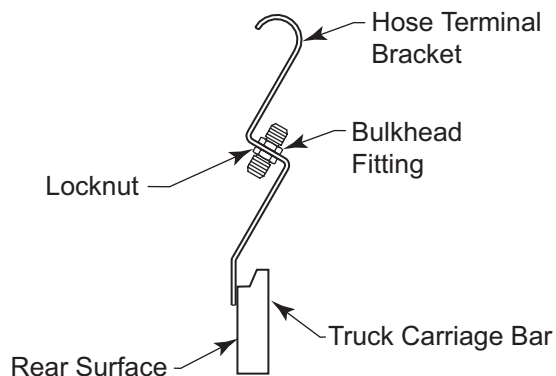


Figure 2-11

- Pretension the hose reel by rotating forward from the top for two (2) full turns. Note: The reels will remain fully wrapped on the reel during this procedure. Holding the tension on the spring, clip the tie wrap holding the hoses and pull the hose ends down to the terminal bracket and attach to the bulkhead fittings. A 7/8" wrench is needed to tighten the hose ends.

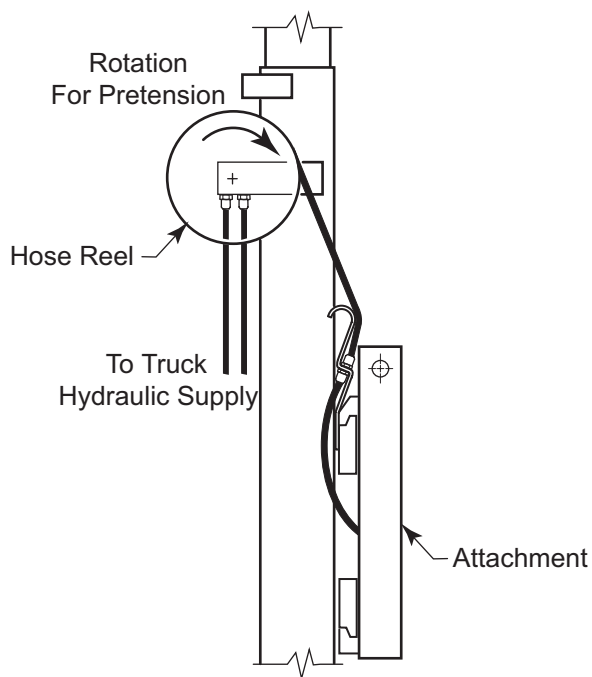


Figure 2-12

- Install the header hoses from the truck valve to the hose reel mounting bracket. Some hose reel kits include these hoses and re-useable fittings. Note: Maximum operating pressure is 2500 psi.

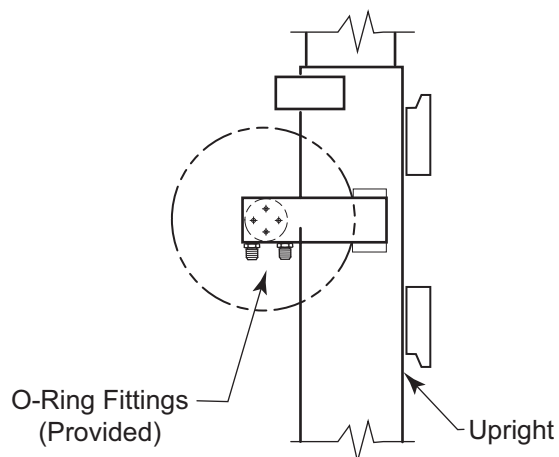
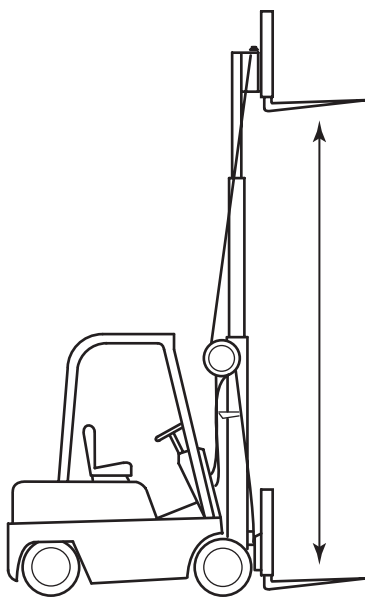


Figure 2-13

11. Install the jumper hoses from the terminal bracket to the attachment. Jumper line hose kits are available for most attachments and can be found listed in the attachment price book as an option for the attachment.



12. Double check to insure all hose connections are tight. Operate the Hydraulic supply and check for leaks. SLOWLY raise the mast to full extension and lower checking for interference and rub points. Again check for leaks.

The installation of your hose reel is now complete.

For service and parts information call 1-800-285-7000

