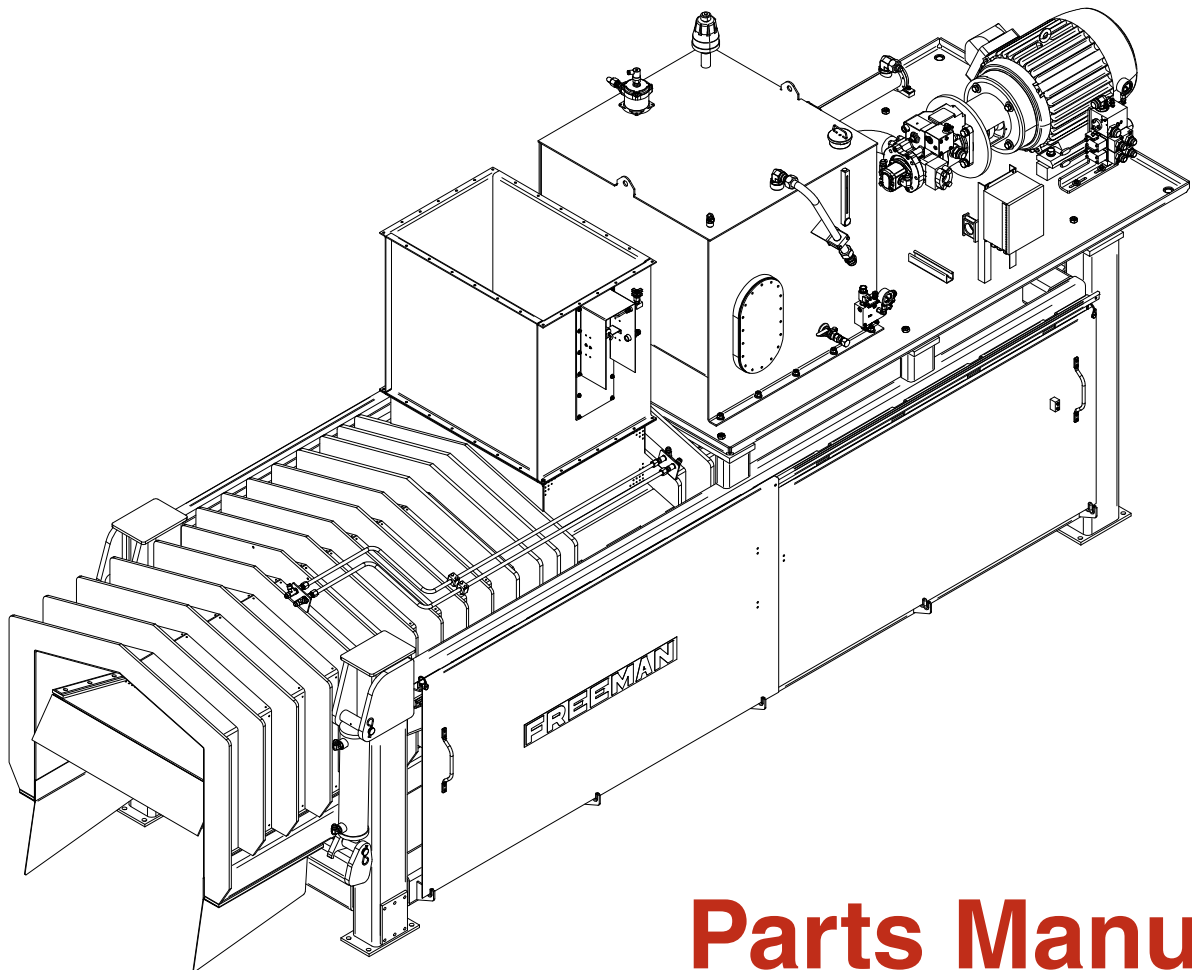


FREEMAN



Parts Manual

Model WE-5 Water Extractor

Starting in 2021 with Serial Number:
ASC-0WE5-507



WARNING

California Proposition 65 Warning

Diesel engine exhaust and some of its constituents are known to the State of California to cause cancer, birth defects, and other reproductive harm.

Battery posts, terminals and related accessories contain lead and lead compounds, chemicals known to the State of California to cause cancer, birth defects, and other reproductive harm. Wash hands after handling.

Other chemicals in this vehicle are also known to the State of California to cause cancer, birth defects, and other reproductive harm.



Section 0 General Information

Section	Page Number
Introduction	0-3
Safety.....	0-3
Serial Number Location	0-8
Table of Contents.....	0-9

This page is intentionally left blank.

Introduction

This manual contains all components of the water extractor that can be separately identified as well as parts necessary for equipment support. You can find the parts page relevant to your project in either the Table of Contents (Page 0-9)

Illustrations

Illustrations are provided whenever possible to represent component parts and the mounting location of those parts. The numbered labels correspond to the item numbers in the parts list.

Parts Lists

Component parts lists are presented in a 5-column format:

Item: Index numbers found in this column correspond to the numbers found on the respective parts location illustration. Some items are shown for reference purposes only to illustrate their relationship to other systems.

Notes: This column identifies footnotes applicable to specified items.

Part Number: This column lists the Allied Systems Company Part Number.

Quantity: This column lists the total number of a specific item required per assembly or subassembly. This number may not necessarily be the number of items used in the end item or system. Only one set of components is listed whenever the components of two assemblies are the same.

“A/R” (as required) identifies bulk items whose

length or other dimension must be specified when requisitioning.

“Ref” identifies items shown for reference purposes only to illustrate their relationship to other systems.

“NSS” (not sold separately) identifies items such as valve housings and spools, ring gears and pinions, etc., which must be ordered as a set because they are closely mated at manufacture.

Description: This column lists the item nomenclature along with those modifiers necessary to identify the item. Additionally, cross references for repairable subassemblies are listed in this column. One dot preceding the description indicates that the item is a component part of the previously listed item or assembly with no dot. Two dots indicate that the item is part of the previously listed item with one dot.

Example:

Engine Installation
. Engine Assembly
. . Manifold Assembly
. . Control Box Assembly
. . . Module Assembly

The Engine Assembly is a first level subassembly of the Engine Installation as indicated with one dot. The Manifold Assembly and the Control Box Assembly are second level components of the Engine Assembly as indicated by the two dots. The Module Assembly is a third level component of the Control Box Assembly which is indicated with three dots.

Safety

“THE BEST SAFETY DEVICE IS A CAREFUL OPERATOR”

General

The following pages contain general safety warnings which supplement specific warnings and cautions that can be found in the operators manual (PB000WE521) that is included with this unit. All Freeman manuals can also be found online at www.alliedsystems.com. All electrical and hydraulic equipment is potentially hazardous. You must thoroughly review and understand this safety section before attempting to operate, troubleshoot, maintain or service this water extractor.

Time, money and effort have been invested in making your water extractor a safe product. The dividend from this investment is **YOUR PERSONAL SAFETY**.

However, it must be realized that no power-driven equipment can be any safer than the person behind the controls. If you don't operate and maintain your Freeman water extractor safely, our efforts will have been in vain.

The safety instructions and warnings, as documented in this manual and operators manual shipped with the machine, provide the most reliable procedures for the safe operation and maintenance of your water extractor. It's your responsibility to see that they are carried out.

Allied Systems Company cannot anticipate all worksite conditions, local regulations, etc. It is the responsibility of the end user to be aware of and obey any specific worksite, local, state, or national regulations or procedures that are applicable to operating this water extractor.

NOTE: All possible safety hazards cannot be anticipated so as to be included in this manual. Therefore, you must always be alert to potential hazards that could endanger personnel and/or damage the equipment.

Safety Symbols

The following symbols/terms are used to emphasize safety precautions and notices:



The “DANGER” symbol indicates a hazardous situation which, if not avoided, will result in death or serious injury. Carefully read the message that follows to prevent serious injury or death.



The “WARNING” symbol indicates a hazardous situation which, if not avoided, could result in death or serious injury. Carefully read the message that follows to prevent serious injury or death.



The “CAUTION” symbol indicates a hazardous situation which, if not avoided, could result in minor or moderate injury, or equipment damage. Carefully read the message that follows to prevent minor or moderate injury.



The “NOTICE” symbol alerts to a situation that is not related to personal injury but may cause equipment damage.

NOTE: ...

The term “NOTE” highlights operating procedures or practices that may improve equipment reliability and/or personnel performance, or to emphasize a concept.

Safety

Operation Warnings



WARNING

Warning: Failure to observe the following safety rules may result in extreme personal injury, dismemberment or death. It is the operator's responsibility to understand the proper and safe use of this water extractor.

Make sure that you read, understand, and obey all of the safety precautions and operating instructions in the operator's manual.

- Keep this operator's manual and the safety Card (Allied form #89-120) with the water extractor at all times.
- Do not operate the water extractor unless you are authorized and trained to do so. If it has been some time since you last operated the water extractor, re-familiarize yourself with the water extractor before starting, then proceed slowly.
- Do not attempt to service any equipment while the motor is running.
- Do not operate the water extractor if you are aware of any malfunctions, needed maintenance or repairs.
- Stop the water extractor immediately if any problems arise.
- Do not open or work on the in-feed system until the flow of material has been stopped and the water extractor motor has been turned off.
- Do not make any adjustments or reach under any load bearing surfaces while they are loaded.
- Inspection covers and safety shields should only be removed by authorized service persons.
- Never operate the water extractor without all safety shielding in place.
- Keep hands, feet, hair, jewelry and clothing away from moving parts.
- Avoid wearing loose clothing which can easily be caught in moving parts.
- Always use lights when working at night or in low light conditions.
- Know your job-site rules. Some have site-specific directions and procedures. The methods outlined in the operators manual provide a basis for safe operation of the water extractor. Because of special conditions, your company's procedures may be somewhat different from those shown in the operators manual.
- Do not start the water extractor if the key has been marked with a "DO NOT START" or "RED" tag.
- Alert personnel in the area before starting the water extractor, and make sure everyone is clear. Ensure that there are no loose tools on the unit
- Each country has its own safety legislation. It is in the operator's own interest to be conversant with these regulations and to comply with them in full. This also applies to local bylaws and regulations in force on a particular worksite.
- Should the recommendations in this manual deviate from those in the user' country, the national regulations should be followed.
- Never attempt to disconnect any of the safety devices built into the water extractor.

Safety

Hydraulic Hazards

Be aware of the hazards of pressurized hydraulics:

- Wear personal protective equipment, such as gloves and safety glasses, whenever servicing or checking a hydraulic system.
- Assume that all hydraulic hoses and components are pressurized. Relieve all hydraulic pressure before disconnecting any hydraulic line.
- Never try to stop or check for a hydraulic leak with any part of your body; use a piece of cardboard to check for hydraulic leaks.
- Small hydraulic hose leaks are extremely dangerous, and can inject hydraulic oil under the skin, even through gloves.
- Infection and gangrene are possible when hydraulic oil penetrates the skin. See a doctor immediately to prevent loss of limb or death.



Maintenance Safety

- Perform all routine maintenance outlined in this operator's manual in the time intervals indicated.
- Maintenance, lubrication and repair of this machine can be dangerous unless performed properly. In order to ensure safety, each person working on this water extractor must have the necessary skills, information, tools and equipment, and satisfy himself that his work method is safe, correct, and meets his own company's requirements.
- Do not attempt to make adjustments, or perform repairs unless you are authorized and qualified to do so.

- Never attempt to service energized equipment.
- Always shut off and secure power when servicing the water extractor.
- Disengage the water extractor and shut off power, and wait for all movement to stop before adjusting, lubricating, cleaning, or servicing the water extractor.
- Tag the key switch with a "DO NOT START" sign and/or remove the key.
- Always perform all maintenance and lubrication procedures with the water extractor on level ground.
- Any unauthorized modifications made to the water extractor by the customer or parties other than Allied Systems will relieve Allied Systems Company and your Freeman dealer of any liability for damage or injury.
- Replace any worn parts only with genuine Freeman parts. Call your dealer for assistance.
- Unless specified in service procedures, never attempt maintenance or lubrication procedures while the water extractor is turned on.
- Before making adjustments to the electrical system, disconnect the battery. An electrical spark could cause a fire, explosion or severe burns.



Safety

Safety Equipment

- Ensure test equipment is in good condition.
- If an instrument must be held while taking measurements, ground the case of the instrument before energizing equipment.
- Do not touch live equipment or personnel working on live equipment while holding a multimeter. Some types of measuring devices should not be grounded—do not hold such devices while taking measurements.
- Prevent personal injury or equipment damage by using a lifting device with a lifting capacity greater than twice the weight of any equipment to be lifted.
- Always use personal protective equipment (PPE) appropriate to the situation. This may include the use of hearing protection, eye protection, a respirator, a hard hat, leather gloves, steel toed boots, etc.



Electrical Hazards

- An electric shock could be fatal. Ensure power to the water extractor is “OFF” before opening electrical panels.
- All electrical cables and connectors must be in good condition (free of corrosion, damage, etc). Use caution in wet weather to avoid danger from electrical shock. Never attempt electrical testing or repair while standing in water.
- Do not wear electrically conductive jewelry, clothing, or other items while working on the electrical system.



Compressed Air Hazards

- When using compressed air to dry parts, pressure should not exceed 30 psi (200 kPa).
- Air pressure penetrating your skin can be fatal. Never direct compressed air at anyone.

Serial Number Location and Identification

Each Freeman Water Extractor is identified by means of a water extractor model number and serial number. As a further identification, all power units are provided with a serial number.

To ensure prompt, efficient service when ordering parts or requesting repairs from your authorized Freeman dealer, record the serial numbers in the spaces provided.

WATER EXTRACTOR SERIAL NUMBER _____

Front of water extractor frame under electric motor.

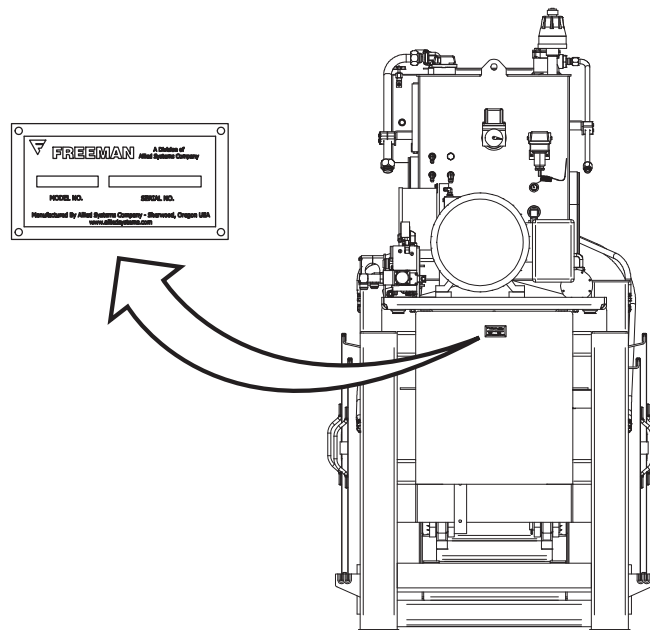
POWER UNIT SERIAL NUMBER

Electric Motor- _____

Left side, near connection box.

NOTE:

The motor and pump end is considered the front of the water extractor. The sides are described as left-hand side and right-hand side as viewed from behind while facing the discharge end of the water extractor.



Starting with ASC-0WE5-507

Table of Contents

Section 1	Main Assembly
Water Extractor Assembly (WE5).....	1-3
. Main Frame	1-8
. Restriction Rail.....	1-13
. Infeed Chute Assembly	1-15
. Plunger & Main Cylinder	1-16
. Main Cylinder Assembly.....	1-18
Section 2	Hydraulic/Power System
Hydraulic Power Unit (WE5).....	2-3
. Hydraulic Tank Assembly	2-6
. Junction Box Assembly	2-8
Restriction Rail Cylinder.....	2-10
Hoses and Fittings	2-11
Section 3	Electrical System
Electrical System.....	3-3
. Control Panel (IQAN)	3-4
Junction Box.....	See Section 2(Hydraulic/Power System)

This page is intentionally left blank.

Section 1

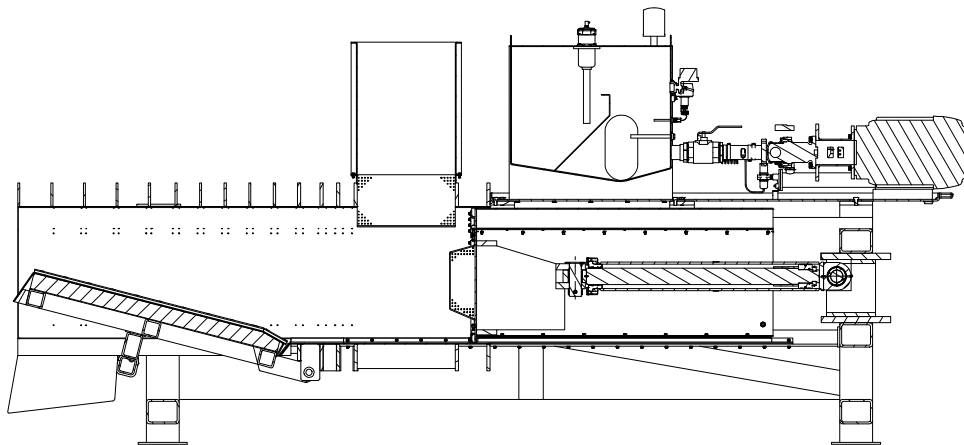
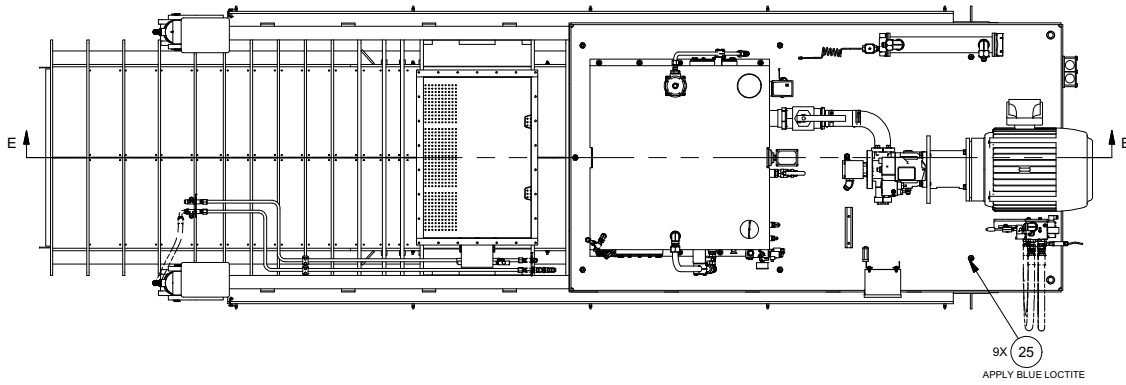
Main Assembly

Water Extractor Assembly (WE5).....	1-3
. Main Frame	1-8
. Restriction Rail.....	1-13
. Infeed Chute Assembly	1-15
. Plunger & Main Cylinder	1-16
. Main Cylinder Assembly.....	1-18

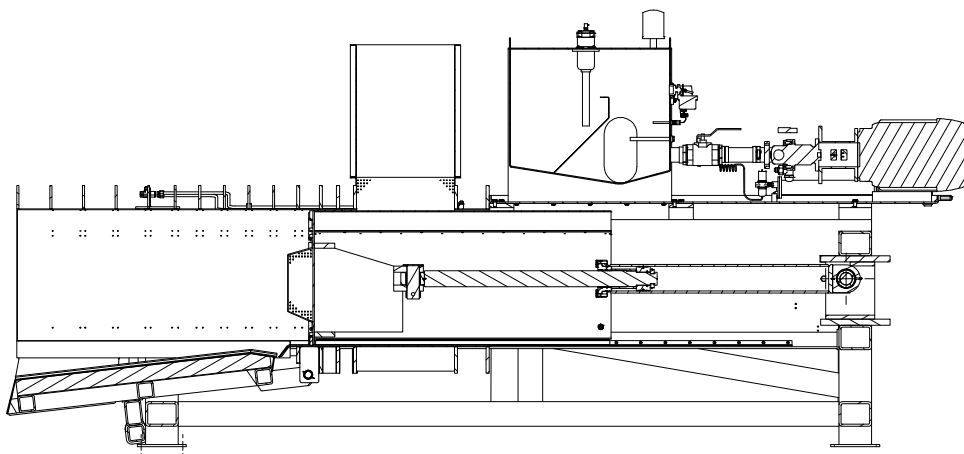
This page is intentionally left blank.

Water Extractor Assembly (WE5)

Page 1 of 5



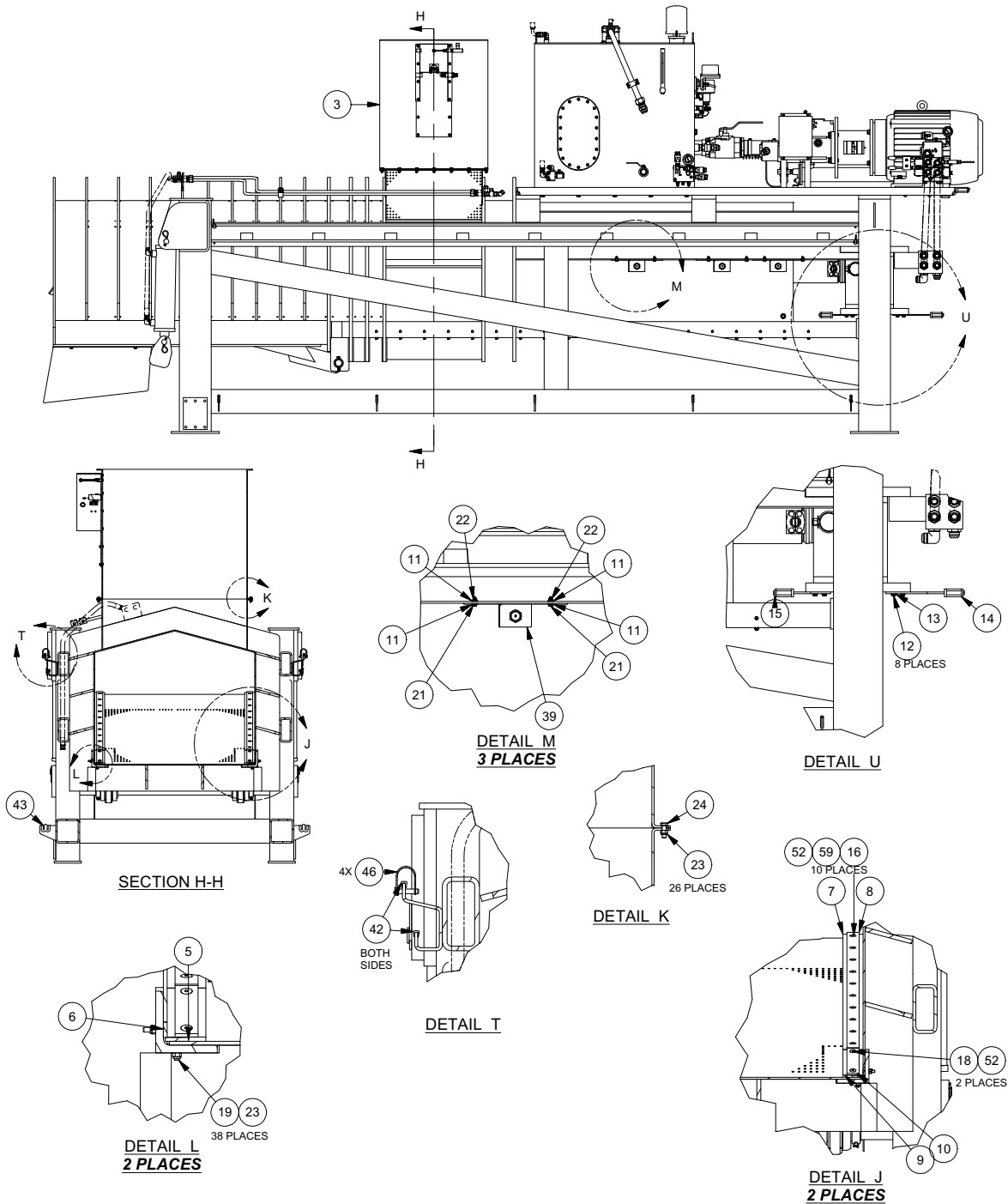
SECTION E - PLUNGER FULLY RETRACTED & RESTRICTION RAIL FULLY RAISED



SECTION E PLUNGER FULLY EXTENDED & RESTRICTION RAIL FULLY LOWERED

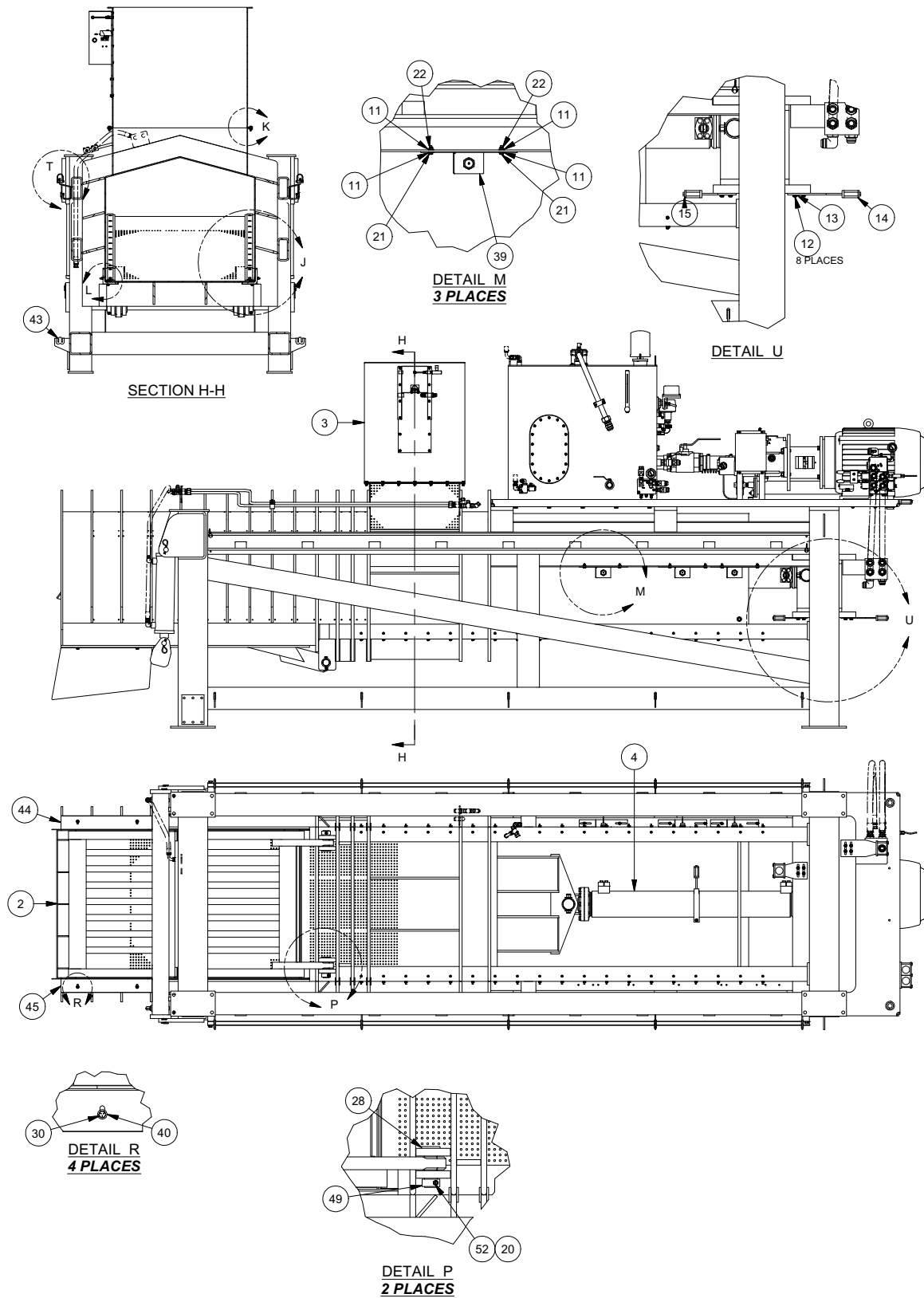
Water Extractor Assembly (WE5)

Page 2 of 5



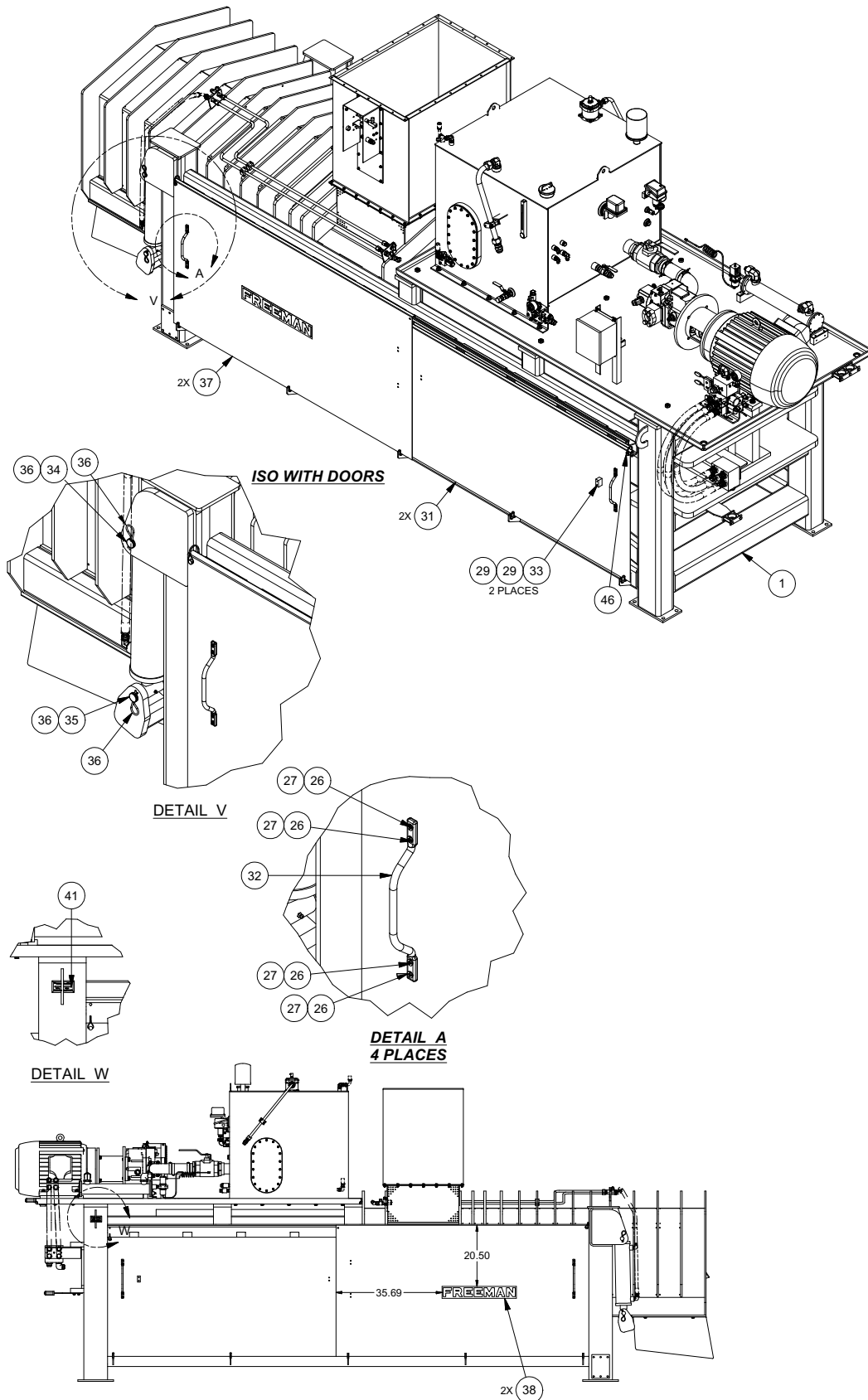
Water Extractor Assembly (WE5)

Page 3 of 5



Water Extractor Assembly (WE5)

Page 4 of 5



Water Extractor Assembly (WE5)

Page 5 of 5

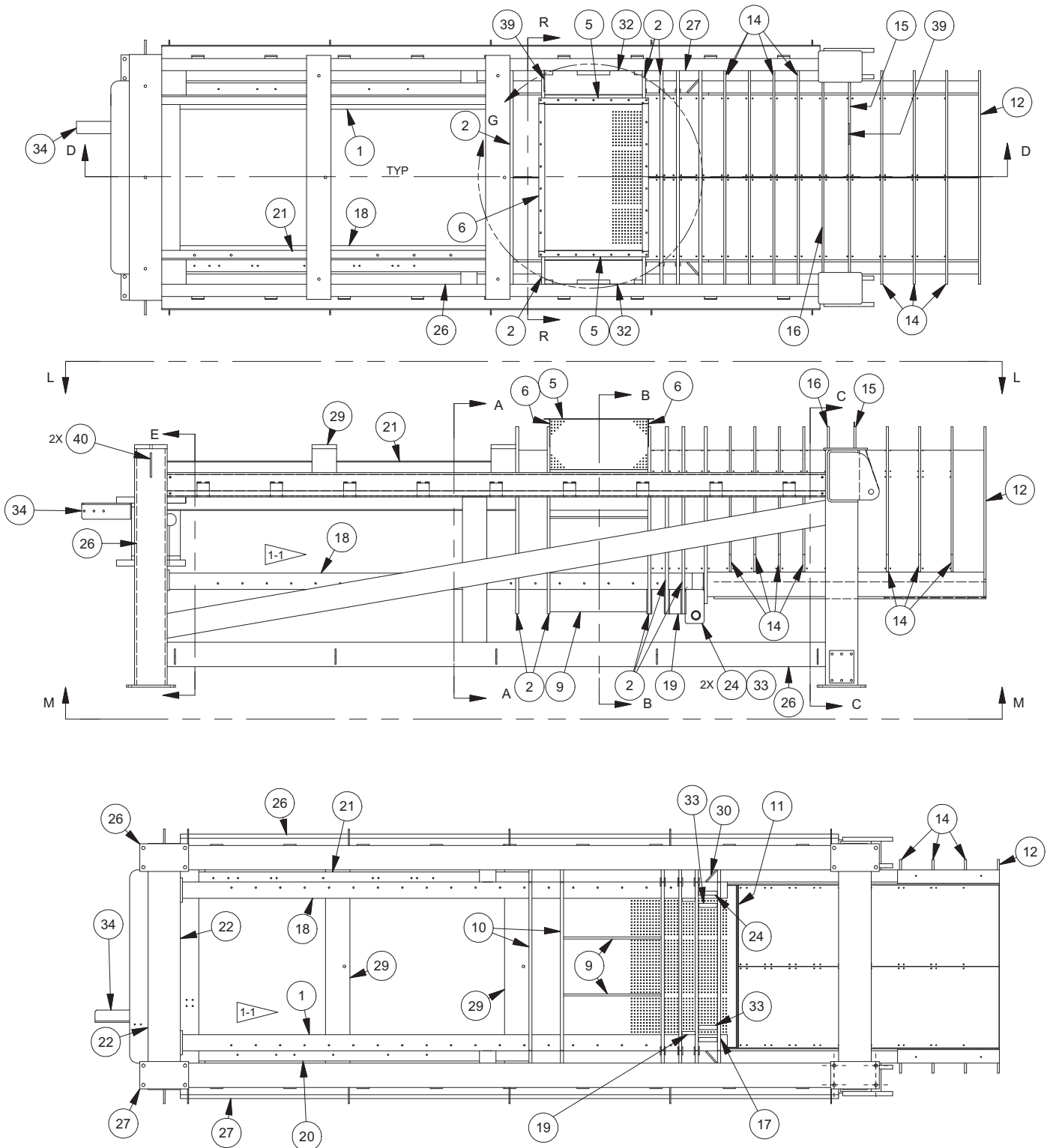
Item	Part No.	Qty	Description	Item	Part No.	Qty	Description
902763 Water Extractor Assembly (WE5)							
1	* 902753	1	. Frame, Main	30	16597W	4	. Capscrew
2	** 900965	1	. Restriction Rail	31	902764	2	. Plate, Inner Door
3	*** 903162	1	. Chute Assembly, Infeed	32	HAN0000817	4	. Handle, Grab
4	**** 903315	1	. Plunger/Main Cylinder Assembly	33	901651	2	. Block, Stop
11	233882	12	. Flat Washer	37	901648	2	. Plate, Outer Door
12	16805W	8	. Capscrew	38	FD00007111	2	. Decal
13	221767W	8	. Washer	39	903491	3	. Plate, Mounting
14	906831	1	. Bracket, Front	40	Y27E-06	4	. Washer
15	906832	1	. Bracket, Rear	41	NP00000100	1	. Plate
21	236715	6	. Capscrew	42	254617 647IN	1	. Guide Rail
22	234170	6	. Nut, Nylock	43	225871	5'	. Trim, Edge
23	228461	26	. Nut, Nylock	44	902467	1	. Plate, RH
24	234129	26	. Capscrew	45	902466	1	. Plate, LH
25	169337W	9	. Capscrew	46	PIN0375125	4	. Snapper Pin
26	237671	16	. Capscrew	53	244112	3	. Sensor, Proximity
27	228413	16	. Hex Nut	54	903231	1	. Manifold, Combiner
29	133469W	4	. Capscrew				

- * See Seperate Coverage (See Page 1-8)
- ** See Seperate Coverage (See Page 1-13)
- *** See Seperate Coverage (See Page 1-15)
- **** See Seperate Coverage (See Page 1-16)

Rev G

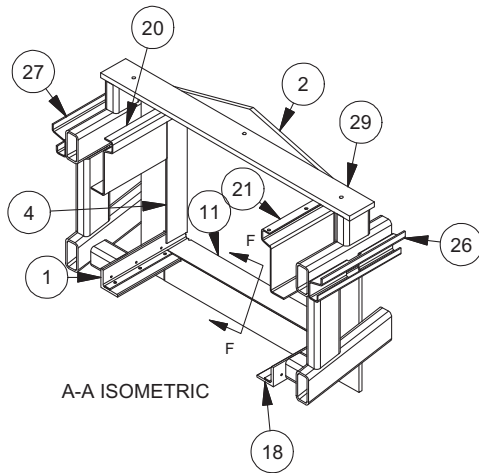
Main Frame

Page 1 of 5

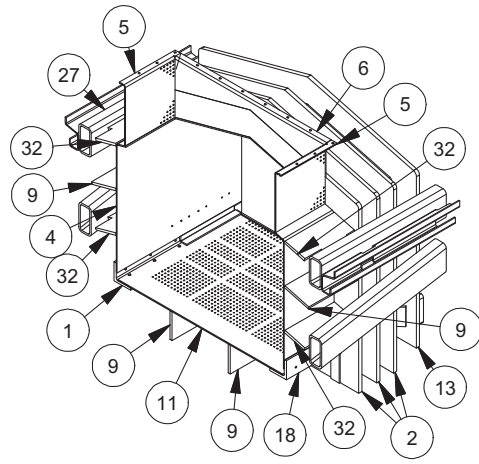


Main Frame

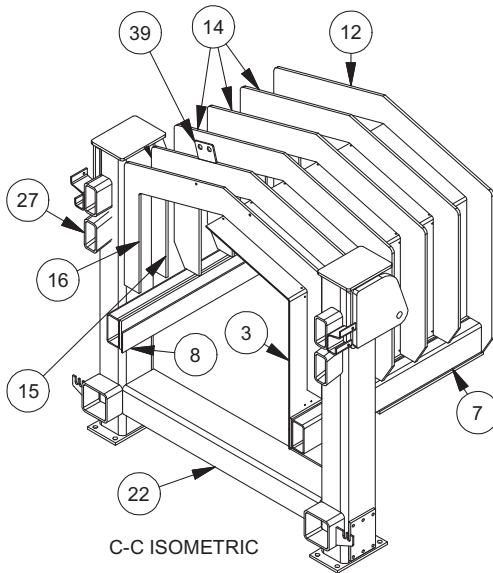
Page 2 of 5



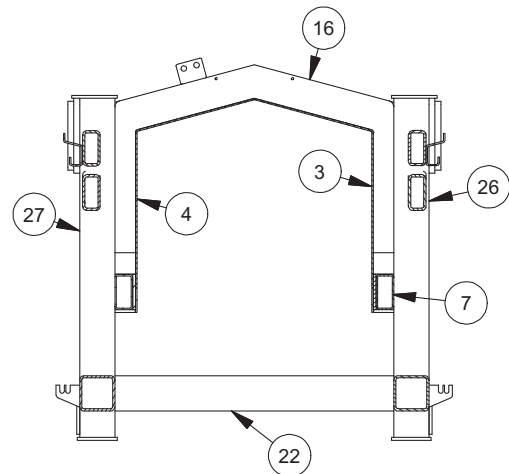
A-A ISOMETRIC



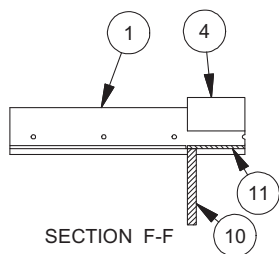
B-B ISOMETRIC



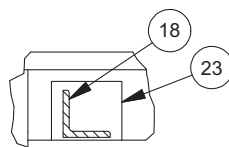
C-C ISOMETRIC



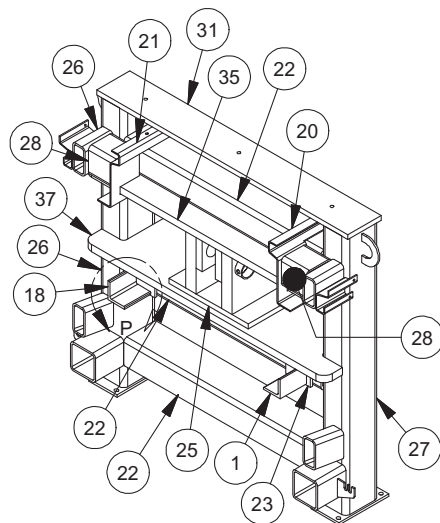
SECTION C-C



SECTION F-F



DETAIL P
2 PLACES



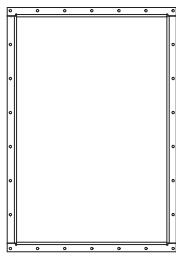
E-E ISOMETRIC

Main Frame

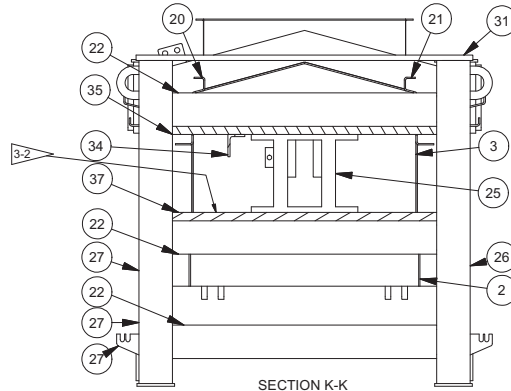
Page 3 of 5

CYLINDER MOUNT ASSY. INSTRUCTION:

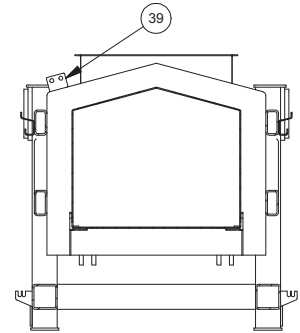
- 3-1 - LOCATE ITEM (35) 900885 TOP PLATE & TACK
- 3-2 - LOCATE ITEM (37) 906643 BOTTOM PLATE & TACK TAPPED HOLES LOCATED ON BOTTOM
- 3-3 - LOCATE ITEM (25) 901602 CYL. MNT. ASSY & TACK.
- 3-4 - WELD AFTER ITEMS 25, 35 & 37 ARE SET.



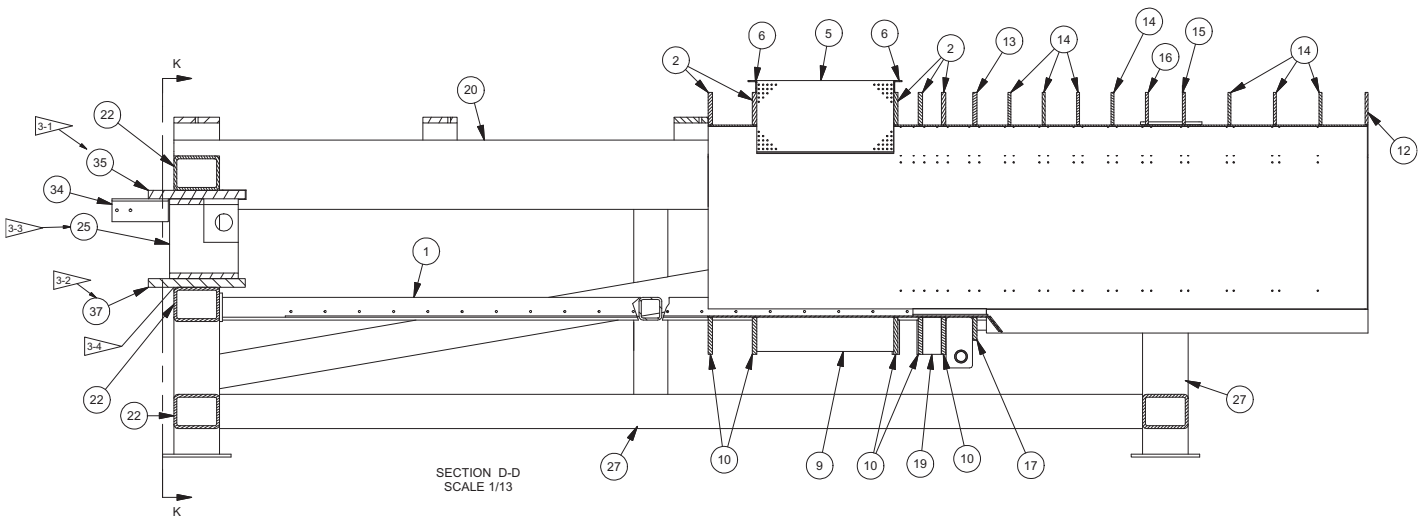
DETAIL G



SECTION K-K



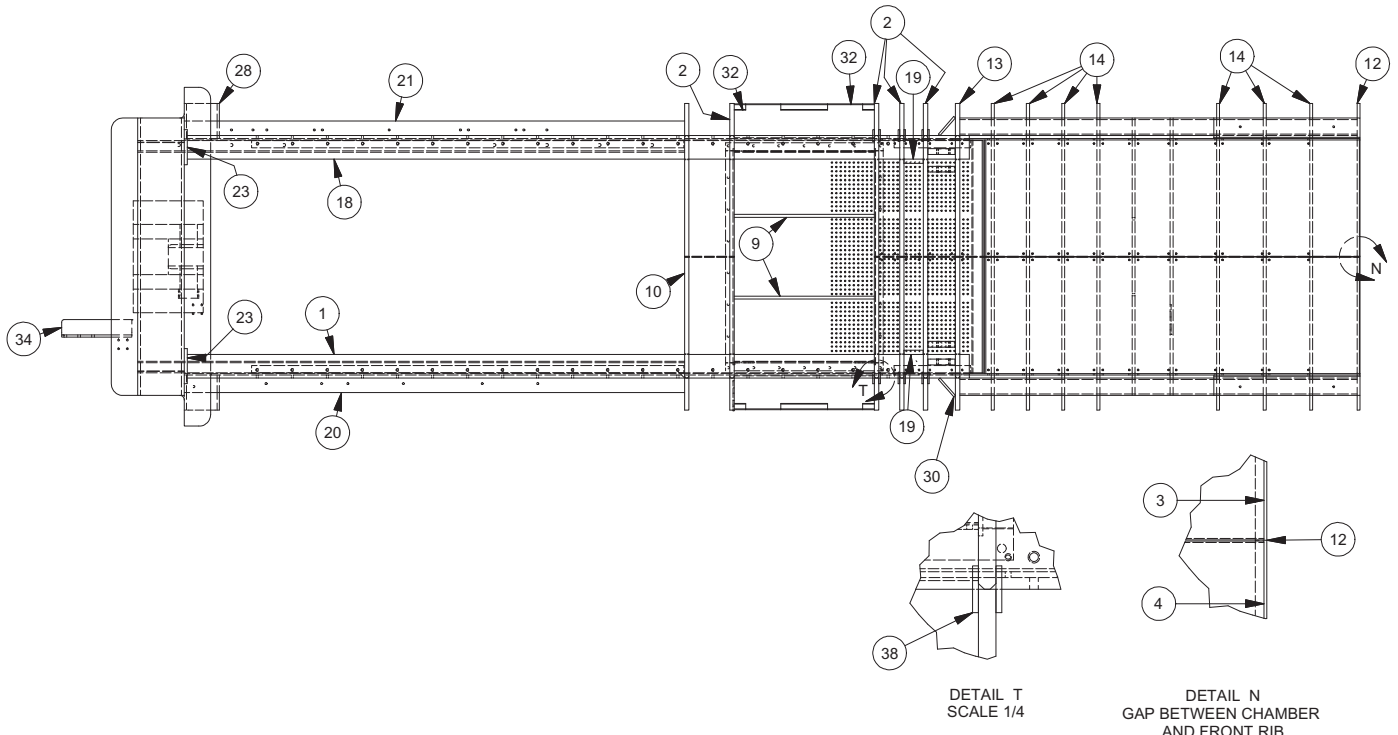
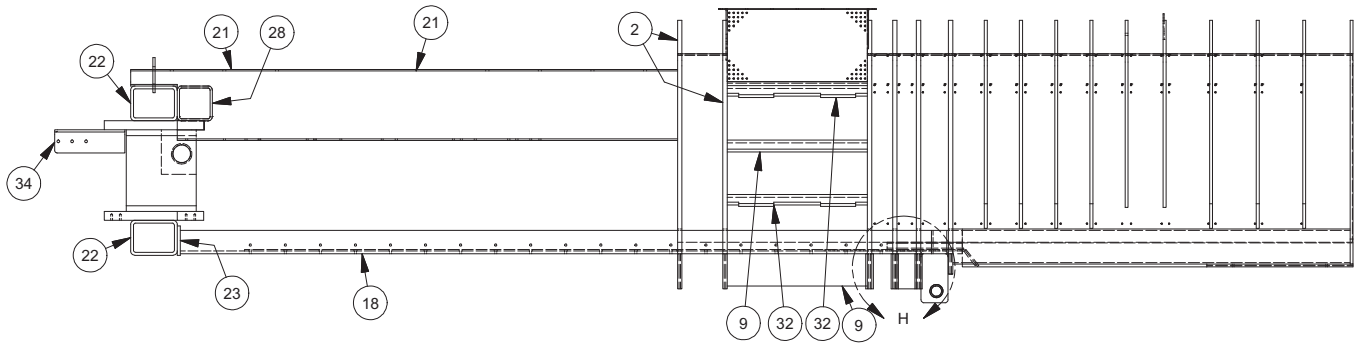
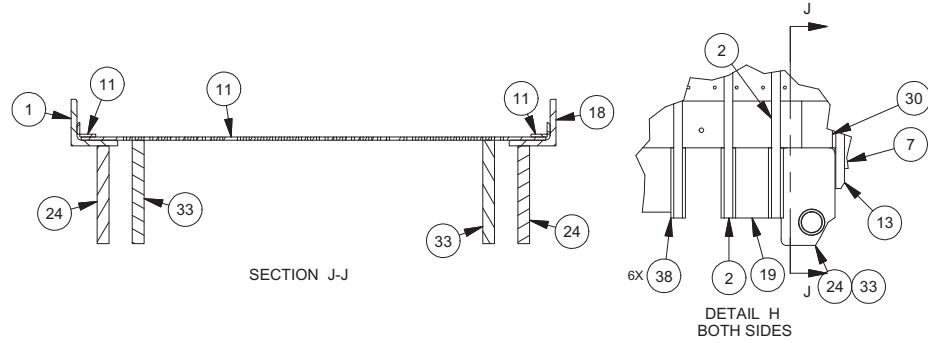
SECTION R-R



SECTION D-D
SCALE 1/13

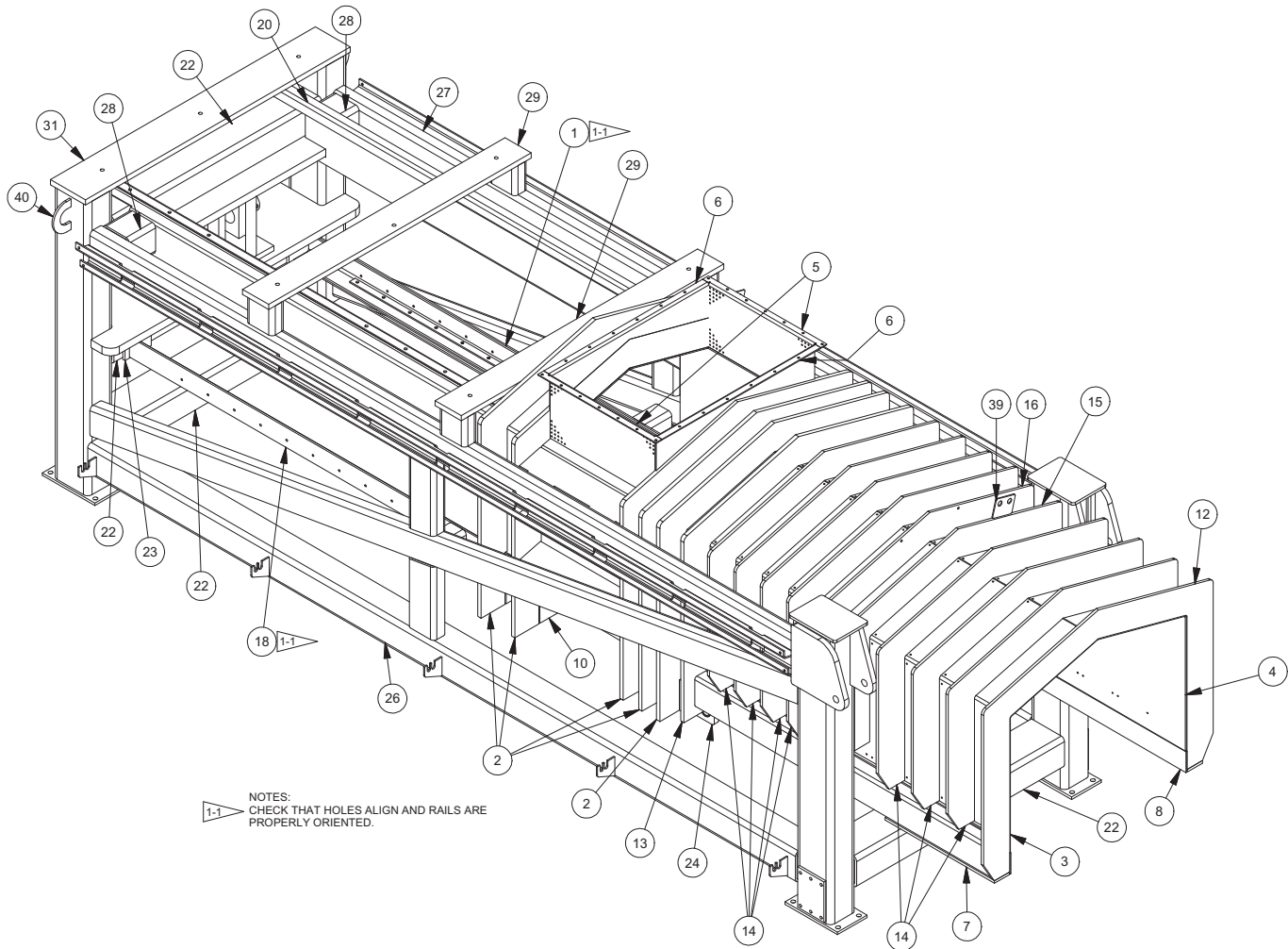
Main Frame

Page 4 of 5



Main Frame

Page 5 of 5

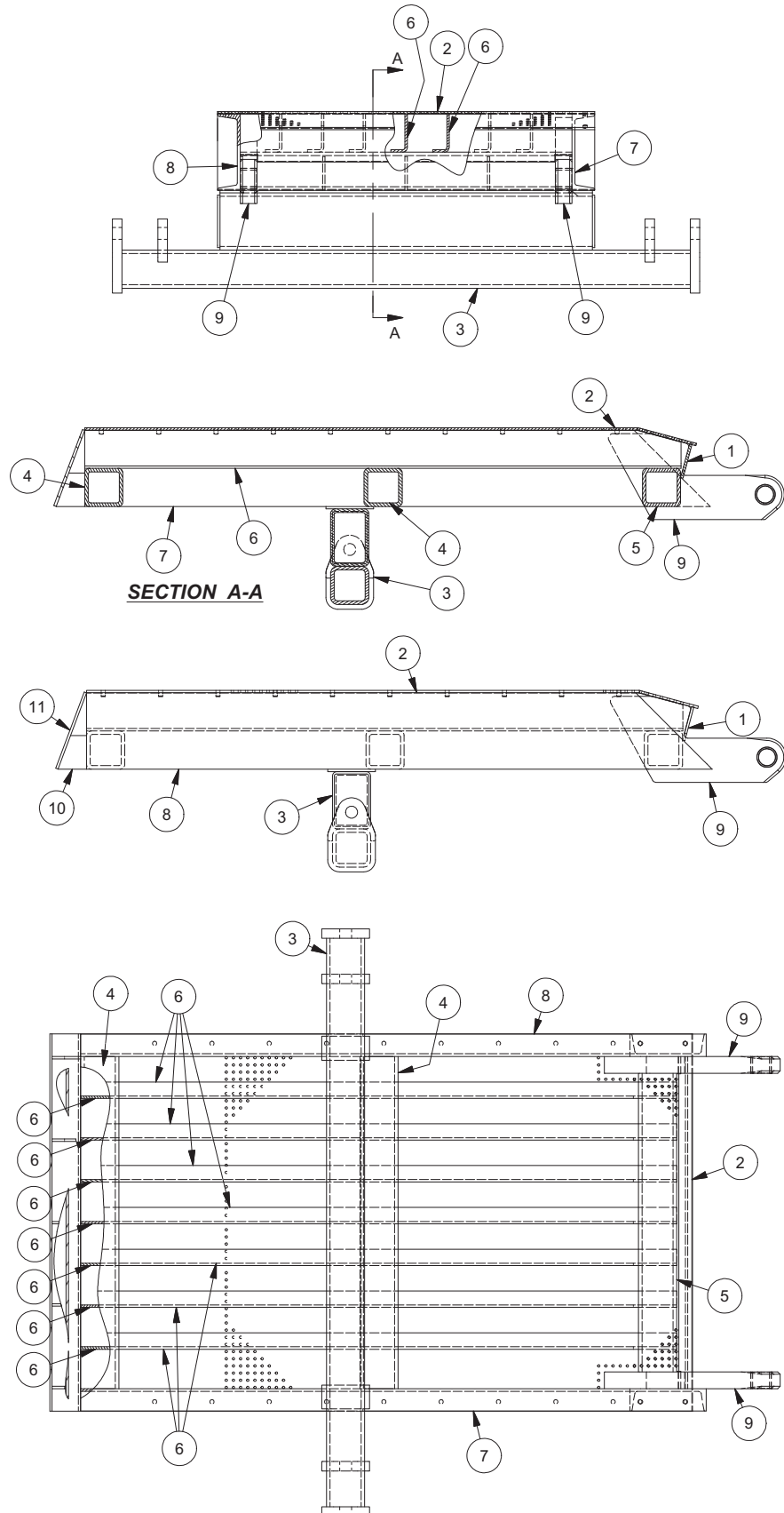


Item	Part No.	Qty	Description	Item	Part No.	Qty	Description
902753 Main Frame							
1	901190	1	. Angle, RH Bottom	22	901147	4	. Tube
2	900914	5	. Plate, Rib	23	900938	2	. Plate
3	900916	1	. Plate, LH	24	901320	2	. Pivot Assembly, Outer
4	900917	1	. Plate, RH	25	901602	1	. Mounting Weldment
5	900918	2	. Plate, Mounting	26	902735	1	. Truss, LH
6	900919	2	. Plate, Mounting	27	902736	1	. Truss, RH
7	902477	1	. Tube Section, LH	28	901026	2	. Tube, Sq
8	902461	1	. Tube Section, RH	29	901661	2	. Support
9	900921	4	. Bar	30	901789	2	. Plate
10	900915	5	. Bar, Bottom	31	902754	1	. Plate, Support
11	900932	1	. Chamber Plate, Bottom	32	902757	4	. Plate, Rib
12	900939	1	. Plate, Rib	33	902921	2	. Pivot Assembly, Inner
13	900936	1	. Plate, Rib	34	903232	1	. Bracket
14	900937	7	. Plate, Rib	35	900885	1	. Plate, Mounting
15	900940	1	. Plate, Rib	37	906643	1	. Plate, Cylinder Mt Top
16	900941	1	. Plate, Rib	38	906800	12	. Strap
17	900931	1	. Bar, Btm	39	901753	2	. Bracket
18	901188	1	. Angle, LH Bottom	40	551016	2	. Lifting Eye
19	901388	2	. Plate				
20	901196	1	. Plate, RH Front				
21	901194	1	. Plate, LH Front				

Rev E

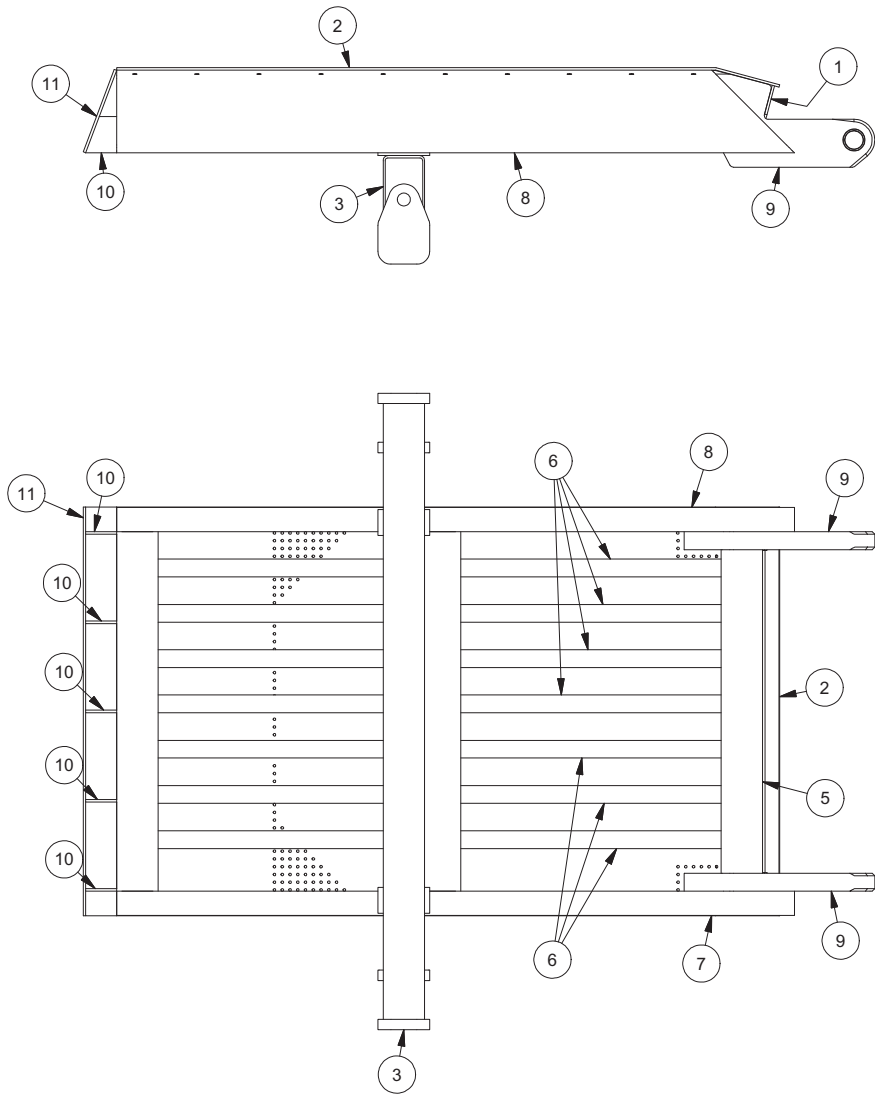
Restriction Rail

Page 1 of 2



Restriction Rail

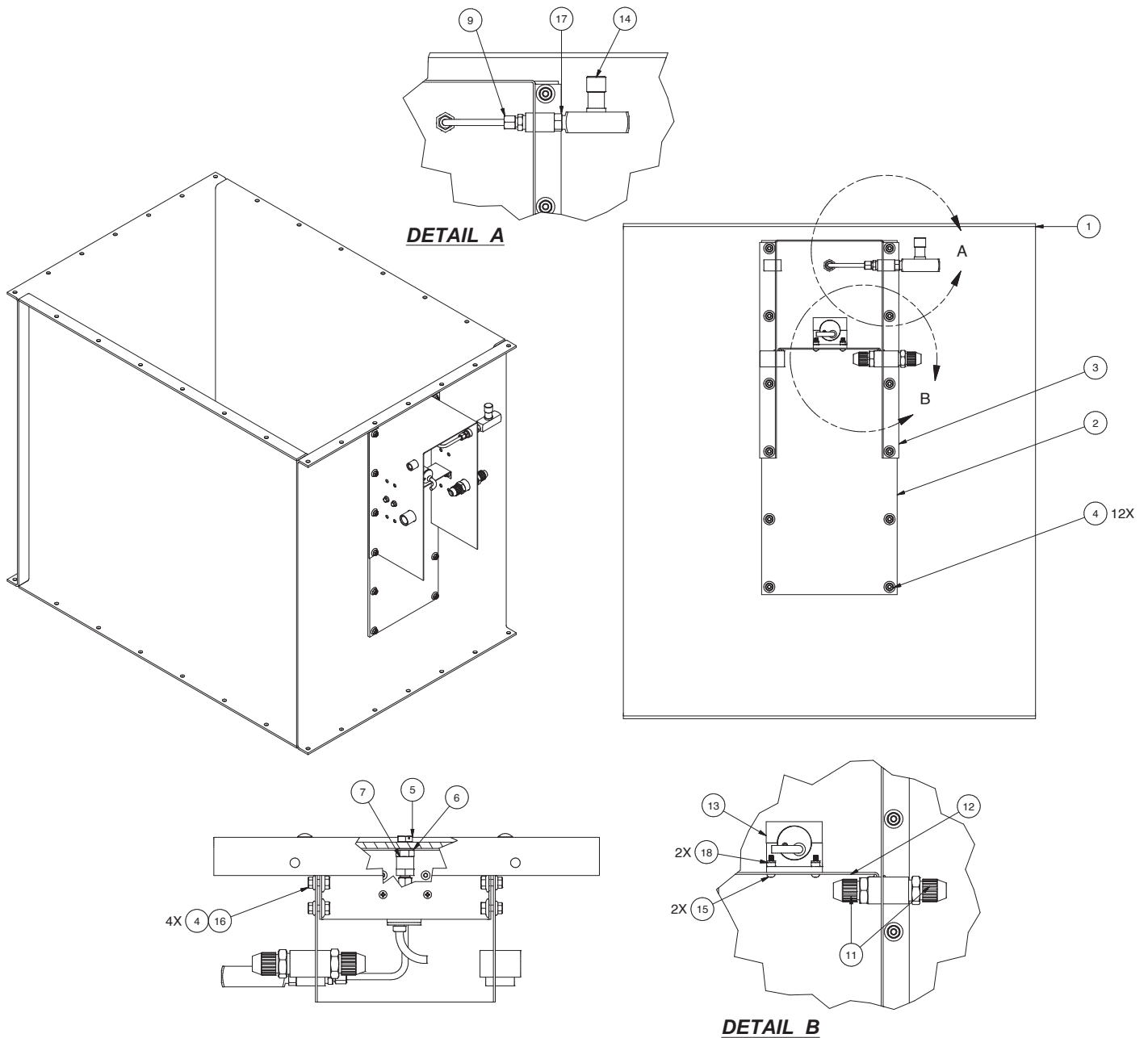
Page 2 of 2



Item	Part No.	Qty	Description	Item	Part No.	Qty	Description
	900965		Restrictor Rail				
1	900961	1	. Closure Plate	7	DRW2175900	1	. LH Channel
2	900958	1	. Top	8	DRW2175901	1	. RH Channel
3	900962	1	. Cylinder Mount	9	901185	2	. Pivot Assembly
4	900959	2	. Tube	10	902171	5	. End Gusset Plate
5	900960	1	. Tube	11	902783	1	. Plate
6	DRW0021764	7	. Support Plate				

Rev D

Infeed Chute Assembly



Item	Part No.	Qty	Description	Item	Part No.	Qty	Description
	903162		Chute Assembly, Infeed				
1	900923	1	. Infeed Chute	12	BKT0023959	1	. Bracket
2	WND0024498	1	. Window	13	254163	1	. Sensor, Prox
3	BKT0026116	1	. Sensor Mounting	14	VLV0000400	1	. Needle Valve
4	09416918	16	. Nut, Serrated	15	238892	2	. Screw, Machine
5	VLV0026113	1	. Capscrew	16	SMS0000173	4	. Screw, Ser Flg
6	204389	1	. Seal	17	221280	1	. Fitting
7	BSH0026123	1	. Fitting	18	R13812442	2	. Locknut
9	TBE0261300	1	. Tube Assembly				
11	27663	2	. Connector, Cord				

Rev B

Plunger and Main Cylinder

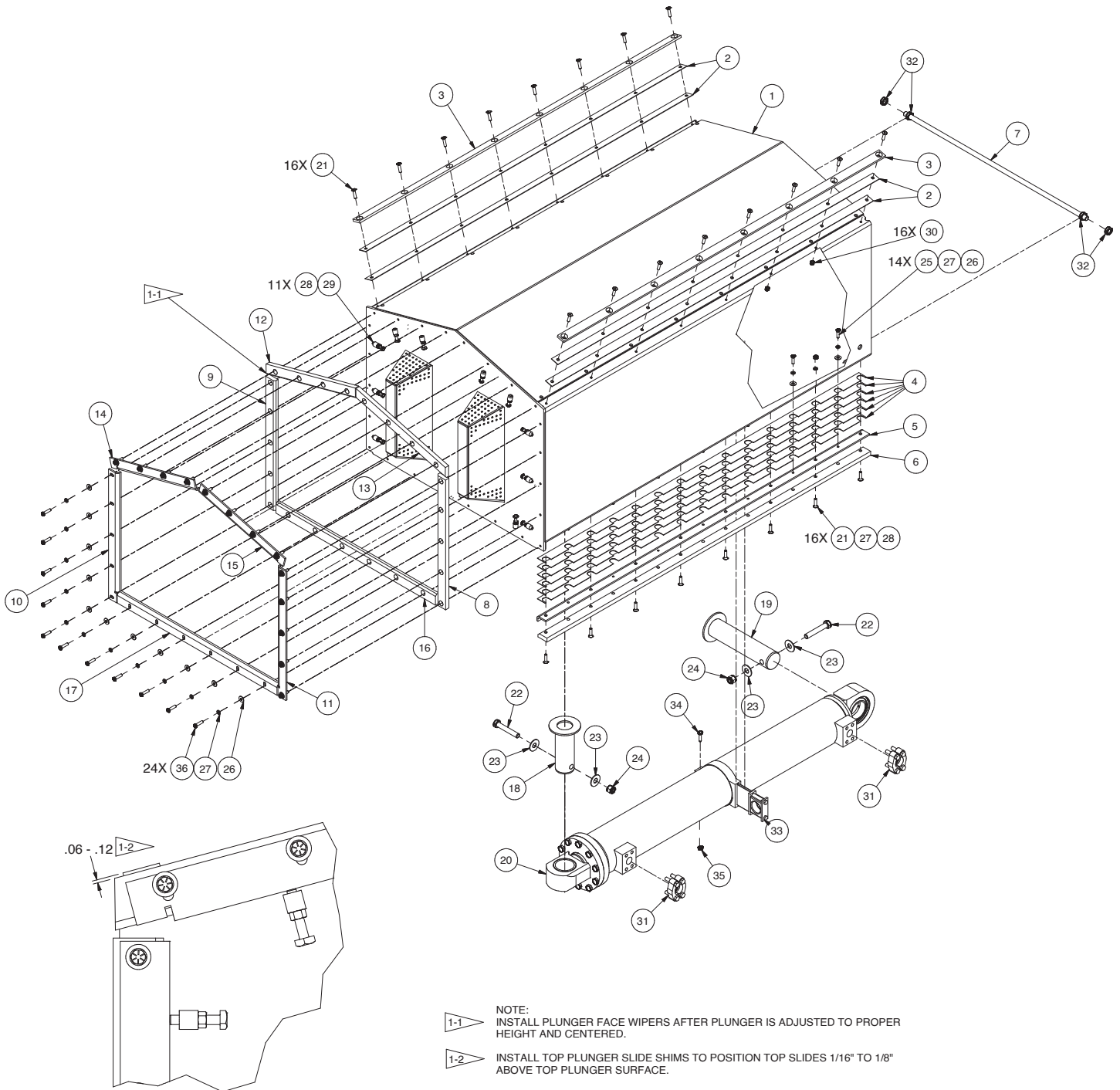
Page 1 of 2

Item	Part No.	Qty	Description	Item	Part No.	Qty	Description
	903315		Plunger & Main Cylinder				
1	900194	1	. Plunger Frame	22	SCCS000812	2	. Hex Bolt
2	902892	4	. Plate, Shim	23	234173	4	. Washer
3	PLG0021900	2	. Slide, Top Plunger	24	233852	2	. Nut, Esna
4	SHM0021922	12	. Shim	25	SCCS000303	14	. Hex Bolt
5	PLG0025903	2	. Plate, Backup	26	231853	38	. Washer
6	PLG0021920	2	. Slide, Bottom Plunger	27	233569	54	. Washer
7	901016	1	. Rod	28	NCHS000375	30	. Hex Nut
8	901027	1	. Wiper	29	SQSS375200	14	. Set Screw
9	901028	1	. Wiper	30	231851	16	. Nut, Esna
10	901029	1	. Plate, Backup (LH)	31	229449	2	. Kit, Split Flange
11	901030	1	. Palte, Backup (RH)		203446	1	. O-Ring
12	901031	1	. Wiper		225328	2	. Clamp Half
13	901032	1	. Wiper		230961	4	. Capscrew
14	901033	1	. Plate, Top (LH)	32	238529	4	. Jam Nut
15	901034	1	. Plate, Top (RH)	33	903353	1	. Clamp
16	901056	1	. Wiper	34	SMS0000180	1	. Screw
17	901057	1	. Plate, Btm	35	09411507	1	. Nut
18	901099	1	. Pin , Pivot	36	SCCS000304	24	. Hex Bolt
19	901604	1	. Pin , Pivot				
20	* 901156	1	. Main Cylinder Assembly				* See Seperate Coverage (See Page 1-18)
21	SMFS000304	32	. Screw, Machine				

Rev C

Plunger and Main Cylinder

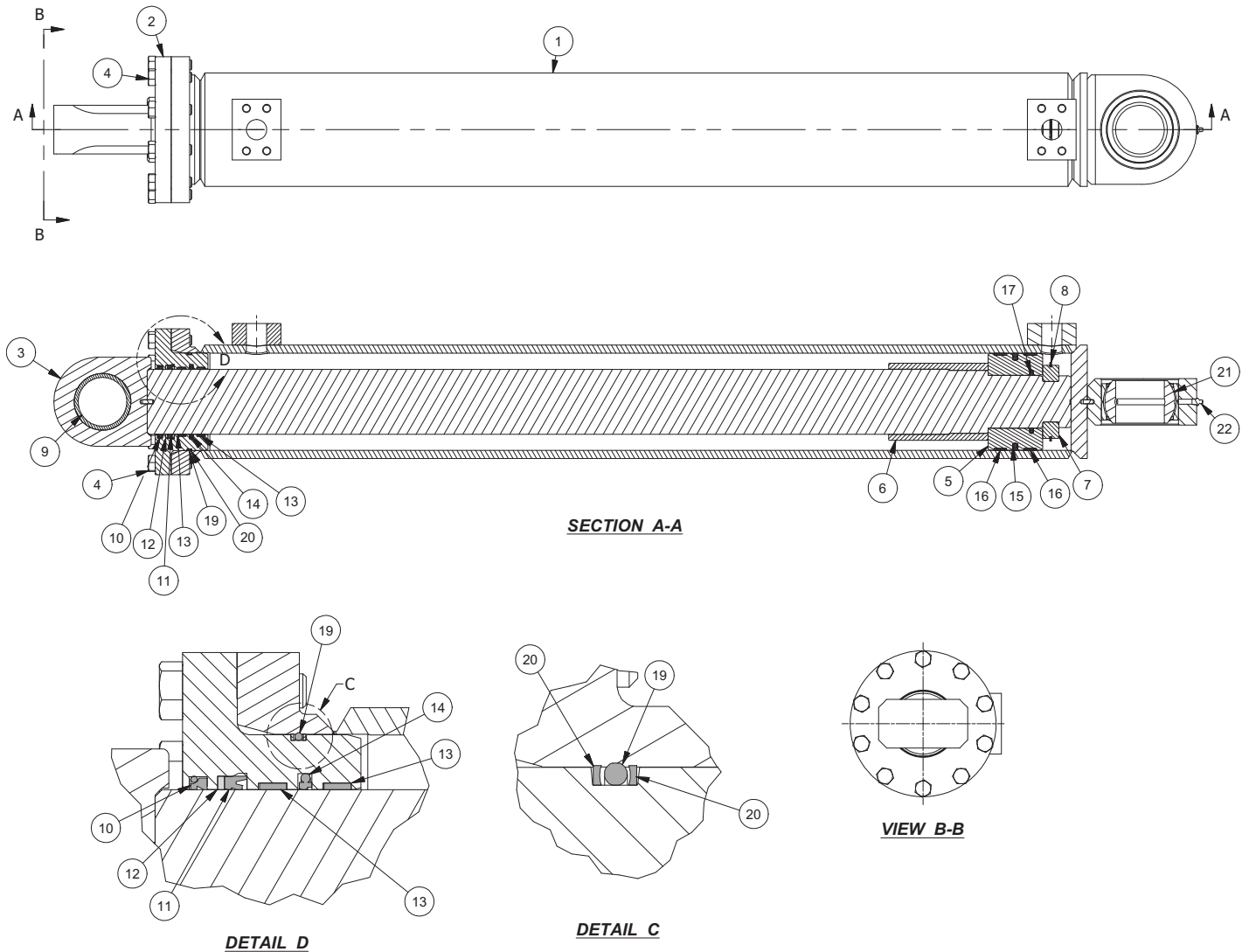
Page 2 of 2



UPPER SLIDING RAIL
 2 PLACES

Main Cylinder Assembly

TORQUE ITEM #4 TO 155 FT-LBS (LUBRICATED TORQUE)



REFER TO SEAL PART SILHOUETTES (FILLED IN GREY)
FOR INSTALLATION ORIENTATION

Item	Part No.	Qty	Description	Item	Part No.	Qty	Description
Main Cylinder Assembly							
1	901157	1	. Barrel	13	* 253120	2	. Wear Ring
2	901160	1	. Packing Gland	14	* 253108	1	. Seal, Step
3	901158	1	. Stem	15	* 253110	1	. Seal, Piston
4	Y17C-1036	10	. Capscrew	16	* 253111	2	. Wear Ring
5	901159	1	. Piston	17	* 253121	1	. Seal, Rod
6	901318	1	. Tube, Stop	19	* 15895W	1	. O-Ring
7	901319	1	. Tube, Ring	20	* R13803947	2	. Backup Ring
8	253143	1	. Ring, Retaining	21	255257	1	. Bearing, Spherical
9	901181	1	. Bushing	22	F000001661	1	. Fitting
10	* 253105	1	. Wiper Ring	* Included in Seal Kit 901363			
11	* Y098618.500	1	. Seal				
12	* 253107	1	. Backup Ring				

Section 2

Hydraulic/Power System

Hydraulic Power Unit (WE5)..... 2-3

- . Hydraulic Tank Assembly 2-6
- . Junction Box Assembly 2-8

Restriction Rail Cylinder..... 2-10

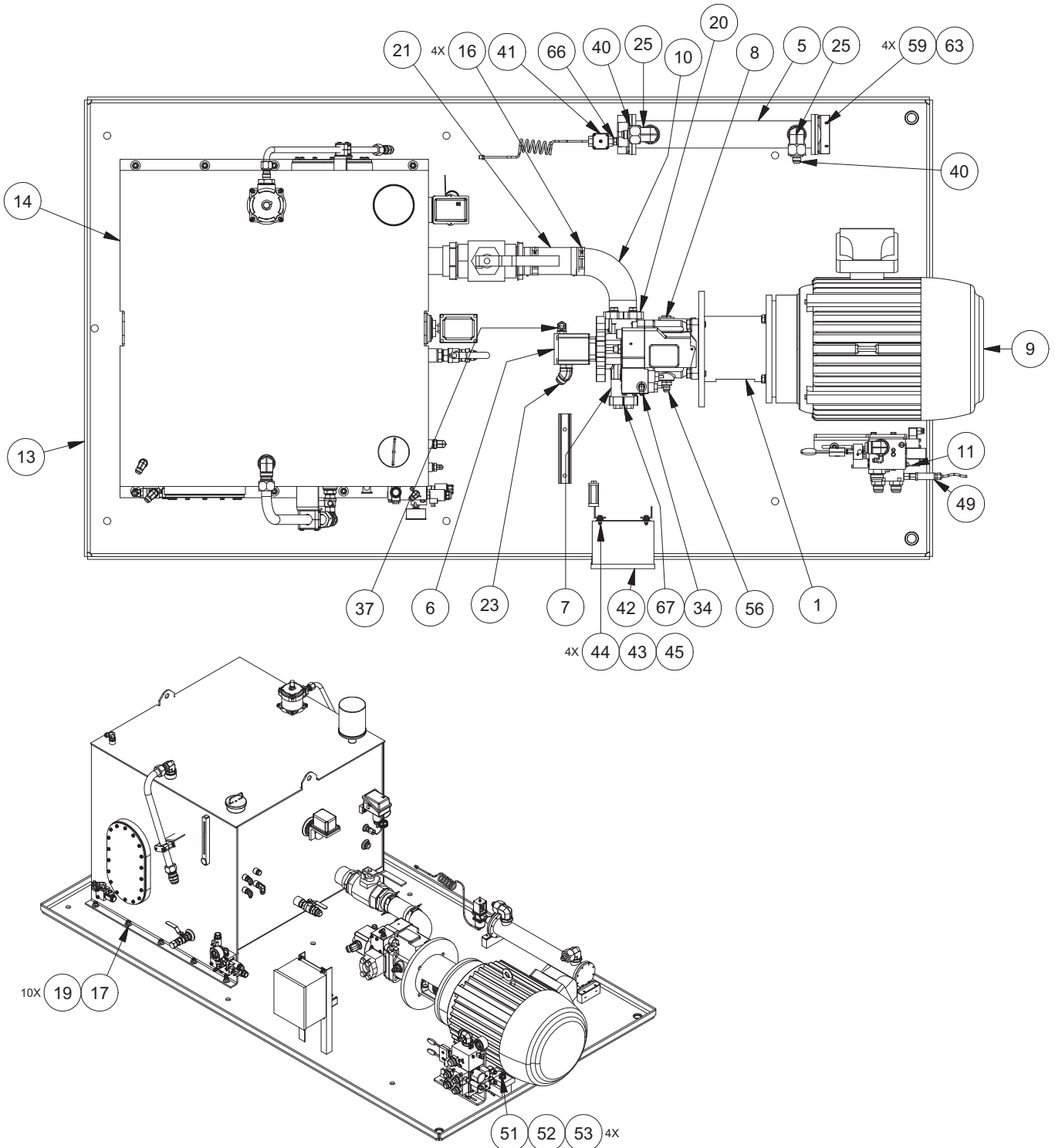
Hoses and Fittings 2-11

This page is intentionally left blank.

Hydraulic Power Unit (WE5)

First Used On ASC-0WE5-506

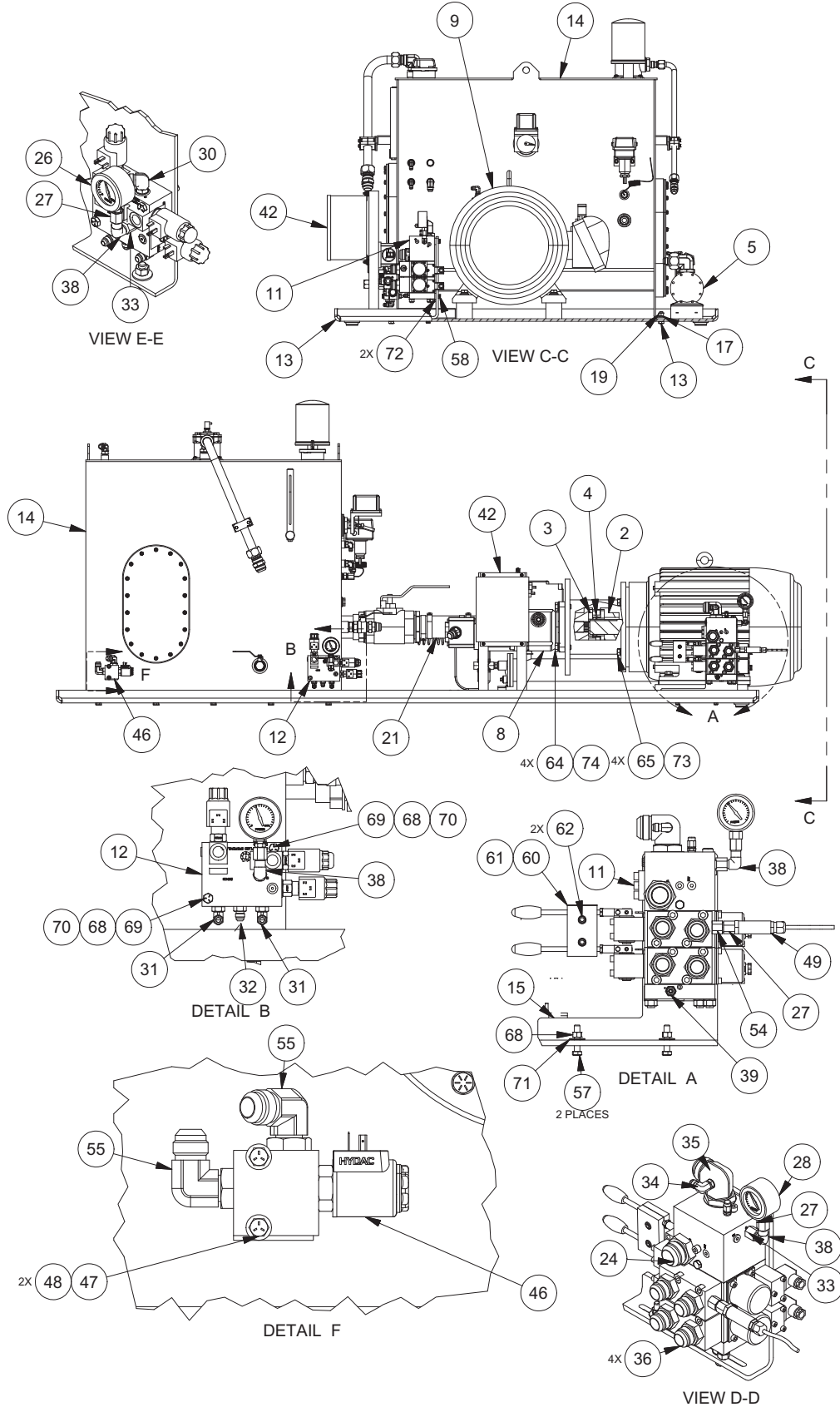
Page 1 of 3



Hydraulic Power Unit (WE5)

First Used On ASC-0WE5-506

Page 2 of 3



Hydraulic Power Unit (WE5)

First Used On ASC-0WE5-506

Page 3 of 3

Item	Part No.	Qty	Description	Item	Part No.	Qty	Description
906646 Hydraulic Power Unit (WE5)							
01	254140	1	. Adapter	41	255723	1	. Valve, Water Modulating
02	224960	1	. Coupling	42	** 905503	1	. Junction Box Assembly
03	253669	1	. Motor Coupling	43	F000007550	4	. Grommet F/Bull Gear Shield
04	237526	1	. Insert	44	240093	4	. Capscrew
05	255722	1	. Heat Exchanger	45	234170	4	. Nut, Esna
06	906694	1	. Pump, Recirculation	46	905545	1	. Valve
07	253680	1	. Check Valve	47	Y01C-0428	2	. Capscrew
08	253672	1	. Pump, Piston	48	221763W	2	. Washer
09	253671	1	. Electric Motor	49	254535	1	. Transducer
10	255077	1	. Fitting	51	221630W	4	. Capscrew
11	255204	1	. Valve	52	234271	4	. Washer
12	255121	1	. Manifold, Control	53	00103325	4	. Lockwasher
13	902766	1	. Pan Weldment, Drip	54	2310365	1	. Fitting
14	* 906655	1	. Hydraulic Tank Assembly	55	229384	2	. Fitting
15	903008	1	. Bracket	56	209208	1	. Fitting
16	225370	4	. T-Bolt Clamp	57	R13801813	2	. Capscrew
17	239519	10	. Washer	58	221499W	4	. Capscrew
19	221711W	10	. Hex Nut	59	162572W	4	. Capscrew
20	225661	1	. Kit, Split Flange	60	906656	1	. Valve, Clamp A
	203528	1	. . O-Ring	61	906657	1	. Valve, Clamp B
	229082	4	. . Capscrew	62	Y73G-0512	2	. Capscrew
	230769	2	. . Clamp Half	63	221767W	4	. Washer
21	249266	1'	. Hose	64	Y17C-1232	4	. Capscrew
23	209147	1	. Fitting	65	Y17C-1028	4	. Capscrew
24	209619	1	. Fitting	66	209161	1	. Fitting
25	209137	2	. Fitting	67	229450	1	. Kit, Split Flange
26	214203	1	. Gauge		203516	1	. . O-Ring
27	225648	3	. Snubber, Gauge		234893	4	. . Capscrew
28	231135	1	. Gauge		236974	2	. . Clamp Half
30	224298	1	. Fitting	68	221707W	4	. Hex Nut
31	R13801972	2	. Fitting	69	18540W	2	. Capscrew
32	211560	1	. Fitting	70	15134W	2	. Washer
33	20856	2	. Fitting	71	R13802624	2	. Washer
34	11860	2	. Fitting	72	906845	2	. Spacer, Valve
35	529950	1	. Fitting	73	200608	4	. Lockwasher
36	209323	4	. Fitting	74	R13809066	4	. Lockwasher
37	213917	1	. Fitting				
38	223638	2	. Fitting				
39	222886	1	. Fitting				
40	234591	2	. Fitting				

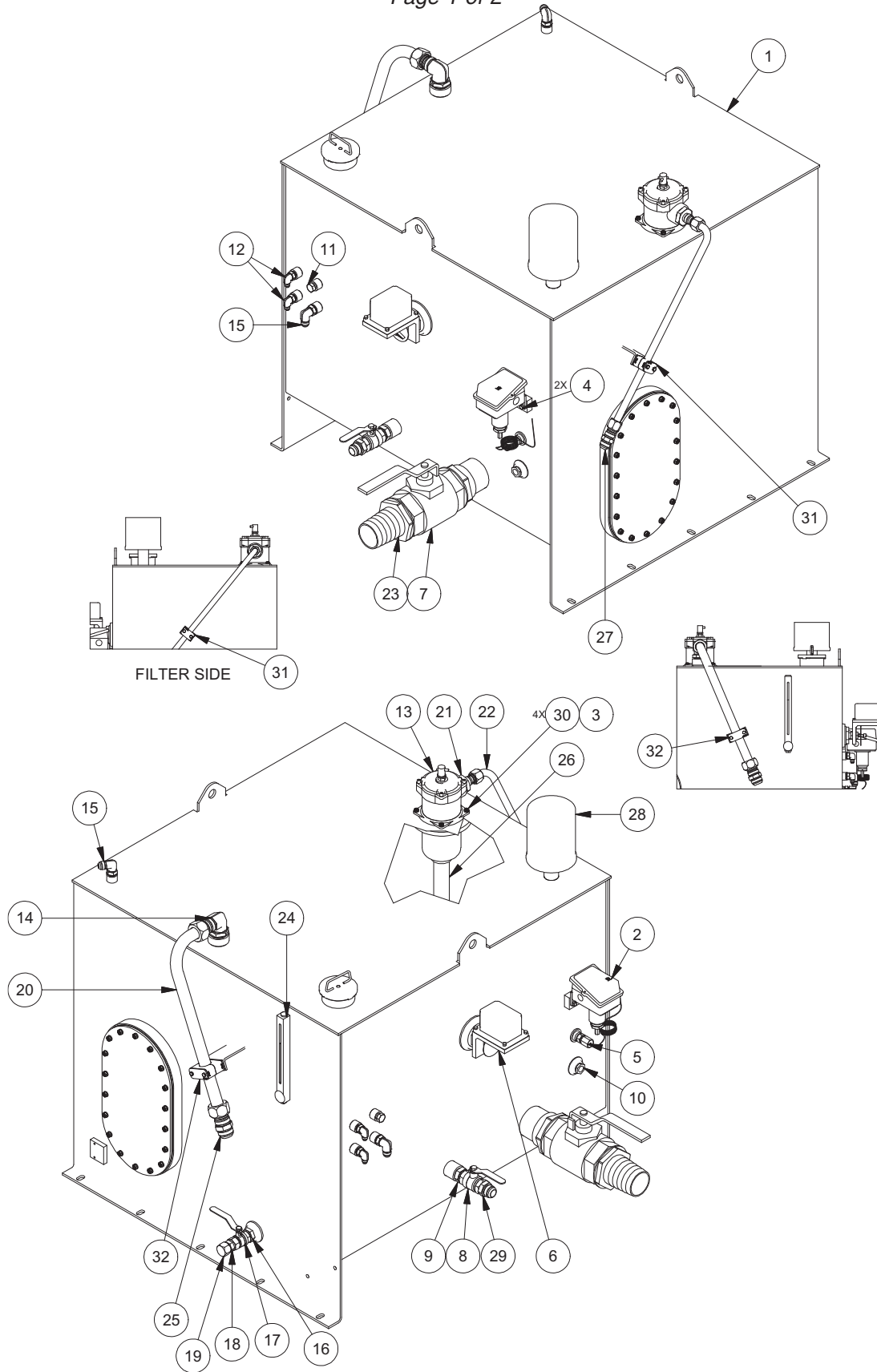
* See Separate Coverage (See Page 2-6)

** See Separate Coverage (See Page 2-8)

Rev C

Hydraulic Tank Assembly

Page 1 of 2



Hydraulic Tank Assembly

Page 2 of 2

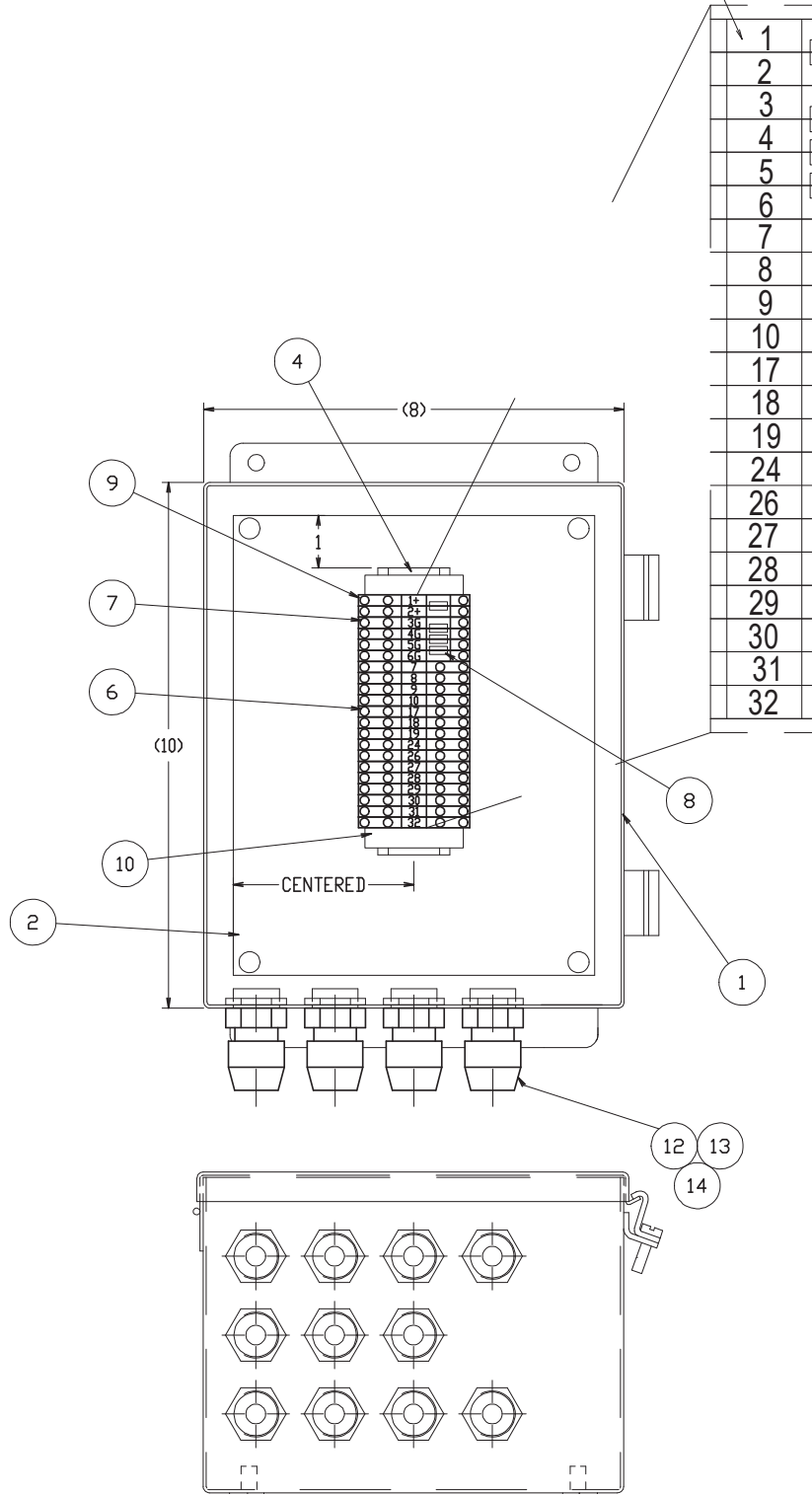
Item	Part No.	Qty	Description	Item	Part No.	Qty	Description
	906655		Hydraulic Tank Assembly				
1	902837	1	. Hydraulic Tank	17	218923	1	. Ball Valve
2	253673	1	. Switch, Temp	18	209759	1	. Fitting
3	R13812512	4	. Lockwasher	19	209090	1	. Fitting
4	399741W	2	. Screw, Ser Flg	20	902993	1	. Tube Assembly
5	254006	1	. Thermowell	21	23408	1	. Fitting
6	SWI0059037	1	. Switch, Float	22	902279	1	. Tube Assembly
7	253679	1	. Ball Valve	23	254135	1	. Fitting
8	254010	1	. Ball Valve	24	253675	1	. Guage, Sight Level
9	15377	1	. Fitting	25	209443	1	. Fitting
10	255724	1	. Thermowell	26	902960	1	. Pipe
11	210709	1	. Fitting	27	209441	1	. Fitting
12	23945	2	. Fitting	28	256179	1	. Element
13	906653	1	. Filter Assembly, In-Line	29	209323	1	. Fitting
	255996	1	. Element	30	R13810993	4	. Capscrew
14	209714	1	. Fitting	31	906720	1	. Bracket, Mounting
15	229384	2	. Fitting	32	906721	1	. Bracket, Mounting
16	21205	1	. Fitting				

Rev A

Junction Box Assembly

Page 1 of 2

NUMBER TERMINALS AS SHOWN



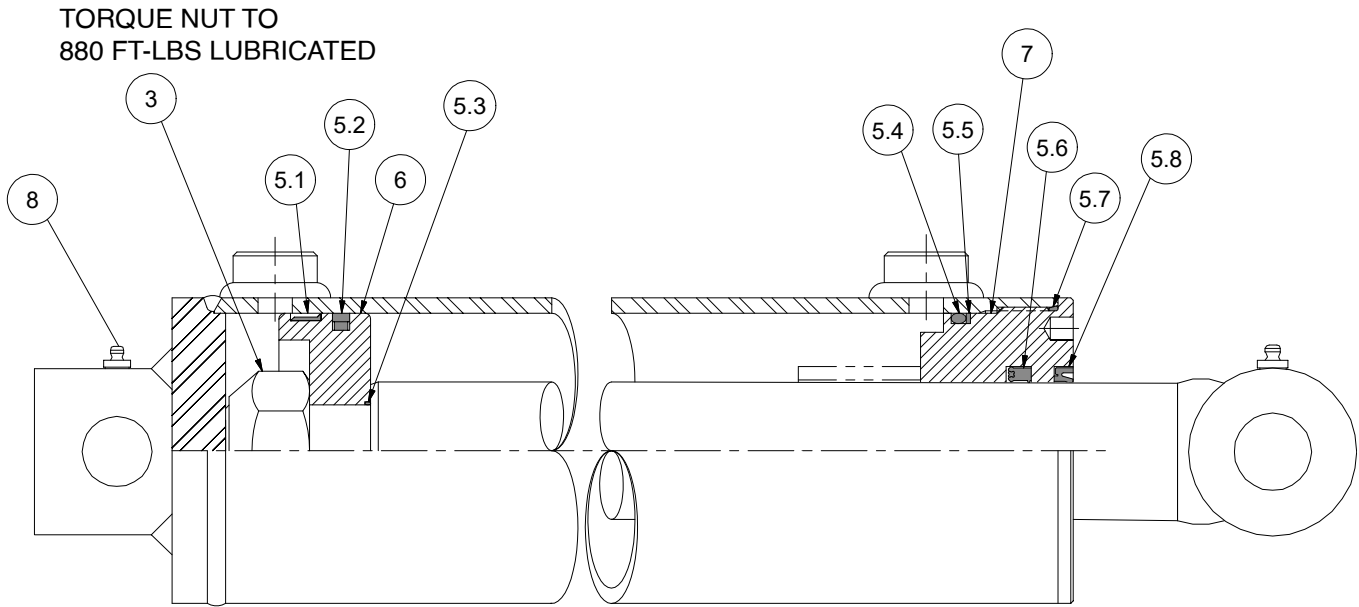
Junction Box Assembly

Page 2 of 2

Item	Part No.	Qty	Description	Item	Part No.	Qty	Description
	905503		Junction Box Assembly				
1	903001	1	. Box	8	232239	4	. Jumper
2	22623	1	. Panel, Back	9	232238	1	. End Plate
4	22628	6IN	. Rail	10	241761	2	. End Stop
6	239317	15	. Terminal Block	12	27663	10	. Connector, Cord
7	232237	6	. Terminal Block	13	RNG0005262	10	. Ring, Seal
				14	220582	10	. Ring Nut

Rev A

Restriction Rail Cylinder

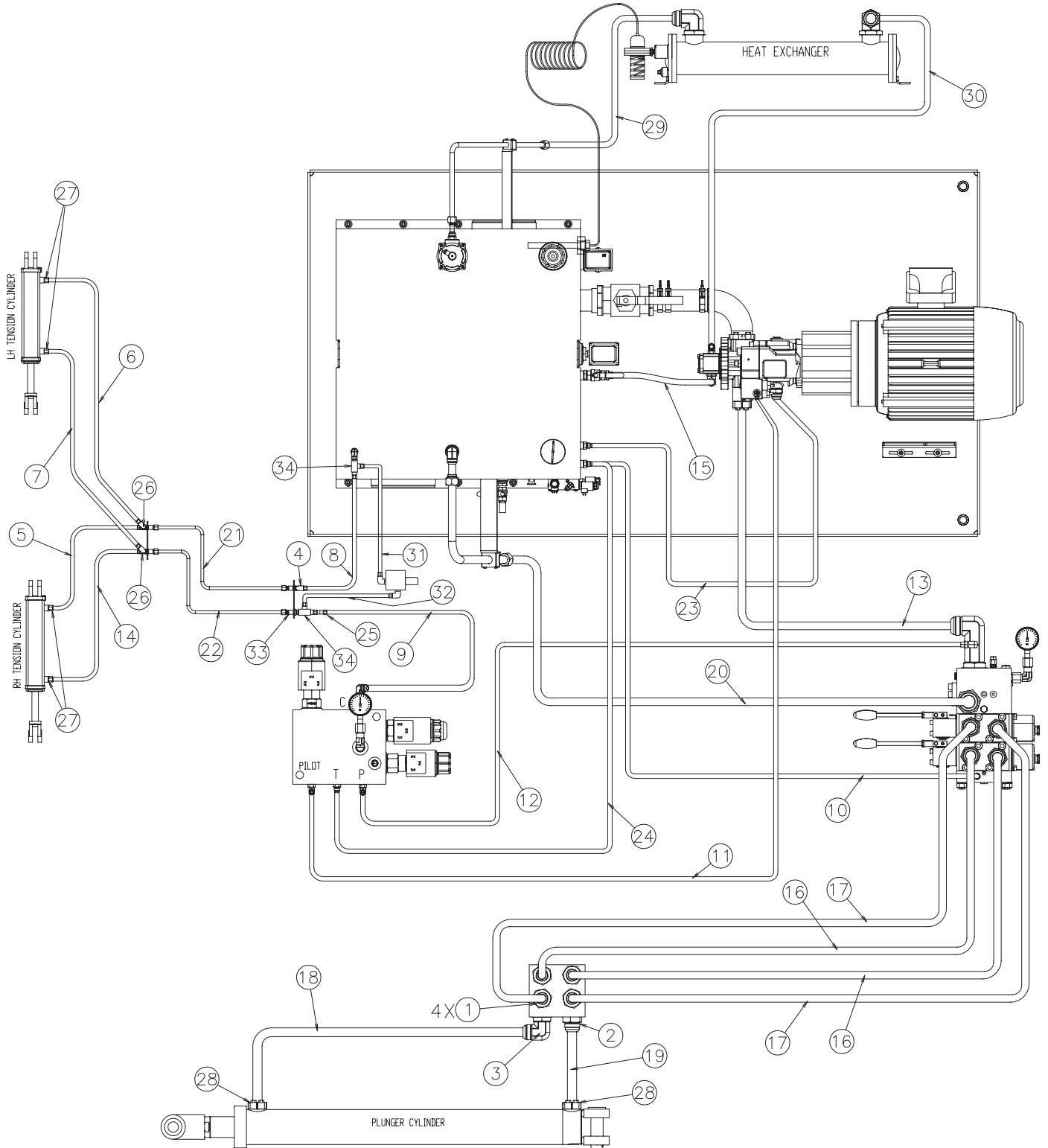


*NOTE SEAL ORIENTATION WHEN INSTALLING

Item	Part No.	Qty	Description
902345			
Restriction Rail Cylinder			
3	221377W	1	. Locknut
5	257369	1	. Kit, Seal
5.1	*	1	.. Bearing Ring
5.2	*	1	.. Seal
5.3	*	1	.. O-ring
5.4	*	1	.. O-ring
5.5	*	1	.. Washer
5.6	*	1	.. Seal
5.7	*	1	.. O-ring
5.8	*	1	.. Wiper
6	260661	1	. Piston
7	260662	1	. Gland
8	260663	2	. Grease Zerk Fitting
*	Not Sold Separately		

Hoses and Fittings

Page 1 of 2



Hoses and Fittings

Page 2 of 2

Item	Part No.	Qty	Description	Item	Part No.	Qty	Description
	906645		Hose & Fittings				
1	209323	4	. Fitting	20	255511	1	. Hose Assembly
2	209619	1	. Fitting	21	901754	1	. Tube Assembly
3	209714	1	. Fitting	22	901755	1	. Tube Assembly
4	243248	1	. Fitting	23	2509118	1	. Hose Assembly
5	906654	1	. Hose Assembly	24	HOS036662A	1	. Hose Assembly
6	256143	1	. Hose Assembly	25	R13801538	1	. Fitting
7	256144	1	. Hose Assembly	26	HYD5725050	2	. Fitting
8	255467	1	. Hose Assembly	27	R13807508	4	. Fitting
9	255468	1	. Hose Assembly	28	229449	2	. Kit, Split Flange
10	255469	1	. Hose Assembly		203446	1	. . O-Ring
11	255470	1	. Hose Assembly		225328	2	. . Clamp Half
12	255471	1	. Hose Assembly		230961	4	. . Capscrew
13	255472	1	. Hose Assembly	29	207825	1	. Hose Assembly
14	255473	1	. Hose Assembly	30	206636	1	. Hose Assembly
15	255506	1	. Hose Assembly	31	252852	1	. Hose Assembly
16	255507	2	. Hose Assembly	32	257188	1	. Hose Assembly
17	255508	2	. Hose Assembly	33	225830	1	. Fitting
18	255509	1	. Hose Assembly	34	14793	2	. Fitting
19	255510	1	. Hose Assembly				

Rev A

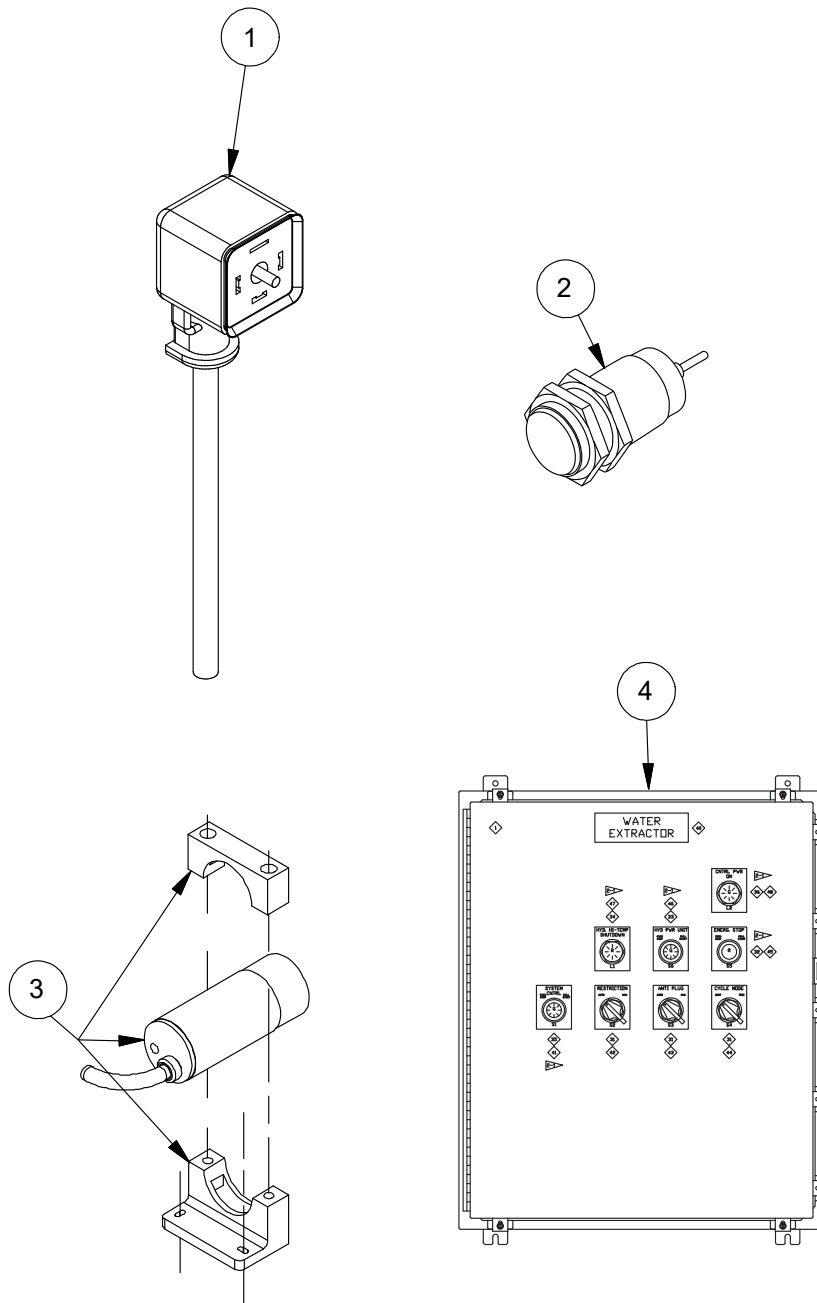
Section 3 Electrical System

Electrical System.....	3-3
. Control Panel (IQAN)	3-4
Junction Box.....	See Section 2(Hydraulic/Power System)

This page is intentionally left blank.

Electrical System

First Used On ASC-0WE5-507



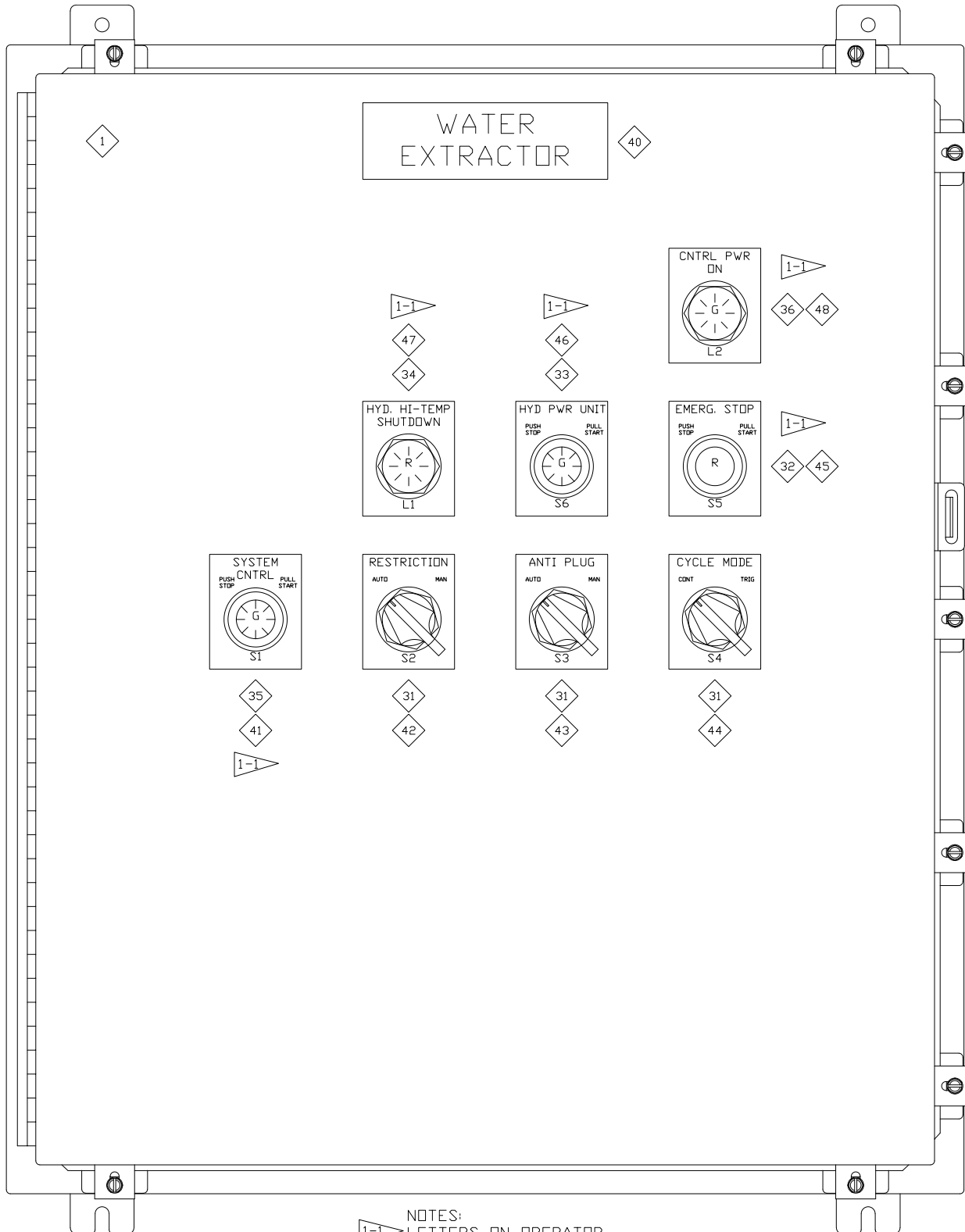
Item	Part No.	Qty	Description	Item	Part No.	Qty	Description
	910512		Electrical System				
1	255654	4	. Connector	3	254163	3	. Sensor, Proximity
2	244112	3	. Proximity Switch	4	* 910513	1	. Control Panel (IQAN)

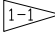
* See Separate Coverage (See Page 3-4)

Control Panel (IQAN)

First Used On ASC-0WE5-507

Page 1 of 6

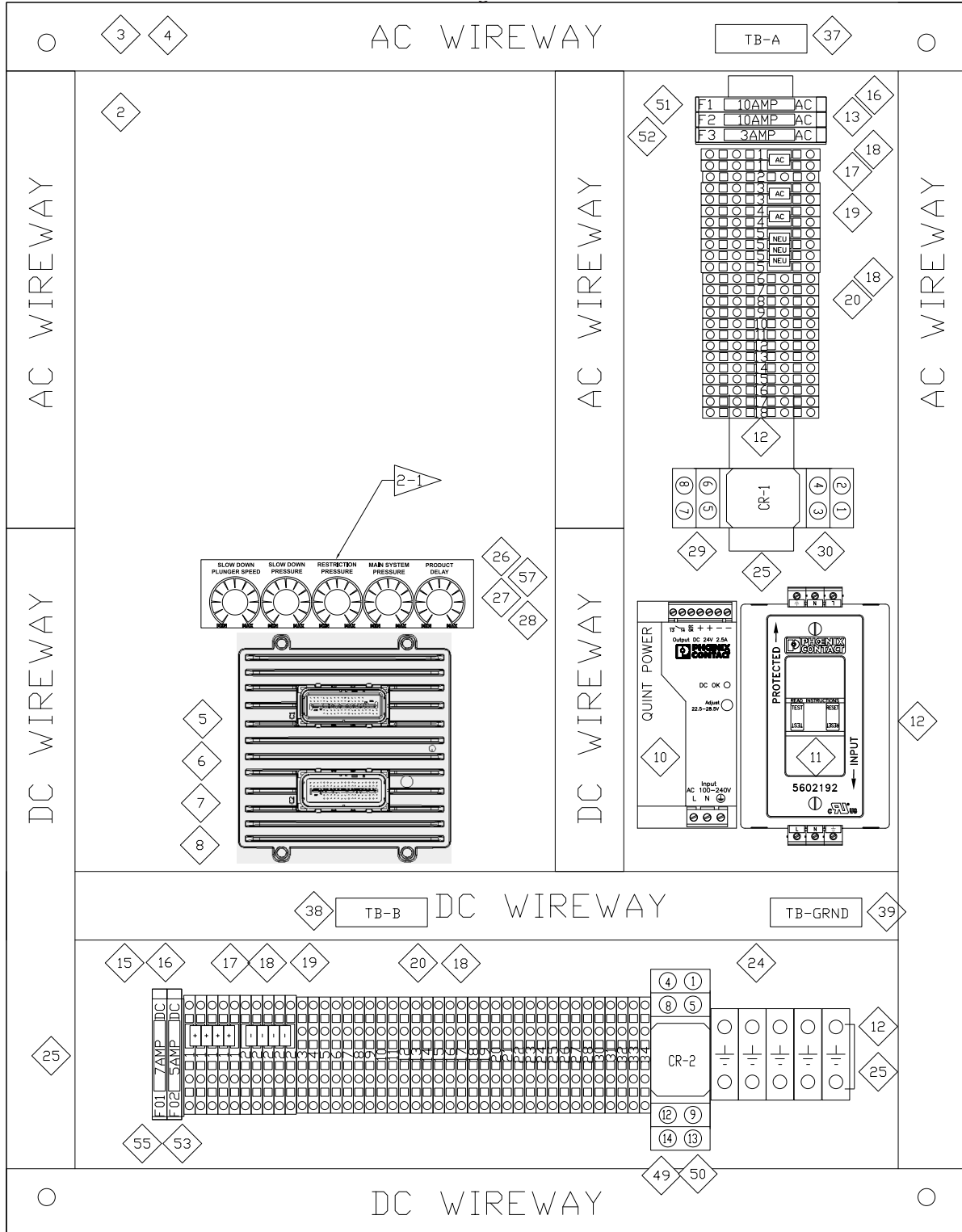


 NOTES:
 LETTERS ON OPERATOR
 CONTROL INDICATES COLOR
 G = GREEN
 R = RED

Control Panel (IQAN)

First Used On ASC-0WE5-507

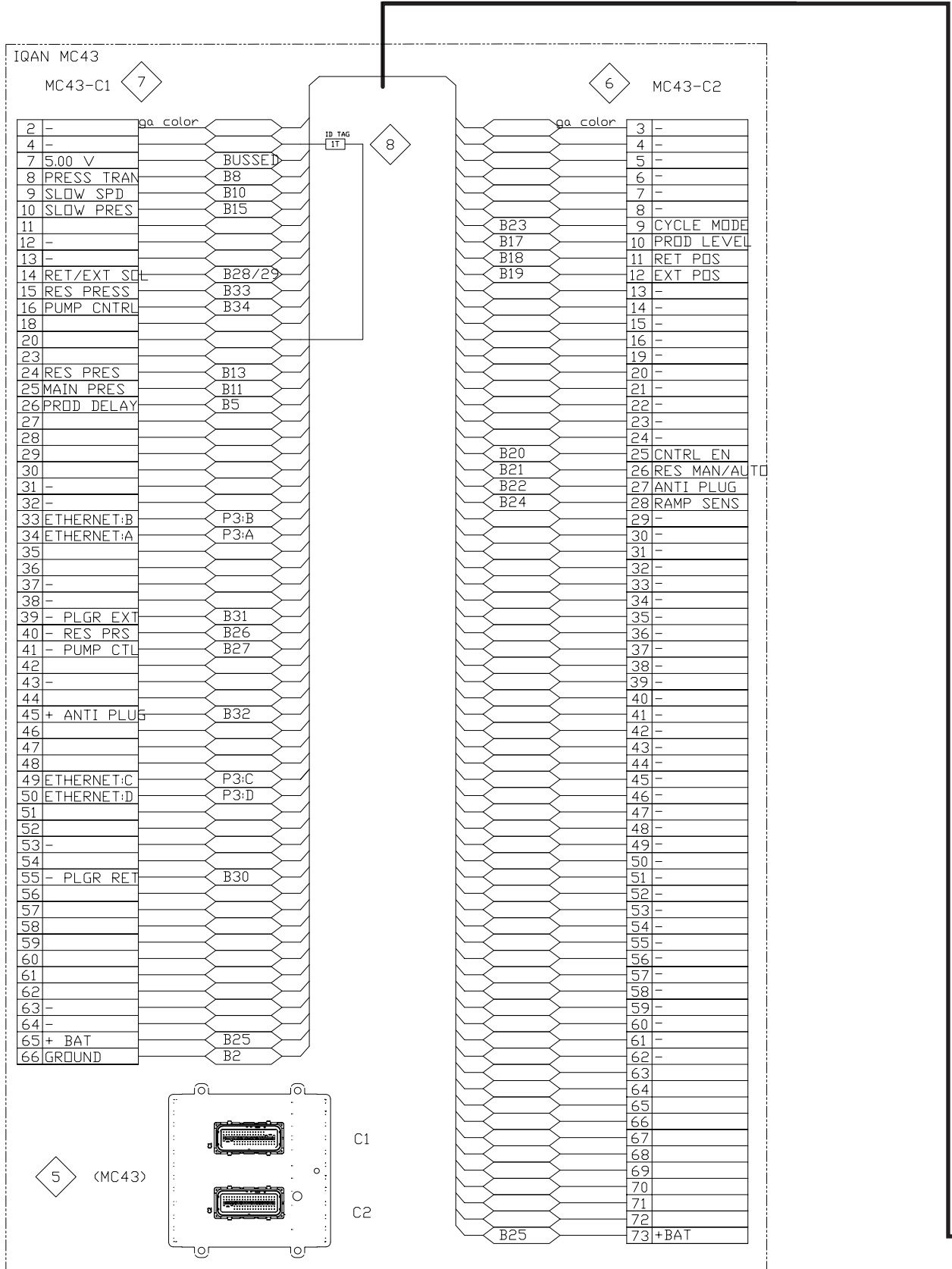
Page 2 of 6



Control Panel (IQAN)

First Used On ASC-0WE5-507

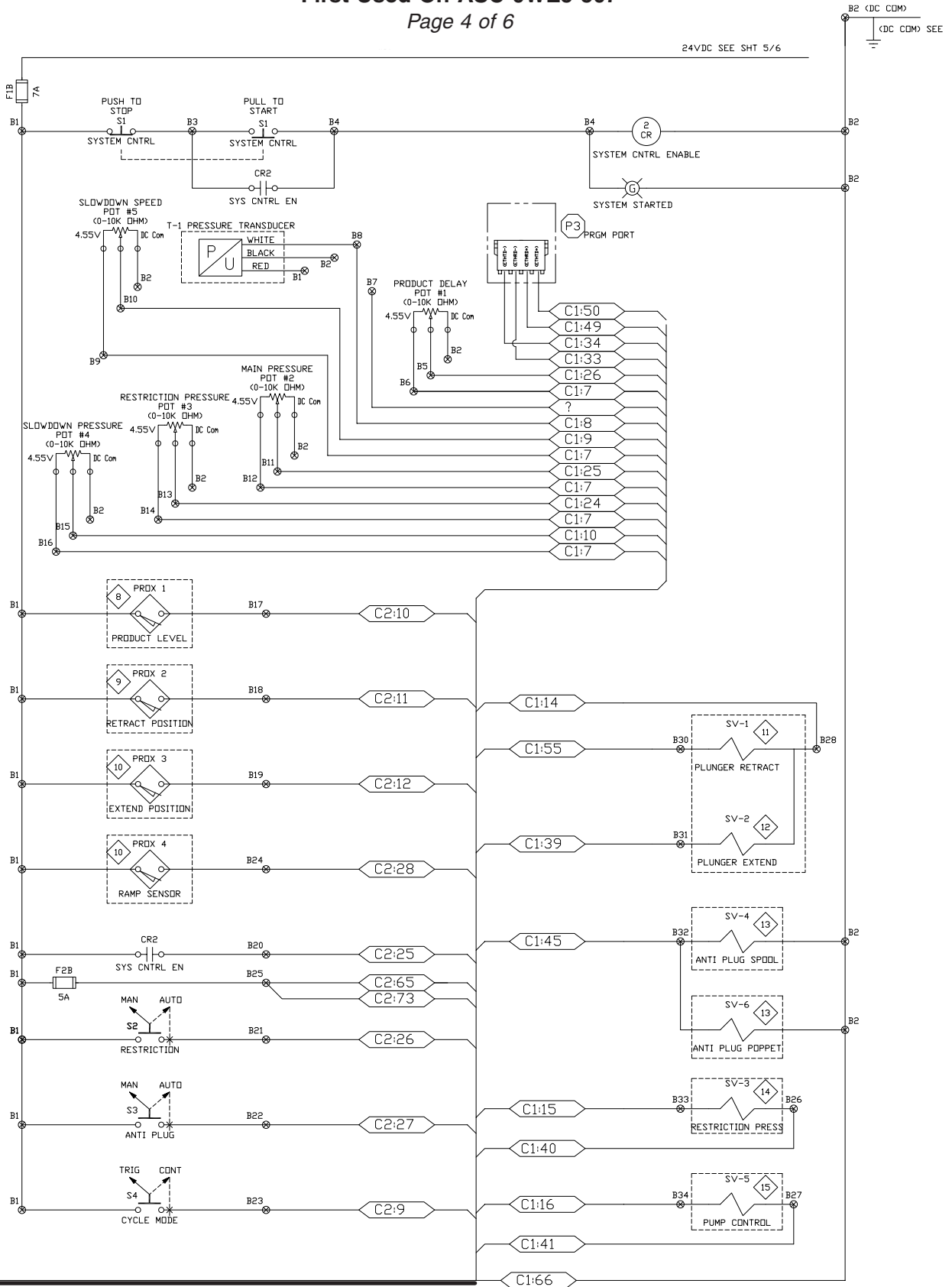
Page 3 of 6



Control Panel (IQAN)

First Used On ASC-0WE5-507

Page 4 of 6

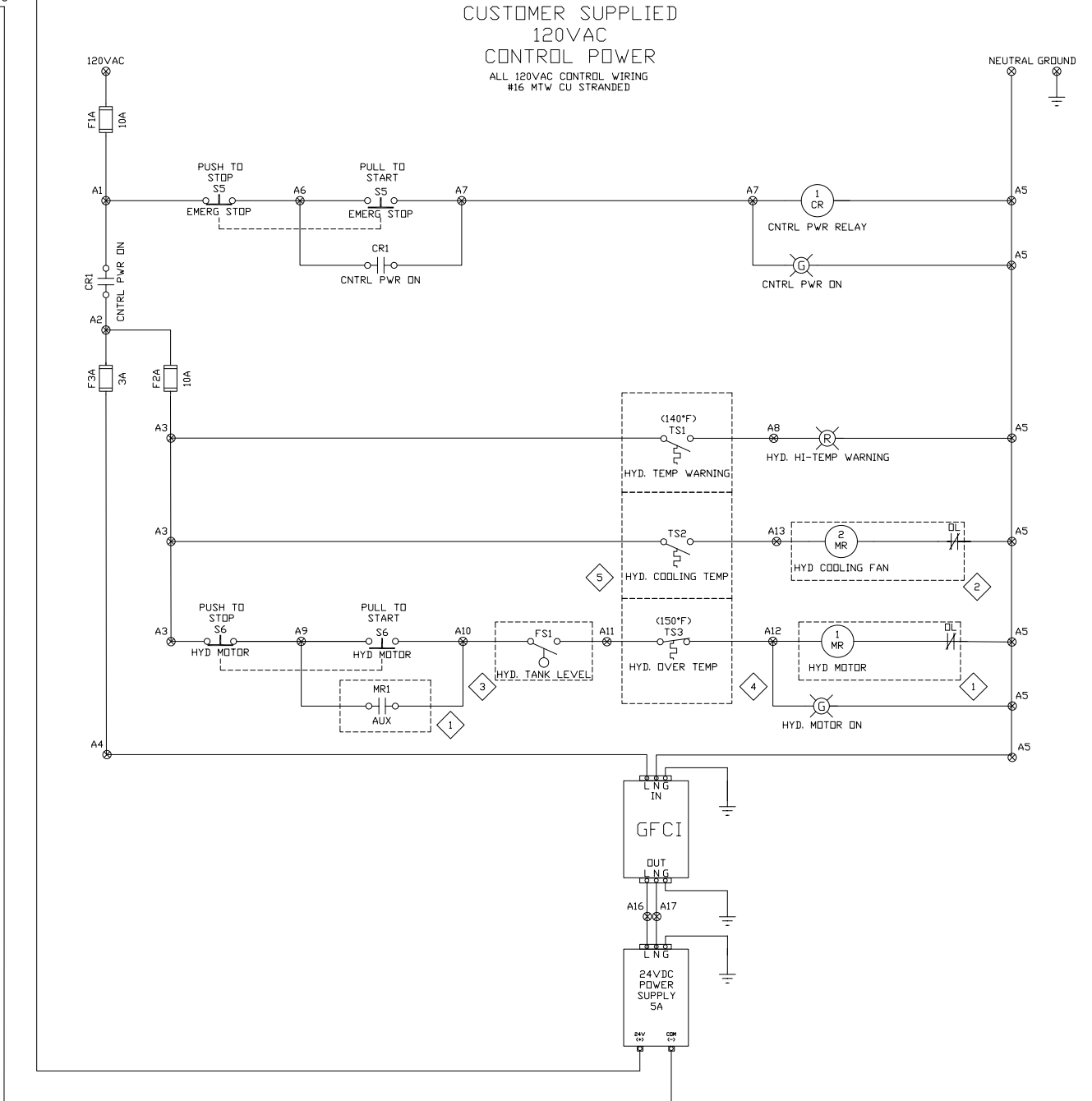


Control Panel (IQAN)

First Used On ASC-0WE5-507

Page 5 of 6

24VDC SEE SHT 3/6 AND 4/6
 (DC COM) SEE SHT
 3/6 AND 4/6



Control Panel (IQAN)

First Used On ASC-0WE5-507

Page 6 of 6

Item	Part No.	Qty	Description	Item	Part No.	Qty	Description
	910513		Contro Panel				
1	256185	1	. Enclosure	28	905487	1	. Mounting Bracket
2	256186	1	. Back Panel	29	256018	1	. Relay
3	N/A	2	. Wireway	30	256017	1	. Relay Base
4	N/A	2	. Wireway Cover	31	256203	1	. Switch
5	910514	1	. Control Module, Programed	32	256204	1	. Switch, Push/Pull
6	89004	1	. Connector Kit	33	256207	1	. Switch, Start/Stop
7	89012	1	. Connector Kit	34	256206	1	. Indicator Light
8	602536	1	. IQAN ID Tag, Molex	35	256207	1	. Switch, Start/Stop
10	254146	1	. 5A Power Supply	36	256208	1	. Indicator Light
11	256209	1	. Ground-Fault Circuit Interrupter	37	256210	1	. Label
12	N/A	1	. Rail	38	256211	1	. Label
13	N/A	3	. 120V Fuse Block	39	256212	1	. Label
15	256191	2	. 24V Fuse Block	40	256213	1	. Label
16	256190	2	. Fuse End Plate	41	256214	1	. Label
17	256193	19	. Terminal Block	42	256215	1	. Label
18	256194	4	. End Plate	43	256216	1	. Label
19	250697	14	. Jumper	44	256217	1	. Label
20	256195	37	. Terminal Block	45	256218	1	. Label
24	256198	7	. Grounding	46	N/A	1	. Label
25	256199	8	. End Stop	47	256220	1	. Label
26	256200	5	. Potentiometer	48	256221	1	. Label
27	256201	5	. Potentiometer Knob	49	256020	1	. Relay
				50	256019	1	. Relay Socket
				51	246933	2	. 10A Fuse
				52	243609	1	. 3A Fuse
				53	253577	1	. 5A Fuse
				55	256192	1	. 7A Fuse
				57	906861	1	. Label

This page is intentionally left blank.

This page is intentionally left blank.



To find a dealer in your area,

Call: 503.625.2560

Fax: 503.625.7269

Visit our website: www.alliedsystems.com

Allied Systems
COMPANY

PB000WE521 08/2021

Printed in USA