

FREEMAN



Parts Manual

Model 280 Self Propelled John Deere Components Baler S/N 280S14-003

Important: Allied Systems Company does not support the parts contained in this manual. Contact Hay Tools Inc or your local John Deere Dealer for service.

Refer to Freeman Parts Manual PB0000028X For Baler Parts.



WARNING

California Proposition 65 Warning

Diesel engine exhaust and some of its constituents are known to the State of California to cause cancer, birth defects, and other reproductive harm.

Contact Hay Tools Inc, or your local John Deere dealer, for service and parts support on non-baler assemblies:

Duane Huppert
Hay Tools Inc
1003 S Ruby
Ellensburg, WA 98926
509.929.2572

GENERAL OVERVIEW

Your decision to buy a Freeman Baler was a wise decision. When it comes to Harvesting hay, Freeman is a solid investment. You will find your new baler comes from a long history of top quality haying equipment. At Allied Systems Company, our goal is to provide you with the most rugged, highest capacity, longest lasting equipment available on the market.

Freeman Self Propelled Balers, manufactured by Allied Systems Co., combine the best of Freeman and John Deere technologies. Combining Freeman and John Deere components has saved thousands of dollars in research and development costs, yet we have produced the best Self Propelled baler on the market today. The baler frame and all baling components are Freeman designed and built. The operators cab, engine, planetary drives, hydraulic pump and hydrostatic system are from John Deere .

At Allied Systems Company, safety is not just a word, it is the Rule. Allied Systems Company prides itself on an outstanding safety record. This concern for safety is displayed in the equipment that we build. Special care has been taken while designing your Freeman baler to make it as safe as possible.

We recommend that you carefully read the entire manual before operating your new baler. Becoming fully acquainted with its performance features, adjustments, controls and maintenance schedules will be repaid in a long, satisfactory life of the product.

GENERAL INFORMATION

The purpose of this manual is to assist the operator in maintaining and operating a Freeman Self Propelled Baler. Please read it carefully, as it provides important information and instructions that will help you achieve years of dependable equipment performance.

NOTE: Reference to left-hand and right-hand usage throughout this manual refers to the position when seated in the operator's seat, facing forward.

Replacement Parts:

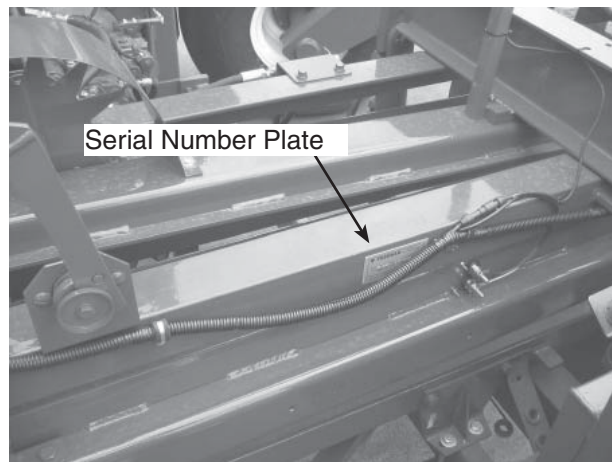
Only genuine Freeman and John Deere replacement parts should be used to service the baler. These parts are available from your authorized Freeman and John Deere dealer. To ensure prompt and efficient service when ordering parts or requesting service repairs, remember to provide the dealer with the following information:

1. The correct part description or part number.
2. The model number of the baler.
3. The serial number of the baler.

Use the Freeman and John Deere parts books you received with your baler for ordering parts.

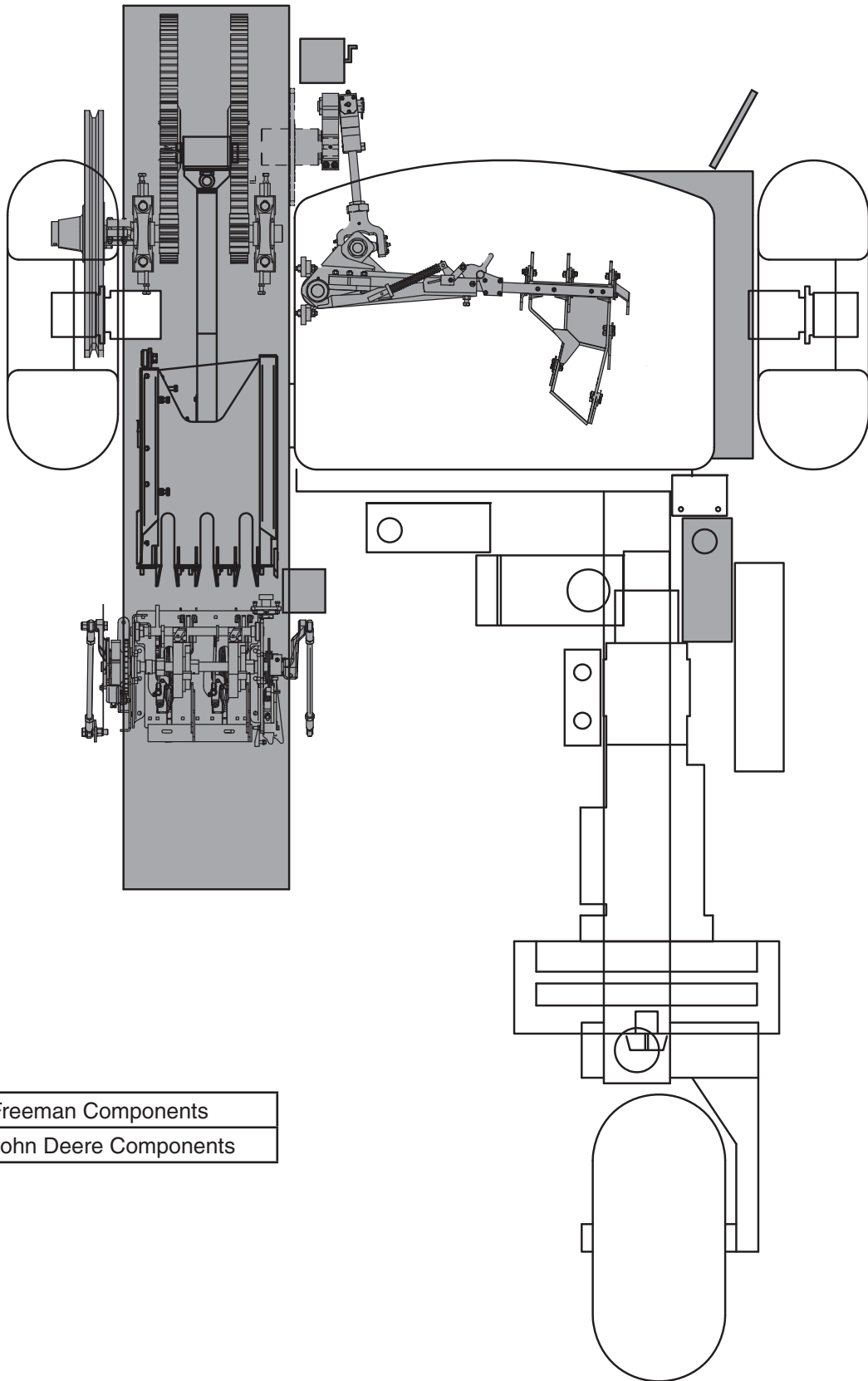
Serial number location:

The serial number is very important in effectively transacting a parts order or service repair with the dealer. Use the serial number in all correspondence to ensure proper identification of your Freeman baler. The serial number is located on the baling chamber as shown.

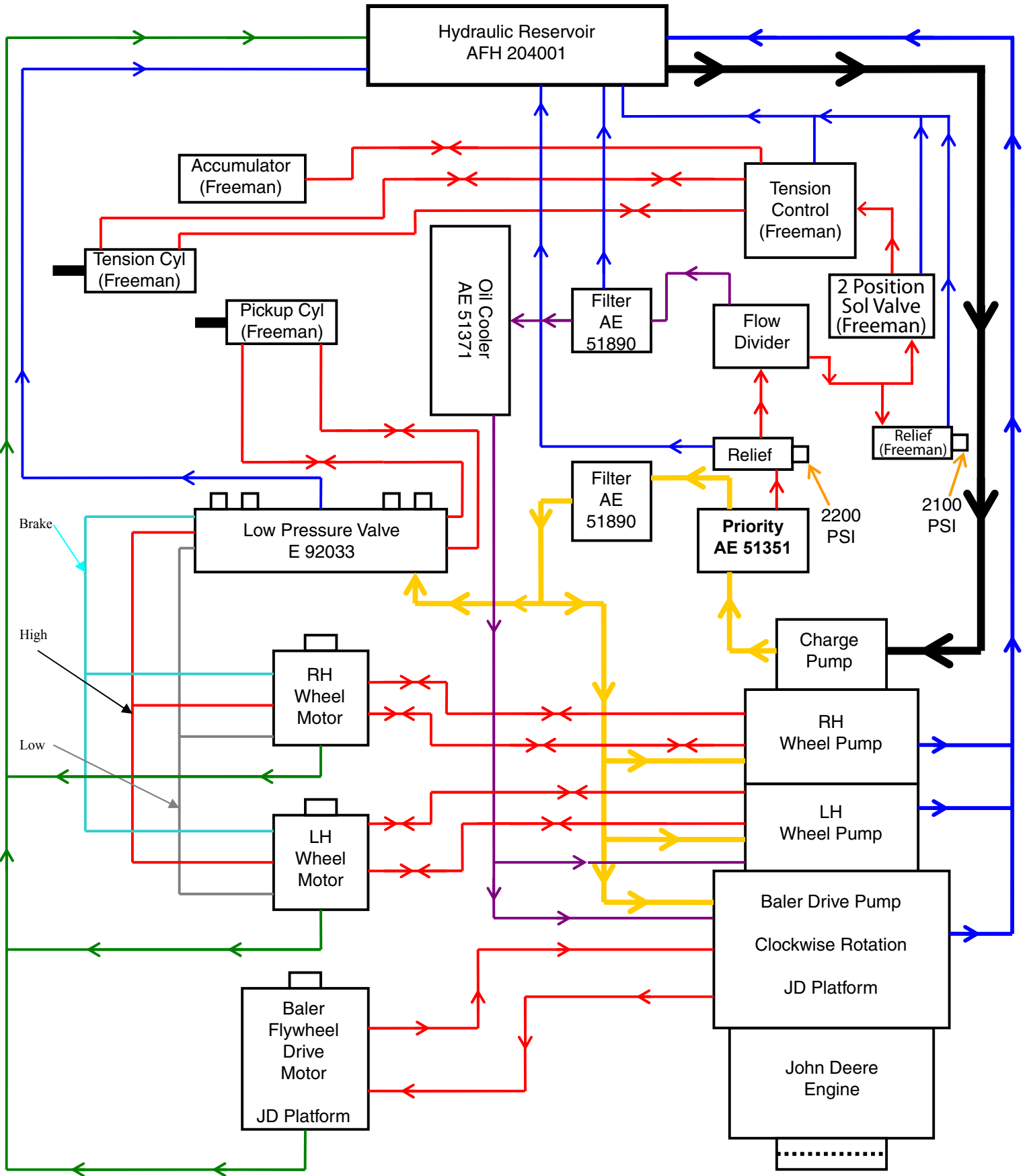


BALER SERIAL NO. 280S14-003

Parts diagram below is for SP baler 280S14-003



280 SP BALER

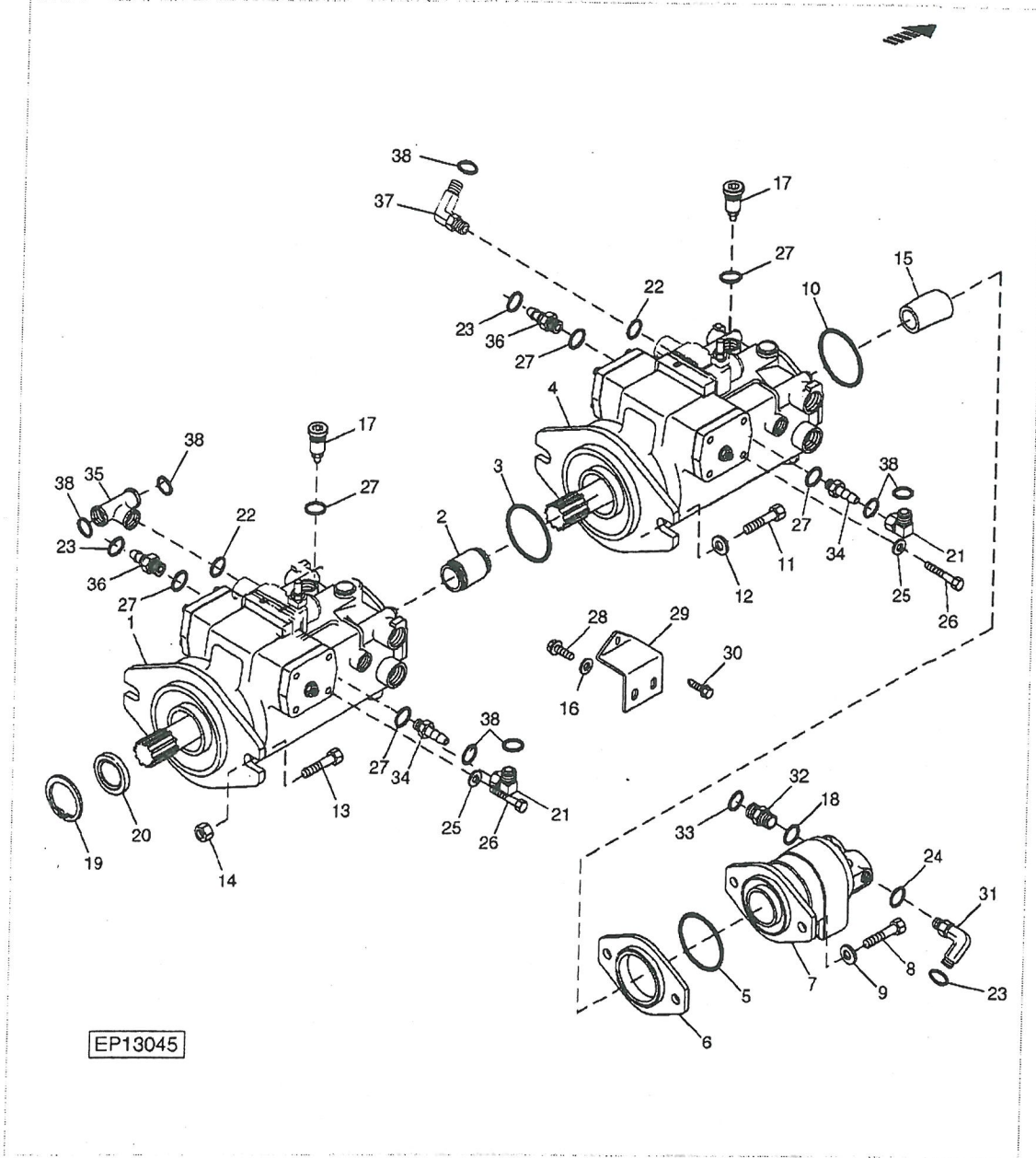


All components not labeled "(Freeman)" are John Deere 4890 Windrower except the Header Motor and Pump are John Deere 4995 Windrower.

(Blue - Return) (Red - High Pressure) (Yellow - Charge Pressure) (Green - Case Drain)
 (Black - Suction) (Purple - Cooler) (Lt Green - Brake)



PC9108 70-30 4895 Self-Propelled Windrower / TANDEM AND CHARGE PUMPS - S.N. (320001 -) [02C08]
PC9108 - OTTUMWA



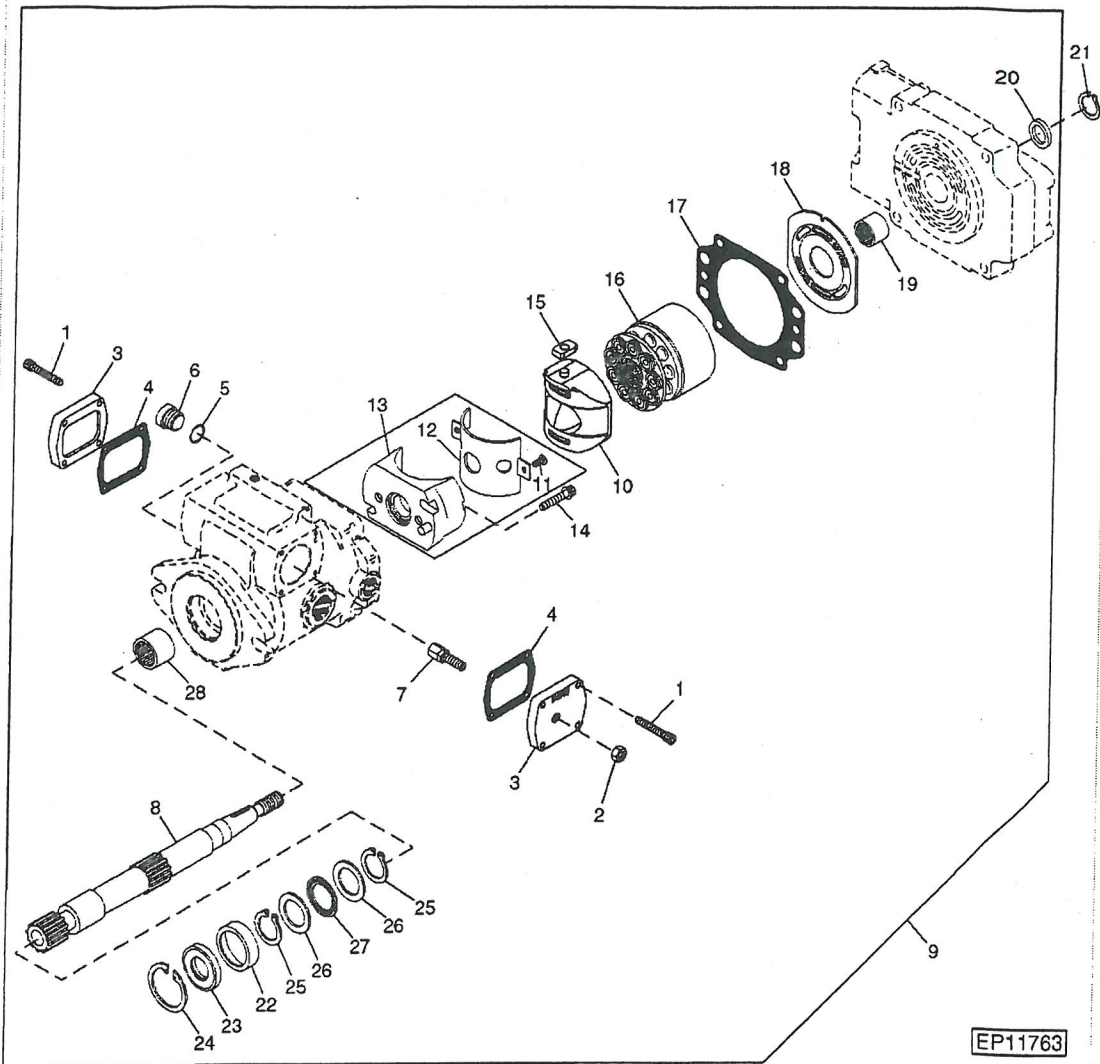
Part List

PC9108 70-30 4895 Self-Propelled Windrower / TANDEM AND CHARGE PUMPS - S.N. (320001

-) [02C08] PC9108 - OTTUMWA

KEY	PART NO.	PART NAME	QTY	SERIAL NO.	REMARKS
1	AE73783	HYDRAULIC PUMP	1		
2	AM38333	COUPLING	1		
3	E66413	O-RING	1		
4	AE73784	HYDRAULIC PUMP	1		
5	E65288	O-RING	1		
6	E93316	SPACER	1		
7	AE59669	PUMP	1		
7	AE73220	SEAL KIT	1		
8	19H2732	CAP SCREW	2		3/8" X 2-3/4"
9	24H1864	WASHER	2		13/32" X 3/4" X 7/64"
10	E65288	O-RING	1		
11	19H2898	CAP SCREW	2		1/2" X 1-1/4"
12	24H1341	WASHER	2		17/32" X 15/16" X 0.060"
13	19M7814	SCREW	2		M12 X 50
14	E63527	NUT	2		
15	MT932	SPLINED COUPLING	1		
16	24M7180	WASHER	2		13 X 37 X 3 MM
17	AE70121	PRESSURE RELIEF VALVE	4		
18	R29936	O-RING	1		
19	N51168	SNAP RING	1		
20	E55716	SEAL	1		
21	38H1095	ELBOW FITTING	2		
22	R26375	O-RING	2		
23	T77858	O-RING	3		
24	R26906	O-RING	1		
25	MT2924	WASHER	8		
26	MT2886	CAP SCREW	8		
27	U12547	O-RING	8		
28	R117041	SCREW	2		
29	E98865	SUPPORT	1		
30	N14822	SELF-LOCKING SCREW	1		
31	38H1014	ELBOW FITTING	1		
32	38H1196	ADAPTER FITTING	1		
33	T78612	O-RING	1		
34	38H1175	ADAPTER FITTING	2		
35	38H1017	TEE FITTING	1		
36	38H1163	ADAPTER FITTING	2		
37	38H1005	ELBOW FITTING	1		
38	T77857	O-RING	7		

PC9108 70-88 4895 Self-Propelled Windrower / GROUND DRIVE MOTOR [02E15] PC9108 - OTTUMWA

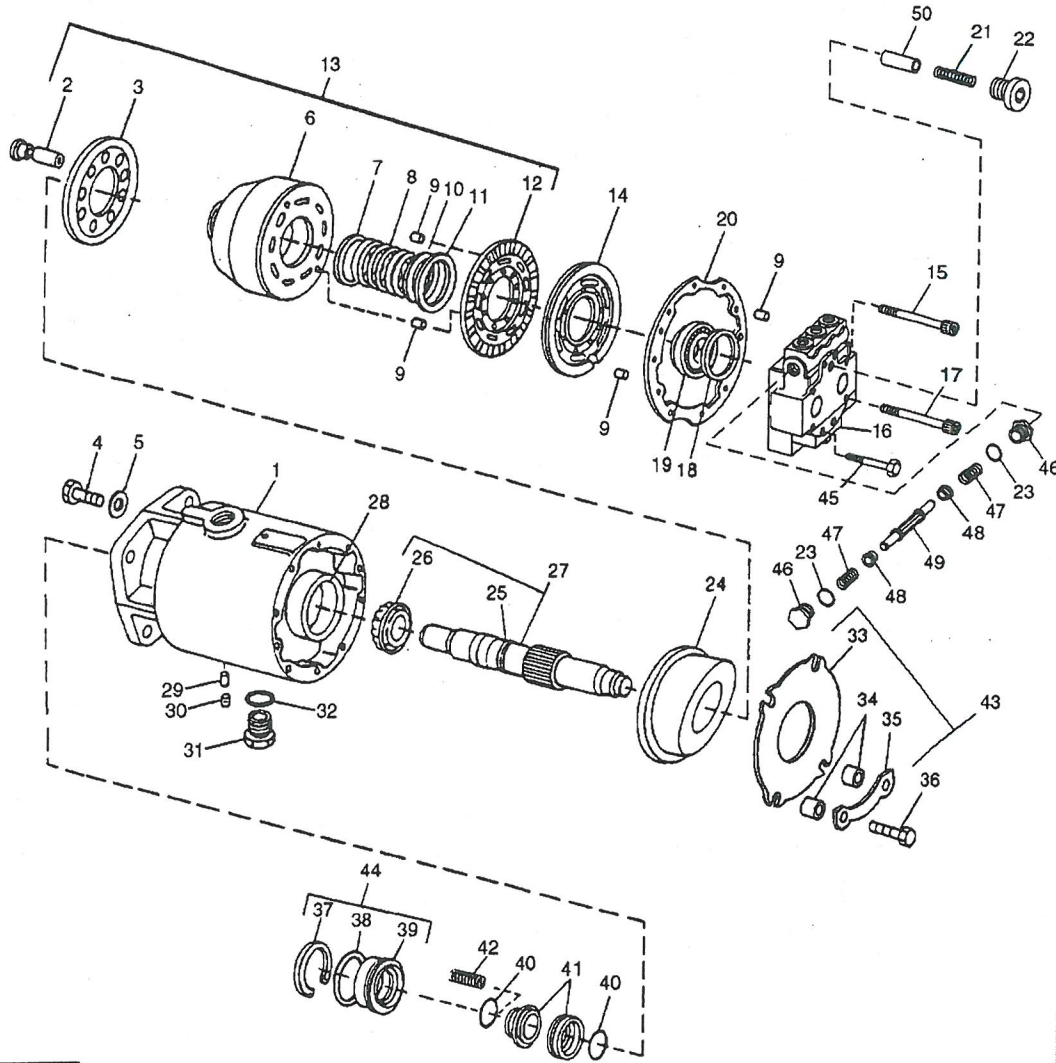


Part List
OTTUMWA

PC9108 70-88 4895 Self-Propelled Windrower / GROUND DRIVE MOTOR [02E15] PC9108 -

KEY	PART NO.	PART NAME	QTY	SERIAL NO.	REMARKS
1	MT2886	CAP SCREW	8		
2	MT2873	NUT	2		
3	E97425	PLATE	2		
4	E97426	O-RING	2		
5	U12547	O-RING	1		
6	R27175	DRAIN PLUG	1		
7	AE59088	STOP	2		
8	E97427	SHAFT	1		
9	AE59579	HYDRAULIC MOTOR	1	_____ -319999	
9	AE73785	HYDRAULIC MOTOR	1	320001-_____	
9	AE55993	SEAL KIT	1		
10	AMT1545	PLATE	1		
11	MT2902	CAP SCREW	2		
12	E97428	THRUST BEARING	1		
13	AE59089	CRADLE	1		
14	E97429	CAP SCREW	2		
15	MT2887	FOLLOWER	1		
16	AE46587	KIT	1		
17	MT2890	GASKET	1		
18	E97430	PLATE	1		
19	JD8806	NEEDLE BEARING	1		
20	E65290	SEAL	1		
21	M41029	SNAP RING	1		
22	E55717	WASHER	1		
23	E55716	SEAL	1		
24	N51168	SNAP RING	1		
25	M42702	SNAP RING	2		
26	E57805	THRUST BEARING RACE	2		
27	JD9961	THRUST BEARING	1		
28	AE38359	BEARING	1		
..	AE74215	KIT	1	320001-_____	STC REPAIR (-12)

PC9259 70-92 4995 Self-Propelled Windrower / PLATFORM DRIVE MOTOR [02E20] PC9259 - OTTUMWA



EP11948

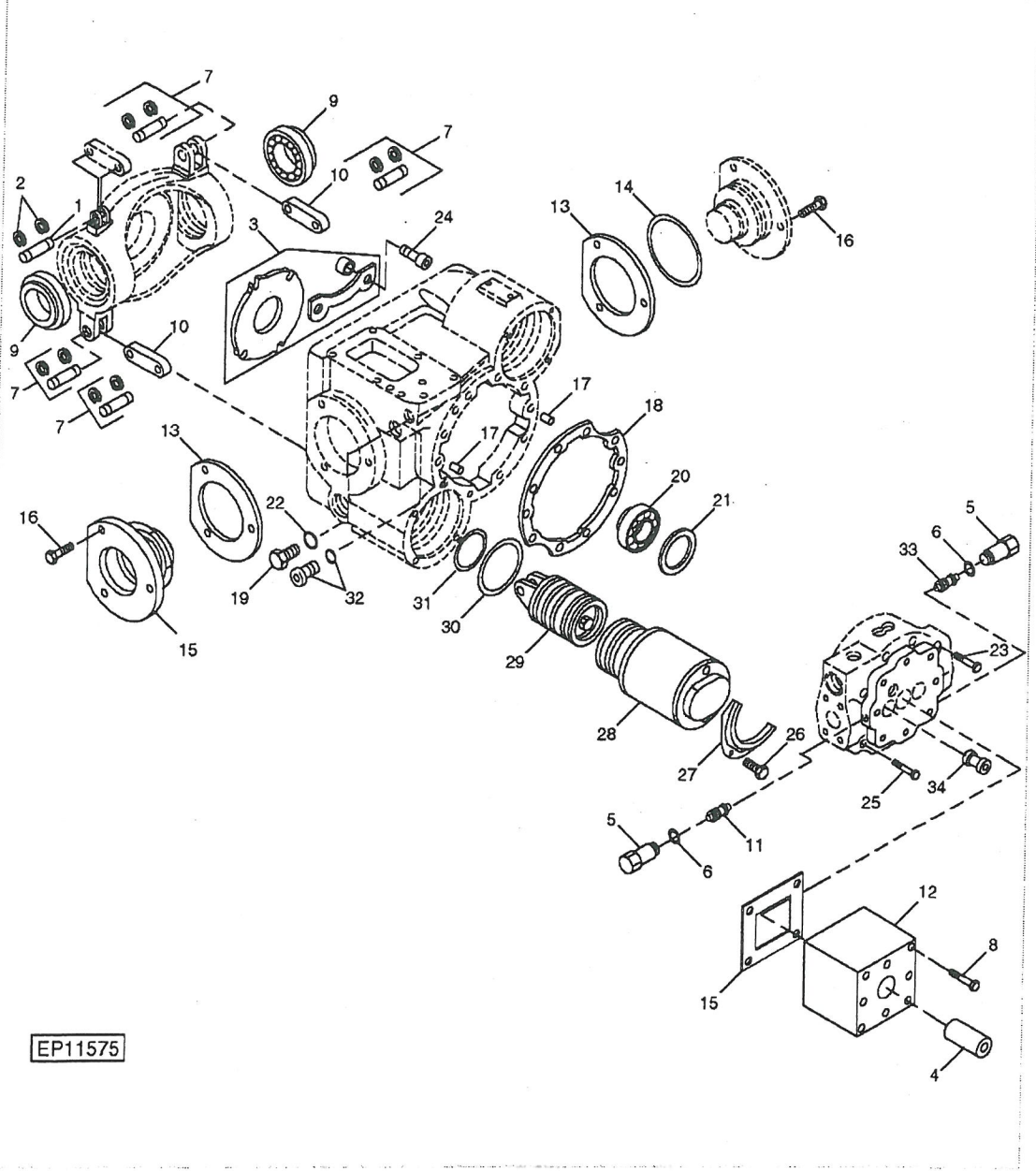
Part List

PC9259 70-92 4995 Self-Propelled Windrower / PLATFORM DRIVE MOTOR [02E20] PC9259 -

OTTUMWA

KEY	PART NO.	PART NAME	QTY	SERIAL NO.	REMARKS
1	HOUSING	1		(ORDER AE70994)
2	AH131169	PISTON	1		(C) (INCLUDES 9 PISTONS)
3	RETAINER	1		(C)
4	19H3192	SCREW	2		5/16" X 3"
5	H135571	SEALING WASHER	2		
6	CYLINDER BLOCK	1		(C)
7	WASHER	1		(C)
8	SPRING	1		(C)
9	H63271	PIN	5		(C)
10	WASHER	1		(C)
11	SNAP RING	1		(C)
12	H135500	PLATE	1		(C)
13	AH131171	ROTATOR KIT	1		INCLUDES PARTS MARKED (C)
14	H135509	PLATE	1		
15	19H3581	SCREW	2		3/8" X 3-1/4"
16	COVER	1		(ORDER AE70994)
17	19H2377	SCREW	4		3/8" X 3"
18	AN122509	SHIM	1		
19	AN122507	TAPERED ROLLER BEARING	1		
20	H214562	GASKET	1		(SUB FOR H135508)
21	E97442	COMPRESSION SPRING	1		
22	E97443	FITTING PLUG	1		
23	R26906	O-RING	2		
24	SWASH PLATE	1		(ORDER AE70994)
25	RING	1		(ORDER AE70994)
26	BEARING CUP	1		(ORDER AE70994)
27	AH170343	SHAFT	1		
28	JD9113	BEARING CUP	1		
29	H64813	DOWEL PIN	1		
30	15H558	PIPE PLUG	1		1/8"
31	R27175	DRAIN PLUG	1		
32	U12547	O-RING	1		
33	PLATE	1		(A)
34	SPACER	4		(A)
35	STRAP	1		(A)
36	19H3053	SCREW	4		5/16" X 1"
37	N126612	SNAP RING	1		(B)
38	R112857	O-RING	1		(B)
39	RETAINER	1		(B)
40	N196034	O-RING	2		
41	SEAL KIT	1		(ORDER AE70994)
42	N191174	COMPRESSION SPRING	6		
43	AH131391	HOLDER KIT	1		INCLUDES PARTS MARKED (A)
44	AE70192	SEAL KIT	1		INCLUDES PARTS MARKED (B)
45	19H2377	SCREW	2		3/8" X 3"
46	E97440	FITTING PLUG	2		
47	E97766	SPRING	2		
48	N126654	VALVE	2		
49	N128541	SPOOL	1		
50	E97441	PLUNGER	1		
..	AE70994	HYDRAULIC MOTOR	1		COMPLETE

PC9259 70-84 4995 Self-Propelled Windrower / PLATFORM DRIVE SHAFT, HOUSING, SWASHPLATE, AND SERVO CYLINDERS [02E13] PC9259 - OTTUMWA



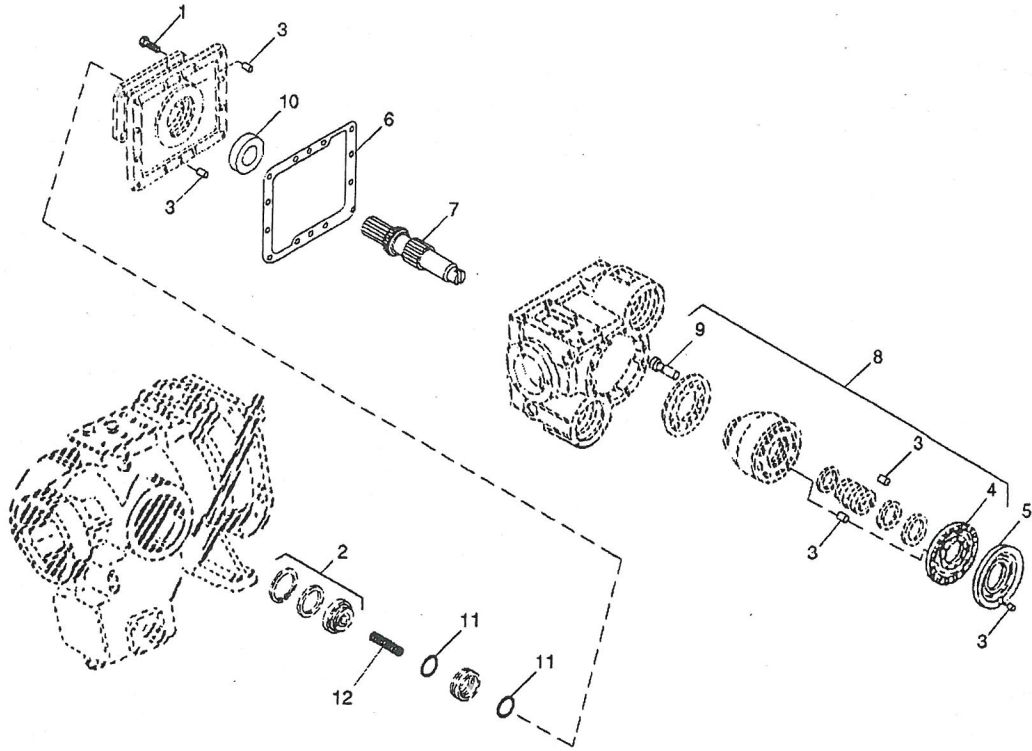
EP11575

Part List

PC9259 70-84 4995 Self-Propelled Windrower / PLATFORM DRIVE SHAFT, HOUSING, WASHPLATE, AND SERVO CYLINDERS [02E13] PC9259 - OTTUMWA

KEY	PART NO.	PART NAME	QTY	SERIAL NO.	REMARKS
1	N126603	PIN FASTENER	1		
2	M48000	SNAP RING	2		
3	AH131391	HOLDER KIT	1		
4	E97535	SPLINED COUPLING	1		
5	AT175471	FLOW CONTROL HYD. VALVE	2		
6	R26906	O-RING	2		
7	AN274375	PIN FASTENER	4		
8	19H3198	SCREW	4		1/2" X 3-1/4"
9	JD9076	BEARING CONE	2		
9	JD9133	BEARING CUP	2		
10	N126600	LINK	2		
11	AE59145	PRESSURE RELIEF VALVE	1		6000 PSI
12	E98327	HOUSING	1		
13	AN122506	SHIM	AR		FOUR, .002", .005", .010", AND .015"
14	T14065	O-RING	2		
15	E98328	GASKET	1		
16	19H2284	CAP SCREW	6		3/8" X 7/8"
17	H63271	PIN	2		
18	N376359	GASKET	1		(SUB FOR N126584)
19	R51031	FITTING	1		
20	AN122507	TAPERED ROLLER BEARING	1		
21	AN122509	SHIM	1		FIVE, .002", .005", .010, AND .015"
22	R28782	O-RING	2		
23	19H3230	SCREW	6		3/8" X 4-1/2"
24	19H3053	SCREW	4		5/16" X 1"
25	L26753	SCREW	2		
26	19H3176	SCREW	6		0.164" X 0.380"
27	N126602	RETAINER	2		SERVO
28	AZ46634	HOUSING	1		(SUB FOR AN122493) SERVO, INCLUDES R53543 AND M43518 O-RINGS
29	AH131172	PISTON	2		(INCLUDES KEYS 7 AND 10)
30	R53543	O-RING	2		
31	M43518	O-RING	2		
32	AN122518	FITTING PLUG	1		
32	R28782	O-RING	1		
33	AE59144	PRESSURE RELIEF VALVE	1		5000 PSI
34	AE59143	CHECK VALVE	2		
..	AE70117	HYDRAULIC PUMP	1	300000	
..	AE71529	HYDRAULIC PUMP	1	300001-319999	
..	AE73324	HYDRAULIC PUMP	1	320001-	

PC9259 70-82 4995 Self-Propelled Windrower / PLATFORM DRIVE PUMP, FRONT COVER AND SHAFT [02E11]
PC9259 - OTTUMWA



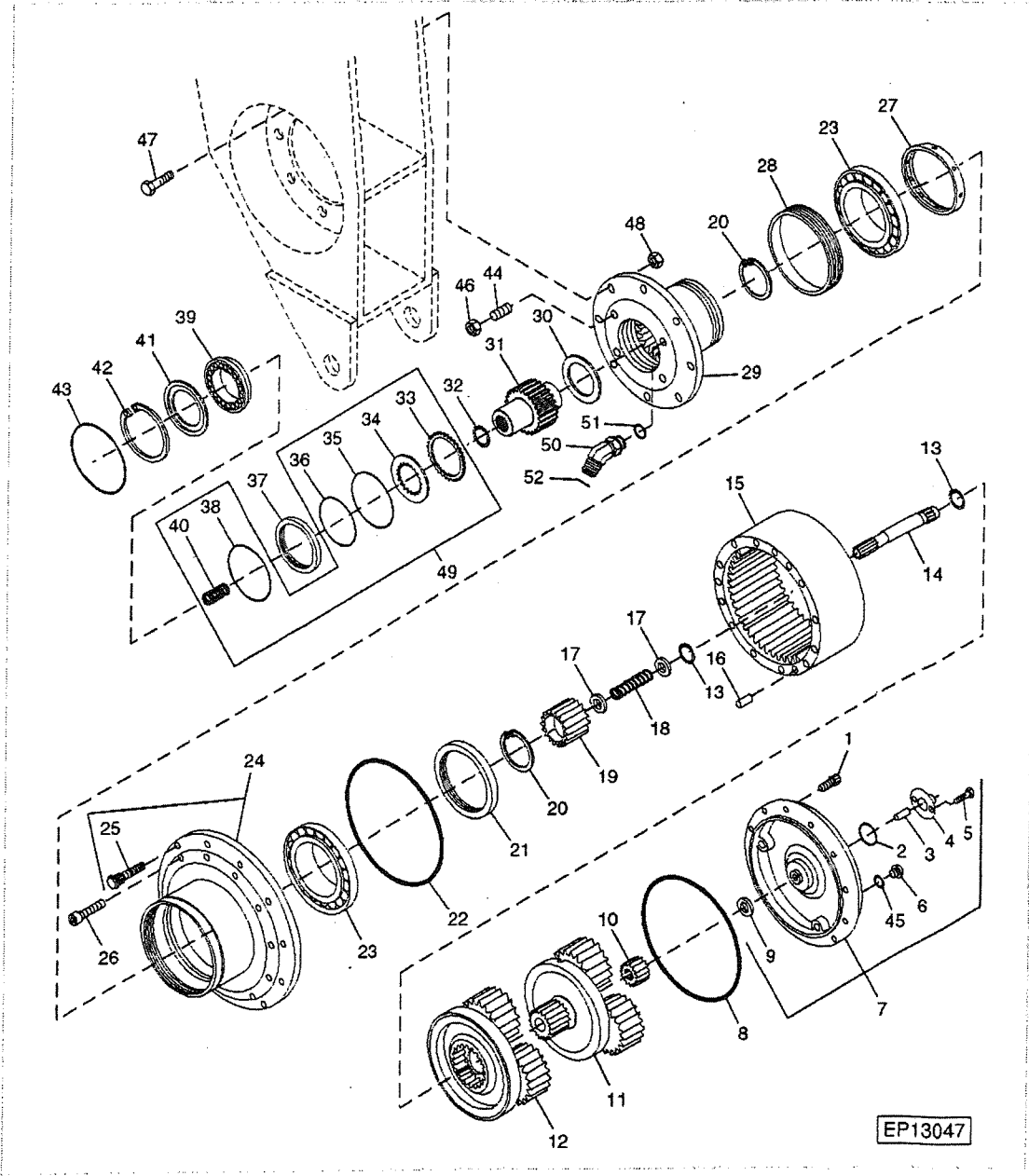
EP11991

Part List

PC9259 70-82 4995 Self-Propelled Windrower / PLATFORM DRIVE PUMP, FRONT COVER AND
SHAFT [02E11] PC9259 - OTTUMWA

KEY	PART NO.	PART NAME	QTY	SERIAL NO.	REMARKS
1	19H2676	CAP SCREW	12		3/8" X 1"
2	AE70192	SEAL KIT	1		
3	H63271	PIN	5		
4	H135500	PLATE	1		
5	E97523	PLATE	1		
6	N376360	GASKET	1		(SUB FOR N126585)
7	AE60103	SHAFT	1		
8	AH131171	ROTATOR KIT	1		
9	AH131169	PISTON	9		
10	JD9113	BEARING CUP	1		
11	N196034	O-RING	2		
12	N191174	COMPRESSION SPRING	6		
..	AE70117	HYDRAULIC PUMP	1	_____300000	COMPLETE
..	AE71529	HYDRAULIC PUMP	1	300001-319999	
..	AE73324	HYDRAULIC PUMP	1	320001-_____	

PC9108 50-10 4895 Self-Propelled Windrower / FINAL DRIVE - S.N. (350425 -) [01H11] PC9108 - OTTUMWA



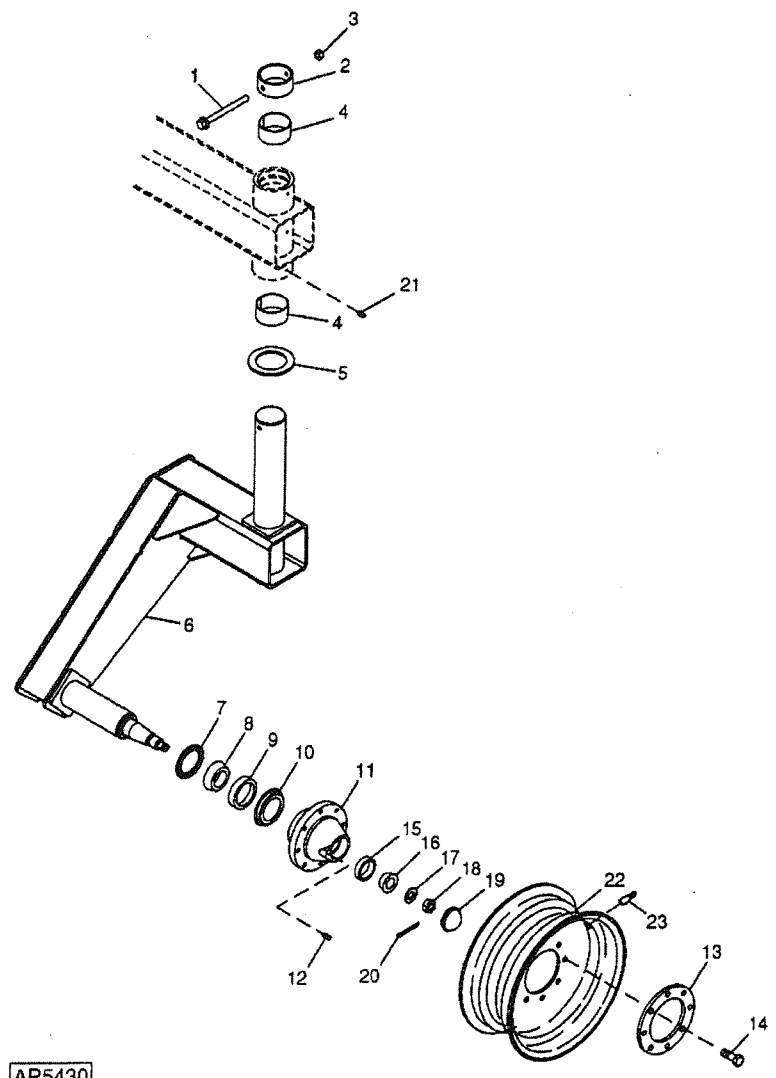
Part List

PC9108 50-10 4895 Self-Propelled Windrower / FINAL DRIVE - S.N. (350425 -) [01H11]

PC9108 - OTTUMWA

KEY	PART NO.	PART NAME	QTY	SERIAL NO.	REMARKS
1	19M8440	SCREW	12		(A) M10 X 25
2	R394R	O-RING	1		(A)
3	N302354	PLUNGER	1		(A)
4	N302355	COVER	1		(A)
5	19H2020	CAP SCREW	2		(A) 5/16" X 1/2"
6	N302356	PLUG	2		(A)
7	AN205690	COVER	1		(A)
8	T169329	O-RING	1		(A)
9	N302357	THRUST WASHER	1		(A)
10	E125140	SUN GEAR	1		(A)
11	AE70069	PLANET PINION CARRIER	1		(A) PRIMARY
12	AN205694	PLANET PINION	1		(A) SECONDARY
13	N302359	RING	2		(A)
14	N302360	SHAFT	1		(A)
15	N302361	RING GEAR	1		(A)
16	N302354	PLUNGER	3		(A)
17	N302364	WASHER	2		(A)
18	N302365	SPRING	1		(A)
19	N302367	SPLINED COUPLING	1		(A)
20	N302369	SNAP RING	2		(A)
21	N302370	LOCK NUT	1		(A)
22	N302371	O-RING	1		(A)
23	AN205695	CYLINDRICAL ROLLER BEARING	2		(A)
24	AE74799	HUB	1		(A)
25	FH307292	WHEEL BOLT	12		(A)
26	19M8341	SCREW	12		(A) M12 X 45
27	N302377	SPACER	1		(A)
28	N302378	SEAL	1		(A)
29	E130671	SPINDLE	1		(A)
30	E130672	DISK	1		(A)
31	E130675	SPLINED COUPLING	1		(A)
32	N302387	SNAP RING	1		(A)
33	DISK	1		(A) (ORDER AE73596)
34	DISK	1		(A) (ORDER AE73596)
35	E130678	O-RING	1		(A)
36	E130677	O-RING	1		(A)
37	E130676	SPACER	1		(A)
38	E130679	O-RING	1		(A)
39	E130680	PISTON	1		(A)
40	E130681	COMPRESSION SPRING	12		(A)
41	E130682	DISK	1		(A)
42	40M7285	SNAP RING	1		(A)
43	T42302	O-RING	1		(A)
44	K2019R	STUD	2		
45	A3190R	O-RING	2		(A)
46	14H1069	NUT	2		1/2"
47	19H3618	SCREW	8		5/8" X 2-1/2"
48	14H1083	NUT	8		5/8"
49	AFH203595	BRAKE KIT	1		(A)
50	38H1003	ELBOW FITTING	1		
51	R28782	O-RING	1		
52	T77814	O-RING	1		
..	AFH203306	PLANETARY ASSEMBLY	1		COMPLETE (INCLUDES PARTS MARKED (A))

PC2611 20-14 1900 Commodity Air Cart 270 BU. Tow-Between / CASTER WHEEL ASSEMBLY (TOW-BEHIND)
[01B06] PC2611 - HARV-SEEDING



AP5430

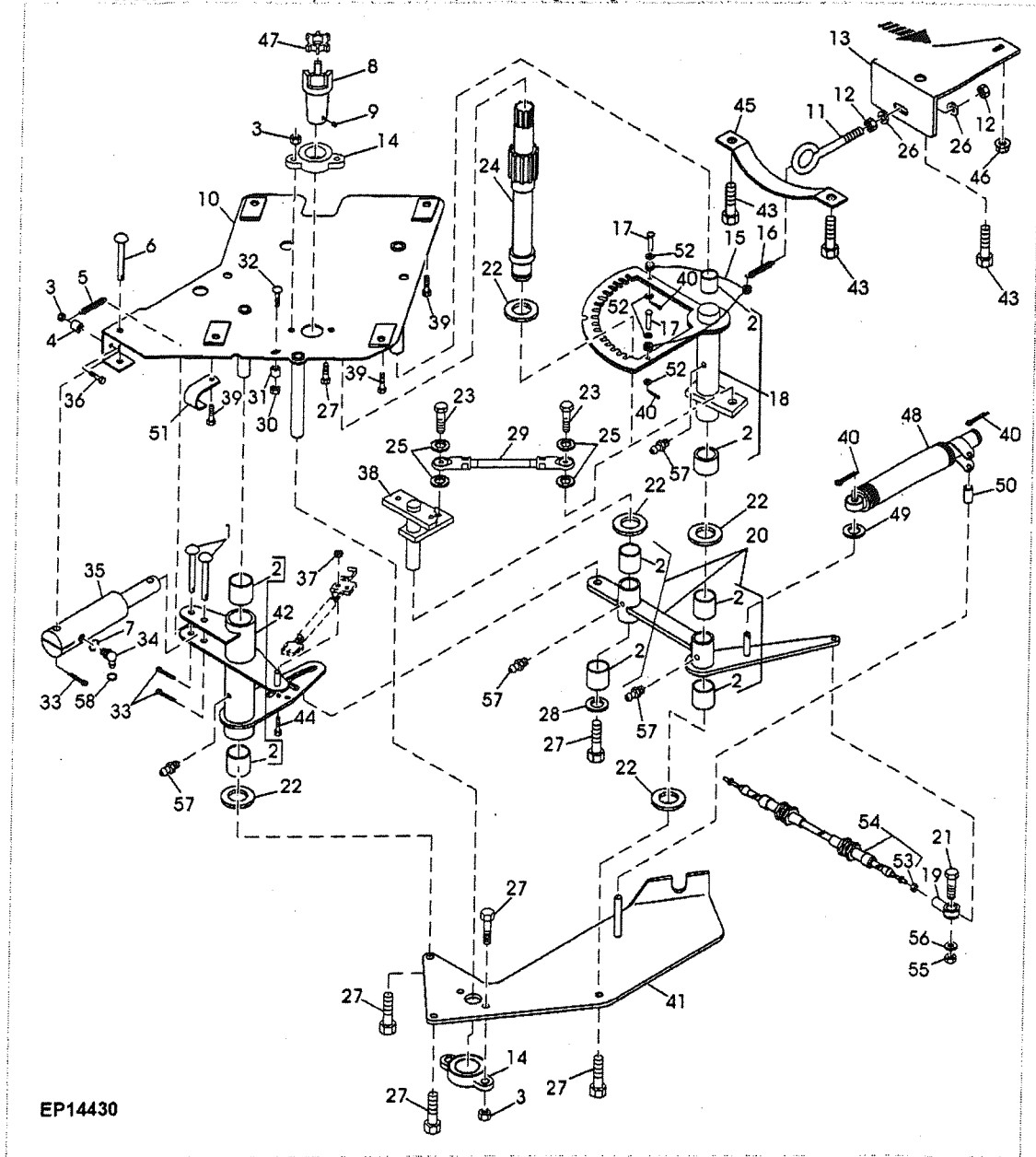
Part List

PC2611 20-14 1900 Commodity Air Cart 270 BU. Tow-Between / CASTER WHEEL ASSEMBLY

(TOW-BEHIND) [01B06] PC2611 - HARV-SEEDING

KEY	PART NO.	PART NAME	QTY	SERIAL NO.	REMARKS
1	19M7838	SCREW	1		M12 X 130
2	A59464	BUSHING	1		
3	A31867	LOCK NUT	1		
4	A59834	BEARING	2		
5	A59681	THRUST WASHER	1		
6	AA46442	CASTER	1		R.H.
6	AA46443	CASTER	1		L.H.
7	AR27806	SEAL	1		
8	JD8131	BEARING CONE	1		
9	JD7439	BEARING CUP	1		
10	R28574	SEAL	1		
11	R113716	HUB	1		
12	22H841	SET SCREW	1		1/4" X 1/4", (SUB FOR JD7797) (THIS APPLICATION ONLY)
13	H84375	RING	1		
14	19M7409	CAP SCREW	8		M16 X 50
15	JD7266	BEARING CUP	1		
16	JD10190	BEARING CONE	1		
17	R28575	WASHER	1		1-1/32" X 2-1/16" X 0.180"
18	14M7519	NUT	1		M24
19	DT2127W	CAP	1		
20	11M7030	COTTER PIN	1		5 X 40 MM
21	JD7844	LUBRICATION FITTING	3		
22	AA41277	WHEEL	1		16.1 X W14C (16.5L-16.1 TIRE); 8-BOLT; 195, 250 AND 270 BU.
22	AA41278	WHEEL	1		16.1 X W18C (21.5L-16.1 TIRE); 8-BOLT; 340, 350 AND 430 BU.
23	AN132749	TIRE VALVE STEM	1		

PC9108 60-2 4895 Self-Propelled Windrower / STEERING [01H24] PC9108 - OTTUMWA



EP14430

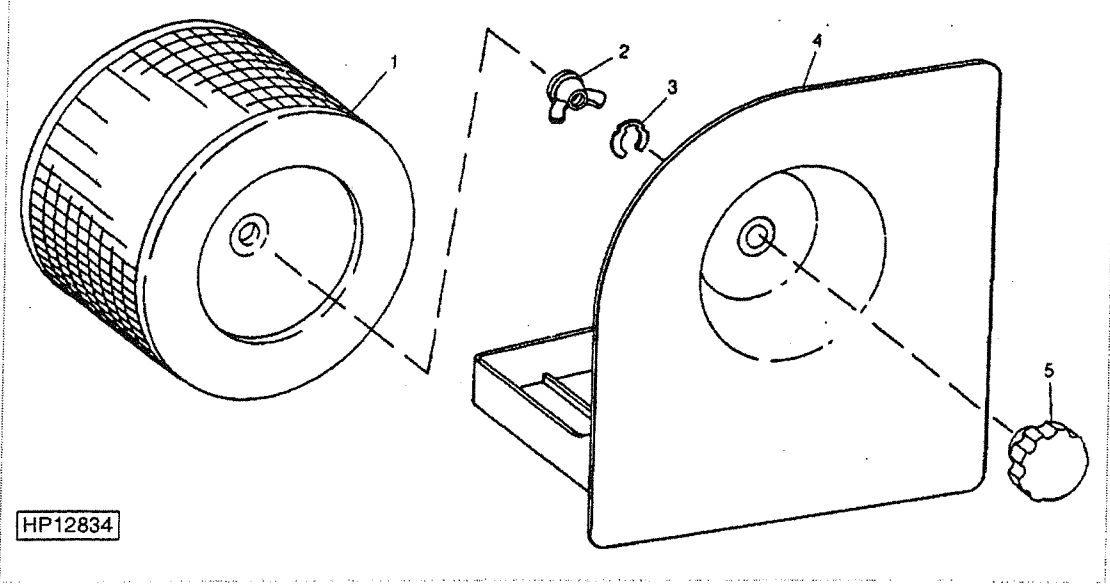
Part List

PC9108 60-2 4895 Self-Propelled Windrower / STEERING [01H24] PC9108 - OTTUMWA

KEY	PART NO.	PART NAME	QTY	SERIAL NO.	REMARKS
1	E90727	PIN FASTENER	2		
2	R26182	BUSHING	4		
3	14M7298	FLANGE NUT	5		M8
4	28H1941	BUSHING	1		0.364" X 0.540" X 1-1/4"
5	M73114	EXTENSION SPRING	1		
6	W41461	PIN FASTENER	1		
7	R28782	O-RING	1		
8	H134623	SPLINED COUPLING	1		
9	22M7072	SET SCREW	2		M6 X 10
10	AE51917	BRACKET	1		
11	M84349	EYEBOLT	1		
12	14H1076	NUT	2		3/8"
13	E93282	ANGLE	1		(SUB E126550)
13	E126550	ANGLE	1		
14	AE42932	BEARING	2		
15	AE73206	CABLE	1		(SUB FOR AE51780)
16	E92252	EXTENSION SPRING	1		
17	T16193	PIN	2		
18	AE70697	GEAR	1		(SUB FOR AE57059)
19	RE56489	LINK END	1		
20	AE70695	ARM	1		(SUB FOR AE59724)
21	19M7863	SCREW	1		M6 X 25
22	24H1424	WASHER	5		29/32" X 1-1/2" X 0.060"
23	19H3239	CAP SCREW	2		3/8" X 1-1/4"
24	AE59445	SHAFT	1		
25	E66245	WASHER	4		
26	24M7028	WASHER	2		10.500 X 20 X 2 MM
27	19M7866	SCREW	8		M8 X 20
28	24H1291	WASHER	1		21/64" X 1-15/32" X 7/64"
29	AE57071	TIE ROD ASSEMBLY	1		
30	14M7291	FLANGE NUT	1		M16
31	28H2627	BUSHING	1		0.742" X 1.050" X 2-1/4"
32	03M7230	BOLT	1		M16 X 90
33	11M7015	COTTER PIN	3		3.200 X 25 MM
34	AH63565	ELBOW FITTING	1	319999	
34	38H1003	ELBOW FITTING	1	320001-	
35	AE37051	HYDRAULIC CYLINDER	1		(SUB AH216150) SEE ALSO STEERING CYLINDER
35	AH216150	HYDRAULIC CYLINDER	1		
36	03M7189	BOLT	1		M8 X 45
37	14H1026	NUT	2		0.138"
38	AE56340	PIVOT	1		
39	19M7868	SCREW	4		M8 X 30
40	11M7080	COTTER PIN	4		2.500 X 16 MM
41	AE59731	PLATE	1		
42	AE70699	BRACKET	1		(SUB FOR AE57073)
43	37M7058	SCREW	3		M8 X 20
44	21H1353	SCREW	2		0.138" X 3/4"
45	E93518	ISOLATOR	1		
46	14M7303	FLANGE NUT	1		M6
47	H134624	ISOLATOR	1		
48	AM102286	ABSORBER	1		
49	M40815	BUSHING	1		
50	E78406	BUSHING	1		

51	AH89557	CLIP	1	
52	24H1287	WASHER	4	9/32" X 5/8" X 0.065"
53	14H649	NUT	2	1/4"
54	AES9976	CABLE	1	
55	14M7528	LOCK NUT	1	M6
56	24M7054	WASHER	2	6.400 X 12 X 1.600 MM
57	JD7844	LUBRICATION FITTING	4	
58	T77814	O-RING	1	320001-

PC9108 80-25 4895 Self-Propelled Windrower / CAB AIR FILTER AND HOUSING [02G04] PC9108 - OTTUMWA



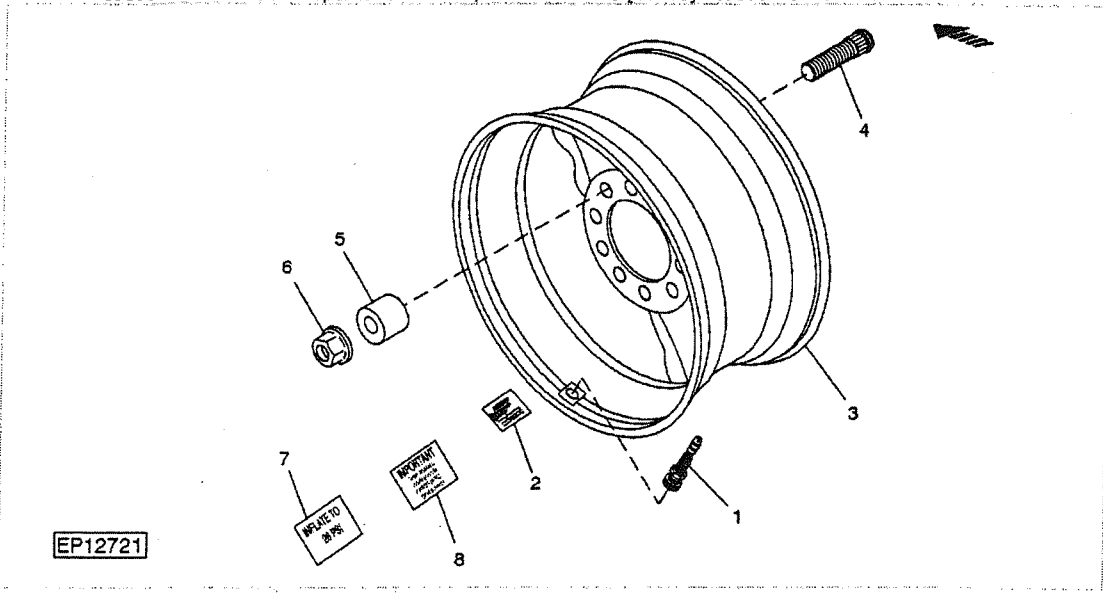
Part List

PC9108 80-25 4895 Self-Propelled Windrower / CAB AIR FILTER AND HOUSING [02G04]

PC9108 - OTTUMWA

KEY	PART NO.	PART NAME	QTY	SERIAL NO.	REMARKS
1	AH115833	AIR FILTER	1		
2	AH132783	NUT	1		
3	R58806	SNAP RING	1		
4	AH207302	DOOR	1		(SUB FOR AH120419)
5	AH218090	KNOB	1		(SUB FOR AH120446)
..	H150119	LABEL	1		FILTER SERVICE

PC9108 50-1 4895 Self-Propelled Windrower / DRIVE WHEELS [01H03] PC9108 - OTTUMWA

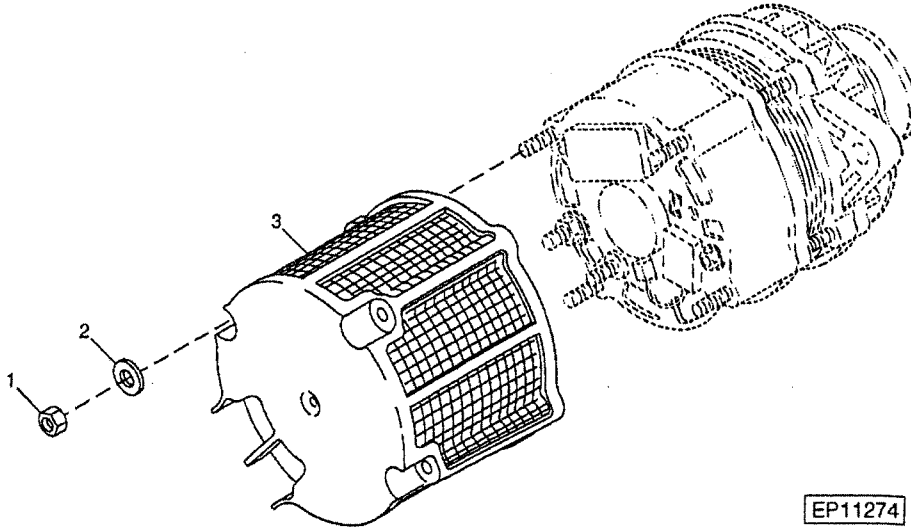


Part List

PC9108 50-1 4895 Self-Propelled Windrower / DRIVE WHEELS [01H03] PC9108 - OTTUMWA

KEY	PART NO.	PART NAME	QTY	SERIAL NO.	REMARKS
1	AT25226	TIRE VALVE STEM	1		
2	E73599	LABEL	1	350000	WHEEL BOLT TORQUE
3	AE71771	WHEEL	1		(SUB FOR AE59529) 16" X 26" (18.4 X 26 TIRE)
3	AE74777	WHEEL	1		23.1R26
4	E125142	WHEEL BOLT	12		
5	E74685	SPACER	12		
6	E69392	NUT	12		
7	E95992	LABEL	1	181000	TIRE INFLATION
8	H111538	LABEL	1	181001-350000	(USE WITH AE71771) TIRE PRESSURE
8	H108604	LABEL	1		(USE WITH AE74777) TIRE PRESSURE

PC9108 20-70 4895 Self-Propelled Windrower / ALTERNATOR SCREEN [01D10] PC9108 - OTTUMWA



Part List

PC9108 20-70 4895 Self-Propelled Windrower / ALTERNATOR SCREEN [01D10] PC9108 -

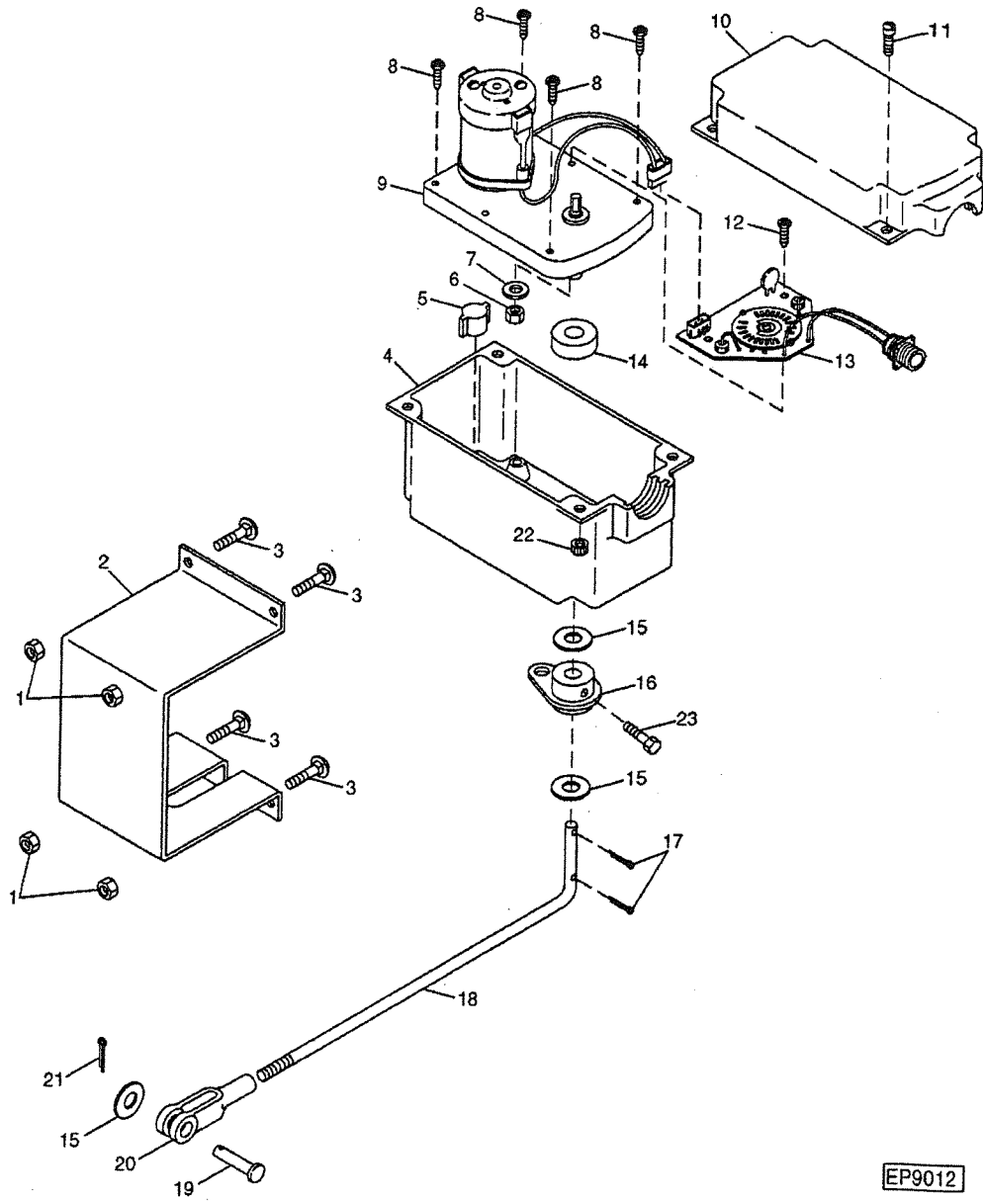
OTTUMWA

KEY	PART NO.	PART NAME	QTY	SERIAL NO.	REMARKS
1	14M7360	LOCK NUT	4	M5	
2	24M7087	WASHER	4		5.500 X 10 X 1 MM
3	AH138291	SCREEN	1		(SUB FOR AT207952, THIS APPLICATION)

Baler speed

PC9108 80-2 4895 Self-Propelled Windrower / THROTTLE CONTROL MOTOR AND BRACKET [02F05] PC9108

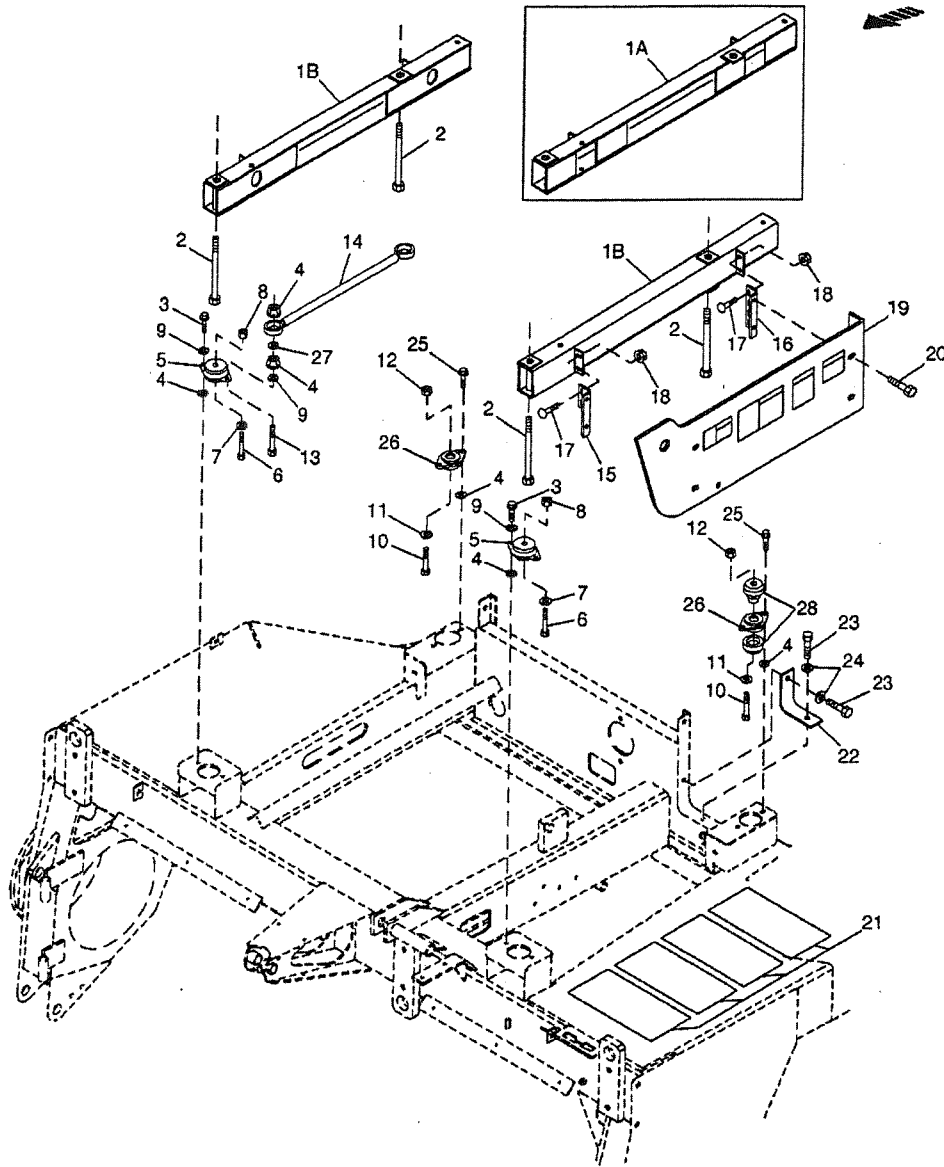
- OTTUMWA



Part List PC9108 80-2 4895 Self-Propelled Windrower / THROTTLE CONTROL MOTOR AND BRACKET
 [02F05] PC9108 - OTTUMWA

KEY	PART NO.	PART NAME	QTY	SERIAL NO.	REMARKS
1	E63525	NUT	4		
2	E89593	BRACKET	1		
3	03M7184	BOLT	4		M8 X 20
4	E88876	BOX	1		
5	H133981	SEAL	1		
6	14H1026	NUT	2		0.138"
7	12H314	LOCK WASHER	2		0.138"
8	H144032	SCREW	4		
9	AH128865	ELECTRIC MOTOR	1		
10	E88875	BOX	1		
11	21M7250	SCREW	4		M4 X 12
12	21H1184	SCREW	2		0.138" X 1-1/8"
13	AH139987	PRINTED CIRCUIT	1		
14	M121T	WASHER	1		
15	24M7054	WASHER	3		6.400 X 12 X 1.600 MM
16	AE54451	LEVER	1		
17	11M7094	COTTER PIN	2		1.600 X 16 MM
18	E89592	HOOK BOLT	1		THROTTLE
19	P47303	PIN FASTENER	1		ROD END
20	M3742T	YOKE	1		
21	11M7094	COTTER PIN	1		1.600 X 16 MM
22	14M7139	NUT	4		M4
23	19M7077	CAP SCREW	1		M6 X 20

PC9108 80-64 4895 Self-Propelled Windrower / CAB SUPPORTS AND ISOLATORS [02H16] PC9108 - OTTUMWA



EP12984

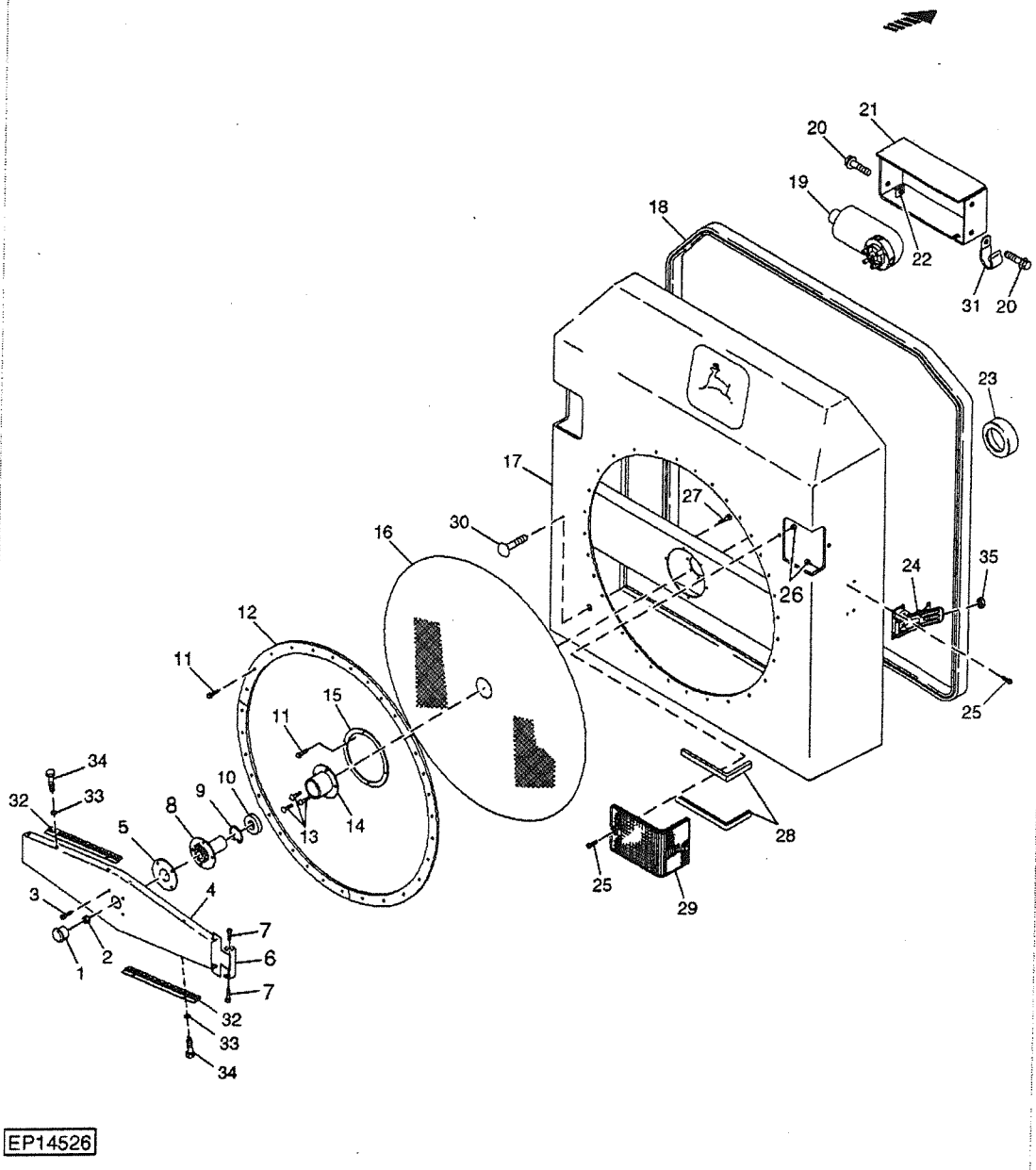
Part List

PC9108 80-64 4895 Self-Propelled Windrower / CAB SUPPORTS AND ISOLATORS [02H16]

PC9108 - OTTUMWA

KEY	PART NO.	PART NAME	QTY	SERIAL NO.	REMARKS
1A	AE59179	CHANNEL	2		(SUB AE73805)
1B	AE73805	CHANNEL	2		
2	19M7954	CAP SCREW	4		M16 X 150
3	19M7785	SCREW	3		M10 X 25
4	E63526	NUT	9		
5	AE59738	ISOLATOR	2		(SUB AE73843)
5	AE73843	ISOLATOR	2		
6	19M7845	SCREW	2		M16 X 90
7	T146246	WASHER	2		
8	A31869	LOCK NUT	2		
9	24M7178	WASHER	4		10.500 X 30 X 2.500 MM
10	19M7845	SCREW	2		M16 X 90
11	R111207	WASHER	2		
12	A31869	LOCK NUT	2		
13	19M7835	SCREW	1		M10 X 35
14	AE70409	GROUND CABLE	1		
15	AE52711	SUPPORT	2		FRONT
16	AE52712	SUPPORT	2		REAR
17	03M7184	BOLT	8		M8 X 20
18	E63525	NUT	8		
19	AE56986	PANEL	1		L.H. WITH DECALS
19	AE56989	PANEL	1		R.H. WITH DECALS
20	37M7058	SCREW	8		M8 X 20
21	H136015	MAT	4		
22	E87677	ISOLATOR	1		
23	37M7086	SCREW	2		M10 X 20
24	24M7180	WASHER	2		13 X 37 X 3 MM
25	19M7785	SCREW	4		M10 X 25
26	AE59344	SUPPORT	2		
27	24M7028	WASHER	2		10.500 X 20 X 2 MM
28	AT170854	ISOLATOR	2		

PC9108 90-16 4895 Self-Propelled Windrower / RADIATOR AIR SCREEN DOOR [02I11] PC9108 - OTTUMWA



EP14526

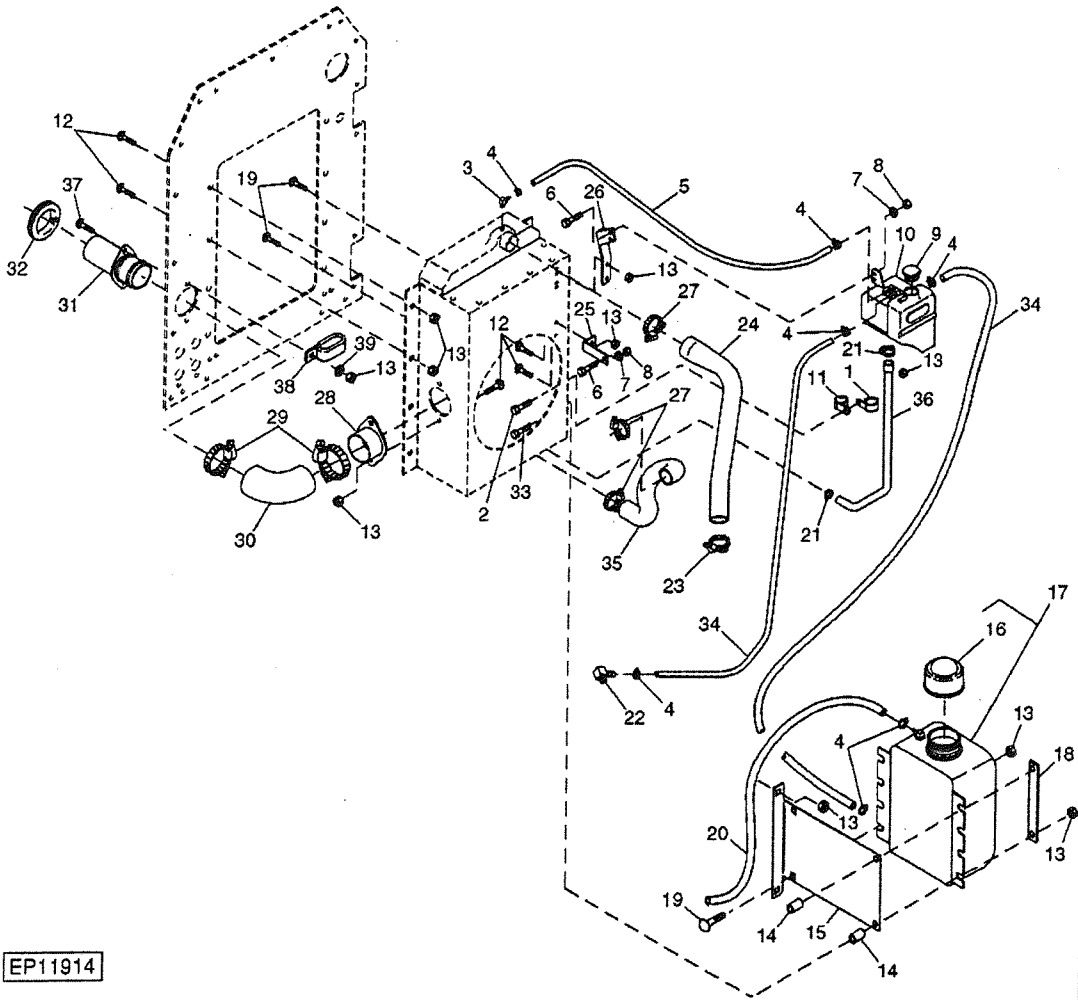
Part List

PC9108 90-16 4895 Self-Propelled Windrower / RADIATOR AIR SCREEN DOOR [02I11]

PC9108 - OTTUMWA

KEY	PART NO.	PART NAME	QTY	SERIAL NO.	REMARKS
1	H105999	PLUG	1		
2	14M7298	FLANGE NUT	1		M8
3	19M7866	SCREW	4		M8 X 20
4	E130280	ARM	1		(SUB FOR E93934)
5	E87937	WASHER	AR		
6	E87940	CHANNEL	2		
7	37M7039	SCREW	4		
8	E94923	DRIVER	1		
9	40M7044	SNAP RING	1		
10	JD7147	BALL BEARING	1		
11	37M7039	SCREW	42		
12	E93552	STRAP	3		
13	19M7863	SCREW	3		M6 X 25
14	E94922	SUPPORT	1		
15	E85490	WASHER	1		
16	E93549	SCREEN	1		
17	AE73506	DOOR	1		(SUB FOR AE56422)
18	E86325	ISOLATOR	1		
19	AFH202900	ELECTRIC MOTOR	1		(SUB FOR AE55398)
19	R78063	ELEC. CONNECTOR SEAL	2		
19	S7M7285	ELEC. CONNECTOR TERMINAL	2		
19	S7M7304	ELECTRICAL CONNECTOR ASSY	1		
19	S7M7306	ELEC. CONNECT LOCKING DEVICE	1		
20	19M7866	SCREW	4		M8 X 20
21	E127378	COVER	1		(SUB FOR E93716)
22	M84971	NUT	4		
23	AE51949	ISOLATOR	1		
24	AH87272	LATCH	1		(ALSO ORDER 14H786)
25	21M7271	SCREW	8		M5 X 16
26	14M7297	NUT	8		M5
27	19M7864	SCREW	4		M8 X 12
28	AE53200	ISOLATOR	4		
29	AH123017	TAIL LAMP	2		
30	03M7183	BOLT	1		M8 X 16
31	AH89557	CLIP	1		
32	AE73209	BRUSH	2		(A)
33	24M7087	WASHER	4		(A) 5.500 X 10 X 1 MM
34	37M7039	SCREW	4		(A)
35	14H786	NUT	1		
..	AE73583	KIT	1		(SUB (2) AE73209, (4) 24M7087 AND (4) 37M7039) POWER SCREEN CLEANER BRUSH (INCLUDES PARTS MARKED (A))

PC9108 90-6 4895 Self-Propelled Windrower / RADIATOR [02I01] PC9108 - OTTUMWA

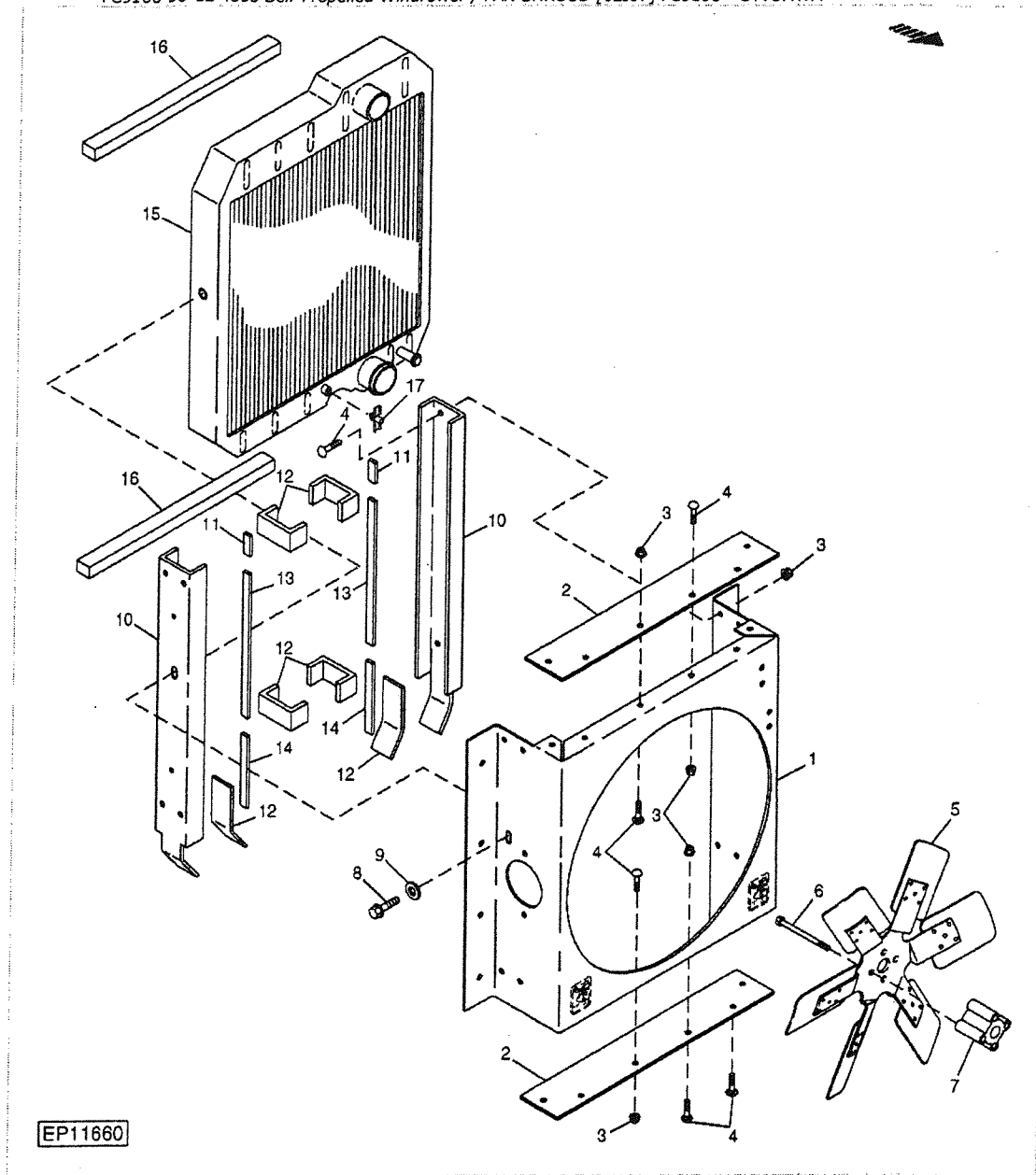


Part List

PC9108 90-6 4895 Self-Propelled Windrower / RADIATOR [02I01] PC9108 - OTTUMWA

KEY	PART NO.	PART NAME	QTY	SERIAL NO.	REMARKS
1	AH90990	CLIP	1		
2	19M7865	SCREW	1		M8 X 16
3	R117761	ELBOW FITTING	1		90 DEGREE
4	TY22462	CLAMP	7		
5	R125166	HOSE	1		CUT TO 370 MM (14.5")
6	19M7775	SCREW	3		M6 X 16
7	24M7139	WASHER	3		6.400 X 18 X 1.600 MM
8	14M7528	LOCK NUT	3		M6
9	RE43593	FILLER CAP	1		
10	RE194691	TANK	1		(SUB FOR RE154390)
11	AH89557	CLIP	1		
12	03M7183	BOLT	13		M8 X 16
13	E63525	NUT	AR		
14	28H3430	BUSHING	2		
15	E98413	ANGLE	1		
16	AT106413	CAP	1		
17	AT162597	TANK	1		(INCLUDES AT106413)
18	E92685	STRAP	2		
19	03M7184	BOLT	4		M8 X 20
20	R125166	HOSE	1		CUT TO 655 MM (25.75")
21	TY22467	CLAMP	2		
22	T28078	ELBOW FITTING	1		
23	TY22470	CLAMP	1		
24	E85125	HOSE	1		UPPER RADIATOR
25	E85614	ANGLE	1		
26	E85613	SUPPORT	1		
27	TY22472	CLAMP	3		(SUB FOR AR21999)
28	AE52602	TUBE	1		
29	TY22490	HOSE CLAMP	2		
30	H88782	HOSE	1		
31	AE56430	TUBE	1		
32	T61798	ISOLATOR	1		CUT 325 MM (12.8")
33	03M7223	BOLT	2		M8 X 60
34	R125166	HOSE	2		
35	E85126	HOSE	1		LOWER RADIATOR
36	E85160	HOSE	1		RADIATOR TO COOLANT TANK
37	19M7867	SCREW	1	_____ -300000	M8 X 25
37	19M7866	SCREW	1	300001-_____	M8 X 20
38	R35668	CLAMP	1	_____ -300000	
39	24M7207	WASHER	1	_____ -300000	8.400 X 24 X 2 MM

PC9108 90-12 4895 Self-Propelled Windrower / FAN SHROUD [02I07] PC9108 - OTTUMWA

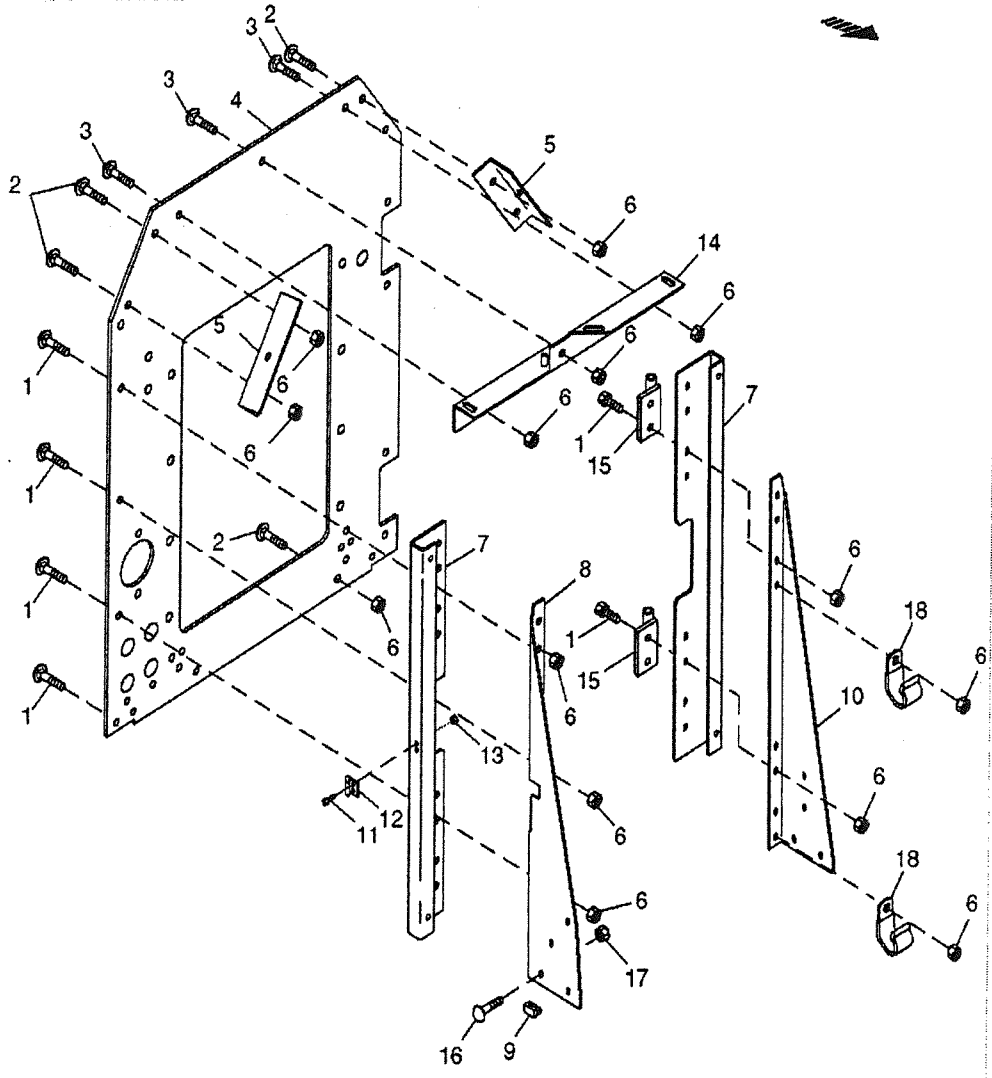


Part List

PC9108 90-12 4895 Self-Propelled Windrower / FAN SHROUD [02I07] PC9108 - OTTUMWA

KEY	PART NO.	PART NAME	QTY	SERIAL NO.	REMARKS
1	AE70026	SHROUD	1		
2	E85198	STRAP	2		
3	E63525	NUT	20		
4	03M7183	BOLT	20		M8 X 16
5	AE59665	FAN	1		
6	19M7809	SCREW	4		M10 X 70
7	R90563	SPACER	1		
8	R108180	BOLT	2		
9	24M7047	WASHER	2		13 X 24 X 2.500 MM
10	E96124	CHANNEL	2		
11	AE52706	ISOLATOR	2		
12	RE47389	KIT	1		
13	AE52705	ISOLATOR	2		
14	AE52704	ISOLATOR	2		
15	RE63188	RADIATOR	1		
16	AE52703	ISOLATOR	2		
17	AT13740	DRAIN VALVE	1		

PC9108 90-10 4895 Self-Propelled Windrower / REAR BULKHEAD SUPPORTS, ANGLES, AND DOOR CHANNELS [02105] PC9108 - OTTUMWA



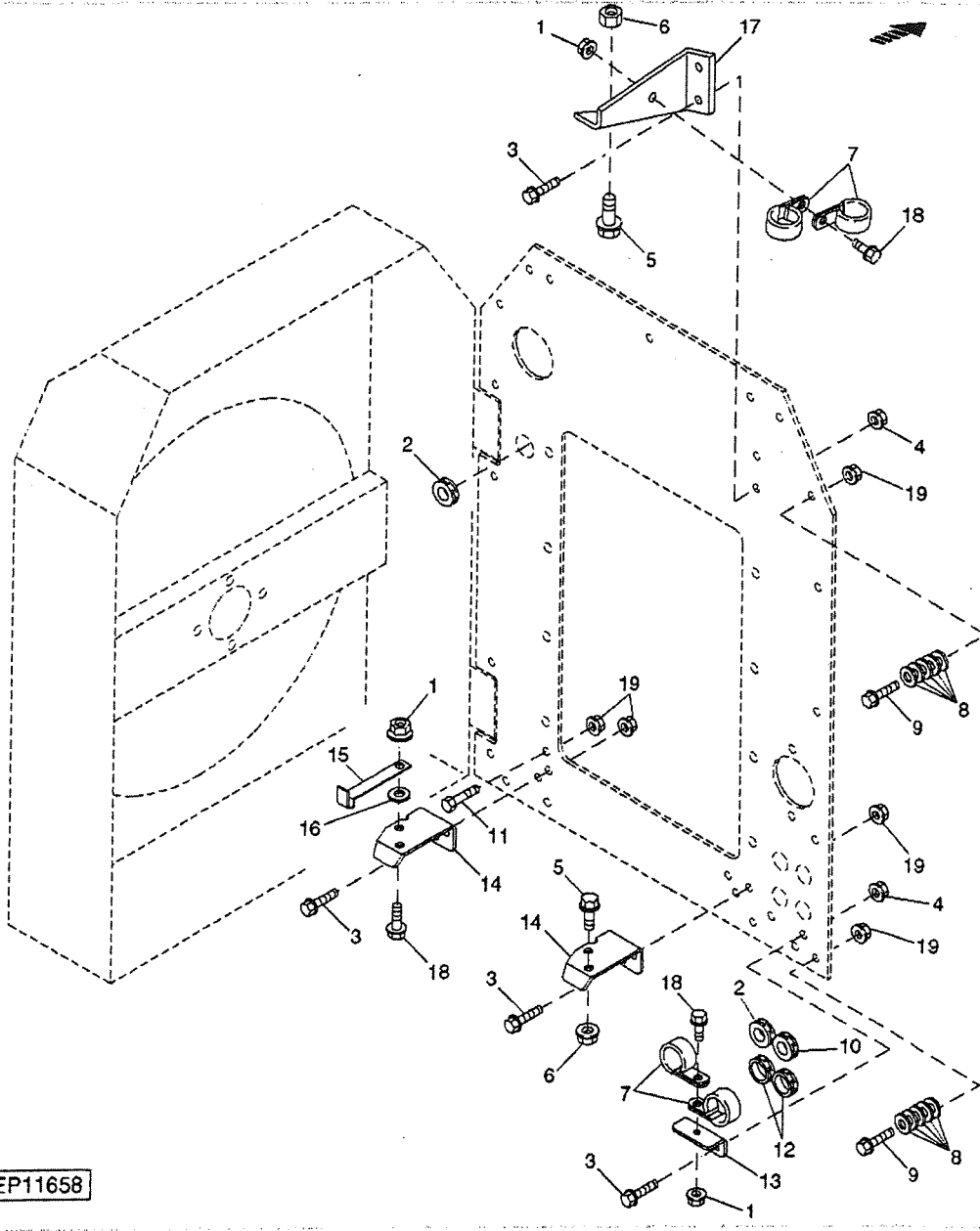
EP11659

Part List

PC9108 90-10 4895 Self-Propelled Windrower / REAR BULKHEAD SUPPORTS, ANGLES, AND
DOOR CHANNELS [02105] PC9108 - OTTUMWA

KEY	PART NO.	PART NAME	QTY	SERIAL NO.	REMARKS
1	03M7185	BOLT	12		M8 X 25
2	03M7184	BOLT	6		M8 X 20
3	03M7183	BOLT	3		M8 X 16
4	E96818	SUPPORT	1		
5	E85592	ANGLE	2		
6	E63525	NUT	AR		
7	E85598	CHANNEL	2		
8	E96928	ANGLE	1		R.H.
9	E43961	BUMPER	2		
10	E96927	ANGLE	1		L.H.
11	21M7271	SCREW	2		M5 X 16
12	E88884	CATCH	1		
13	14M7297	NUT	2		M5
14	E97975	ANGLE	1		
15	AE55776	PIVOT	2		
16	19M7785	SCREW	4		M10 X 25
17	E63526	NUT	4		
18	AH89557	CLIP	2		

PC9108 90-8 4895 Self-Propelled Windrower / A/C CONDENSOR AND OIL COOLER BRACKETS [02103]
PC9108 - OTTUMWA



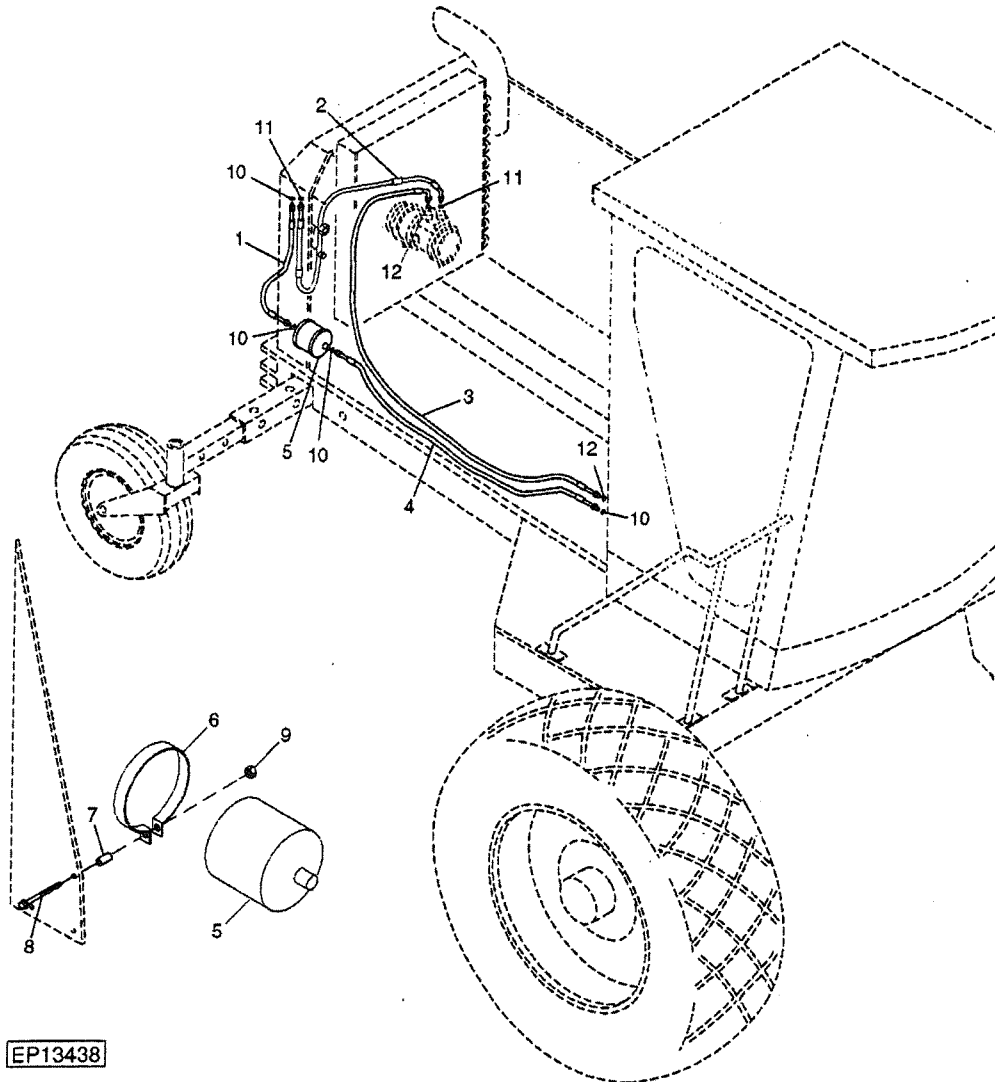
Part List

PC9108 90-8 4895 Self-Propelled Windrower / A/C CONDENSOR AND OIL COOLER BRACKETS

[02103] PC9108 - OTTUMWA

KEY	PART NO.	PART NAME	QTY	SERIAL NO.	REMARKS
1	E63526	NUT	3		
2	R45210	GROMMET	2		
3	19M7866	SCREW	AR		M8 X 20
4	14M7298	FLANGE NUT	4		M8
5	19M7787	SCREW	2		M12 X 20
6	A31867	LOCK NUT	2		
7	R72659	CLAMP	4		(SUB FOR T26955, THIS APPLICATION)
8	24M7055	WASHER	14		8.400 X 16 X 1.600 MM, 7 PER CAP SCREW
9	19M7867	SCREW	2		M8 X 25
10	R38454	GROMMET	1		
11	19M7932	CAP SCREW	1		M8 X 16
12	MT1215	GROMMET	2		
13	E88904	ANGLE	1		
14	E98587	ANGLE	2		
15	E58521	CLIP	1		
16	24M7028	WASHER	5		10.500 X 20 X 2 MM
17	AE52612	BRACKET	1		
18	19M7786	SCREW	3		M10 X 30
19	E63525	NUT	9		

PC9108 80-60 4895 Self-Propelled Windrower / AIR CONDITIONING HOSES AND RECEIVER DRYER [02H12]
PC9108 - OTTUMWA



EP13438

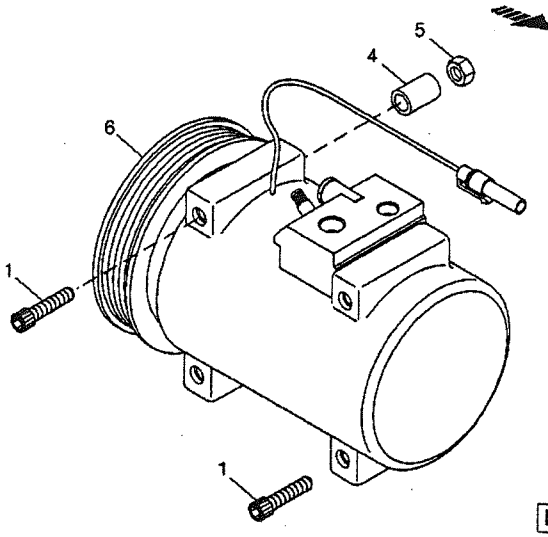
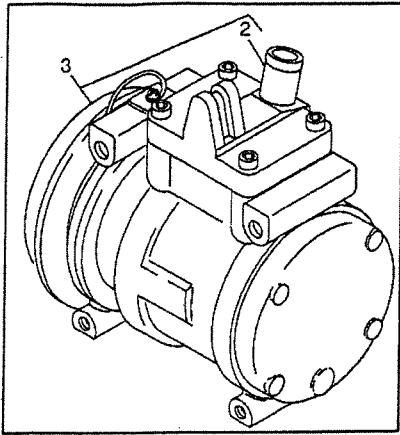
Part List

PC9108 80-60 4895 Self-Propelled Windrower / AIR CONDITIONING HOSES AND RECEIVER

DRYER [02H12] PC9108 - OTTUMWA

KEY	PART NO.	PART NAME	QTY	ENGINE SERIAL NO.	REMARKS
1	AE73288	HOSE	1		(SUB FOR AE52173) CONDENSOR TO RECEIVER/DRYER
2	AE73311	HOSE KIT	1		(SUB FOR AE52172) COMPRESSOR TO CONDENSOR
3	AE73287	REFRIGERANT HOSE	1		(SUB FOR AE52171, THIS APPLICATION) CAB TO COMPRESSOR
4	AE73289	REFRIGERANT HOSE	1		(SUB FOR AE52174) RECEIVER/DRYER TO CAB
5	RE214439	RECEIVER-DRYER	1		(SUB FOR RE49169)
6	99M7102	CLAMP	1		
7	T71897	SLEEVE	1		
8	19M8039	SCREW	1		M8 X 80
9	14M7298	FLANGE NUT	1		M8
10	R183409	O-RING	4		(SUB FOR R10093, THIS APPLICATION)
11	R183410	O-RING	2		(SUB FOR R113050, THIS APPLICATION)
12	R183411	O-RING	2		(SUB FOR R113050, THIS APPLICATION)

PC9108 80-28 4895 Self-Propelled Windrower / AIR CONDITIONING COMPRESSOR (FOR R134A REFRIGERANT) [02G07] PC9108 - OTTUMWA

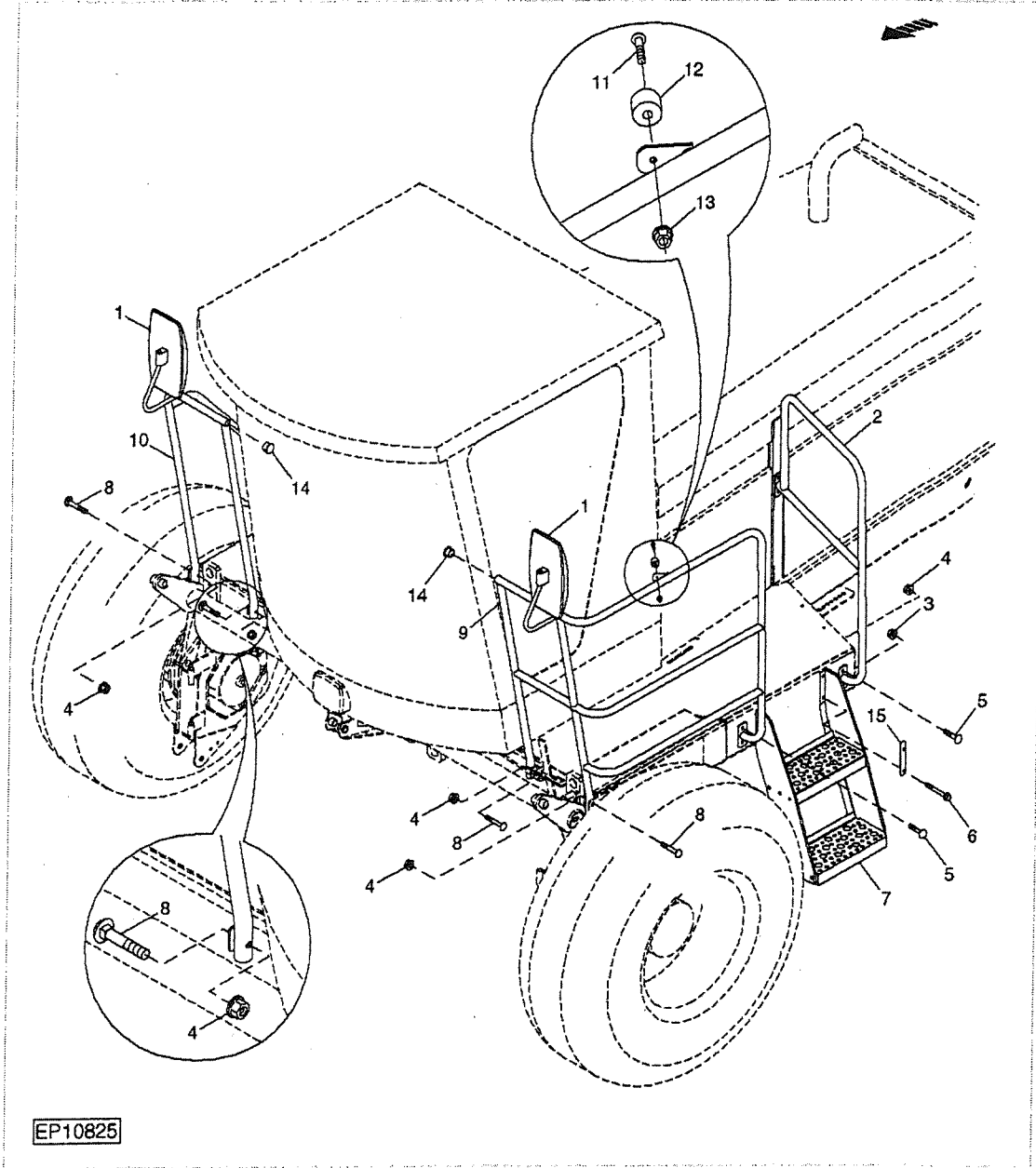


EP13477

Part List PC9108 80-28 4895 Self-Propelled Windrower / AIR CONDITIONING COMPRESSOR (FOR R134A REFRIGERANT) (02G07) PC9108 - OTTUMWA

KEY	PART NO.	PART NAME	QTY	SERIAL NO.	REMARKS
1	19M7913	SCREW	4		M8 X 90
2	RE69715	MANIFOLD	1	_____ -330015	(WITH SEAL)
3	TY24304	COMPRESSOR	1	_____ -330015	
4	34M7189	SPRING PIN	2		11 X 8 MM
5	E63525	NUT	3		
6	AH169875	COMPRESSOR	1	330016-_____	
..	R115742	SEAL	1		MANIFOLD
..	TY15949	REFRIGERANT	1		12 LBS (R134A)
..	TY15950	REFRIGERANT	1		15 LBS (R134A)
..	TY15951	REFRIGERANT	1		30 LBS (R134A)

PC2432 90-30 4890 Self-Propelled Windrower / HANDRAILS, LADDER AND MIRRORS [02E17] PC2432 - OTTUMWA



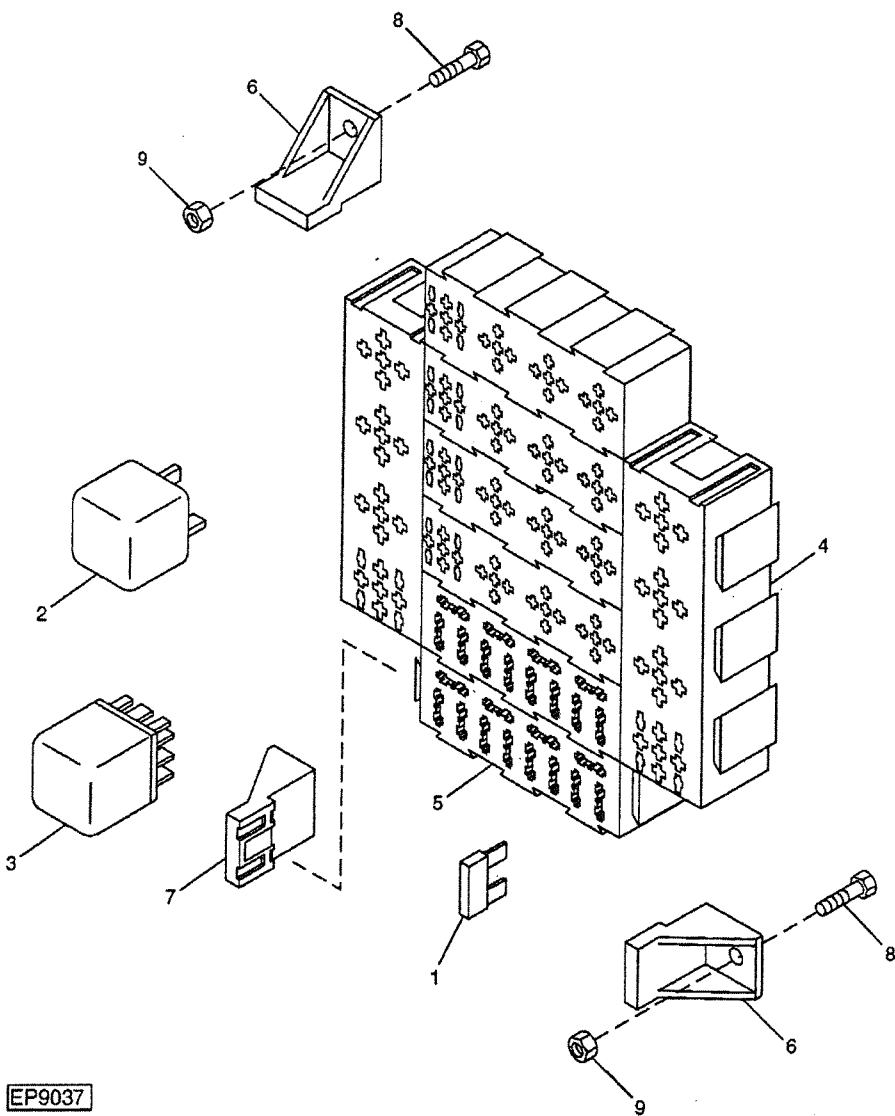
Part List

PC2432 90-30 4890 Self-Propelled Windrower / HANDRAILS, LADDER AND MIRRORS [02E17]

PC2432 - OTTUMWA

KEY	PART NO.	PART NAME	QTY	SERIAL NO.	REMARKS
1	AH142404	REAR VIEW MIRROR	2		
2	AE52718	HANDRAIL	1		
3	E63526	NUT	4		
4	E63527	NUT	AR		
5	O3M7197	BOLT	6		M12 X 25
6	19M7786	SCREW	4		M10 X 30
7	AE56659	LADDER	1		(SUB FOR AE51879)
8	O3M7202	BOLT	AR		M12 X 50
9	AE59180	HANDRAIL	1		(SUB FOR AE53208)
10	AE59181	SUPPORT	1		(SUB FOR AE53219)
11	21M7206	SCREW	1		M6 X 20
12	T184135	BUMPER	1		(SUB FOR T101090)
13	E63524	NUT	1		
14	H106000	PLUG	2		
15	E96555	STRAP	2	140001-_____	(USE WITH AE56659)

PC2432 40-6 4890 Self-Propelled Windrower / FUSE PANEL AND RELAYS [01E16] PC2432 - OTTUMWA



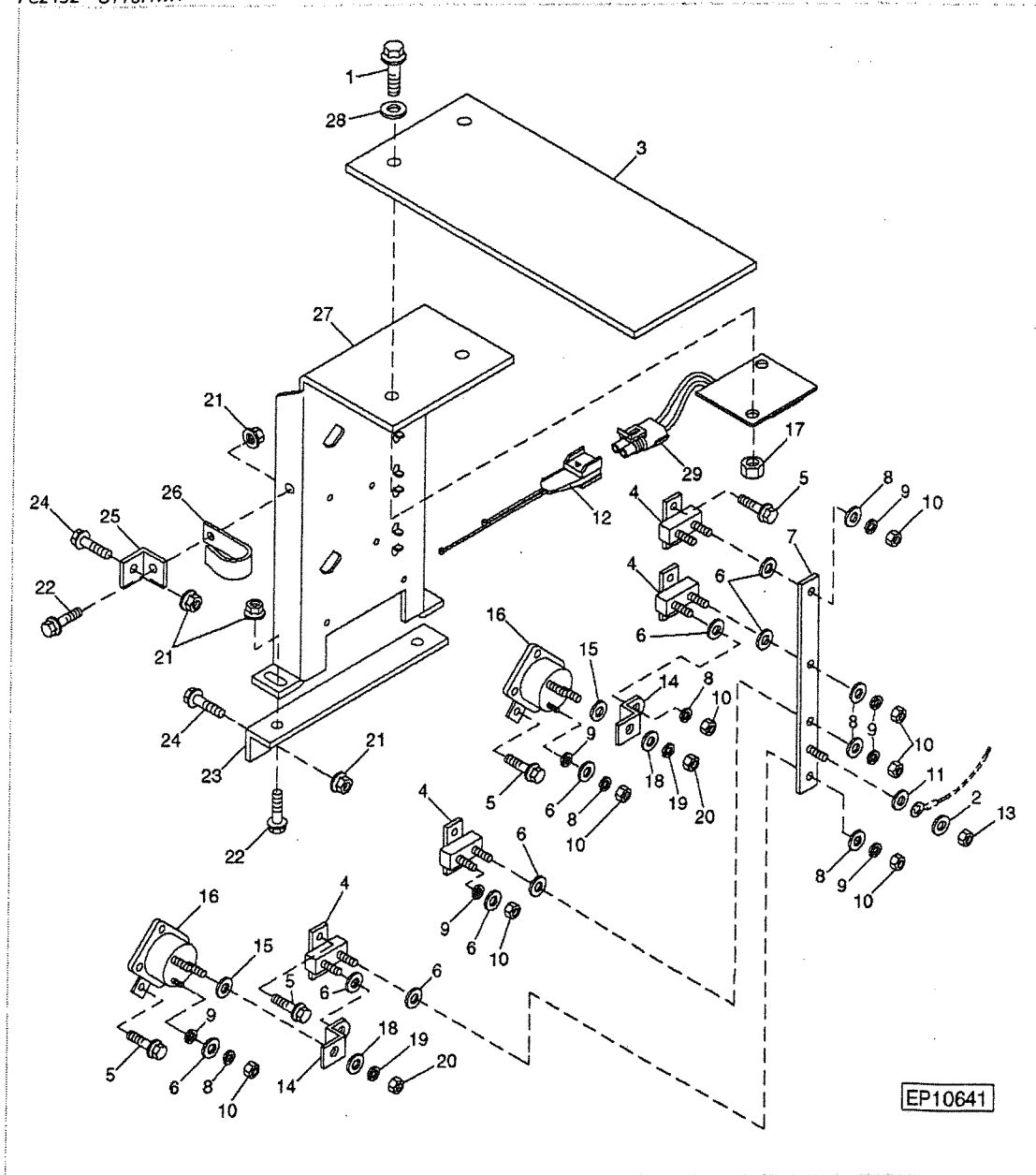
EP9037

Part List
OTTUMWA

PC2432 40-6 4890 Self-Propelled Windrower / FUSE PANEL AND RELAYS [01E16] PC2432 -

KEY	PART NO.	PART NAME	QTY	SERIAL NO.	REMARKS
1	57M7121	FUSE	7		
1	57M7120	FUSE	6		
1	57M7146	FUSE	4		
2	RE68327	RELAY	20		(SUB FOR RE48876) (SUB AE74018, THIS APPLICATION)
2	AE74018	RELAY	20		
3	RE262484	DIODE	1		(SUB FOR RE39967 OR RE153894)
4	RE49724	ELEC. CONNECTOR ACCESSORY	6		
4	57M7511	ELEC. CONNECTOR TERMINAL	1		18 - 20 GAUGE
4	57M7429	ELEC. CONNECTOR TERMINAL	1		14 - 16 GAUGE
4	57M7512	ELEC. CONNECTOR TERMINAL	1		10 - 12 GAUGE
4	57M7521	ELEC. CONNECTOR TERMINAL	1		DOUBLE 12 GAUGE
5	RE43737	ELEC. CONNECTOR ACCESSORY	2		
5	57M7593	ELEC. CONNECTOR TERMINAL	1		14 - 16 GAUGE
5	57M7609	ELEC. CONNECTOR TERMINAL	1		10 - 12 GAUGE OR DOUBLE 14 GAUGE
6	RE49726	SUPPORT	2		
7	E92565	SUPPORT	1		
8	19M7775	SCREW	2		M6 X 16
9	14M7303	FLANGE NUT	2		M6

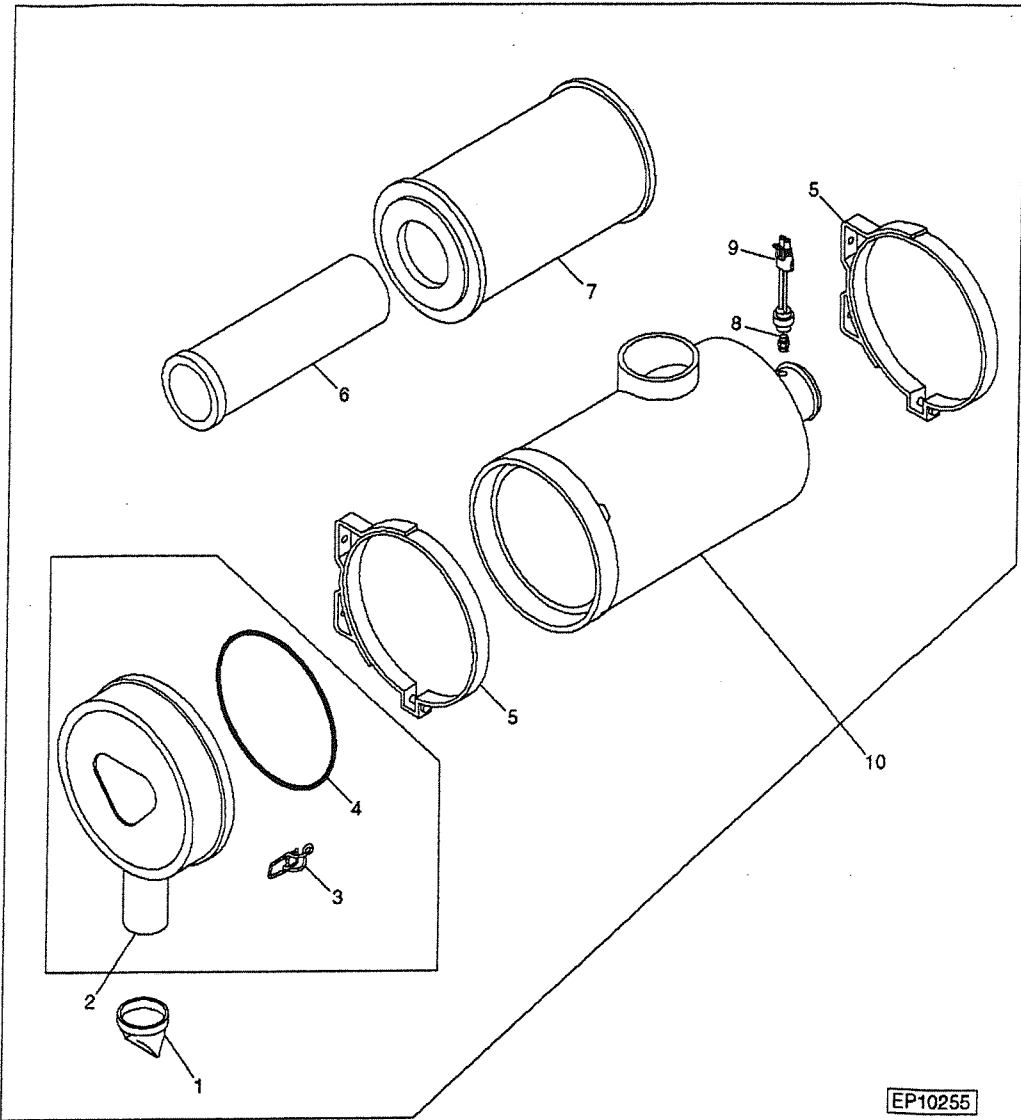
PC2432 40-34 4890 Self-Propelled Windrower / CIRCUIT BREAKERS - ENGINE COMPARTMENT [01F17]
PC2432 - OTTUMWA



Part List *PC2432 40-34 4890 Self-Propelled Windrower / CIRCUIT BREAKERS - ENGINE*
 COMPARTMENT [01F17] PC2432 - OTTUMWA

KEY	PART NO.	PART NAME	QTY	SERIAL NO.	REMARKS
1	19M7775	SCREW	2		M6 X 16
2	24M7054	WASHER	1		6.400 X 12 X 1.600 MM
3	H150923	FLAP	1		
4	AH112189	CIRCUIT BREAKER	4		
5	37H147	SCREW	4		
6	12M7060	WASHER	10		5.300 MM
7	AH145031	STRAP	1		
8	24M7087	WASHER	10		5.500 X 10 X 1 MM
9	12H246	LOCK WASHER	10		0.190"
10	14H631	NUT	10		0.190"
11	12M7081	LOCK WASHER	1		6.400 MM
12	AE56796	WIRING HARNESS	1	_____ -140064	
13	14M7303	FLANGE NUT	1		M6
14	H125347	STRAP	2		
15	12M7032	LOCK WASHER	4		8.400 MM
16	AR73144	RELAY	2	_____ -140064	(USE WITH RE43542 AND AE56796)
16	AH160278	RELAY	2	140065-_____	DO NOT MIX WITH AR73144
17	E63524	NUT	2		
18	24M7055	WASHER	4		8.400 X 16 X 1.600 MM
19	12M7065	LOCK WASHER	4		8 MM
20	14H785	NUT	4		5/16"
21	14M7298	FLANGE NUT	6		M8
22	03M7183	BOLT	3		M8 X 16
23	E87424	ANGLE	1		
24	03M7185	BOLT	3		M8 X 25
25	E87475	ANGLE	1		
26	AH90990	CLIP	1		
27	H164348	PANEL	1		(SUB FOR H150922)
28	24M7139	WASHER	2		6.400 X 18 X 1.600 MM
29	RE43542	DIODE	1	_____ -140064	

PC9259 30-12 4995 Self-Propelled Windrower / AIR CLEANER [01D18] PC9259 - OTTUMWA



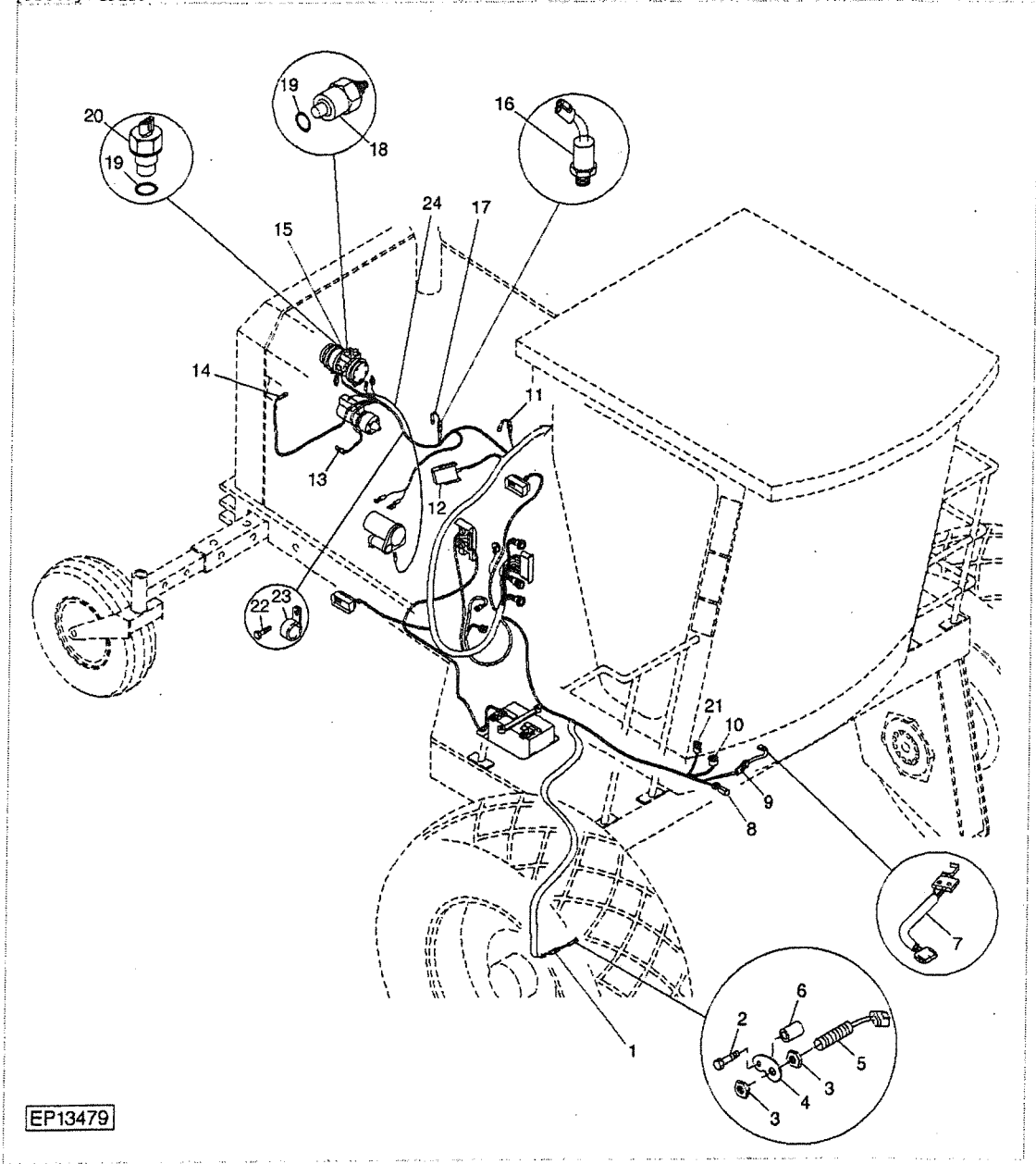
Part List

PC9259 30-12 4995 Self-Propelled Windrower / AIR CLEANER [01D18] PC9259 - OTTUMWA

KEY	PART NO.	PART NAME	QTY	SERIAL NO.	REMARKS
1	R48568	VALVE	1		
2	AT178515	COVER	1		
3	AT180587	LATCH	3		
4	T161928	O-RING	1		
5	AT208137	BAND	2		
6	AT178517	FILTER ELEMENT	1		SECONDARY
7	AT178516	FILTER ELEMENT	1		PRIMARY
8	AR44361	FITTING	1		
9	AT178542	AIR RESTRICTION SENSOR	1		
10	AT174480	AIR CLEANER	1		

PC9259 40-54 4995 Self-Propelled Windrower / WIRING HARNESS (RIGHT SIDE) (MAIN TRACTION)

[01G09] PC9259 - OTTUMWA



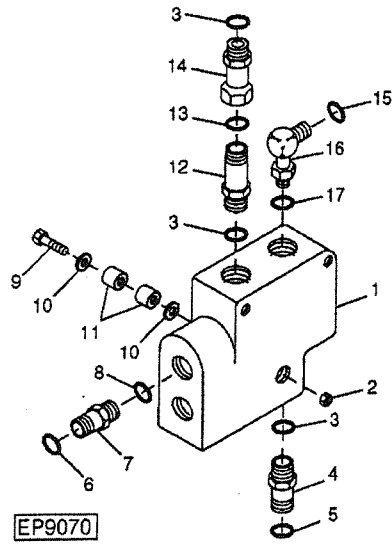
Part List

PC9259 40-54 4995 Self-Propelled Windrower / WIRING HARNESS (RIGHT SIDE) (MAIN TRACTION) [01G09] PC9259 - OTTUMWA

KEY	PART NO.	PART NAME	QTY	SERIAL NO.	REMARKS
1	R78053	ELECTRICAL CONNECTOR ASSY	1		GROUND SPEED PICK UP
1	R78058	ELEC. CONNECTOR TERMINAL	1		
1	R78059	ELEC. CONNECTOR SEAL	1		
2	19H3031	CAP SCREW	1		3/8" X 2-1/2"
3	R27448	NUT	2		(SUB FOR H132647)
4	E85013	STRAP	1		
5	AH116104	SENSOR	1		GROUND SPEED
6	E93433	SPACER	1		
7	AH163708	ROTARY SWITCH	1		
8	57M7538	ELEC. CONNECTOR HOUSING	1		PLATFORM
8	R104919	ELEC. CONNECTOR TERMINAL	1		
8	57M7258	ELEC. CONNECTOR SEAL	1		
8	R78062	ELEC. CONNECTOR SEAL	1		12 GAUGE
8	R78059	ELEC. CONNECTOR SEAL	1		
8	R78063	ELEC. CONNECTOR SEAL	1		
9	57M7819	ELEC. CONNECTOR TERMINAL	1		NEUTRAL START SWITCH
9	R78065	ELEC. CONNECTOR TERMINAL	1		
9	R77464	ELEC. CONNECTOR TERMINAL	1		
10	57M7291	ELECTRICAL CONNECTOR ASSY	1		STEERING COLUMN HARNESS
10	57M7263	ELEC. CONNECTOR HOUSING	1		CLAMP
10	R104919	ELEC. CONNECTOR TERMINAL	1		
10	57M7258	ELEC. CONNECTOR SEAL	1		
11	AE44392	ELECTRICAL CONNECTOR ASSY	1		THROTTLE MOTOR
11	AE44389	ELEC. CONNECTOR ACCESSORY	1		CLAMP
11	R77465	ELEC. CONNECTOR TERMINAL	1		
12	R78053	ELECTRICAL CONNECTOR ASSY	1		AIR FILTER RESTRICT
12	RE12363	ELECTRICAL CONNECTOR ASSY	1		
12	R78057	ELEC. CONNECTOR TERMINAL	1		
12	R78058	ELEC. CONNECTOR TERMINAL	1		
12	R78059	ELEC. CONNECTOR SEAL	1		
13	R78053	ELECTRICAL CONNECTOR ASSY	1		ENGINE OIL PRESSURE
13	R78065	ELEC. CONNECTOR TERMINAL	1		
13	R78058	ELEC. CONNECTOR TERMINAL	1		
13	R78059	ELEC. CONNECTOR SEAL	1		
14	RE12363	ELECTRICAL CONNECTOR ASSY	1		AIR CONDITIONER HIGH PRESSURE SWITCH
14	R78063	ELEC. CONNECTOR SEAL	1		
14	57M7277	ELEC. CONNECTOR TERMINAL	1		
14	R78060	ELEC. CONNECTOR TERMINAL	1		
15	57M7278	ELECTRICAL CONNECTOR	1		ENGINE TACH

		ASSY			
15	57M7258	ELEC. CONNECTOR SEAL	1		
15	R104919	ELEC. CONNECTOR TERMINAL	1		
16	AH139059	TEMPERATURE SWITCH	1		ENGINE TEMP LIGHT
17	57M7309	ELEC. CONNECTOR HOUSING	1		ENGINE TEMP LIGHT
17	57M7306	ELEC.CONNECT LOCKING DEVICE	1		
17	R104919	ELEC. CONNECTOR TERMINAL	1		
17	57M7258	ELEC. CONNECTOR SEAL	1		
17	57M7297	ELEC. CONNECTOR TERMINAL	1		
17	R78059	ELEC. CONNECTOR SEAL	1		
18	AH151124	SENSOR	1		ENGINE TEMP GAUGE
19	51M7041	O-RING	1		
20	RE71121	SENSOR	1		ENGINE RPM
21	57M7810	CONNECTOR	1		STEERING COLUMN HARNESS
21	57M7808	ELEC. CONNECTOR TERMINAL	1		
21	R78063	ELEC. CONNECTOR SEAL	1		
22	19M7784	SCREW	1		M10 X 20
23	AH89557	CLIP	1	_____ -330539	
23	T38377	CLAMP	1	330540-_____	
24	AE74731	WIRING HARNESS	1	330540-_____	GROUND (COMPRESSOR TO STARTER BASE)

PC2432 70-36 4890 Self-Propelled Windrower / VLC PRIORITY VALVE [01J01] PC2432 - OTTUMWA

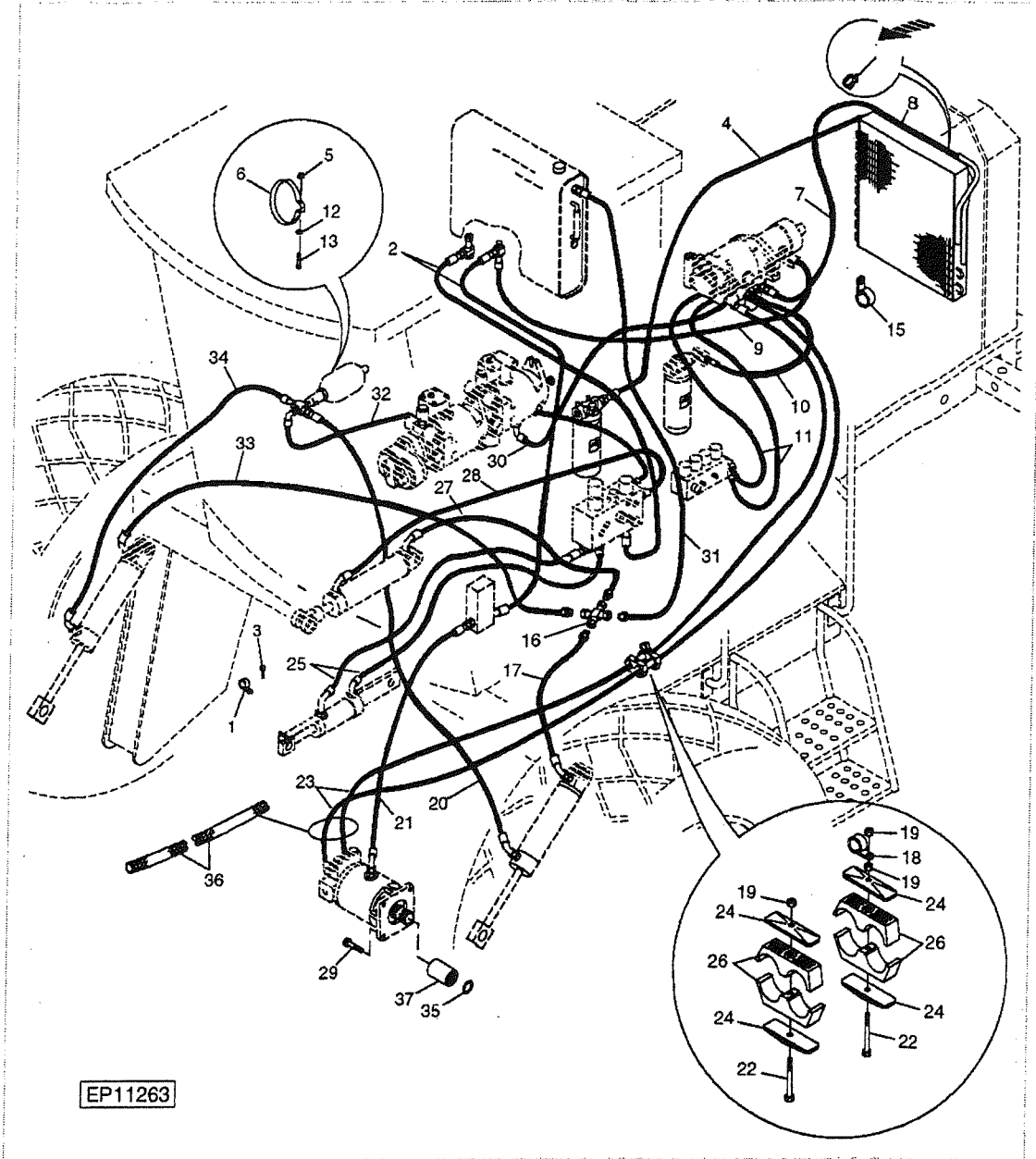


Part List
OTTUMWA

PC2432 70-36 4890 Self-Propelled Windrower / VLC PRIORITY VALVE [01J01] PC2432 -

KEY	PART NO.	PART NAME	QTY	SERIAL NO.	REMARKS
1	AE51351	VALVE	1		
2	E63525	NUT	1		
3	R26906	O-RING	3		
4	38H1193	ADAPTER FITTING	1	-150000	
4	T38666	FITTING	1	150001-	
5	T77858	O-RING	1	-150000	
6	T77613	O-RING	1	-150000	
7	38H1309	ADAPTER FITTING	1	-150000	
7	AA34748	ELBOW FITTING	1	150001-	
8	R28782	O-RING	1		
9	03M7327	BOLT	1	-150000	M8 X 110
10	24M7207	WASHER	2		8.400 X 24 X 2 MM
11	FH304203	SPACER	2		
12	38H1214	ADAPTER FITTING	1		
13	T77932	O-RING	1		
14	38H1069	FITTING	1		
15	T77857	O-RING	1	-150000	
16	38H1005	ELBOW FITTING	1	-150000	
16	AT32332	ELBOW FITTING	1	150001-	
17	R26375	O-RING	1		

PC2432 70-6 4890 Self-Propelled Windrower / HYDRAULICS - S.N. (- 150000) [01H22] PC2432 - OTTUMWA



Part List

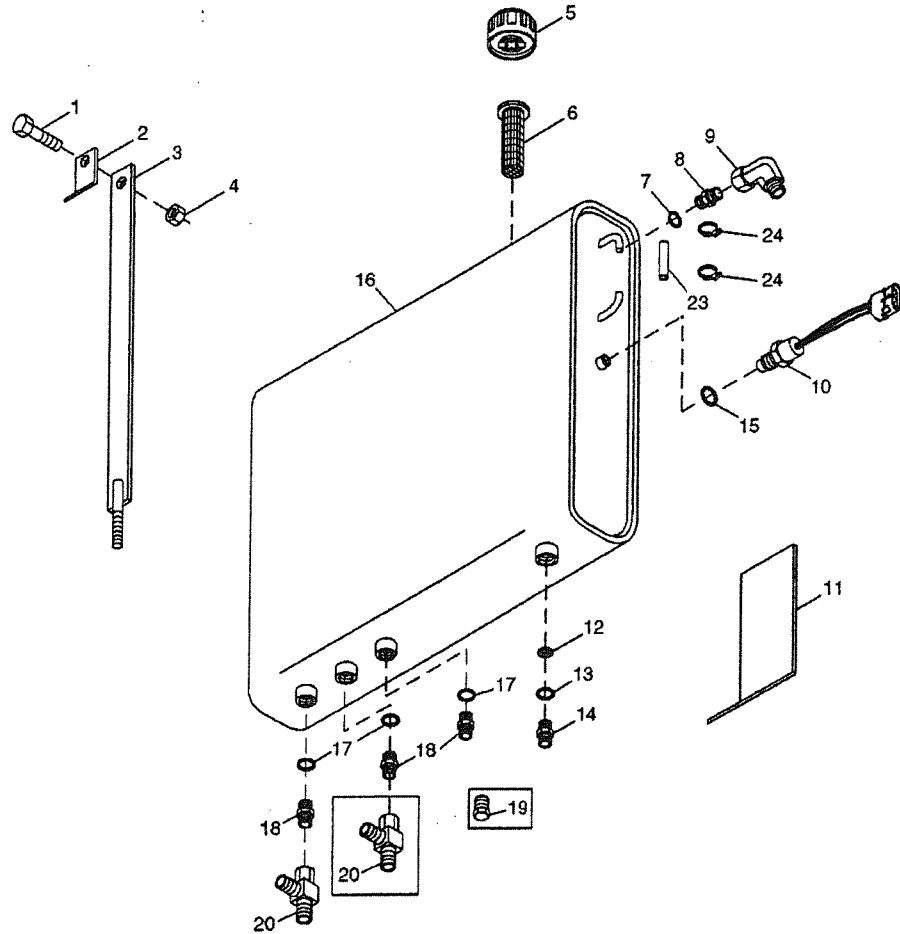
PC2432 70-6 4890 Self-Propelled Windrower / HYDRAULICS - S.N. (- 150000) [01H22]

PC2432 - OTTUMWA

KEY	PART NO.	PART NAME	QTY	SERIAL NO.	REMARKS
1	R50454	CLAMP	1		
2	AE52148	HYDRAULIC HOSE	2		
3	37M7086	SCREW	1		M10 X 20
4	AE52150	HYDRAULIC HOSE	1		
5	T16464	LOCK NUT	2		
6	R77178	CLAMP	2	114000-140064	
6	T64273	CLAMP	2	140065-	
7	AE52151	HYDRAULIC HOSE	1		
8	AE51371	HEAT EXCHANGER	1		OIL-COOLER/AIR-CONDITIONER CONDENSER
9	AE52147	HYDRAULIC HOSE	1		
10	AE52160	HYDRAULIC HOSE	1		
11	AE52156	HYDRAULIC HOSE	2		
12	24M7055	WASHER	4		8.400 X 16 X 1.600 MM
13	19H2866	CAP SCREW	2		5/16" X 4-1/4"
14	TY22467	CLAMP	2		
15	AH130222	CLAMP	1		
16	38H1465	FITTING	1		
16	T77613	O-RING	4		
17	AE52142	HYDRAULIC HOSE	1		
18	T26955	CLAMP	1		
19	E64256	LOCK NUT	3		
20	AE52128	HYDRAULIC HOSE	1		
21	AE52136	HYDRAULIC HOSE	1		
22	19M7913	SCREW	2		M8 X 90
23	AE74111	HYDRAULIC HOSE - FABRICATE	2		(SUB FOR AE52125 OR AE73737)
24	H114901	PLATE	4		
25	AE52129	HYDRAULIC HOSE	2		
26	H150222	HOSE CLAMP	4		
27	AE52141	HYDRAULIC HOSE	1		
28	AE52134	HYDRAULIC HOSE	1		
29	19M7791	BOLT	4		M12 X 40
30	AE52152	HYDRAULIC HOSE	1		
31	AE52145	HYDRAULIC HOSE	1		
32	AE52132	HYDRAULIC HOSE	1		
33	AE52144	HYDRAULIC HOSE	1		
34	AE52143	HYDRAULIC HOSE	1		
35	M41029	SNAP RING	2		
36	E87081	COVER	1		GOES OVER KEYS 21 AND 23 ON END BY MOTOR
37	H129525	SPLINED COUPLING	1		

PC2432 70-44 4890 Self-Propelled Windrower / HYDRAULIC RESERVOIR - S.N. (150001 -) [01J09] PC2432

- OTTUMWA



EP12304

Part List

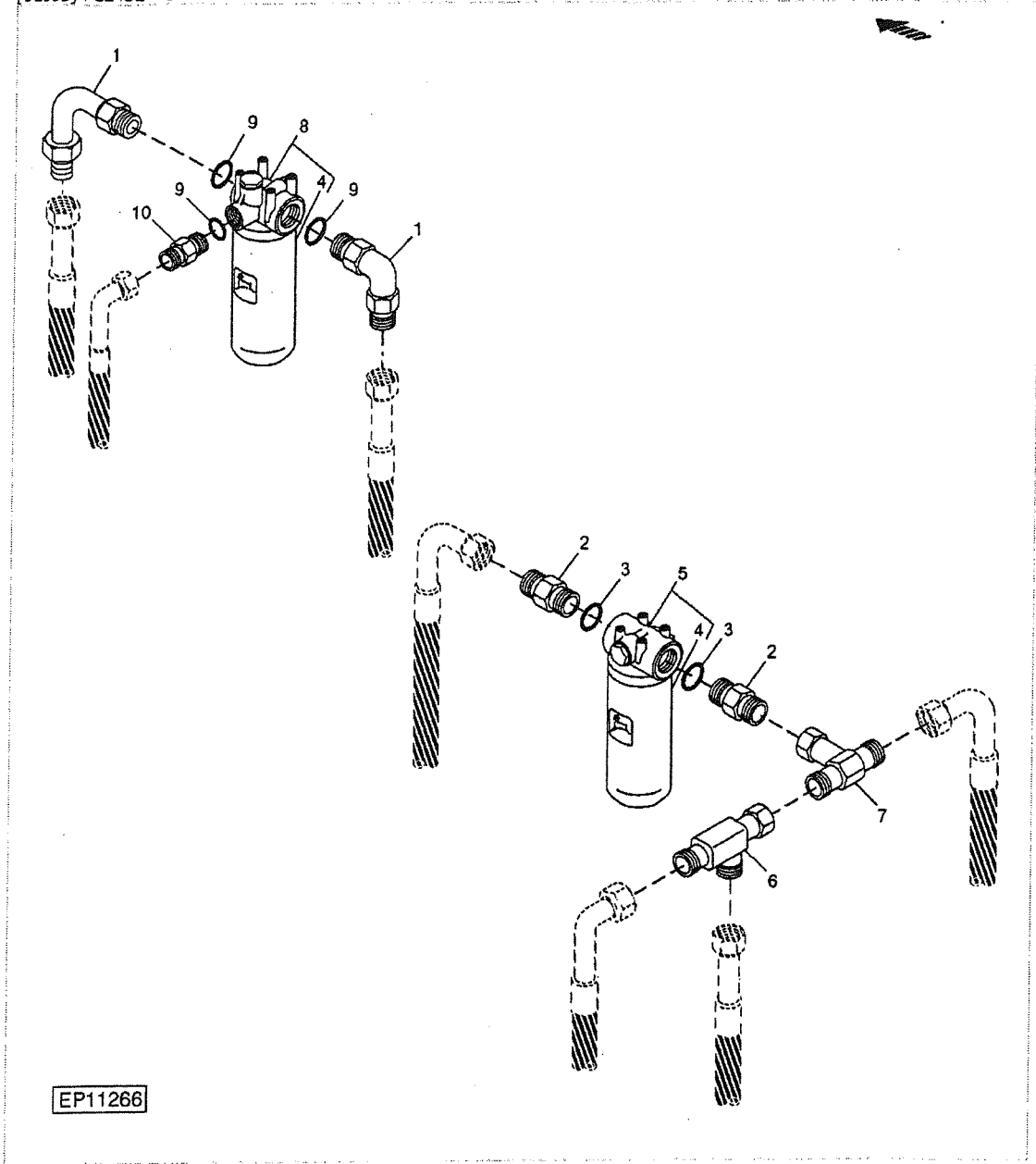
PC2432 70-44 4890 Self-Propelled Windrower / HYDRAULIC RESERVOIR - S.N. (150001 -)

[01J09] PC2432 - OTTUMWA

KEY	PART NO.	PART NAME	QTY	SERIAL NO.	REMARKS
1	19M7867	SCREW	2		M8 X 25
2	E38375	CLIP	2		
3	AE53168	BAND	2		
4	E63525	NUT	2		
5	AZ49144	FILLER CAP	1		(A)
6	AH135064	STRAINER	1		(A)
7	R26448	O-RING	1		
8	R27212	FITTING	1		
9	AE24616	ELBOW FITTING	1		
10	AH116105	SWITCH	1		
11	E90424	ISOLATOR	2		
12	E91833	STRAINER	1		
13	U13639	O-RING	1		
14	R37187	ADAPTER FITTING	1		
15	R26375	O-RING	1		
16	AE58180	HYDRAULIC RESERVOIR	1		(SUB AFH204001) (ALSO ORDER R39741, R36636, (3) R29936, U13639 AND (2) 38H1194) INCLUDES PARTS MARKED (A)
17	U12547	O-RING	3		(A)
18	R27267	FITTING	2	181000	
18	R27267	FITTING	3	181001-	
19	R27175	DRAIN PLUG	1	181000	(A)
20	AT43903	TEE FITTING	2	181000	
20	X12R6X-S	TEE FITTING	1	181001-	(SUB FOR AT43903)
21	R26375	O-RING	1		
22	R27175	DRAIN PLUG	1		
23	HOSE	1		(A) (CUT FROM PMK3150-06) TO 127MM (5")
24	TY22462	CLAMP	2		(A)

PC2432 70-12 4890 Self-Propelled Windrower / HYDRAULIC FILTERS AND FITTINGS - S.N. (150001 -)

[01103] PC2432 - OTTUMWA



EP11266

Part List

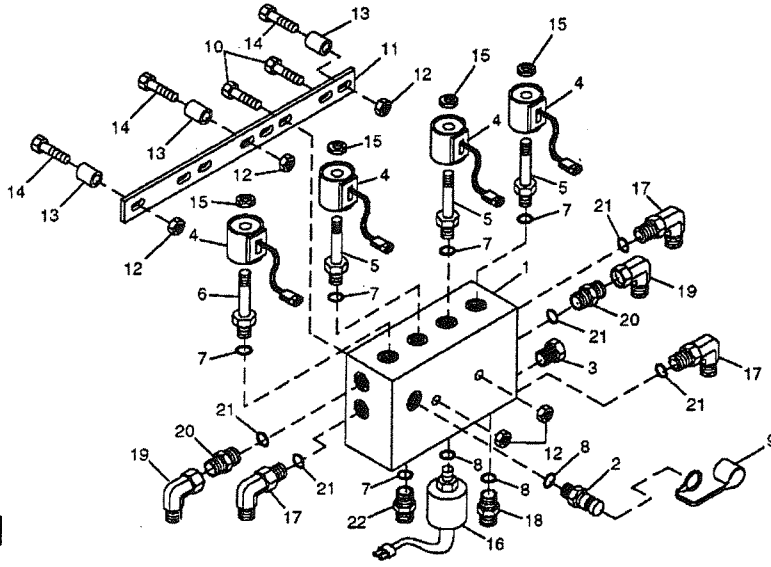
PC2432 70-12 4890 Self-Propelled Windrower / HYDRAULIC FILTERS AND FITTINGS - S.N.

(150001 -) [01103] PC2432 - OTTUMWA

KEY	PART NO.	PART NAME	QTY	SERIAL NO.	REMARKS
1	AT32331	ELBOW FITTING	2		
2	T48176	ADAPTER FITTING	2		
3	R29936	O-RING	2		
4	AH128449	HYDRAULIC FILTER	2		
5	AE51891	FILTER HEAD	1		W/O BYPASS VALVE
6	AN33434	TEE FITTING	1		
7	AT54268	TEE FITTING	1		
8	AE51890	FILTER HEAD	1		WITH BYPASS VALVE
8	AE55627	KIT	1		BYPASS VALVE KIT
8	AH128450	PUSH SWITCH	1		ELEC. SWITCH KIT
9	U12547	O-RING	3		
10	R27267	FITTING	1		

PC2432 70-30 4890 Self-Propelled Windrower / LOW PRESSURE VALVE AND FITTINGS - S.N. (150001 -)

[01121] PC2432 - OTTUMWA



EP11101

Part List PC2432 70-30 4890 Self-Propelled Windrower / LOW PRESSURE VALVE AND FITTINGS - S.N.
 (150001 -) [01121] PC2432 - OTTUMWA

KEY	PART NO.	PART NAME	QTY	SERIAL NO.	REMARKS
1	E92033	HOUSING	1		
2	AH125760	HYD. QUICK-CONNECT COUPLER	1		
3	AE55483	PLUG	1		
4	E92035	SOLENOID VALVE COIL	4		
5	AE55484	SOLENOID VALVE	3		
5	AE56668	O-RING KIT	1		
6	AT195922	HYD ACTUATED CONTROL VALVE	1		(SUB FOR AE55485)
6	F433465	SEAL KIT	1		(SUB FOR AE56669)
7	R26375	O-RING	5		
8	R26448	O-RING	2		
9	R77175	COVER	1		
10	03M7233	BOLT	2		M10 X 70
11	E86766	STRAP	1		
12	E63526	NUT	5		
13	FH304203	SPACER	3		
14	03M7195	BOLT	3		M10 X 45
15	R109691	NUT	4		
16	AH224451	SWITCH	1		(SUB FOR AH128929)
17	AH63565	ELBOW FITTING	3		
18	R27212	FITTING	1		
19	AH89069	ELBOW FITTING	2		
20	H63599	UNION FITTING	2		
21	R28782	O-RING	5		
22	T51241	ADAPTER FITTING	5		
..	AE56652	O-RING KIT	1		



To find a dealer in your area,

Call: 503.625.2560

Fax: 503.625.7269

Visit our website: www.alliedsystems.com

Allied Systems
COMPANY

PB00000219 4/2011
Printed in USA