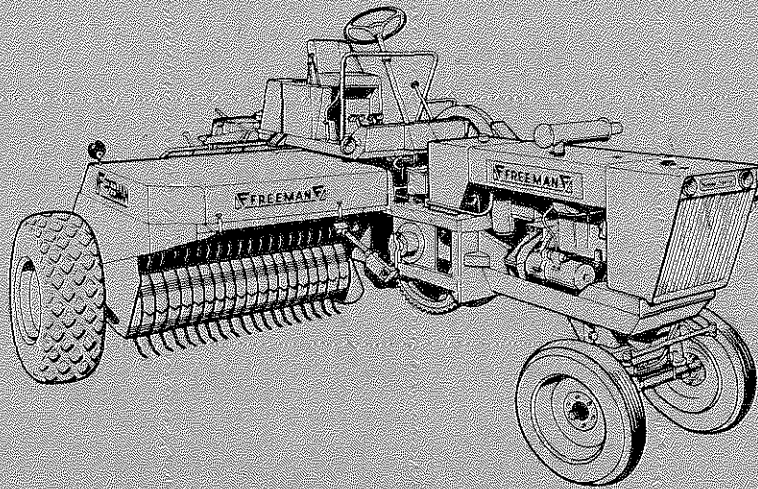


# Freeman Automatic Self-Propelled Baler 1973 & 1974 Parts & 1975 SUPPLEMENT List

Self Propelled  
Hydrostatic Drive

Model 200T and 200W  
Model 330T and 330W



---

*manufactured and distributed by*

**J. A. FREEMAN & SON, INC.**

---

**PB00000139**

**PORTLAND, OREGON**

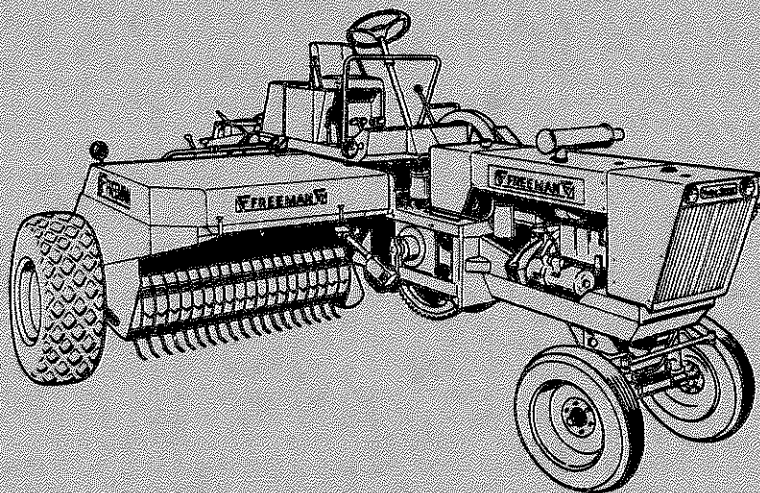
Printed in U. S. A. 10-73

# 1973-1974 PARTS LIST

for

Self Propelled  
Hydrostatic Drive

Model 200T and 200W  
Model 330T and 330W



## POLICY

1. It is the policy of J. A. Freeman & Son, Inc. to constantly improve its products whenever it is practical to do so.
2. J. A. Freeman & Son, Inc. reserve the right to redesign or change its equipment or component parts thereof without incurring any obligation to install or furnish such changes on equipment previously delivered.
3. Unauthorized changes or additions to equipment manufactured by J. A. Freeman & Son, Inc. relieves the company of further responsibility for warranted operation and breakage replacement.

## INSTRUCTIONS FOR ORDERING PARTS

1. Part number and description of part.
  - (a) Parts should NOT be ordered from illustration only.
  - (b) Parts should NOT be ordered from numbers on castings.
2. Order by baler serial number and model.
3. Much delay and confusion can be avoided if parts numbers are arranged in sequence on all orders.
4. State how to ship: whether by truck, stage, mail, rail, express or freight, air express or air freight.
5. Claims for shortage or error in handling of an order for parts must be made upon receipt of goods.
6. Address all orders for parts as follows:

J. A. Freeman & Son, Inc.  
Parts Department,  
2034 N. W. 27th Avenue,  
Portland, Oregon 97210

Place serial number of machine here for your convenience:

Baler Serial No. \_\_\_\_\_

Motor Serial No. \_\_\_\_\_

Left and right of machine are understood to mean from a position facing in the direction of baler travel.

Permission must be secured before any parts are returned for credit. When parts are returned, the freight must be prepaid or arrangements made so that they can be brought in by our trucks.

### "NOTE"

Parts are identified by reference numbers. See parts list for correct part numbers. DO NOT USE REFERENCE NUMBERS AS PART NUMBERS.

## TABLE OF CONTENTS

Front end engine base and cowl . . . . .	1
Operator platform . . . . .	2
Clutch control and belt drive . . . . .	3
Gear shift control and operators seat . . . . .	4
Steering assembly . . . . .	5, 6
Rear axle and final drive . . . . .	7, 8
Hydrostatic drive system . . . . .	9,10
Pickup lift . . . . .	11
Electrical system . . . . .	12
Wire box and wire guide . . . . .	13
Twine box and twine guides . . . . .	14
Drive gear box . . . . .	15
Pickup shield and bull gear luber . . . . .	16
Throttle control, tension control and fuel line . . . . .	17
Air cleaner and exhaust . . . . .	18
Radiator and shroud . . . . .	19
Tow bar . . . . .	20
Excel cab . . . . .	21

# INDEX

Part No.	Page No.	Part No.	Page No.	Part No.	Page No.	Part No.	Page No.
F 83	.... 6	F 5040	.... 6	F 6081	.... 4	F 6278	.... 2
F 96	.... 11	F 5048	.... 3	F 6104	.... 16	F 6279	.... 2
F 214	.... 6	F 5049	...3,11	F 6105	.... 16	F 6280	.... 2
F 246	.... 4	F 5055	....3,4	F 6111	.... 16	F 6281	.... 2
F 440	.... 4	F 5069	.... 17	F 6135	.... 21	F 6282	.... 2
F 462	.... 6	F 5075	.... 8	F 6136	.... 21	F 6283	.... 2
F 524	.... 14	F 5076	.... 8	F 6137	.... 21	F 6290	.... 2
F 525	.... 14	F 5159	.... 13	F 6138	.... 21	F 6291	.... 2
F 853	.... 16	F 5232	.... 17	F 6139	.... 21	F 6292	.... 5
F 856	..13,14	F 5234	.... 12	F 6140	.... 21	F 6293	.... 5
F 857	..13,14	F 5236	.... 12	F 6141	.... 21	F 6294	.... 5
F 862	.... 12	F 5237	.... 12	F 6142	.... 21	F 6306	.... 18
F 884	.... 6	F 5275	.... 8	F 6143	.... 21	F 6308	.... 18
F 934	.... 6	F 5276	.... 8	F 6144	.... 21	F 6310	.... 18
F 946	.... 13	F 5445	.... 15	F 6145	.... 21	F 6312	.... 18
F 1002	.... 4	F 5446	.... 15	F 6146	.... 21	F 6314	.... 13
F 1003	.... 17	F 5501	.... 4	F 6148	.... 21	F 6317	..13,14
F 1005	.... 17	F 5502	.... 4	F 6150	.... 21	F 6318	..13,14
F 1007	.... 17	F 5505	.... 4	F 6153	.... 21	F 6319	..13,14
F 1083	.... 15	F 5545	.... 17	F 6155	.... 21	F 6320	.... 13
F 1084	.... 15	F 5546	.... 2	F 6170	.... 8	F 6321	.... 13
F 1087	.... 15	F 5551	..2,17	F 6175	.... 2	F 6322	.... 13
F 1131	.... 17	F 5554	..11,17	F 6182	.... 2	F 6323	.... 5
F 1245	.... 15	F 5559	.... 17	F 6183	.... 2	F 6324	.... 5
F 1246	.... 15	F 5614	.... 6	F 6206	.... 3	F 6328	.... 12
F 1497	.... 12	F 5650	.... 4	F 6208	.... 3	F 6332	.... 3
F 1624	.... 6	F 5703	.... 4	F 6209	.... 3	F 6339	.... 15
F 1625	.... 6	F 5705	.... 4	F 6212	.... 3	F 6340	.... 15
F 1626	.... 6	F 5769	.... 6	F 6214	.... 3	F 6341	...3,10
F 1627	.... 6	F 5842	.... 12	F 6215	.... 3	F 6354	.... 15
F 1628	.... 6	F 5854	.... 6	F 6216	.... 3	F 6355	.... 15
F 1653	.... 6	F 5866	.... 4	F 6217	.... 3	F 6360	.... 15
F 1654	.... 6	F 5867	.... 4	F 6218	.... 3	F 6371	.... 12
F 1689	.... 2	F 5918	.... 4	F 6220	.... 3	F 6394	.... 21
F 1706	.... 18	F 5920	.... 4	F 6221	.... 3	F 6395	.... 21
F 1720	.... 15	F 5921	.... 4	F 6222	..3,11	F 6396	.... 21
F 3102	.... 9	F 5941	.... 12	F 6223	.... 3	F 6397	.... 21
F 3104	.... 9	F 5947	.... 2	F 6224	.... 3	F 6398	.... 21
F 4014	.... 13	F 5948	.... 2	F 6226	.... 3	F 6402	.... 2
F 4015	.... 13	F 5949	.... 2	F 6227	.... 3	F 6407	.... 15
F 4067	.... 13	F 5954	.... 12	F 6228	.... 3	F 6408	.... 15
F 4068	.... 13	F 5971	.... 16	F 6230	.... 3	F 6409	.... 15
F 4137	.... 3	F 5979	.... 8	F 6235	.... 8,9	F 6410	..2,11
F 4163	.... 13	F 5984	.... 8	F 6236	.... 9	F 6412	.... 2
F 4190	.... 13	F 6018	.... 11	F 6240	.... 9	F 6413	.... 2
F 4191	.... 13	F 6032	.... 2	F 6241	.... 9	F 6415	.... 5
F 4203	.... 13	F 6034	.... 17	F 6244	.... 9	F 6420	.... 12
F 4204	.... 13	F 6035	.... 17	F 6245	.... 9	F 6421	.... 12
F 4205	.... 13	F 6036	.... 17	F 6251	.... 9	F 6422	.... 12
F 4206	.... 13	F 6041	.... 17	F 6258	.... 9	F 6424	.... 12
F 4210	...8,13	F 6042	.... 17	F 6259	.... 9	F 6426	.... 12
F 4222	.... 13	F 6048	.... 17	F 6261	.... 9	F 6429	.... 12
F 4225	.... 13	F 6049	.... 17	F 6263	.... 10	F 6431	.... 12
F 4228	.... 13	F 6050	.... 17	F 6269	.... 9	F 6432	.... 3
F 4229	.... 13	F 6054	.... 3	F 6270	.... 2	F 6442	.... 17
F 5023	.... 6	F 6067	.... 2	F 6271	.... 2	F 6443	.... 17
F 5031	.... 5	F 6069	.... 2	F 6272	.... 2	F 6450	.... 9
F 5032	.... 5	F 6079	.... 4	F 6273	.... 2	F 6451	.... 11
F 5039	.... 6	F 6080	.... 4	F 6274	.... 2		

## INDEX

Part No.	Page No.	Part No.	Page No.	Part No.	Page No.	Part No.	Page No.
F 6452	.... 18	F 6537	.... 15	F 6622	.... 1	F 6691	.... 6
F 6453	.... 9	F 6538	.... 8	F 6623	.... 1	F 6692	.... 6
F 6460	.... 12	F 6539	.... 6	F 6624	.... 3	F 6693	.... 6
F 6463	.... 5	F 6540	.... 18	F 6625	.... 12	F 6694	.... 6
F 6465	.... 3	F 6542	.... 16	F 6626	.... 12	F 6695	.... 6
F 6469	.... 1	F 6543	.... 16	F 6627	.... 12	F 6696	.... 1
F 6470	.... 1	F 6544	.... 16	F 6628	.... 10	F 6697	.... 1
F 6471	.... 1	F 6545	.... 16	F 6629	.... 10	F 6698	.... 1
F 6472	.... 1	F 6546	.... 16	F 6630	.... 5	F 6699	.... 1
F 6473	.... 1	F 6547	.... 3	F 6631	.... 6	F 6700	.... 1
F 6474	.... 1	F 6548	.... 12	F 6632	.... 6	F 6701	.... 1
F 6475	.... 1	F 6549	.... 12	F 6635	.... 11	F 6702	.... 1
F 6476	.... 1	F 6551	.... 12	F 6638	.... 11	F 6703	.... 1
F 6481	.... 2	F 6552	.... 12	F 6639	.... 12	F 6704	.... 1
F 6482	.... 2	F 6553	.... 12	F 6640	.... 17	F 6705	.... 1
F 6483	.... 3	F 6554	.... 12	F 6642	.... 17	F 6706	.... 11
F 6484	.... 3,15	F 6555	.... 12	F 6644	.... 17	F 6707	.... 11
F 6485	.... 3	F 6558	.... 12	F 6645	.... 17	F 6708	.... 11
F 6486	.... 3	F 6560	.... 18	F 6646	.... 17	F 6709	.... 11
F 6487	.... 3	F 6561	.... 1	F 6648	.... 17	F 6710	.... 11
F 6488	.... 5	F 6562	.... 2	F 6649	.... 17	F 6711	.... 11
F 6489	.... 5	F 6563	.... 3	F 6650	.... 17	F 6712	.... 11
F 6490	.... 5	F 6564	.... 3	F 6651	.... 17	F 6713	.... 2
F 6493	.... 6	F 6565	.... 3	F 6652	.... 17	F 6714	.... 2
F 6494	.... 6	F 6567	.... 15	F 6654	.... 2	F 6715	.... 3
F 6495	.... 6	F 6568	.... 15	F 6655	.... 18	F 6716	.... 3
F 6496	.... 6	F 6569	.... 15	F 6657	.... 10	F 6717	.... 3
F 6497	.... 6	F 6573	.... 1	F 6658	.... 10	F 6718	.... 8
F 6498	.... 6	F 6574	.... 3	F 6659	.... 9,11	F 6719	.... 11
F 6499	.... 6	F 6575	.... 5	F 6660	.... 9	F 6720	.... 11
F 6500	.... 6	F 6576	.... 5	F 6661	.... 9	F 6721	.... 8
F 6501	.... 6	F 6577	.... 12	F 6662	.... 9	F 6722	.... 8
F 6503	.... 6	F 6578	.... 12	F 6663	.... 9	F 6723	.... 11
F 6504	.... 6	F 6580	.... 10	F 6664	.... 9	F 6724	.... 11
F 6505	.... 6	F 6583	.... 17	F 6665	.... 9	F 6725	.... 11
F 6506	.... 6	F 6584	.... 17	F 6666	.... 9	F 6726	.... 11
F 6507	.... 6	F 6587	.... 6	F 6667	.... 9	F 6727	.... 11
F 6508	.... 6	F 6588	.... 20	F 6668	.... 9	F 6728	.... 11
F 6509	.... 6	F 6589	.... 13,14	F 6669	.... 9	F 6729	.... 11
F 6510	.... 6	F 6590	.... 20	F 6670	.... 9	F 6730	.... 11
F 6511	.... 6	F 6591	.... 20	F 6671	.... 9	F 6731	.... 13
F 6512	.... 20	F 6592	.... 20	F 6672	.... 9	F 6732	.... 1
F 6513	.... 20	F 6593	.... 20	F 6673	.... 9	F 6733	.... 1
F 6514	.... 20	F 6594	.... 20	F 6674	.... 9	F 6734	.... 8
F 6515	.... 20	F 6595	.... 20	F 6675	.... 9	F 6735	.... 8
F 6519	.... 6	F 6596	.... 20	F 6676	.... 9	F 6736	.... 8
F 6521	.... 18	F 6598	.... 20	F 6677	.... 9	F 6737	.... 8
F 6522	.... 18	F 6599	.... 6	F 6678	.... 9	F 6738	.... 8
F 6523	.... 18	F 6600	.... 19	F 6679	.... 9	F 6739	.... 8
F 6524	.... 18	F 6601	.... 19	F 6680	.... 9	F 6740	.... 8
F 6528	.... 15	F 6602	.... 19	F 6681	.... 9	F 6741	.... 8
F 6529	.... 15	F 6605	.... 1	F 6682	.... 9	F 6742	.... 8
F 6530	.... 15	F 6607	.... 2	F 6683	.... 10	F 6743	.... 8
F 6531	.... 15	F 6608	.... 2	F 6684	.... 10	F 6744	.... 8
F 6532	.... 15	F 6609	.... 2	F 6685	.... 10	F 6745	.... 8
F 6533	.... 15	F 6613	.... 9	F 6686	.... 10	F 6746	.... 8
F 6534	.... 15	F 6614	.... 9	F 6687	.... 10,11	F 6747	.... 8
F 6535	.... 15	F 6618	.... 9	F 6688	.... 6	F 6748	.... 8
F 6536	.... 15	F 6620	.... 9	F 6689	.... 6	F 6749	.... 8
				F 6690	.... 6		

## INDEX

Part No.	Page No.	Part No.	Page No.	Part No.	Page No.	Part No.	Page No.
F 6750	.... 8	F 6794	.... 18	F 6837	.... 3	F 7889	.... 14
F 6751	.... 8	F 6795	.... 18	F 6838	.... 11	F 7890	.... 14
F 6752	.... 8	F 6796	.... 18	F 6839	.... 17	F 7891	.... 14
F 6753	.... 8	F 6797	.... 18	F 6840	.... 17	F 7898	.... 14
F 6754	.... 8	F 6798	.... 18	F 6841	.... 17	F 7927	.... 14
F 6755	.... 8	F 6799	.... 18	F 6842	.... 17	F 7928	.... 14
F 6756	.... 8	F 6800	.... 18	F 6843	.... 12	F 7929	.... 14
F 6757	.... 8	F 6801	.... 18	F 6844	.... 17	F 7930	.... 14
F 6758	.... 8	F 6802	.... 18	F 6845	.... 17	F 7931	.... 14
F 6759	.... 8	F 6803	.... 18	F 6846	.... 17	F 7932	.... 14
F 6760	.... 8	F 6804	.... 18	F 6847	.... 17	F 7933	.... 14
F 6761	.... 8	F 6805	.... 18	F 6848	.... 17	F 7934	.... 14
F 6762	...8,10	F 6806	.... 8	F 6849	.... 8	F 7935	.... 14
F 6763	.... 8	F 6808	.... 12	F 7154	.... 11	F 7936	.... 14
F 6764	.... 8	F 6809	.... 12	F 7166	.... 16	F 7937	.... 14
F 6765	.... 4	F 6810	.... 12	F 7194	.... 11	F 7938	.... 14
F 6766	.... 4	F 6811	.... 19	F 7230	.... 13	F 7973	.... 14
F 6767	.... 4	F 6812	.... 19	F 7231	.... 13	F 7974	.... 14
F 6768	.... 4	F 6813	.... 19	F 7232	.... 13	F 7981	.... 13
F 6769	.... 4	F 6814	.... 19	F 7337	.... 3	F 7982	.... 13
F 6770	.... 4	F 6815	.... 19	F 7515	.... 13	F 7985	.... 14
F 6771	.... 4	F 6816	.... 19	F 7541	..12,14	F 8059	.... 12
F 6772	.... 4	F 6817	.... 15	F 7608	.... 13	F 8060	.... 12
F 6773	.... 4	F 6818	.... 19	F 7635	.... 16	F 8064	.... 14
F 6774	.... 4	F 6819	.... 19	F 7637	.... 13	F 8173	.... 13
F 6775	.... 4	F 6820	.... 19	F 7638	.... 13	F 8174	.... 13
F 6776	.... 4	F 6821	.... 19	F 7639	.... 13	F 8175	.... 13
F 6777	.... 4	F 6822	.... 19	F 7640	.... 13	F 8176	.... 13
F 6778	.... 4	F 6823	.... 19	F 7641	.... 13	F 8264	.... 11
F 6779	.... 4	F 6824	.... 19	F 7642	.... 13	F 8279	.... 14
F 6780	.... 4	F 6825	.... 19	F 7643	.... 13	F 8297	.... 13
F 6781	.... 4	F 6826	.... 19	F 7644	.... 13	F 8298	.... 13
F 6782	.... 4	F 6827	.... 19	F 7645	.... 13	F 8301	..5,17
F 6783	.... 4	F 6828	.... 19	F 7671	.... 16	F 8308	.... 13
F 6784	.... 8	F 6829	.... 19	F 7676	.... 16	F 8311	.... 13
F 6785	.... 8	F 6830	.... 19	F 7677	.... 16	FD 25	.... 2
F 6786	.... 8	F 6831	.... 19	F 7716	.... 13	FD 26	.... 2
F 6789	.... 8	F 6832	.... 11	F 7717	.... 13	FT 74	.... 6
F 6790	.... 4	F 6833	.... 17	F 7721	.... 16	FT 75	.... 6
F 6791	.... 19	F 6834	.... 17	F 7722	.... 16	FT 213	.... 8
F 6792	.... 18	F 6835	.... 4	F 7729	.... 16	FT 219	.... 6
F 6793	.... 18	F 6836	.... 3			F 5688066	.. 6

# 1975 SUPPLEMENT

to

# Self-Propelled Baler

# 1973-1974 Parts

# List

Self Propelled  
Hydrostatic Drive

Model 200T and 200W      Model 330T and 330W

The parts listed in the first section of this Supplement are parts which have been added, corrected, or replaced since the 1973-1974 Parts List was published.

Reference numbers shown refer to the corresponding reference number on the 1973-74 Parts Book illustrated page.

Parts listed without reference numbers are parts that are used in relation with other parts shown on the illustrated page of the 1973-74 Parts Book.

The parts and illustrations shown in the last section of this Supplement are a breakdown of the F6736 and F6737 final drive assembly and the F6744 transmission assembly.

---

---

*manufactured and distributed by*



**J. A. FREEMAN & SON, INC.**



---

---

PORTLAND, OREGON



## INDEX

F169 . . . 12	F6850 . . . 12	F6988 . . . 5
F4500 . . . 16	F6851 . . . 1	F6989 . . . 5
F4501 . . . 16	F6852 . . . 1	F6990 . . . 5
F4502 . . . 16	F6853 . . . 18	F6991 . . . 5
F6087 . . . 11	F6854 . . . 18	F6992 . . . 16
F6088 . . . 11	F6855 . . . 1	F6993 . . . 16
F6212 . . . 11	F6856 . . . 1	F6994 . . . 17
F6288 . . . 10	F6858 . . . 4	F6995 . . . 17
F6386 . . . 11	F6859 . . . 19	F6996 . . . 17
F6518 . . . 3, 10	F6865 . . . 2	F6997 . . . 17
F6579 . . . 3, 10	F6866 . . . 2	F6998 . . . 18
F6804 . . . 11	F6867 . . . 1	F6999 . . . 18
	F6868 . . . 2	

### PAGE ONE

#### FRONT END ENGINE BASE AND COWL

Ref. No.	Part No.	Description
1	F6851	Front end main frame section, 3-tie, AC, MK1
1	F6852	Front end main frame section, 2-tie, AC, MK1
	F6855	Engine mount, L.H., Ford
	F6856	Engine mount, R.H., Ford
	F6867	Shim, rear engine mount, Ford

### PAGE TWO

#### OPERATOR PLATFORM

Ref. No.	Part No.	Description
22	F6865	Rear mounting bracket for operators deck, L.H., 3-tie
23	F6868	Rear mounting bracket for operators deck, R.H., 3-tie
	F6866	Mounting angle for deck mounting bracket

### PAGE THREE

#### CLUTCH CONTROL & BELT DRIVE

Ref. No.	Part No.	Description
49	F6579	Shaft coupling, 21 involute, with snap ring groove
	F6818	Snap ring, internal, 125

### PAGE FOUR

#### GEAR SHIFT CONTROL AND OPERATORS SEAT

Ref. No.	Part No.	Description
	F6858	Seat adjusting rails complete

### PAGE FIVE

#### STEERING ASSEMBLY

Ref. No.	Part No.	Description
7	F6991	Steering orbitrol unit with "0" ring ports
10	F6990	3/8" "0" ring adapter, C3269 x 8 x 6 WH
12	F6988	3/8" straight "0" ring swivel fitting 9315 x 8 x 6
71	F6989	3/8" JIC "0" ring male connector, C5315 x 6 x 8

### PAGE TEN

#### HYDROSTATIC DRIVE SYSTEM

Ref. No.	Part No.	Description
47	F6579	Shaft coupling, 21 involute with snap ring groove
	F6518	Snap ring, internal, 125
	F6288	Hose bracket

**PAGE ELEVEN**

**PICKUP LIFT**

Ref. No.	Part No.	Description
13	F6212	Ball rod end, 1/2
	F6087	Pickup lift indicator rod
	F6088	Guide for F6087
	F6386	Bearing, R.H. pickup mount
	F6804	Clamp, 35-413 SM

**PAGE TWELVE**

**ELECTRICAL SYSTEM**

Ref. No.	Part No.	Description
20	F6850	Wire harness, bale counter, wire alarm light
28	F169	Spring for bale counter switch

**PAGE SIXTEEN**

**PICKUP SHIELD, BULLGEAR LUBER**

Ref. No.	Part No.	Description
1	F6992	Front section of pickup shield (not hinged)
6	F6993	Access door for F5971 shield
16	F4500	Bullgear shield, L.H.
17	F4501	Bullgear shield, R.H.
	F4502	Bullgear cover

**PAGE SEVENTEEN**

**THROTTLE CONTROL, TENSION CONTROL & FUEL LINE**

Ref. No.	Part No.	Description
31	F6994	Throttle bracket, AC-MK1
32	F6995	Water separator & fuel filter assembly for AC-MK1, w/ fittings
34	F6996	3/8" line, tank to filter, AC-MK1
37	F6997	3/8" line, filter to engine, AC-MK1

**PAGE EIGHTEEN**

**AIR CLEANER & EXHAUST**

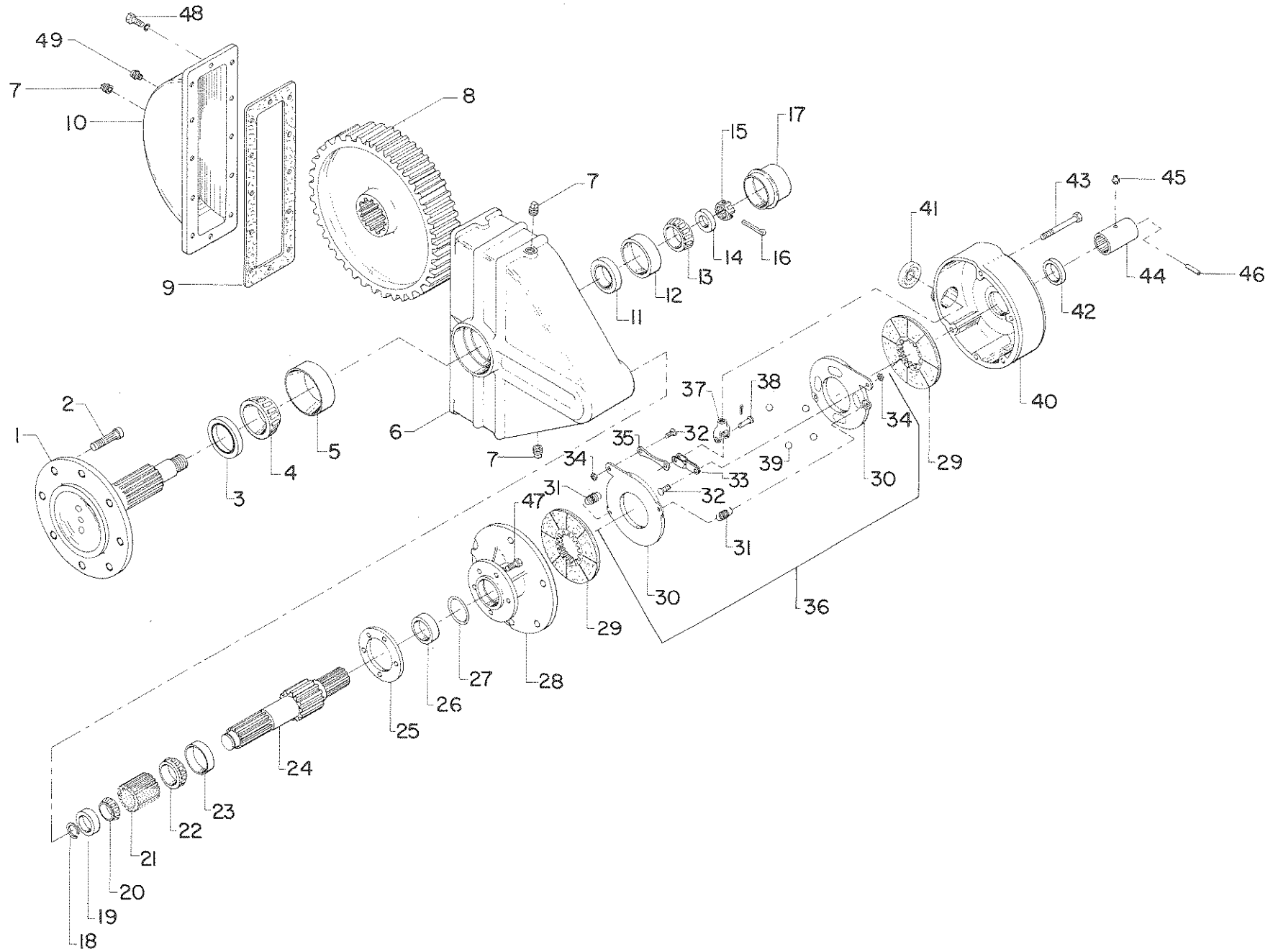
Ref. No.	Part No.	Description
4	F6853	Air cleaner bracket, AC-MK1
12	F6854	Intake elbow, AC-MK1
	F6998	Muffler outlet pipe adapter, C5NN 5B255-A Ford
	F6999	Muffler clamp, 35-326 SM

**PAGE NINETEEN**

**RADIATORS & SHROUD**

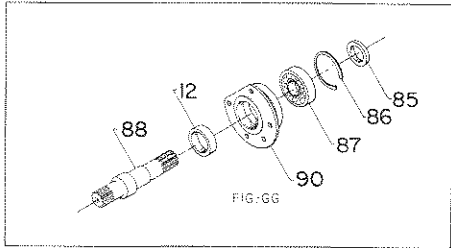
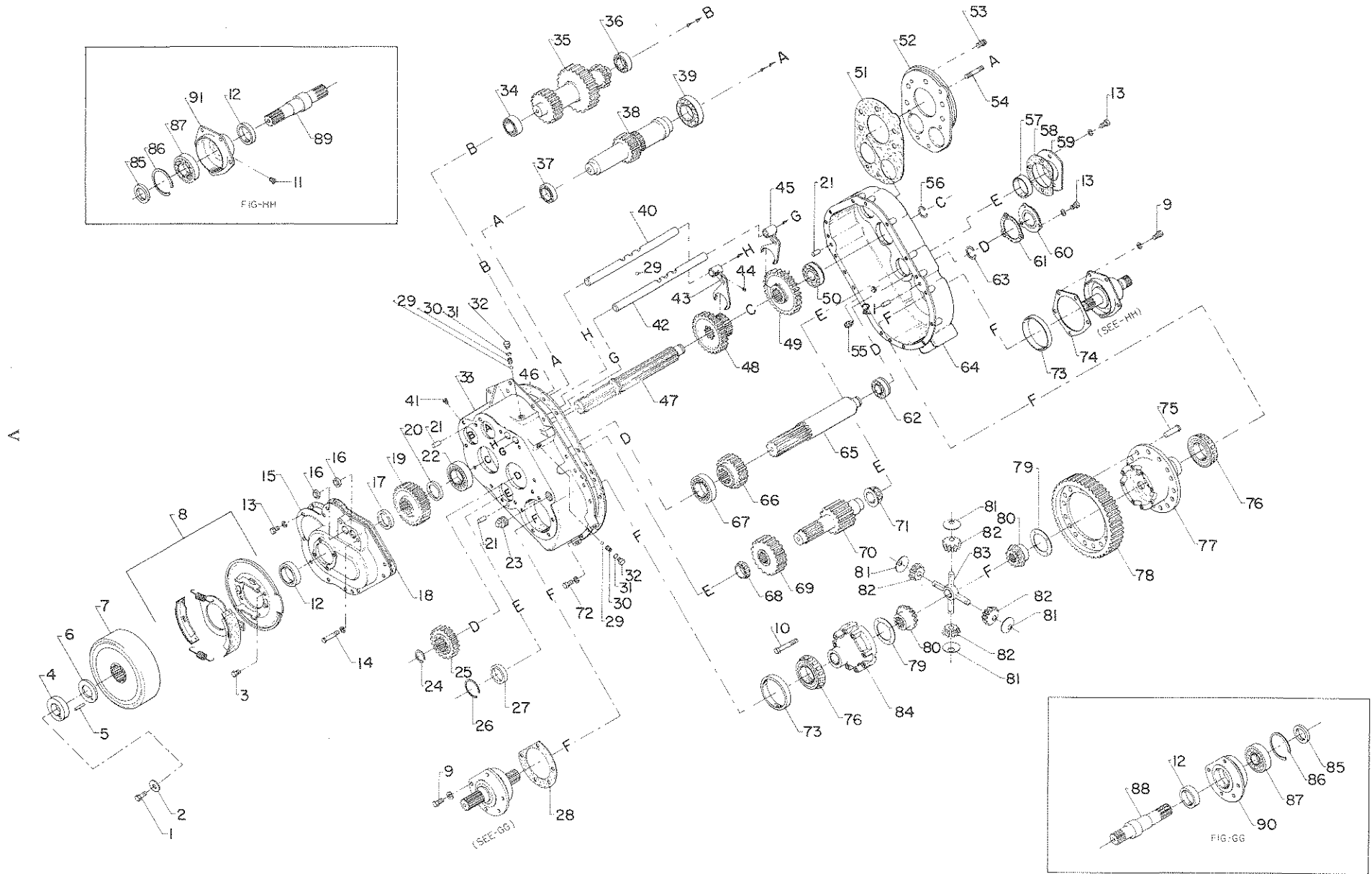
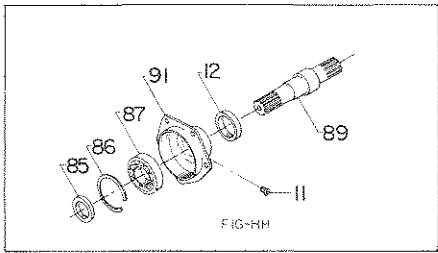
Ref. No.	Part No.	Description
	F6859	Air baffle, top, Ford

III



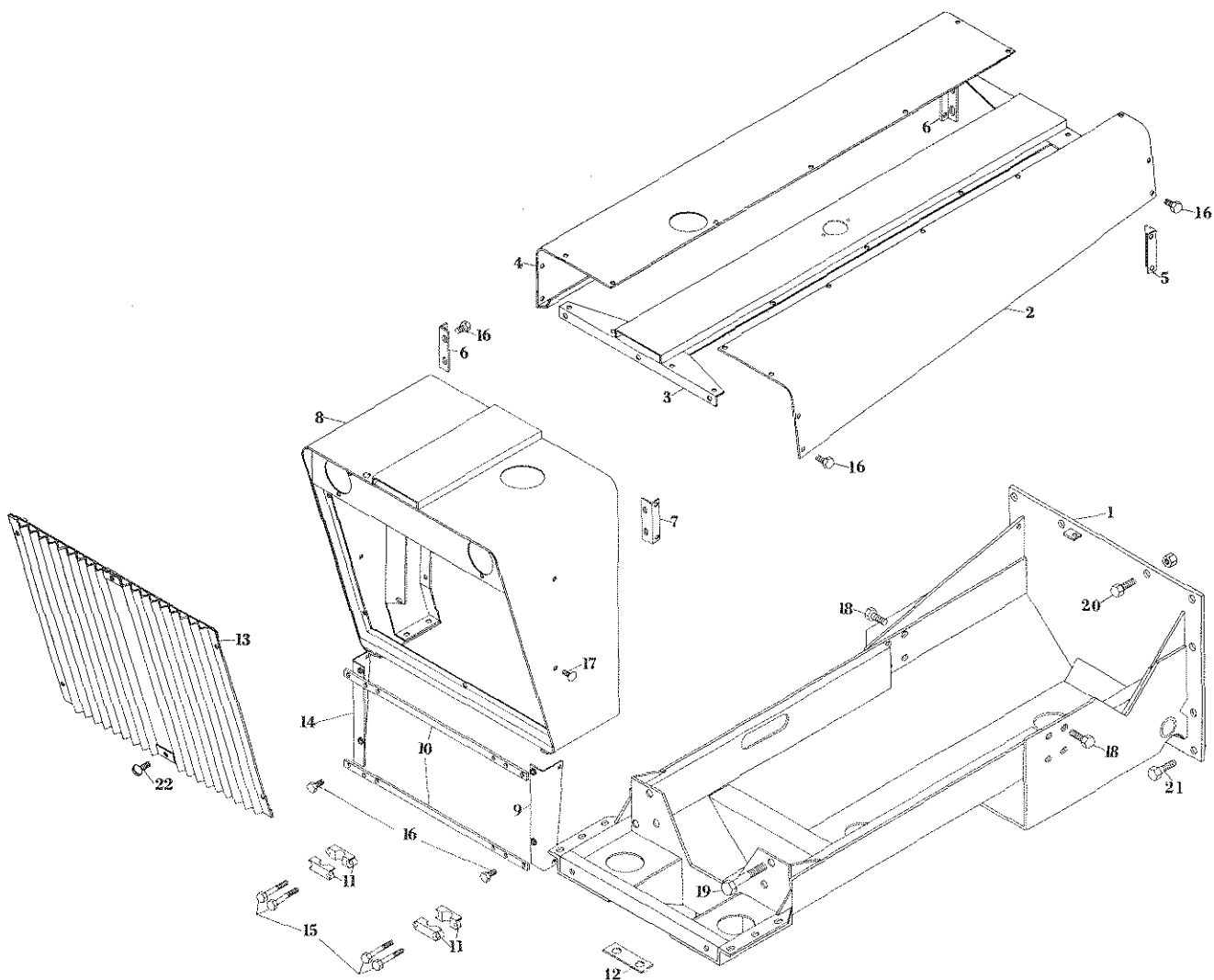
**FINAL DRIVE ASSEMBLY**  
F6536 & F6737

REF. NO.	PART NO.	DESCRIPTION
1	F6871	Shaft, final drive, 3802C991
	F4505	Shaft, final drive
2	F6764	Wheel bolt, 20X273
3	F6872	Oil seal, A1205Z1014
4	F6873	Bearing cone, 395S
	F4503	Bearing cone, 29590
5	F6874	Bearing cup, 394A
	F4504	Bearing cup, 29521
6	F6875	Housing, 3287W179
7		3/4" pipe plug, P112
8	F6876	Final drive gear, 3892Z2132
9	F6877	Gasket, 2808S903
10	F6878	Pan, 3855M195
11	F6879	Spacer, 1844E551
12	F7993	Bearing cup, 25520
13	F6880	Bearing cone, 25580
14	F6881	Washer, 1829W673
15		1-1/4" NF hex slotted nut, 14X57
16		Cotter pin, 1/8" x 1-1/2", K2414
17	F6882	Cap, 3262M221
18	F6883	Snap ring, 1854M65
19	F6884	Bearing cup, 15245
20	F6885	Bearing cone, 15123
21	F6886	Pinion, 3891P1160
22	F6887	Bearing cone, 26882
23	F6888	Bearing cup, 26822
24	F6889	Shaft, 3280X4886
25	F6890	Shim, .003 thick, 2803Q1863
	F6891	Shim, .005 thick, 2803P1862
	F6892	Shim, .010 thick, 2803R1864
26	F6893	Oil seal, 1805C159
27	F6894	"O" ring, 5X715
28	F6895	Adapter for RH brake housing, 3268D576
	F6896	Adapter for LH brake housing, 3268D575
29	F6897	Brake disc and lining, MA66780
30	F5898	Actuating shoe, BP6600
31	F5901	Spring, BP4504
32	F5904	Shoulder bolt, BP53050
33	F5899	Link, double leaf, BA669
34		5/16" NF jam nut, BP7005
35	F5900	Link, BA668
36	F5903	Brake pressure plate assembly, AA671
37	F6898	Yoke, 1845W23
38	F6161	Clevis pin, 7/16" x 1-1/4", X1566
39	F5902	Ball, BP8750
40	F6899	Brake housing, RH, 3897N2068
	F6900	Brake housing, LH, 3897N2067
41	F6901	Boot enclosure, 2847H580
42	F6902	Oil seal, A1805L376
43		7/16" x 3-3/4" Grade 8 cap screw, S-1730-1, 5 used
		7/16" lock washer, W-17, 5 used
		7/16" Grade 8 nut, N-17-1, 5 used
44	F6741	Sleeve, 1199-V-2856
45	F6170	Grease fitting
46	F6903	Roll pin, 3/16" x 2"
47	F6904	Cap screw, 3X365
48		3/8" x 3/4" Grade 8 cap screw, S-266-1
49	F1720	Vent



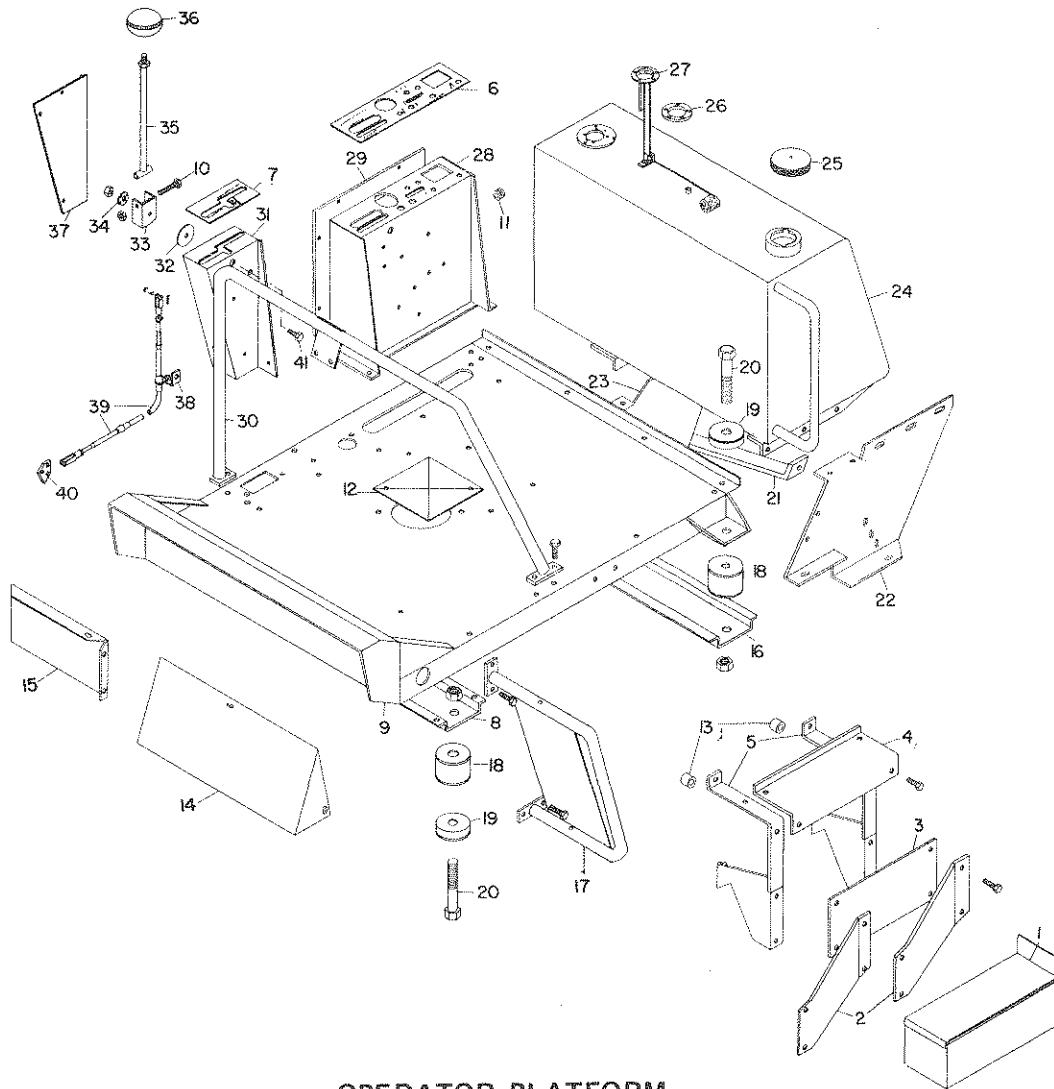
**TRANSMISSION ASSEMBLY**  
F6744

EF. NO.	PART NO.	DESCRIPTION	REF. NO.	PART NO.	DESCRIPTION
1		1/2" x 1-1/4" NC Grade 8 Cap screw, 3X374	51	F6946	Clutch housing gasket, 2208W777
2		1/2" washer, 1229C1511	52	F6947	Hydraulic motor adapter, 3268S799
3		3/8" x 7/8" NC Grade 8 cap screw, S-267-1, 4 used	53		Cap screw, 3X365, 3 used Cap screw, 10X952, 4 used
4	F6905	Washer w/pin, A1829K661	54	F6948	Stud, SN818-1
5	F6906	Dowel pin, 1846E213	55	F6949	Drain plug, 3/4" pipe, magnetic, 1250B184
6	F6907	Gasket, 2808L922			
7	F6908	Brake drum, 3219W3247	56	F6950	Snap ring, 1854Y129
8	F6909	Brake assembly, DIM7-4	57	F7996	Bearing cup, 25821
9		3/8" x 1-1/2" NC Grade 8 cap screw, S269-1, 10 used	58	F6952	Shim, .003", 2203F5570
10	F6910	Cap screw, 10X570, 8 used		F6953	Shim, .005", 2203E5569
11	F6911	Relief fitting, 1898F812	59	F6954	Shim, .010", 2203D5568
12	F6912	Oil seal, A1205G1047, 3 used	60	F6955	Bearing cap, 3266W309
13		3/8" x 1" NC Grade 8 cap screw, S268-1, 15 used	61	F6956	Bearing cap, 3266M299
14		3/8" x 2-1/4" NC Grade 8 cap screw, S2618-1, 2 used	62	F6957	Gasket, 2808U905
15	F6913	Change gear case, 3290T46	63	F6958	Ball bearing with snap ring, 1828Q147
16	F6914	Oil seal, 1205N1132, 2 used	64	F6959	Snap ring, 1229Y1299
17	F6915	Spacer, 1244R1162	65	F6960	Transmission case, 3290B106
18	F6916	Gasket, 2208D732	66	F6961	Intermediate shaft, 3280M5499
19	F6917	Drive change gear, 37 tooth, 3892J3052	67	F6962	Intermediate 2nd drive gear, 21tooth, 3892Q2981
20	F6918	Spacer, 1244Q1161	68	F6963	Ball bearing, 1828D290
21	F6919	Dowel pin, 1846 H216, 4 used	69	F6885	Bearing cone, 15123
22	F6920	Roller bearing, 1228B366		F6964	Intermediate drive gear, 27 tooth, 3892U2985
23		3/4" pipe plug	70	F6965	Differential drive pinion shaft, 3892S2983
24	F6921	Snap ring, 1854V152	71	F6966	Bearing cone, 25878
25	F6922	Driven change gear, 26 tooth, 3892G3049	72		7/16" x 1-3/8" NC Grade 8 cap screw, S2711-1, 17 used 7/16" x 2-1/8" NC Grade 8 cap screw, S2717-1, 1 used
26	F6923	Snap ring, 1854R200			
27	F6884	Bearing cup, 15245			
28	F6924	Gasket, 2208Z728	73	F6967	Bearing cup, 382A, 2 used
29	F6925	Ball, 1898 E 57, 4 used	74	F6968	Shim, .003", 2803H1854
30	F6926	Detent spring, 1218Y103, 2 used		F6969	Shim, .005", 2803J1856
31	F6927	Gasket, 2208V204, 2 used		F6970	Shim, .010", 2803K1857
32	F6928	Screw, detent spring, 3X204, 2 used	75	F6971	Rivet, RV7814, 12 used
33	F6929	Transmission case cover, 3289M39	76	F6972	Bearing cone, 2 used, 387A
34	F6930	Roller bearing, 1828T280	77	F6973	Differential case, flange half, 3235B1042
35	F6931	Counter shaft cluster gear, 25,38,15 tooth, 3892N2978	78	F6974	Differential ring gear, 60 tooth, 3892W2987
36	F6932	Ball bearing, 1828T306			
37	F6933	Ball bearing, 1828Y129	79	F6975	Thrust washer, 1229W1427, 2 used
38	F6934	Input gear, 3892A2965	80	F6976	Differential side gear, 2234X713, 2 used
39	F6935	Ball bearing, 1228C367			
40	F6936	Shift rail for second and third shift fork, 2297W1947	81	F6977	Thrust washer, 1229Z1196, 4 used
41		1/8" pipe plug	82	F6978	Differential pinion, 2233T124, 4 used
42	F6937	Shift rail for first and reverse shift fork, 2297X1948	83	F6979	Differential spider, 3278L64
43	F6938	Shift fork for second and third sliding gear, 3296H34	84	F6980	Differential case, plain half, 3235C1043
44	F6939	Lock screw, 26X104	85	F6981	Bearing retainer, 1199U2855, 2 used
45	F6940	Shift fork for first and reverse sliding gear, 3296F32	86	F6982	Snap ring, 1854X180, 2 used
46	F6941	Gasket, transmission case to cover, 2208U749	87	F6983	Ball bearing, 1228L428, 2 used
47	F6942	Main transmission shaft, 3280M 4450	88	F6984	Shaft, inner axle, R.H., 3280G4453
48	F6943	Second and third sliding gear, 32 & 19 tooth, 3892L2976	89	F6985	Shaft, inner axle, L.H., 3280H4454
49	F6944	First and reverse sliding gear, 42 tooth, 3892J2974	90	F6986	Bearing cage, R.H., 3266Y311
50	F6945	Ball bearing w/ snap ring, 1828S227	91	F6987	Bearing cage, L.H., 3266A313



**FRONT END ENGINE BASE AND COWL**

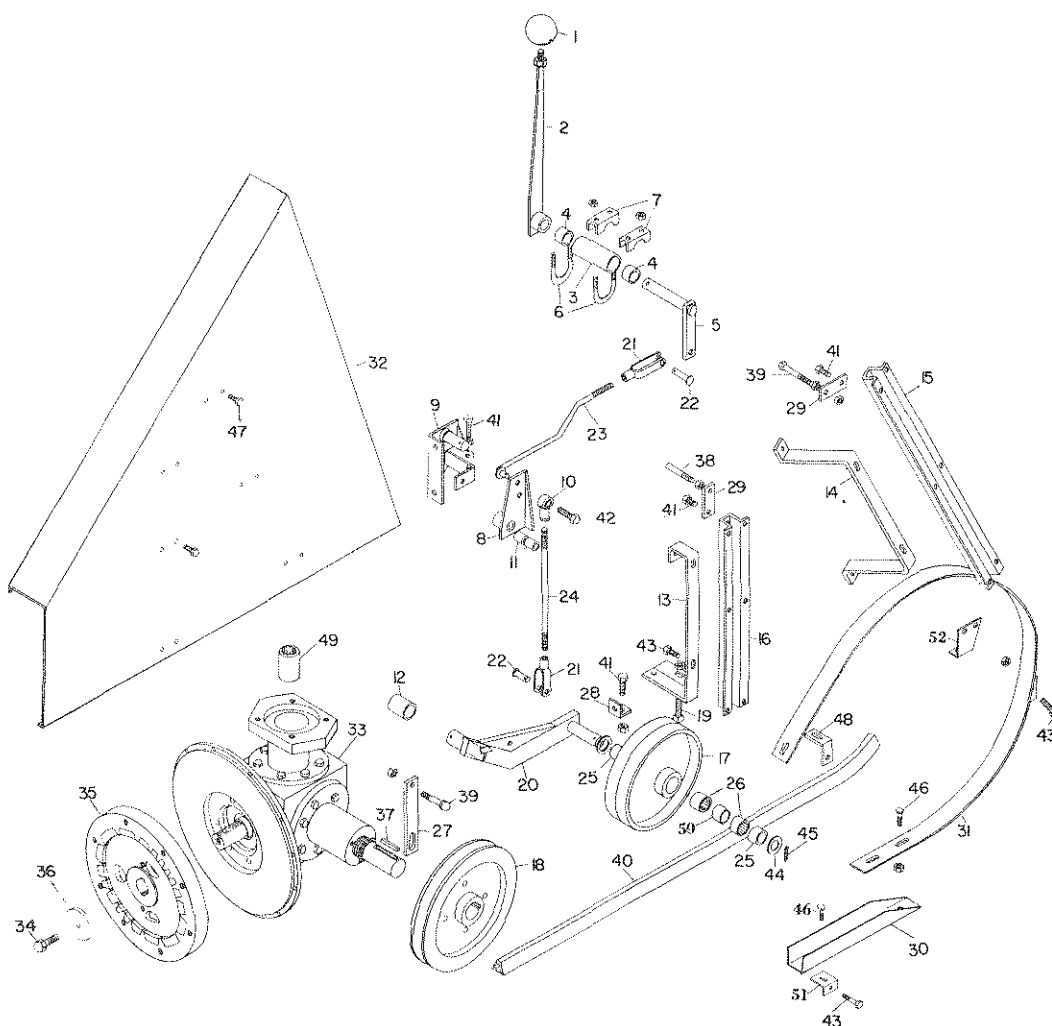
REF. NO.	PART NO.	DESCRIPTION	REF. NO.	PART NO.	DESCRIPTION
1	F 6469	Front end main frame section, 3-tie, IHC	6	F 6474	Hood bracket right side, 2 used
	F 6573	Front end main frame section, 2-tie, IHC	7	F 6475	Hood bracket, left front
	F 6696	Front end main frame section, 3-tie, AC	8	F 6476	Engine front cowl
	F 6697	Front end main frame section, 2-tie, AC	9	F 6733	Oil cooler bracket, L.H.
	F 6698	Front end main frame section, 3-tie, Ford	10	F 6622	Oil cooler bar, 2 used
	F 6699	Front end main frame section, 2-tie, Ford	11	F 6623	Oil cooler clamp, 2-piece, 4 sets used
2	F 6470	Engine cowl, left side, IHC	12	F 6561	Shim, motor mount, IHC
	F 6700	Engine cowl, left side, AC	13	F 6605	Front end grill
	F 6701	Engine cowl, left side, Ford	14	F 6732	Oil cooler bracket, R.H.
3	F 6471	Engine cowl, center, IHC	15		1/4" x 2-1/4" NC cap screw
	F 6702	Engine cowl, center, AC	16		5/16" x 3/4" NC cap screw
	F 6703	Engine cowl, center, Ford	17		5/16" x 3/4" carriage bolt
4	F 6472	Engine cowl, right side, IHC	18		1/2" x 1-1/2" NC cap screw
	F 6704	Engine cowl, right side, AC	19		5/8" x 4" NF Cap Screw, IHC
	F 6705	Engine cowl, right side, Ford	20		1/2" x 1-1/2" NF HT cap screw
5	F 6473	Hood bracket, left rear	21		1/2" x 1-3/4" NF HT cap screw
			22		5/16" x 3/4" machine screw



### OPERATOR PLATFORM

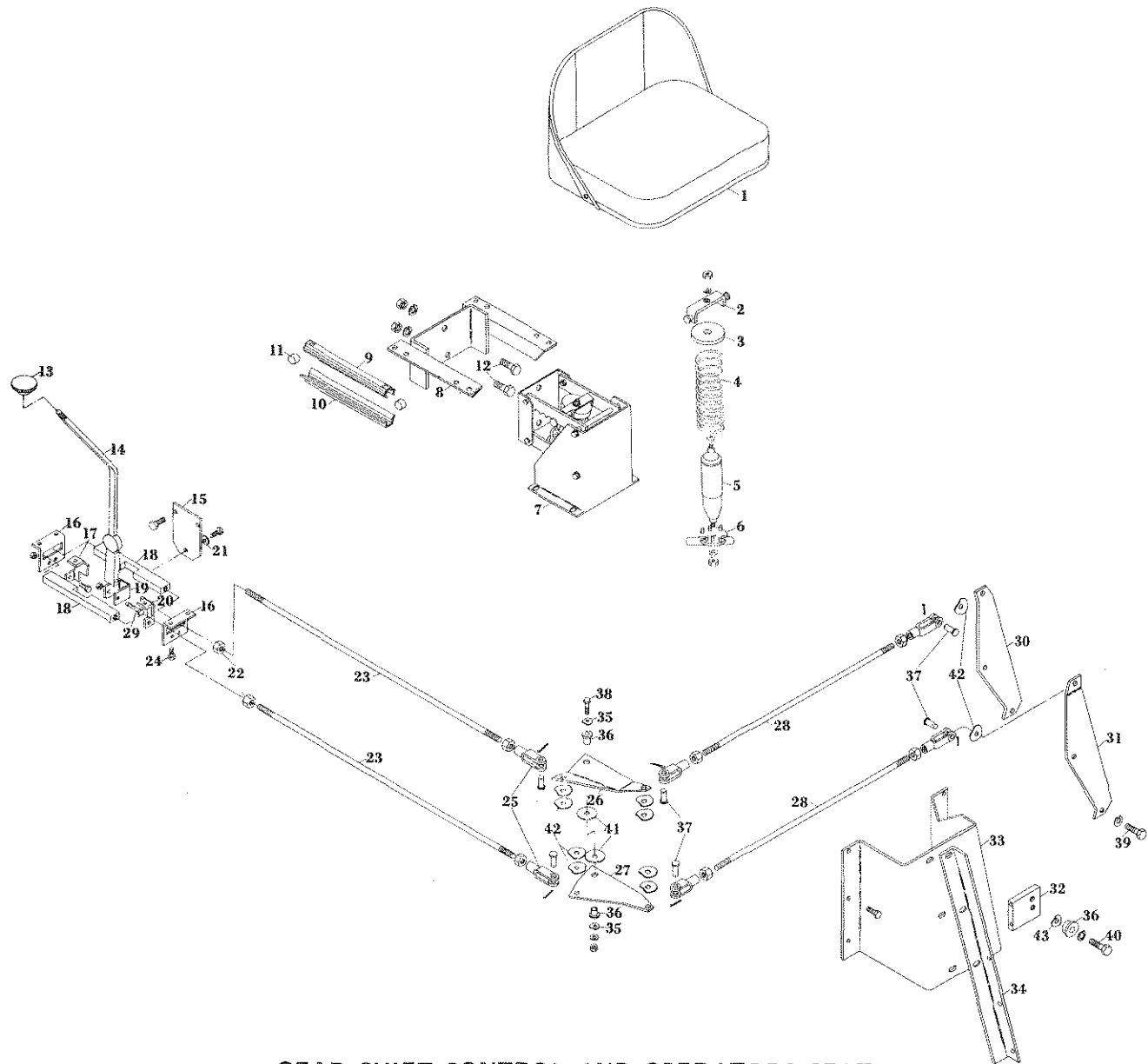
REF. NO.	PART NO.	DESCRIPTION	REF. NO.	PART NO.	DESCRIPTION
1	F 6270	Step and tool box	23	F 6609	Rear mounting bracket for operators deck, R.H., 3-tie
2	F 6271	Step and tool box bracket		F 6654	Rear mounting bracket for operators deck, R.H., 2-tie
3	F 6272	Step and tool box bracket plate	24	F 5947	30 gal. fuel tank, less fuel gauge
4	F 6273	Step plate	25	F 1689	Fuel tank cap for F 5947 tank
5	F 6274	Step bracket	26	F 5949	Gasket for F 5948 gauge
6	FD 25	Decal, main console	27	F 5948	Fuel gauge for F 5947 tank
7	FD 26	Decal, speed control console	28	F 6413	Console, Main section
8	F 6713	Front deck mount channel	29	F 6032	Console cover
9	F 6714	Main operator deck	30	F 6402	Guard rail and steering shaft mounting bracket
10		1/4" x 2-3/4" N.C. cap screw	31	F 6282	Speed control console
11	F 6069	Rubber grommet	32	F 5546	Friction disc
12	F 6412	Cover plate, pump inspection hole	33	F 6280	Speed control lever arm
13	F 6410	Spacer	34	F 5551	Conical washer
14	F 6481	Front deck shield, L.H.	35	F 6279	Speed control lever
15	F 6482	Front deck shield, R.H.	36	F 6278	Speed control lever knob
16	F 6175	Rear deck mount channel	37	F 6281	Speed control console cover
17	F 6562	Hand rail and shield	38	F 6291	Speed control cable clamp angle
18	F 6183	Deck mount, neoprene, 3" x 3/4" x 1-3/4" w/washer	39	F 6283	Speed control cable
19	F 6182	Deck mount, neoprene, 3" x 3/4" x 1/2" w/washer	40	F 6290	Speed control lever, lower
20		1/2" x 3-3/4" NF cap screw w/lock nut	41		5/16" x 1" NC cap screw
21	F 6067	Brace for rear mounting bracket			
22	F 6607	Rear mounting bracket for operators deck, L.H., 2-tie			
	F 6608	Rear mounting bracket for operators deck, L.H., 3-tie			





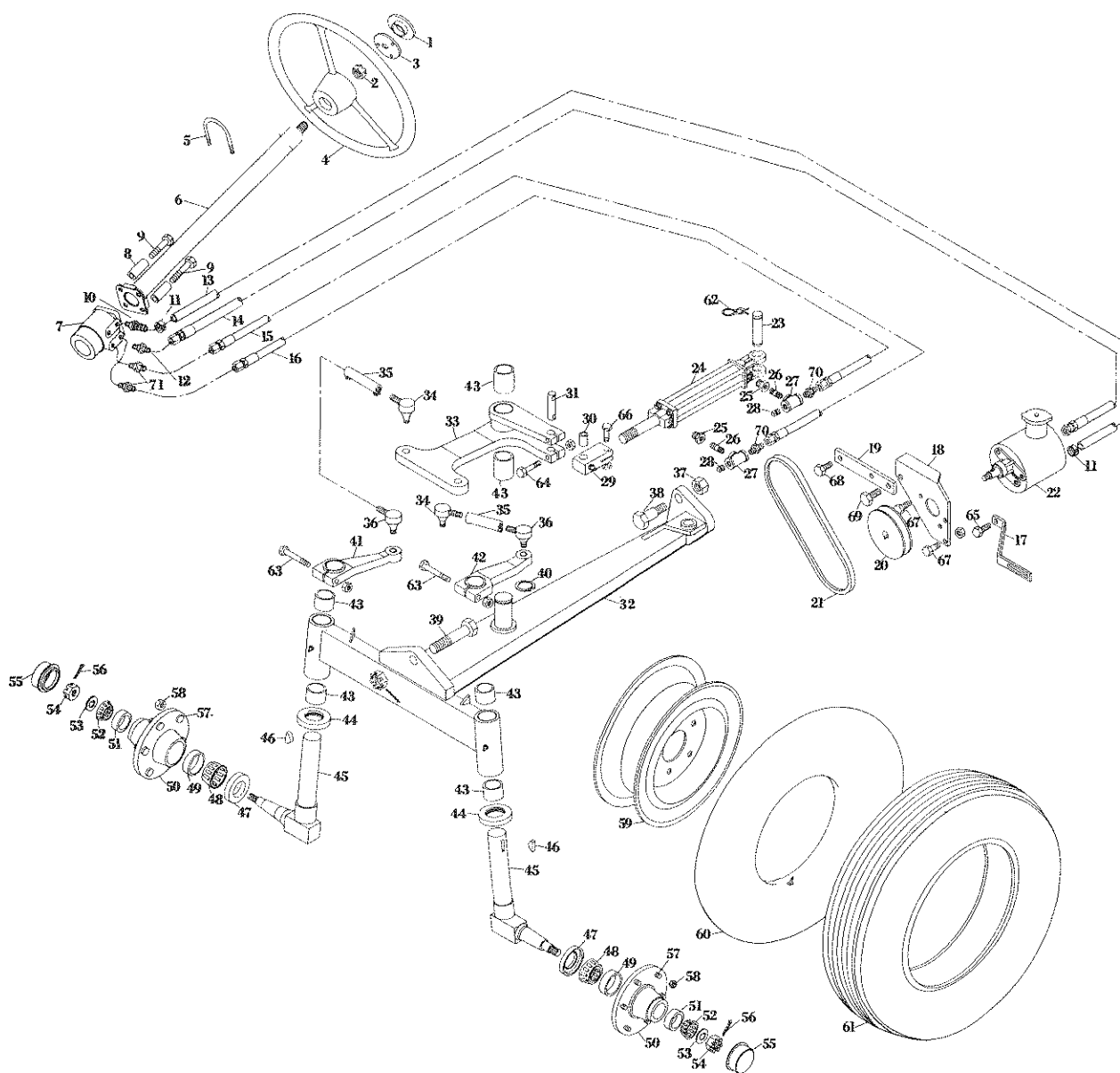
### CLUTCH CONTROL AND BELT DRIVE

REF. NO.	PART NO.	DESCRIPTION	REF. NO.	PART NO.	DESCRIPTION
1	F 5055	Lever knob	24	F 6222	Lower clutch rod
2	F 6563	Clutch lever	25	F 6223	Inner race for idler pulley, 2 used
3	F 6206	Clutch lever bearing complete w/bushing, 3-tie	26	F 6224	Bearing for idler pulley, 2 used
	F 6332	Clutch lever bearing complete w/bushing, 2-tie	27	F 6483	Top front belt guide
4	F 6054	Clutch lever bearing bushing, 1" x 1-1/8" x 1", 2 used	28	F 6226	Front belt shield bracket pad
5	F 6564	Clutch shaft, 3-tie	29	F 6227	Top rear belt guide
	F 6565	Clutch shaft, 2-tie	30	F 6228	Bottom rear belt guide
6	F 6208	"U" bolt bearing clamp, 012 Chicago	31	F 6624	Rear belt guide
7	F 6209	"U" bolt bearing clamp bracket	32	F 6230	Belt shield
8	F 6715	Clutch wobble arm	33	F 6484	Gear box
9	F 6716	Clutch wobble arm bracket	34	F 6485	1/2" x 1-1/2" NF cap screw w/LH thread
10	F 6212	Ball rod end, CTR8N Sperico	35	F 6486	Drive plate assembly
11	F 6717	Bushing for clutch wobble arm, 1-1/8" x 1-1/4" x 1", 2 used	36	F 6487	Washer
12	F 4137	Bushing for belt tightener arm bearing bracket, 1-3/8" x 1-1/2" x 2"	37		Key for pulley, 3/8" x 3/8" x 2-3/4"
13	F 6547	Belt shield bracket, front	38	F 6465	Belt guide stud
14	F 6214	Belt shield bracket, rear	39		3/8" x 3-3/4" NC cap screw
15	F 6215	Belt shield & guide bracket, rear	40	F 7337	Drive belt, D 162
16	F 6216	Belt shield & guide bracket, front	41		3/8" x 1" NC cap screw
17	F 6217	Belt tightener pulley	42		1/2" x 1-3/4" NC cap screw
18	F 6218	Drive pulley	43		5/16" x 1" NC cap screw
19		1/2" x 2-1/2" square head set screw	44		1" I.D. x 1-3/4" O.D. washer
20	F 6220	Belt tightener arm	45		3/16" x 1-1/2" cotter key
21	F 5048	1/2" clevis	46		5/16" x 3/4" carriage bolt
22	F 5049	Clevis pin for 1/2" clevis	47		1/4" x 3/4" NC cap screw
23	F 6221	Top clutch rod	48	F 6432	Top belt guide bracket
			49	F 6341	Shaft coupling, 21 involute
			50	F 6574	Spacer, idler pulley bearing
			51	F 6836	Bottom rear belt guide bracket
			52	F 6837	Knottter chain shield bracket, center



### GEAR SHIFT CONTROL AND OPERATORS SEAT

REF. NO.	PART NO.	DESCRIPTION	REF. NO.	PART NO.	DESCRIPTION
1	F 5918	Seat assembly	21	F 1002	Conical washer
	F 5920	Bottom seat cushion for F 5918	22		1/2" N.F. nut
	F 5921	Back cushion for F 5918	23	F 6775	Shift rail rod, 38-1/2", 2 used
2	F 5501	Spring and cylinder adjusting bracket	24		5/16" x 1" N.C. cap screw
3	F 5502	Cup washer for F 5705 spring	25	F 6835	1/2" clevis, narrow, 6 used
4	F 5705	Spring, F 5703 seat assembly	26	F 6772	Shift rod bell crank, top
5	F 5866	Shock absorber	27	F 6773	Shift rod bell crank, bottom
6	F 5505	Plate, bottom pivot	28	F 6774	Shift rod, 29-3/4", 2 used
7	F 5703	Seat spring and hydraulic assembly complete	29		5/16" x 2-1/2" N.C. cap screw
8	F 5867	Seat bracket	30	F 6776	Gear shift bell crank, front
9	F 6080	Seat adjusting rail (bottom)	31	F 6777	Gear shift bell crank, rear
10	F 6079	Seat adjusting rail (top)	32	F 6778	Bell crank bracket
11	F 6081	Roller for seat adjusting rails	33	F 6779	Transmission support
12		1/2" x 1-3/4" N.C. cap screw	34	F 6780	Transmission support brace
13	F 5055	Gear shift lever knob	35	F 6781	Wave washer, 2 used, WW-284-S-20
14	F 6765	Gear shift lever	36	F 440	Ferrule
15	F 6766	Gear shift lever bracket	37	F 6790	Clevis pin for 1/2" clevis
16	F 6767	Shift rail guide, 2 used	38		3/8" x 2" N.C. cap screw
17	F 6768	Shift rail separator, front	39		5/16" x 1-3/4" N.C. cap screw
18	F 6769	Shift rail, 2 used	40		3/8" x 1" N.C. cap screw
19	F 6770	Gear shift lever swivel	41	F 246	Spacer washer
20	F 6771	Shift rail separator, rear	42	F 6782	Bow washer, 10 used, 270-S-12
			43	F 6783	Bow washer, 2 used, 400-S-8

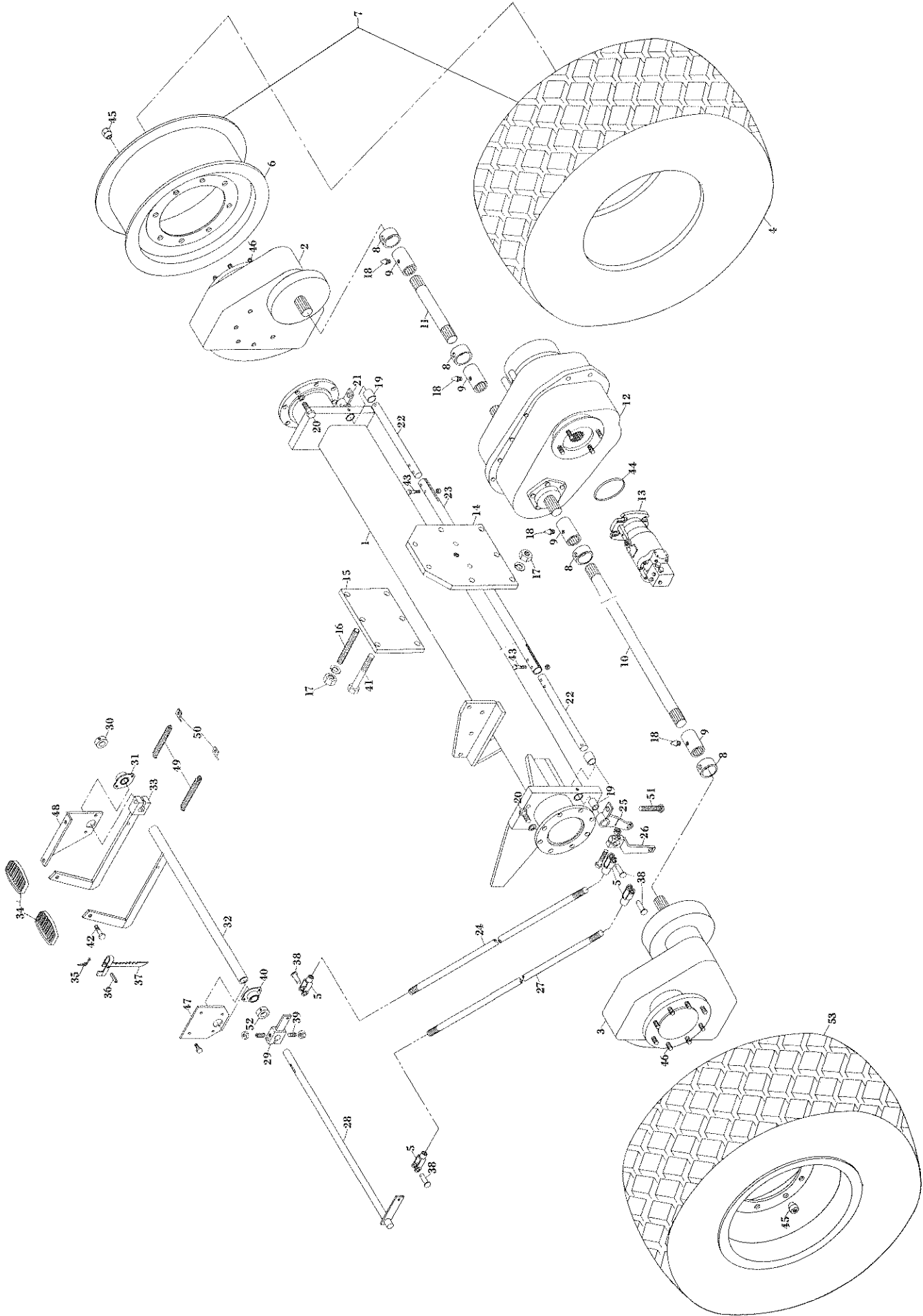


### STEERING ASSEMBLY

REF. NO.	PART NO.	DESCRIPTION
1	F 5031	Steering column cap, 18" wheel
	F 6576	Steering column cap, 14" wheel
2	F 6323	Nut, steering column, 13/16" - 20
3	F 5032	Steering column cap holder, 18" wheel
4	F 6292	Steering wheel, 18"
	F 6575	Steering wheel, 14"
5	F 6324	"U" bolt
6	F 6415	Steering orbitrol column
7	F 6293	Steering orbitrol control unit
8	F 6294	Pipe spacer for steering motor mounting
9		3/8" x 3-1/2" NC cap screw
10	F 6488	Barbed hose end, 3/8"
11	F 8301	Hose clamp, GS-4 Murray
12	F 6463	3/8" straight swivel fitting
13	F 6489	3/8" return hose, 104"
14	F 6490	3/8" hydraulic hose w/one 3/8" male fitting & one female fitting, 102"
15	F 6630	1/4" Hydraulic hose w/J.I.C. female fitting, 76"

## STEERING ASSEMBLY—Cont.

REF. NO.	PART NO.	DESCRIPTION
16	F 6631	1/4" Hydraulic hose w/ J.I.C. female fitting, 66"
17	F 6493	Hydraulic pump tightener, IHC gasoline
	F 6688	Hydraulic pump tightener, AC
	F 6689	Hydraulic pump tightener, Ford
18	F 6494	Hydraulic pump mounting bracket, IHC gasoline
	F 6495	Hydraulic pump mounting bracket, AC diesel
	F 6690	Hydraulic pump mounting bracket, Ford
19	F 6496	Pump bracket, IHC
	F 6691	Pump bracket, AC
	F 6692	Pump bracket, Ford
20	F 5614	Sheave, hydraulic pump drive, IHC & Ford
	F 6693	Sheave, hydraulic pump drive, AC
21	F 6497	Belt, hydraulic pump drive, AX48, IHC
	F 6694	Belt, hydraulic pump drive, AX56, AC
	F 6695	Belt, hydraulic pump drive, AX46 Ford
22	F 5688066	Hydraulic pump assembly
23	F 6498	Cylinder pivot pin
24	F 6519	Steering cylinder, 2" x 8"
	F 6599	Repair kit for F 6519
25		1/2" x 1/4" reducer bushing
26		1/4" NPT close nipple
27	FT 74	1/4" pipe tee
28	FT 75	1/4" pipe plug
29	F 6499	Steering cylinder rod end
30	F 6500	Bushing, 3/4" x 7/8" x 1-1/4"
31	F 6501	Cylinder rod pin
32	F 6539	Front axle assembly
33	F 6503	Steering bell crank
34	F 6504	Tie rod end. R.H.
35	F 6505	Drag link
36	F 6506	Tie rod end. L.H.
37		3/4" NF hex nut
38	F 5023	Front axle shoulder bolt
39	F 6507	Front axle pivot bolt w/castillated nut
40	F 6508	Snap ring, 175
41	F 6509	Steering arm, right
42	F 6510	Steering arm, left
43	F 5854	Spindle bushing, 1-3/4" x 2" x 1-1/2", 2 pair used
44	F 5769	Thrust bearing, D21
45	F 6587	Front spindle, R.H. & L.H.
46	F 83	Woodruff key, 3/8" x 1-1/4"
47	F 1627	Front wheel grease seal, 54605 K.H.
48	F 1625	Front wheel bearing, inner. No.LM29749
49	F 1653	Cup for bearing, inner, No.LM29710
50	F 1624	Front wheel hub, 6-hole
51	F 1654	Cup for bearing, outer, No.L44610
52	F 1626	Front wheel bearing, outer, No.L44640
53	F 884	Spindle washer
54	F 934	Nut for spindle
55	F 1628	Hub cap
56		Cotter key, 1/8" x 1-1/4"
57	F 462	Lug bolt, 12 used
58	F 214	Lug nut, 12-used No.15085
59	F 5650	Wheel, front, 6-hole
60	F 5040	Tube for front tire, 6:70 x 15
61	F 5039	Tire, front 6:70 x 15, 6-ply
62	F 6511	Hairpin for cylinder pin
63		1/2" x 3-3/4" NF HT cap screw w/locknut
64		5/16" x 2-1/2" NC cap screw
65		5/16" x 3/4" NC cap screw
66		3/8" x 1-3/4" NC cap screw
67		5/16" x 1" NC cap screw
68		7/16" x 1-1/2" NC cap screw
69		5/8" x 1-1/2" NF cap screw
70	FT 219	3/8" J.I.C. male connector, C 5205 x 6
71	F 6632	3/8" J.I.C. male connector, C 5205 x 6 x 6

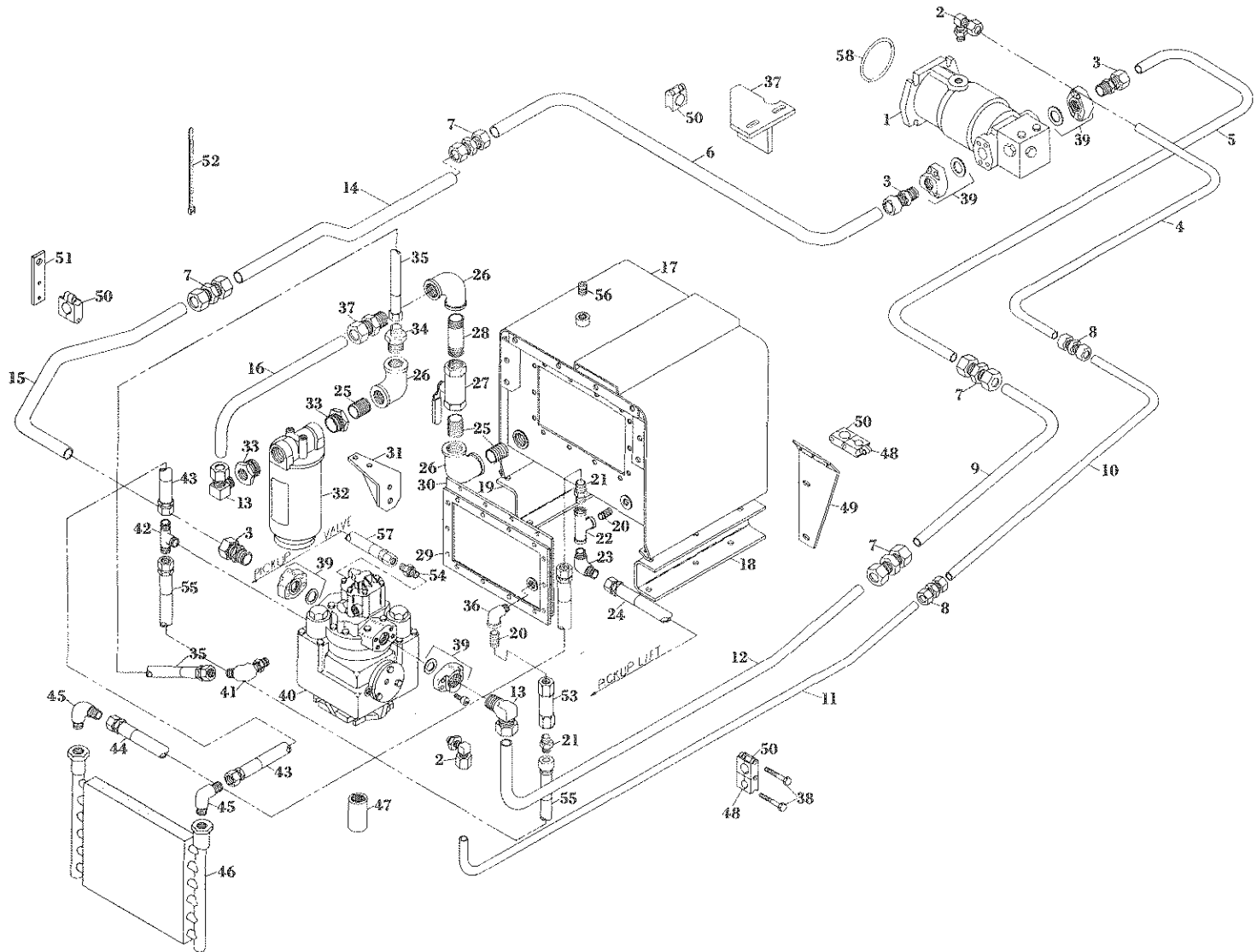


## REAR AXLE AND FINAL DRIVE

REF. NO.	PART NO.	DESCRIPTION
1	F 6734	Axle tube, 200
	F 6735	Axle tube, 330
2	F 6736	Final drive, R.H. S1100-4
3	F 6737	Final drive, L.H. S1100-5
4	F 6538	Flotation tire, 10-ply, L.H., 18.4 x 16A
	F 5275	Flotation tire, 6-ply, R.H., 18.4 x 16A
	F 5276	Tube, 18.4 x 16A
5	F 5075	Clevis, 5/16" R.H. thread
6	F 6738	Rear wheel
7	F 6739	Tire and wheel assembly, R.H.
8	F 6740	Grease fitting protector, 4 used
9	F 6741	Sleeve, 4 used, 1199-V-2856
10	F 6742	Axle shaft, L.H., 3 tie
	F 6789	Axle shaft, L.H., 2 tie
11	F 6743	Axle shaft, R.H.
12	F 6744	Transmission, T-1250-A14
13	F 6235	Hydrostatic Motor
14	F 6745	Transmission plate, rear
15	F 6746	Transmission plate, front
16	F 6747	3/4" x 6" N.C. Stud bolt
17		3/4" NC Nut
18	F 6170	Grease fitting
19	F 6718	Bushing, 1" x 1-1/8" x 1-1/4"
20		5/8" x 1-1/2" N.C. cap screw
21	F 6748	Brake lever
22	F 6749	Brake shaft end, 2 used
23	F 6750	Brake shaft, 330
	F 6751	Brake shaft, 200
24	F 6752	Brake control rod for R.H. Brake
25	F 6753	Brake bell crank
26	F 6754	Brake shaft lever
27	F 6755	Brake control rod for L.H. brake
28	F 6756	Brake pedal shaft, 3 tie
	F 6721	Brake pedal shaft, 2 tie
29	F 6757	Brake pedal shaft lever
30		7/8" set collar
31	F 6758	Bearing, brake pedal shaft, 7/8", FBE14G
32	F 6759	Brake pedal, L.H., 3 tie
	F 6722	Brake pedal, L.H., 2 tie
33	F 6760	Brake pedal, R.H.
34	F 5979	Brake pedal pad
35	F 4210	Spring for brake release
36		1/4" x 1-1/2" roll pin
37	F 5984	Brake pedal lock
38	F 5076	5/16" clevis pin
39		3/8" x 3/4" N.C. socket set screw, half dog point
40	F 6761	Bearing, brake pedal shaft, 1-1/4", FBE 20G
41		3/4" x 6-1/2" N.C. cap screw, 5 used
42		5/16" x 1" N.C. cap screw
43		5/16" x 2" N.C. cap screw
44	F 6762	"O" Ring, O1-048
45	F 6763	Lug Nut, 16 used, x 1148
46	F 6764	Lug bolt, 16 used, 20 x 273
47	F 6784	Bearing bracket, L.H.
48	F 6785	Bearing bracket, R.H.
49	FT 213	Spring, brake pedal release
50	F 6786	Anchor, pedal spring
51	F 6849	Adjusting bolt with conical nut
52		1-1/4" set collar
53	F 6806	Tire and wheel assembly, L.H.

## HYDROSTATIC DRIVE SYSTEM

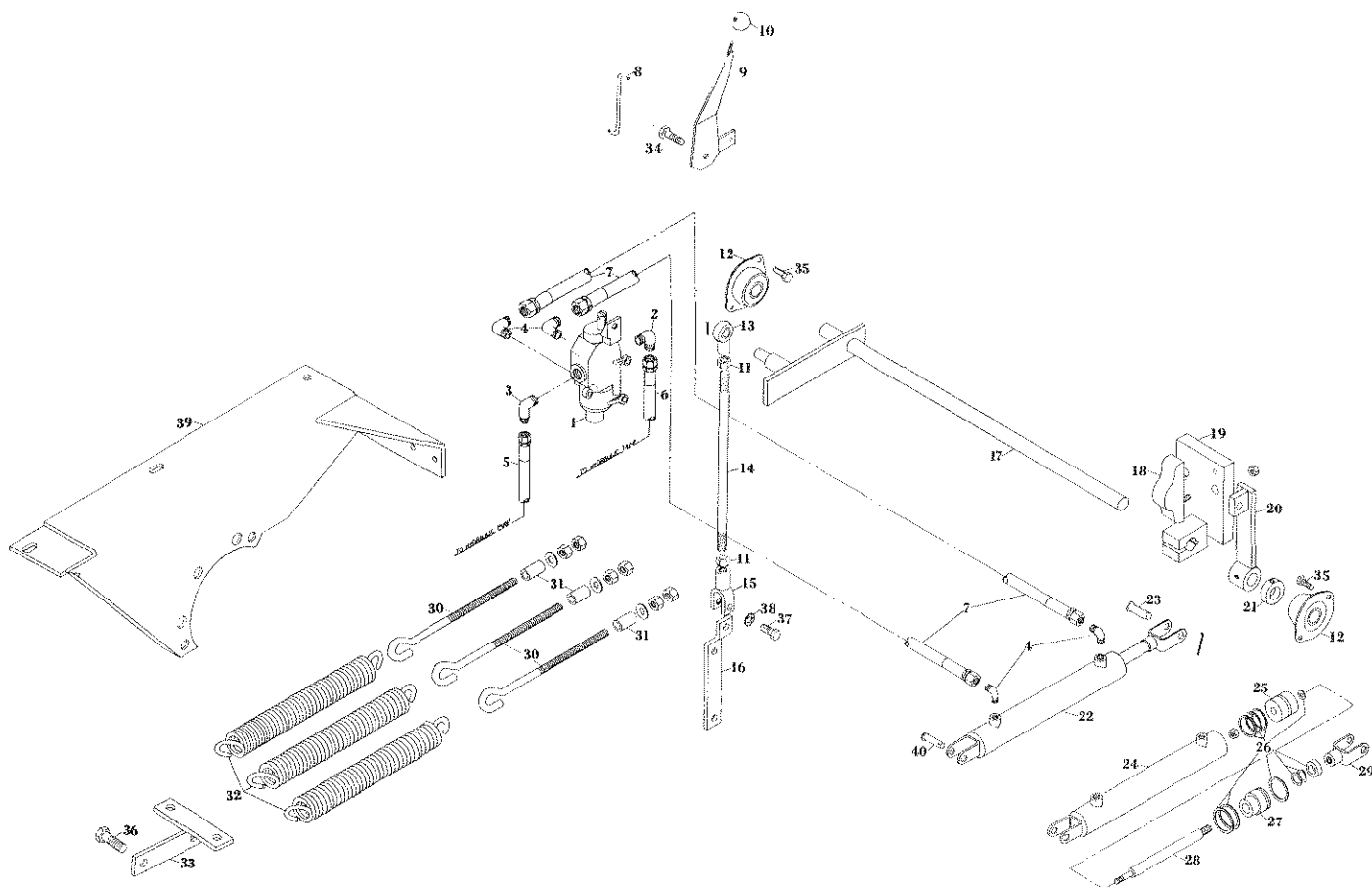
REF. NO.	PART NO.	DESCRIPTION
1	F 6235	Hydrostatic motor
2	F 6236	5/8" x 90° "O" ring tube fitting, 7515 x 10 WH
3	F 3102	1" straight male tube fitting, 8205 x 16 WH
4	F 6660	Drain line, rear, 5/8" x .049" steel tube
5	F 6661	L.H. high pressure line, rear, 1" x .109" steel tube
6	F 6662	R.H. high pressure line, rear, 1" x .109" steel tube
7	F 6240	1" straight tube union, 8305 x 16 WH
8	F 6241	5/8" straight tube union, 8305 x 10 WH
9	F 6663	L.H. high pressure line, center, 1" x .109" steel tube, 3-tie
	F 6664	L.H. high pressure line, center, 1" x .109" steel tube, 2-tie
10	F 6665	Drain line, center, 5/8" x .049" steel tube, 3-tie
	F 6666	Drain line, center, 5/8" x .049" steel tube, 2-tie
11	F 6620	Drain line, front, 5/8" x .049" steel tube, 3-tie
	F 6244	Drain line, front, 5/8" x .049" steel tube, 2-tie
12	F 6618	L.H. high pressure line, front, 1" x .109" steel tube, 3-tie
	F 6245	L.H. high pressure line, front, 1" x .109" steel tube, 2-tie
13	F 3104	1" x 90° male tube fitting, 8405 x 16 WH
14	F 6667	R.H. high pressure line, center, 1" x .109" steel tube
15	F 6668	R.H. high pressure line, front, 1" x .109" steel tube
16	F 6669	Suction line, 1" x .049" steel tube
17	F 6670	Hydraulic tank
18	F 6613	Hydraulic tank mounting bracket, L.H., 2-tie
19	F 6614	Hydraulic tank mounting bracket, R.H., 2-tie
20		1/2" close nipple
21	F 6671	5/8" JIC male connector, C5205 x 10
22		1/2" tee, heavy
23	F 6673	1/2" JIC 90° male elbow, C5405 x 6 x 8
24	F 6659	1/4" Hydraulic hose, 100"
25		1" NPT close nipple
26		1" NPT elbow
27	F 6674	1" ball valve, Red & White
28		1" x 4" NPT nipple
29	F 6258	Hydraulic tank access cover gasket
30	F 6259	Hydraulic tank access cover
31	F 6251	Oil filter mounting bracket
32	F 6261	Oil filter complete
	F 6453	Filter element only for F 6261 oil filter
33		1" x 1-1/4" NPT reducer bushing
34	F 6675	3/4" JIC male connector, C5205 x 12 x 16
35	F 6676	3/4" hydraulic hose, 27"
36		1/2" NPT street ell
37	F 6677	Tube clamp bracket, rear
38		1/4" x 2-3/4" N.C. cap screw
39	F 6269	4-bolt flange w/bolts & "O" rings, W43 x 16 x 16 Anchor
	F 6450	"O" ring only for F 6269 4-bolt flange
40	F 6672	Hydraulic pump
41	F 6678	3/4" JIC 45° "O" ring elbow, C5365 x 12 x 10
42	F 6679	5/8" JIC "O" ring branch tee, C5715 x 10
43	F 6680	1/2" hydraulic hose, 91"
44	F 6681	1/2" hydraulic hose, 85"
45	F 6682	5/8" JIC 90° male elbow, C5404 x 10 x 12



### HYDROSTATIC DRIVE SYSTEM — Cont.

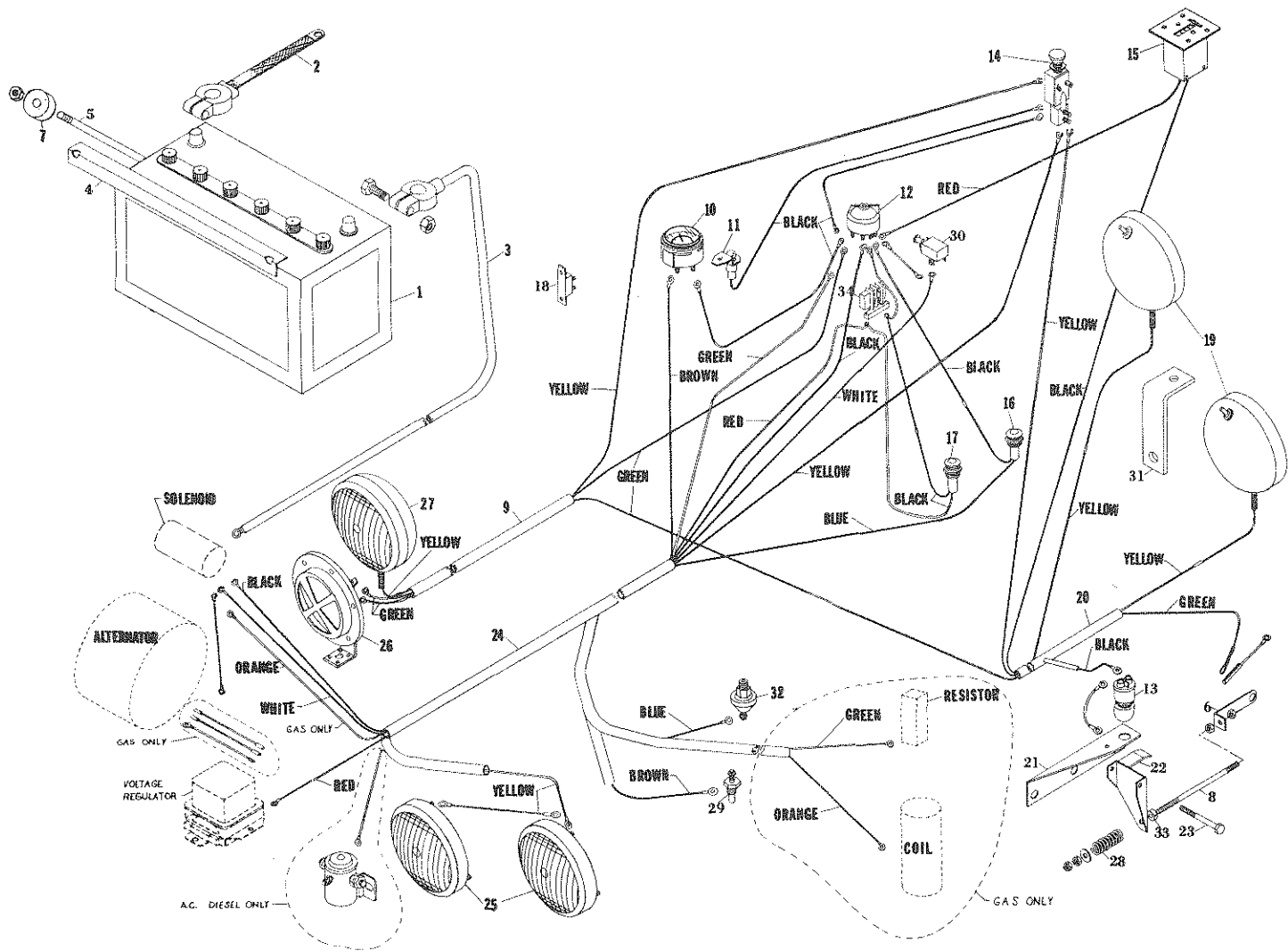
REF. NO.	PART NO.	DESCRIPTION
46	F 6263	Heat exchanger
47	F 6341	Shaft coupling, 21 involute
48	F 6629	5/8" tube clamp
49	F 6658	Main line support bracket
50	F 6628	Single 1" tube clamp
51	F 6683	Tube clamp bracket
52	F 6580	Nylon tie strap
53	F 6657	Check valve, 500-5 Bruning
54	F 6684	1/4" JIC "O" ring connector, C5315 x 4, restricted
55	F 6685	1/2" hydraulic hose, 21"
56	F 6686	3/4" plastic plug
57	F 6687	1/4" hydraulic hose, 105"
58	F 6762	"O" ring, 01-048





### PICK UP LIFT

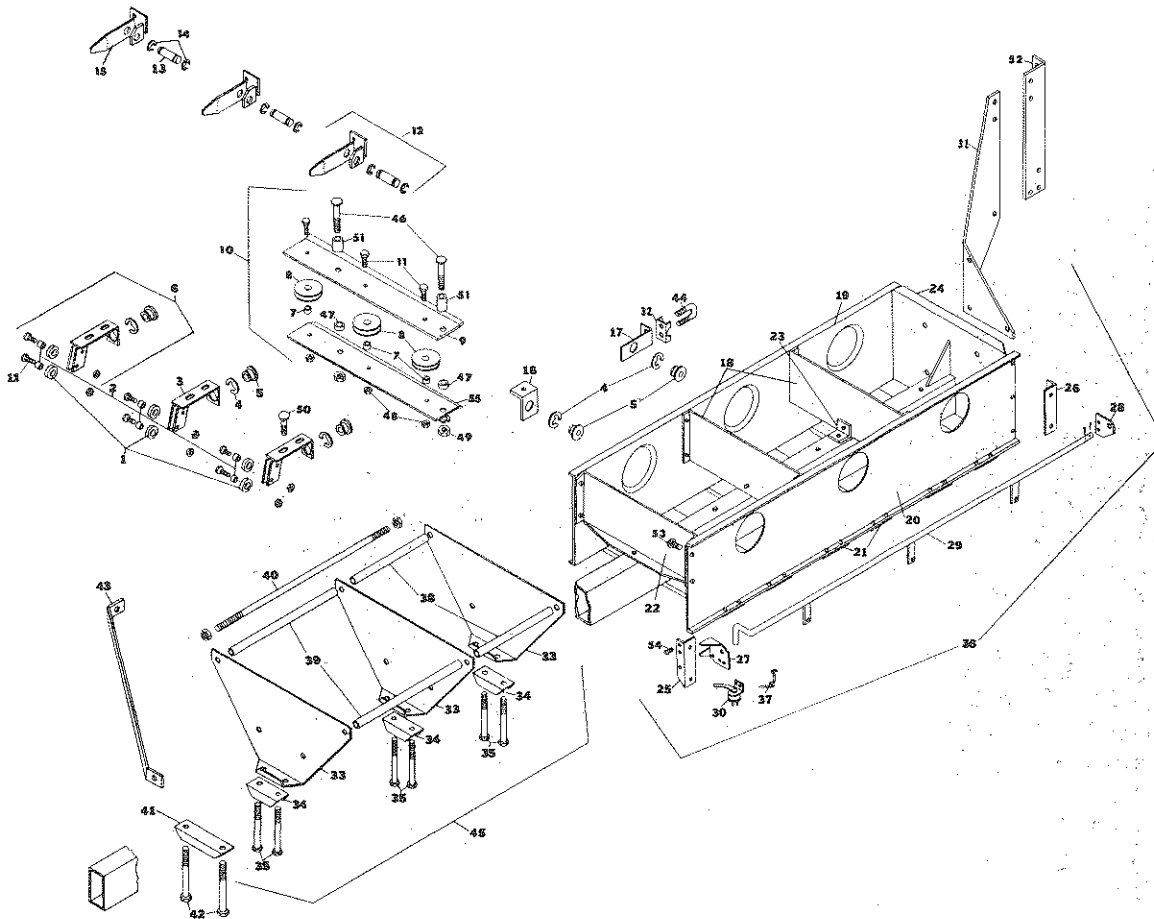
REF. NO.	PART NO.	DESCRIPTION	REF. NO.	PART NO.	DESCRIPTION
1	F 6838	Hydraulic Control Valve, DV - 024	21		1" set collar
2	F 6635	3/8" JIC 90° male elbow, C5405 x 6 x 6	22	F 6724	Hydraulic cylinder for pickup, WFC1500-6
3	F 6719	1/4" JIC 90° male elbow, 822 x 4 x 6	23	F 5049	1/2" x 1-3/4" clevis pin
4	F 6638	3/8" JIC 90° male elbow, C5405 x 6	24	F 6725	Tube assembly only
5	F 6687	1/4" hydraulic hose, w/JIC female fittings, 105"	25	F 6726	Piston
6	F 6659	1/4" hydraulic hose, w/JIC female fittings, 100"	26	F 6727	Ring kit for F 6724 cylinder
7	F 6720	1/4" hydraulic hose, w/ JIC female fittings, 41"	27	F 6728	Cylinder head
8	F 6451	Link rod	28	F 6729	Piston rod
9	F 6018	Hydraulic pickup control lever	29	F 6730	Clevis
10	F 5554	Knob for control lever	30	F 96	Eyebolt for pickup balance spring, 3 used
11		1/2" N.F. Nut	31	F 6410	Spacer bushing, 3 used
12	F 6723	Flange bearing, FAH 16 G Triangle, 2 used	32	F 7154	Spring for pickup balance, 3 used
13	F 6222	Ball rod end, 1/2"	33	F 6712	Anchor plate pickup spring
14	F 6706	Pickup lift rod	34		5/16" x 1- 1/4" N.C. cap screw
15	F 6707	Clevis, pickup lift	35		1/4" x 3/4" N.C. cap screw, 4 used
16	F 7194	Pickup lift bracket	36		7/16" x 1-1/2" N.F. cap screw
17	F 6708	Pickup lift shaft, 200	37		3/8" x 3/4" N.C. cap screw
	F 6709	Pickup lift shaft, 330	38		3/8" star lock nut
18	F 8264	Rubber bumper	39	F 6832	Feeder house support, R.H
19	F 6710	Pickup lift shaft lever	40		1/2" x 1-1/4" clevis pin
20	F 6711	Pickup lift cylinder lever			



**ELECTRICAL SYSTEM**

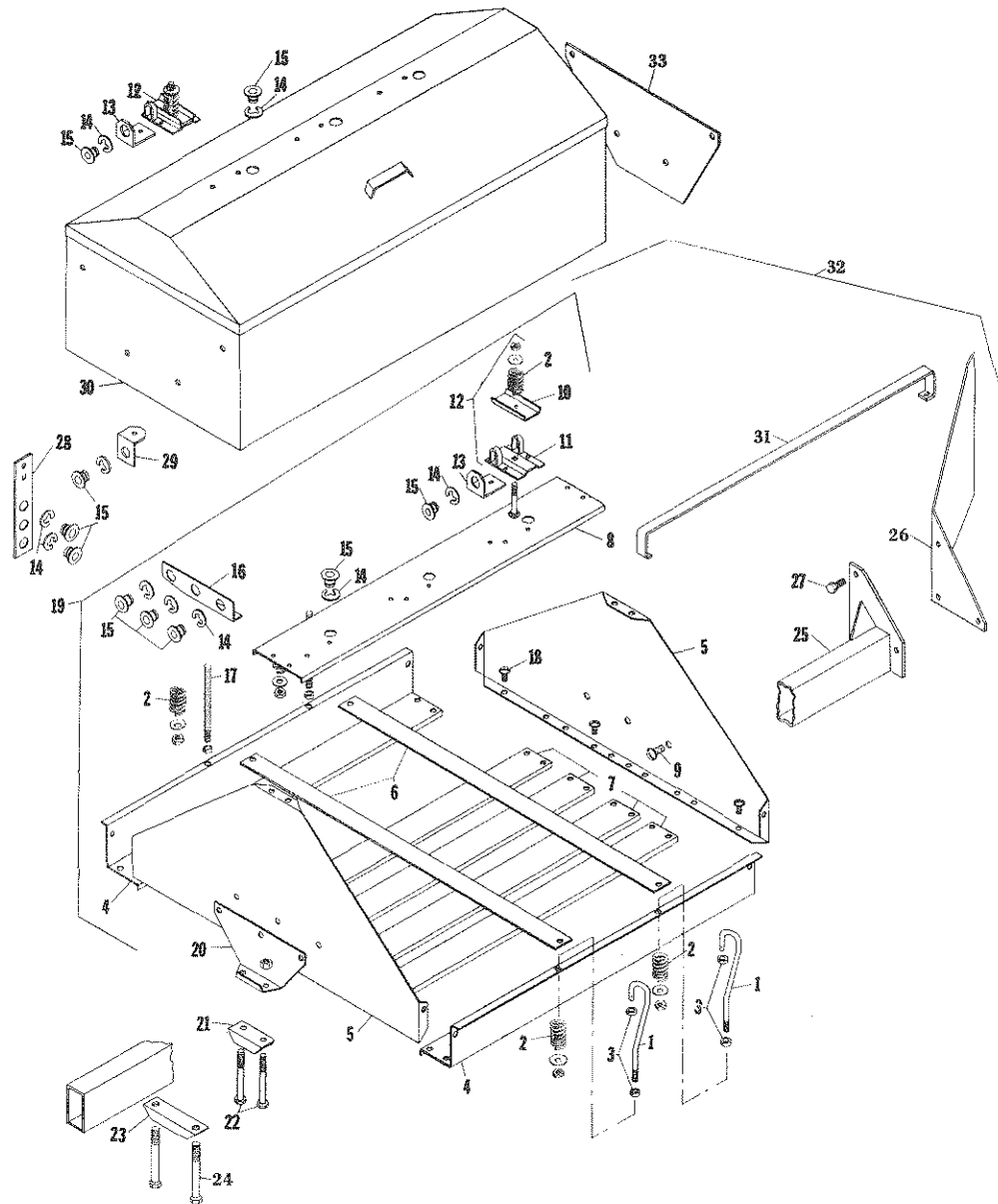
REF. NO.	PART NO.	DESCRIPTION
1	F 6639	Battery, 12 volt, 1 used gas, 2 used diesel
2	F 6548	Ground strap, 70622, 1 used gas, 2 used diesel
3	F 6549	Battery cable, insulated, 71931, IHC
	F 6625	Battery cable, insulated, A.C., Ford
4	F 6626	Battery hold down, IHC
	F 6627	Battery hold down, A.C., Ford
5	F 6551	Battery hold down bolt, 2 used
6	F 6552	Bale counter switch rod link
7	F 6328	Battery hold down grommet
8	F 6553	Bale counter switch rod
9	F 6420	Wire harness, horn & light
10	F 6421	Temperature gauge
11	F 5234	Instrument panel light socket
12	F 6422	Starter switch
13	F 5237	Sending unit for bale counter
	F 5236	Rubber cap
14	F 862	Light switch
15	F 5954	Bale counter, electronic
16	F 6424	Oil indicator light
17	F 6424	Amp indicator light
18	F 6843	Circuit breaker, 3005-30CH
19	F 8060	Light, rear combination, 12 volt sealed beam

REF. NO.	PART NO.	DESCRIPTION
	F 5941	Sealed beam unit, 12 volt, comb. Red and Clear
20	F 6426	Wire harness, bale counter, wire alarm light
21	F 6554	Bracket for sending unit
22	F 6555	Sending unit lever
23		1/4" x 3" NC cap screw
24	F 6808	Wire harness, engine, IHC
	F 6809	Wire harness, engine, AC
	F 6810	Wire harness, Ford
25	F 6558	Headlights with housing, shock mounted
	F 6429	Sealed beam unit, 12 volt
26	F 1497	Horn, wire alarm, 12 volt
27	F 8059	Light, front, 12 volt, sealed beam
	F 5842	Sealed beam unit, 12 volt
28	F 7541	Spring
29	F 6431	Temperature sending unit
30	F 6371	Safety switch
31	F 6577	Light bracket, right rear
32	F 6460	Oil sending unit
33		1/4" set collar
34	F 6578	Resistor and terminal block, 10W-15 Ohm



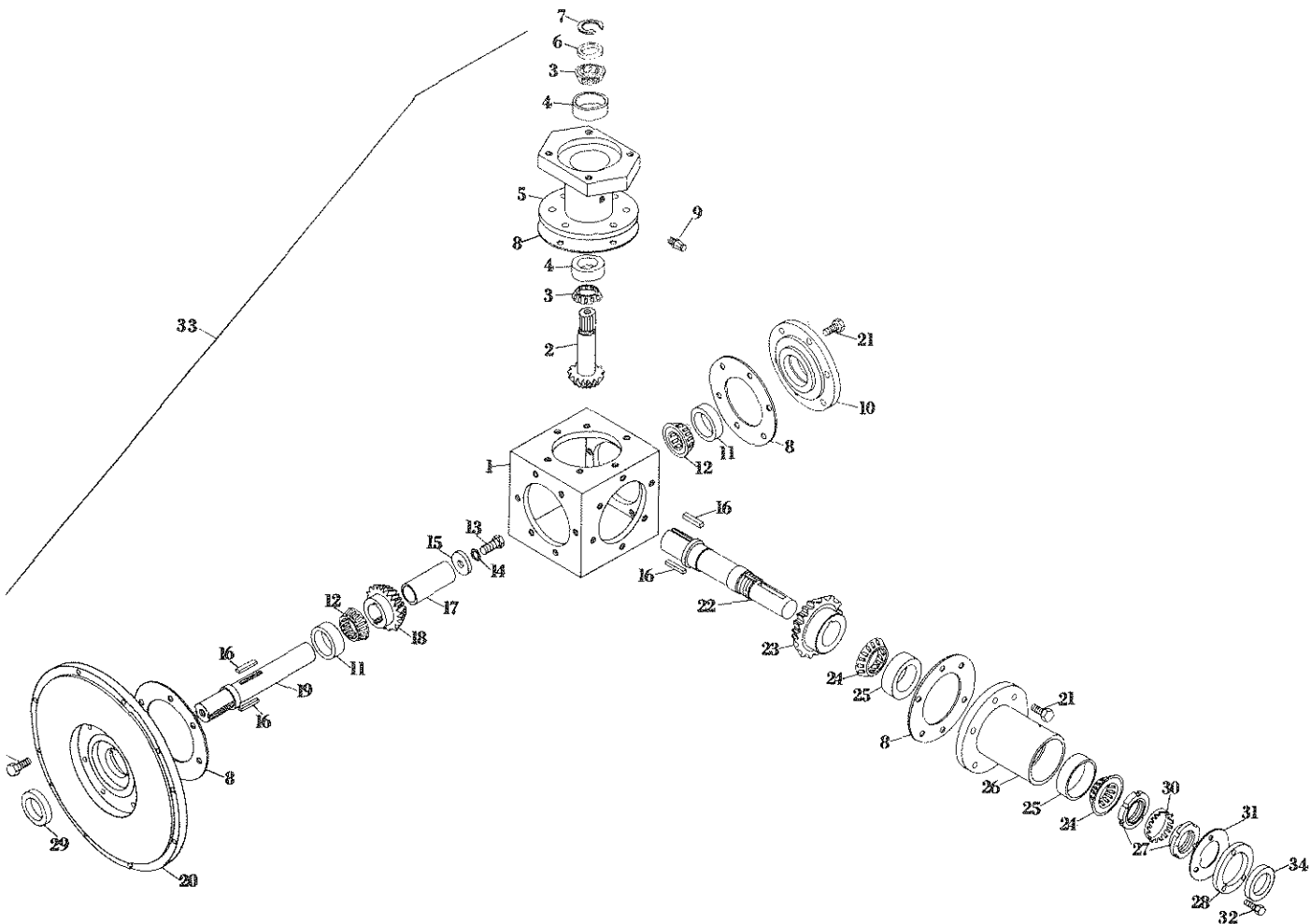
### WIRE BOX AND WIRE GUIDE

REF. NO.	PART NO.	DESCRIPTION	REF. NO.	PART NO.	DESCRIPTION
1	F 4014	Roller for wire guide and needle	29	F 7608	Rod for wire alarm, 3-tie
2	F 4015	Bushing for F 4014 Roller		F 7716	Rod for wire alarm, 2-tie
3	F 4222	Wire guide frame only, lower rear	30	F 946	Switch only for wire alarm
4	F 857	Snap ring for F 856 bushing	31	F 6589	Wire box mounting bracket, R.H.
5	F 856	Wire guide bushing	32	F 6322	Tube clamp
6	F 4205	Wire guide complete, lower rear	33	F 6317	Wire carrier end plate
7	F 4068	Bushing for F 4067 roller	34	F 6318	Wire carrier clamp
8	F 4067	Roller, lower front wire guide	35		3/8" x 5" N.C. cap screw
9	F 8173	Wire guide frame only, top bracket, 3-tie	36	F 7515	6 compartment wire box complete w/braces and harness
	F 8297	Wire guide, top bracket, 2-tie		F 7717	4 compartment wire box complete w/braces and harness
10	F 8174	Wire guide, complete, lower front, 3-tie			
	F 8298	Wire guide complete, lower front, 2-tie	37	F 4210	Spring for wire alarm rod
11		Bolt with lock nut 1/4" x 1" N.C.C.S.	38	F 7231	Pipe spacer, wire carrier, short
12	F 4203	Upper wire guide complete with pin	39	F 7232	Pipe spacer, wire carrier, long
13	F 4204	Upper wire guide wear pin	40	F 4206	Stay bolt, wire carrier, 2-tie
14	F 5159	Snap ring for wear pin		F 7230	Stay bolt, wire carrier, 3-tie
15	F 4225	Upper wire guide bracket only	41	F 6319	Wire box clamp
16	F 4163	Wire guide bracket, rear	42		1/2" x 5-1/2" N.C. cap screw
17	F 6314	Wire guide bracket	43	F 6320	Brace for L.H. wire box mount
18	F 7637	Wire box divider	44	F 6321	Tube clamp "U" bolt
19	F 7638	Wire box side, front, 3-tie	45	F 4228	Wire carrier complete, 3-tie
	F 7981	Wire box side, front, 2-tie		F 4229	Wire Carrier complete, 2-tie
20	F 7639	Wire box side, rear, 3-tie	46		3/8" x 1-3/4" N.C. Carriage bolt, 2 used
	F 7982	Wire box side, rear, 2-tie	47	F 8176	Spacer, 13/32"
21	F 7640	Wire box bottom slats	48		1/4" N.C. fiber lock nut
22	F 7641	Wire box end, left	49		3/8" N.C. fiber lock nut
23	F 7642	Wire box divider angle	50		3/8" x 1-1/2" N.C. Carriage bolt
24	F 7643	Wire box base with end plate	51	F 8175	Spacer, 1-1/4"
25	F 7644	Angle for wire alarm mounting bracket, L.H.	52	F 6731	Wire box bracket, R.H.
26	F 7645	Angle for wire alarm mounting bracket, R.H.	53		5/16" x 3/4" Machine screw
27	F 4191	Mounting bracket for wire alarm rod, L.H.	54		1/4" x 1/2" Machine screw
28	F 4190	Mounting bracket for wire alarm rod, R.H.	55	F 8311	Wire guide, bottom bracket, 3-tie
				F 8308	Wire guide, bottom bracket, 2-tie



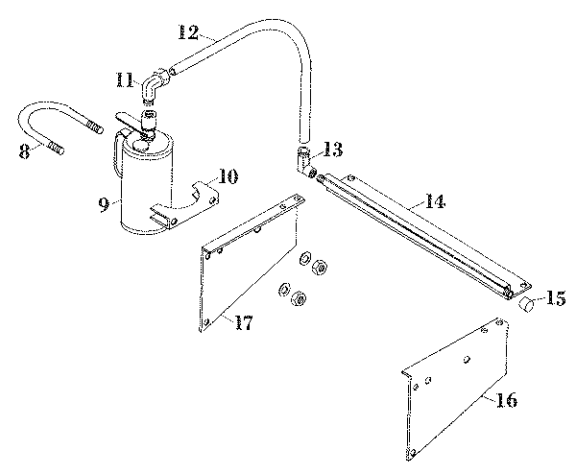
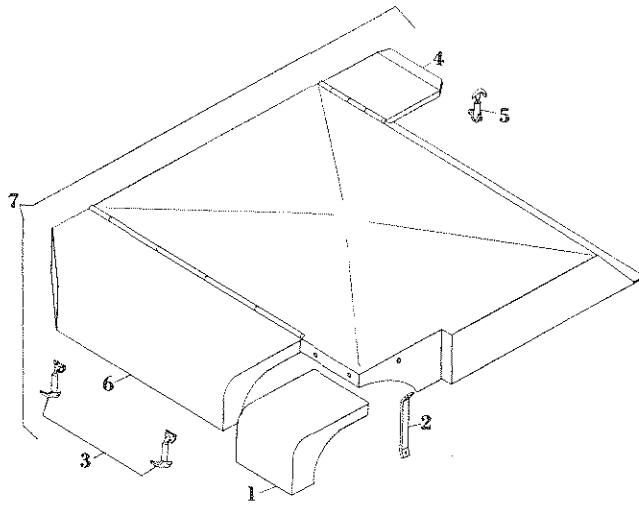
### TWINE BOX AND TWINE GUIDES

REF. NO.	PART NO.	DESCRIPTION	REF. NO.	PART NO.	DESCRIPTION
1	F 7927	Twine box hold down rod	20	F 7937	Twine box bracket
2	F 7541	Spring, twine box hold down	21	F 6318	Twine box clamp
3	F 7928	Set collar, 5/16"	22		3/8" x 5" N.C. cap screw
4	F 7929	Twine box side	23	F 6319	Twine box base tube clamp, L.H.
5	F 7930	Twine box end	24		1/2" x 5-1/2" N.C. cap screw
6	F 7931	Twine box hold down	25	F 7938	Twine box base tube with end mount
7	F 7932	Twine box bottom	26	F 6589	Twine box mounting bracket, R.H.
8	F 7933	Twine box top section	27		3/8" x 1" N.C. cap screw
9		3/8" x 3/4" button head cap screw	28	F 524	Holder for twine guide bushing, 2-tie
10	F 7890	Twine tension top		F 525	Holder for twine guide bushing, 3-tie
11	F 7889	Twine tension base	29	F 7973	Holder for needle twine guide bushing
12	F 7891	Twine tension assembly	30	F 7974	Twine box, 8 compartment, dome lid, 2-tie
13	F 7898	Twine guide bushing holder		F 8064	Twine box, 6 compartment, dome lid, 3-tie
14	F 857	Snap ring for F 856	31	F 8279	Guard, twine tension
15	F 856	Twine guide bushing	32	F 7985	Twine box, 9 compartment, complete with base tube and mounting bracket
16	F 7934	Twine guide bracket	33	F 6317	Twine box bracket
17	F 7935	Twine box hold down bolt			
18		1/4" x 1/2" flat head machine screw			
19	F 7936	Twine box complete, 9 compartment large plastic twine ball, Ref. 1-18			



**DRIVE GEAR BOX**

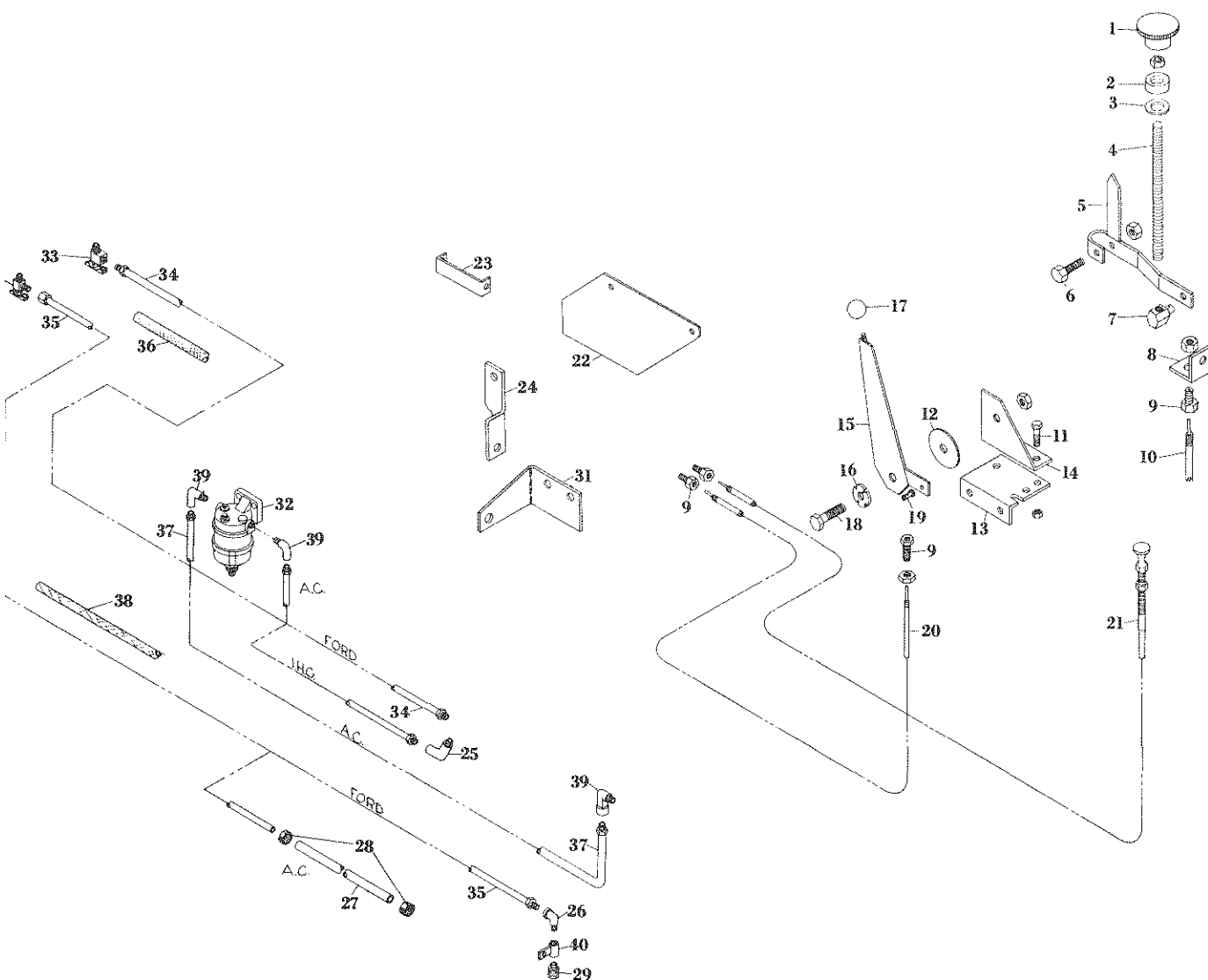
REF. NO.	PART NO.	DESCRIPTION	REF. NO.	PART NO.	DESCRIPTION
1	F 6528	Gear box main housing	17	F 6536	Gear and bearing spacer
2	F 6529	Pinion & shaft, pump drive	18	F 6530	Pinion, pulley drive
3	F 1083	Bearing cone, pump drive shaft	19	F 6531	Pinion and gear shaft,
4	F 1084	Bearing cup, pump drive shaft	20	F 6532	Gear box motor bell housing
5	F 6567	Gearbox pump drive housing	21	F 6532	1/2" x 1-1/4" N.C. cap screw
6	F 6339	Spacer, pump drive shaft	22	F 6533	Shaft, pulley drive
7	F 1087	Snap ring, pump drive shaft	23	F 6537	Gear, pulley drive
8	F 6407	Shim, gearbox housing, .005"	24	F 5446	Bearing cone
	F 6408	Shim, gearbox housing, .010"	25	F 5445	Bearing cup
	F 6409	Shim, gearbox housing, .015"	26	F 6569	Gear box pulley drive housing
9	F 1720	Vent, 1/8" p.t.	27	F 1245	Nut, bearing take-up
10	F 6568	Bearing end cap	28	F 6354	Seal holder
11	F 6534	Bearing cup, No.3420	29	F 6817	Seal, 19830 C/R
12	F 6535	Bearing cone, No.3490	30	F 1246	Lock washer
13		1/2" x 1-3/4" NF cap screw	31	F 6340	Gasket, seal holder
14		1/2" star lock washer	32		1/4" x 3/4" socket head cap screw
15	F 6360	Bearing washer, 2 used	33	F 6484	Gear Box complete
16		3/8" x 3/8" square key, 2", 2 used	34	F 6355	Seal, 17557 C/R



**PICKUP SHIELD, BULL GEAR LUBER**

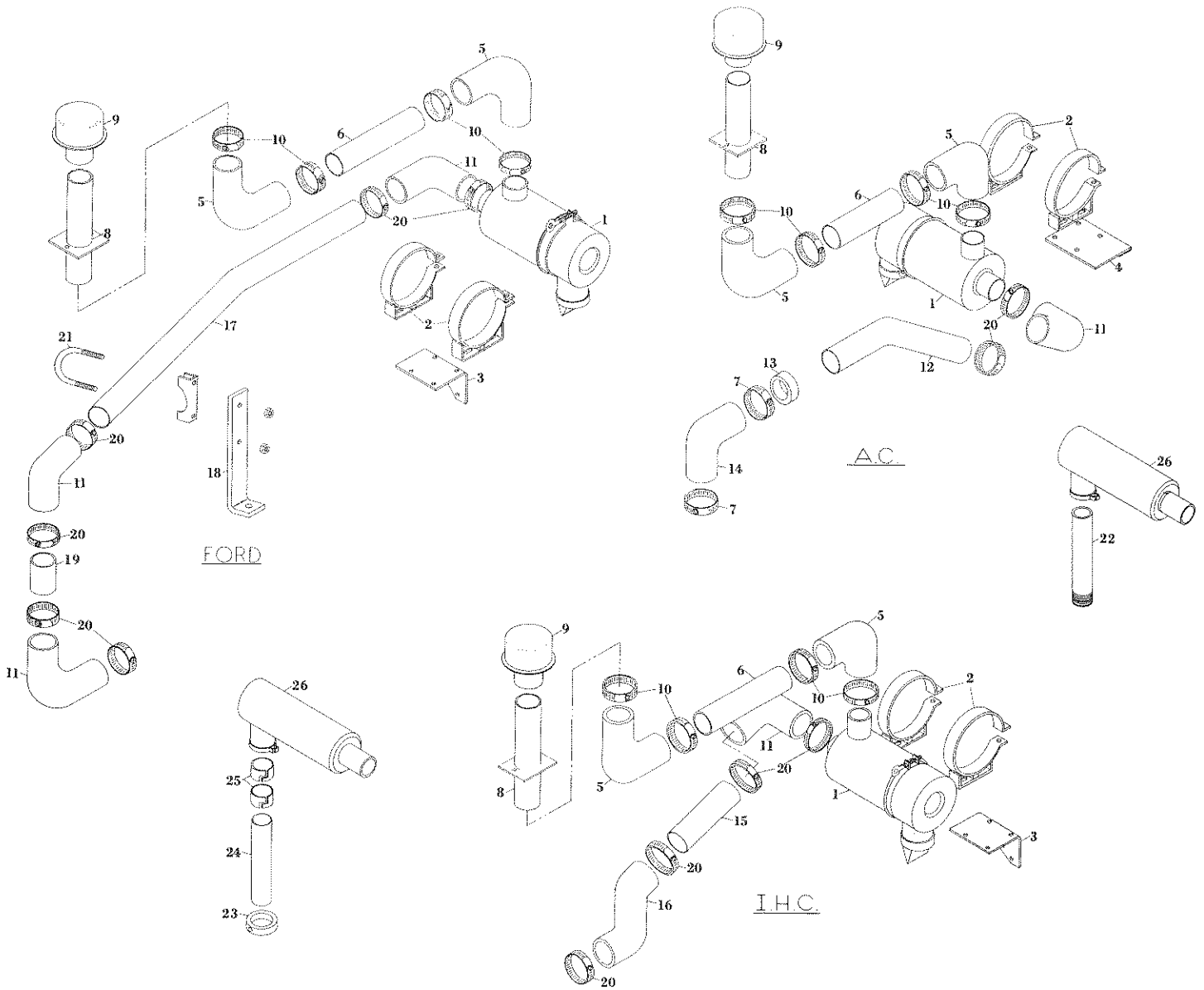
REF. NO.	PART NO.	DESCRIPTION
1	F 6104	Front section of pickup shield (not hinged)
2	F 6105	Mounting bracket for shield left side
3	F 7166	Catch for access door
4	F 7635	Tool box lid
5	F 853	Catch for tool box cover
6	F 6111	Access door for F 5971 shield
7	F 5971	Shield over pickup complete
8	F 7721	"U" bolt, grease can
9	F 7671	Oil can with pump
	F 7729	Spring for pump

REF. NO.	PART NO.	DESCRIPTION
10	F 7722	Grease can clamp base
11	F 7676	90° nylon elbow
12	F 6542	Nylon tubing
13	F 7677	90° brass elbow
14	F 6543	Bull gear luber, 2-tie
	F 6544	Bull gear luber, 3-tie
15		1/4" pipe cap
16	F 6545	Full gear shield, L.H.
17	F 6546	Bull gear shield, R.H.



### THROTTLE CONTROL, TENSION CONTROL, AND FUEL LINE

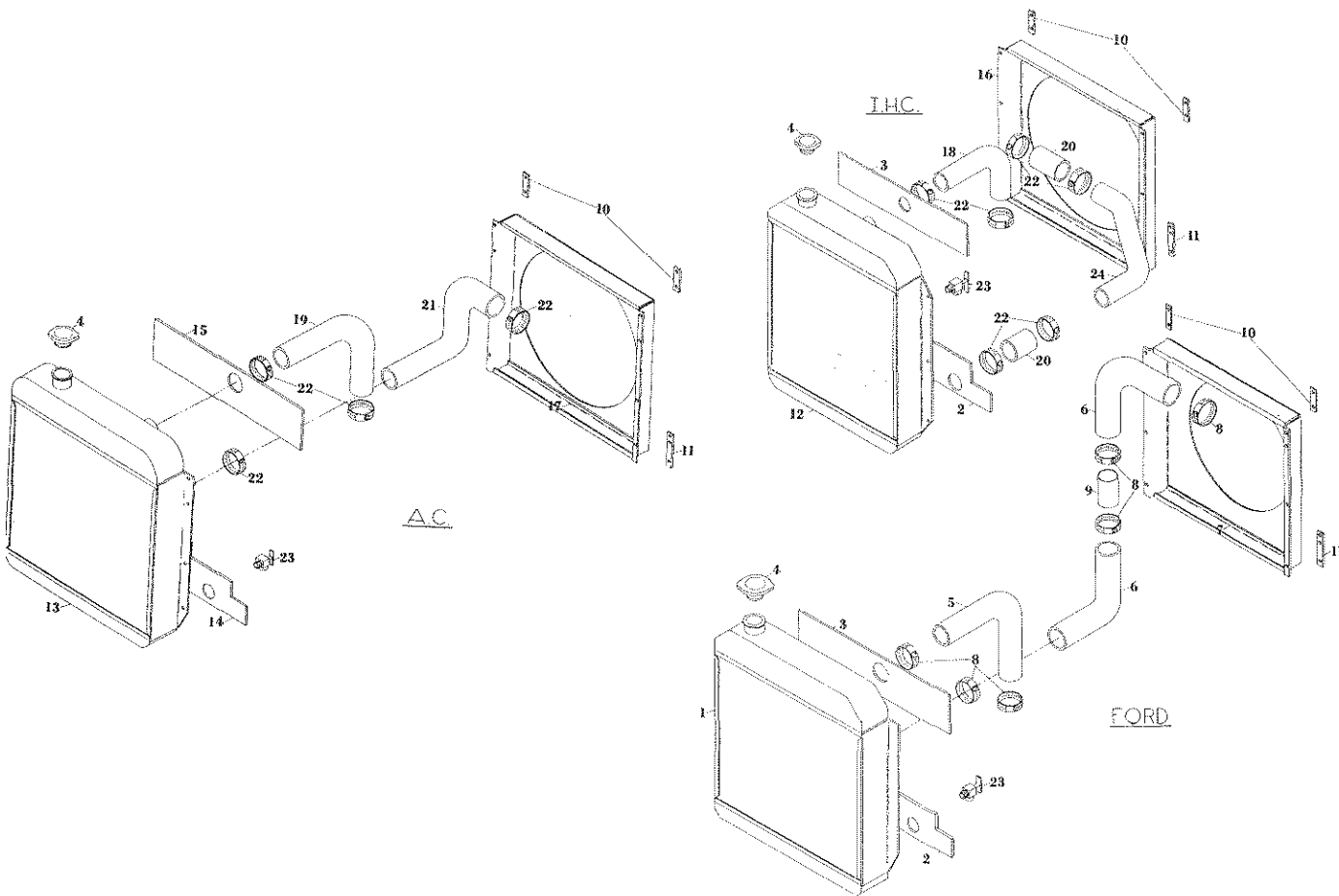
REF. NO.	PART NO.	DESCRIPTION	REF. NO.	PART NO.	DESCRIPTION
1	F 1007	Control knob	22	F 5069	Engine choke assembly, IHC
2	F 1131	Thrust bearing	23	F 6583	Throttle cable anchor, IHC
3		3/8" flat washer	24	F 6834	Throttle wire connector, IHC
4	F 6042	Adjusting rod	25	F 6839	3/8" x 1/8" x 45° male elbow, 352 x 6 x 2 WH
5	F 6041	Tension control indicator	26	F 6840	Tube elbow, 89LB, 5/16" x 1/8" Imperial
6		5/16" x 2" N.C. cap screw	27	F 6841	1/4" rubber tube, 12"
7	F 1005	Adjusting stud nut	28	F 8301	1/4" hose clamp, GS-4 Murray
8	F 6050	Anchor angle for tension control conduit	29	F 5232	1/4" x 1/8" straight fitting, 268P
9	F 5559	Beach nut w/nut and washer	30	F 6648	5/16" shut-off valve, 6703WH
10	F 6048	Tension control conduit, 91"	31	F 6833	Throttle bracket, A.C.
	F 6049	Tension control wire, 96"	32	F 6640	Water separator, 18151 HMS
		5/16" x 3/4" N.C. cap screw	33	F 6649	3/8" shut-off valve, A6890 WH
11			34	F 6644	3/8" line, tank valve to primer, IHC
12	F 1003	Friction disc		F 6846	3/8" line, tank valve to primer, AC
13	F 6035	Base bracket for throttle lever		F 6847	3/8" line, tank valve to primer, Ford
14	F 6036	Top bracket for throttle lever	35	F 6646	5/16" return line, AC
15	F 6034	Throttle lever		F 6848	5/16" return line, Ford
16	F 5551	Conical washer	36	F 6651	3/8" fuel line cover, 100"
17	F 5554	Knob for throttle lever		F 6652	3/8" fuel line cover, 49"
18		5/16" x 1" N.C. cap screw	37	F 6645	3/8" line, water separator to filter, 49", A.C.
19	F 5545	Swivel Fastener	38	F 6650	5/16" fuel line cover, 137"
20	F 6442	Throttle control conduit, 124", IHC & Ford	39	F 6642	Tube elbow, 89 LB, 3/8" x 1/4" Imperial
	F 6844	Throttle control conduit, 135", AC	40	F 6842	Return line mounting coupling, Ford
	F 6443	Throttle control wire, 134", IHC & Ford			
	F 6845	Throttle control wire, 145", AC			
21	F 5069	Engine shut off control assembly, Ford			



**AIR CLEANER & EXHAUST**

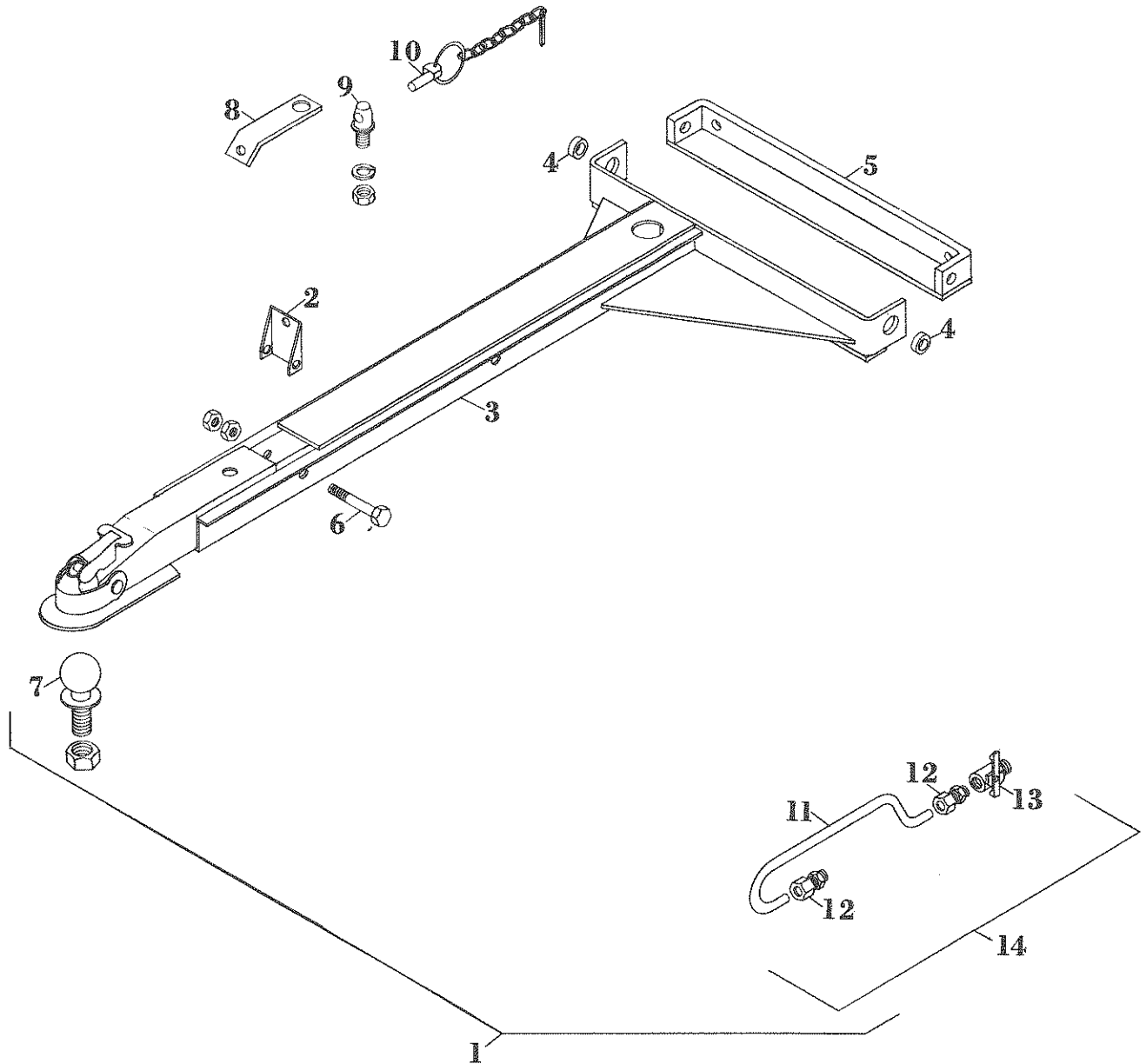
REF. NO.	PART NO.	DESCRIPTION	REF. NO.	PART NO.	DESCRIPTION
1	F 6306	Air cleaner complete, FWG06-5012	14	F 6795	Rubber elbow, 3", AC
	F 6452	Filter element for F 6306 air cleaner	15	F 6522	Air intake pipe, IHC, 10" x 2-1/4"
2	F 6802	Air cleaner band, P 7191	16	F 6523	Rubber elbow, IHC, 304597R1
3	F 6655	Air cleaner bracket, Ford, IHC	17	F 6797	Air cleaner pipe, Ford
4	F 6540	Air cleaner bracket, AC	18	F 6798	Air cleaner tube bracket, Ford
5	F 6310	Rubber elbow, 2-1/2", 90 HL25	19	F 6799	Air cleaner pipe, 2-1/4" x 2-1/2" long, Ford
6	F 6792	Air intake pipe, 6"	20	F 6308	Air cleaner hose clamp, 4-4559
7	F 6793	Air cleaner hose clamp, 4-1205	21	F 6804	Air cleaner tube clamp, 35-413 SM
8	F 6794	Air intake pipe	22	F 6312	Exhaust pipe, IHC, AC, 17"
9	F 6803	Breather cap	23	F 6805	2-1/2" set collar, Ford
10	F 6560	Air cleaner hose clamp, 4-4560	24	F 6800	Exhaust pipe, Ford, 2" x 12"
11	F 6521	Rubber elbow, 2-1/4", P10-5530	25	F 6801	Exhaust pipe reducer
12	F 6524	Intake elbow, AC	26	F 1706	Muffler
13	F 6796	Rubber bushing, 2-1/4" to 3", P10-4090			





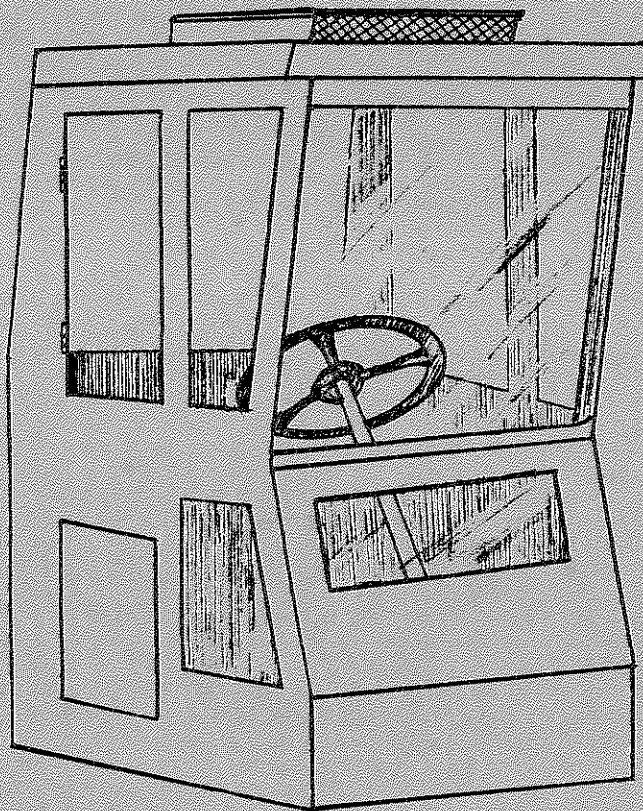
**RADIATORS AND SHROUD**

REF. NO.	PART NO.	DESCRIPTION	REF. NO.	PART NO.	DESCRIPTION
1	F 6791	Radiator, Ford	13	F 6823	Radiator, AC
2	F 6813	Air baffle bottom, IHC, Ford	14	F 6815	Air baffle, bottom, AC
3	F 6814	Air baffle, top, IHC, Ford	15	F 6816	Air baffle, top, AC
4	F 6821	Radiator cap	16	F 6601	Radiator shroud, IHC
5	F 6819	Radiator hose, upper, Ford, FM21	17	F 6824	Radiator shroud, AC
6	F 6820	Radiator hose, lower, Ford	18	F 6602	Radiator hose, upper, IHC
7	F 6818	Radiator shroud, Ford	19	F 6825	Radiator hose, upper, AC, FM21
8	F 6831	Radiator hose clamp, No. 32	20	F 6826	Radiator hose, lower, IHC
9	F 6822	Radiator hose coupling, Ford	21	F 6827	Radiator hose, lower, AC, FM59
10	F 6812	Radiator baffle bracket, top	22	F 6830	Radiator hose clamp, No. 36
11	F 6811	Radiator baffle bracket, bottom	23	F 6828	1/4" Angle Bib drain, 120 WH
12	F 6600	Radiator, IHC	24	F 6829	Radiator return tube, IHC, 305197R1



### TOW BAR

REF. NO.	PART NO.	DESCRIPTION
1	F 6598	Tow bar complete
2	F 6590	Tow bar latch
3	F 6591	Tow bar
4	F 6592	Bushing, two used
5	F 6593	Tow bar bracket
6		9/16" x 3-1/4" N.C. cap screw
7	F 6594	Hitch ball, 2", 3/4" shank
8	F 6588	Tow bar anchor strap
9	F 6595	Anchor strap pin
10	F 6596	Snap pin
11	F 6512	Steering cylinder bypass tube
12	F 6513	Tube fitting, 7205 x 4 x 4 WH
13	F 6514	Shutoff valve, 6825 WH
14	F 6515	Steering cylinder bypass assembly for towing



### EXCEL CAB

PART NO.	DESCRIPTION
F 6135	Glass, 1/4" tinted safety, top front
F 6136	Glass, 1/4" tinted safety, rear
F 6137	Glass, 1/4" tinted safety, bottom front
F 6138	Glass, 1/4" tinted safety, right and left top front
F 6139	Glass, 1/4" tinted safety, right rear
F 6140	Glass, 1/4" tinted safety, bottom right front
F 6141	Glass, 1/4" tinted safety, door
F 6142	Rubber moulding for setting glass (sold by the foot)
F 6143	Window adjusting arm
F 6144	Door handle, inside
F 6145	Door handle, outside
F 6146	Door latch w/handles
F 6148	Air deflector
F 6150	Floor mat
F 6394	Dome light
F 6395	Blower switch
F 6153	Rear view mirror
F 6396	Blower fan, 12 volt
F 6155	Door latch
F 6397	Blower filter
F 6398	Domelite switch

### PARTS NOT ILLUSTRATED

F 6597	Anchor plate, pickup spring
F 6600	Radiator for IHC engine
F 6601	Radiator shroud
F 6602	Radiator hose, upper
F 6603	Radiator hose, lower, gasoline

