

## **FREEMAN 1390 BALER PLUNGER ASSEMBLIES**

---

# SAFETY SUMMARY

## GENERAL SAFETY NOTICES

The following pages contain general safety warnings which supplement warnings and cautions appearing elsewhere in this manual. All electrical and hydraulic equipment is dangerous. You must thoroughly review and understand the Safety Summary before attempting to operate, troubleshoot or service this baler.

The following symbols/terms are used to emphasize safety precautions and notices in this manual:



Obey the following cautions and warnings before using your machine to avoid equipment damage, personal injury or death.

### **DANGER**

The "DANGER" symbol indicates a hazardous situation which, if not avoided, will result in death or serious injury. Carefully read the messages that follows to prevent serious injury or death.

### **WARNING**

The "WARNING" symbol appears wherever incorrect operating procedures or practices could cause death or serious injury. Carefully read the message that follows to prevent serious injury or death.

### **CAUTION**

The "CAUTION" symbol appears wherever a hazardous situation which, if not avoided, could result in minor to moderate injury and equipment damage.

### **NOTICE**

This signal word alerts to a situation that is not related to personal injury but may cause equipment damage.

NOTE:...

The term "NOTE" highlights operating procedures or practices that may improve equipment reliability and/or personnel performance.

NOTE: All possible safety hazards cannot be foreseen so as to be included in this manual. Therefore, you must always be alert to potential hazards that could endanger personnel and/or damage the equipment.

## SAFETY

Allied Systems Co. is concerned with safety. Freeman Equipment is furnished with safety features. Even with these safety features, personal injury can still occur if the operator is careless when operating or maintaining the machine. There are “CAUTION,” “DANGER,” and “BE CAREFUL” decals on the machine. Read and pay attention to the decals. Following is a list of precautions that should be taken to help prevent personal injury:

1. Keep all shields in place.
2. Shut off tractor engine before adjusting, lubricating, cleaning or servicing the baler.
3. Wait for all movement to stop before servicing baler.
4. Keep hands, feet, and clothing away from power driven parts.
5. Keep all shields installed and keep clear of the P.T.O. Drive line.
6. Keep all others off baler.
7. Use appropriate signs or warning lights when operating on highways.
8. Make certain everyone is clear of baler before engaging P.T.O.
9. Do not ride on any part of the baler while in operation.
10. Keep hands and feet clear of pickup.
11. Keep hands away from knotter when baler P.T.O. Drive is engaged.
12. Periodically check all nuts and bolts for tightness.
13. Always use lights for night work.
14. As a safety precaution it is recommended that an “abc” fire extinguisher be carried on the baler at all times. It is also recommended to carry a four gallon water container with pump, or as required by local and state law.
15. Avoid loose clothing which can easily be caught in moving parts.
16. Remember ‘safety’ is only a word until it is put into practice.

Be aware of the hazards of pressurized hydraulics:



- » Wear personal protective equipment, such as gloves and safety glasses, whenever servicing or checking a hydraulic system.
- » Assume that all hydraulic hoses and components are pressurized. Relieve all hydraulic pressure before disconnecting any hydraulic line.
- » Never try to stop or check for a hydraulic leak with any part of your body; use a piece of cardboard to check for hydraulic leaks.
- » Small hydraulic hose leaks are extremely dangerous, and can inject hydraulic oil under the skin, even through gloves.
- » Infection and gangrene are possible when hydraulic oil penetrates the skin. See a doctor immediately to prevent loss of limb or death.



**WARNING:** Some illustrations in this parts list show the baler without shields to allow for a better view of the area being addressed. The baler should never be operated with any of the safety shields removed.

---

# INTRODUCTION

## HOW TO USE THE MANUAL

This manual contains illustrations and parts lists of components and assemblies which make up the machine. Each page consists of the name of the assembly or component, a reference number, part number, part name and the quantities of the part used.

Assembly or component names help identify the illustration and parts list for each figure. This name also helps locate the general area of the machine where the assembly or component can be located.

Reference numbers shown in a column refers to the numbered parts in the illustration. This ties the part in the illustration to the part number and description in the parts list. Part numbers are used to identify individual parts or part assemblies

Part descriptions provide the name of the part, plus additional information such as dimensional specification and what parts are grouped together to form part assemblies, which helps you identify the parts.

Quantities listed for each illustration are only for that assembly or component and not the total used per machine.

Indent dots are used to indicate assemblies and sub-parts of assemblies. No dot indicates the major assembly. Part descriptions which are indented with dots are sub-parts of the major assembly shown above.

This parts manual is not intended to be a complete guide for machine service or repairs. Contact your dealer for any of your service or technical requirements.

## ORDERING PARTS

When ordering replacement parts, give the unit serial number, name of part and quantity required.

For further information on parts, service or ordering, consult your local dealer, or contact Allied Systems Company:

Allied Systems Company  
21433 SW Oregon Street  
Sherwood, OR 97140 USA

Phone: 503-625-2560  
Fax: 503-625-5132  
E-Mail: [parts@alliedsystems.com](mailto:parts@alliedsystems.com)

## UPDATING AND REORDERING MANUALS

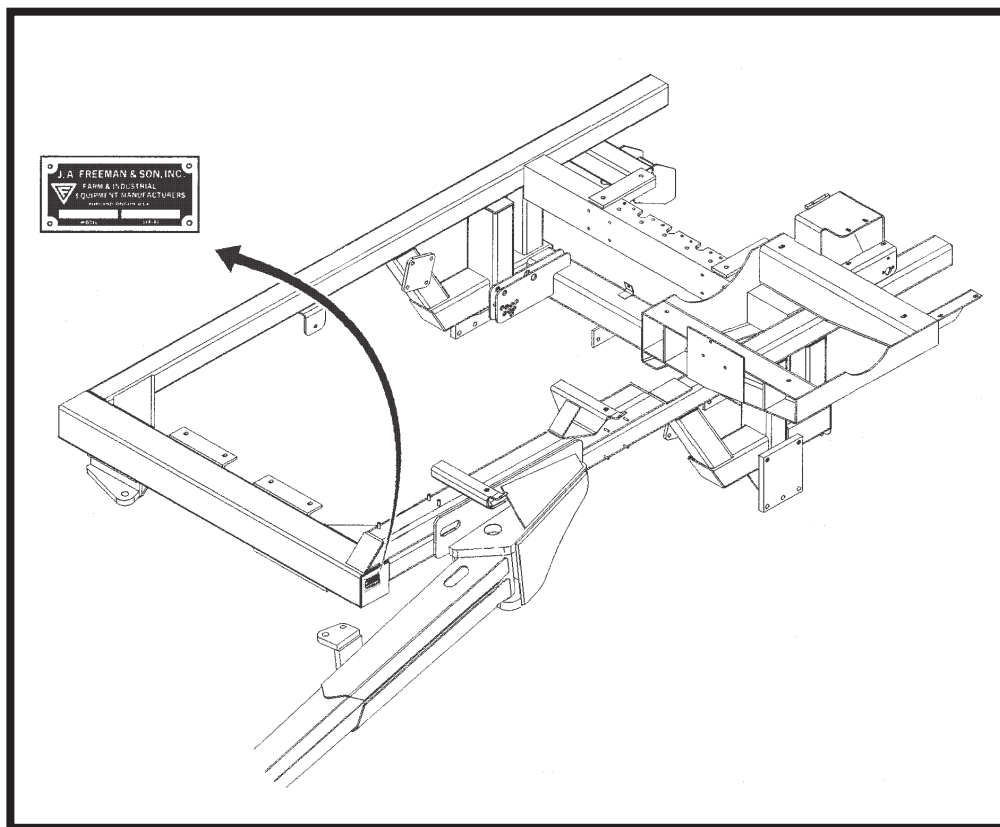
The parts lists, illustrations and specifications in this manual are based on the latest information available at the time of publication. Your machine may have product improvement and options not yet contained in this manual.

A copy of this manual is supplied with each machine. Additional copies are available through you dealer. When ordering additional manuals, use the reorder number listed on the front cover and the quantity needed.

## SERIAL NUMBER LOCATION AND IDENTIFICATION

The serial number is an important piece of information about the machine and it may be necessary to know it before obtaining the correct replacement part. The serial number is located on the right front tongue brace as shown.

Left and Right on the machine are understood to mean from a position facing in the direction of travel.



### **⚠ WARNING**

Some Illustrations In This Parts List Show The Baler Without Shields To Allow For A Better View Of The Area Being Addressed. The Baler Should Never Be Operated With Any Of The Safety Shields Removed.

NOTE: ILLUSTRATIONS ARE FOR "ORDERING" INFORMATION ONLY, AND ARE NOT INTENDED FOR USE AS AN ASSEMBLY GUIDE.

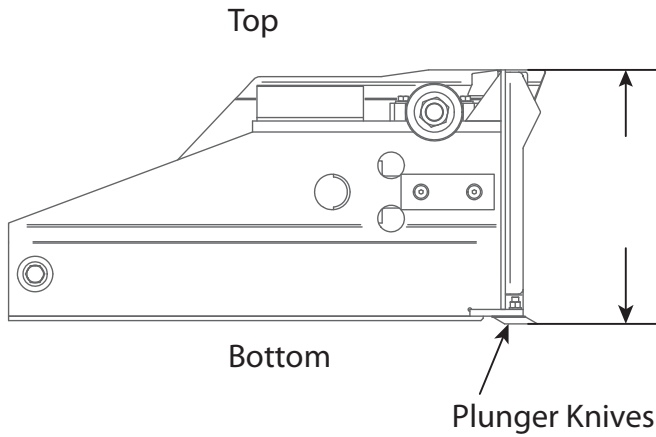
---

## WHAT PLUNGER DO I HAVE?

### **⚠ DANGER**

**DANGER:** Shut off tractor engine before adjusting, lubricating, cleaning or servicing the baler. Failure to do so could cause death or serious injury.

To determine the plunger you have, measure from the bottom of the plunger knives to the top of the plunger (see illustration below). Write the measurement in the table below along with the serial number of the baler. Compare the plunger you have with the plungers in this book and write the part number in the table.



Baler Serial Number	Plunger Measurement	Plunger Part #

## TABLE OF CONTENTS

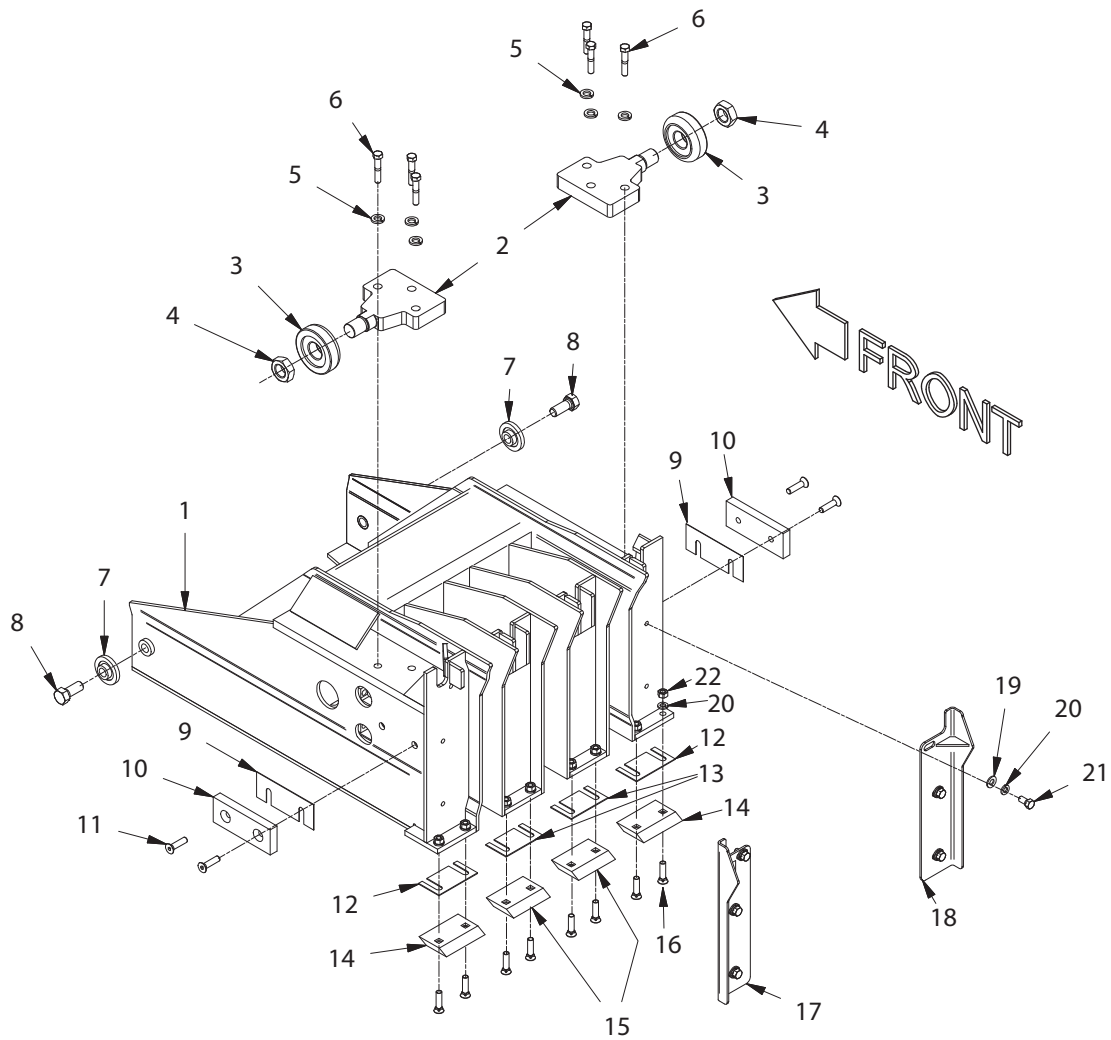
### Plunger Production Year

1999	PLUNGER ASSEMBLY 14.5 “ AND 15” (1ST GENERATION) .....	2
2000	PLUNGER ASSEMBLY 14.5” (2ND GENERATION) .....	4
2000	PLUNGER ASSEMBLY 15” (2ND GENERATION) .....	6
2000	PLUNGER ASSEMBLY 13.5” CHAMBER (3RD GENERATION) .....	8
2000	PLUNGER ASSEMBLY 14.5” CHAMBER (3RD GENERATION) .....	10
2000	PLUNGER ASSEMBLY 15.5” CHAMBER (3RD GENERATION) .....	12
2002	PLUNGER ASSEMBLY 15” CHAMBER (4TH GENERATION).....	14
2002	PLUNGER ASSEMBLY, 16” CHAMBER (4TH GENERATION) .....	16
2004	PLUNGER ASSEMBLY, 15” CHAMBER (5TH GENERATION) .....	18
2004	PLUNGER ASSEMBLY, 16” CHAMBER (5TH GENERATION) .....	20

### Double Plunger Roller Conversion Kits

BALER S/N 101-136	DOUBLE PLUNGER ROLLER CONVERSION KITS .....	22
137 THROUGH 147 AND 149	DOUBLE PLUNGER ROLLER CONVERSION KITS .....	24
148 AND 150 THROUGH 161	DOUBLE PLUNGER ROLLER CONVERSION KITS .....	26

# PLUNGER ASSEMBLY 14.5 " AND 15" (1ST GENERATION)





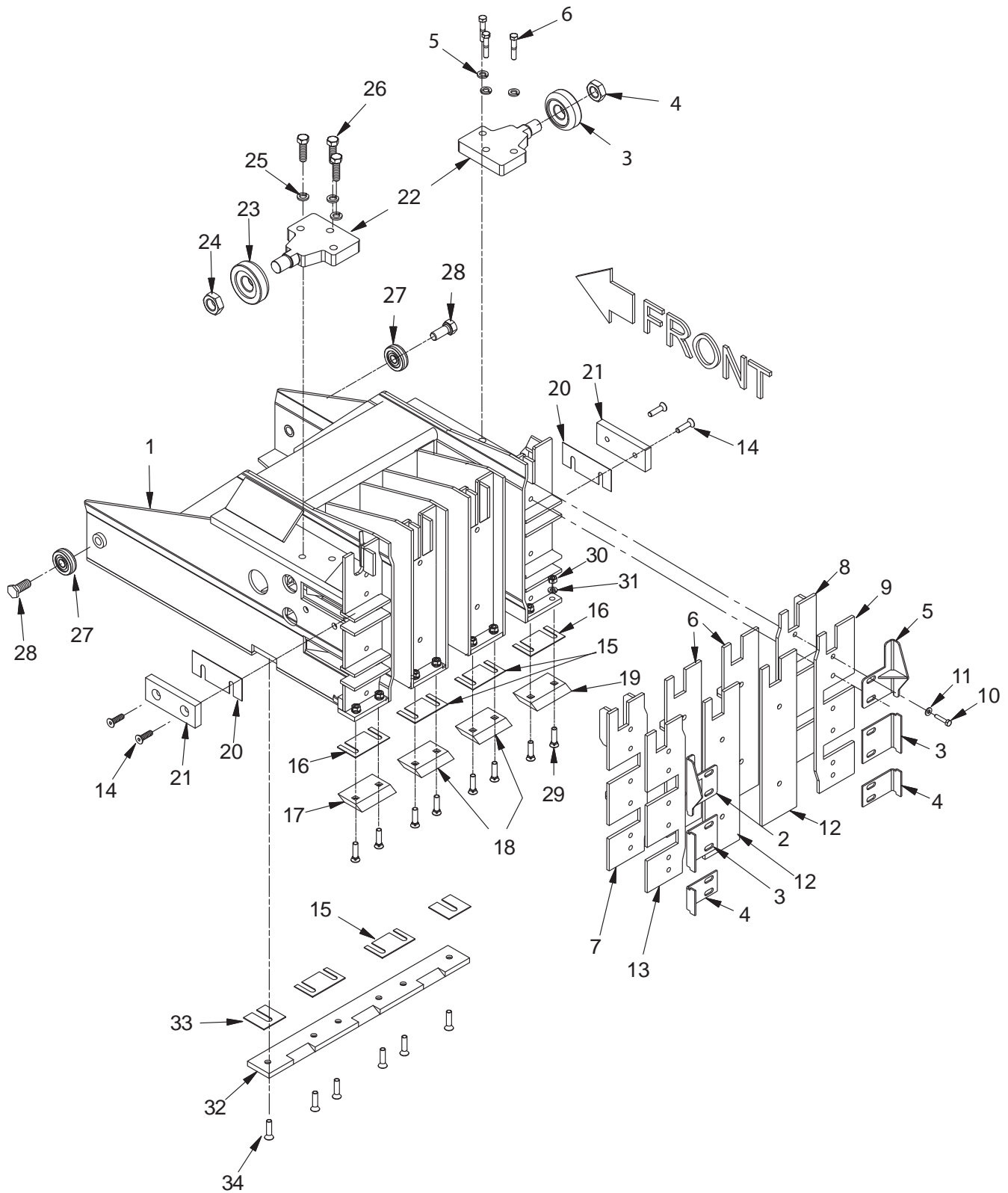
## PLUNGER ASSEMBLY 14.5 “ AND 15” (1ST GENERATION)

REF NO.	PART NO.	DESCRIPTION	QTY. USED
	<b>904828</b>	<b>PLUNGER ASSEMBLY 15”</b>	
	<b>904829</b>	<b>PLUNGER ASSEMBLY 14.5”</b>	
1 *	-----	PLUNGER	1
2	SHF0030848	. REAR PLUNGER ROLLER SHAFT BLOCK	2
3	BRGM306DDB	. ROLLER BEARING, PLUNGER	2
4	NEJ0001000	. ESNA JAM NUT	2
5	WLK0000500	. LOCKWASHER	6
6	SCC0050005	. CAPSCREW	6
7	BRG203KRR3	. FRONT PLUNGER ROLLER BEARING	2
8	PLG0034588	. CAPSCREW	2
9	PLG0031037	. SHIM; PLUNGER HARD SLIDE	A/R
10	PLG0031035	. PLUNGER HARD SLIDE	2
11	00426371	. SOCKET HD CAP SCREW	4
12	SHM0031388	. OUTER PLUNGER KNIFE SHIM 16GA	A/R
	SHM0031389	. OUTER PLUNGER KNIFE SHIM .012	A/R
13	SHM0031386	. INNER PLUNGER KNIFE SHIM 16GA	A/R
	SHM0031387	. INNER PLUNGER KNIFE SHIM .012	A/R
14	KNF0030953	. OUTER PLUNGER KNIFE	2
15	KNF0030954	. INNER PLUNGER KNIFE	2
16	SCO0030002	. CAPSCREW	8
17	PLG0031022	. L.H. PLUNGER SIDE EXTENSION	1
18	PLG0031021	. R.H. PLUNGER SIDE EXTENSION	1
19	00103341	. WASHER, FLAT	6
20	234135	. WASHER, LOCK	14
21	R13812369	. CAPSCREW	6
22	221707W	. NUT, HEX	8

\* See Chart

CHAMBER INST	ITEM 1
904828	PLG0030880
904829	PLG0034243

# PLUNGER ASSEMBLY 14.5" (2ND GENERATION)



## PLUNGER ASSEMBLY 14.5" (2ND GENERATION)

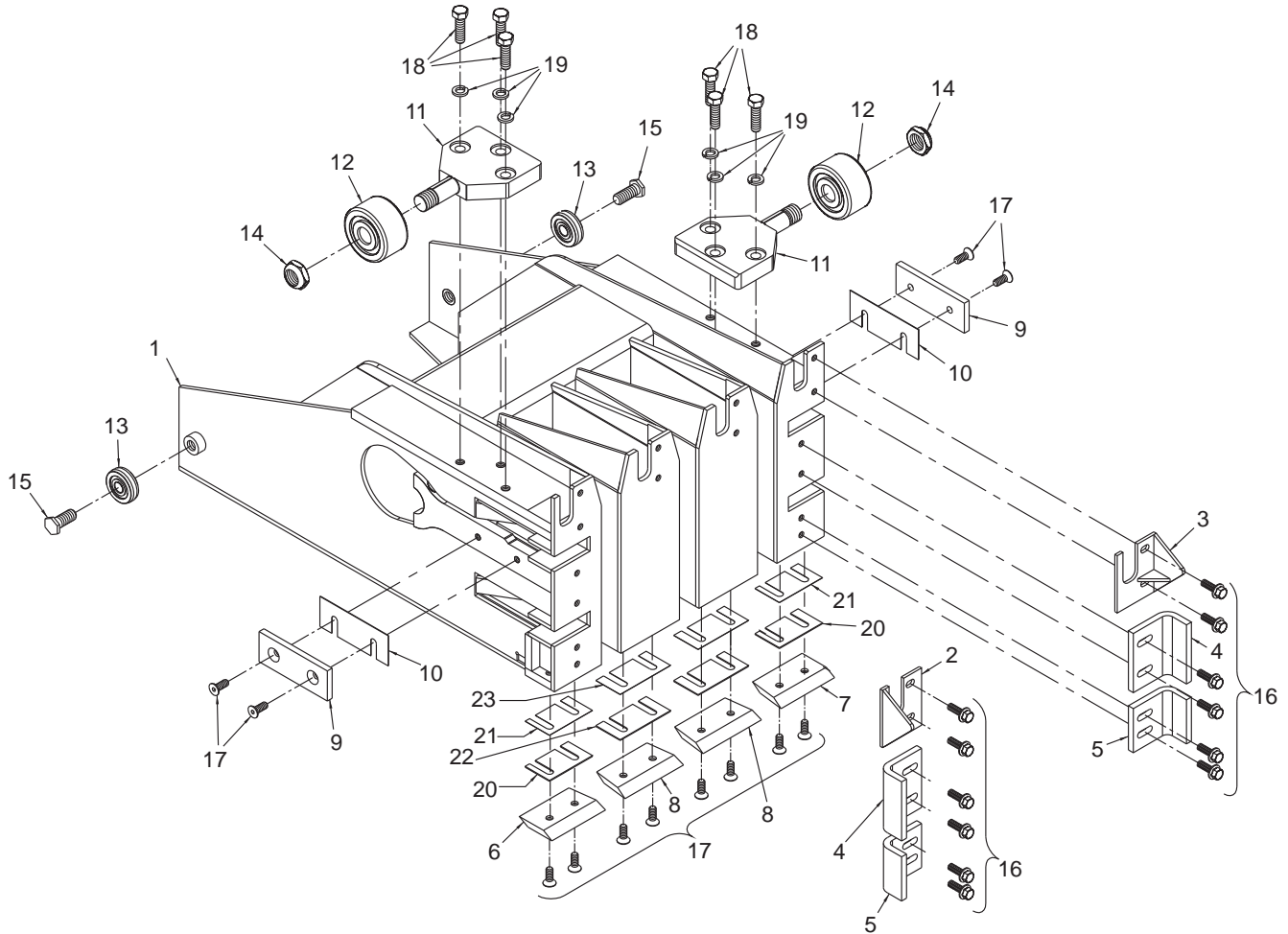
REF NO.	PART NO.	DESCRIPTION	QTY. USED
	<b>904831</b>	<b>PLUNGER ASSEMBLY 14.5"</b>	
1	PLG0035059	. PLUNGER	1
2	PLG0035076	. EXTENSION, TOP LH	2
3	PLG0034954	. CENTER PLUNGER EXTENSION	2
4	PLG0034955	. BOTTOM PLUNGER EXTENSION	2
5	PLG0035075	. RH TOP PLUNGER EXTENSION	1
6	PLG0035364	. CENTER PLUNGER FACE	2
7	PLG0035362	. LEFT PLUNGER FACE	1
8	PLG0035366	. RIGHT PLUNGER FACE	1
9	PLG0035367	. RH PLUNGER FACE	A/R
10	SCC0010007	. CAPSCREW	16
11	WAS0000125	. WASHER, FLAT	16
12	PLG0035365	. CENTER PLUNGER FACE PLATE	A/R
13	PLG0035363	. PLATE, FACE LH	A/R
14	00426371	. SOCKET HD CAP SCREW	4
15	SHM0031386	. SHIM; INNER 16 GA	A/R
	SHM0031387	. SHIM; INNER .012"	A/R
16	SHM0031388	. SHIM; OUTER 16 GA	A/R
	SHM0031389	. SHIM; OUTER .012"	A/R
17	KNF0034496	. LH OUTER PLUNGER KNIFE	1
18	KNF0034498	. INNER PLUNGER KNIFE	2
19	KNF0034497	. RH OUTER PLUNGER KNIFE	1
20	PLG0031037	. SHIM; PLUNGER HARD SLIDE	A/R
21	PLG0031035	. PLUNGER HARD SLIDE	2
22	SHF0030848	. BLOCK, REAR ROLLER PLUNGER	2
23	BRGM306DDB	. ROLLER BEARING, PLUNGER	2
24	NEJ0001000	. ESNA JAM NUT NC	2
25	WLK0000500	. LOCKWASHER	6
26	SCC0050005	. CAPSCREW	6
27	BRG203KRR3	. FRONT PLUNGER ROLLER BEARING	2
28	PLG0034588	. CAPSCREW	2
29	SCO0030002	. CAPSCREW	8
30	221707W	. NUT, HEX	8
31	234135	. WASHER, LOCK	8
32	KNF0034529	. KNIFE, PLUNGER, SECONDARY	1
33	SHM0034534	. SHIM, KNIFE, PLUNGER, SEC. OUTER .012	A/R
	SHM0034535	. SHIM, KNIFE, PLUNGER, SEC. OUTER 16GA	A/R



## PLUNGER ASSEMBLY 15" (2ND GENERATION)

REF NO.	PART NO.	DESCRIPTION	QTY. USED
	<b>904830</b>	<b>PLUNGER ASSEMBLY 15"</b>	
1	PLG0035058	. PLUNGER	1
2	PLG0034953	. TOP LH PLUNGER EXTENSION	1
3	PLG0034954	. CENTER PLUNGER EXTENSION	2
4	PLG0034955	. BOTTOM PLUNGER EXTENSION	2
5	PLG0034956	. TOP RH PLUNGER EXTENSION	1
6	PLG0035301	. CENTER PLUNGER FACE	2
7	PLG0035299	. LEFT PLUNGER FACE	1
8	PLG0035303	. R.H. PLUNGER FACE EXTENSION	1
9	PLG0035304	. RIGHT PLUNGER FACE PLATE SPACER	A/R
10	SCC0010007	. CAPSCREW	16
11	WAS0000125	. WASHER, FLAT	16
12	PLG0035302	. CENTER PLUNGER FACE PLATE SPACER	A/R
13	PLG0035300	. PLATE, FACE LH	A/R
14	00426371	. SOCKET HD CAP SCREW	4
15	SHM0031386	. SHIM; INNER 16 GA	A/R
	SHM0031387	. SHIM; INNER .012"	A/R
16	SHM0031388	. SHIM; OUTER 16 GA	A/R
	SHM0031389	. SHIM; OUTER .012"	A/R
17	KNF0034496	. LH OUTER PLUNGER KNIFE	1
18	KNF0034498	. INNER PLUNGER KNIFE	2
19	KNF0034497	. RH OUTER PLUNGER KNIFE	1
20	PLG0031037	. SHIM; PLUNGER HARD SLIDE	A/R
21	PLG0031035	. PLUNGER HARD SLIDE	2
22	SHF0030848	. BLOCK, REAR ROLLER PLUNGER	2
23	BRGM306DDB	. ROLLER BEARING, PLUNGER	2
24	NEJ0001000	. ESNA JAM NUT NC	2
25	WLK0000500	. LOCKWASHER	6
26	SCC0050005	. CAPSCREW	6
27	BRG203KRR3	. FRONT PLUNGER ROLLER BEARING	2
28	PLG0034588	. CAPSCREW	2
29	SCO0030002	. CAPSCREW	8
30	221707W	. NUT, HEX	8
31	234135	. WASHER, LOCK	8
32	KNF0034529	. KNIFE, PLUNGER, SECONDARY	1
33	SHM0034534	. SHIM, KNIFE, PLUNGER, SEC. OUTER	A/R
	SHM0034535	. SHIM, KNIFE, PLUNGER, SEC. OUTER	A/R

# PLUNGER ASSEMBLY, 13.5" CHAMBER (3RD GENERATION)

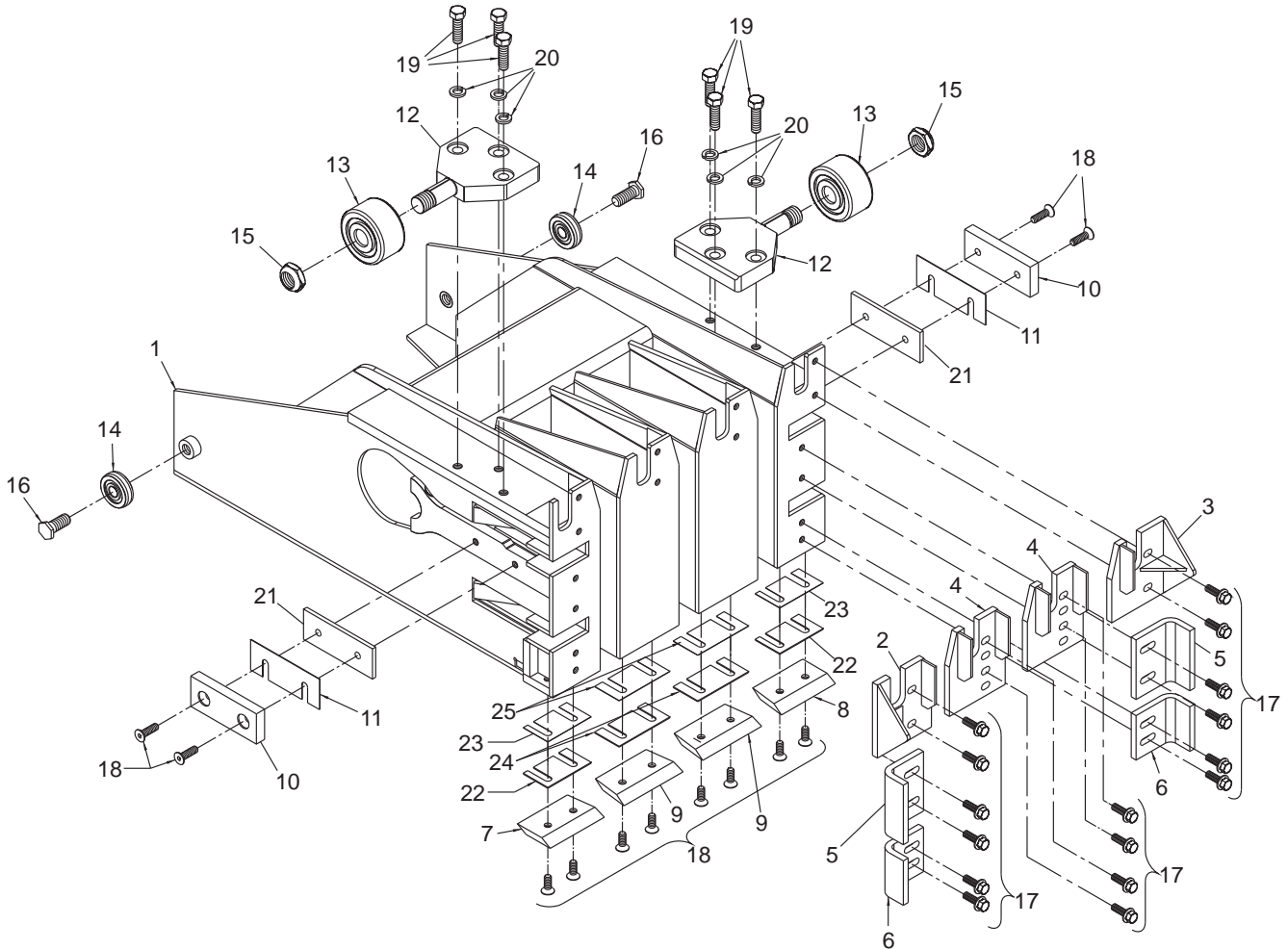


FRONT

## PLUNGER ASSEMBLY, 13.5" CHAMBER (3RD GENERATION)

REF NO.	PART NO.	DESCRIPTION	QTY. USED
	<b>PLG0035473</b>	<b>PLUNGER ASSEMBLY 13.5" CHAMBER</b>	
1	PLG0035400	. PLUNGER	1
2	EXT0035444	. UPPER LH PLUNGER FACE EXTENSION 13.5"	1
3	EXT0035451	. UPPER RH PLUNGER FACE EXTENSION 13.5"	1
4	EXT0035438	. CENTER PLUNGER FACE EXTENSION	2
5	EXT036731A	. PLUNGER FACE EXTENSION	2
6	KNF0035463	. LH OUTER PLUNGER KNIFE 14" CHAMBER	1
7	KNF0035482	. RH OUTER PLUNGER KNIFE 14" CHAMBER	1
8	KNF0035465	. INNER PLUNGER KNIFE	2
9	PLG0035466	. PLUNGER HARD SLIDE 14" CHAMBER	2
10	PLG0031037	. PLUNGER HARD SLIDE SHIM	A/R
11	SHF0035705	. PLUNGER ROLLER SHAFT, REAR BLOCK	2
12	BRG0000013	. ROLLER BEARING	2
13	BRG203KRR3	. FRONT PLUNGER ROLLER BEARING	2
14	NEJ0001000	. ESNA JAM NUT	2
15	PLG0034588	. CAPSCREW	2
16	134803W	. SCREW, SERRATED	12
17	R13801254	. CAPSCREW	12
18	221569W	. CAPSCREW	6
19	234665	. LOCKWASHER	6
20	SHM0035659	. OUTER PLUNGER KNIFE SHIM 16 GA	2
21	SHM0035660	. OUTER PLUNGER KNIFE SHIM 30 GA	2
22	SHM0035661	. INNER PLUNGER KNIFE SHIM 16 GA	2
23	SHM0035662	. INNER PLUNGER KNIFE SHIM 30 GA	2

# PLUNGER ASSEMBLY 14.5" CHAMBER (3RD GENERATION)



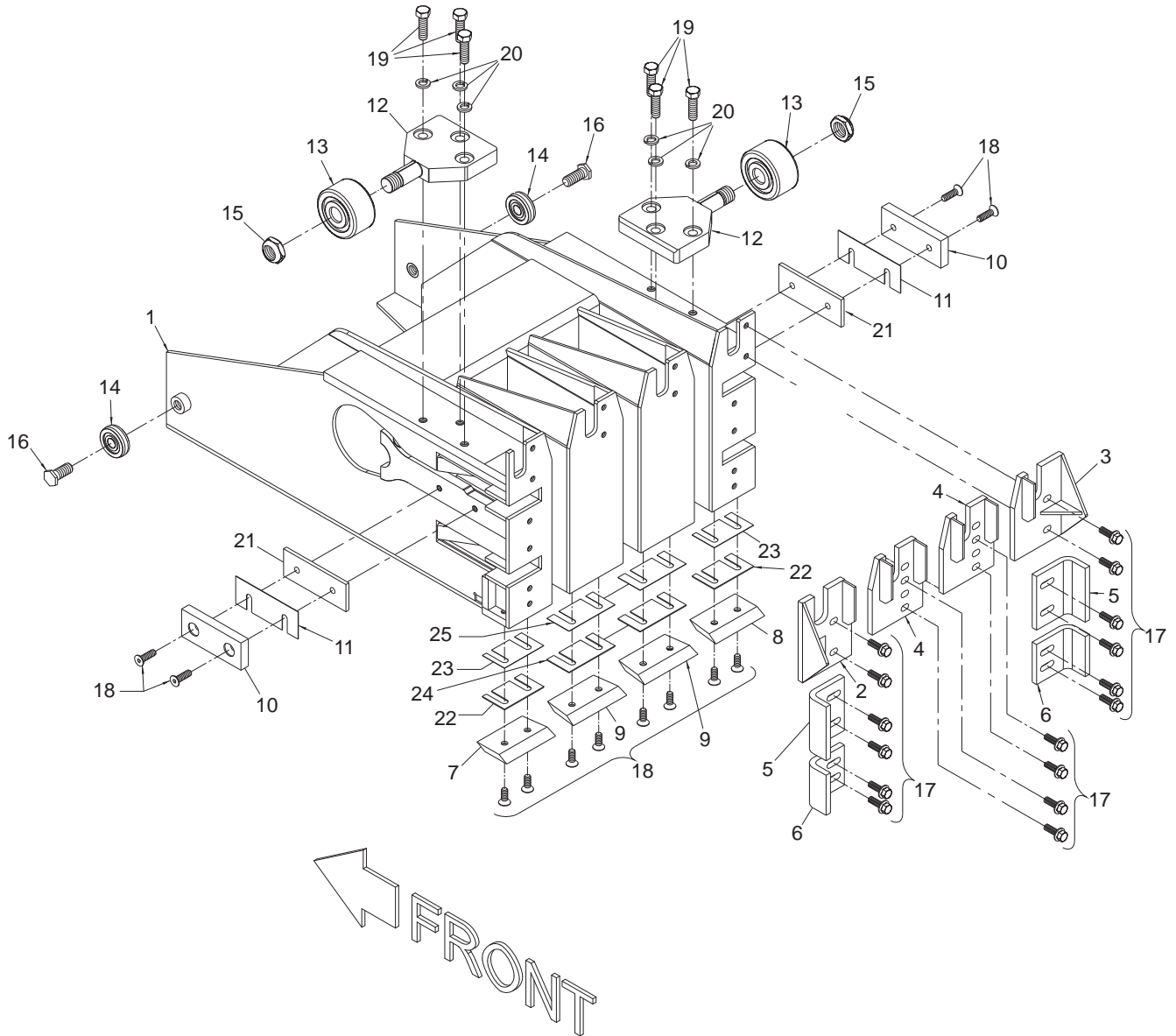
← FRONT



## PLUNGER ASSEMBLY 14.5" CHAMBER (3RD GENERATION)

REF NO.	PART NO.	DESCRIPTION	QTY. USED
	<b>PLG0035472</b>	<b>PLUNGER ASSEMBLY 14.5" CHAMBER</b>	
1	PLG0035400	. PLUNGER	1
2	EXT0035440	. UPPER LH PLUNGER FACE EXTENSION 14-1/2"	1
3	EXT0035442	. UPPER RH PLUNGER FACE EXTENSION 14-1/2"	1
4	EXT0035436	. UPPER MIDDLE PLUNGER FACE EXTENSION	2
5	EXT0035438	. CENTER PLUNGER FACE EXTENSION	2
6	EXT0035439	. LOWER PLUNGER FACE EXTENSION	2
7	KNF0035483	. LH OUTER PLUNGER KNIFE 15" & 16"	1
8	KNF0035464	. RH OUTER PLUNGER KNIFE 15" & 16"	1
9	KNF0035465	. INNER PLUNGER KNIFE	2
10	PLG0031035	. PLUNGER HARD SLIDE SHIM	2
11	PLG0031037	. PLUNGER HARD SLIDE SHIM	A/R
12	SHF0035705	. PLUNGER ROLLER SHAFT, REAR BLOCK	2
13	BRG0000013	. ROLLER BEARING	2
14	BRG203KRR3	. FRONT PLUNGER ROLLER BEARING	2
15	NEJ0001000	. ESNA JAM NUT NC 1"	2
16	PLG0034588	. CAPSCREW REWORK	2
17	SMS0000181	. WHIZ BOLT	16
18	SCO0030002	. CAPSCREW	14
19	SCC0050005	. CAPSCREW	6
20	WLK0000500	. LOCKWASHER	6
21	SPC0035599	. PLUNGER HARD SLIDE	2
22	SHM0035659	. OUTER PLUNGER KNIFE SHIM,16 GA	2
23	SHM0035660	. OUTER PLUNGER KNIFE SHIM,30 GA	2
24	SHM0035661	. INNER PLUNGER KNIFE SHIM,16 GA	2
25	SHM0035662	. INNER PLUNGER KNIFE SHIM,30 GA	2

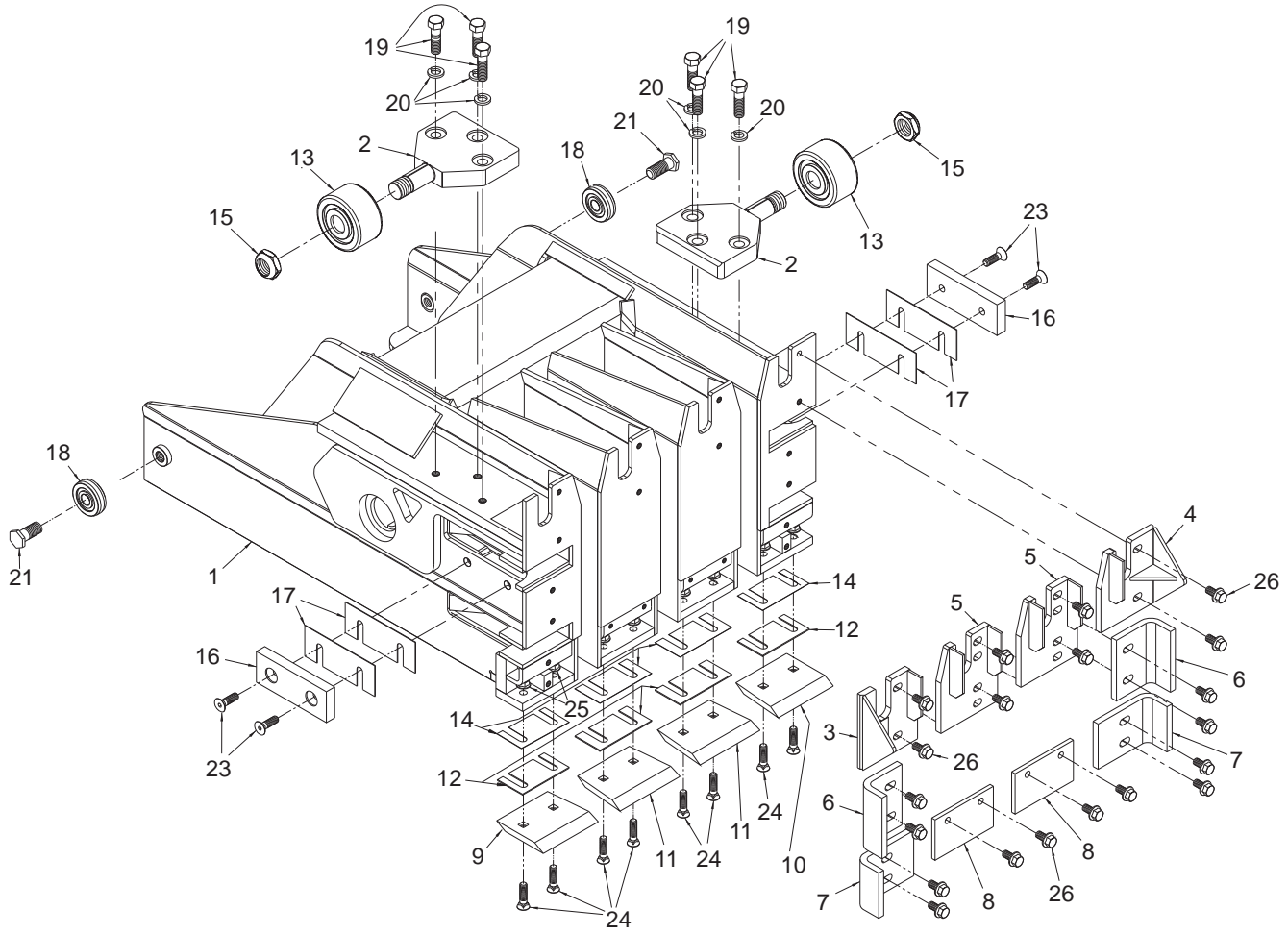
# PLUNGER ASSEMBLY, 15.5" CHAMBER (3RD GENERATION)



## PLUNGER ASSEMBLY, 15.5" CHAMBER (3RD GENERATION)

REF NO.	PART NO.	DESCRIPTION	QTY. USED
	<b>PLG0035471</b>	<b>PLUNGER ASSEMBLY 15.5" CHAMBER</b>	
1	PLG0035400	. PLUNGER	1
2	EXT0035429	. UPPER LH PLGR FACE EXTENSION 14-1/2	1
3	EXT0035434	. UPPER RH PLGR FACE EXTENSION 14-1/2	1
4	EXT0035436	. UPPER MIDDLE PLGR FACE EXTENSION	2
5	EXT0035438	. CENTER PLUNGER FACE EXTENSION	2
6	EXT0035439	. LOWER PLUNGER FACE EXTENSION	2
7	KNF0035483	. LH OUTER PLG KNF 15" & 16"	1
8	KNF0035464	. RH OUTER PLG KNF 15" & 16"	1
9	KNF0035465	. INNER PLG KNIFE-ALL CHAMBERS	2
10	PLG0031035	. PLUNGER HARD SLIDE SHIM	2
11	PLG0031037	. PLUNGER HARD SLIDE SHIM	A/R
12	SHF0035705	. PLG ROLLER SHAFT,REAR BLOCK	2
13	BRG0000013	. ROLLER BEARING	2
14	BRG203KRR3	. FRONT PLUNGER ROLLER BEARING	2
15	NEJ0001000	. ESNA JAM NUT NC 1"	2
16	PLG0034588	. CAPSCREW	2
17	SMS0000181	. WHIZ BOLT	16
18	SCO0030002	. CAPSCREW	12
19	SCC0050005	. CAPSCREW	6
20	WLK0000500	. WASHER, LOCK	6
21	SPC0035599	. PLUNGER HARD SLIDE	2
22	SHM0035659	. OUTER PLUNGER KNIFE SHIM,16 GA	2
23	SHM0035660	. OUTER PLUNGER KNIFE SHIM,30 GA	2
24	SHM0035661	. INNER PLUNGER KNIFE SHIM,16 GA	2
25	SHM0035662	. INNER PLUNGER KNIFE SHIM,30 GA	2

# PLUNGER ASSEMBLY, 15" CHAMBER (4TH GENERATION)

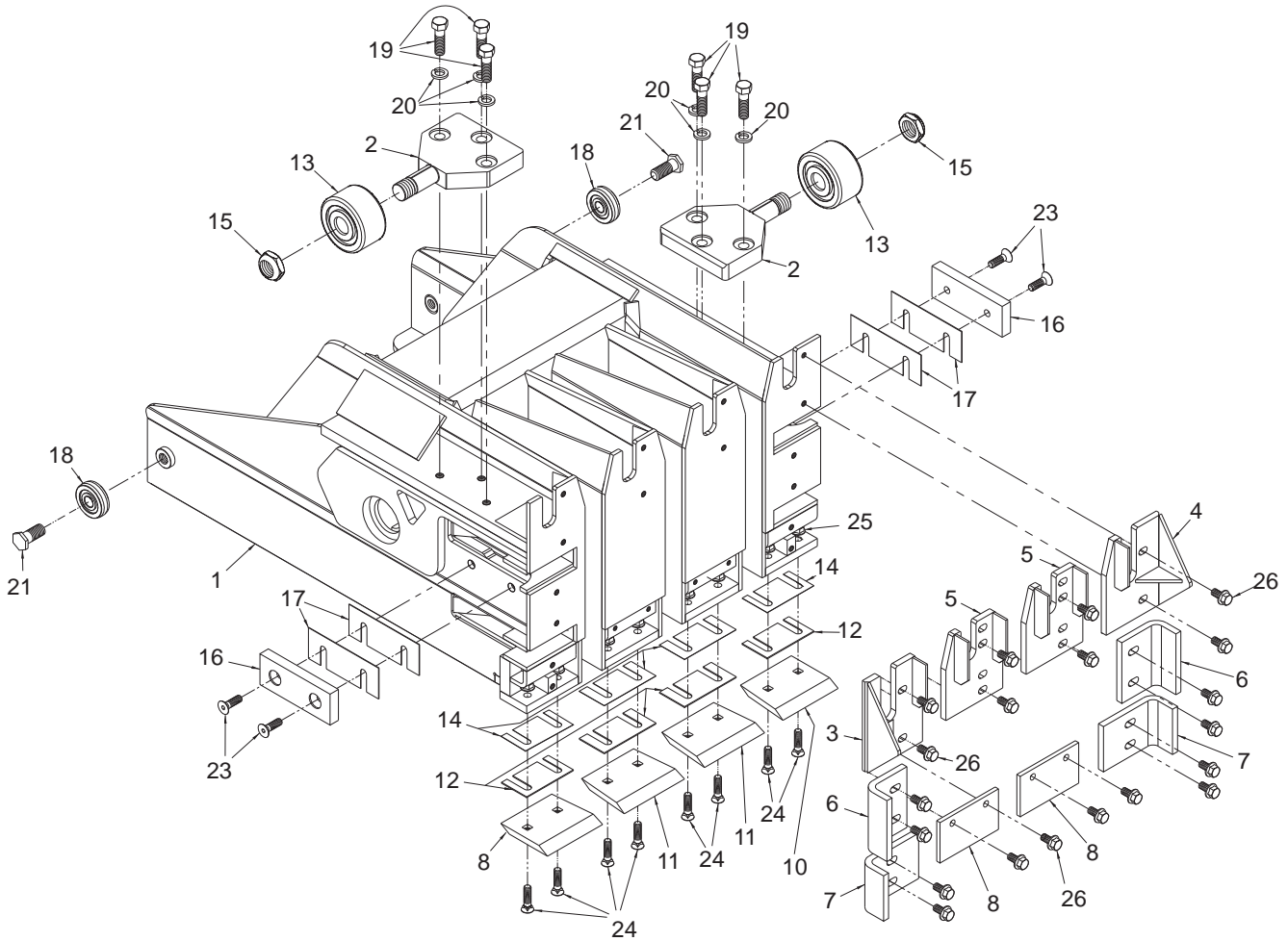


← FRONT

## PLUNGER ASSEMBLY, 15" CHAMBER (4TH GENERATION)

REF NO.	PART NO.	DESCRIPTION	QTY. USED
	<b>PLG0036230</b>	<b>PLUNGER ASSEMBLY 15" CHAMBER</b>	
1	PLG036190F	. PLUNGER	1
2	SHF0035705	. PLUNGER ROLLER SHAFT, REAR BLOCK	2
3	EXT036222B	. PLUNGER FACE EXTENSION LH	1
4	EXT026223B	. PLUNGER FACE EXTENSION RH	1
5	EXT036206B	. EXTENSION, PLUNGER FACE	2
6	EXT036226A	. PLUNGER FACE EXTENSION CENTER	2
7	EXT036227A	. EXTENSION	2
8	PLT035839A	. CAP	2
9	KNF036235B	. PLUNGER KNIFE, OUTER, LH	1
10	KNF036236B	. PLUNGER KNIFE, OUTER, RH	1
11	KNF036242B	. PLUNGER KNIFE, INNER	2
12	SHM036237A	. SHIM, 16 GA, OUTER/INNER KNIFE	A/R
13	BRG0000013	. ROLLER BEARING, PLUNGER	2
14	SHM036238A	. SHIM, 30 GA, OUTER/INNER KNIFE	A/R
15	NEJ0001000	. ESNA JAM NUT	2
16	PLG0031035	. PLUNGER HARD SLIDE	2
17	PLG0031037	. PLUNGER HARD SLIDE SHIM	4
18	BRG203KRR3	. FRONT PLUNGER ROLLER BEARING	2
19	SCC0050005	. CAPSCREW	6
20	WLK0000500	. LOCKWASHER	6
21	PLG0034588	. CAPSCREW	2
23	SCO0030003	. CAPSCREW	4
24	PWB3751500	. BOLT, PLOW	8
25	NMS0000375	. NUT, SERRATED	8
26	SMS0000181	. BOLT, SERRATED	20

# PLUNGER ASSEMBLY, 16" CHAMBER (4TH GENERATION)

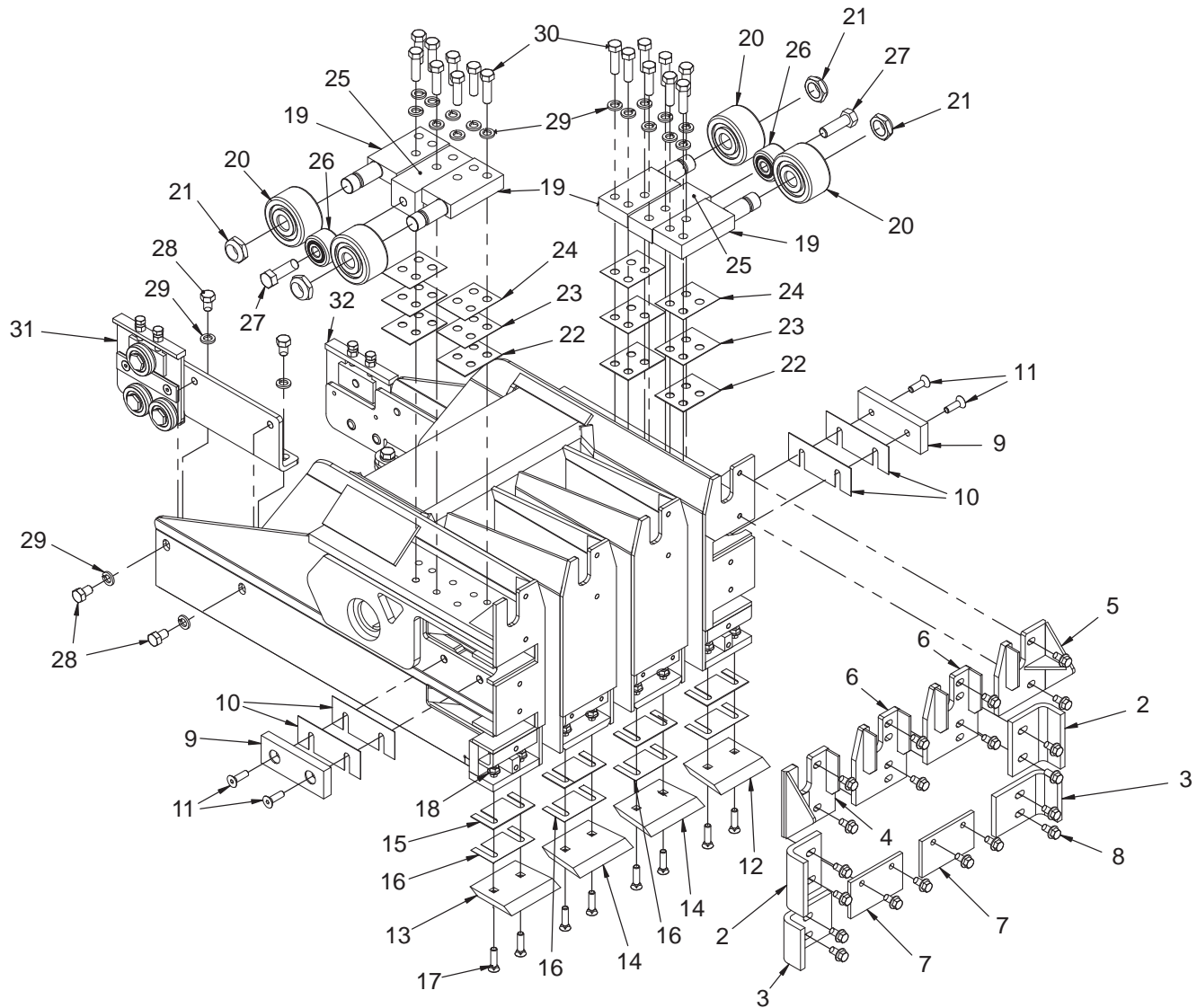


← FRONT

## PLUNGER ASSEMBLY, 16" CHAMBER (4TH GENERATION)

REF NO.	PART NO.	DESCRIPTION	QTY. USED
	<b>PLG036231E</b>	<b>PLUNGER ASSEMBLY 16" CHAMBER</b>	
1	PLG036190F	. PLUNGER	1
2	SHF0035705	. PLUNGER ROLLER SHAFT, REAR BLOCK	2
3	EXT036224B	. PLUNGER FACE EXTENSION LH UPPER	1
4	EXT036225B	. PLUNGER FACE EXTENSION RH UPPER	1
5	EXT036206B	. EXTENSION	2
6	EXT036226A	. PLUNGER FACE EXTENSION CENTER	2
7	EXT036227A	. EXTENSION	2
8	PLT035839A	. CAP	2
9	KNF036235B	. PLUNGER KNIFE, OUTER, LH	1
10	KNF036236B	. PLUNGER KNIFE, OUTER, RH	1
11	KNF036242B	. PLUNGER KNIFE, INNER	2
12	SHM036237A	. SHIM, 16 GA, OUTER/INNER KNIFE	A/R
13	BRG0000013	. ROLLER BEARING	2
14	SHM036238A	. SHIM, 30 GA, OUTER/INNER KNIFE	A/R
15	NEJ0001000	. ESNA JAM NUT	2
16	PLG0031035	. PLUNGER HARD SLIDE	2
17	PLG0031037	. PLUNGER HARD SLIDE SHIM	4
18	BRG203KRR3	. FRONT PLUNGER ROLLER BEARING	2
19	SCC0050005	. CAPSCREW	6
20	WLK0000500	. WASHER, LOCK	6
21	PLG0034588	. CAPSCREW	2
23	SCO0030003	. CAPSCREW	4
24	PWB3751500	. BOLT, PLOW	8
25	NMS0000375	. NUT, SERRATED	8
26	SMS0000181	. BOLT, SERRATED	20

# PLUNGER ASSEMBLY, 15" CHAMBER (5TH GENERATION)



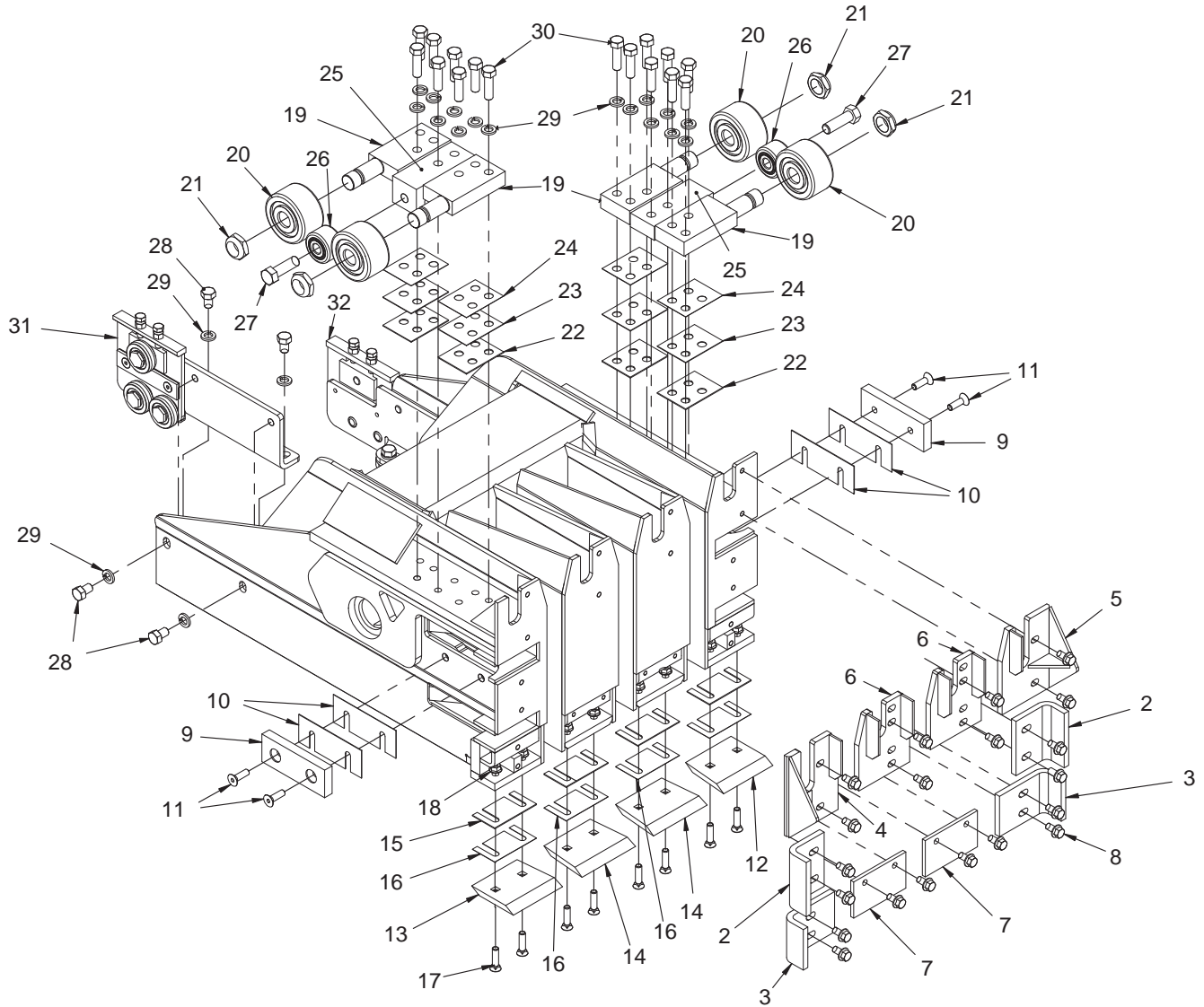
FRONT



## PLUNGER ASSEMBLY, 15" CHAMBER (5TH GENERATION)

REF NO.	PART NO.	DESCRIPTION	QTY. USED
	<b>PLG0037206</b>	<b>PLUNGER ASSEMBLY 15" CHAMBER</b>	
1	PLG037208E	. PLUNGER	1
2	EXT036226A	. PLUNGER FACE EXTENSION CENTER	2
3	EXT036227A	. EXTENSION	2
4	EXT026222B	. PLUNGER FACE EXTENSION LH	1
5	EXT036223B	. EXTENSION, PLUNGER FACE RH	1
6	EXT036206B	. EXTENSION, PLUNGER FACE	2
7	PLT035839A	. CAP	2
8	SMS0000181	. BOLT, SERRATED	20
9	PLG0031035	. PLUNGER HARD SLIDE	2
10	PLG0031037	. PLUNGER HARD SLIDE SHIM	4
11	SCO0030003	. CAPSCREW	4
12	KNF036236B	. PLUNGER KNIFE, OUTER, RH	1
13	KNF036235B	. PLUNGER KNIFE, OUTER, LH	1
14	KNF036242B	. PLUNGER KNIFE, INNER	2
15	SHM036237A	. SHIM, 16 GA, F/OUTER/INNER KNIFE	4
16	SHM036238A	. PLUNGER HARD SLIDE	4
17	PWB3751500	. BOLT, PLOW	8
18	NMS0000375	. NUT, SERRATED	8
19	SHF036507D	. SHAFT BLOCK, REAR PLG ROLLER	4
20	BRG0000013	. ROLLER BEARING, PLUNGER	4
21	NEJ0001000	. ESNA JAM NUT	4
22	SHM036648A	. REAR ROLLER BLOCK SHIM 16GA	4
23	SHM036649A	. REAR ROLLER BLOCK SHIM 20GA	4
24	SHM036650A	. REAR ROLLER BLOCK SHIM 28GA	4
25	SHF036537D	. CENTER REAR ROLLER SHF BLK	2
26	BRG0000005	. PLUNGER ROLLER, 2" DIA YOKE	2
27	SCC0070006	. CAPSCREW	2
28	SCC0050001	. CAPSCREW	8
29	WLK0000500	. WASHER, LOCK	24
30	SCC0050005	. CAPSCREW	16
31	PLG036523D	. MONTING ASY, LH FNT PLG ROLLER	1
32	PLG036524D	. MONTING ASY, RH FNT PLG ROLLER	1

# PLUNGER ASSEMBLY, 16" CHAMBER (5TH GENERATION)

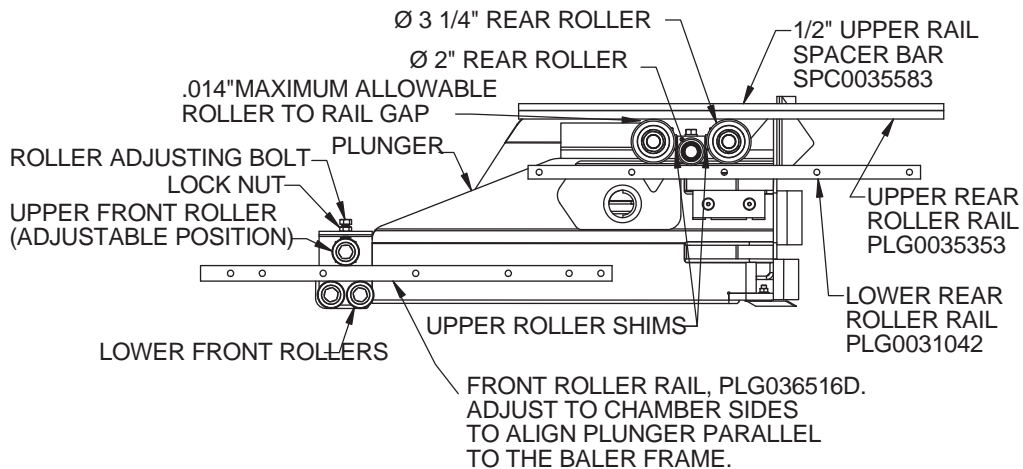
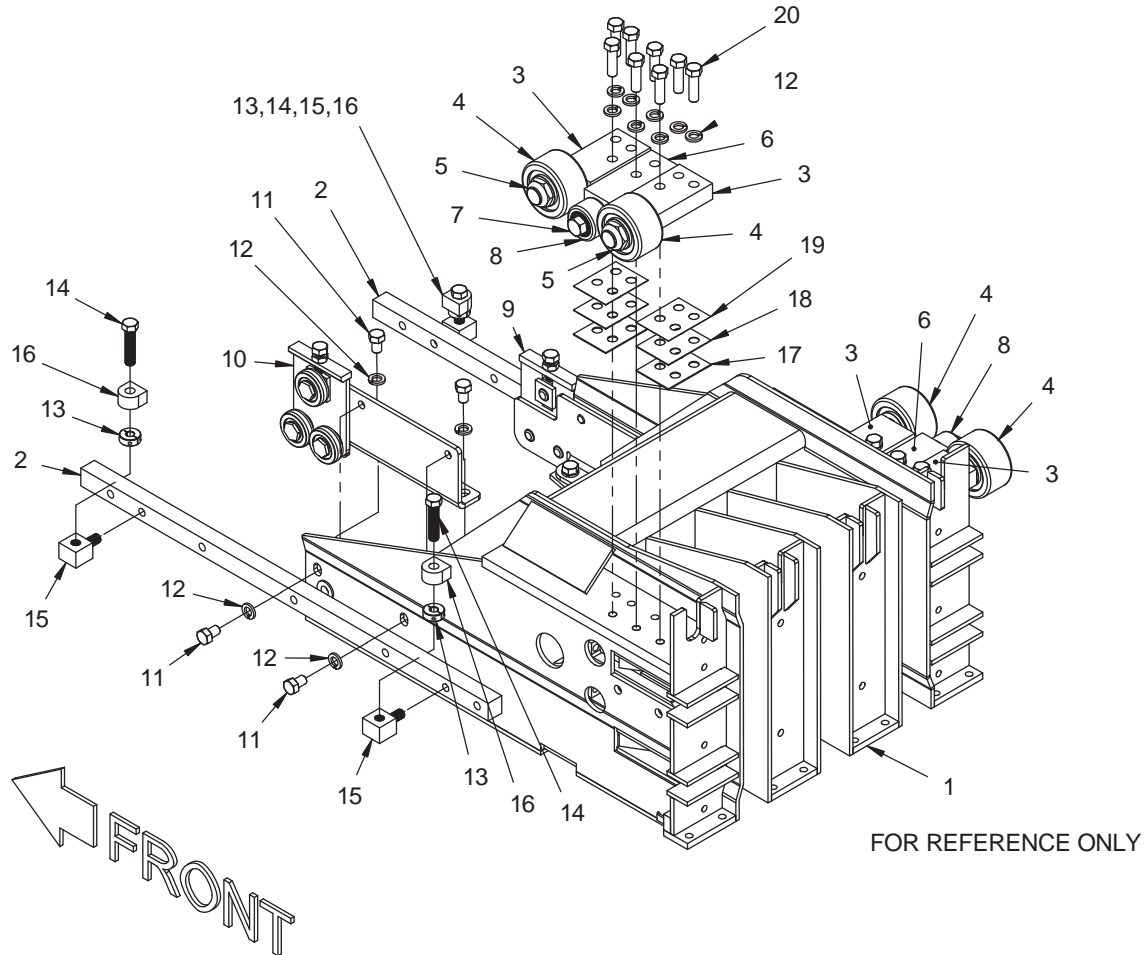


← FRONT

## PLUNGER ASSEMBLY, 16" CHAMBER (5TH GENERATION)

REF NO.	PART NO.	DESCRIPTION	QTY. USED
	<b>PLG037207E</b>	<b>PLUNGER ASSEMBLY 16" CHAMBER</b>	
1	PLG037208E	. PLUNGER	1
2	EXT036226A	. PLUNGER FACE EXTENSION CENTER	2
3	EXT036227A	. PLATE, EXTENSION	2
4	EXT036224B	. PLUNGER FACE EXTENSION LH UPPER	1
5	EXT036225B	. PLUNGER FACE EXTENSION RH UPPER	1
6	EXT036206B	. EXTENSION	2
7	PLT035839A	. PLATE,CAP	2
8	134803W	. SCREW, SERRATED	20
9	PLG0031035	. PLUNGER HARD SLIDE	2
10	PLG0031037	. PLUNGER HARD SLIDE SHIM	4
11	R13801254	. CAPSCREW	4
12	KNF036236B	. PLUNGER KNIFE, OUTER, RH	1
13	KNF036235B	. PLUNGER KNIFE, OUTER, LH	1
14	KNF036242B	. PLUNGER KNIFE, INNER, 1390	2
15	SHM036237A	. SHIM, 16 GA, OUTER/INNER KNIFE	4
16	SHM036238A	. SHIM, 30 GA, OUTER/INNER KNIFE	4
17	PWB3751500	. BOLT, PLOW	8
18	09411507	. NUT, SERRATED	8
19	SHF036507D	. SHAFT BLOCK,REAR	4
20	BRG0000013	. ROLLER BEARING,PLUNGER	4
21	NEJ0001000	. ESNA JAM NUT	4
22	SHM036648A	. REAR PLUNGER ROLLER BLOCK SHIM 16GA	4
23	SHM036649A	. REAR PLUNGER ROLLER BLOCK SHIM 20GA	4
24	SHM036650A	. REAR PLUNGER ROLLER BLOCK SHIM 28GA	4
25	SHF036537D	. CEN REAR PLG ROLLER SHAFT BLK	2
26	BRG0000005	. PLUNGER ROLLER	2
27	Y17C-1032	. CAPSCREW	2
28	R13801840	. CAPSCREW	8
29	234665	. LOCKWASHER	24
30	221569W	. CAPSCREW	16
31	PLG036523D	. MOUNTING ASSEMBLY,LH	1
32	PLG036524D	. MOUNTING ASSEMBLY,RH	1

# DOUBLE PLUNGER ROLLER CONVERSION KIT #1



LH SIDE VIEW SHOWN - THE PLUNGER SHOWN HERE IS PLG036190F AS USED ON SN: HIGHER THAN #149.

## DOUBLE PLUNGER ROLLER CONVERSION KIT #1

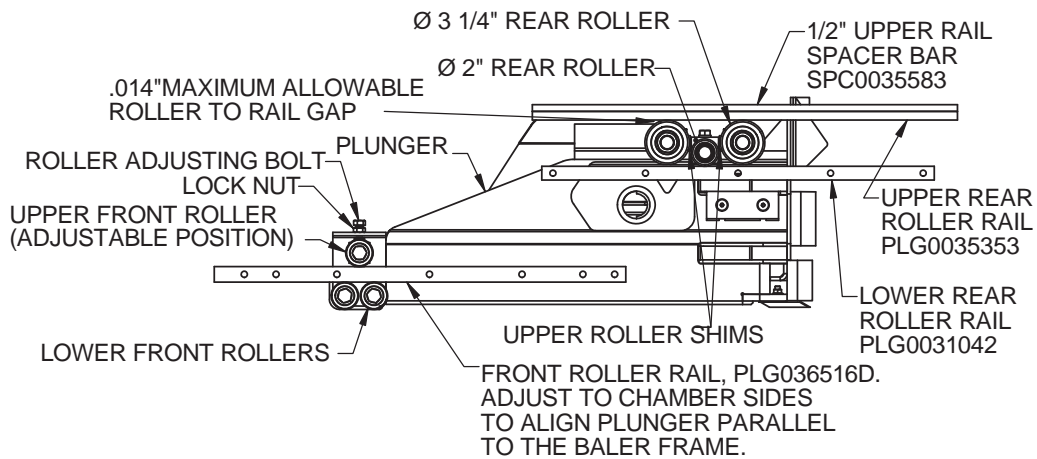
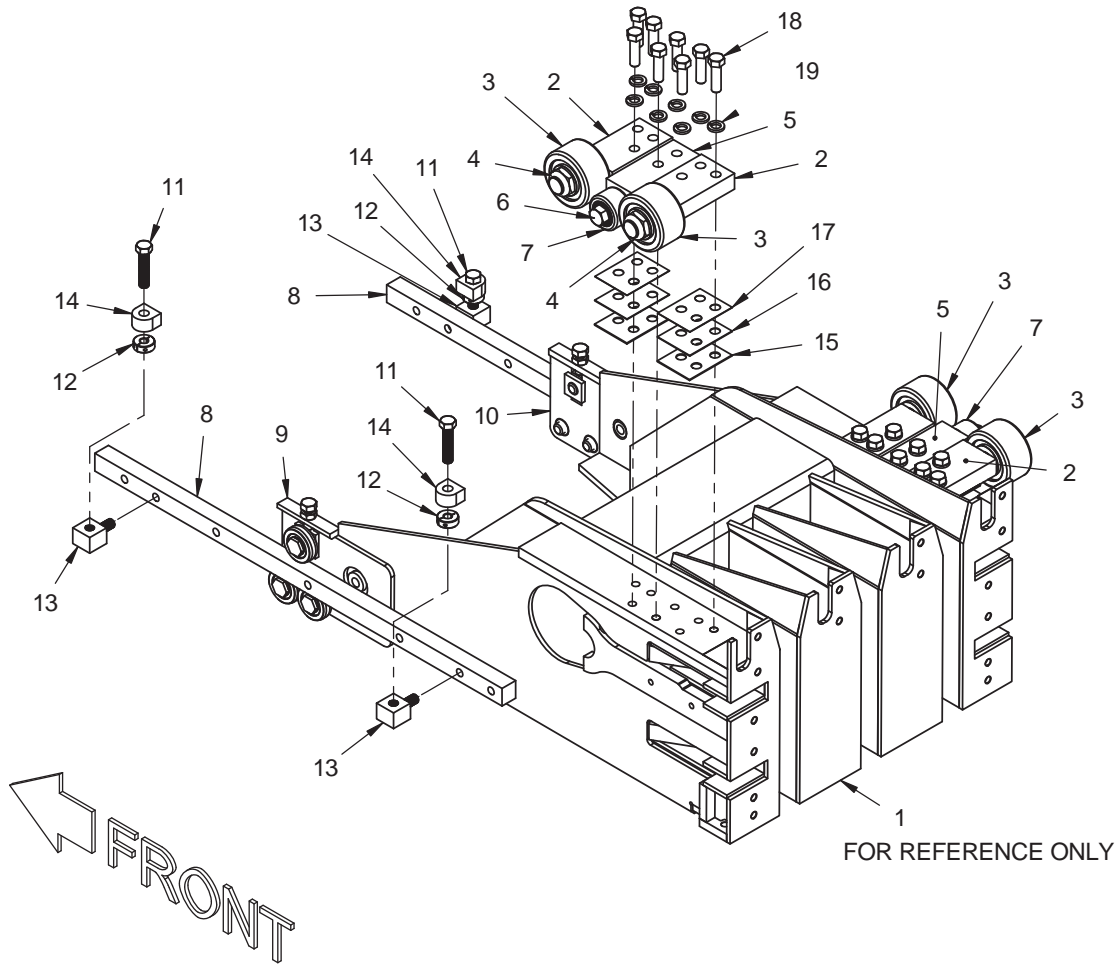
REF NO.	PART NO.	DESCRIPTION	QTY. USED
	* KIT037140D	<b>DOUBLE PLUNGER ROLLER CONVERSION KIT</b>	
1	-----	PLUNGER (REFERENCE ONLY)	
2	PLG036516D	. FRONT PLUNGER ROLLER RAIL	2
3	SHF036507D	. SHAFT BLOCK,REAR	4
4	BRG0000013	. ROLLER BEARING, IDLER-ROLLER	4
5	NEJ0001000	. ESNA JAM NUT	4
6	SHF037115D	. PLATE,SHAFT BLOCK	2
7	Y17C-1032	. CAPSCREW	2
8	BRG0000005	. PLUNGER ROLLER	2
9	PLG036524D	. MONTING ASSEMBLY,RH FNT	1
10	PLG036523D	. MONTING ASSEMBLY,LH FNT	1
11	R13801840	. CAPSCREW	8
12	R13812512	. LOCKWASHER	24
13	ZZ00020001	. STEEL SHAFT COLLAR	4
14	HTB0050007	. HEX TAP BOLT	4
15	BLK036513A	. FRONT PLUNGER ROLLER RAIL BLOCK	4
16	DRW036514A	. FRONT PLUNGER ROLLER RAIL BLOCK	4
17	SHM036648A	. REAR PLUNGER ROLLER BLOCK SHIM 16GA	4
18	SHM036649A	. REAR PLUNGER ROLLER BLOCK SHIM 20GA	8
19	SHM036650A	. REAR PLUNGER ROLLER BLOCK SHIM 28GA	8
20	221569W	. CAPSCREW	16

DOCUMENTS:

**DOC0035058	. PLUNGER MODIFICATION
**DOC036933D	. DOUBLE PLUNGER ROLLER SETUP
**KIT037140D	. DOUBLE PLUNGER ROLLER CONVERSION KIT
** DOC031078E	. CHAMBER WEAR LINER ASSEMBLY
** CHM036654E	. LH CHAMBER SIDE ASSEMBLY
** CHM036656E	. RH CHAMBER SIDE ASSEMBLY
** 89-033	. 89-033, INSTRUCTIONS SHEET #1

\* THIS KIT IS USED WITH SERIAL NUMBER 101-136, USING PLUNGER PLG0030880, PLG0035058 AND PLG0035059.

# DOUBLE PLUNGER ROLLER CONVERSION KIT #2



LH SIDE VIEW SHOWN - THE PLUNGER SHOWN HERE IS PLG036190F AS USED ON SN: HIGHER THAN #149.

## DOUBLE PLUNGER ROLLER CONVERSION KIT #2

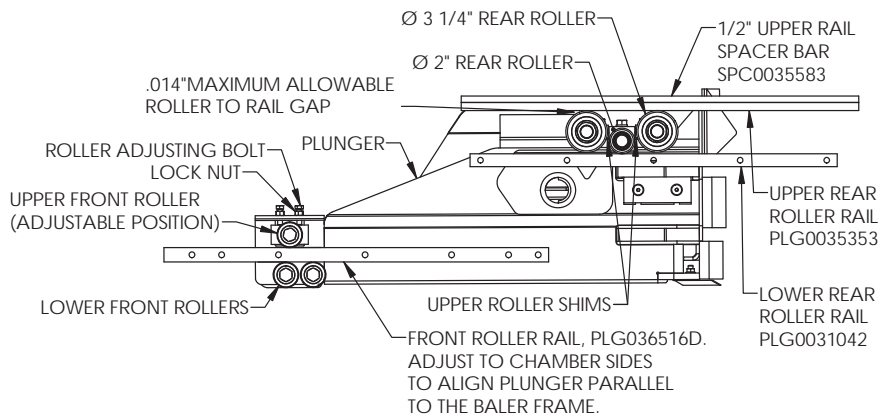
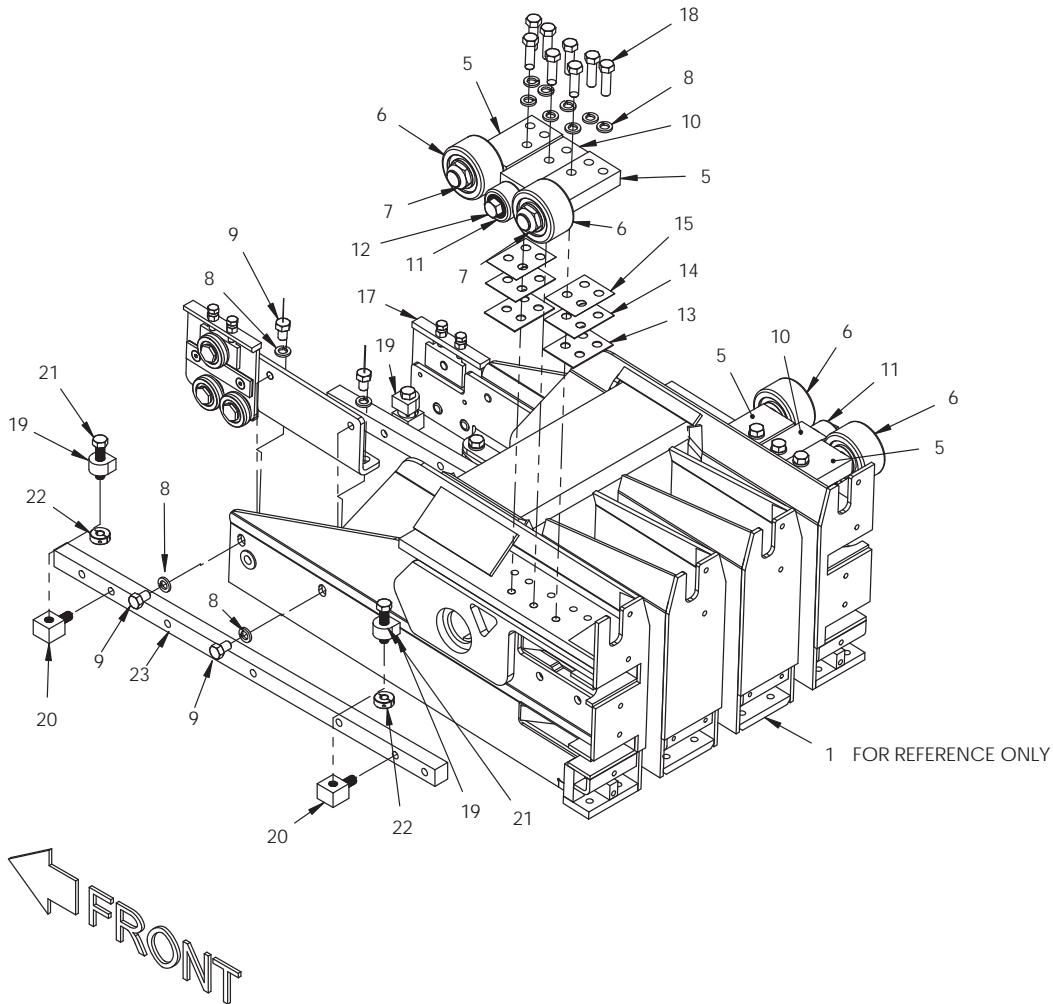
REF NO.	PART NO.	DESCRIPTION	QTY. USED
	* KIT037133D	1390 DOUBLE PLUNGER ROLLER CONVERSION #2 KIT	
1	-----	PLUNGER (REFERENCE ONLY)	
2	SHF036507D	. SHAFT BLOCK, REAR	4
3	BRG0000013	. ROLLER BEARING, IDLER-ROLLER	4
4	NEJ0001000	. ESNA JAM NUT	4
5	SHF036537D	. CENTER REAR PLUNGER ROLLER SHAFT	2
6	Y17C-1032	. CAPSCREW	2
7	BRG0000005	. PLUNGER ROLLER	2
8	PLG036516D	. FRONT PLUNGER ROLLER RAIL	1
9	PLG037126D	. LH FRONT PLUNGER ROLLER ASSEMBLY	1
10	PLG037127D	. RH FRONT PLUNGER ROLLER ASSEMBLY	16
11	HTB0050007	. HEX TAPBOLT	4
12	ZZ00020001	. STEEL SHAFT COLLAR	4
13	BLK036513A	. FRONT ROLLER RAIL JACK BLOCK	4
14	DRW036514A	. FRONT PLUNGER ROLLER RAIL	6
15	SHM036648A	. REAR PLUNGER ROLLER BLOCK SHIM 16GA	4
16	SHM036649A	. REAR PLUNGER ROLLER BLOCK SHIM 20GA	8
17	SHM036650A	. REAR PLUNGER ROLLER BLOCK SHIM 28GA	8
18	SCC0050005	. CAPSCREW	16
19	234665	. MEDIUM LOCKWASHER	16

DOCUMENTS:

** DOC037131E	. 1390 DOUBLE PLUNGER ROLLER MOD
** DOC031078E	. CHAMBER WEAR LINER ASSEMBLY
** CHM036654E	. LH CHAMBER SIDE ASSEMBLY
** CHM036656E	. RH CHAMBER SIDE ASSEMBLY
** 89-034	. INSTRUCTIONS SHEET #2

\* THIS KIT IS USED WITH SERIAL NUMBER 137 THROUGH 147 AND 149, USING PLUNGER PLG0035400

# DOUBLE PLUNGER ROLLER CONVERSION KIT #3



LH SIDE VIEW SHOWN - THE PLUNGER SHOWN HERE IS PLG036190F AS USED ON #149 AND HIGHER.



## DOUBLE PLUNGER ROLLER CONVERSION KIT #3

REF NO.	PART NO.	DESCRIPTION	QTY. USED
	* KIT037141D	<b>1390 DOUBLE PLUNGER ROLLER CONVERSION #3 KIT</b>	
1	-----	PLUNGER (REFERENCE ONLY)	
5	SHF036507D	. SHAFT BLOCK, REAR	4
6	BRG0000013	. ROLLER BEARING, IDLER-ROLLER	4
7	NEJ0001000	. ESNA JAM NUT NC	4
8	234665	. LOCKWASHER	24
9	R13801840	. CAPSCREW	2
10	SHF036537D	. CENTER REAR PLUNGER ROLLER SHAFT BLOCK	2
11	BRG0000005	. PLUNGER ROLLER, 2 DIA YOKE STYLE	2
12	Y17C-1032	. CAPSCREW	2
13	SHM036648A	. REAR PLUNGER ROLLER BLOCK SHIM 16GA	4
14	SHM036649A	. REAR PLUNGER ROLLER BLOCK SHIM-20GA	8
15	SHM036650A	. REAR PLATEG ROLLER BLOCK SHIM 28GA	8
16	PLG036523D	. MONTING ASSEMBLY, LH FNT	1
17	PLG036524D	. MONTING ASSEMBLY, RH FNT	1
18	221569W	. CAPSCREW	16
19	DRW036514A	. FRONT PLATEG ROLLER RAIL BLOCK	4
20	BLK036513A	. FRONT PLATEG ROLLER RAIL JACK BLOCK	4
21	HTB0050007	. HEX TAPBOLT-ZP	4
22	ZZ00020001	. STEEL SHAFT COLLAR	4
23	PLG036516D	. FRONT PLUNGER ROLLER RAIL	2

DOCUMENTS:

** DOC037139E	. MODIFICATION DETAILS FOR DOUBLE ROLLER
** DOC036933D	. 1390 DOUBLE PLUNGER ROLLER MOD
** DOC031078E	. CHAMBER WEAR LINER ASSEMBLY
** CHM036654E	. LH CHAMBER SIDE ASSEMBLY
** CHM036656E	. RH CHAMBER SIDE ASSEMBLY
** 89-035	. INSTRUCTIONS SHEET #3

\* THIS KIT IS USED WITH SERIAL NUMBER 148 AND 150 THROUGH 161, USING PLUNGER PLG036190F.



To find a dealer in your area,  
Call: 503-625-2560,  
Fax: 503-625-7269, or

Visit our website: <http://www.alliedsystems.com>

**Allied Systems**  
COMPANY

89-029 8/10  
Printed in USA

---