



Wheel Setup Instructions and Parts List



Side Feed Balers

89-054

A Product of

Allied Systems
COMPANY

Sherwood, Oregon USA

Rev: 07-2014

Contents

Description	Part Number	Page
Single 8-Hole Flotation RH 2 & 3-Tie	FOP0000103	4
Single 8-Hole Flotation LH 2-Tie	FOP0000104	5
Tandem 8-Hole Flotation LH 2-Tie	FOP0000108	6
Tandem 8-Hole Flotation LH 3-Tie	FOP0000114	7
Pickup Depth Wheel.....	FOP0000162	8
Tandem 8-Hole Flotation RH 2 & 3-Tie	FOP0000222	9
Tandem 8-Hole Highway LH 3-Tie	FOP0000248	10
Single 8-Hole Highway RH 2 & 3-Tie	FOP0000249	11
Tandem 8-Hole Highway RH.....	FOP0000250	12
Tandem 8-Hole Highway LH 2-Tie	FOP0000252	13
Tire & Wheel 8-Hole Highway LH 2-Tie	FOP0000253	14
Flotation Tire & Wheel 120" Tracking LH 3-Tie	FOP0000257	15
Tire & Wheel Single Highway RH (To Go With Walking Beam).....	FOP0908188	16
Tire & Wheels Walking Beam LH	FOP0000259	17
Tire & Wheels Walking Beam LH (Gearbox Baler).....	FOP0906436	18
Hydro PTO Tandem Highway LH 3-Tie	FOP0000262	19
Single 8-Hole Flotation RH 2 & 3-Tie.....	FOP0905142	20
Hydro Single Flotation LH 2 & 3-Tie.....	FOP0905262	21

This publication covers side feed balers with the 120" track axle that entered production in 2008. The first balers to receive this axle were:

ASC-0270-003	ASC-0370-603
275XXX-005	ASC-0375-006
ASC-0280-002	ASC-0380-018
ASC-0285-004	ASC-0385-086

For previous balers, see Publication 80-798.

The most current information can always be found on our web site: <http://www.alliedsystems.com>

Wheel Setup Instructions

WARNING

Make sure that everyone is clear when unloading baler.

WARNING

Make sure that the baler is secure and can not drop before attaching the wheel assemblies.

Torque Specifications

The following torque values are to be used on all fasteners unless otherwise specified.

Lubricated refers to fasteners in the “As Received” condition, which is normally a light preservative oil coating on unplated fasteners and no oil coating on plated fasteners. No special steps are taken to add further lubrication prior to assembly.

Anti-seize refers to parts that have had an anti-seize lubricant applied just prior to assembly.

BOLT SIZE-PITCH	LUBRICATED	WITH ANTI-SEIZE
GRADE 8 COURSE THREAD		
1/2"-13	96 ft-lbs	64 ft-lbs
3/4"-10	340 ft-lbs	230 ft-lbs
GRADE 8 FINE THREAD		
9/16"-18	110 ft-lbs	73 ft-lbs
5/8"-18	220 ft-lbs	145 ft-lbs
3/4"-16	380 ft-lbs	255 ft-lbs

Tire Inflation

Tires	Maximum Inflation
Flotation 11L-15 8 ply	36 psi (250 kPa)
Flotation 16.5L-16.1 10 ply	36 psi (250 kPa)
Highway 235/85R16 10 ply	80 psi (550 kPa)
Pickup Depth Wheel	20 psi (135 kPa)

Ground Speed

Tires	Maximum Road Speed
Flotation	25 mph (40 kph)
Highway	45* mph (70* kph)
*Slow Moving Vehicle Sign is required to be used when traveling on public roads at or below 25 mph (40 kph). Sign is to be removed when traveling over 25 mph (40 kph) on public roads.	

Single 8-Hole Flotation RH 2 & 3-Tie FOP0000103

Ref.	Part Number	Description	Qty.
1	F000007636	Spacer Plate	3
2	Y18C-1032	Cap Screw, 5/8 UNF X 2"	4
3	219530	Cap Screw, 5/8 UNF X 3-1/2"	5
4	F000007756	PL, RH Channel	1
5	WES0006250	5/8" Star Washer	10
6	199594W	Nut, 5/8 UNF	10
7	F000008003	Hub and Spindle 8 Hole	1
7a	F000008001	. Lug Bolts 9/16 NF	8
8	R13807958	Cap Screw, 5/8 UNF X 2 1/2"	1
9	F000007705	RH Brace	1
10	221569W	Cap Screw, 1/2 UNC x 1 3/4"	1
11	239519	Washer, Flat; 1/2"	1
12	223587	Nut, ESNA; 1/2" UNC	1
13	901467	Flotation Tire & Wheel	1
	F000008184	. Wheel F/Flotation Tire	1
	F000008028	. Tire 15" 8-PLY Flotation	1

A. Place (2) Item 2 Bolts through the bottom of the axle as shown in Figure 2-3-1.

B. (See Figure 2-3-1) Place (5) Item 3 Bolts through the front of the Mounting Channel. Place (3) Item 1 Spacer Plates and (1) Item 7 Hub and Spindle on the mounting channel. Secure the hub and spacer plates to the mounting channel with 5/8" star washers and nuts. Torque all nuts and bolts as per torque chart on page 2-3-1.

C. Place the Mounting Channel on the axle, then place Item 9, RH Brace as shown in Figure 2-3-1. Torque all nuts and bolts as per torque chart on page 2-3-1.

D. Mount the tire with the valve stem pointing to the inside of the baler (see Figure 2-3-2). Torque all lug bolts as per torque chart on page 2-3-1.

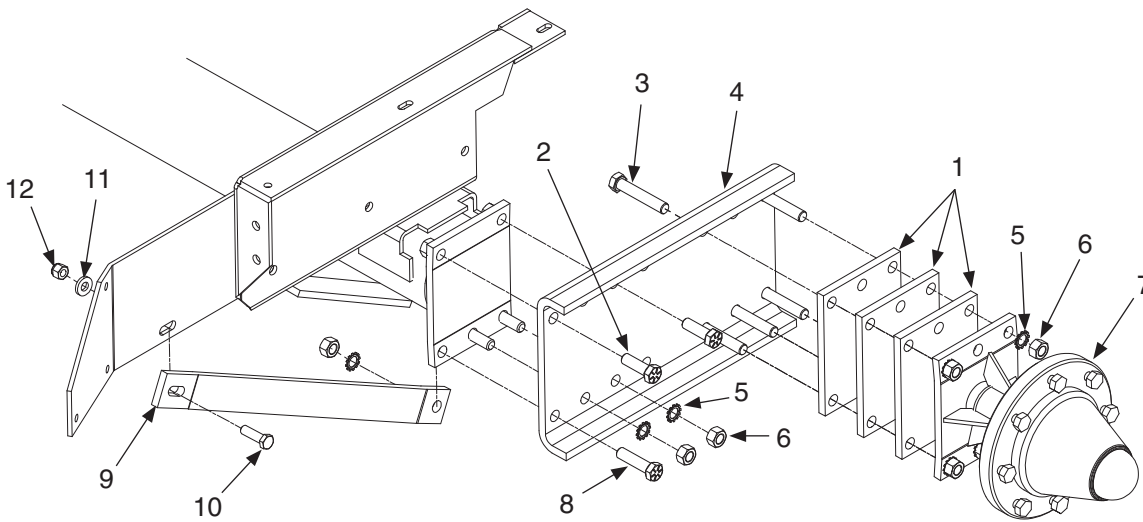


Figure 2-3-1 - Mounting Channel, Brace, Spacer's & Hub

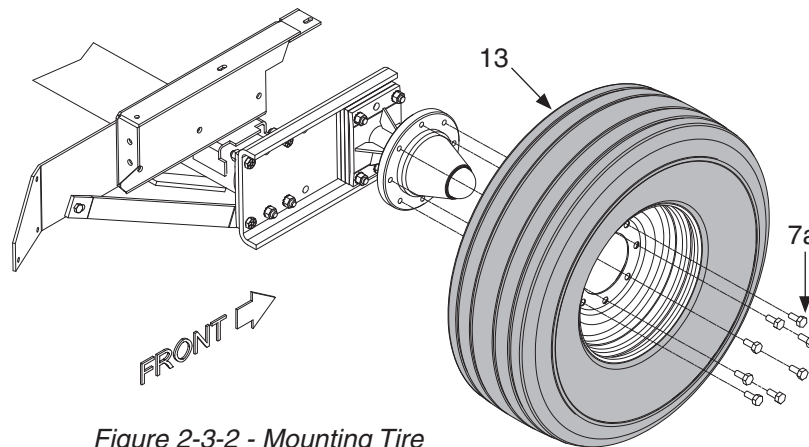


Figure 2-3-2 - Mounting Tire

Single 8-Hole Flotation LH 2-Tie FOP0000104

Ref.	Part Number	Description	Qty.
1	F000007636	Spacer Plate	2
2	R13806355	Cap Screw, 5/8 UNF x 3"	5
3	F000008003	Hub and Spindle 8 Hole	1
3a	F000008001	. Lug Bolts 9/16 UNF	8
4	WES0006250	5/8" Star Washer	5
5	199594W	Nut, 5/8 UNF	5
6	901467	Flotation Tire & Wheel	1
	F000008184	. Wheel F/Flotation Tire	1
	F000008028	. Tire 15 8-PLY Flotation	1

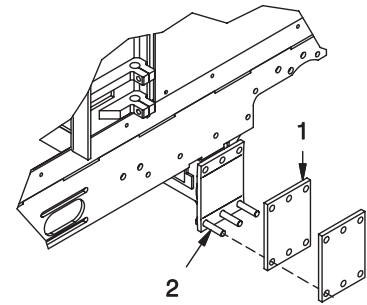


Figure 2-3-3 - Mounting Spacer's

A. Place (3) Item 2 Bolts through the axle, and (2) Item 1 Spacers as shown in Figure 2-3-3.

B. Place (2) Item 2 Bolts through the hub as shown in Figure 2-3-4. Place hub onto axle. Torque all nuts and bolts as per torque chart on page 2-3-1.

C. Mount the tire with the valve stem pointing to the inside of the baler as shown in Figure 2-3-5. Torque all lug bolts as per torque chart on page 2-3-1.

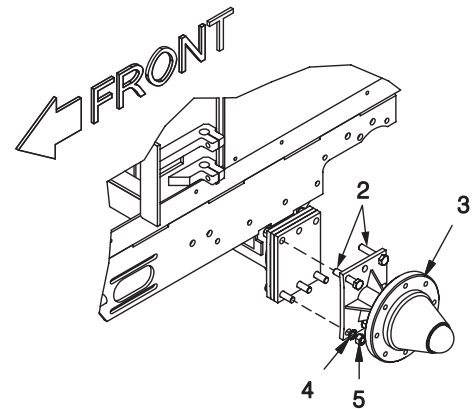


Figure 2-3-4 - Mounting Hub

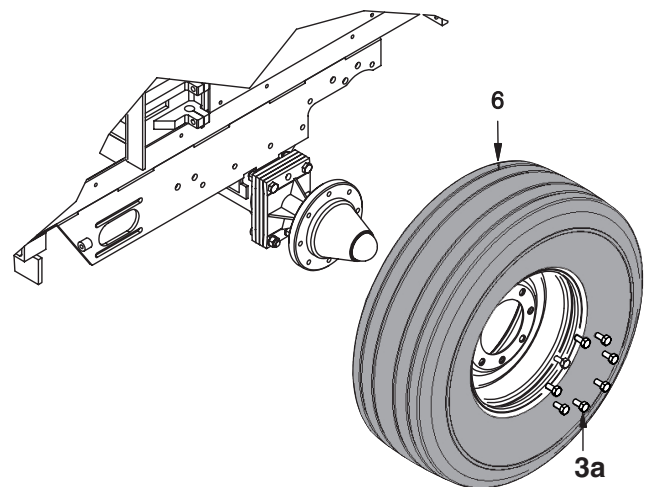


Figure 2-3-5 - Mounting Tire

Tandem 8-Hole Flotation LH 2-Tie FOP0000108

Ref.	Part Number	Description	Qty.
1	901620	Tandem Wheel Plate	1
2	901675	Spacer	1
3	R13807958	Cap Screw, 5/8 UNF X 2-1/2"	11
4	Y18C-1032	Cap Screw, 5/8 UNF X 2"	5
5	WES0006250	5/8" Star Washer	16
6	199594W	Nut, 5/8 UNF	16
7	RD00708601	Truss Rod 3/4" DIA X 30"	1
8	NMS0007125	Truss Rod Nut	2
9	R13809570	Jam Nut	2
10	F000007636	Spacer Plate	2
11	F000008003	Hub and Spindle 8 Hole	2
12	F000008001	. Lug Bolts 9/16 UNF	16
13	901467	Flotation Tire & Wheel	2
	F000008184	. Wheel F/Flotation Tire	1
	F000008028	. Tire 15 8-PLY Flotation Tubeless	

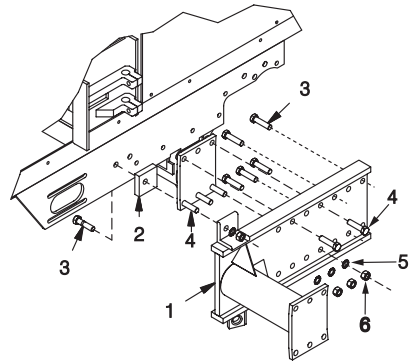


Figure 2-3-3 - Mounting Spacer & Tandem Plate

A. (See Figure 2-3-3) Place (3) Item 4 Bolts through the axle. Place (1) Item 3 Bolt through frame. Place (1) Item 1 Tandem Plate and (1) Item 2 Spacer as shown. Place remaining bolts, star washers, and nuts as shown, so the tandem plate and spacer are secure. Torque all nuts and bolts as per torque chart on page 2-3-1.

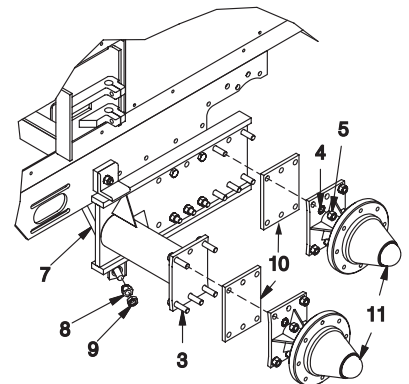


Figure 2-3-4 - Mounting Spacer Plates, Hubs & Truss Rod

B. (See Figure 2-3-4) Place (2) Item 10 Spacer Plates on the tandem plate. Place (2) Item 11 Hub and Spindle assemblies as shown. Place all bolts, star washers and nuts, so the hub and spindle are secure. Torque all nuts and bolts as per torque chart on page 2-3-1.

C. Before mounting the tires and wheels, place (1) Item 7 Truss Rod as shown in Figure 2-3-4. Secure truss rod finger tight with (2) Item 8 Truss Rod Nuts and (2) Item 9 Jam nuts.

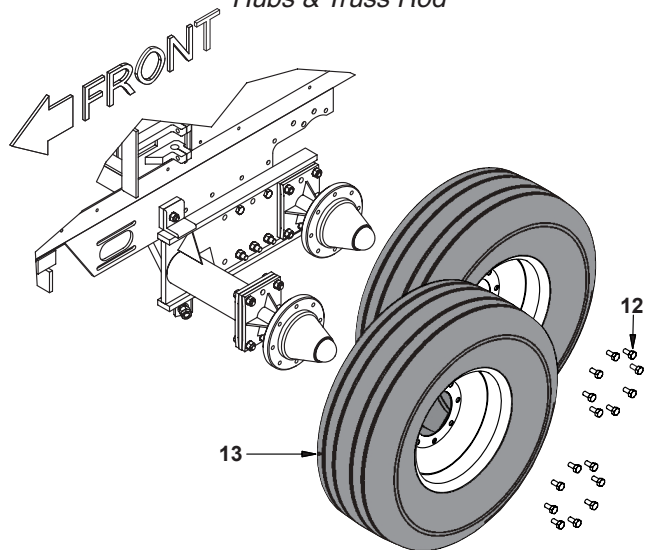


Figure 2-3-5 - Mounting Tires

D. Mount the tires with the valve stem pointing to the inside of the baler (see Figure 2-3-5). Torque lug bolts as per torque chart on page 2-3-1.

E. Tighten truss rod nuts and jam nuts when tires are on the ground with all of the baler's weight on them.

Tandem 8-Hole Flotation LH 3-Tie FOP0000114

Ref.	Part Number	Description	Qty
1	901620	Tandem Wheel Plate	1
2	PLT0026966	Spacer Plate 3/4"	1
3	901274	Bar, Spacer	1
4	219530	Cap Screw, 5/8 UNF X 3 1/2"	6
5	WES0006250	5/8" Star Washer	16
6	199594W	Nut, 5/8 UNF	16
7	R13807958	Cap Screw, 5/8 UNF X 2 1/2"	10
8	F000007636	Spacer Plate 1/2"	2
9	F000008003	Hub and Spindle 8 Hole	2
10	F000008001	. Lug Bolts 9/16 UNF	16
11	R13809570	Jam Nut	2
12	NMS0007125	Truss Rod Nut	2
13	RD00708600	Truss Rod	1
14	901467	Flotation Tire & Wheel	2
	F000008184	. Wheel F/Flotation Tire	1
	F000008028	. Tire 15 8-PLY Flotation	1

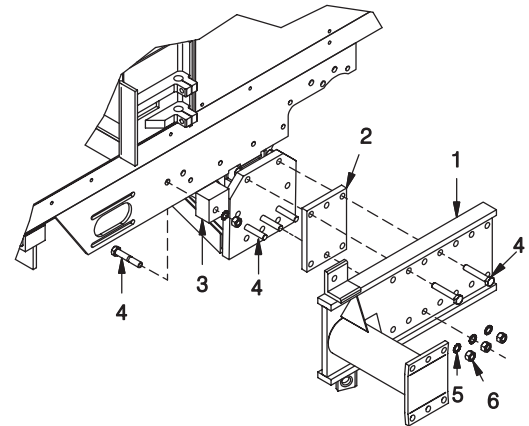


Figure 2-3-3 - Mounting Spacer Plate & Tandem Plate

A. (See Figure 2-3-3) Place (3) Item 4 Bolts through the axle. Place (1) Item 4 Bolt through frame. Place (1) Item 2 Spacer on axle. Place (1) Item 1 Tandem Plate and (1) Item 3 Spacer as shown. Place the rest of the bolts, star washers and nuts so the tandem plate and spacer are secure. Torque all nuts and bolts as per torque chart on page 2-3-1.

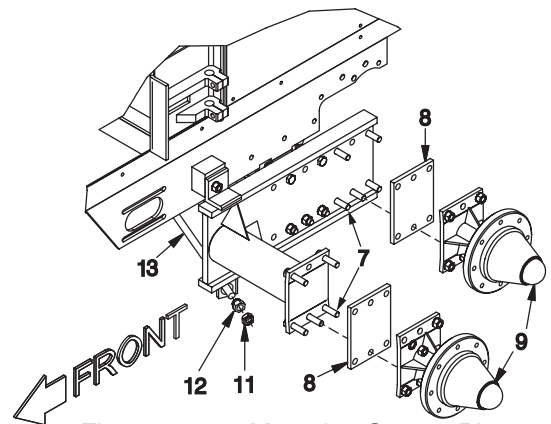


Figure 2-3-4 - Mounting Spacer Plates, Hubs & Truss Rod

B. (See Figure 2-3-4) Place (10) Item 7 Bolts in the Tandem Plate. Place (2) Item 8 Spacer Plates on the tandem plate followed by (2) Item 9 Hub and Spindle assemblies. Place all star washers and nuts so the hub and spindle and secure. Torque all nuts and bolts as per torque chart on page 2-3-1.

C. Place (1) Item 13 Truss Rod as shown in Figure 2-3-4. Secure truss rod finger tight with (2) Item 12 Truss Rod Nuts and (2) Item 11 Jam nuts.

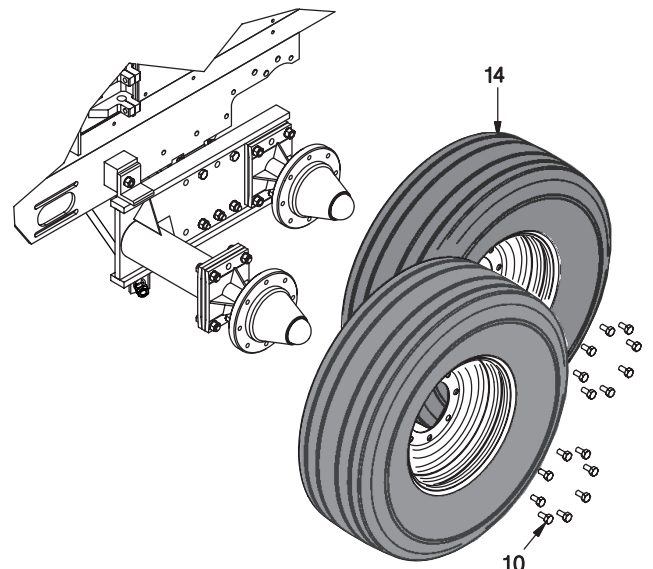


Figure 2-3-5 - Mounting Tires

D. Mount the tires with the valve stem pointing to the inside of the baler (see Figure 2-3-5). Torque all lug bolts as per torque chart on page 2-3-1.

E. Tighten truss rod nuts and jam nuts when tires are on the ground with all of the baler's weight on them.

Pickup Depth Wheel FOP0000162

Ref.	Part Number	Description	Qty.
1	BKT0021956	Bracket	1
2	234665	Washer, Lock 1/2	2
3	200454W	Cap Screw, 1/2 UNC X 1 1/2"	2
4	WHL4103504	Tire Assy P/U Depth Wheel	1
5	224121	Nut, ESNA; 5/8 UNC	1

A. Place (1) Item 1 Bracket on the pickup as shown in Figure 2-3-6. Secure with (2) Item 2 Lock Washers and (2) Item 3 Bolts as shown. Torque all nuts and bolts as per torque chart on page 2-3-1.

B. Mount (1) Item 4 Tire Assembly on the bracket as shown in Figure 2-3-7. Secure with (1) Item 5 ESNA nut as shown. Torque all nuts and bolts as per torque chart on page 2-3-1.

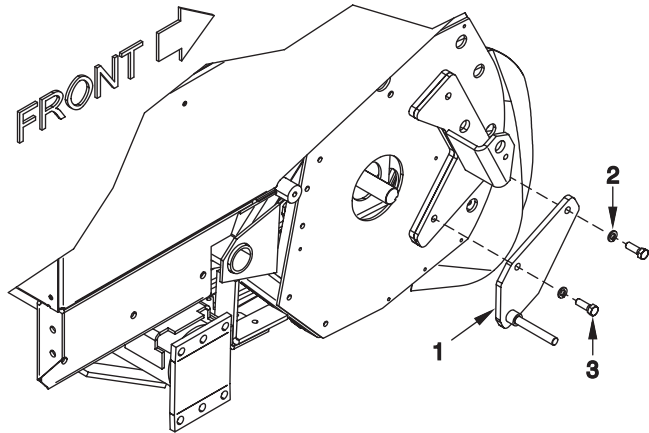


Figure 2-3-6 - Pickup Depth Wheel Bracket

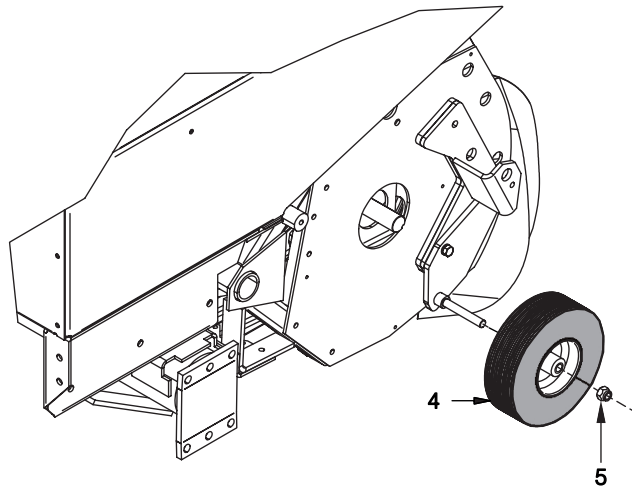


Figure 2-3-7 - Mounting Tire Assembly

Tandem 8-Hole Flotation RH 2 & 3-Tie FOP0000222

Ref.	Part Number	Description	Qty.
1	901620	Tandem Wheel Plate	1
2	F000007636	Spacer Plate	2
3	Y18C-1032	Cap Screw, 5/8 UNF X 2"	4
4	WES0006250	5/8" EXT. Star Washer	15
5	199594W	5/8" Nut UNF	15
7	223587	Nut, ESNA; 1/2" UNC	1
8	239519	Washer, Flat; 1/2"	1
9	221569W	Cap Screw, 1/2 UNC x 1 3/4"	1
10	F000007705	RH Brace	1
11	F000008003	Hub and Spindle 8 Hole	2
11a	F000008001	. Lug Bolts 9/16 UNF	16
12	901467	Tire & Wheel Assy	2
	F000008184	. Wheel F/Flotation Tire	1
	F000008028	. Tire 15 8-PLY Flotation	1
13	R13807958	Cap Screw, 5/8 UNF X 2 1/2"	11

A. (See Figure 2-3-1) Place Item 1, Tandem Wheel Plate on the axle using the mounting holes as shown, and secure with (4) Item 3, Cap Screws. Torque all nuts and bolts as per torque chart on page 2-3-1.

B. (See Figure 2-3-2) Place Item 10, RH Brace on the axle. Place (2) Item 2, Spacer Plates on the tandem plate. Place (2) Item 11, Hub and Spindle assemblies on the tandem plate. Place all bolts, star washers, and nuts so the hub and spindle are secure. Torque all nuts and bolts as per torque chart on page 2-3-1.

C. Mount the tires with the valve stem pointing to the inside of the baler (see Figure 2-3-2). Torque all lug bolts as per torque chart on page 2-3-1.

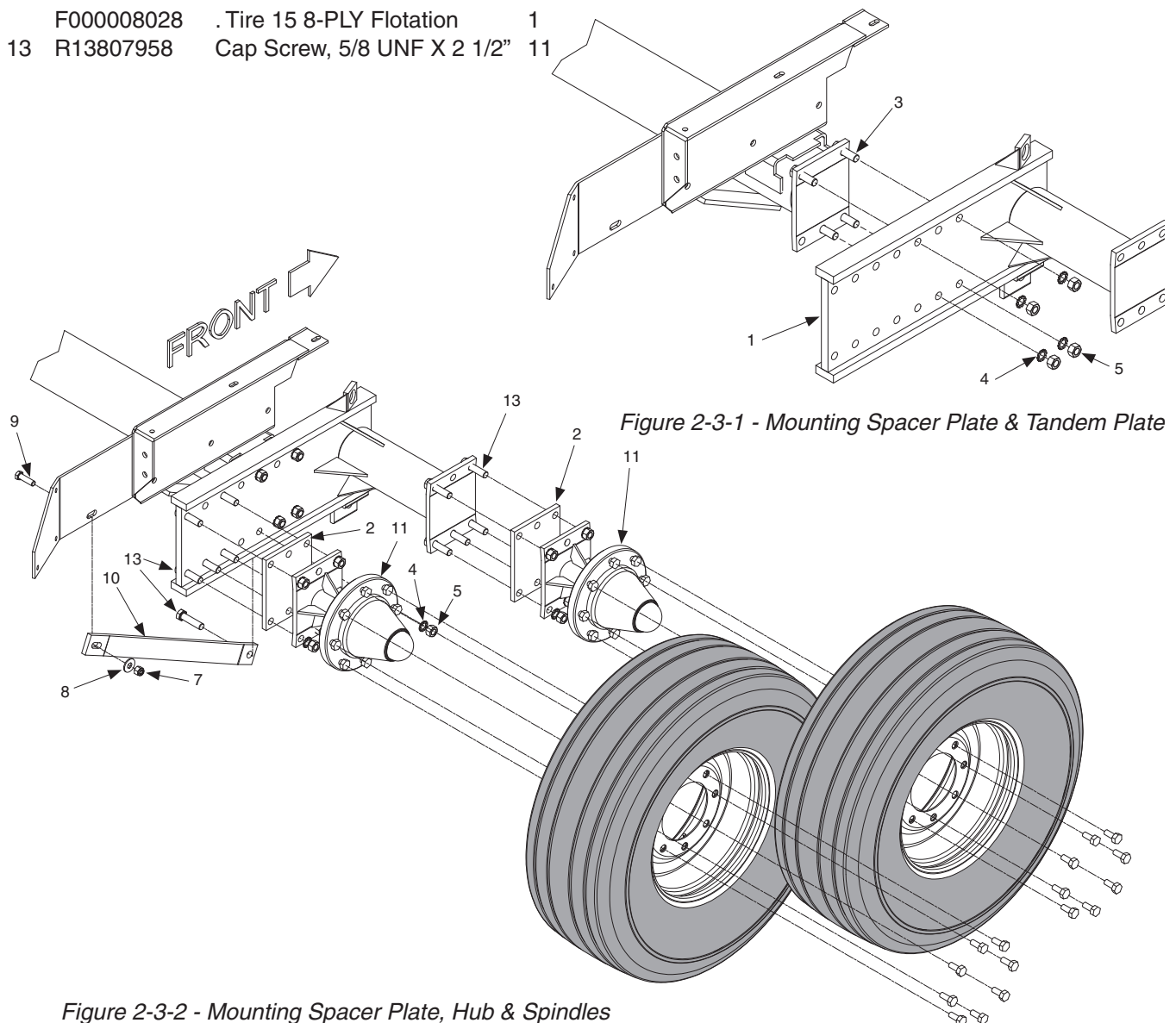


Figure 2-3-1 - Mounting Spacer Plate & Tandem Plate

Figure 2-3-2 - Mounting Spacer Plate, Hub & Spindles

Tandem 8-Hole Highway LH 3-Tie FOP0000248

Ref.	Part Number	Description	Qty.
1	901626	Tandem Wheel Plate	1
2	PLT0026966	Spacer Plate, 3/4"	1
3	901274	Bar, Spacer	1
4	219530	Cap Screw, 5/8 UNF X 3 1/2"	6
5	WES0006250	5/8" Star Washer	16
6	199594W	Nut, 5/8 UNF	16
7	F000007636	Spacer Plate, 1/2"	2
8	R13807958	Cap Screw, 5/8 UNF X 2 1/2"	10
9	F000008003	Hub and Spindle 8 Hole	2
9a	F000008001	. Lug Bolts 9/16 NF	16
10	NMS0007125	Truss Rod Nut	2
11	R13809570	Jam Nut	2
12	RD00708600	Rod	1
13	TIR0000002	Highway Tire & Wheel Assy	2
	WHL0106897	. Wheel F/Highway Tire	1
	TIR7501608	. Highway Tire	1

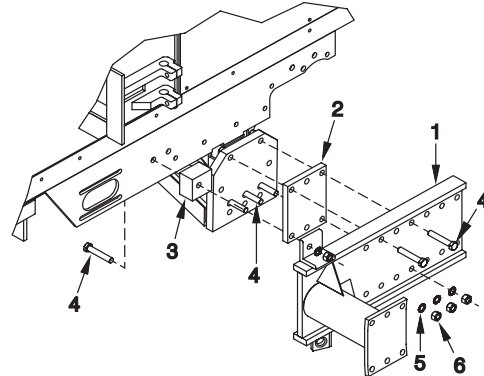


Figure 2-3-3 - Mounting Tandem Plate and Spacers

A. (See Figure 2-3-3) Place (3) Item 4 Bolts through the axle. Place (1) Item 4 Bolt through frame. Place (1) Item 2 Spacer, (1) Item 1 Tandem Plate, and (1) Item 3 Bar Spacer as shown. Place remaining bolts, star washers, and nuts on so the tandem plate and spacer are secure. Torque all nuts and bolts as per torque chart on page 2-3-1.

B. (See Figure 2-3-4) Place (2) Item 7 Spacer Plates on the tandem plate. Place (2) Item 9 Hub and Spindle assemblies as shown. Place all bolts, star washers and nuts so the hub and spindle are secure. Torque all nuts and bolts as per torque chart on page 2-3-1.

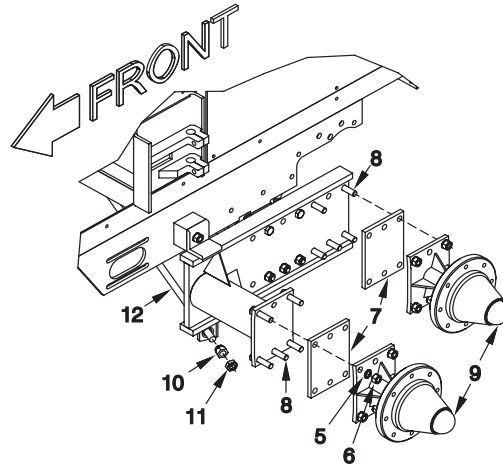


Figure 2-3-4 - Mounting Spacer Plates Hubs & Truss Rod

C. Before mounting the tires and wheels, place (1) Item 12 Truss Rod as shown in Figure 2-3-4. Secure truss rod finger tight with (2) Item 10 Truss Rod Nuts and (2) Item 11 Jam nuts.

D. Mount the tires with the valve stem pointing to the inside of the baler (see Figure 2-3-5). Torque lug bolts as per torque chart on page 2-3-1.

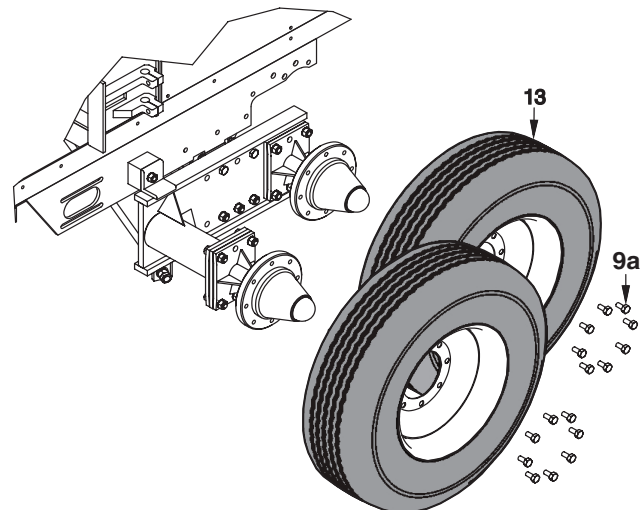


Figure 2-3-5 - Mounting Tires

Single 8-Hole Highway RH 2 & 3-Tie FOP0000249

Ref.	Part Number	Description	Qty.
1	F000007636	Spacer Plate	3
2	Y18C-1032	Cap Screw, 5/8 UNF X 2"	4
3	219530	Cap Screw, 5/8 UNF X 3-1/2"	5
4	F000007756	Plate, RH Channel	1
5	WES0006250	5/8" Star Washer	10
6	199894W	Nut, 5/8 UNF	10
7	F000008003	Hub and Spindle 8 Hole	1
7a	F000008001	. Lug Bolts 9/16 UNF	8
8	R13807958	Cap Screw, 5/8 UNF X 2 1/2"	1
9	F000007705	RH Brace	1
10	221569W	Cap Screw, 1/2 UNC x 1 3/4"	1
11	239519	Washer, Flat; 1/2"	1
12	223587	Nut, ESNA; 1/2" UNC	1
13	TIR0000002	Highway Tire & Wheel Assy	1
	WHL0106897	. Wheel F/Highway Tire	1
	TIR7501608	. Highway Tire	1

A. (See Figure 2-3-1) Place (5) Item 3 Bolts through the mounting channel. Place (3) Item 1 Spacer Plates and 1 Item 7, Hub and Spindle on the mounting channel. Secure the Hub and Spacer Plates to the mounting channel with 5/8" star washers and nuts. Torque all nuts and bolts as per torque chart on page 2-3-1.

B. (See Figure 2-3-2) Place the mounting channel on the axle using (4) Item 2 Bolts. Place Item 9, RH Brace as shown. Torque all nuts and bolts as per torque chart on page 2-3-1.

C. Mount the tire with the valve stem pointing to the inside of the baler. Torque all lug bolts as per torque chart on page 2-3-1.

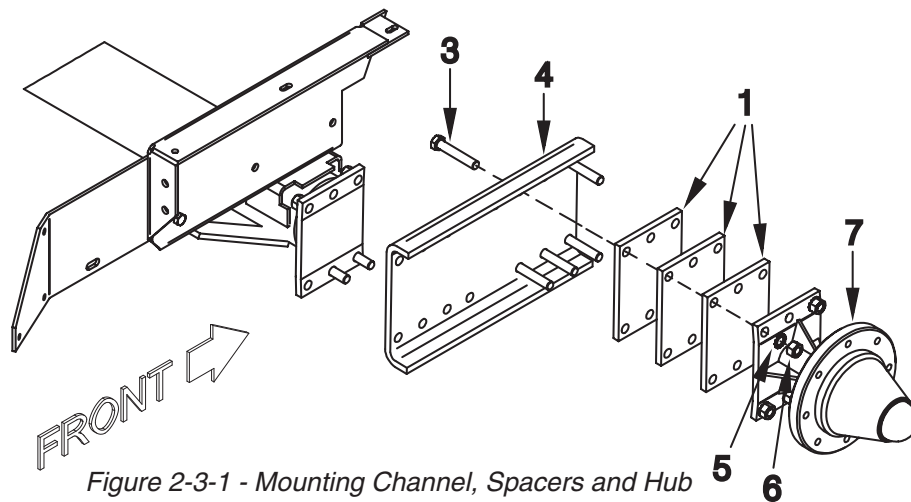


Figure 2-3-1 - Mounting Channel, Spacers and Hub

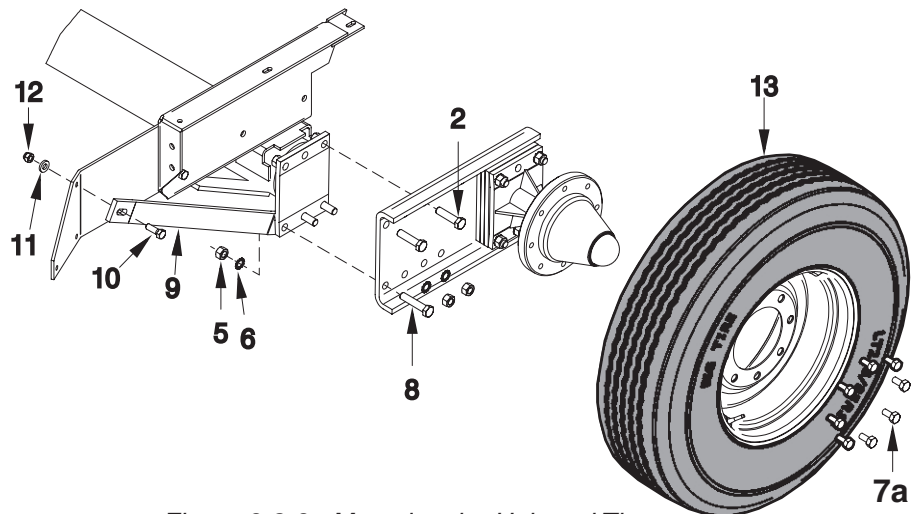


Figure 2-3-2 - Mounting the Hub and Tire

Tandem 8-Hole Highway RH FOP0000250

Ref.	Part Number	Description	Qty.
1	901626	Tandem Wheel Plate	1
2	F000007636	Spacer Plate	2
3	Y18C-1032	Cap Screw, 5/8 UNF X 2"	4
4	WES0006250	5/8" Star Washer	15
5	199594W	Nut, 5/8 UNF	15
6	F000007705	RH Brace	1
7	221569W	Cap Screw, 1/2 UNC X 1 3/4"	1
8	239519	Washer, Flat; 1/2	1
9	223587	Nut, ESNA; 1/2 UNC	1
10	R13807958	Cap Screw, 5/8 UNF X 2 1/2"	1
11	F000008003	Hub and Spindle 8 Hole	2
12	F000008001	. Lug Bolts 9/16 UNF	16
13	TIR0000002	Highway Tire & Wheel Assy	2
	WHL0106897	. Wheel F/Highway Tire	1
	TIR7501608	. Highway Tire	1
14	R13807958	Cap Screw, 5/8 UNF X 2-1/2"	10

A. Place (2) Item 3 Bolts through the axle and (2) through 901626 Tandem Plate as shown in Figure 2-3-1. Use star washers and nuts to secure the tandem plate to the axle. Torque all nuts and bolts as per torque chart on page 2-3-1.

B. (See Figure 2-3-2). Place (2) F000007636 Spacer Plates on the tandem plate. Place (2) F000008003 Hub and Spindle assemblies over Spacer Plates. Place all bolts, star washers and nuts so the hub and spindle are secure. Place (1) F000007705 RH Brace on the axle. Torque all nuts and bolts as per torque chart on page 2-3-1.

C. Mount the tires with the valve stem pointing to the inside of the baler. Torque all lug bolts as per torque chart on page 2-3-1.

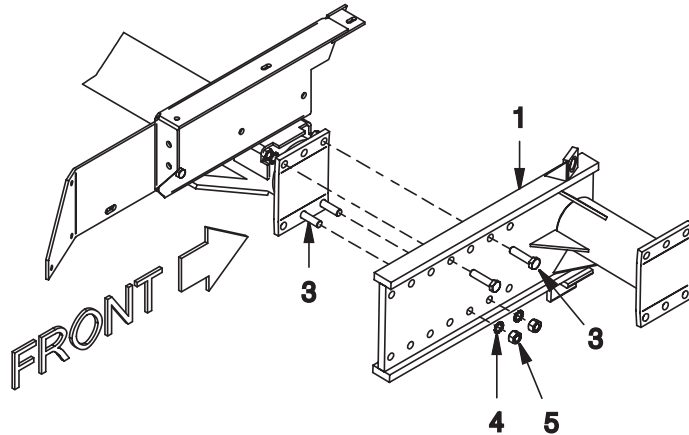


Figure 2-3-1 - Place Spacer and Tandem Wheel Plate

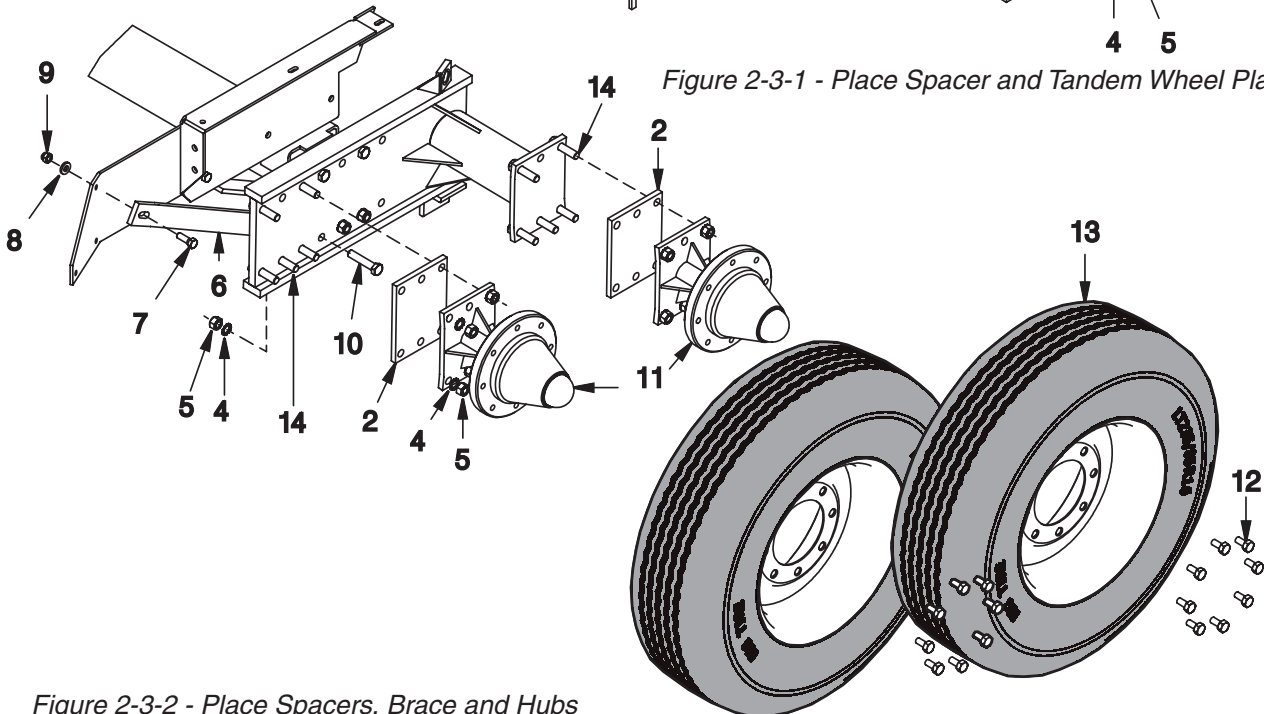


Figure 2-3-2 - Place Spacers, Brace and Hubs

Tandem 8-Hole Highway LH 2-Tie FOP0000252

Ref. Part Number	Description	Qty.
1	901626 Tandem Wheel Plate	1
2	901675 Spacer	1
3	R13807958 Cap Screw, 5/8 UNF X 2-1/2"	11
4	Y18C-1032 Cap Screw, 5/8 UNF X 2"	5
5	WES0006250 5/8" Star Washer	16
6	199594W Nut, 5/8 UNF	16
7	F000007636 Spacer Plate	2
8	F000008003 Hub and Spindle 8 Hole	2
8a	F000008001 . Lug Bolts 9/16 UNF	16
9	RD00708601 Truss Rod	1
10	NMS0007125 Truss Rod Nut	2
11	R13809570 Jam Nut	2
12	TIR0000002 Highway Tire & Wheel Assy	2
	WHL0106897 . Wheel F/Highway Tire	1
	TIR7501608 . Highway Tire	1

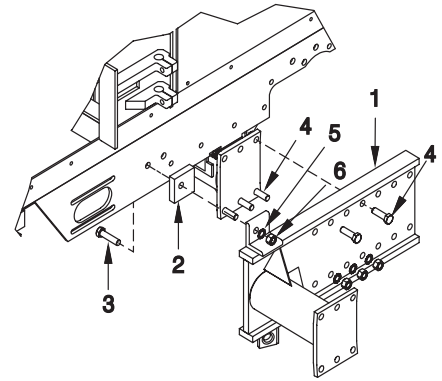


Figure 2-3-3 - Mounting Tandem Wheel Plate

A. (See Figure 2-3-3) Place (3) Item 4 Bolts through the axle. Place (1) Item 3 bolt through frame. Place (1) Item 1 Tandem Plate and (1) Item 2 Spacer as shown. Place the rest of the bolts, star washers and nuts so the tandem plate and spacer are secure. Torque all nuts and bolts as per torque chart on page 2-3-1.

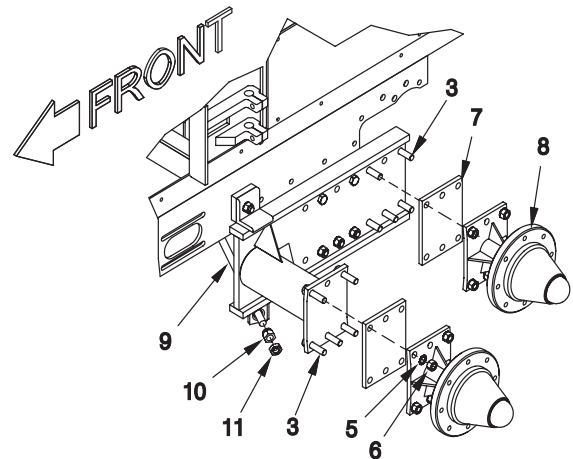


Figure 2-3-4 - Mounting Spacer Plates Hubs & Truss Rod

B. (See Figure 2-3-4) Place (2) Item 7 Spacer Plates on the tandem plate. Place (2) Item 8 Hub and Spindle assemblies as shown. Place all bolts, star washers and nuts so the hub and spindle are secure. Torque all nuts and bolts as per torque chart on page 2-3-1.

C. Before mounting the tires and wheels, place (1) Item 9 Truss Rod as shown in Figure 2-3-4. Secure truss rod finger tight with (2) Item 10 Truss Rod Nuts and (2) Item 11 Jam nuts.

D. Mount the tires with the valve stem pointing to the inside of the baler (see Figure 2-3-5). Torque lug bolts as per torque chart on page 2-3-1.

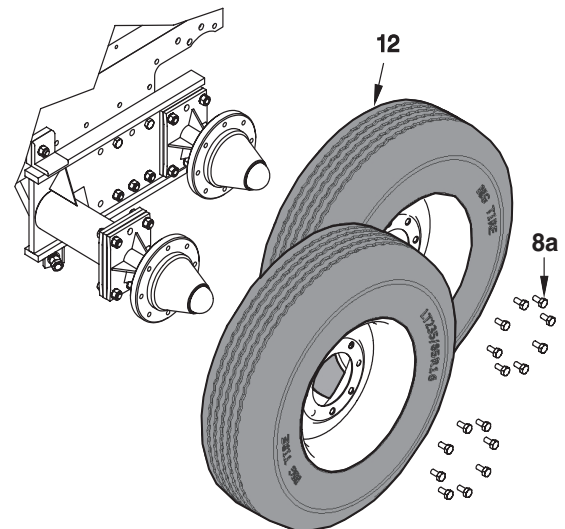
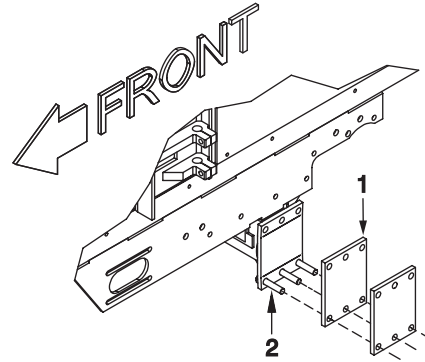


Figure 2-3-5 - Mount Tires

E. Tighten truss rod nuts and jam nuts when tires are on the ground with all of the baler's weight on them.

Tire & Wheel 8-Hole Highway LH 2-Tie FOP0000253

Ref. Part Number	Description	Qty.
1	F000007636 1/2" Spacer Plate	2
2	R13806355 Cap Screw, 5/8 UNC x 3"	5
3	WES0006250 5/8" Star Washer	5
4	199594W Nut, 5/8" UNF	5
5	F000008003 Hub and Spindle 8 Hole	1
6	F000008001 . Lug Bolt 9/16 UNF	8
7	TIR0000002 Highway Tire & Wheel Assy	1
	WHL0106897 . Wheel F/Highway Tire	1
	TIR7501608 . Highway Tire	1



A. (See Figure 2-3-3) Place (3) Item 2 Bolts on axle. Place (2) Item 1 Spacer Plates on axle.

Figure 2-3-3 - Mounting Spacers

B. Place (2) Item 2 Bolts on hub and spindle and secure to the axle. Torque all nuts and bolts as per torque chart on page 2-3-1.

C. Mount the tire with the valve stem pointing to the inside of the baler. Torque lug bolts as per torque chart on page 2-3-1.

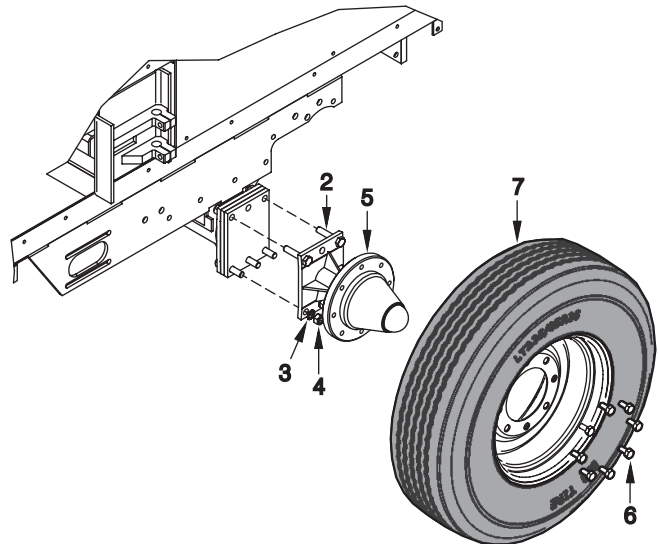


Figure 2-3-4 - Mounting Hub, Spindle and Tire

Flotation Tire & Wheel 120" Tracking LH 3-Tie FOP0000257

Ref. Part Number	Description	Qty.
1	EXT0026922 Axle Extension Assembly	1
2	R13807958 Cap Screw, 5/8 UNC X 2-1/2"	2
3	R13806355 Cap Screw, 5/8 UNC x 3"	5
4	WES0006250 5/8" Star Washer	10
5	199594W Nut, 5/8" UNF	7
6	230831 Cap Screw, 5/8 UNF X 1 1/2	3
7	SPN0287640 Hub and Spindle	1
8	F000006763 . Lug Nut 5/8 UNF	8
9	WHL0000002 Tire and Wheel	1
	TIR0165161 . Tire	1
	WHL0108191 . Wheel	1

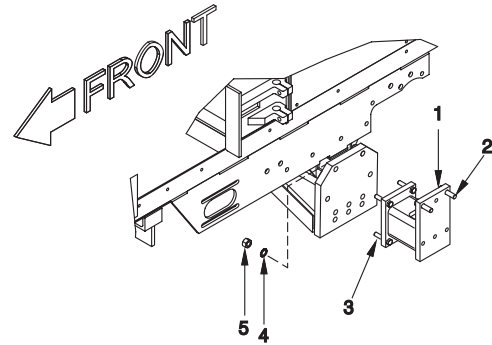


Figure 2-3-3 - Mounting Axle Extension

A. Place (5) Item 3 Bolts through Axle Extension and secure to axle using (5) Item 4 star washers and Item 5 Nuts as shown in Figure 2-3-3. Torque all nuts and bolts as per torque chart on page 2-3-1.

B. (See Figure 2-3-4) Place (2) Item 2 Bolts through the extension assembly and spindle. Place (3) Item 6 Bolts and (3) Item 4 star washers on the Hub and Spindle and thread the bolts into the axle extension. Secure with nuts and star washers. Torque all nuts and bolts as per torque chart on page 2-3-1.

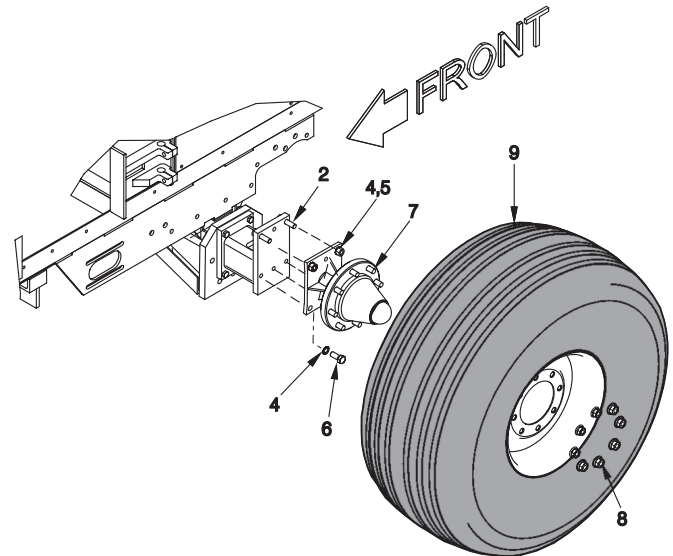


Figure 2-3-4 - Mounting Hub, Spindle and Tire

C. Mount the tire with the valve stem pointing to the inside of the baler. Torque lug nuts as per torque chart on page 2-3-1.

Tire & Wheel Single Highway RH (To Go With Walking Beam) FOP0908188

Ref.	Part Number	Description	Qty.
1	F000007636	Spacer Plate	1
2	R13807958	Cap Screw, 5/8 UNF x 2-1/2"	10
3	MNT0030914	Wheel Extension	1
4	WES0006250	5/8" Star Washer	10
5	199594W	Nut, 5/8 UNF	10
6	F000008003	Hub and Spindle 8 Hole	1
6a	F000008001	. Lug Bolts 9/16 UNF	8
8	F000007705	RH Brace	1
9	221569W	Cap Screw, 1/2 UNC x 1 3/4"	1
10	239519	Washer, Flat; 1/2"	1
11	223587	Nut, ESNA; 1/2" UNC	1
12	TIR0000002	Highway Tire & Wheel Assy	1
	WHL0106897	. Wheel F/Highway Tire	1
	TIR7501608	. Highway Tire	1

NOTICE

Spindles may be mounted at two different heights. Make Certain that both the right and left side spindles are mounted at the same height. Use the lower mounting position when using the baler in beds.

A. (See Figure 2-3-1) Place (2) Item 2 Bolts through the axle. Place (5) Item 2 Bolts onto Item 3, Wheel Extension. Place (1) Item 1, Spacer Plate and (1) Item 6, Hub on to the wheel extension. Torque all nuts and bolts as per torque chart on page 2-3-1.

B. (See Figure 2-3-2) Place the Wheel Extension on to the axle as shown, securing with the Item 2 bolts. Place (1) Item 8 RH Brace as shown. Torque all nuts and bolts as per torque chart on page 2-3-1.

C. Mount the tire with the valve stem pointing to the inside of the baler. Torque all lug bolts as per torque chart on page 2-3-1.

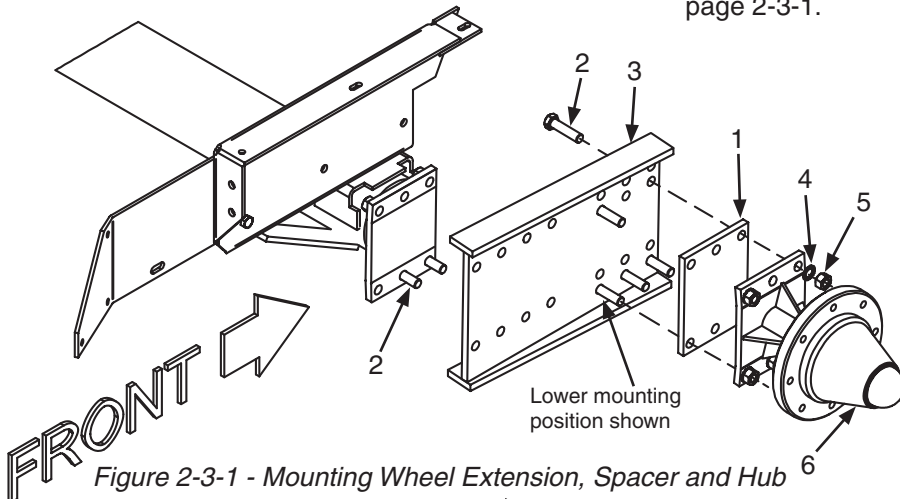


Figure 2-3-1 - Mounting Wheel Extension, Spacer and Hub

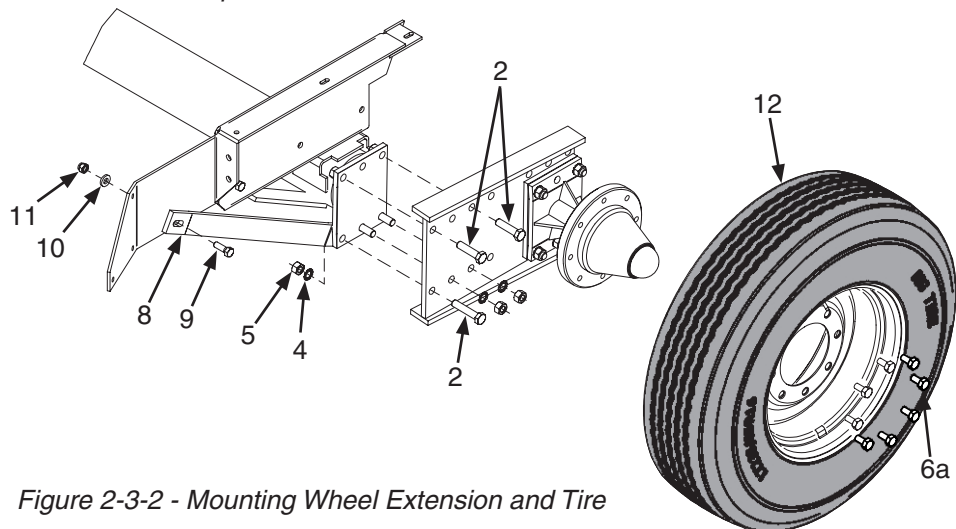


Figure 2-3-2 - Mounting Wheel Extension and Tire

Tire & Wheels Walking Beam LH FOP0000259

Ref.	Part Number	Description	Qty.
1	SPN1024150	Hub/Spindle Walking Beam	1
2	R13806355	Cap Screw	5
3	199594W	Nut	17
4	WES0006250	Star Washer	17
5	STD1024150	RH Stud	10
6	PLT0029905	PL, Walking Beam	1
7	R13807958	Cap Screw	12
8	SPN0287640	Hub/Spindle Assy	2
8a	F000006763	. Lug Nut	16
9	200608	Washer, Lock	10
10	221717W	Nut	10
11	TIR0000002	Tire and Wheel, Highway	2
	WHL0106897	. Wheel F/Highway Tire	1
	TIR7501608	. Highway Tire	1

Spindle Item 1 can be rotated to mount high or low. Make certain that the right and left spindle heights match.

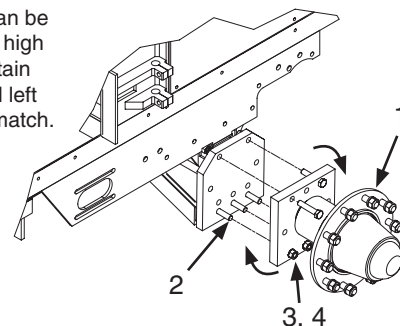


Figure 2-3-3 - Mounting Hub to Axle

NOTICE

Spindle Item 1 may be mounted at two different heights. Make certain that it matches the height of the RH spindle! The lower mounting position is usually used only when baling in beds.

D. (See Figure 2-3-3) Place (7) Item 2 Bolts through the axle and spindle. Place (1) Item 1 Spindle onto the axle. Torque all nuts and bolts as per torque chart on page 2-3-1.

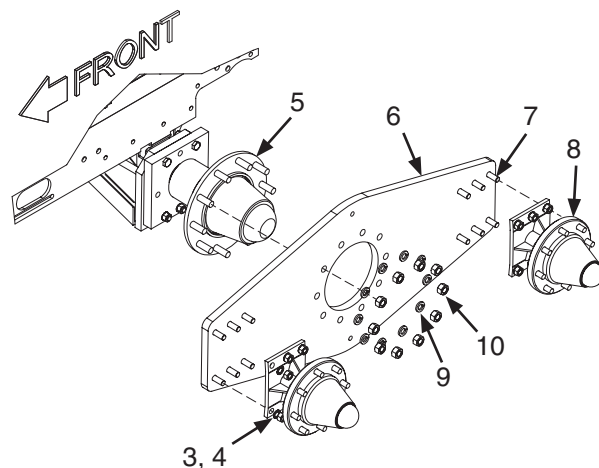


Figure 2-3-4 - Mounting Walking Beam Plate

E. (See Figure 2-3-4) Place (1) Item 6 Walking Beam Plate on the hub. Place (10) Item 9 Lock Washers and Item 10 Nuts on the spindle. Place (12) Item 7 Bolts through the Walking Beam Plate, then place (2) Item 8, Hub & Spindles onto the Walking Beam. Torque all nuts and bolts as per torque chart on page 2-3-1.

F. Mount the tires with the valve stem pointing to the inside of the baler. Torque all lug nuts as per torque chart on page 2-3-1.

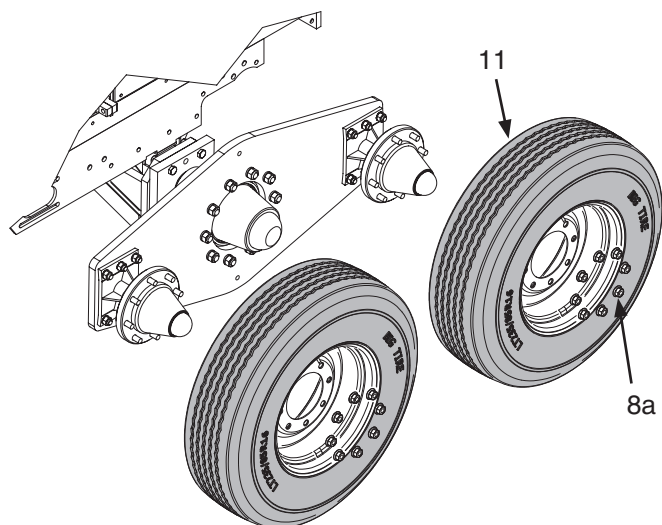


Figure 2-3-5 - Mounting Tires

Tire & Wheels Walking Beam LH (Gearbox Baler Only) FOP0906436

Ref.	Part Number	Description	Qty.
1	SPN1024150	Hub/Spindle Walking Beam	1
1a	905186	. Studs	10
2	199594W	Hex Nut	17
3	PLT0029905	Plate, Walking Beam	1
4	SPN0287640	Spindle & Hub Assembly	2
4a	F000006763	. Lug Nut 5/8 NF	16
5	TIR0000002	Tire & Wheel Assembly	2
	WHL0106897	. Wheel F/Highway Tire	1
	RIT7501608	. Highway Tire	1
6	R13807958	Capscrew	12
7	221641W	Capscrew	5
8	221717W	Hex Nut	10
9	200608	Lockwasher	10
10	WES0006250	Star Washer	17
11	906435	Plate, Spacer	1

Spindle Item 1 can be rotated to mount high or low. Make certain that the right and left spindle heights match.

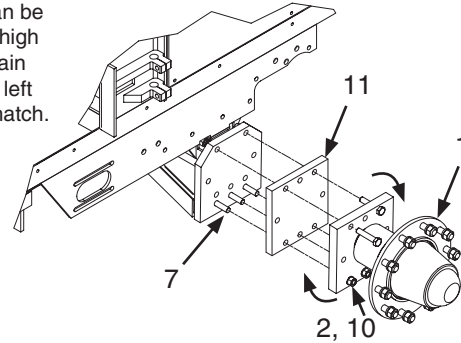


Figure 2-3-3 - Mounting Hub to Axle

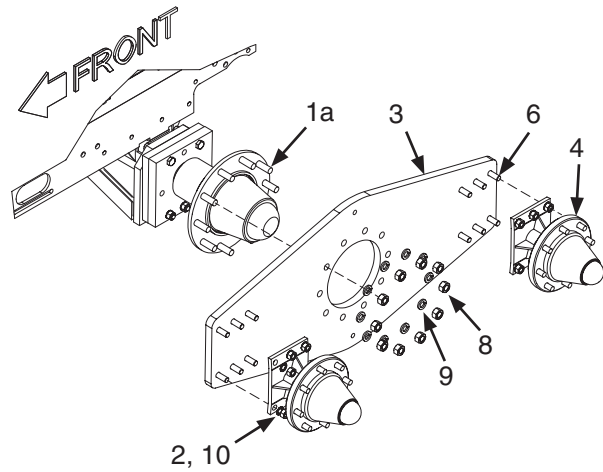


Figure 2-3-4 - Mounting Walking Beam Plate

D. (See Figure 2-3-3) Place (5) Item 7 Bolts through the axle and Item 11 spacer plate. Place (1) Item 1 Spindle onto the axle. Place nuts (Item 2) and washers (Item 11) on bolts and torque and tighten as per torque chart on page 2-3-1.

E. (See Figure 2-3-4) Place (1) Item 3 Walking Beam Plate on the hub. Place (10) Item 9 Lock Washers and Item 8 Nuts on the spindle. Place (12) Item 6 Bolts through the Walking Beam Plate, then place (2) Item 4, Hub & Spindles onto the Walking Beam. Torque all nuts and bolts as per torque chart on page 2-3-1.

F. Mount the tires with the valve stem pointing to the inside of the baler. Torque all lug nuts as per torque chart on page 2-3-1.

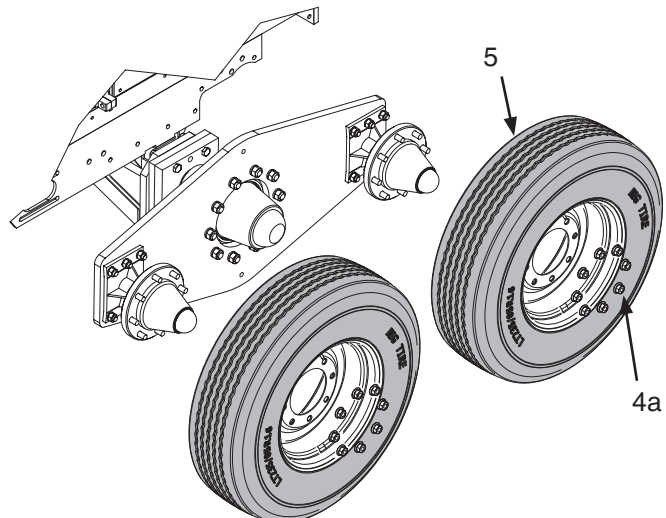


Figure 2-3-5 - Mounting Tires

NOTICE

Spindle Item 1 may be mounted at two different heights. Make certain that it matches the height of the RH spindle! The lower mounting position is usually used only when bailing in beds.

Hydro PTO Tandem Highway LH 3-Tie FOP0000262

Ref.	Part Number	Description	Qty.
1	F000008182	Extension	1
2	SPC0031139	Spacer	1
3	Y18C-1032	Cap Screw, 5/8 UNF X 2"	12
4	199594W	Nut, 5/8 UNF	28
5	WES0006250	5/8" EXT. Star Washer	28
6	R13807958	Cap Screw, 5/8 UNF X 2 1/2"	10
7	SUP0031138	Channel	1
8	F000007636	Spacer Plate	2
9	901626	Tandem Wheel Plate	1
10	221641W	Cap Screw 5/8 UNF X 4"	4
11	221637W	Cap Screw, 5/8 UNF X 3 1/4"	2
12	F000008003	Hub/Spindle Assy	2
13	F000008001	. Lug Bolt 9/16 UNF	16
14	TIR0000002	Tire and Wheel Highway	2
	WHL0106897	. Wheel F/Highway Tire	1
	TIR7501608	. Highway Tire	1
15	R13806873	5/8" HD Washer	6

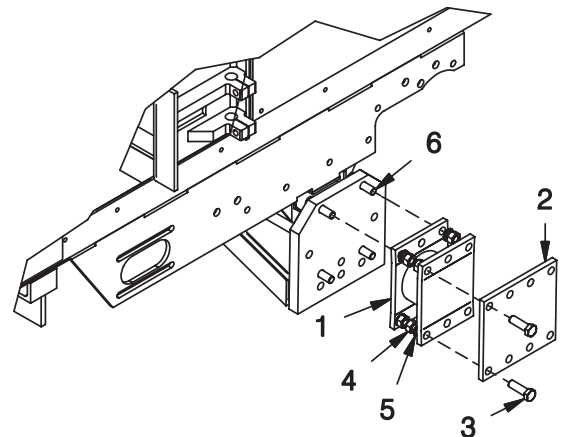


Figure 2-3-3 - Mounting Extension and Spacer

A. (See Figure 2-3-3) Place (4) Item 6 bolts through the Axle. Place (1) Item 1 Extension onto the axel. Place (1) Item 2 Spacer onto the extension as shown. Torque all nuts and bolts as per torque chart on page 2-3-1.

B. Place (1) Item 7 Channel onto the baler frame as shown in Figure 2-3-5. Torque all nuts and bolts as per torque chart on page 2-3-1.

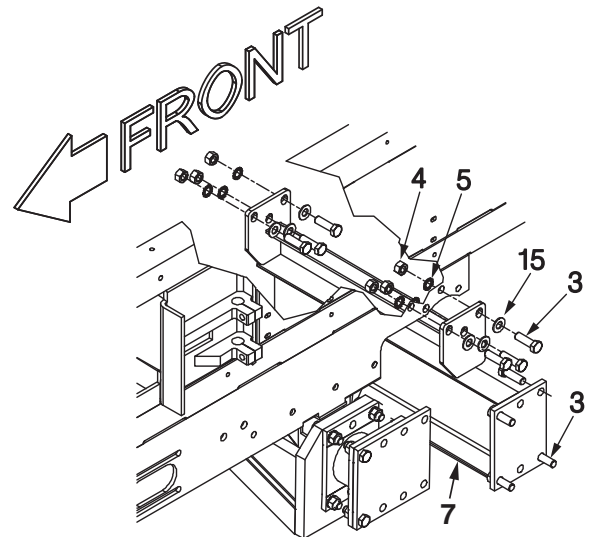
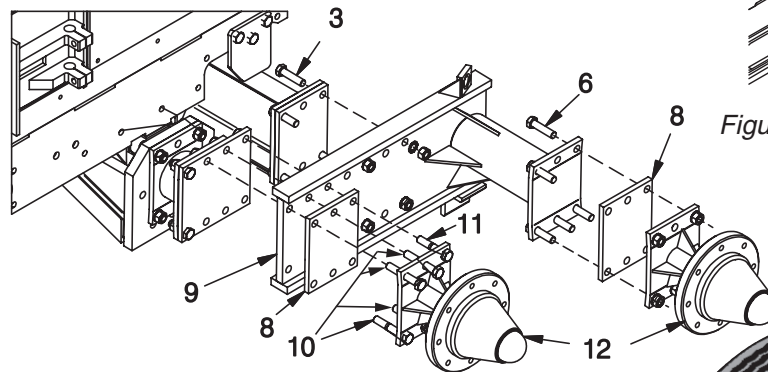


Figure 2-3-4 - Mounting Channel



C. (See Figure 2-3-5) Place (1) Item 9 Tandem Wheel Plate as shown. Place (2) Item 8 Spacer Plates and (2) Item 12 Hub/Spindle Assys on to the Tandem Wheel Plate. Torque all nuts and bolts as per torque chart on page 2-3-1.

D. Mount the tires with the valve stem pointing to the inside of the baler. Torque lug bolts as per torque chart on page 2-3-1.

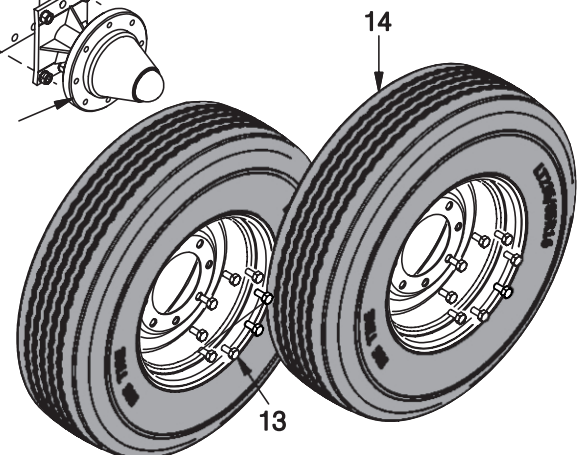


Figure 2-3-5 - Mounting Tandem Wheel Plate Hubs and Tires

Single 8-Hole Flotation RH 2 & 3-Tie FOP0905142

Ref.	Part Number	Description	Qty.
1	F000007636	Spacer Plate	1
2	Y18C-1032	Cap Screw, 5/8 UNF X 2"	4
3	R13807958	Cap Screw, 5/8 UNF X 2 1/2"	6
4	MNT0030914	Extension Plate, R.H. Wheel	1
5	WES0006250	5/8" Star Washer	10
6	199594W	Nut, 5/8 UNF	10
7	F000008003	Hub and Spindle 8 Hole	1
7a	F000008001	. Lug Bolts 9/16 NF	8
9	F000007705	RH Brace	1
10	221569W	Cap Screw, 1/2 UNC x 1 3/4"	1
11	239519	Washer, Flat; 1/2"	1
12	223587	Nut, ESNA; 1/2" UNC	1
13	901467	Flotation Tire & Wheel	1
	F000008184	. Wheel F/Flotation Tire	1
	F000008028	. Tire 15" 8-PLY Flotation	1

A. (See Figure 2-3-1) Place (5) Item 3 Bolts through (1) Item 4 Extension Plate. Place (1) Item 1 Spacer Plate and (1) Item 7 Hub and Spindle on the Extension Plate. Secure the hub and spacer plates to the Extension Plate with 5/8" star washers and nuts. Torque all nuts and bolts as per torque chart on page 2-3-1.

B. (See Figure 2-3-1) Place the Extension Plate on the axle using (4) Item 2 Bolts and (1) Item 3 bolt. Place Item 9 RH Brace as shown, using (1) Item 10 Bolt. Secure the Extension Plate to the axle with 5/8" star washers and nuts. Torque all nuts and bolts as per torque chart on page 2-3-1.

C. Mount the tire with the valve stem pointing to the inside of the baler (see page 2-3-2). Torque all nuts and bolts as per torque chart on page 2-3-1.

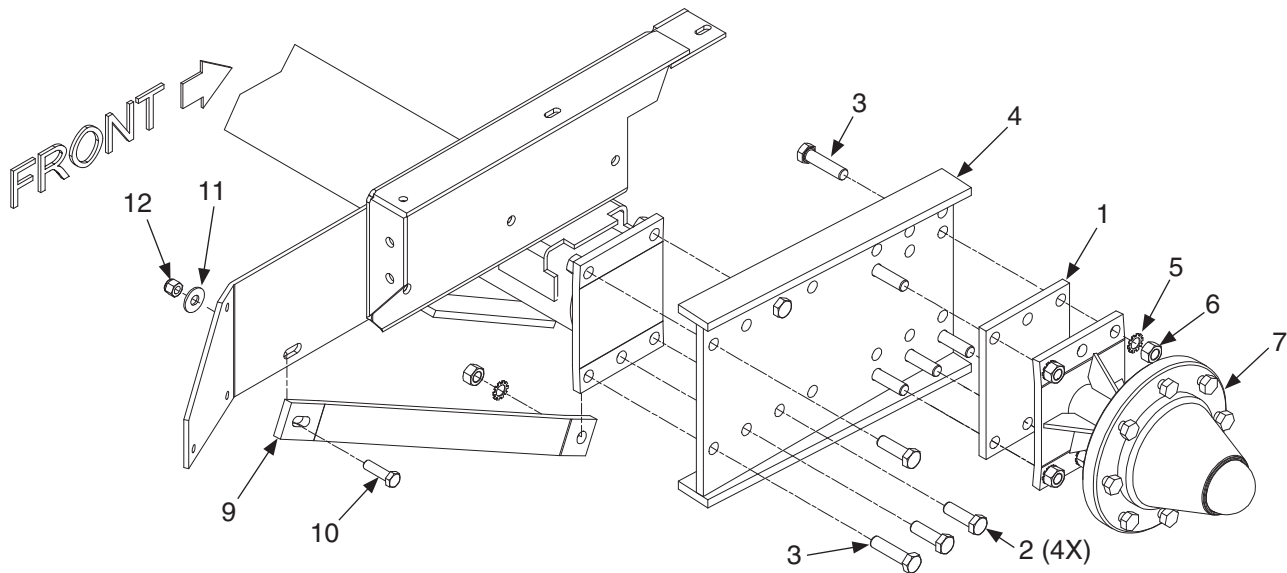


Figure 2-3-1 - Mounting Plate, Brace, Spacer's & Hub

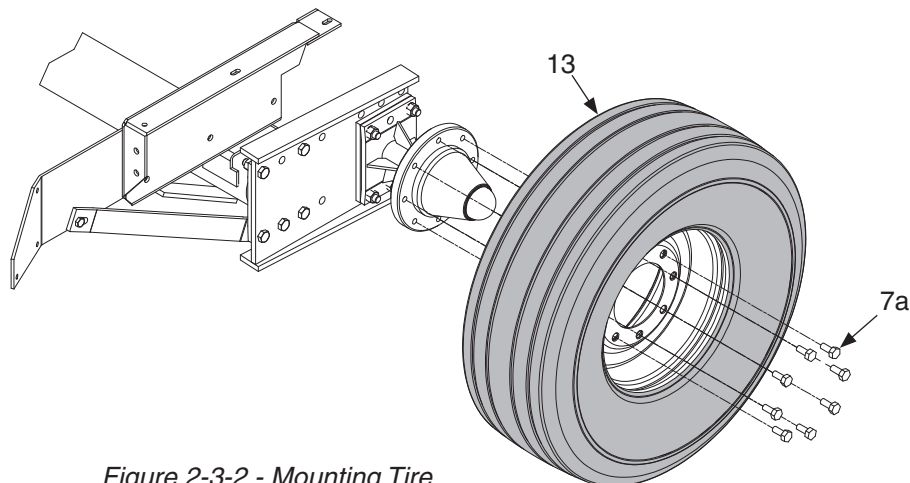


Figure 2-3-2 - Mounting Tire

Hydro Single Flotation LH 2 & 3-Tie FOP0905262

Ref.	Part Number	Description	Qty.	
1	SUP0031138	Channel	1	<p>A. Place (1) Item 3 Extension onto the axle using (5) Item 9 bolts. Place (1) Item 1 Channel onto the baler frame as shown in Figure 2-3-3. Torque all nuts and bolts as per torque chart on page 2-3-1.</p> <p>B. Place (1) Item 2 Wheel Plate as shown using (6) Item 8 bolts. Place (1) Item 4 Axle Extension onto the Wheel Plate using (4) Item 10 bolts. Torque all nuts and bolts as per torque chart on page 2-3-1.</p> <p>C. Place (1) Item 5 Hub/Spindle Assys on to the Axle Extension as shown using (3) Item 9 bolts and (3) Item 7 bolts. Torque all nuts and bolts as per torque chart on page 2-3-1.</p> <p>D. Mount the tire with the valve stem pointing to the inside of the baler. Torque all lug nuts as per torque chart on page 2-3-1.</p>
2	F000007756	Wheel Plate	1	
3	F000008182	Extension	1	
4	905248	Axle Extension	1	
5	SPN0287640	Spindle & Hub Assembly	1	
5a	F000006763	. Lug Nut 5/8 UNF	8	
6	WHL0000002	Tire & Wheel Assembly	1	
	TIR0165161	. Tire	1	
	WHL0108191	. Wheel	1	
7	230831	Capscrew, 5/8 UNF x 1.5"	3	
8	Y18C-1032	Capscrew, 5/8 UNF x 2'	12	
9	R13807958	Capscrew, 5/8 UNF x 2.5"	8	
10	R13806355	Capscrew, 5/8 UNF x 3"	4	
11	221775W	Hce-552 Washer 5/8	6	
12	WES0006250	5/8 Ext. Star Washer	27	
13	199594W	Hex Nut, 5/8 UNF	24	

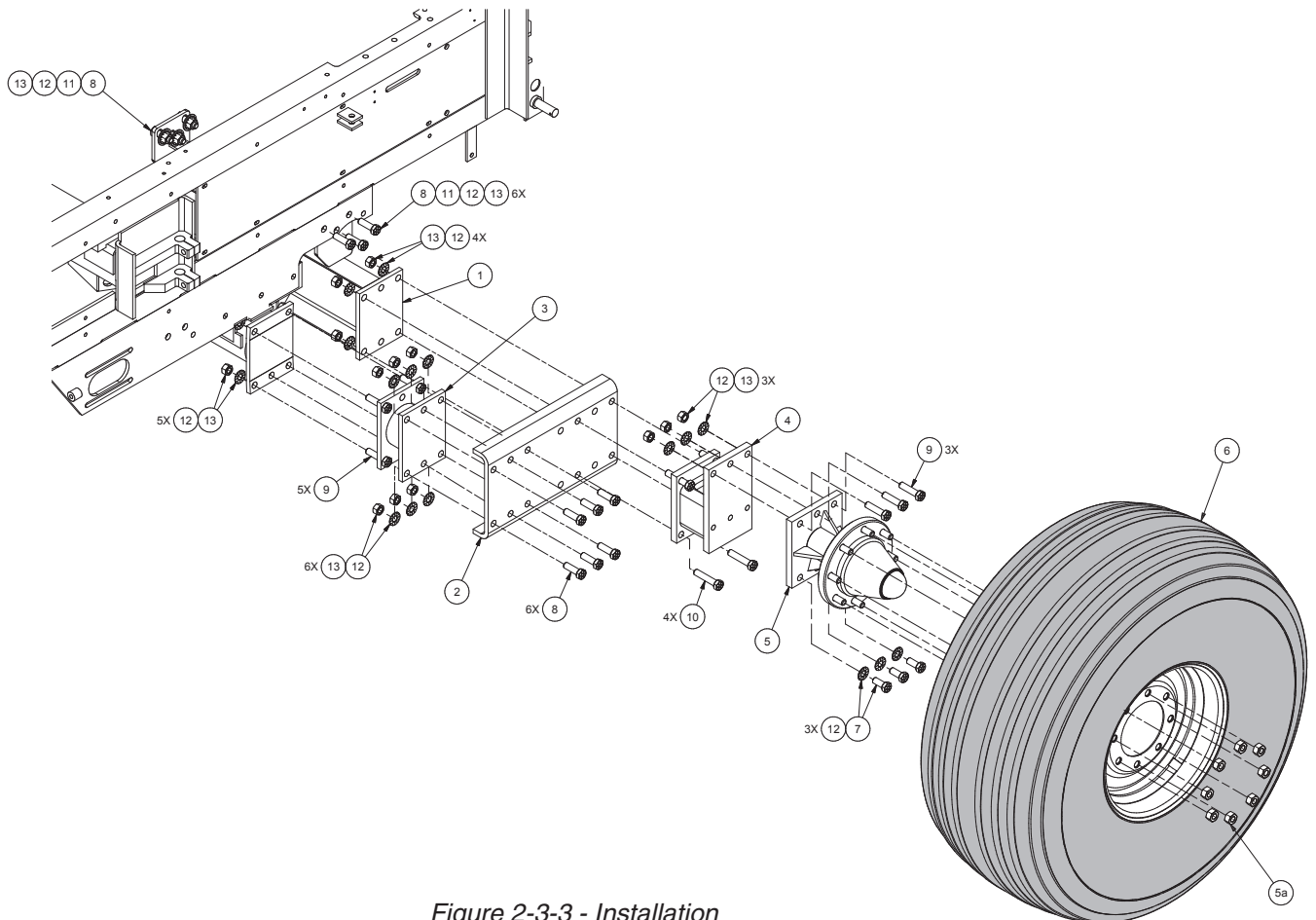


Figure 2-3-3 - Installation



To find a dealer in your area,
Call: 503-625-2560,
Fax: 503-625-7269, or

Visit our website: <http://www.alliedsystems.com>

Allied Systems
COMPANY

89-054 07/2014
Printed in USA