


Hydraulic Tank Replacement Instructions for 280/285 baler

The following procedure outlines the methods for removing tank mount brackets and replacing it with tank mount 902265. Please follow instructions below.

	<p>WARNING SHUT OFF ENGINE BEFORE ADJUSTING, LUBRICATING, CLEANING OR SERVICING THE BALER.</p>
---	---

Note: Check packing list on page 6 to make sure you received all the parts that are required before starting.

Tools you will need:

1. 1 1/4" wrench
2. 7/8" wrench
3. 11/16" wrench
4. 1/2" wrench
5. 9/16" wrench
6. 13/32 drill bit if holes are required. See page 3

Step 1.

Drain Hydraulic Reservoir. Slightly loosen hose fitting (A) (see Figure 1) on left side of tank. Loosen hose end (B)(see Figure 1). Then rotate the hose to the left side of the baler and drain the oil from the reservoir (DO NOT reuse this oil). Cap and plug fittings on the gear and the tank when done.

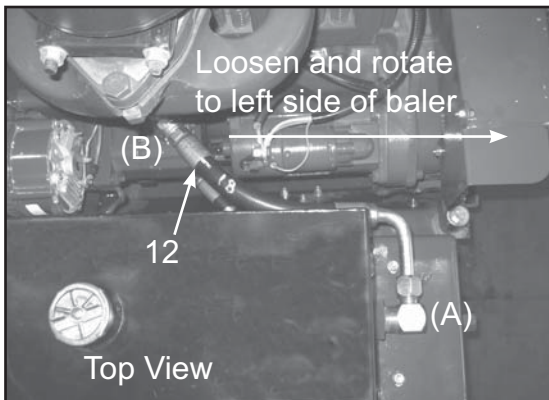


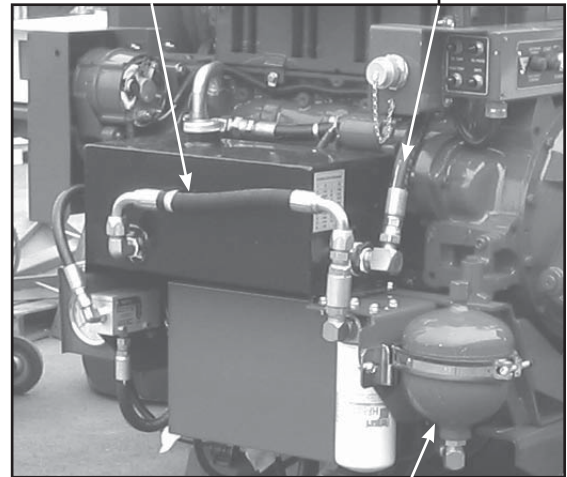
Figure 1 - Empty Tank

Step 2.

A. Remove tank to filter hose (see Figure 2). Plug hose ends and cap fittings to keep contaminants from entering the system. Set hose off to the side. Remove the gear pump to tank hose (see Figure 1) from the tank and plug the hose end and cap the fitting on the tank to keep contaminants from entering the system.

B. Remove hydraulic tank and set off to the side. Remove hose from accumulator (see Figure 2). Plug and cap hoses.

Remove gear box to tank hose
Remove tank to filter hose



Accumulator

Figure 2 - Removing Hoses

Step 3.

Remove the 2 hoses on the pressure filter and the pressure gauge hose. Remove hose connected to the back of the hydraulic filter. Plug hose ends and cap fittings on Pressure Filter (see Figure 3).

Remove Hoses From Pressure Filter

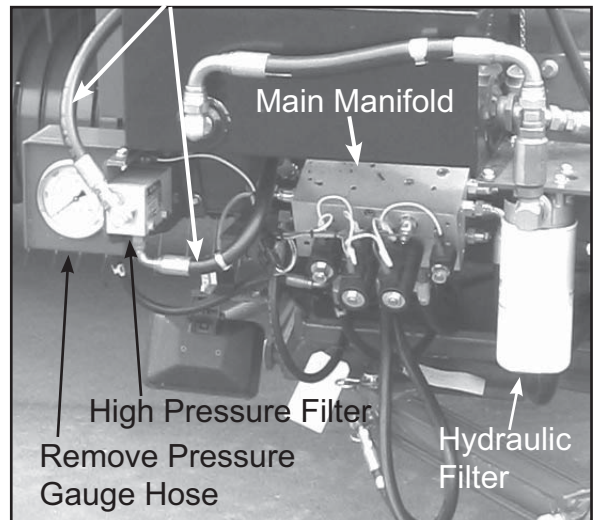


Figure 3 - Removing Hoses

Step 4.

Remove hydraulic tanks mounts and all components below. Retain reference numbers 26,27,28,29,30 for new tank mount installation

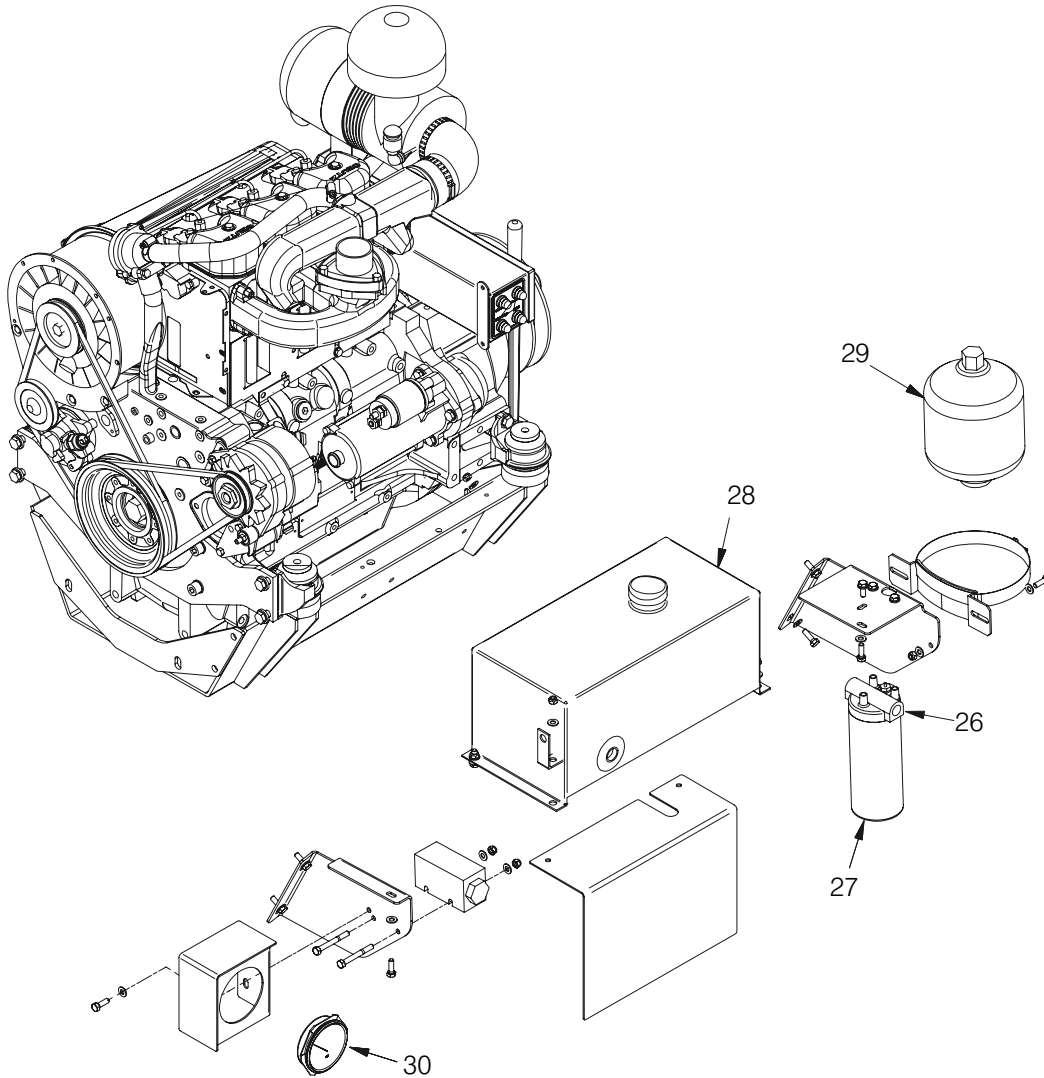


Figure 4 - Remove old tank mount

Step 5.

Check to make sure there are holes for the new tank mount. If so, proceed to Step 6. If not, follow instructions below.

Drill two 13/32" holes where indicated in Figure 5.

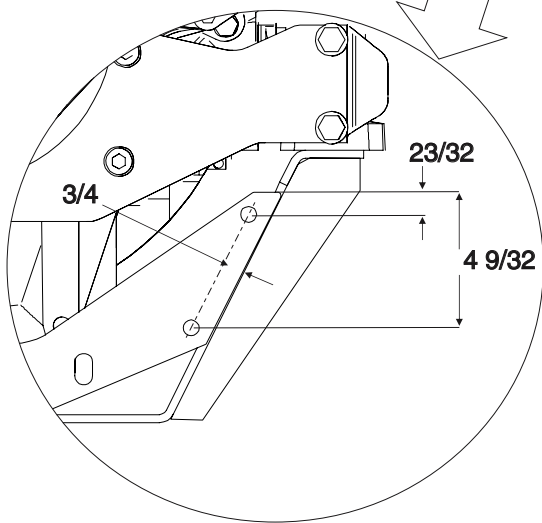
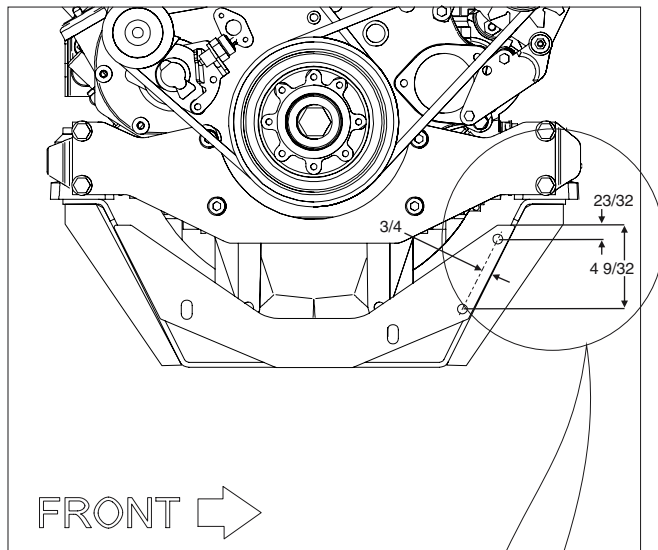


Figure 5 - Inspect and drill holes if needed

Step 6.

Place all new parts (see Figure 6).

A. Secure brackets 2 and 3 to tank mount (see page 6 for packing list).

B. Connect tank mount (902265) to belly pan and torque bolts to 35 ft-lbs.

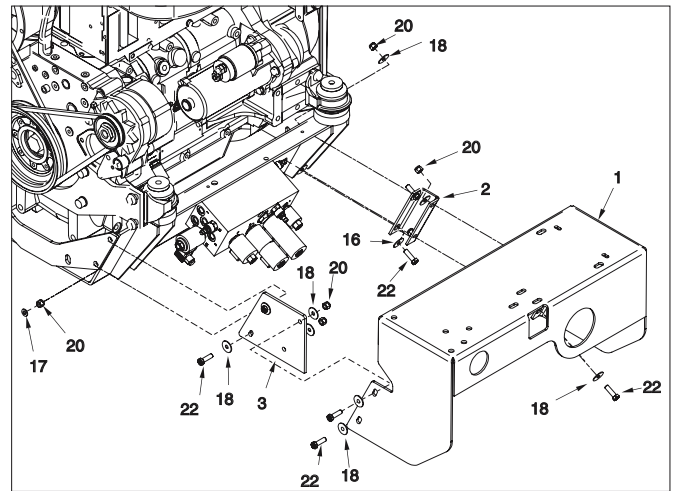
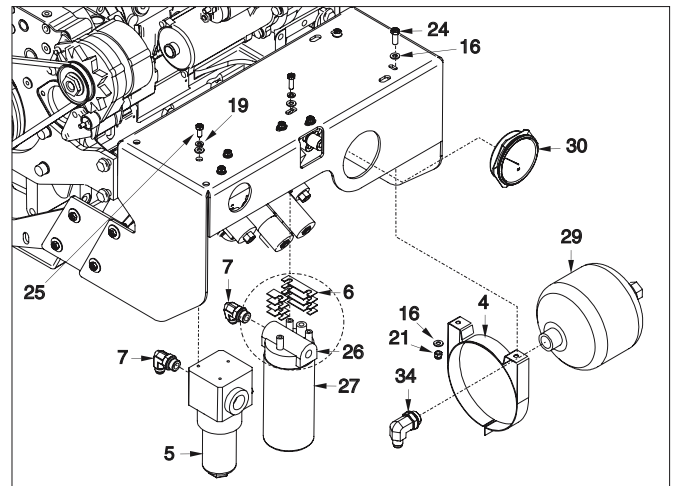


Figure 6 - Instal Tank Mount

Step 7.

Connect parts below to the tank mount (see Figure 7).



Cut shim in half for single screw side of filter

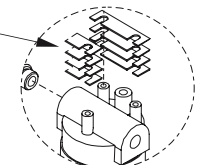


Figure 7 - Install Components

Step 8.

Connect hose (10) 253117, 45° elbow end of hose to the back of the high pressure filter (see Figure 8). Connect the other end to the Gear Pump (see Figure 9).

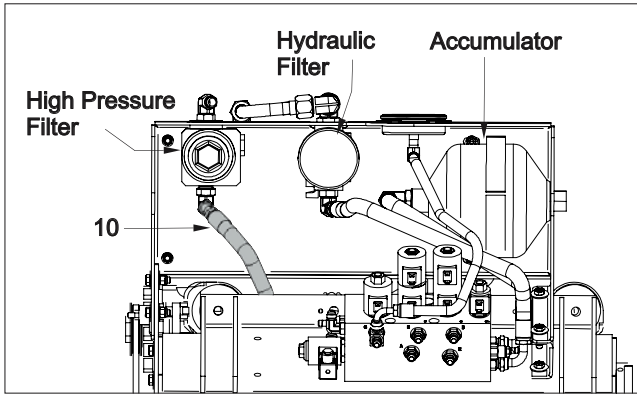


Figure 8 - Install High Pressure Hose

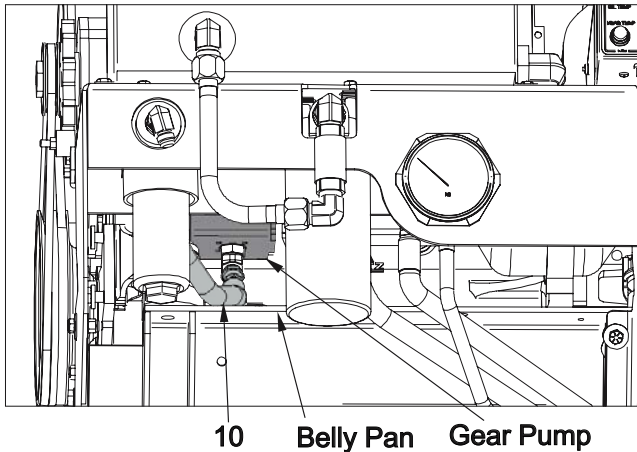


Figure 9 - Install High Pressure Hose

Step 8.

A. Place tank on tank mount (see Figure 10) and tighten bolts.

B. Place fittings in high pressure filter and oil filter (see Figure 10).

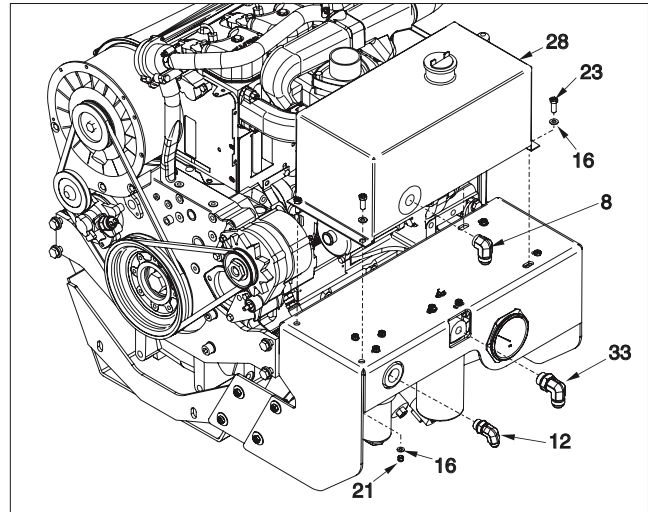


Figure 10 - Install Tank and Fittings

Step 9.

A. Connect check valve, tubing and fittings (see Figure 11). Insure arrow on check valve is pointing towards the ground.

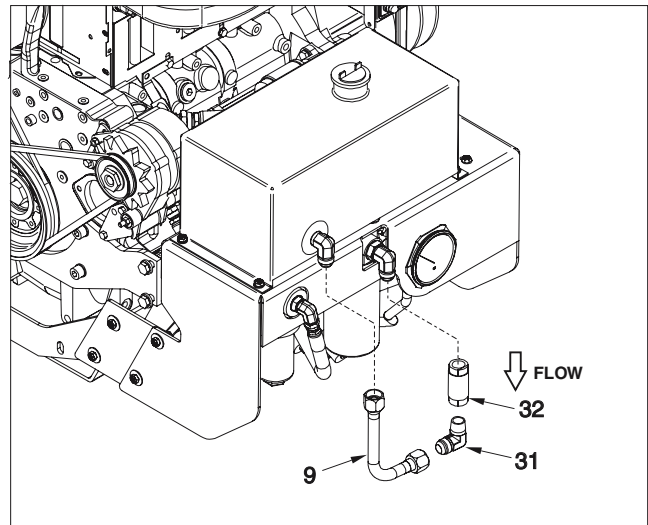


Figure 11 - Install Check Valve and fittings

Step 10.

Connect hose (12) 254734 (see Figure 1 page 1).

Step 11.

- A. Connect hose (13) 237921 to port “H” on hydraulic manifold (see Figure 12). Connect other end to oil filter (see Figure 12).
- B. Connect hose (11) 234149 to port “F” on manifold. Connect other end to hydraulic Accumulator (see Figure 13).

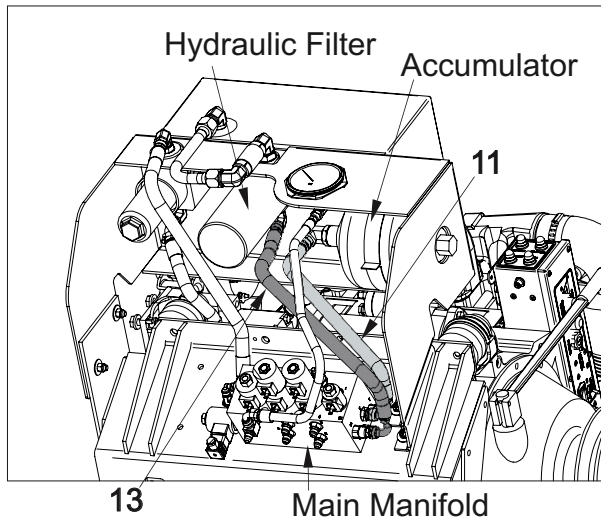


Figure 12 - Install Accumulator and Hydraulic Filter Hose

Step 12.

Connect hose (14) 254198 to port “G” on hydraulic. Connect other end to pressure gauge (see Figure 13).

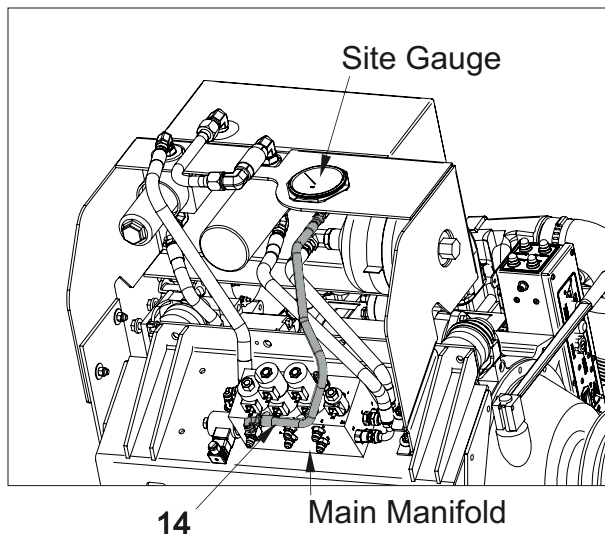


Figure 13 - Instal Site Gauge Hose

Step 13.

Connect hose 232209 to front of high pressure filter (see Figure 14). Connect other end to port “I” on hydraulic manifold.

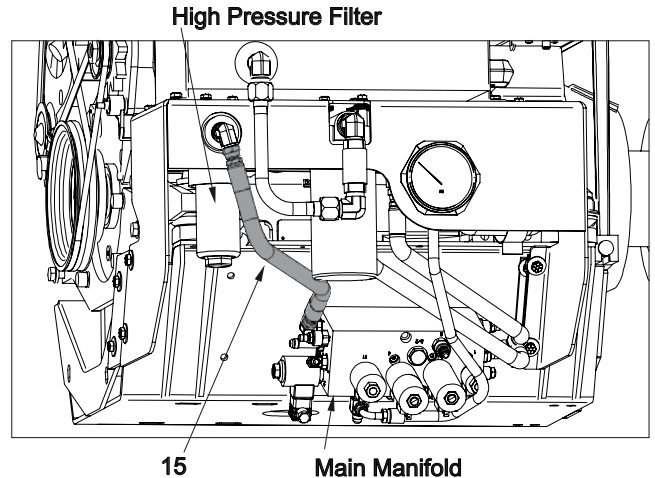


Figure 14 - Instal High Pressure Hose

Step 14. Fill hydraulic reservoir.

- A. Fill 5 gallon hydraulic tank until the oil level is 1” from the top of the container (not the top of the lid).
- B. Run the system by cycling the feeder house cylinders and the tension rail cylinders.
- C. After cycling the system engage the tension rails so that they are completely pulled in, lower the pick-up. This will ensure that all cylinder stem sides are filled with oil.
- D. Shut down the machine.
- E. When machine is completely stopped and hydraulic oil has cooled, remove the cap and make sure the oil is within 1” of the top of the hydraulic tank (not the top of the lid). Fill with additional fluid if necessary. Tightly cap hydraulic tank.

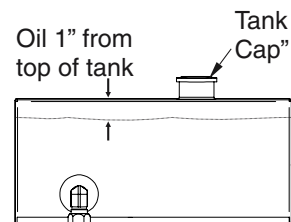
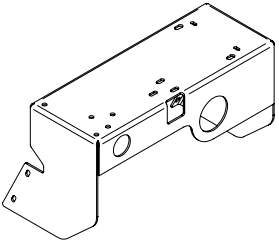
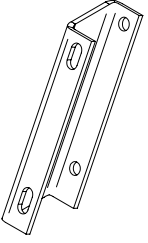
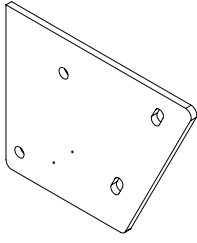
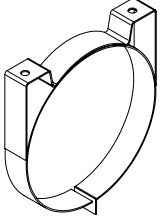
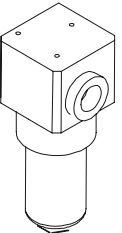
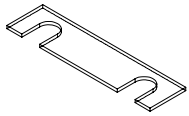
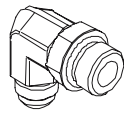
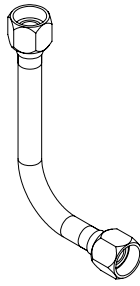



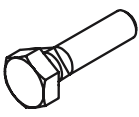



Figure 15 - Oil Level

 <p>1</p>	 <p>2</p>	 <p>3</p>	 <p>4</p>																																																																																								
 <p>5</p>	 <p>6</p>	 <p>7 8</p>	 <p>9</p>																																																																																								
 <p>10 11 12 13 14 15</p>	 <p>16 17 18 19</p>	 <p>20 21</p>	 <p>22 23 24 25 26 27</p>																																																																																								
 <p>28</p>	<p>KIT- 902574</p> <table border="0"> <tr> <td>1. 902265 HYDRAULIC TANK MOUNT</td> <td>1</td> <td>20. R13811191 LOCK-NUT; 3/8~16</td> <td>12</td> </tr> <tr> <td>2. 902253 L-SIDE EXTENSION</td> <td>1</td> <td>21. R13811190 LOCK-NUT; 5/16~18</td> <td>10</td> </tr> <tr> <td>3. 902254 R-SIDE EXTENSION</td> <td>1</td> <td>22. 221499W CAPSCREW; 3/8 NC x 1.25</td> <td>8</td> </tr> <tr> <td>For ASC-280-001 and below</td> <td></td> <td>23. Y17C-0616 CAPSCREW; 3/8-16 UNC x 1</td> <td>4</td> </tr> <tr> <td>3. 902571 R-SIDE EXTENSION</td> <td>1</td> <td>24. R13811014 CAPSCREW; 5/16 UNC X 1</td> <td>7</td> </tr> <tr> <td>For ASC-285-002</td> <td></td> <td>25. R13801791 CAPSCREW; 5/16 NC x 0.75</td> <td>3</td> </tr> <tr> <td>4. 254142 ACCUMULATOR BRACKET</td> <td>1</td> <td colspan="2"><hr/></td> </tr> <tr> <td>5. 252800 HIGH PRESSURE FILTER ASSY</td> <td>1</td> <td colspan="2">Not included in kit :</td> </tr> <tr> <td>6. 902447 PL,SHIM 16GA X .75 X 3</td> <td>8</td> <td colspan="2">These parts are left over from removing the old tank mount and need to be used when installing the new mount.</td> </tr> <tr> <td>7. 208713 FITTING; EL</td> <td>2</td> <td>26. FIL0HH6935 HYDRAULIC FILTER HEAD</td> <td></td> </tr> <tr> <td>8. 209417 FITTING; EL</td> <td>1</td> <td>27. FIL0HF6613 FILTER ELEMENT-SYNTHETIC</td> <td></td> </tr> <tr> <td>9. 902222 RETURN FILTER TUBE</td> <td>1</td> <td>28. TNK004Z980 HYDRAULIC OIL RESERVOIR</td> <td></td> </tr> <tr> <td>10. 253117 HOSE ASSY</td> <td>1</td> <td>29. ACMSBO2102 HYDRAULIC ACCUMULATOR</td> <td></td> </tr> <tr> <td>11. 234149 HOSE ASSY</td> <td>1</td> <td>30. GAG0000001 GAUGE</td> <td></td> </tr> <tr> <td>12. 254734 HOSE ASSY</td> <td>1</td> <td>31. 209417 FITTING EL</td> <td></td> </tr> <tr> <td>13. 237921 HOSE ASSY</td> <td>1</td> <td>32. R11873 CHECK VALVE 3/4</td> <td></td> </tr> <tr> <td>14. 254198 HOSE ASSY</td> <td>1</td> <td>33. 209490 FITTING EL</td> <td></td> </tr> <tr> <td>15. 232209 HOSE ASSY</td> <td>1</td> <td>34. 19920 FITTING; EL</td> <td></td> </tr> <tr> <td>16. 223428 WASHER, FLAT; 5/16 ZC</td> <td>24</td> <td></td> <td></td> </tr> <tr> <td>17. R13802623 WASHER, FLAT; 3/8 PLAIN</td> <td>2</td> <td></td> <td></td> </tr> <tr> <td>18. R13811458 WASHER, HARD; M10</td> <td>14</td> <td></td> <td></td> </tr> <tr> <td>19. R13812513 WASHER, LOCK; 5/16</td> <td>6</td> <td></td> <td></td> </tr> </table>			1. 902265 HYDRAULIC TANK MOUNT	1	20. R13811191 LOCK-NUT; 3/8~16	12	2. 902253 L-SIDE EXTENSION	1	21. R13811190 LOCK-NUT; 5/16~18	10	3. 902254 R-SIDE EXTENSION	1	22. 221499W CAPSCREW; 3/8 NC x 1.25	8	For ASC-280-001 and below		23. Y17C-0616 CAPSCREW; 3/8-16 UNC x 1	4	3. 902571 R-SIDE EXTENSION	1	24. R13811014 CAPSCREW; 5/16 UNC X 1	7	For ASC-285-002		25. R13801791 CAPSCREW; 5/16 NC x 0.75	3	4. 254142 ACCUMULATOR BRACKET	1	<hr/>		5. 252800 HIGH PRESSURE FILTER ASSY	1	Not included in kit :		6. 902447 PL,SHIM 16GA X .75 X 3	8	These parts are left over from removing the old tank mount and need to be used when installing the new mount.		7. 208713 FITTING; EL	2	26. FIL0HH6935 HYDRAULIC FILTER HEAD		8. 209417 FITTING; EL	1	27. FIL0HF6613 FILTER ELEMENT-SYNTHETIC		9. 902222 RETURN FILTER TUBE	1	28. TNK004Z980 HYDRAULIC OIL RESERVOIR		10. 253117 HOSE ASSY	1	29. ACMSBO2102 HYDRAULIC ACCUMULATOR		11. 234149 HOSE ASSY	1	30. GAG0000001 GAUGE		12. 254734 HOSE ASSY	1	31. 209417 FITTING EL		13. 237921 HOSE ASSY	1	32. R11873 CHECK VALVE 3/4		14. 254198 HOSE ASSY	1	33. 209490 FITTING EL		15. 232209 HOSE ASSY	1	34. 19920 FITTING; EL		16. 223428 WASHER, FLAT; 5/16 ZC	24			17. R13802623 WASHER, FLAT; 3/8 PLAIN	2			18. R13811458 WASHER, HARD; M10	14			19. R13812513 WASHER, LOCK; 5/16	6		
1. 902265 HYDRAULIC TANK MOUNT	1	20. R13811191 LOCK-NUT; 3/8~16	12																																																																																								
2. 902253 L-SIDE EXTENSION	1	21. R13811190 LOCK-NUT; 5/16~18	10																																																																																								
3. 902254 R-SIDE EXTENSION	1	22. 221499W CAPSCREW; 3/8 NC x 1.25	8																																																																																								
For ASC-280-001 and below		23. Y17C-0616 CAPSCREW; 3/8-16 UNC x 1	4																																																																																								
3. 902571 R-SIDE EXTENSION	1	24. R13811014 CAPSCREW; 5/16 UNC X 1	7																																																																																								
For ASC-285-002		25. R13801791 CAPSCREW; 5/16 NC x 0.75	3																																																																																								
4. 254142 ACCUMULATOR BRACKET	1	<hr/>																																																																																									
5. 252800 HIGH PRESSURE FILTER ASSY	1	Not included in kit :																																																																																									
6. 902447 PL,SHIM 16GA X .75 X 3	8	These parts are left over from removing the old tank mount and need to be used when installing the new mount.																																																																																									
7. 208713 FITTING; EL	2	26. FIL0HH6935 HYDRAULIC FILTER HEAD																																																																																									
8. 209417 FITTING; EL	1	27. FIL0HF6613 FILTER ELEMENT-SYNTHETIC																																																																																									
9. 902222 RETURN FILTER TUBE	1	28. TNK004Z980 HYDRAULIC OIL RESERVOIR																																																																																									
10. 253117 HOSE ASSY	1	29. ACMSBO2102 HYDRAULIC ACCUMULATOR																																																																																									
11. 234149 HOSE ASSY	1	30. GAG0000001 GAUGE																																																																																									
12. 254734 HOSE ASSY	1	31. 209417 FITTING EL																																																																																									
13. 237921 HOSE ASSY	1	32. R11873 CHECK VALVE 3/4																																																																																									
14. 254198 HOSE ASSY	1	33. 209490 FITTING EL																																																																																									
15. 232209 HOSE ASSY	1	34. 19920 FITTING; EL																																																																																									
16. 223428 WASHER, FLAT; 5/16 ZC	24																																																																																										
17. R13802623 WASHER, FLAT; 3/8 PLAIN	2																																																																																										
18. R13811458 WASHER, HARD; M10	14																																																																																										
19. R13812513 WASHER, LOCK; 5/16	6																																																																																										