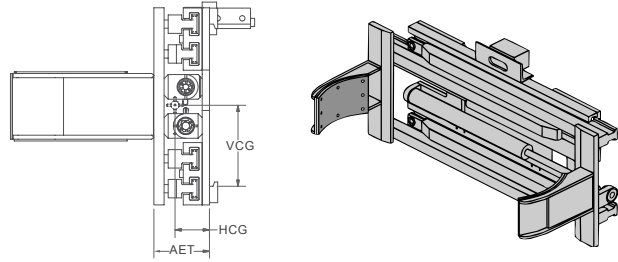


# LCS Drum Clamps

- ▶ Designed to handle 55-gallon steel drums
- ▶ Rubber covered non-slip pads
- ▶ Other pad/drum styles and higher capacities available
- ▶ 2-drum model handles 1 or 2 drums
- ▶ 4-drum model handles 2 or 4 drums
- ▶ Available in 2-drum (side-by-side) and 4-drum (side-by-side, two deep) models



## Non-Sideshifting, 2-Drum Clamps, 1 Function

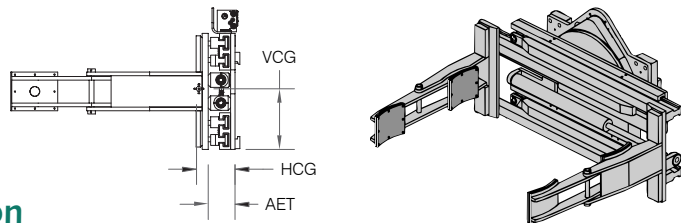
Model Number	Capacity lb @ 24"	Opening Range (in)	Arm Size H x L (in)	Mounting Class	Angle (°)	Lost Load AET (in)	HCG (in)	VCG (in)	Weight (lb)
LCS-25NN-D2A18	2,500	18.3–65.0	8 x 18	II	0	5.0	7.8	8.7	640
LCS-35NN-D2A18	3,500	18.3–70.0							655

## Sideshifting, 2-Drum Clamps, 2 Functions

LCS-25NS-D2A18	2,500	18.3–65.0	8 x 18	II	0	5.0	7.8	8.7	640
LCS-35NS-D2A18	3,500	18.3–70.0							655

## 360° Rotating, 2-Drum Clamps, 2 Functions

LCS-25RN-D2A18	2,500	18.3–65.0	8 x 18	II	0	10.4	10.5	13.0	900
LCS-35RN-D2A18	3,500	18.3–70.0							920



## Non-Sideshifting, 4-Drum Clamps, 1 Function

LCS-25NN-D4D42	2,500	15.0–61.5	8 x 42	II	0	5.0	8.7	6.7	775
LCS-35NN-D4D42	3,500	15.0–66.5							790
LCS-50NN-D4D42	5,000	18.0–72.0	8 x 42	II or III	0	5.0/6.0	8.9 / 9.9	6.9	875

## Sideshifting, 4-Drum Clamps, 2 Functions

LCS-25NS-D4D42	2,500	15.0–61.5	8 x 42	II	0	5.0	8.7	6.7	775
LCS-35NS-D4D42	3,500	15.0–66.5							790
LCS-50NS-D4D42	5,000	18.0–72.0	8 x 42	II or III	0	5.0	8.9	6.9	875

## 360° Rotating, 4-Drum Clamps, 2 Functions

LCS-25RN-D4D42	2,500	15.0–61.5	8 x 42	II	0	10.4	12.4	12.7	1,035
LCS-35RN-D4D42	3,500	15.0–66.5							1,050
LCS-50RN-D4D42	5,000	18.0–72.0	8 x 42	II or III	0	10.4/10.1	12.9/12.6	12.8	1,485

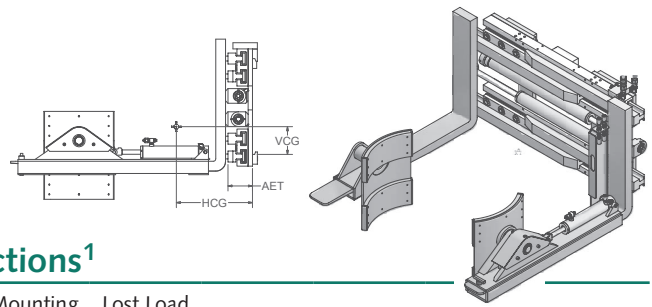
NOTE: 2-drum handles 1 or 2 drums  
4-drum handles 2 or 4 drums

## ! Minimum Truck Carriage Width

Model Number	Body Width (in)	Minimum Truck Carriage Width (in)
LCS-25	36	30
LCS-25RN	36	29
LCS-35	41	35
LCS-35RN	41	29
LCS-50	41	35
LCS-50RN	41	33

# LCS Forward Drum Dumper

- ▶ Handles a variety of drum sizes and types
- ▶ Rubber covered non-slip pads
- ▶ Visibility that puts the driver in control
- ▶ Dumper arms can be removed to use as a pallet fork clamp



## Forward Drum Dumper: 1 Powered Arm, 2 Functions<sup>1</sup>

Model Number	Capacity with Forks (lb)	Capacity with Dumper (lb)	Opening Range (in)	Mounting Class	Lost Load AET (in)	HCG (in)	VCG (in)	Weight (lb)
LCS-25NN-DD1B8	2,500		9-55.5					880
LCS-35NN-DD1B8	3,500	2,000	9-60.5	II	5.0	13.6	5.6	920
LCS-50NN-DD1B8	5,000		12-66.1	II or III	5.0 / 6.0	13.4 / 14.4	6.1	1,045

## Forward Drum Dumper: 2 Powered Arms, 2 Functions<sup>1</sup>

LCS-25NN-DD2B8	2,500		9-55.5	II	5.0	14.0	5.3	920
LCS-35NN-DD2B8	3,500	2,000	9-60.5					960
LCS-50NN-DD2B8	5,000		12-66.1	II or III	5.0 / 6.0	13.8 / 14.8	6.1	1,085

<sup>1</sup> Side shift available. Sideshift adds a third function. A solenoid installation will be required.

NOTES: Includes quick disconnect hydraulic couplings to convert drum dumper to a pallet fork clamp. Standard fork length is 48".



## Recommended Hydraulic Supply

Model Number	Flow (gpm)	Max psi
All Non-Rotating Models	7-10	2,500
All Rotating Models	12	2,500

Hydraulic flow less than minimum may reduce operating speed and/or cause irregular arm movement. Higher flow may result in heat build-up, erratic operation and shortened hydraulic system life.



## Capacity

Mounting Class	Truck Rating
II	2,000-5,500
III	6,000-10,000



## Minimum Truck Carriage Width

Model Number	Body Width (in)	Minimum Truck Carriage Width (in)
LCS-25	36	30
LCS-35	41	35
LCS-50	41	35



## Installation Kits

Model Number	Number of Functions
YHJL-6-D-30	
YHJL-8-D-30	2

YOB-26 Set of two #6 Quick Disc. Hydraulic Couplings

YOB-16 Set of two #8 Quick Disc. Hydraulic Couplings

Includes the hoses and fittings to connect a standard attachment to the hose terminal on the lift truck carriage.



## Optional Mounting Hooks

	Description
Class II	Quick Change Hooks
Class III	Quick Change Hooks

Mounting other than shown, consult factory.