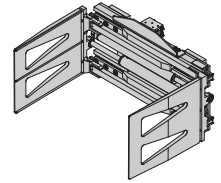
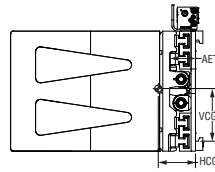


LCP/NSQ Pulp Bale Clamps

- Clean, grease-free handling – no lubrication required
- Internal sideshift for maneuverability
- Thin arm design for easier entry between stacks
- For All-in-One pulp/paper clamp, see Page D-15



Sideshifting Pulp Bale Clamps, 2 Functions

Model Number	Capacity lb @ L.C.	Opening Range (in)	Body Width (in)	Arm Size H x L (in)	Lost Load AET (in)	HCG (in)	VCG (in)	Mounting Class	Weight (lb)
LCP-44NS-P1827		22.8–77.1		18 x 27	5.0	7.0	9.8		851
LCP-44NS-P1848		22.3–76.6	41	18 x 48	5.0	13.8	9.5	II or III	1,150
LCP-44NS-P4824	4,400	22.8–77.1		48 x 24	5.0	9.8	17.0		997
LCP-4CNS-P1827	lb @ 24"	22.8–84.1		18 x 27	5.0	6.5	9.7		939
LCP-4CNS-P1848		22.3–83.6	48	18 x 48	5.0	13.0	9.6	II or III	1,237
LCP-4CNS-P4824		22.8–84.1		48 x 24	5.0	9.3	16.5		1,085
LCP-55NS-P1827		22.8–76.5		18 x 27	5.5	6.4	9.8		985
LCP-55NS-P1848		22.3–76.0	41	18 x 48	5.5	12.6	9.6	III	1,282
LCP-55NS-P4824	5,500	22.8–76.5		48 x 24	5.5	9.0	16.2		1,130
LCP-5CNS-P1827	lb @ 24"	22.8–83.5		18 x 27	5.5	6.0	9.8		1,095
LCP-5CNS-P1848		22.3–83.0	48	18 x 48	5.5	11.8	9.6	III	1,393
LCP-5CNS-P4824		22.8–83.5		48 x 24	5.5	8.4	15.6		1,241
NSQ-75NS-P1540		22–74	50	15 x 40	9.6 ¹	8.8	11.6	III	1,875
NSQ-75NS-P1548	7,500			15 x 48	9.6 ¹	12.3	10.8		2,095
NSQ-7ANS-P1540	lb @ 35"	22–90	62	15 x 40	9.6 ¹	9.6	11.3	III	2,175
NSQ-7ANS-P1548				15 x 48	9.6 ¹	11.4	11.3		2,395
NSQ-88NS-P2048		22–76	50	20 x 48	9.6 ¹	14.2	12.5	IV	2,685
NSQ-88NS-P2055	8,800			20 x 55	9.6 ¹	16.6	11.9		2,850
NSQ-8ANS-P2048	lb @ 35"	22–90	62	20 x 48	9.6 ¹	12.8	12.6	IV	3,050
NSQ-8ANS-P2055				20 x 55	9.6 ¹	14.0	11.8		3,230
NSQ-11NS-P2048				20 x 48	10.3 ¹	11.3	13.6		3,060
NSQ-11NS-P2055		25–84	52	20 x 55	10.3 ¹	13.1	12.9	IV	3,125
NSQ-11NS-P4848	11,000			48 x 48	10.3 ¹	15.0	15.8		3,678
NSQ-11NS-P4856	lb @ 35"	25–91	58	48 x 56	10.3 ¹	19.4	17.4		4,875
NSQ-1ANS-P2048		34–110	64	20 x 48	10.3 ¹	10.5	13.6	IV	3,425
NSQ-1ANS-P2055				20 x 55	10.3 ¹	11.7	13.0		3,505
NSQ-17NS-P2055	17,000	24–120	96	20 x 55	Consult	Consult	Consult	Pin	4,895
NSQ-17NS-P2063	lb @ 35"			20 x 63	Factory	Factory	Factory		5,050
NSQ-20NS-P3055	20,000	28–158	125	30 x 55	Consult	Consult	Consult	Pin	6,850
NSQ-20NS-P3063	lb @ 35"			30 x 63	Factory	Factory	Factory		7,080

¹ NSQ AET measured to heel.

Recommended Hydraulic Supply

Model Number	Flow (gpm)	Max psi
LCP-44NS/5CNS	7–10	2,500
NSQ-75NS/1ANS	9–15	2,250
NSQ-17NS/20NS	15–18	2,250

Hydraulic flow less than minimum may reduce operating speed and/or cause irregular arm movement. Higher flow may result in heat build-up, erratic operation and shortened hydraulic system life.