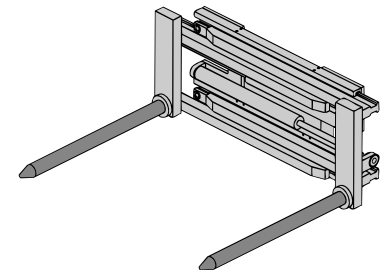
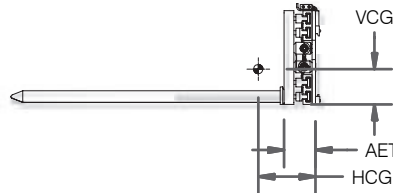


LCS Bar Arm Clamps

- ▶ Clean, grease-free handling of textile rolls
- ▶ Visibility that puts the driver in control
- ▶ Application engineered for the textile industry
- ▶ Hardened tips available for extended life



Non-Sideshifting Bar Arm Clamps, 1 Function

Model Number	Capacity (lb) @ 24"	Opening Range (in)	Arm Size D x L (in)	Mounting Class	Lost Load AET (in)	HCG (in)	VCG (in)	Weight (lb)
LCS-45NN-R2542	4,500	10.0-56.8	2.5 x 42	II	9.0	7.2	8.2	764
LCS-45NN-R2548	4,500		2.5 x 48			8.1	8.0	780
LCS-45NN-R3042	4,500	10.0-56.8	3 x 42	II or III	9.0 / 10.0	8.6 / 9.6	7.5	821
LCS-45NN-R3048	4,500		3 x 48			9.8 / 10.8	7.2	845
LCS-45NN-R3060	4,500		3 x 60			12.6 / 13.6	6.7	893
LCS-45NN-R3072	4,500		3 x 72			15.6 / 16.6	6.3	941
LCS-4RNN-R3042	4,500	6.0-48.8	3 x 42	II or III	9.0 / 10.0	8.6 / 9.6	7.5	821
LCS-4RNN-R3048	4,500		3 x 48			9.8 / 10.8	7.2	845
LCS-4RNN-R3060	4,500		3 x 60			12.6 / 13.6	6.7	893
LCS-4RNN-R3072	4,500		3 x 72			15.6 / 16.6	6.3	941

Sideshifting Bar Arm Clamps, 2 Functions

LCS-45NS-R2542	4,500	10.0-56.8	2.5 x 42	II	9.0	7.2	8.2	764
LCS-45NS-R2548	4,500		2.5 x 48			8.1	8.0	780
LCS-45NS-R3042	4,500	10.0-56.8	3 x 42	II or III	9.0	8.6	7.5	821
LCS-45NS-R3048	4,500		3 x 48			9.8	7.2	845
LCS-45NS-R3060	4,500		3 x 60			12.6	6.7	893
LCS-45NS-R3072	4,500		3 x 72			15.6	6.3	941
LCS-4RNS-R3042	4,500	6.0-48.8	3 x 42	II or III	9.0	8.6	7.5	821
LCS-4RNS-R3048	4,500		3 x 48			9.8	7.2	845
LCS-4RNS-R3060	4,500		3 x 60			12.6	6.7	893
LCS-4RNS-R3072	4,500		3 x 72			15.6	6.3	941



Recommended Hydraulic Supply

Model Number	Flow (gpm)	Max psi
LCS Models	7-10	2,500

Hydraulic flow less than minimum may reduce operating speed and/or cause irregular arm movement. Higher flow may result in heat build-up, erratic operation and shortened hydraulic system life.



Installation Kits

Model Number	Number of Functions
YHJL-6-S-30	1
YHJL-8-S-30	1
YHJL-6-D-30	2
YHJL-8-D-30	2

Includes the hoses and fittings to connect a standard attachment to the hose terminal on the lift truck carriage.



Optional Mounting Hooks

	Description
Class II	Quick Change Hooks
Class III	Quick Change Hooks

Mounting other than shown, consult factory.



Minimum Truck Carriage Width

Model Number	Body Width (in)	Minimum Truck Carriage Width (in)
All Models	41	35